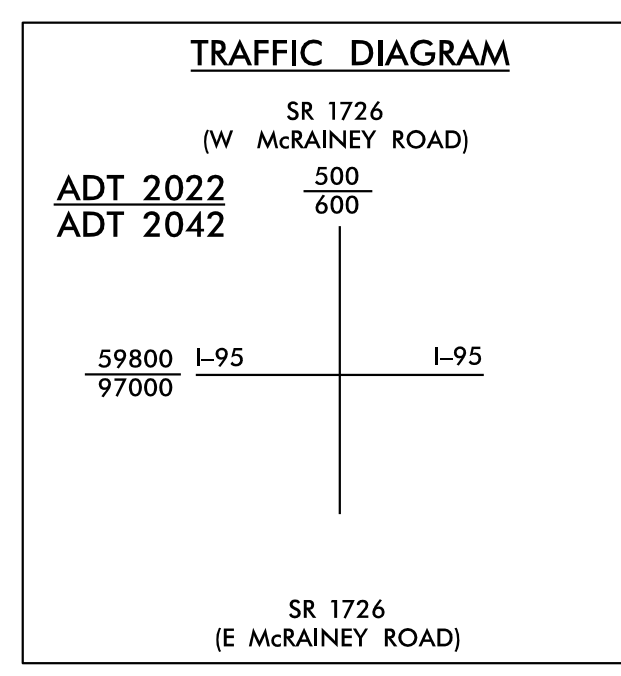
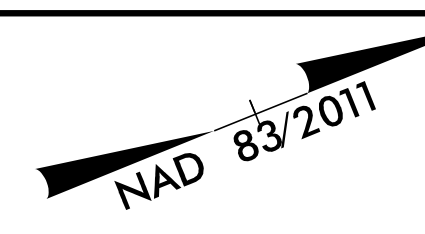


5/14/2022
R:\Projects\15987b_rdy_psh_25.dgn
4/21/2022
W:\Projects\15987b_rdy_psh_25.dgn



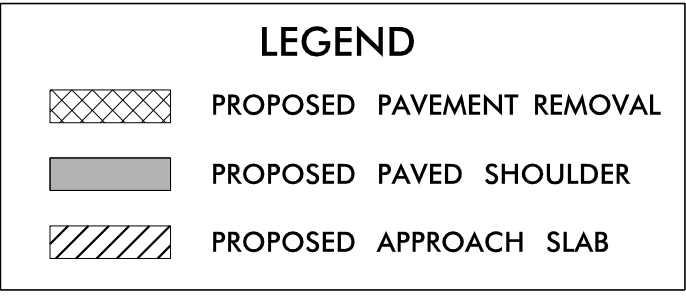
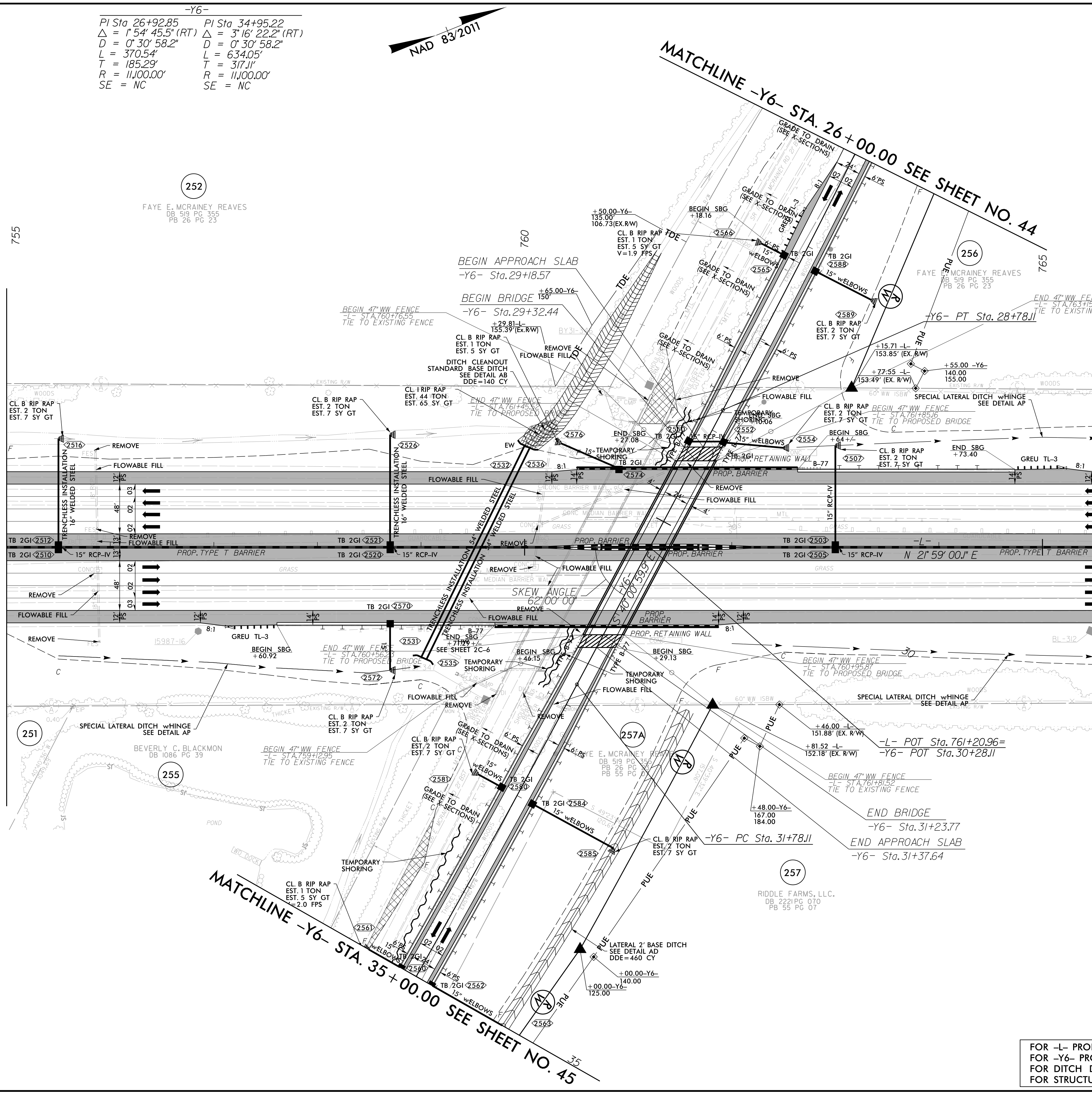
-Y6-
PI Sta. 26+92.85 PI Sta. 34+95.22
 $\Delta = 1^{\circ}54'45.5''$ (RT) $\Delta = 3^{\circ}16'22.2''$ (RT)
 $D = 0^{\circ}30'58.2''$ $D = 0^{\circ}30'58.2''$
 $L = 370.54'$ $L = 634.05'$
 $T = 185.29'$ $T = 317.11'$
 $R = 11,000.00'$ $R = 11,000.00'$
 $SE = NC$ $SE = NC$



PROJECT REFERENCE NO. 1-5987B	SHEET NO. 25
RW SHEET NO.	HYDRAULICS ENGINEER
ROADWAY DESIGN ENGINEER	DAVID C. WETHERILL
DAVID C. WETHERILL NORTH CAROLINA PROFESSIONAL ENGINEER SEAL 22888 LICENSE NO. F-0669	WETHERILL ENGINEERING, LLC LICENSE NO. F-0377
DOCUMENT NOT CONSIDERED FINAL UNLESS ALL SIGNATURES COMPLETED	
Prepared in the Office of: M MOTT MACDONALD & E. LLC FAYE E. MCRRAINEY REAVES DB 519 PG 355 PB 26 PG 23	
1223 Jones Franklin Rd. Raleigh, N.C. 27606 License No. F0377 Bus: 919 851 8077 Fax: 919 851 8107	

MATCHLINE -L- STA. 755 + 00.00 SEE SHEET NO. 24

MATCHLINE -L- STA. 766 + 00.00 SEE SHEET NO. 26



FOR -L- PROFILE, SEE SHEET 70
FOR -Y6- PROFILE, SEE SHEET 95
FOR DITCH DETAILS, SEE SHEETS 2D-1 THRU 2D-3
FOR STRUCTURE PLANS, SEE SHEETS S8-1 THRU S8-28