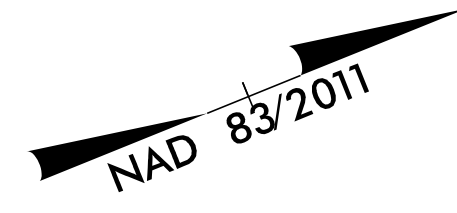
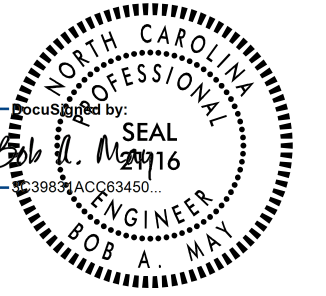
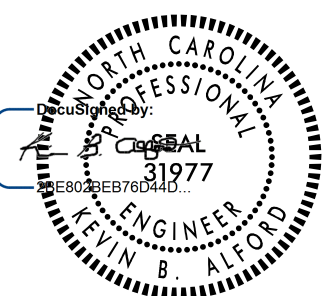



5/14/99
 4/28/2022
 R:\P\15987b\15987b_rdy_psh_24.dgn
 W:\15987b\15987b.dgn

FAYE E. MCRAINEY REAVES
 DB 519 PG 355
 PB 26 PG 23

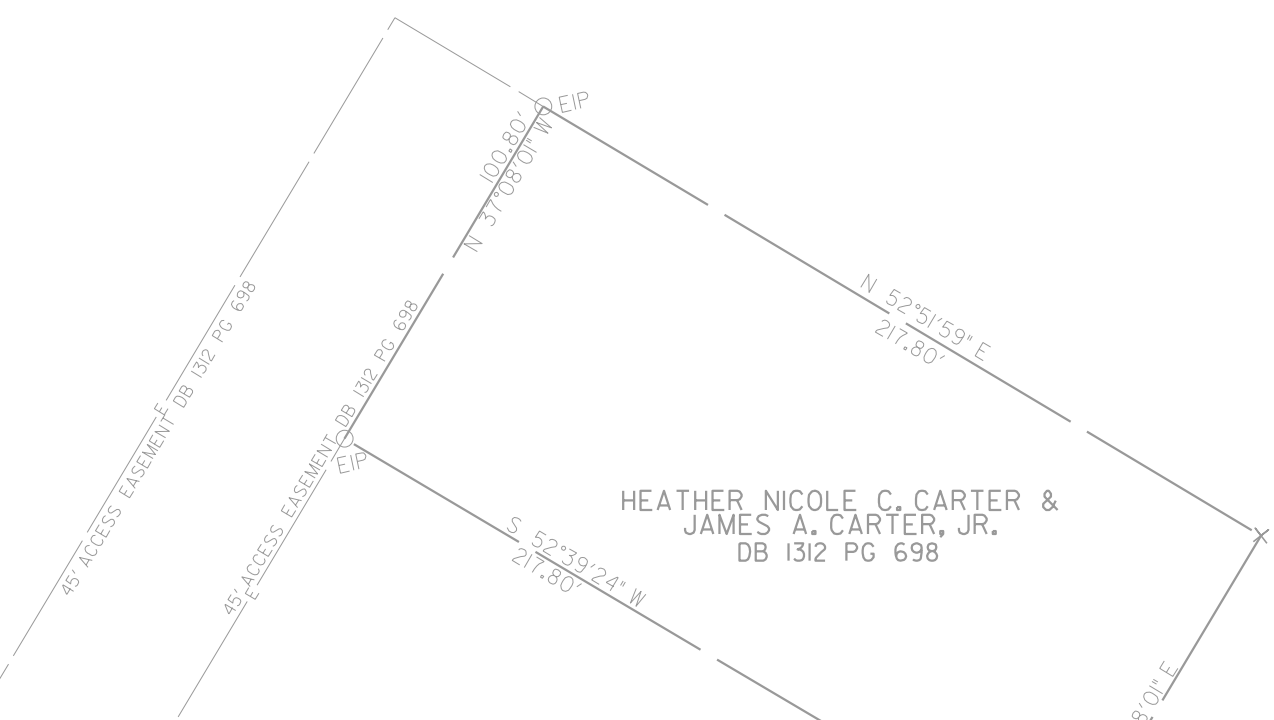
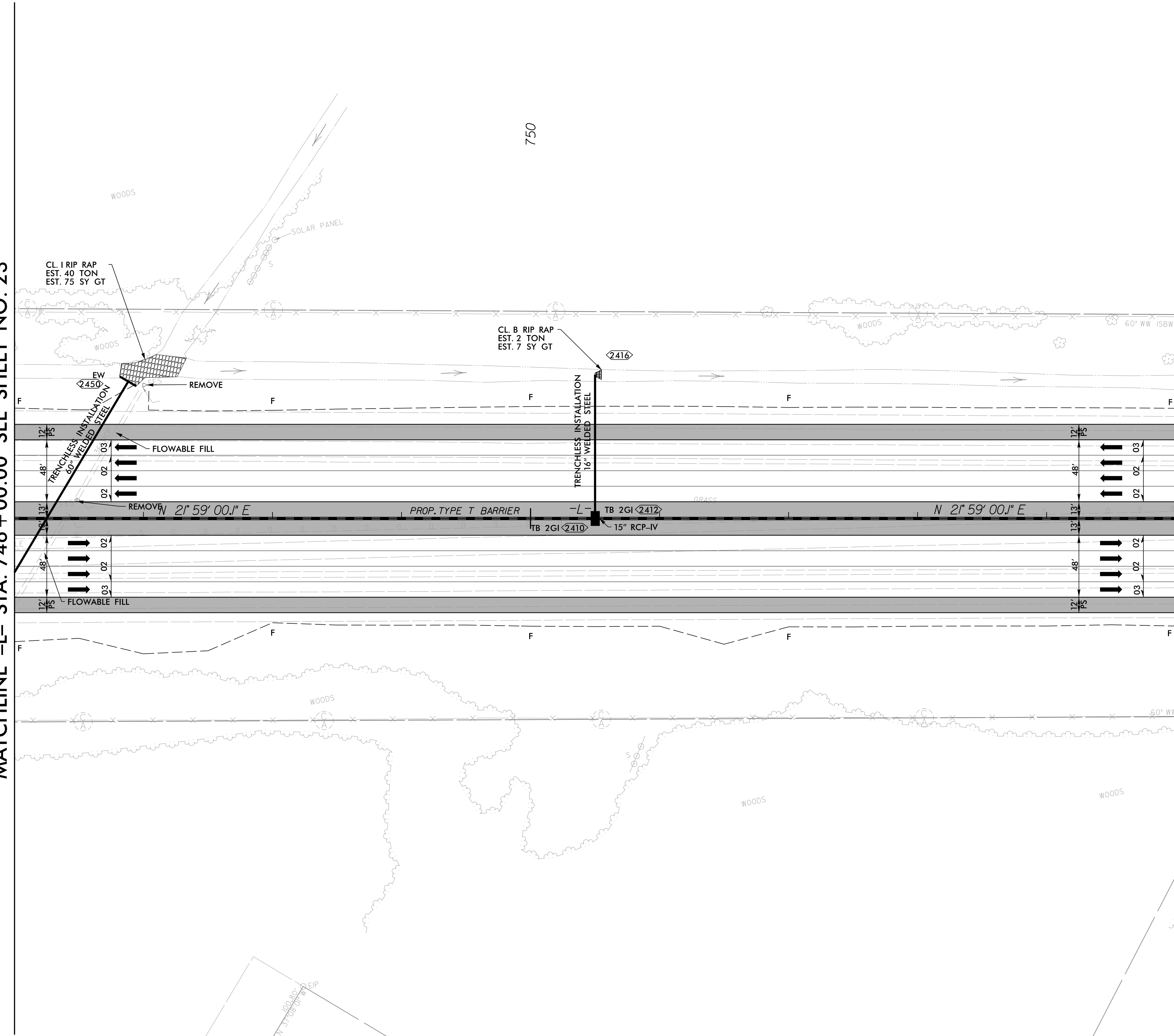
252



PROJECT REFERENCE NO. 1-5987B	SHEET NO. 24
RW SHEET NO.	
ROADWAY DESIGN ENGINEER 	HYDRAULICS ENGINEER 
DOCUMENT NOT CONSIDERED FINAL UNLESS ALL SIGNATURES COMPLETED	
	
1223 Jones Franklin Rd. Raleigh, N.C. 27606 License No. F-0377 Bus: 919 851 8077 Fax: 919 851 8107	
TRANSPORTATION PLANNING/DESIGN - BRIDGE/STRUCTURE DESIGN CIVIL/SITE DESIGN - GIS/GPS - CONSTRUCTION OBSERVATION	

MATCHLINE -L- STA. 746 + 00.00 SEE SHEET NO. 23

MATCHLINE -L- STA. 755 + 00.00 SEE SHEET NO. 25



HEATHER NICOLE C. CARTER &
 JAMES A. CARTER, JR.
 DB 1312 PG 698

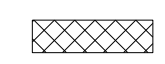
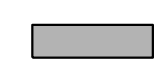
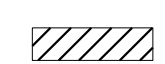
FAYE E. MCRAINEY REAVES
 DB 519 PG 355
 PB 26 PG 23

251

BEVERLY C. BLACKMON
 DB 1086 PG 39

255

LEGEND

-  PROPOSED PAVEMENT REMOVAL
-  PROPOSED PAVED SHOULDER
-  PROPOSED APPROACH SLAB

FOR DITCH DETAILS SEE SHEETS D-1 THRU D-3
 FOR -L- PROFILE SEE SHEET 69