

4/28/2022 R:\P\15987b_rdy_psh_23.dgn

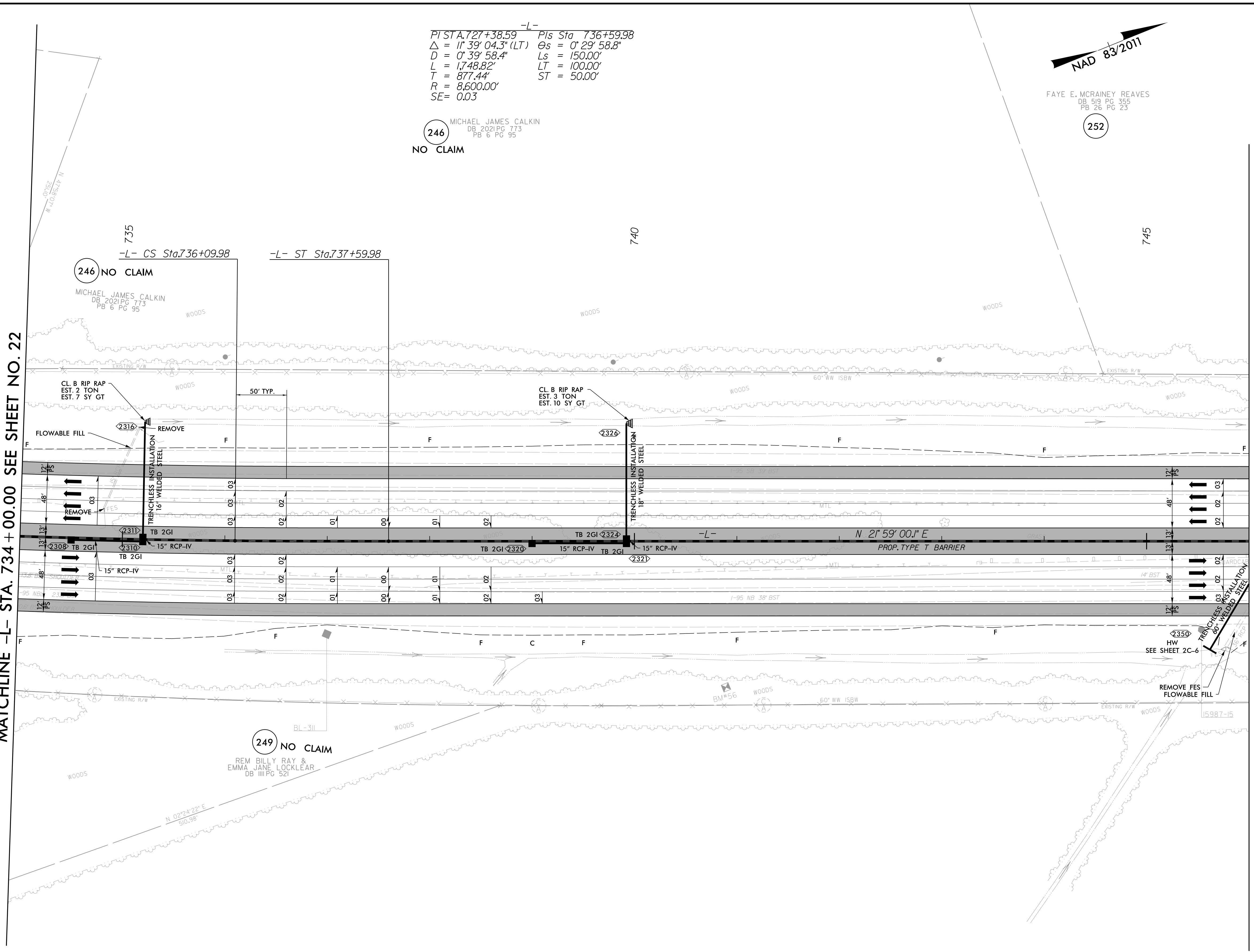
MATCHLINE -L- STA. 734 + 00.00 SEE SHEET NO. 22

MATCHLINE -L- STA. 746 + 00.00 SEE SHEET NO. 24

-L-
 PI STA. 727+38.59 Pls Sta 736+59.98
 $\Delta = 1' 39' 04.3" (LT)$ $\Theta_s = 0' 29' 58.8"$
 $D = 0' 39' 58.4"$ $L_s = 150.00'$
 $L = 1,748.82'$ $LT = 100.00'$
 $T = 877.44'$ $ST = 50.00'$
 $R = 8,600.00'$
 $SE = 0.03$

246 NO CLAIM
 MICHAEL JAMES CALKIN
 DB 2021 PG 773
 PB 6 PG 95

NAD 83/2011
 FAYE E. MCRAINEY REAVES
 DB 519 PG 355
 PB 26 PG 23
 252



249 NO CLAIM
 REM BILLY RAY &
 EMMA JANE LOCKLEAR
 DB III PG 521

251
 FAYE E. MCRAINEY REAVES
 DB 519 PG 355
 PB 26 PG 23

LEGEND

	PROPOSED PAVEMENT REMOVAL
	PROPOSED PAVED SHOULDER
	PROPOSED APPROACH SLAB

FOR DITCH DETAILS SEE SHEETS D-1 THRU D-3
 FOR -L- PROFILE SEE SHEETS 68 & 69

PROJECT REFERENCE NO. 1-5987B	SHEET NO. 23
RW SHEET NO.	
ROADWAY DESIGN ENGINEER 	HYDRAULICS ENGINEER
DOCUMENT NOT CONSIDERED FINAL UNLESS ALL SIGNATURES COMPLETED	
1223 Jones Franklin Rd. Raleigh, N.C. 27606 License No. F-0377 Bus: 919 851 8077 Fax: 919 851 8107	
TRANSPORTATION PLANNING/DESIGN - BRIDGE/STRUCTURE DESIGN CIVIL/SITE DESIGN - GIS/GPS - CONSTRUCTION OBSERVATION	