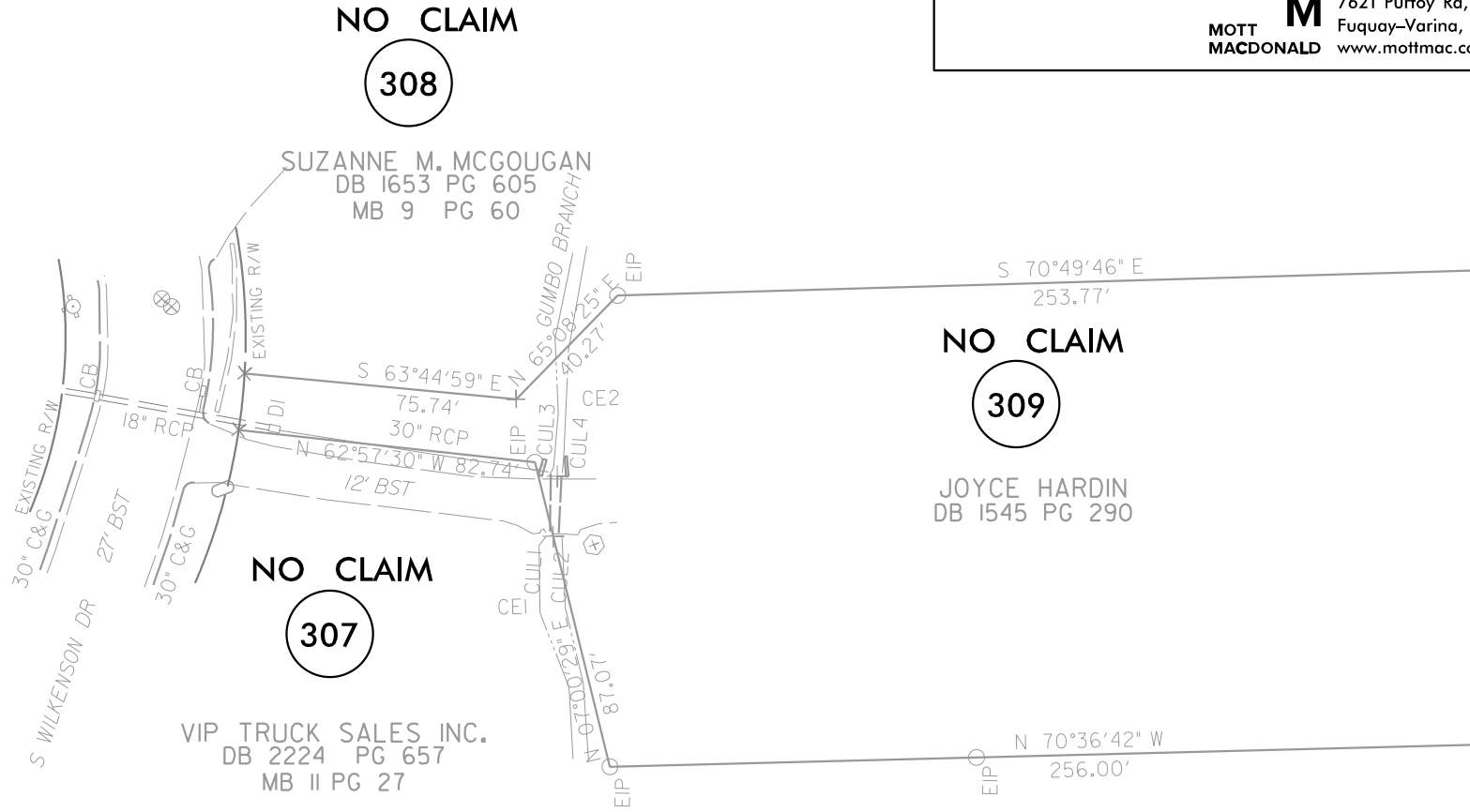
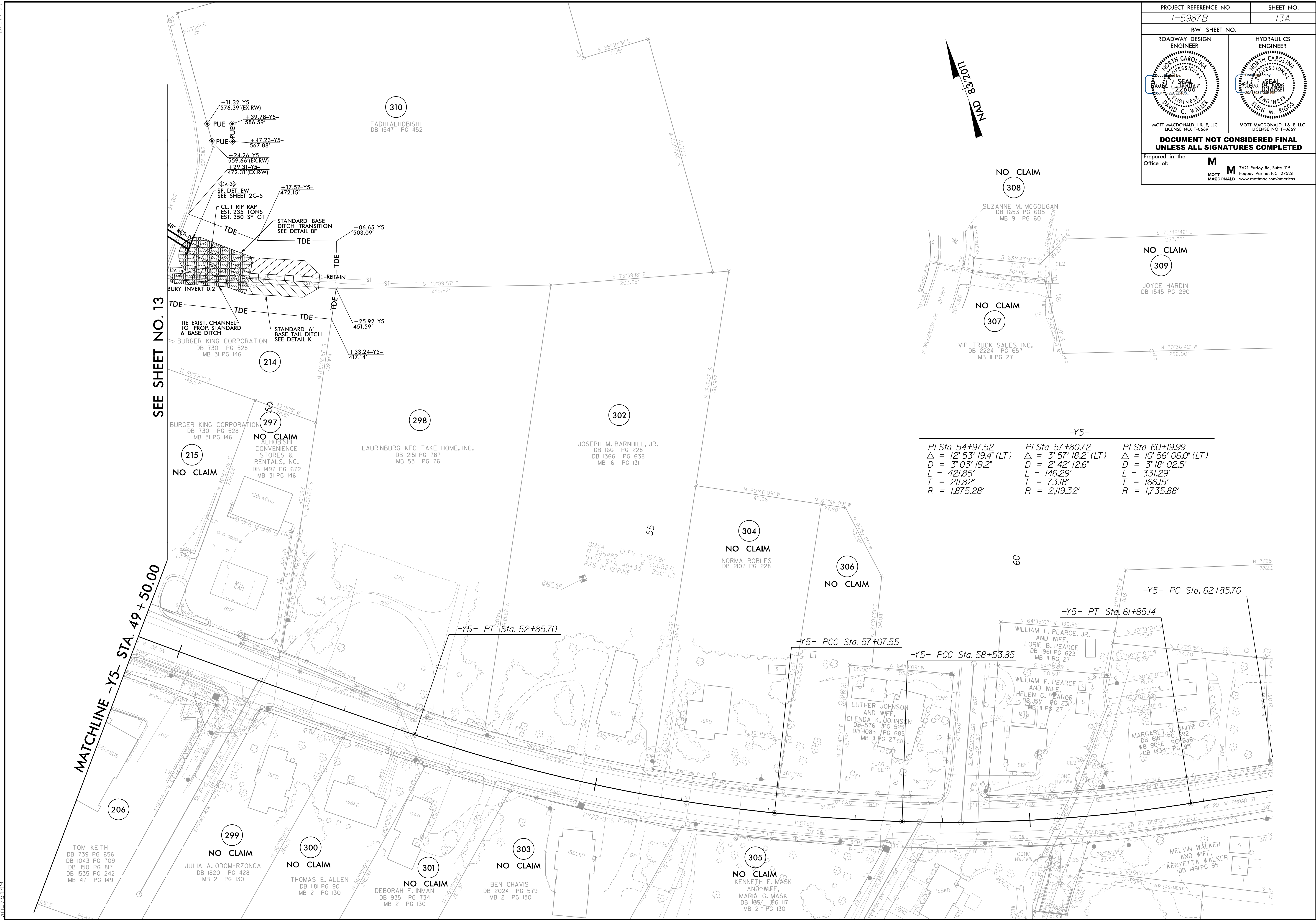


PROJECT REFERENCE NO. 1-5987B	SHEET NO. 13A
RW SHEET NO.	
ROADWAY DESIGN ENGINEER	HYDRAULICS ENGINEER
MOTT MACDONALD I & E LLC LICENSE NO. F-0669	MOTT MACDONALD I & E LLC LICENSE NO. F-0669
DOCUMENT NOT CONSIDERED FINAL UNLESS ALL SIGNATURES COMPLETED	
Prepared in the Office of:	M 7621 Purfoy Rd, Suite 115 Fuquay-Varina, NC 27526 www.mottmac.com/america



-Y5-		
PI Sta 54+97.52	PI Sta 57+80.72	PI Sta 60+99.99
$\Delta = 12' 53'' 19.4''$ (LT)	$\Delta = 3' 57'' 18.2''$ (LT)	$\Delta = 10' 56'' 06.0''$ (LT)
$D = 3' 03'' 19.2''$	$D = 2' 42'' 12.6''$	$D = 3' 18'' 02.5''$
$L = 421.85'$	$L = 146.29'$	$L = 331.29'$
$T = 211.82'$	$T = 73.18'$	$T = 166.15'$
$R = 1,875.28'$	$R = 2,119.32'$	$R = 1,735.88'$

MATCHLINE -Y5- STA. 49+50.00

SEE SHEET NO. 13

8.17.09
4/21/2022
R:\Projects\15987B_rdy.psh_13A.dgn
MOT 7621