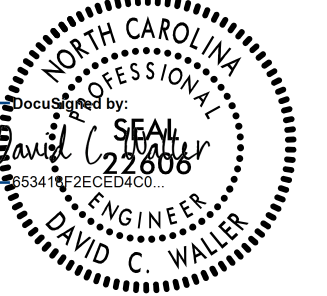
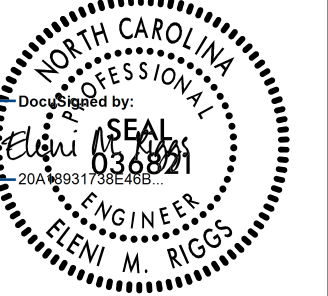
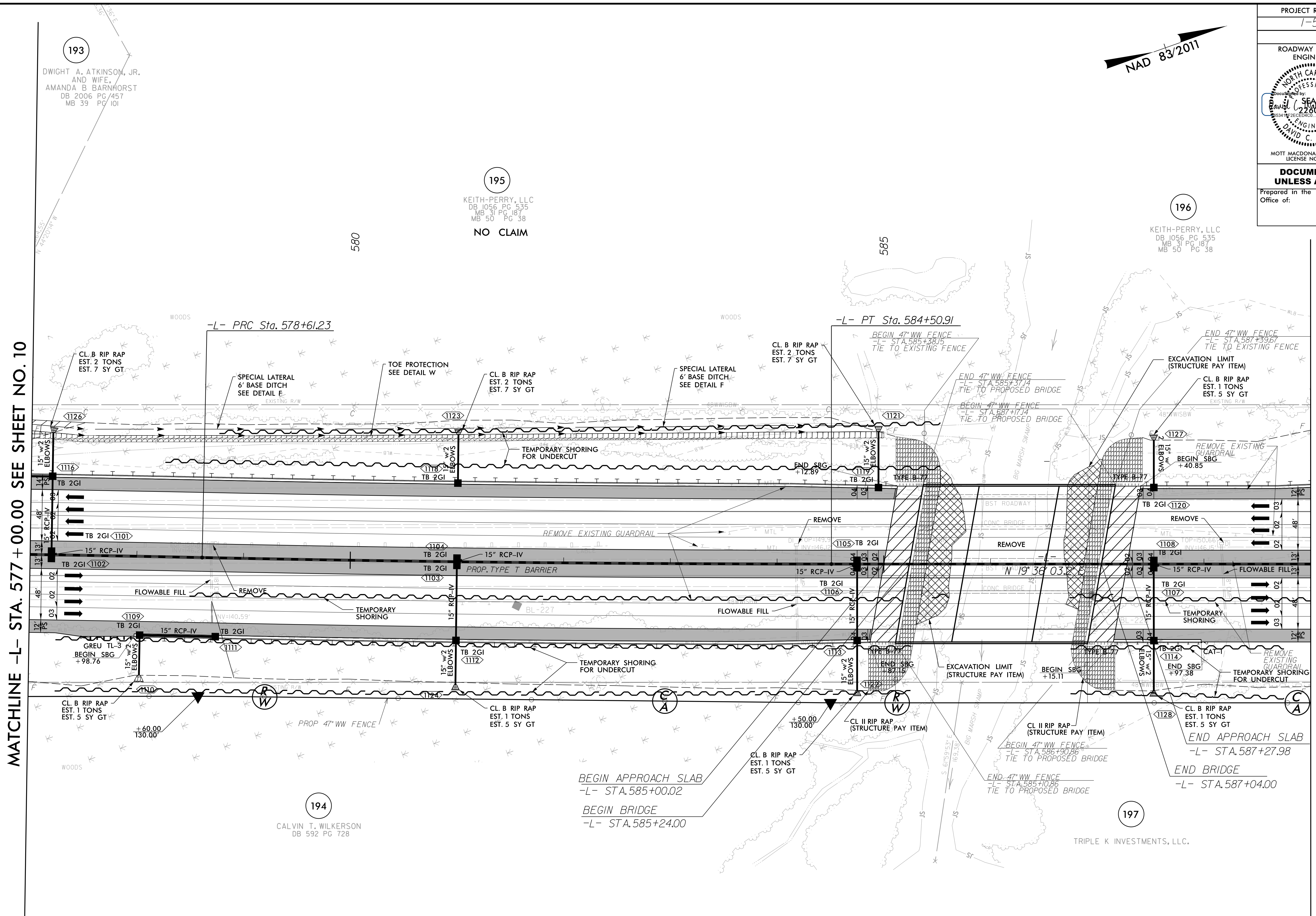
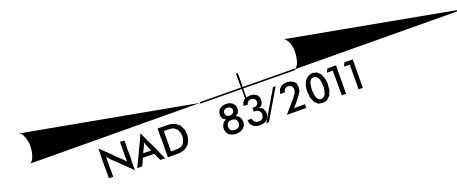


PROJECT REFERENCE NO. 1-5987B		SHEET NO. 11	
RW SHEET NO.		HYDRAULICS ENGINEER	
ROADWAY DESIGN ENGINEER		ENGINEER	
			
MOTT MACDONALD 1 & E, LLC LICENSE NO. F-0669		MOTT MACDONALD 1 & E, LLC LICENSE NO. F-0669	
DOCUMENT NOT CONSIDERED FINAL UNLESS ALL SIGNATURES COMPLETED			
Prepared in the Office of:		M 7621 Purfoy Rd, Suite 115 Fuquay-Varina, NC 27526 MOTT MACDONALD www.mottmac.com/americas	




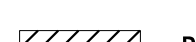
MATCHLINE -L- STA. 577 + 00.00 SEE SHEET NO. 10

MATCHLINE -L- STA. 589 + 00.00 SEE SHEET NO. 12

-L-

PI Sta 576+78.99	PI Sta 581+56.08
$\Delta = 0^{\circ} 43' 57.9''$ (RT)	$\Delta = 1^{\circ} 11' 07.7''$ (LT)
$D = 0^{\circ} 12' 03.7''$	$D = 0^{\circ} 12' 03.7''$
$L = 364.49'$	$L = 589.68'$
$T = 182.25'$	$T = 294.85'$
$R = 28,500.00'$	$R = 28,500.00'$

LEGEND

-  PROPOSED PAVED SHOULDER
-  PROPOSED APPROACH SLAB

FOR -L- PROFILE SEE SHEET 55
 FOR DITCH DETAILS, SEE SHEETS 2D-1 THRU 2D-3
 FOR STRUCTURE PLANS, SEE SHEETS S5-1 THRU S5-64

5/14/99
 4/21/2022
 R:\Projects\15987b_rdy_psh_11.dgn
 11/11/2022

193
 DWIGHT A. ATKINSON, JR.
 AND WIFE,
 AMANDA B. BARNHORST
 DB 2006 PG 457
 MB 39 PG 101

195
 KEITH-PERRY, LLC
 DB 1056 PG 535
 MB 31 PG 187
 MB 50 PG 38
 NO CLAIM

196
 KEITH-PERRY, LLC
 DB 1056 PG 535
 MB 31 PG 187
 MB 50 PG 38

194
 CALVIN T. WILKERSON
 DB 592 PG 728

197
 TRIPLE K INVESTMENTS, LLC.