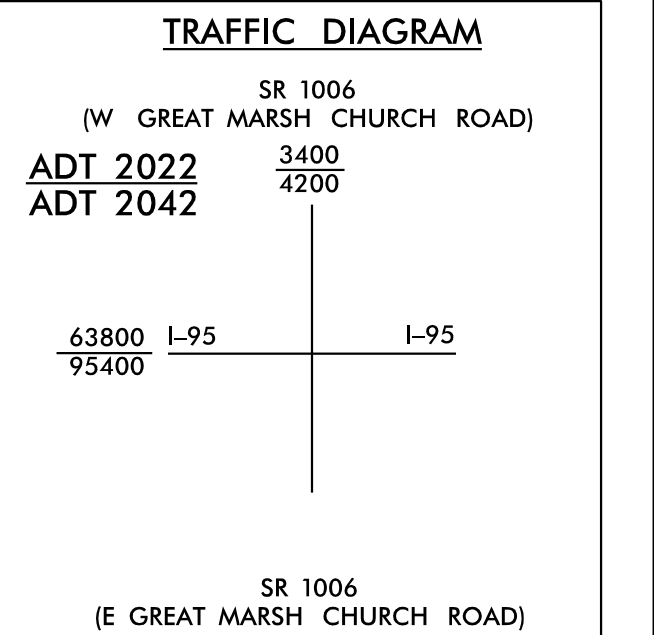
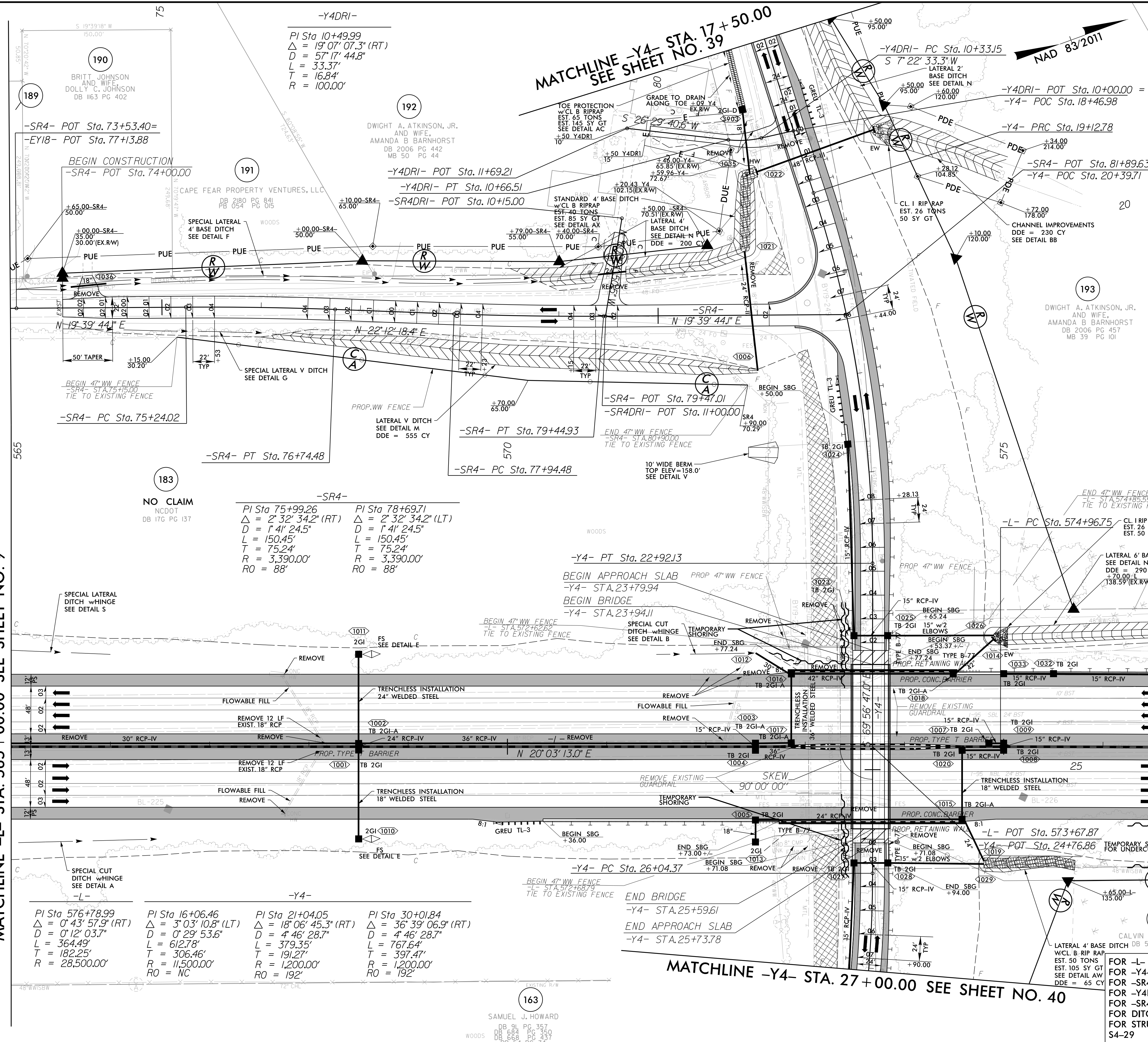


PROJECT REFERENCE NO. I-5987B	SHEET NO. 10
ROADWAY DESIGN ENGINEER	HYDRAULICS ENGINEER
MOTT MACDONALD 1 & E, LLC LICENSE NO. F-0669	MOTT MACDONALD 1 & E, LLC LICENSE NO. F-0669
DOCUMENT NOT CONSIDERED FINAL UNLESS ALL SIGNATURES COMPLETED	
Prepared in the Office of:	M 7621 Purfoy Rd, Suite 115 Fuquay-Varina, NC 27526 www.mottmac.com/americas



LEGEND

- PROPOSED PAVEMENT REMOVAL
- PROPOSED PAVED SHOULDER
- PROPOSED APPROACH SLAB



MATCHLINE -L- STA. 565 + 00.00 SEE SHEET NO. 9

MATCHLINE -L- STA. 577 + 00.00 SEE SHEET NO. 11

<p>-L-</p> <p>PI Sta 576+78.99 $\Delta = 0^\circ 43' 57.9"$ (RT) $D = 0^\circ 12' 03.7"$ $L = 364.49'$ $T = 182.25'$ $R = 28,500.00'$</p>	<p>-Y4-</p> <p>PI Sta 16+06.46 $\Delta = 3^\circ 03' 10.8"$ (LT) $D = 0^\circ 29' 53.6"$ $L = 612.78'$ $T = 306.46'$ $R = 11,500.00'$ $RO = NC$</p>	<p>-Y4-</p> <p>PI Sta 21+04.05 $\Delta = 18^\circ 06' 45.3"$ (RT) $D = 4^\circ 46' 28.7"$ $L = 379.35'$ $T = 191.27'$ $R = 1,200.00'$ $RO = 192'$</p>	<p>-Y4-</p> <p>PI Sta 30+01.84 $\Delta = 36^\circ 39' 06.9"$ (RT) $D = 4^\circ 46' 28.7"$ $L = 767.64'$ $T = 397.47'$ $R = 1,200.00'$ $RO = 192'$</p>
--	--	--	--

-Y4DRI-

PI Sta 10+49.99
 $\Delta = 19^\circ 07' 07.3"$ (RT)
 $D = 57^\circ 17' 44.8"$
 $L = 33.37'$
 $T = 16.84'$
 $R = 100.00'$

-SR4-

PI Sta 75+99.26
 $\Delta = 2^\circ 32' 34.2"$ (RT)
 $D = 1^\circ 41' 24.5"$
 $L = 150.45'$
 $T = 75.24'$
 $R = 3,390.00'$
 $RO = 88'$

PI Sta 78+69.71
 $\Delta = 2^\circ 32' 34.2"$ (LT)
 $D = 1^\circ 41' 24.5"$
 $L = 150.45'$
 $T = 75.24'$
 $R = 3,390.00'$
 $RO = 88'$

163
 SAMUEL J. HOWARD
 DB 91 PG 357
 DB 684 PG 350
 DB 668 PG 437
 DB 64 PG 274

FOR -L- PROFILE SEE SHEET 54
 FOR -Y4- PROFILE SEE SHEET 84
 FOR -SR4- PROFILE SEE SHEET 100
 FOR -Y4DRI- PROFILE, SEE SHEET 102
 FOR DITCH DETAILS, SEE SHEETS 2D-1 THRU 2D-3
 FOR STRUCTURE PLANS, SEE SHEETS S4-1 THRU S4-29

R:\P\02022\15987B\rdy_psh_10.dgn
 5/14/2022 10:58:14 AM