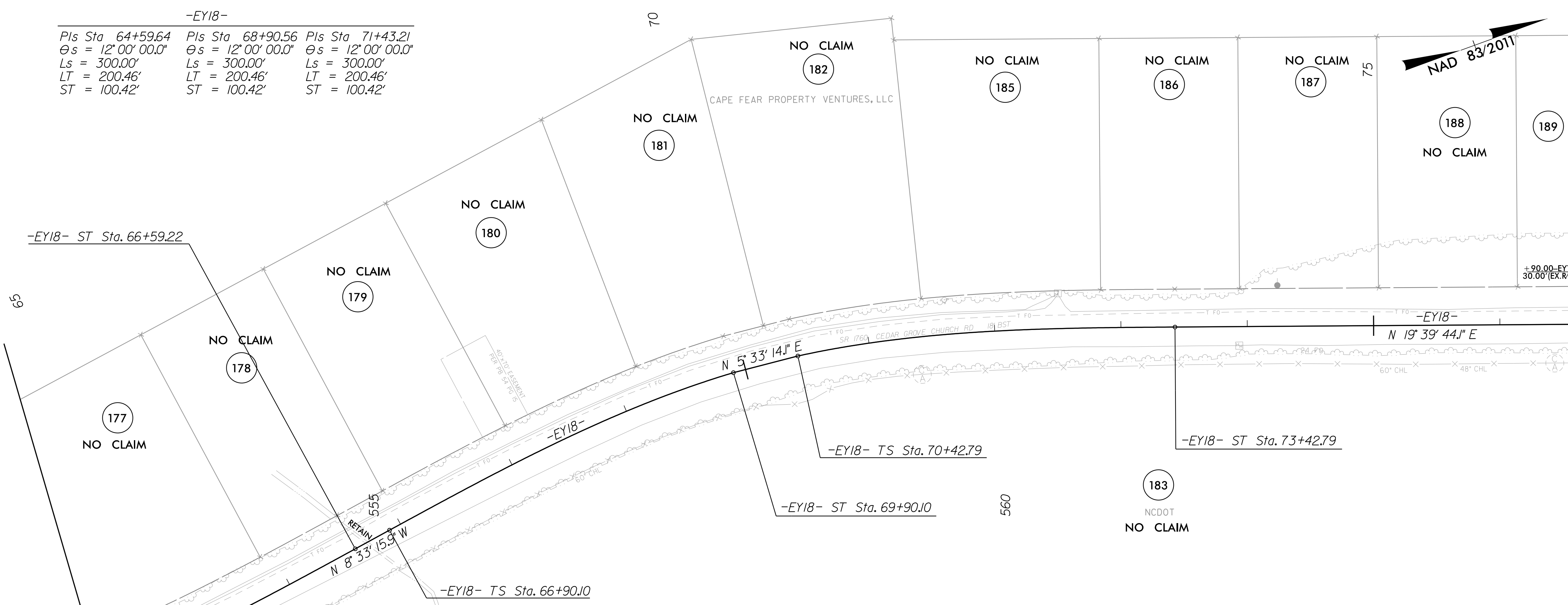


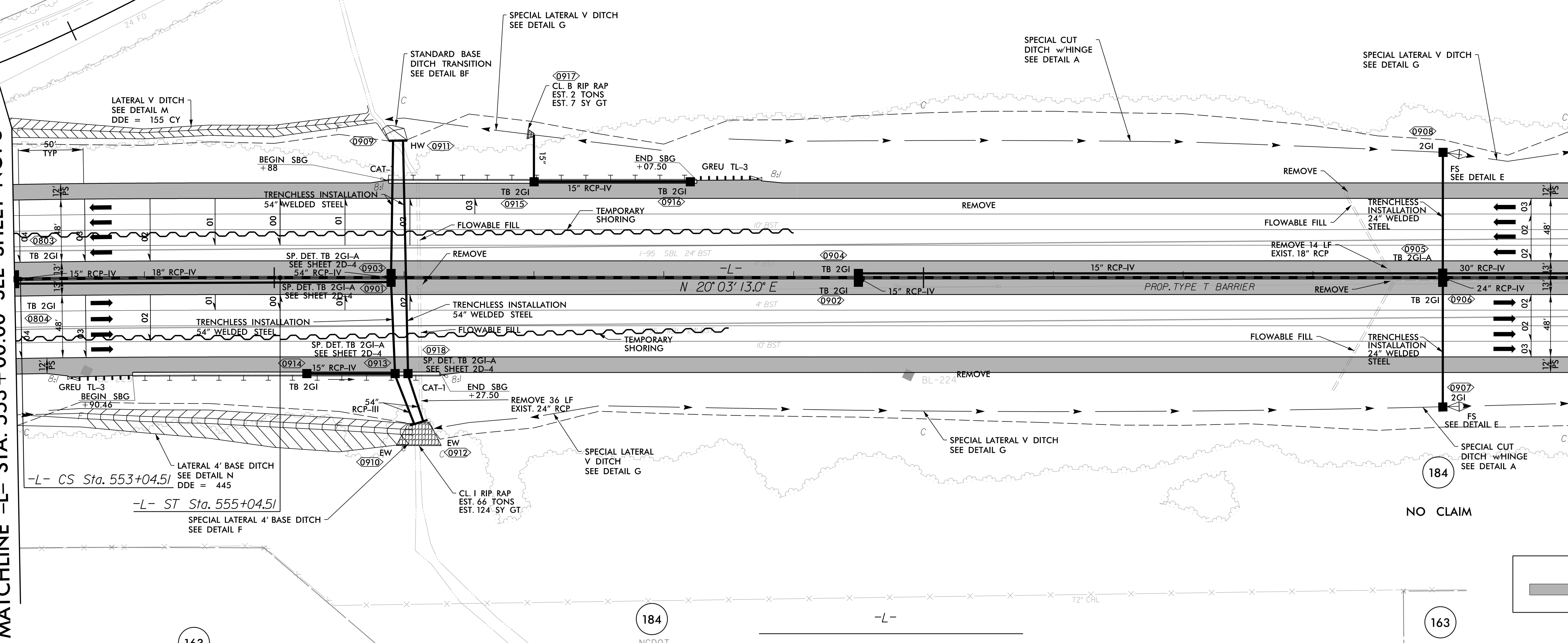
PROJECT REFERENCE NO. I-5987B	SHEET NO. 9
RW SHEET NO.	
ROADWAY DESIGN ENGINEER DAVID C. WALKER NORTH CAROLINA PROFESSIONAL ENGINEER LICENSE NO. 22808	HYDRAULICS ENGINEER ALEX W. REEG NORTH CAROLINA PROFESSIONAL ENGINEER LICENSE NO. 036821
<p>DOCUMENT NOT CONSIDERED FINAL UNLESS ALL SIGNATURES COMPLETED</p> <p>Prepared in the Office of: M MOTT MACDONALD 1 & E, LLC 7621 Purfoy Rd, Suite 115 Fuquay-Varina, NC 27526 www.mottmac.com/americas</p>	

-EY18-
 Pls Sta 64+59.64 Pls Sta 68+90.56 Pls Sta 71+43.21
 $\theta_s = 12^\circ 00' 00.0''$ $\theta_s = 12^\circ 00' 00.0''$ $\theta_s = 12^\circ 00' 00.0''$
 $L_s = 300.00'$ $L_s = 300.00'$ $L_s = 300.00'$
 $LT = 200.46'$ $LT = 200.46'$ $LT = 200.46'$
 $ST = 100.42'$ $ST = 100.42'$ $ST = 100.42'$



MATCHLINE -L- STA. 553 + 00.00 SEE SHEET NO. 8

MATCHLINE -L- STA. 565 + 00.00 SEE SHEET NO. 10



LEGEND

█ PROPOSED PAVED SHOULDER

-L-
 Pls Sta 546+06.59 Pls Sta 553+71.18
 $\Delta = 14^\circ 00' 11.8''$ (RT) $\theta_s = 0^\circ 59' 53.5''$
 $D = 0^\circ 59' 53.5''$ $L_s = 200.00'$
 $L = 1,402.87'$ $LT = 133.34'$
 $T = 704.95'$ $ST = 66.67'$
 $R = 5,740.00'$

FOR -L- PROFILE SEE SHEET 53
 FOR -EY18- PROFILE SEE SHEET 104
 FOR DITCH DETAILS, SEE SHEETS 2D-1 THRU 2D-3

4/28/2022 10:59:14 AM R:\N\Projects\15987b_rdy_psh_09.dgn