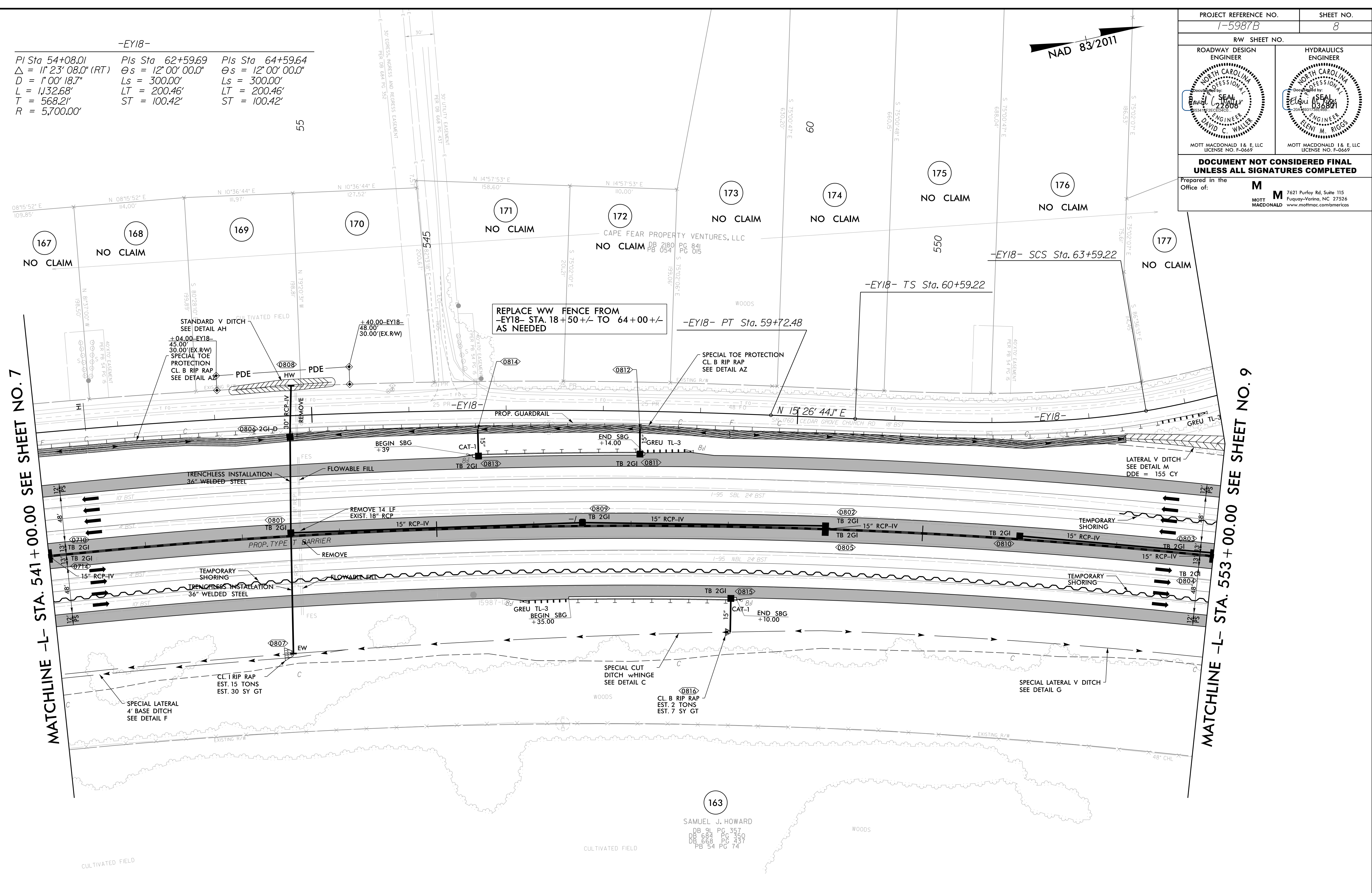


5/14/99

-EY18-

PI Sta 54+08.01	PIs Sta 62+59.69	PIs Sta 64+59.64
$\Delta = 11^{\circ}23'08.0"$ (RT)	$\Theta s = 12^{\circ}00'00.0"$	$\Theta s = 12^{\circ}00'00.0"$
$D = 1^{\circ}00'18.7"$	$Ls = 300.00'$	$Ls = 300.00'$
$L = 1,132.68'$	$LT = 200.46'$	$LT = 200.46'$
$T = 568.21'$	$ST = 100.42'$	$ST = 100.42'$
$R = 5,700.00'$		

PROJECT REFERENCE NO. 1-5987B	SHEET NO. 8
RW SHEET NO.	HYDRAULICS ENGINEER
ROADWAY DESIGN ENGINEER	ENGINEER
MOTT MACDONALD 1 & E, LLC LICENSE NO. F-0669	
MOTT MACDONALD 1 & E, LLC LICENSE NO. F-0669	
<b>DOCUMENT NOT CONSIDERED FINAL UNLESS ALL SIGNATURES COMPLETED</b>	
Prepared in the Office of:	M MOTT MACDONALD 1 & E, LLC 7621 Purfoy Rd, Suite 115 Fuquay-Varina, NC 27526 www.mothmac.com/americas



MATCHLINE -L- STA. 541 + 00.00 SEE SHEET NO. 7

MATCHLINE -L- STA. 553 + 00.00 SEE SHEET NO. 9

-L-

PI Sta 546+06.59
$\Delta = 14^{\circ}00'11.8"$ (RT)
$D = 0^{\circ}59'53.5"$
$L = 1,402.87'$
$T = 704.95'$
$R = 5,740.00'$

**LEGEND**

PROPOSED PAVED SHOULDER

FOR -L- PROFILE SEE SHEET 52  
 FOR -EY18- PROFILE SEE SHEET 104  
 FOR DITCH DETAILS, SEE SHEETS 2D-1 THRU 2D-3

R:\Projects\15987B\15987B\_rdy\_psh\_08.dgn