

5/14/09

R:\P\4\28\2022\15987b_rdy_psh_07.dgn

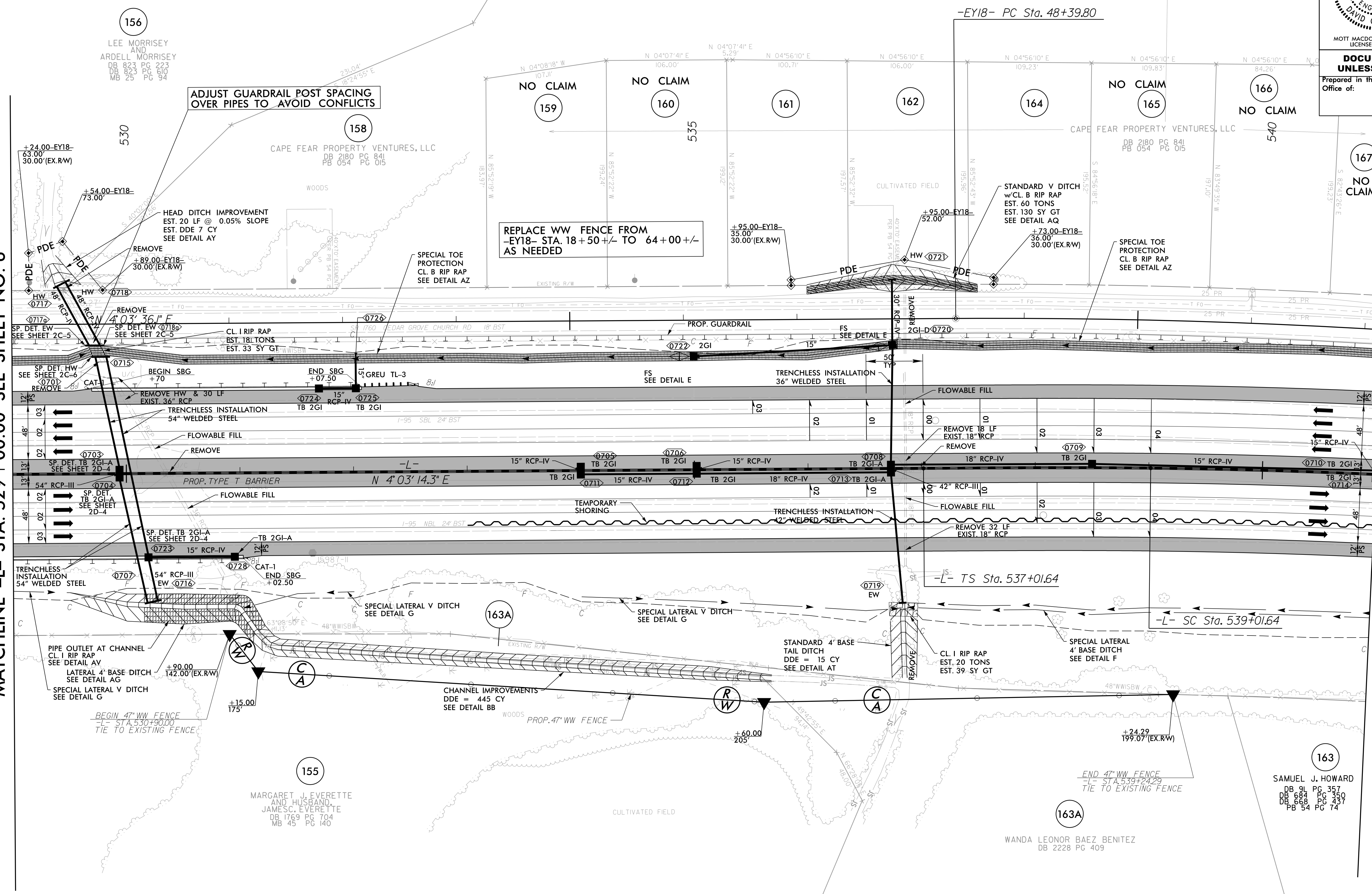
-EY18-
 PI Sta 54+08.01
 $\Delta = 11^{\circ} 23' 08.0''$ (RT)
 $D = 1^{\circ} 00' 18.7''$
 $L = 1,132.68'$
 $T = 568.21'$
 $R = 5,700.00'$

NAD 83/2011

PROJECT REFERENCE NO. 1-5987B	SHEET NO. 7
RW SHEET NO.	
ROADWAY DESIGN ENGINEER	HYDRAULICS ENGINEER
MOTT MACDONALD I & E, LLC LICENSE NO. F-0669	MOTT MACDONALD I & E, LLC LICENSE NO. F-0669
DOCUMENT NOT CONSIDERED FINAL UNLESS ALL SIGNATURES COMPLETED	
Prepared in the Office of:	M 7621 Purfoy Rd, Suite 115 Fuquay-Varina, NC 27526 MOTT MACDONALD www.mottmac.com/americas

MATCHLINE -L- STA. 529 + 00.00 SEE SHEET NO. 6

MATCHLINE -L- STA. 541 + 00.00 SEE SHEET NO. 8



-L-
 Pls Sta 538+34.97 PI Sta 546+06.59
 $\Theta_s = 0^{\circ} 59' 53.5''$ $\Delta = 14^{\circ} 00' 11.8''$ (RT)
 $L_s = 200.00'$ $D = 0^{\circ} 59' 53.5''$
 $LT = 133.34'$ $L = 1,402.87'$
 $ST = 66.67'$ $T = 704.95'$
 $R = 5,740.00'$

LEGEND

PROPOSED PAVED SHOULDER

FOR -L- PROFILE SEE SHEET 51
 FOR -EY18- PROFILE SEE SHEETS 103 THRU 104
 FOR DITCH DETAILS, SEE SHEETS 2D-1 THRU 2D-3