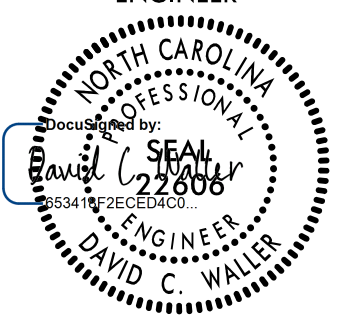


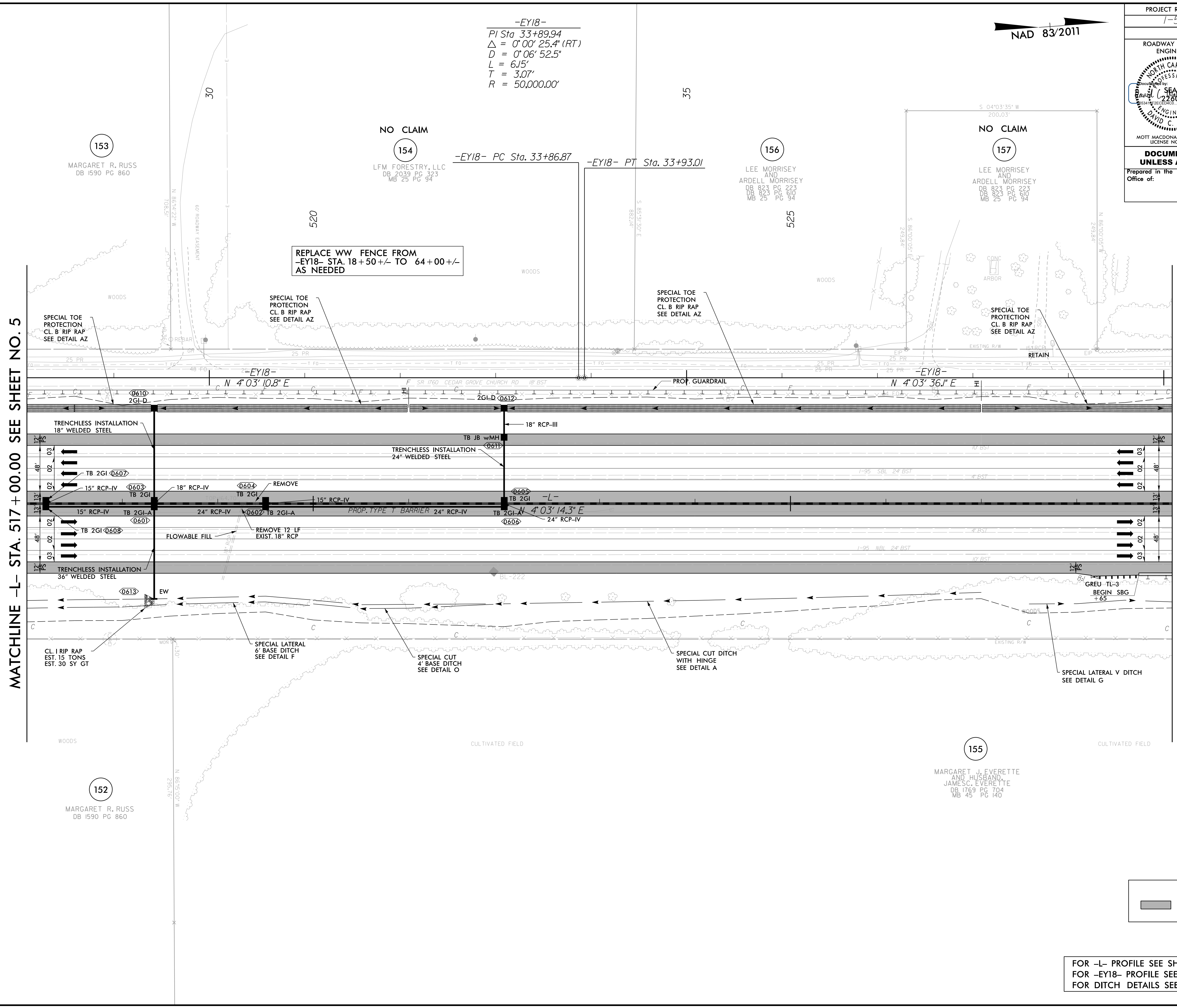


5/14/99
 R:\Projects\15987b_rdy_psh_06.dgn
 4/21/2022
 MOTT MACDONALD

PROJECT REFERENCE NO. 1-5987B		SHEET NO. 6	
RW SHEET NO.		HYDRAULICS ENGINEER	
ROADWAY DESIGN ENGINEER		NORTH CAROLINA PROFESSIONAL ENGINEER	
			
MOTT MACDONALD I & E, LLC LICENSE NO. F-0669		MOTT MACDONALD I & E, LLC LICENSE NO. F-0669	
DOCUMENT NOT CONSIDERED FINAL UNLESS ALL SIGNATURES COMPLETED			
Prepared in the Office of:			
		7621 Purfoy Rd, Suite 115 Fuquay-Varina, NC 27526 www.mottmac.com/americas	



-EY18-
 PI Sta 33+89.94
 $\Delta = 0^{\circ}00'25.4\" (RT)$
 $D = 0^{\circ}06'52.5\"$
 $L = 6.15'$
 $T = 3.07'$
 $R = 50,000.00'$

NAD 83/2011

REPLACE WW FENCE FROM
-EY18- STA. 18+50+/- TO 64+00+/-
AS NEEDED

MATCHLINE -L- STA. 517 + 00.00 SEE SHEET NO. 5

MATCHLINE -L- STA. 529 + 00.00 SEE SHEET NO. 7

LEGEND

 PROPOSED PAVED SHOULDER

FOR -L- PROFILE SEE SHEET 50
 FOR -EY18- PROFILE SEE SHEET 103
 FOR DITCH DETAILS SEE SHEETS 2D-1 THRU 2D-3