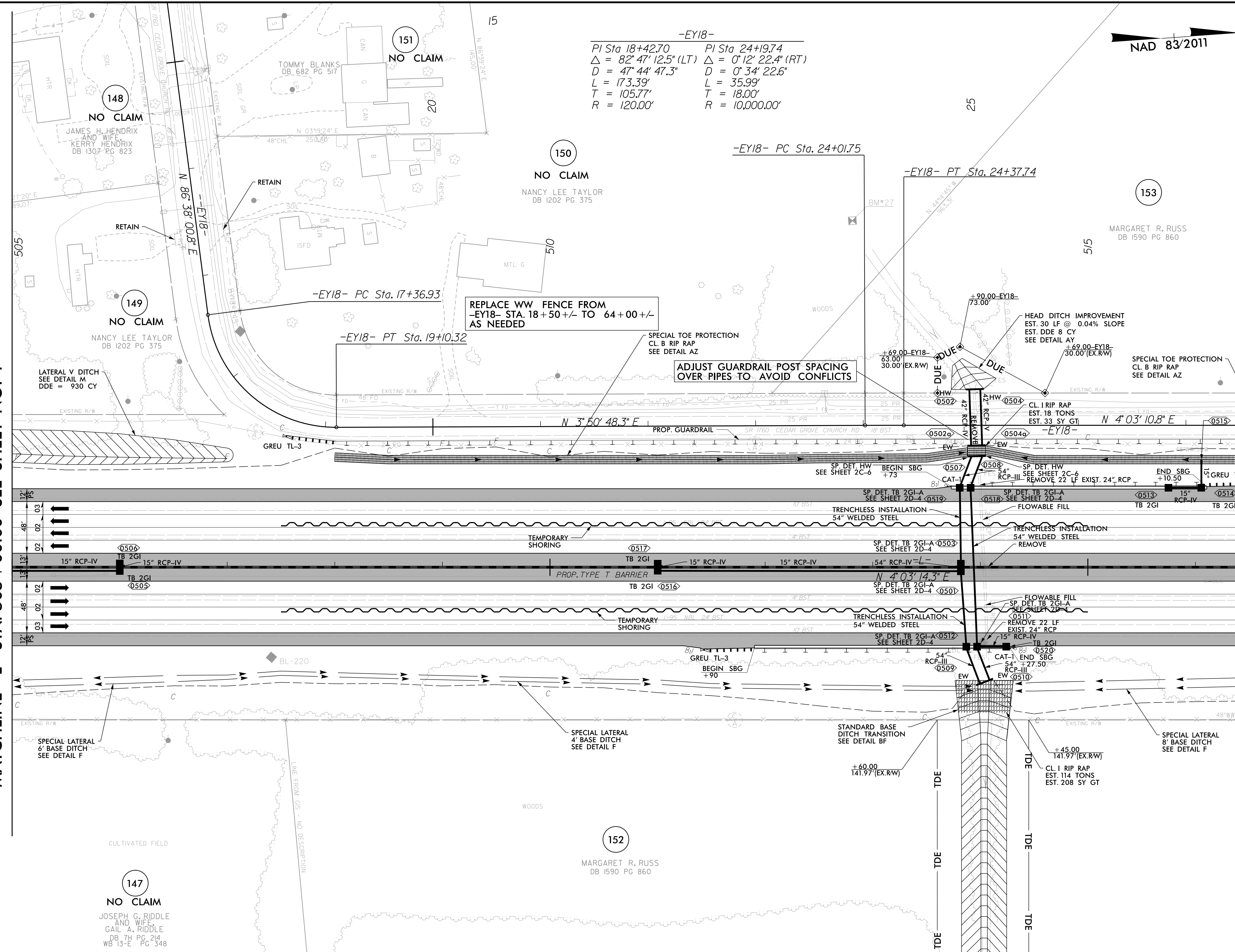
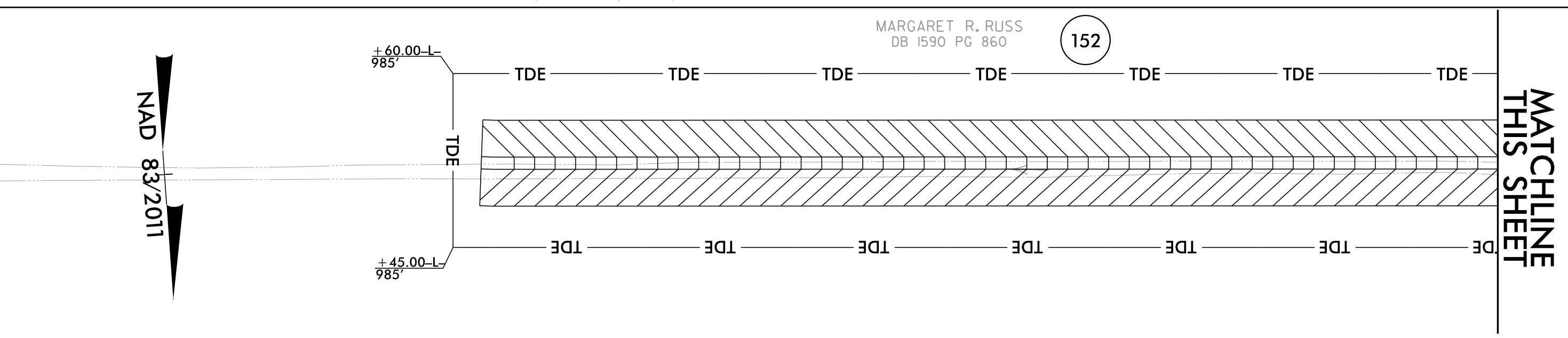


PROJECT REFERENCE NO. 1-5987B	SHEET NO. 5
RW SHEET NO.	
ROADWAY DESIGN ENGINEER DAVID C. WALKER NORTH CAROLINA PROFESSIONAL ENGINEER LICENSE NO. 22808	HYDRAULICS ENGINEER GLENN W. RYGG NORTH CAROLINA PROFESSIONAL ENGINEER LICENSE NO. 036821
MOTT MACDONALD 1 & E, LLC LICENSE NO. F-0669	
<p>DOCUMENT NOT CONSIDERED FINAL UNLESS ALL SIGNATURES COMPLETED</p> <p>Prepared in the Office of: M</p> <p>M 7621 Purfoy Rd, Suite 115 Fuquay-Varina, NC 27526 MOTT MACDONALD www.mottmac.com/americas</p>	



MATCHLINE -L- STA. 505 + 00.00 SEE SHEET NO. 4

MATCHLINE -L- STA. 517 + 00.00 SEE SHEET NO. 6



MATCHLINE SEE INSET, THIS SHEET

LEGEND

▨ PROPOSED PAVED SHOULDER

FOR -L- PROFILE SEE SHEET 50
FOR -EY18- PROFILE SEE SHEET 103
FOR DITCH DETAILS, SEE SHEETS 2D-1 THRU 2D-3

4/28/2022 10:59:14 AM R:\P\15987B\15987B.rdw psh_05.dgn