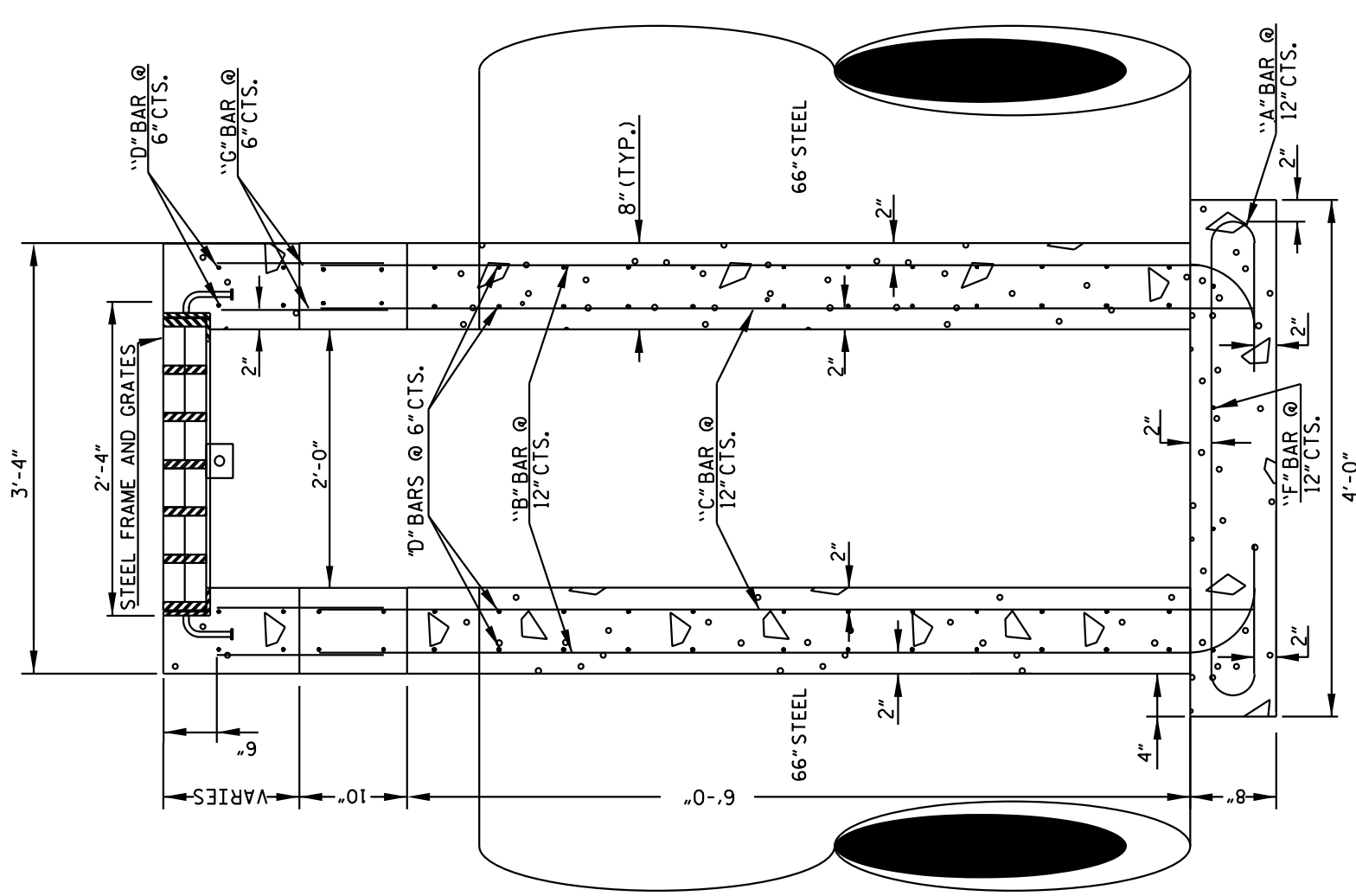


8/17/199 4/29/2022 G:\SP-09\ec\2019\2019217\02\CLIENT\Structures\Special Drainage\_Box\15987B\_RDY\_PSH\_2D-6.dgn 11:01:22 AM

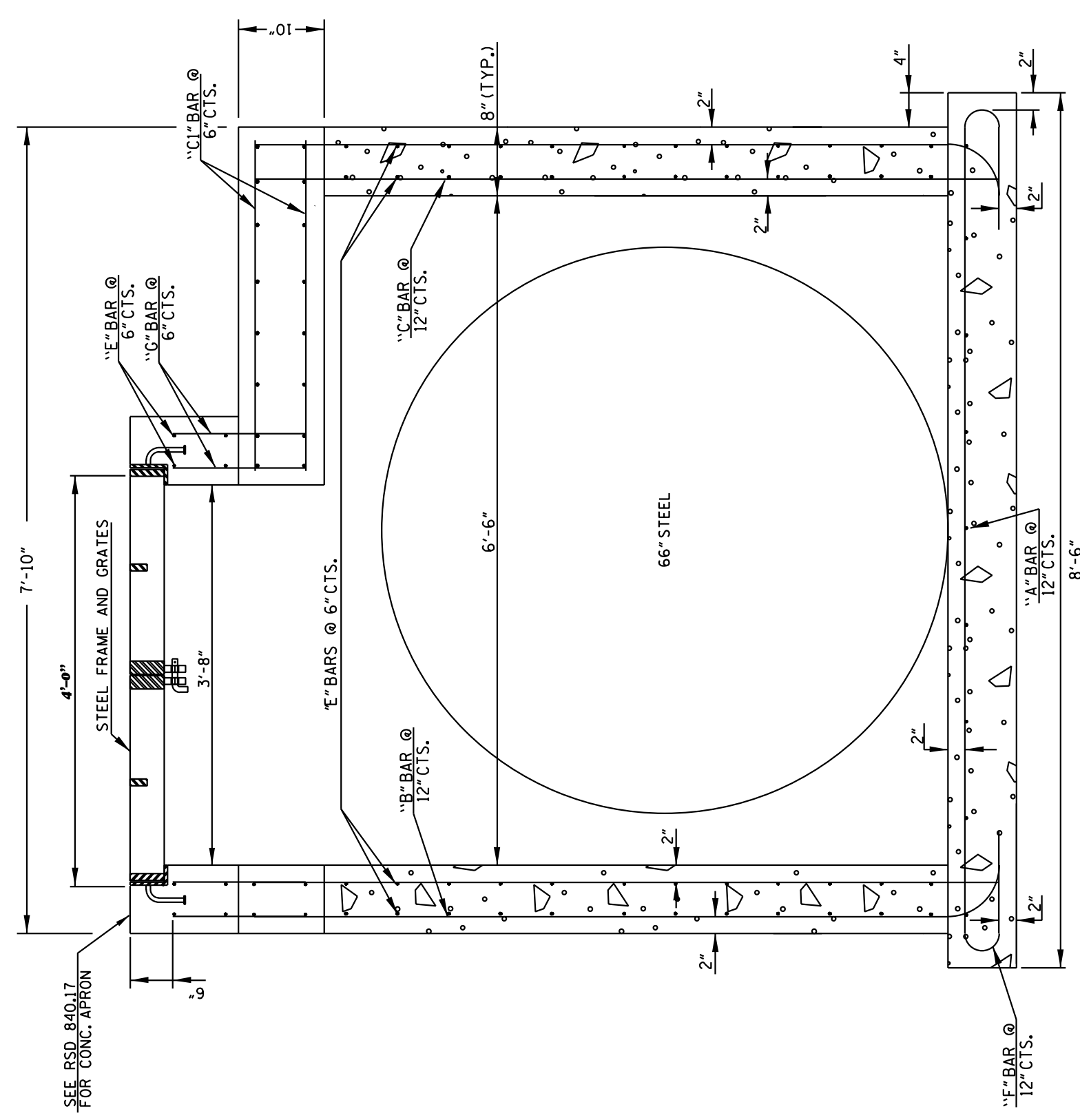
STATE OF NORTH CAROLINA DEPT. OF TRANSPORTATION DIVISION OF HIGHWAYS RALEIGH, N.C.

ENGLISH DETAIL DRAWING FOR TRAFFIC BEARING GRATED INLET FOR 66" STEEL PIPES

SHEET 1 OF 2 840D36



SECTION Y-Y



SECTION X-X

- GENERAL NOTES: -BUILD WITH CLASS 'AA' CONCRETE CORNERS 3" CHAMFER ALL CORNERS CONCRETE BOTTOM BAR... -IF PIPES ARE SET IN THE BASE, FOLLOW CONSTRUCTION PROCEDURES SHOWN BY STD. DWG. 840.00. -PRECAST UNITS CONCRETE MAY BE USED. REFERENCE STD. DWG. 840.31 FOR FRAME ANCHORAGE. -PROVIDE DROP INLETS OVER 3'-6" DEEP WITH STEPS AS DIRECTED BY STD. DWG. 840.66. -FRAME AND GRATES ARE SEPARATE CONTRACT ITEM.

- NOTES: -HORIZONTAL (UP TO 10" MAX. IN BOTH DIRECTIONS) AND VERTICAL (UP TO 14" MAX.) DIMENSIONS MAY BE ADJUSTED AS THE FIELD CONDITIONS AND/OR ALTERNATE DESIGNS REQUIRE. -ALL ADJUSTMENTS ARE TO BE MADE AS DIRECTED BY THE ENGINEER.

STATE OF NORTH CAROLINA DEPT. OF TRANSPORTATION DIVISION OF HIGHWAYS RALEIGH, N.C.

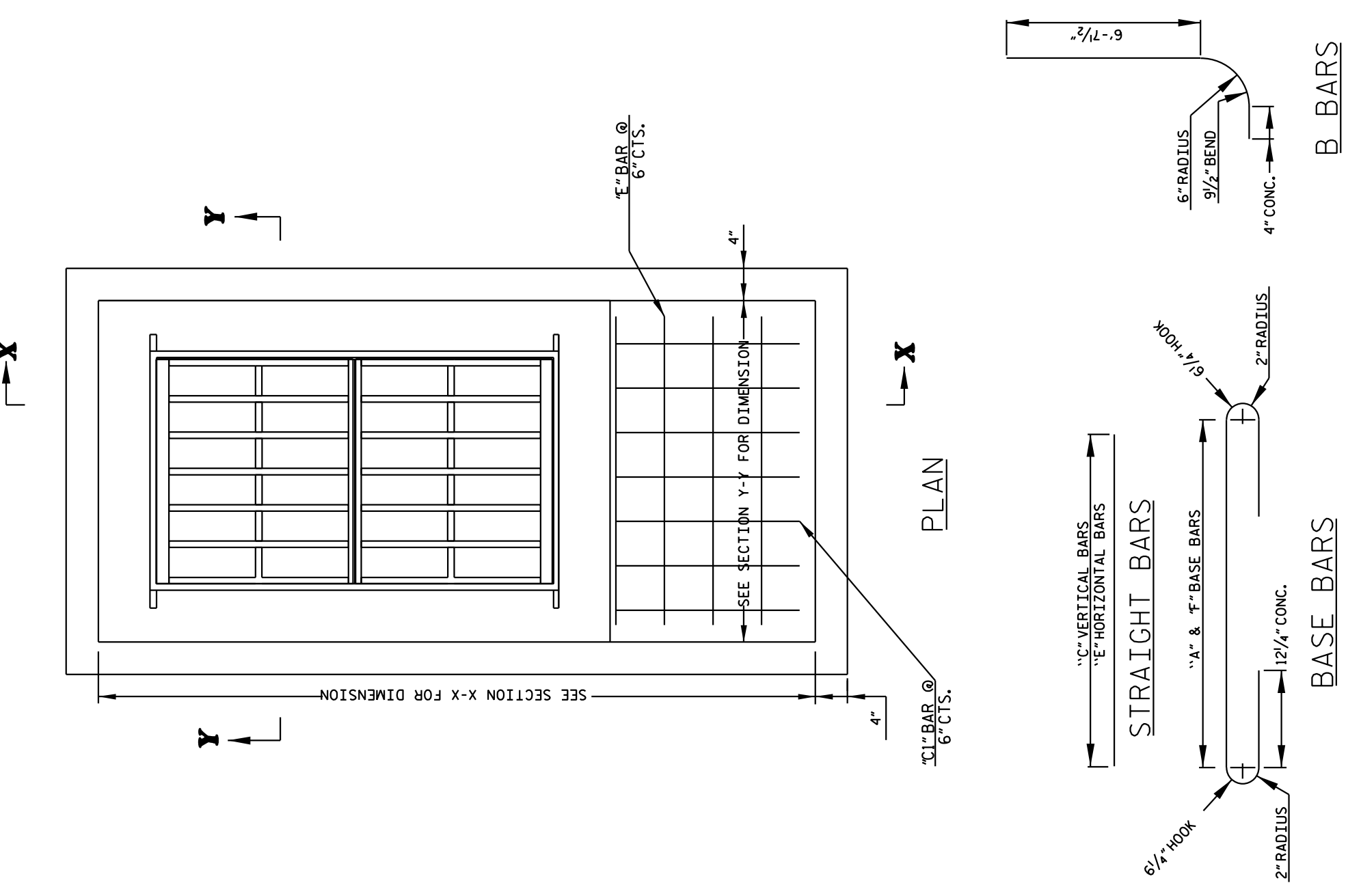
ENGLISH DETAIL DRAWING FOR TRAFFIC BEARING GRATED INLET FOR 66" STEEL PIPES

SHEET 1 OF 2 840D36

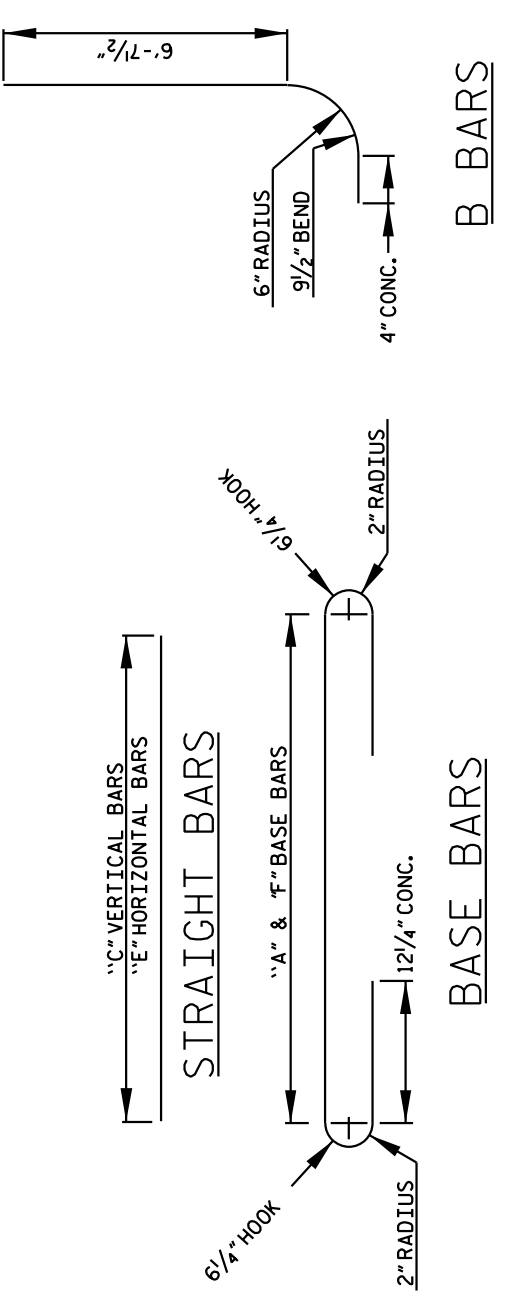
STATE OF NORTH CAROLINA DEPT. OF TRANSPORTATION DIVISION OF HIGHWAYS RALEIGH, N.C.

ENGLISH DETAIL DRAWING FOR TRAFFIC BEARING GRATED INLET FOR 66" STEEL PIPES

SHEET 2 OF 2 840D36

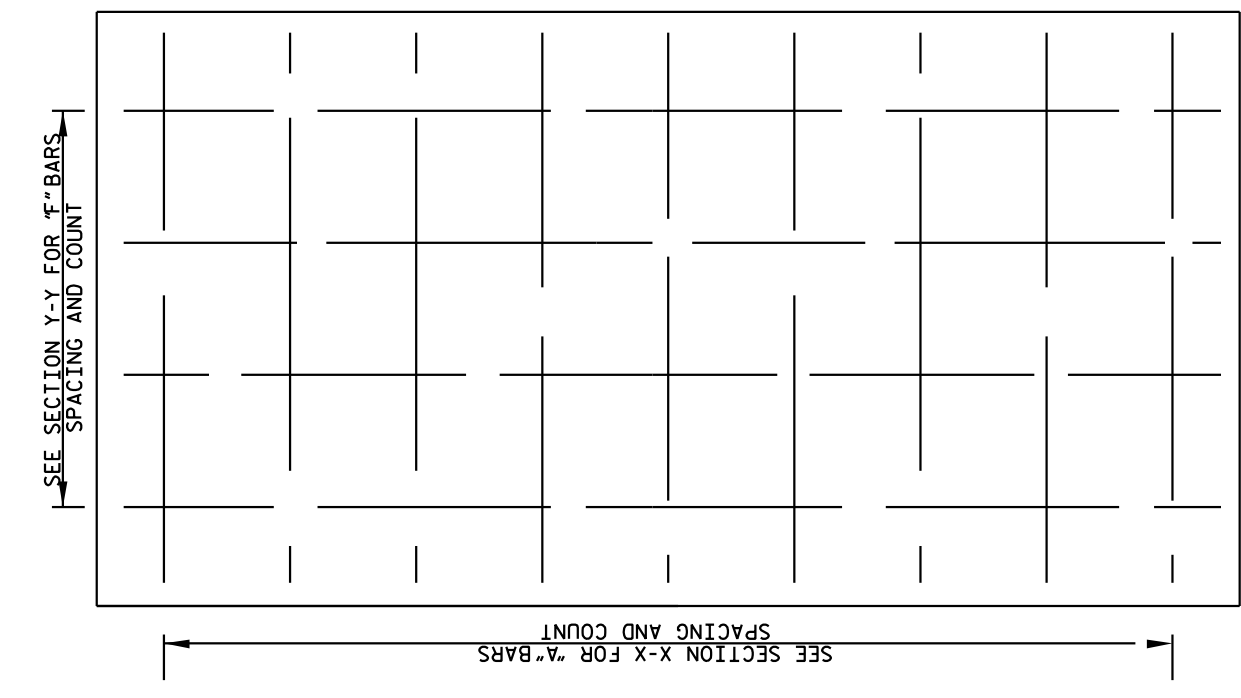


PLAN



B BARS

BASE BARS



PLAN OF BASE

Table with columns: BAR, SIZE, LENGTH, QUANTITY, WEIGHT. Includes a summary row for REINF. STEEL TOTAL WEIGHT LBS. and CONCRETE TOTAL CU.YDS. CLASS 'AA'.

FOR EVERY 1 FOOT OF RISER USE 0.41 CU.YDS CONCRETE AND 151 LBS STEEL.

STATE OF NORTH CAROLINA DEPT. OF TRANSPORTATION DIVISION OF HIGHWAYS RALEIGH, N.C.

ENGLISH DETAIL DRAWING FOR TRAFFIC BEARING GRATED INLET FOR 66" STEEL PIPES

SHEET 2 OF 2 840D36

PROJECT REFERENCE NO. 1-5987B SHEET NO. 2D-6. STRUCTURE DESIGN ENGINEER. NORTH CAROLINA PROFESSIONAL ENGINEERS. L. Kevin Austin, Kevin Austin. 4/29/2022. DOCUMENT NOT CONSIDERED FINAL UNLESS ALL SIGNATURES COMPLETED. Prepared in the Office of: MOTT MACDONALD. NV5 ENGINEERS & CONSULTANTS, INC. 7500 E. INDEPENDENCE BLVD, STE 100 CHARLOTTE, NC 28227