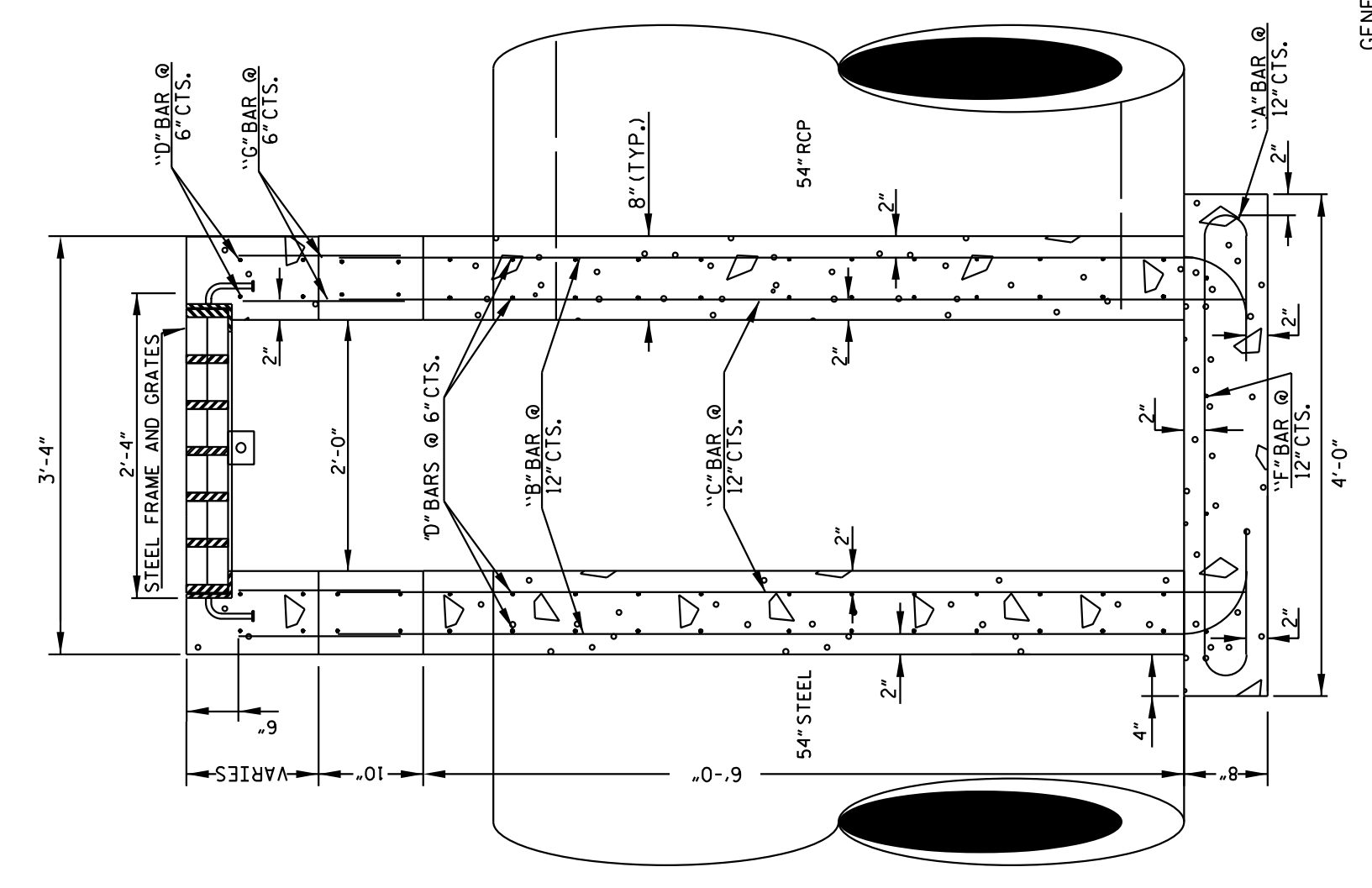


4/29/2022 6:15 PM C:\projects\2019\2019217\02\CLIENT\Structures\Special_Drainage_Box\15987B_RDY_PSH_2D-4.dgn
 8/17/99

STATE OF NORTH CAROLINA
 DEPT. OF TRANSPORTATION
 DIVISION OF HIGHWAYS
 RALEIGH, N.C.



SECTION Y-Y

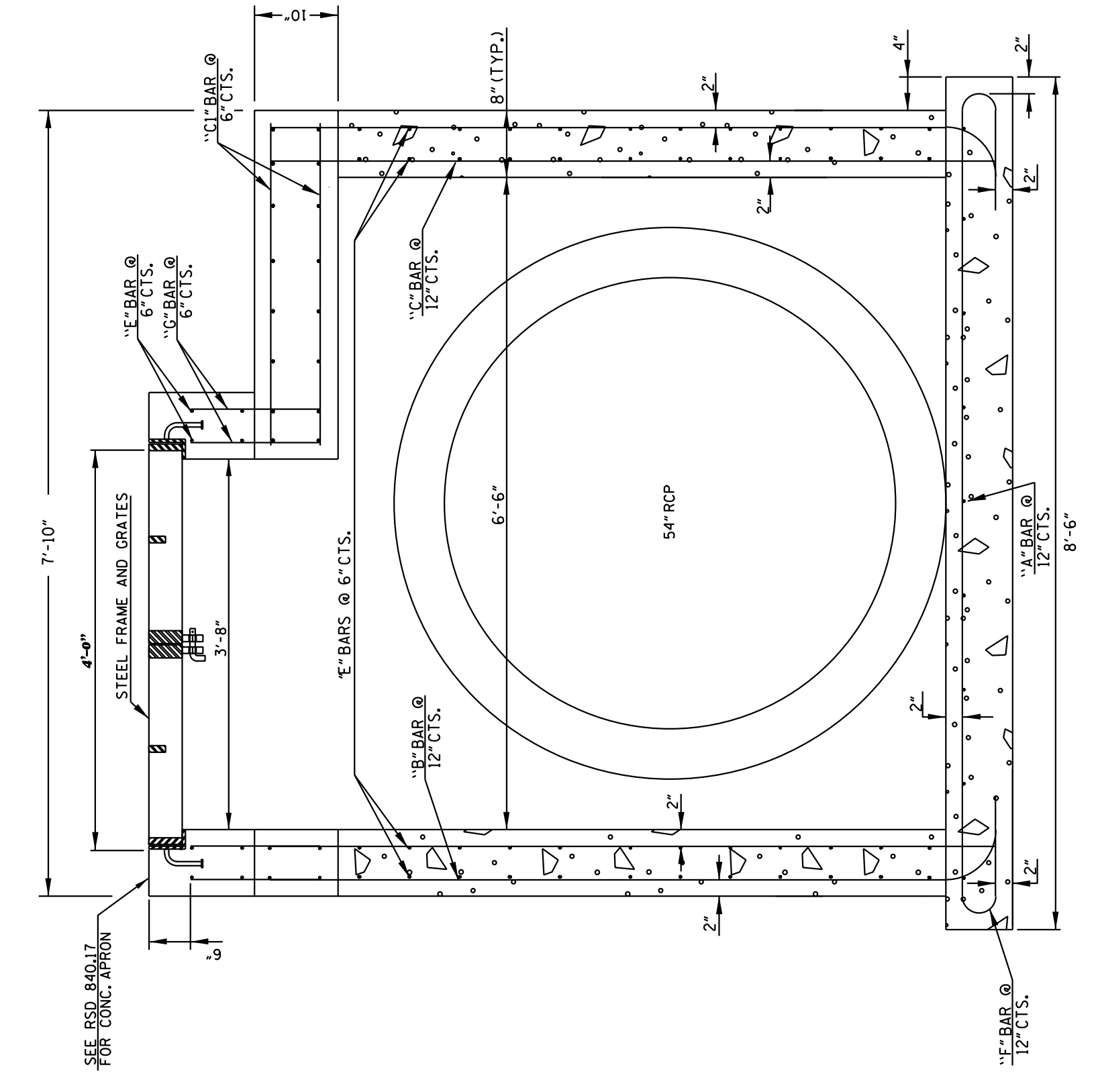
- GENERAL NOTES:
- BUILD WITH CLASS "AA" CONCRETE CORNERS 3"
 - CHAMFER ALL CORNERS OF CONCRETE
 - USE WEDGES TO CONSIDER THE BOTTOM BAR
 - IF PIPES ARE SET IN THE BASE, FOLLOW CONSTRUCTION PROCEDURES SHOWN BY STD. DWG. 840.00.
 - PRECAST UNITS CONCRETE MAY BE USED
 - USE ANGLE IRON FOR FRAME ANCHORAGE
 - PROVIDE STD. DWG. 840.31 FOR FRAME ANCHORAGE
 - PROVIDE DROP INLETS OVER 3'-6" DEEP WITH STEPS AS DIRECTED BY STD. DWG. 840.66.
 - FRAME AND GRATES ARE SEPARATE CONTRACT ITEM.

- NOTES:
- HORIZONTAL (UP TO 10" MAX. IN BOTH DIRECTIONS) AND VERTICAL (UP TO 14" MAX.) DIMENSIONS MAY BE ADJUSTED AS THE FIELD CONDITIONS AND/OR ALTERNATE DESIGNS REQUIRE.
 - ALL ADJUSTMENTS ARE TO BE MADE AS DIRECTED BY THE ENGINEER.

SHEET 1 OF 2
 840D36

STATE OF NORTH CAROLINA
 DEPT. OF TRANSPORTATION
 DIVISION OF HIGHWAYS
 RALEIGH, N.C.

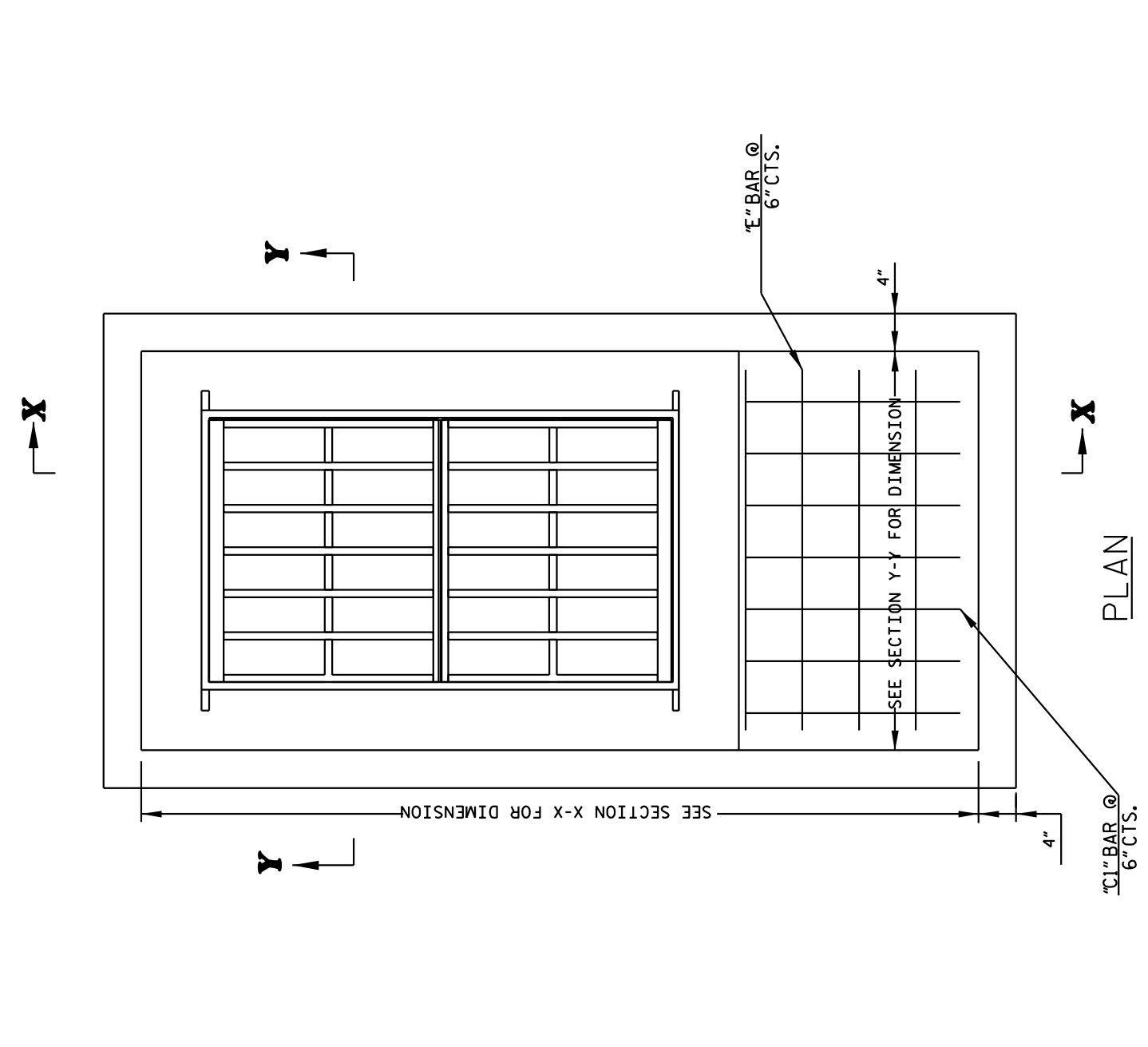
ENGLISH DETAIL DRAWING FOR
 TRAFFIC BEARING GRATED INLET
 FOR PIPES UP TO 54"



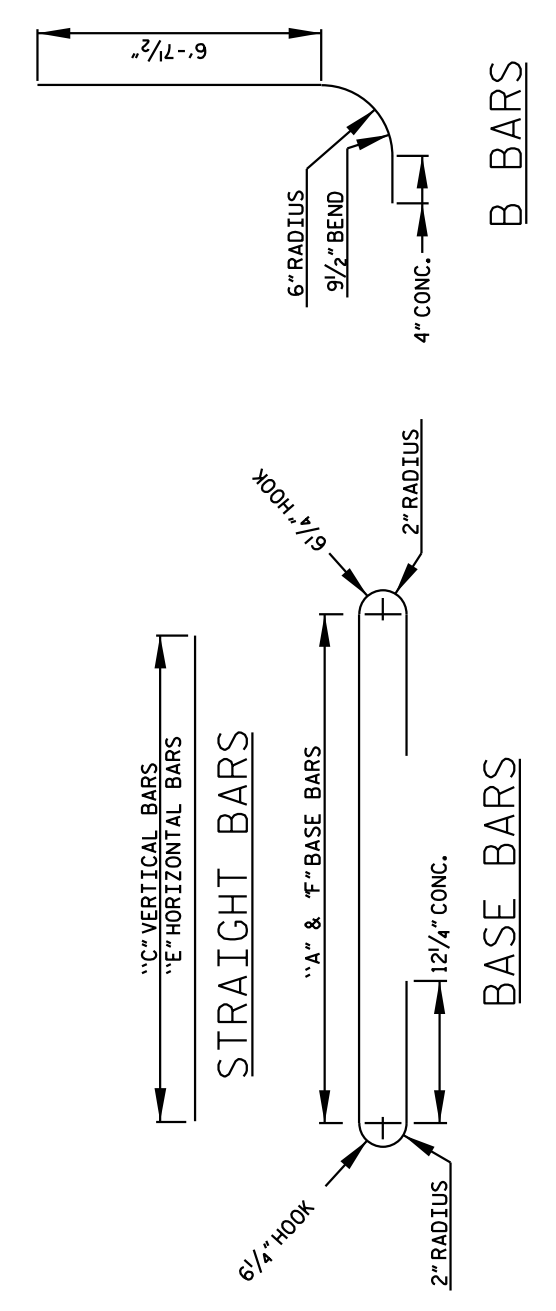
SECTION X-X

SHEET 1 OF 2
 840D36

STATE OF NORTH CAROLINA
 DEPT. OF TRANSPORTATION
 DIVISION OF HIGHWAYS
 RALEIGH, N.C.



PLAN



STRAIGHT BARS

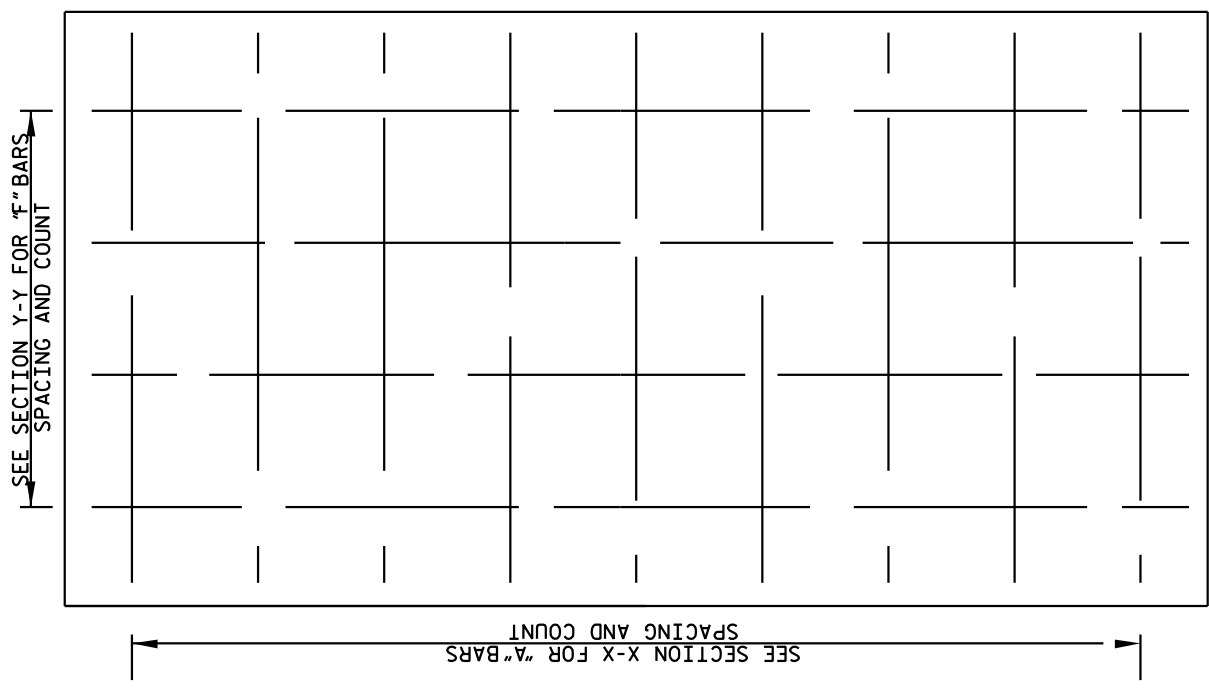
BASE BARS

B BARS

SHEET 2 OF 2
 840D36

STATE OF NORTH CAROLINA
 DEPT. OF TRANSPORTATION
 DIVISION OF HIGHWAYS
 RALEIGH, N.C.

ENGLISH DETAIL DRAWING FOR
 TRAFFIC BEARING GRATED INLET
 FOR PIPES UP TO 54"



PLAN OF BASE

BILL OF MATERIALS

BAR	SIZE	LENGTH	QUANTITY	WEIGHT
A	#5	6'-5"	9	60
B	#5	7'-9"	22	178
C	#5	7'-2"	22	164
D	#5	3'-2"	7	23
E	#5	7'-6"	64	501
F	#5	3'-0"	76	238
G	#5	10'-11"	4	46
			60	99
REINF. STEEL (TOTAL WEIGHT LBS.)				1309
CONCRETE (TOTAL CU.YDS.) CLASS "AA"				5.1
NO DEDUCTIONS HAVE BEEN MADE TO ACCOMMODATE PIPES				

FOR EVERY 1 FOOT OF RISER USE 0.41 CU.YDS CONCRETE AND 151 LBS STEEL.

NV5
 NV5 ENGINEERS & CONSULTANTS, INC.
 7500 E. INDEPENDENCE BLVD, STE 100
 CHARLOTTE, NC 28227
 P: 704.537.7300 www.NV5.com
 NC License # F-1333

Prepared in the Office of: **M**
 MOTT MACDONALD
 7621 Purfoy Rd, Suite 115
 Fuquay-Varina, NC 27526
 www.mottmac.com/americas

DOCUMENT NOT CONSIDERED FINAL
 UNLESS ALL SIGNATURES COMPLETED

PROJECT REFERENCE NO. 1-5987B
 SHEET NO. 2D-4
 STRUCTURE DESIGN ENGINEER
 NORTH CAROLINA PROFESSIONAL ENGINEER
 L. Kevin Austin
 7/21/2022
 KEVIN AUSTIN
 4/29/2022