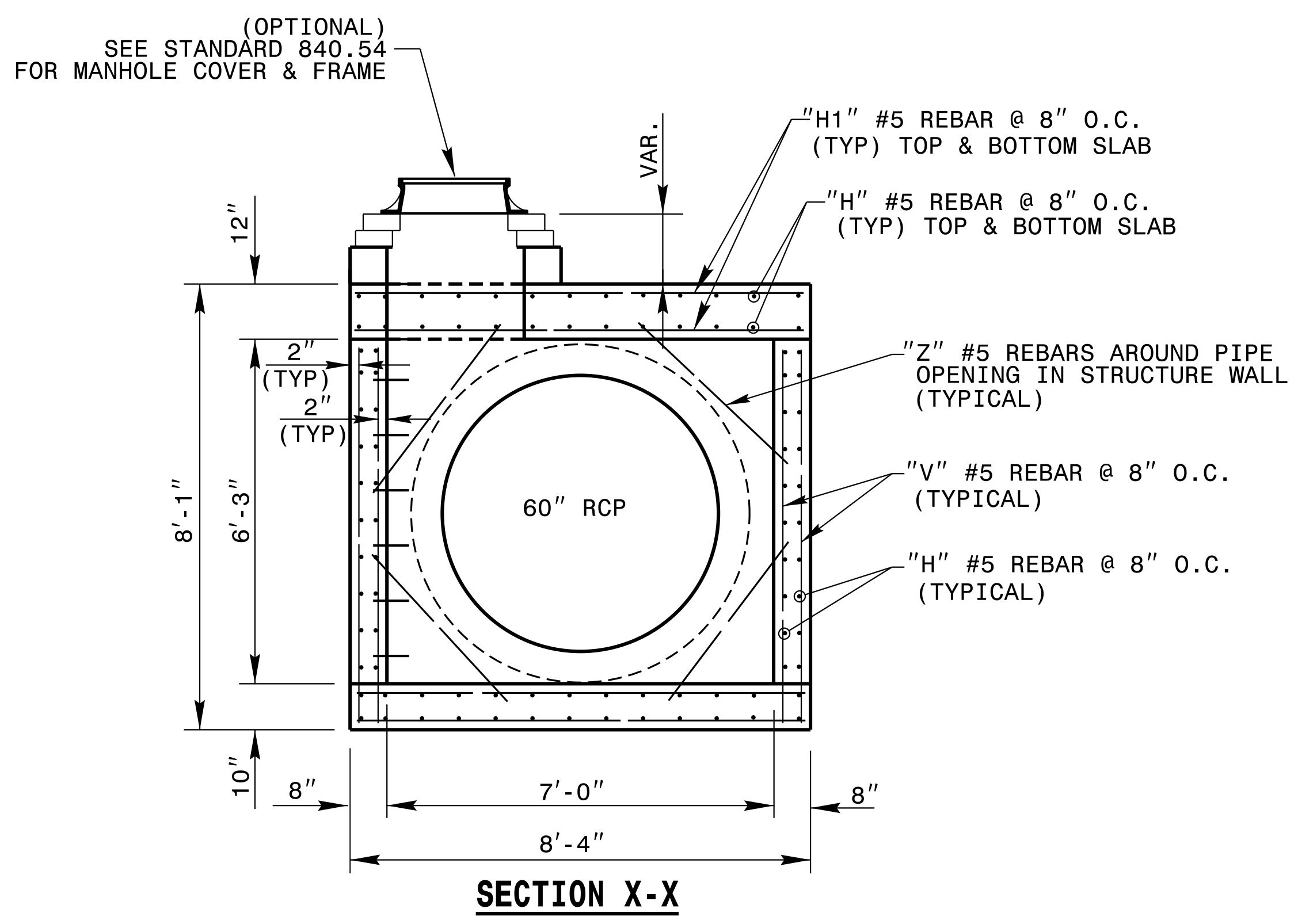




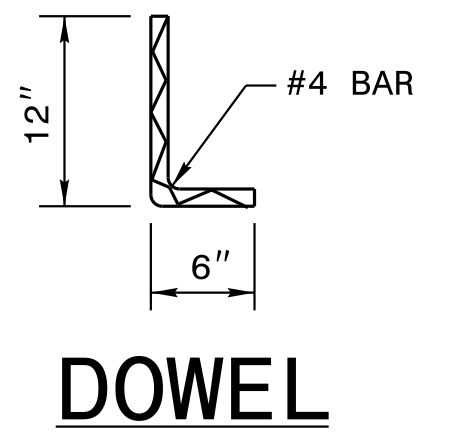
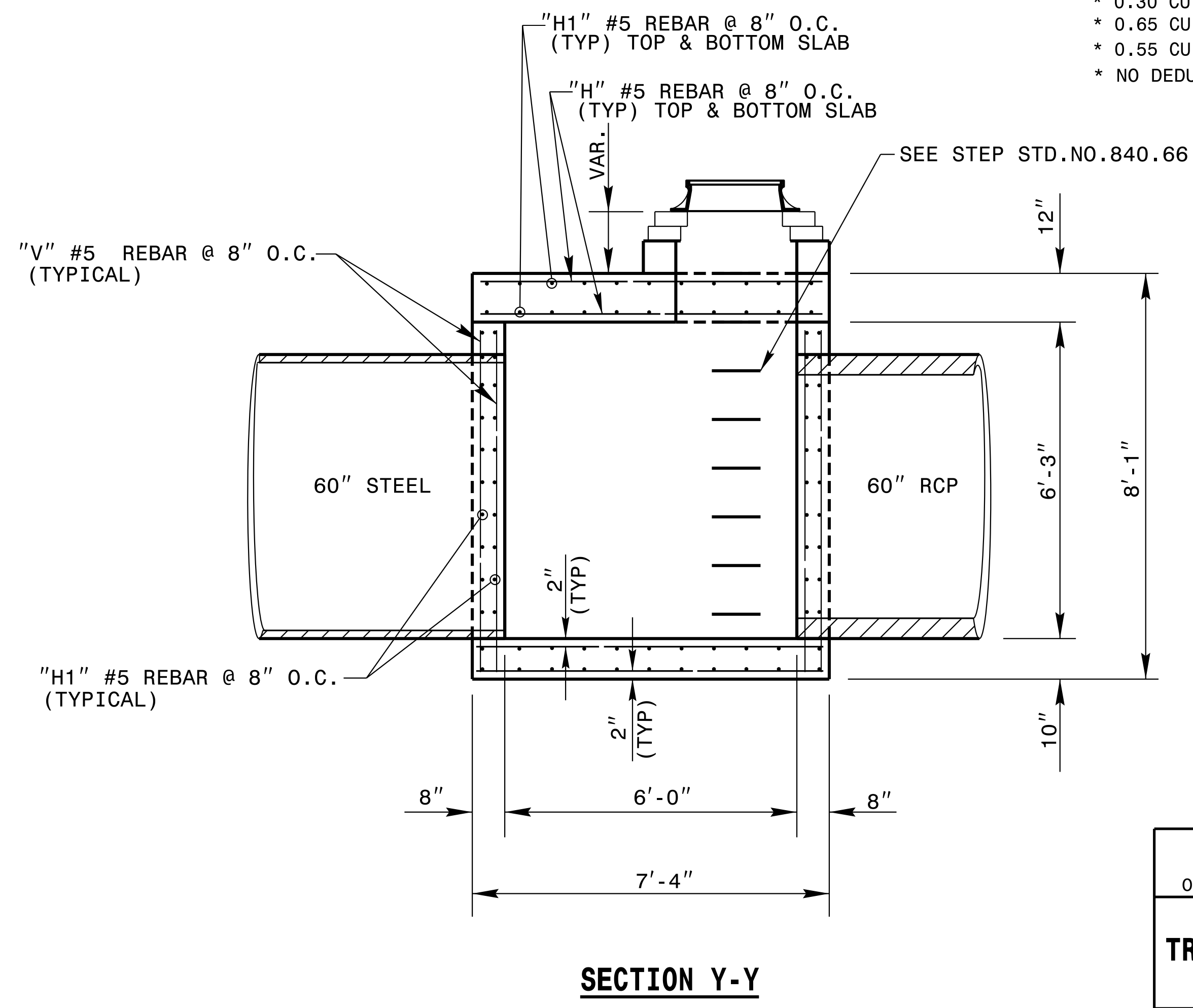
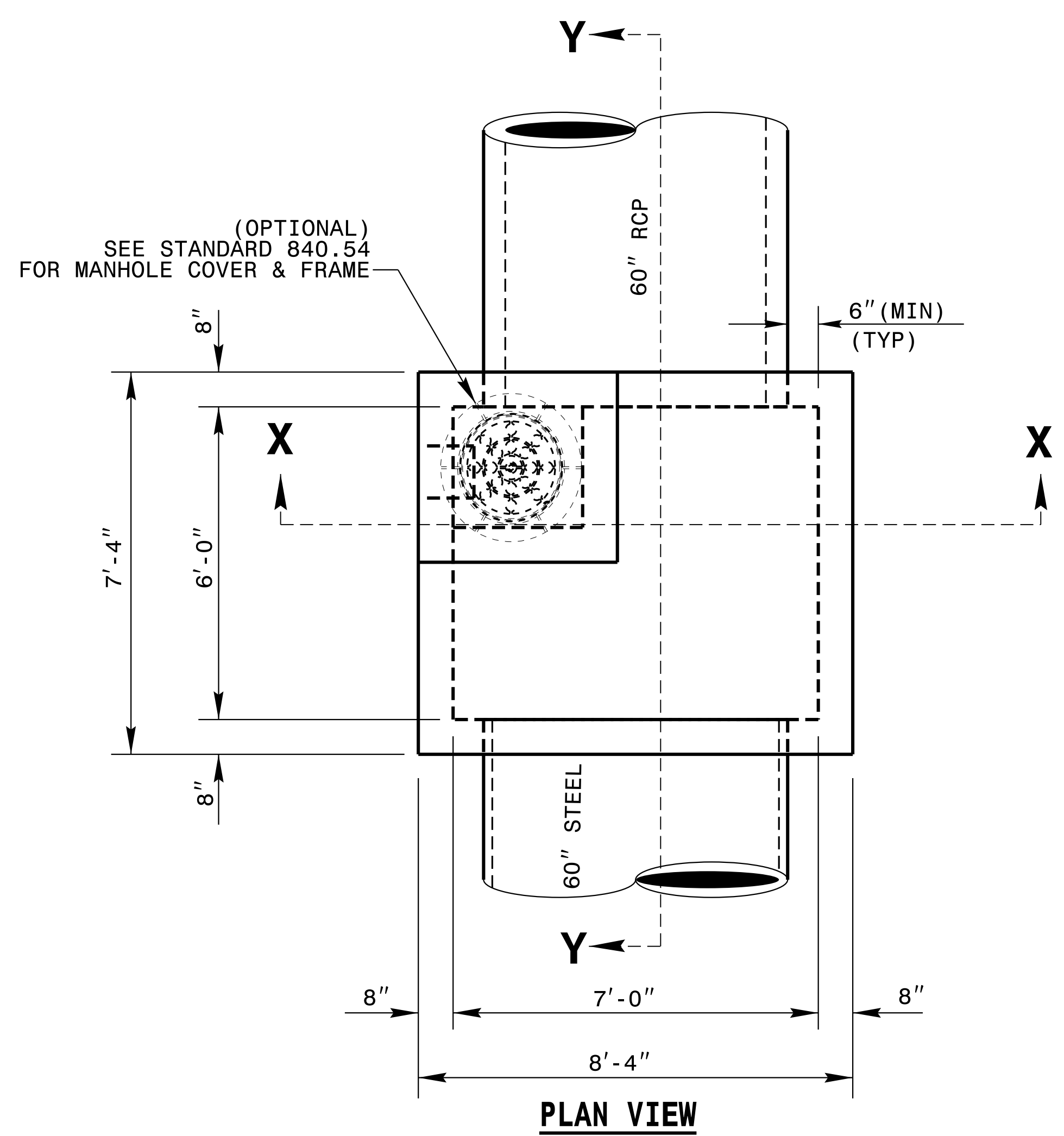
GENERAL NOTES:
 USE CLASS "AA" CONCRETE THROUGHOUT.
 PROVIDE ALL JUNCTION BOXES OVER 3'-6" IN DEPTH WITH STEPS 12" ON CENTER. USE STEPS WHICH COMPLY WITH STD. DRAWING 840.66.
 OPTIONAL CONSTRUCTION - MONOLITHIC POUR, 2" KEYWAY, OR #4 BAR DOWELS AT 12" CENTERS AS DIRECTED BY THE ENGINEER.
 USE FORMS FOR THE CONSTRUCTION OF THE BOTTOM SLAB.
 INSTALL MANHOLE IN POSITION AS DIRECTED BY THE ENGINEER. CUT AND BEND ALL REBAR CROSSING THIS OPENING TO ALLOW 2" MINIMUM CONCRETE COVERAGE.
 CHAMFER ALL EXPOSED CORNERS 1".
 2" MINIMUM CONCRETE COVERAGE ON ALL REBAR.



BILL OF MATERIALS

BAR	NO.	SIZE	LENGTH	WEIGHT
H	92	#5	7'-0"	672
H1	84	#5	8'-0"	701
V	92	#5	6'-9"	648
Z	16	#5	4'-0"	67
TOTAL REINF. STEEL (LBS.)				2088
TOTAL CONC. (CU. YDS.)				8.8

* 0.30 CU. YD. PER FOOT OF RISER HEIGHT
 * 0.65 CU. YD. DEDUCTION FOR 1-60" RC PIPE
 * 0.55 CU. YD. DEDUCTION FOR 1-60" STEEL PIPE
 * NO DEDUCTION HAS BEEN MADE FOR PIPES



**CONTRACT, STANDARDS
AND DEVELOPMENT UNIT**
 Office 919-707-6900 FAX 919-250-4119

TRAFFIC BEARING JUNCTION BOX

ORIGINAL BY: nbritt DATE: 07/22/05
 MODIFIED BY: kkempf DATE: 07/01/19
 CHECKED BY: DATE:
 FILE SPEC.: detail/kkempf/english/A-0011C 60 tbjb.dgn

05-JUL-2019 16:35
 S:\Contracts\Special Details\kkempf\english\A-0011C 60 tbjb.dgn
 kkempf AT CSD-2925%

5/14/99