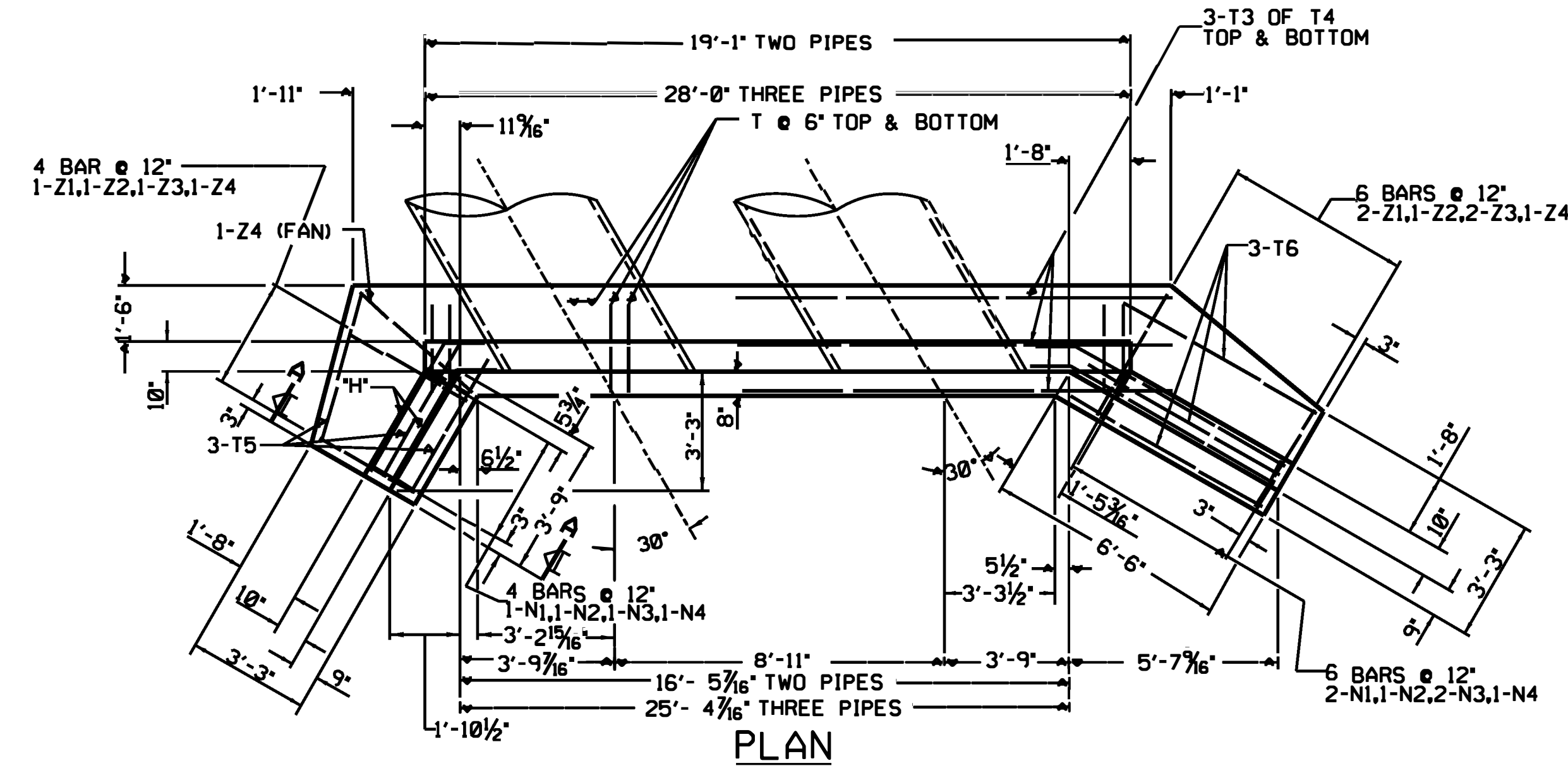


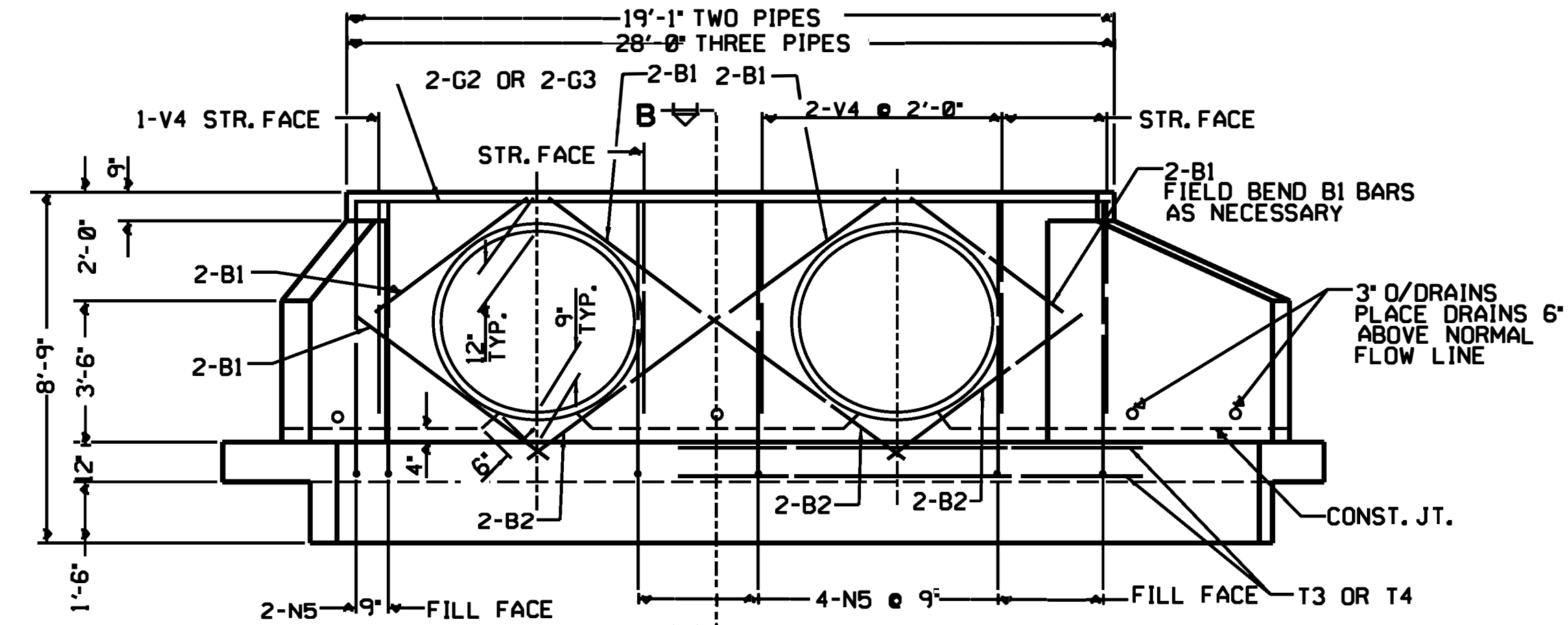
STATE OF NORTH CAROLINA DEPT. OF TRANSPORTATION DIVISION OF HIGHWAYS RALEIGH, N.C.

ENGLISH DETAIL DRAWING FOR REINFORCED CONCRETE ENDWALL FOR DOUBLE & TRIPLE 54" PIPE 60° OR 120° SKEW

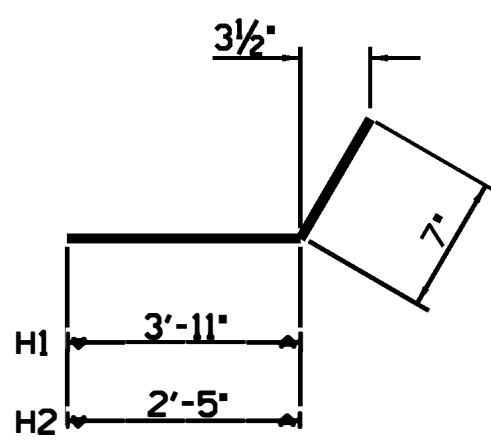
SHEET 1 OF 838D24



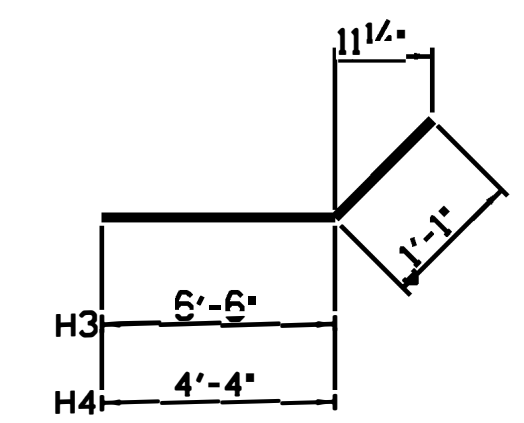
PLAN



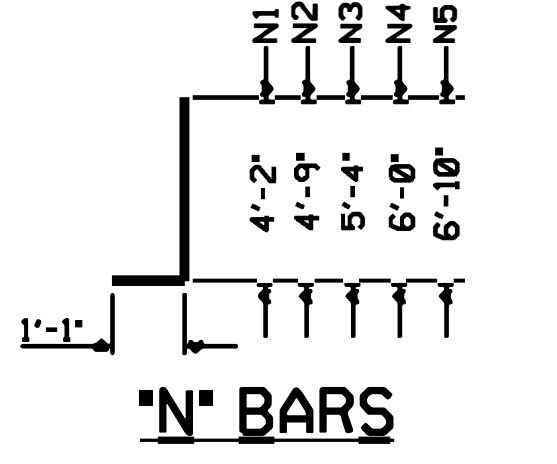
ELEVATION



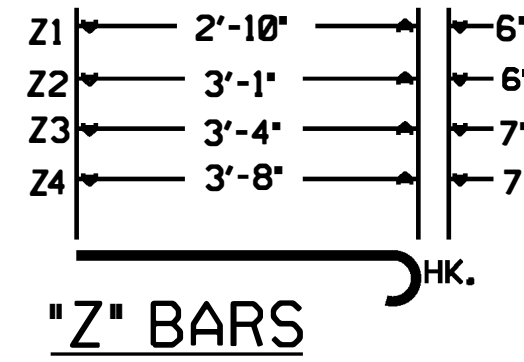
"H" BARS



"H" BARS

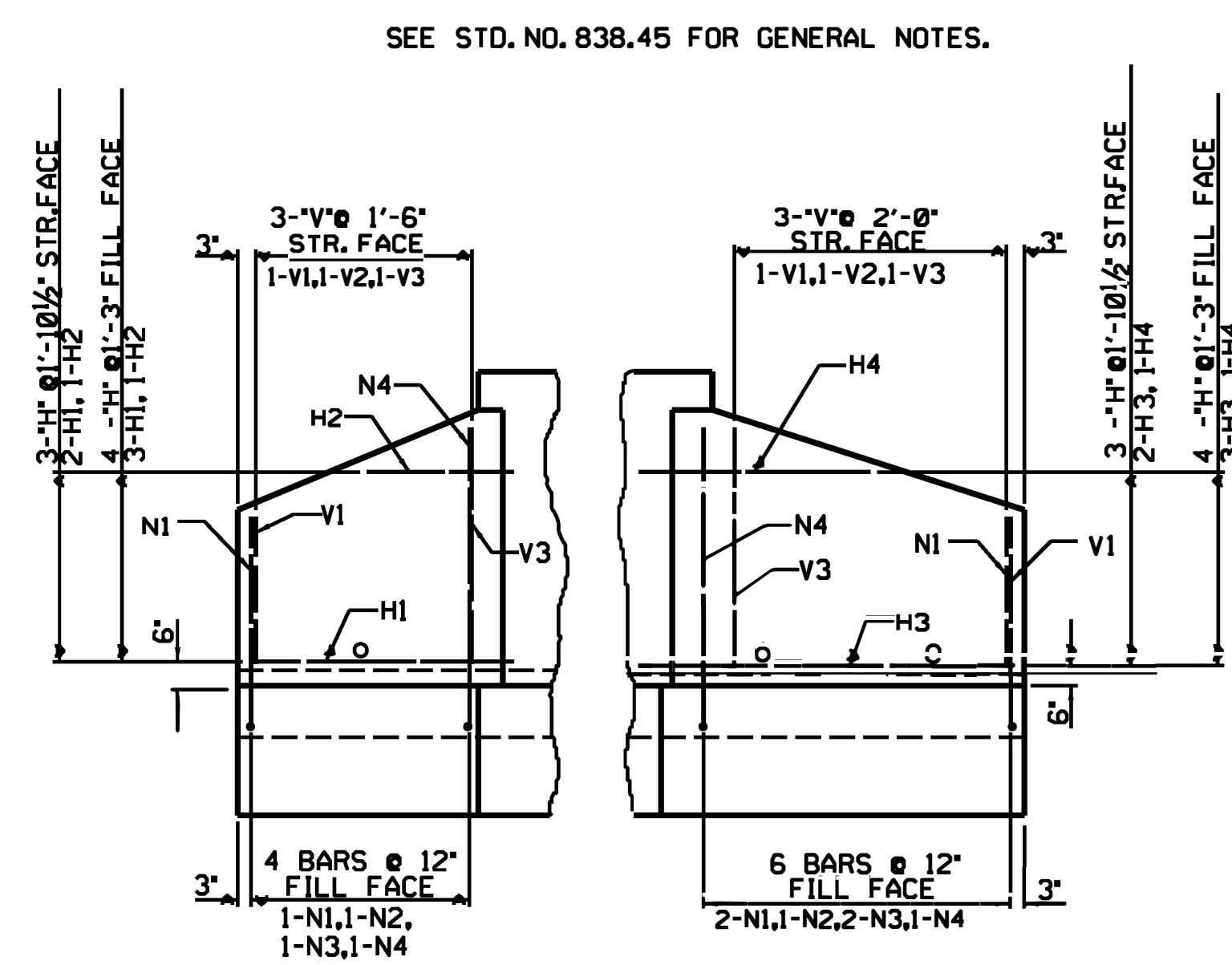


"N" BARS



"Z" BARS

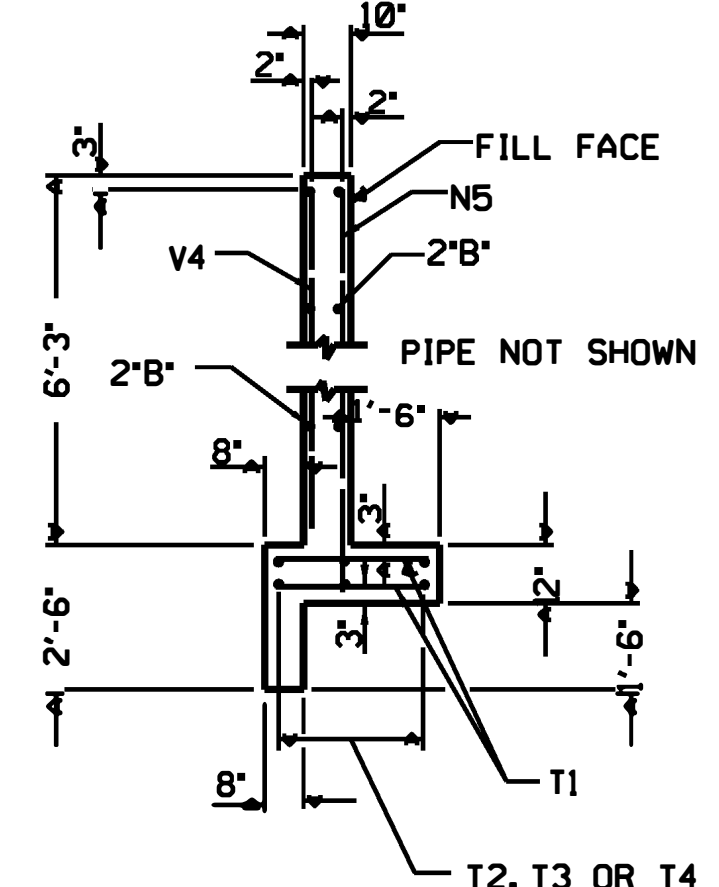
"H", "N", & "Z" BAR DIMENSIONS ARE OUT TO OUT.



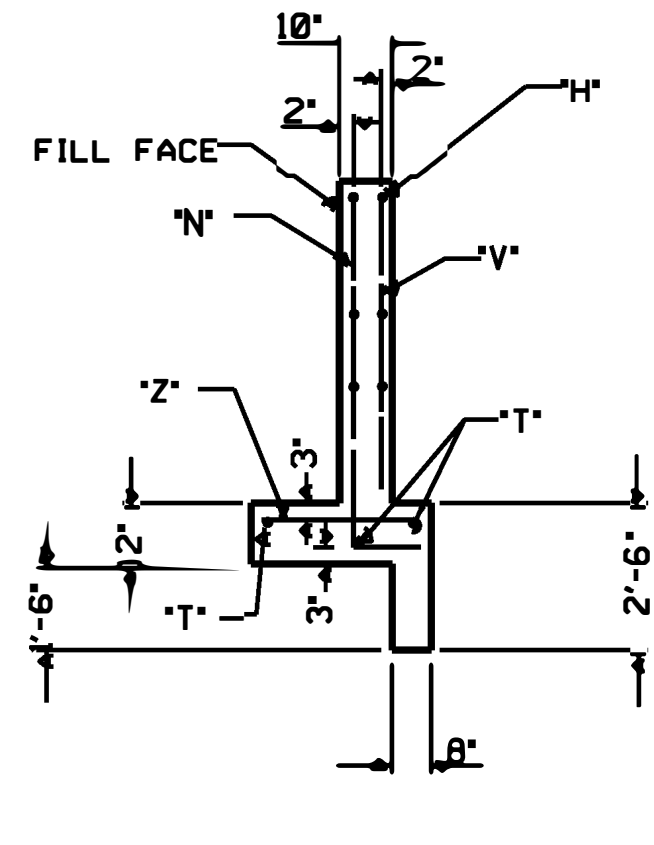
WING ELEVATION

SEE STD. NO. 838.45 FOR GENERAL NOTES.

BILL OF MATERIAL FOR ENDWALLS							
REINF. STEEL			2 - PIPES		3 - PIPES		
BAR	SIZE	LENGTH	NO.	WEIGHT	NO.	WEIGHT	
Z1	#4	3'-4"	3	7	3	7	
Z2	#4	3'-7"	2	5	2	5	
Z3	#5	3'-11"	3	12	3	12	
Z4	#5	4'-3"	3	13	3	13	
N1	#4	5'-3"	3	11	3	11	
N2	#4	5'-10"	2	8	2	8	
N3	#4	6'-5"	3	13	3	13	
N4	#5	7'-1"	2	15	2	15	
N5	#4	7'-11"	10	53	14	74	
V1	#4	3'-0"	2	4	2	4	
V2	#4	3'-10"	2	5	2	5	
V3	#4	4'-8"	2	6	2	6	
V4	#4	5'-9"	5	19	7	27	
H1	#4	4'-6"	5	15	5	15	
H2	#4	3'-0"	2	4	2	4	
H3	#4	7'-7"	5	25	5	25	
H4	#4	5'-5"	2	7	2	7	
G2	#7	18'-9"	2	77	-	-	
G3	#7	27'-8"	-	-	2	113	
T1	#4	2'-6"	76	127	112	187	
T3	#4	21'-9"	6	87	-	-	
T4	#4	16'-0"	-	-	12	128	
T5	#4	4'-2"	3	8	3	8	
T6	#4	6'-0"	3	12	3	12	
B1	#4	4'-9"	10	32	14	44	
B2	#4	6'-0"	6	24	10	40	
REINF. STEEL LBS.			589		783		
CONC./C.M. CU. YDS.			8.3		10.7		
CONC./R.C. CU. YDS.			7.8		10.0		



SECTION - BB



SECTION - AA

STATE OF NORTH CAROLINA DEPT. OF TRANSPORTATION DIVISION OF HIGHWAYS RALEIGH, N.C.

ENGLISH DETAIL DRAWING FOR REINFORCED CONCRETE ENDWALL FOR DOUBLE & TRIPLE 54" PIPE 60° OR 120° SKEW

SHEET 1 OF 838D24

SYSTEMS TIME \$\$\$\$\$\$ USER NAME \$\$\$\$\$\$



CONTRACT STANDARDS AND DEVELOPMENT UNIT
 Office 919-707-6900 FAX 919-250-4119
 SEE PLATE FOR TITLE

ORIGINAL BY: _____ DATE: _____
 MODIFIED BY: _____ DATE: _____
 CHECKED BY: _____ DATE: _____
 FILE SPEC: _____