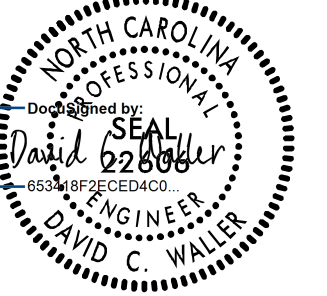
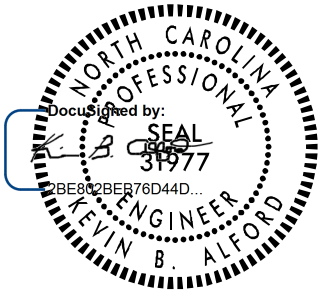
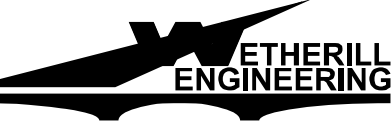
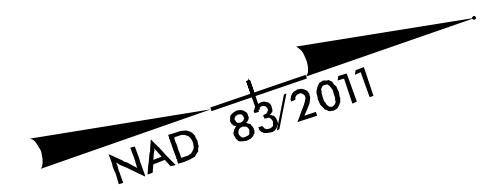


8/17/99

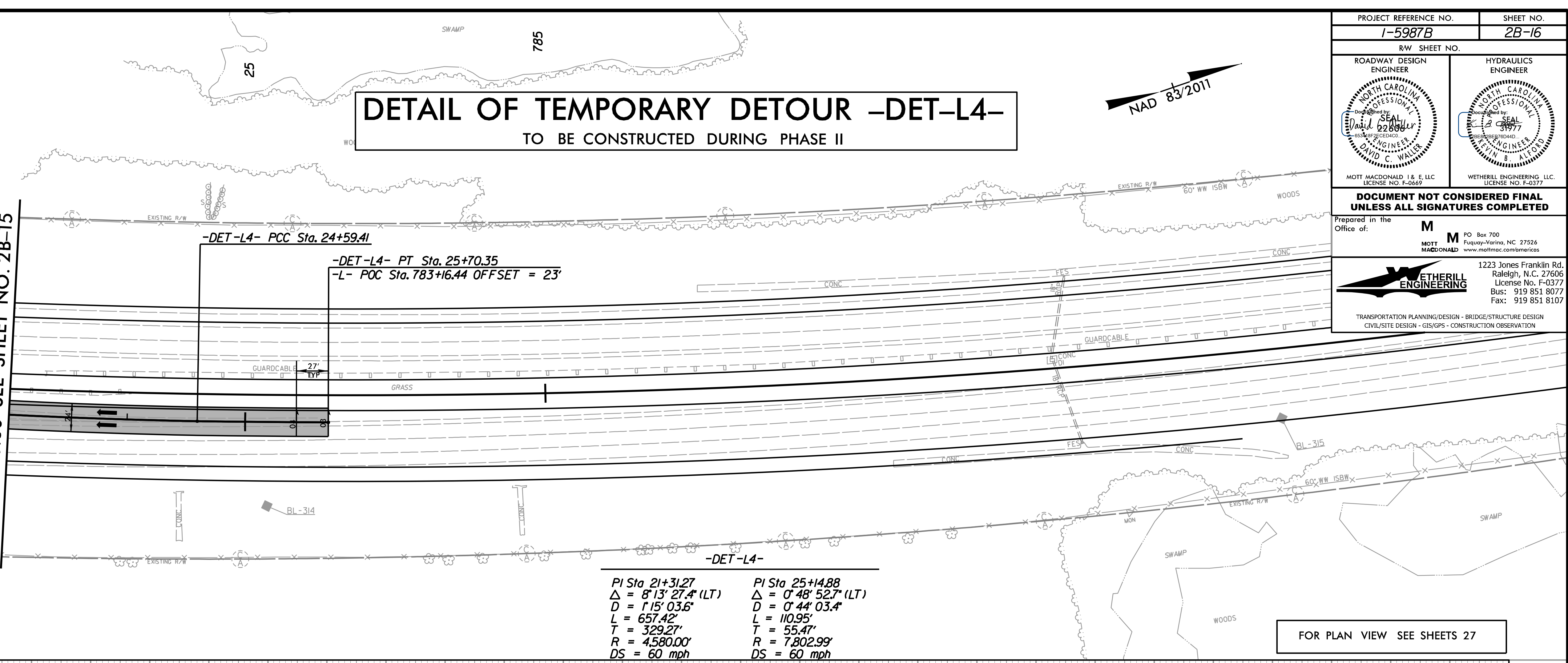
PROJECT REFERENCE NO. 1-5987B	SHEET NO. 2B-16
RW SHEET NO.	
ROADWAY DESIGN ENGINEER 	HYDRAULICS ENGINEER 
MOTT MACDONALD I & E, LLC LICENSE NO. F-0669	WETHERILL ENGINEERING, LLC LICENSE NO. F-0377
DOCUMENT NOT CONSIDERED FINAL UNLESS ALL SIGNATURES COMPLETED	
Prepared in the Office of:	M PO Box 700 Fuquay-Varina, NC 27526 www.motmac.com/america
	1223 Jones Franklin Rd. Raleigh, N.C. 27606 License No. F-0377 Bus: 919 851 8077 Fax: 919 851 8107
TRANSPORTATION PLANNING/DESIGN - BRIDGE/STRUCTURE DESIGN CIVIL/SITE DESIGN - GIS/GPS - CONSTRUCTION OBSERVATION	

DETAIL OF TEMPORARY DETOUR -DET-L4-

TO BE CONSTRUCTED DURING PHASE II

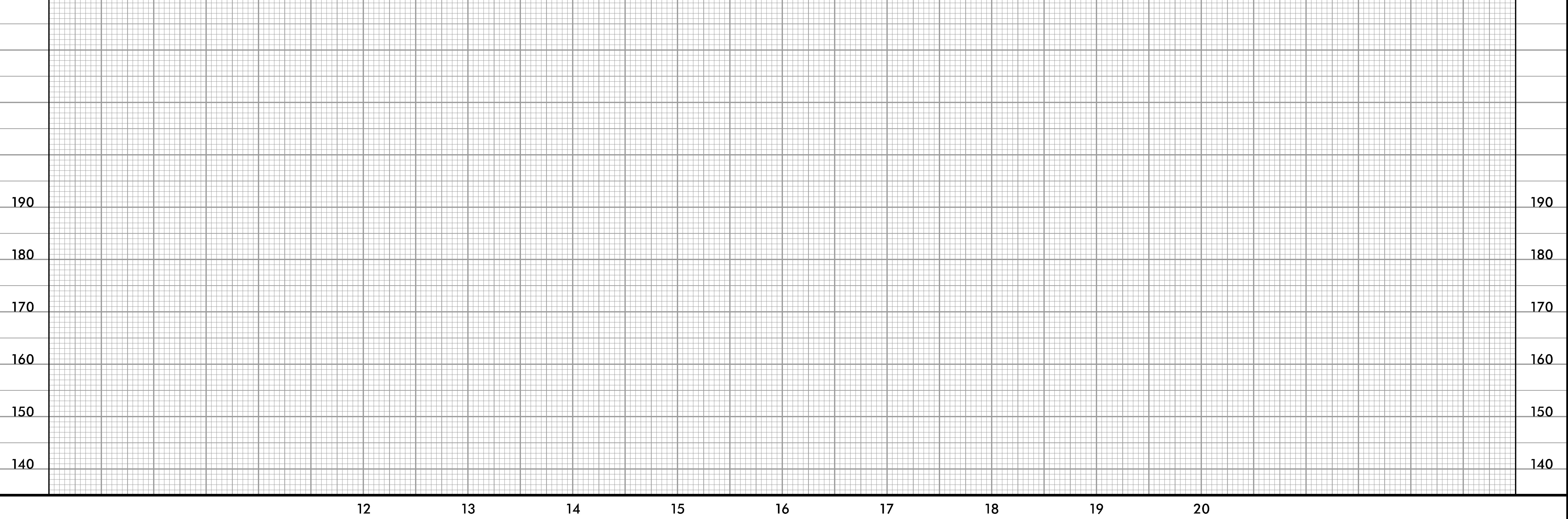


MATCHLINE -DET-L4-
STA. 23+00.00 SEE SHEET NO. 2B-15



-DET-L4-	
PI Sta 21+31.27	PI Sta 25+14.88
$\Delta = 8^{\circ}13'27.4''$ (LT)	$\Delta = 0^{\circ}48'52.7''$ (LT)
$D = 1^{\circ}15'03.6''$	$D = 0^{\circ}44'03.4''$
$L = 657.42'$	$L = 110.95'$
$T = 329.27'$	$T = 55.47'$
$R = 4,580.00'$	$R = 7,802.99'$
$DS = 60$ mph	$DS = 60$ mph

FOR PLAN VIEW SEE SHEETS 27



4/28/2002
C:\Program Files\AutoCAD\Projects\15987b_rdl_rsh_02B-16.dgn