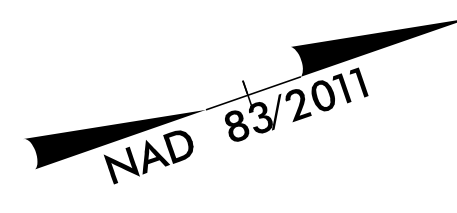
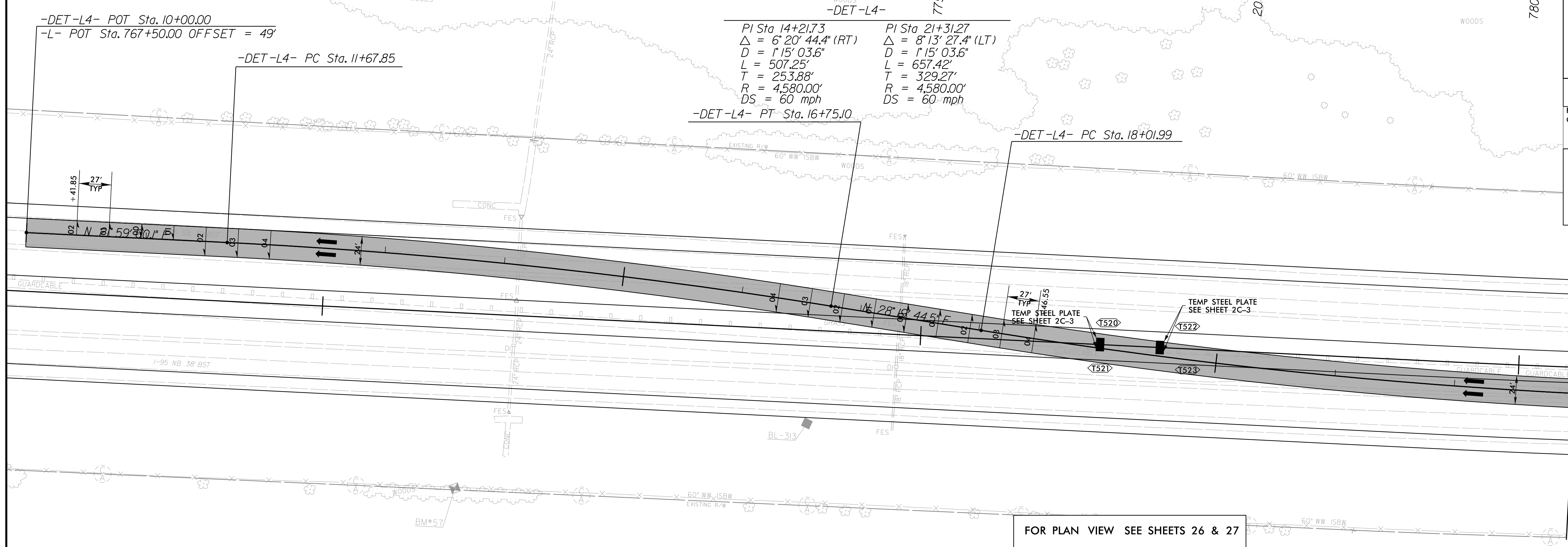


8.17.99

DETAIL OF TEMPORARY DETOUR -DET-L4- TO BE CONSTRUCTED DURING PHASE II



PROJECT REFERENCE NO. 1-5987B	SHEET NO. 2B-15
RW SHEET NO.	
ROADWAY DESIGN ENGINEER DAVID C. WETHERILL Professional Seal License No. F-0377	HYDRAULICS ENGINEER KEVIN S. FORD Professional Seal License No. F-0377
MOTT MACDONALD I & E, LLC License No. F-0669	
WETHERILL ENGINEERING, LLC License No. F-0377	
DOCUMENT NOT CONSIDERED FINAL UNLESS ALL SIGNATURES COMPLETED	
Prepared in the Office of:	M MOTT MACDONALD PO Box 700 Fuquay-Varina, NC 27526 www.mottmac.com/americas
TRANSPORTATION PLANNING/DESIGN - BRIDGE/STRUCTURE DESIGN CIVIL/SITE DESIGN - GIS/GPS - CONSTRUCTION OBSERVATION	



MATCHLINE -DET-4-
STA. 23+00.00 SEE SHEET
NO. 2B-16

-DET-L4-

