

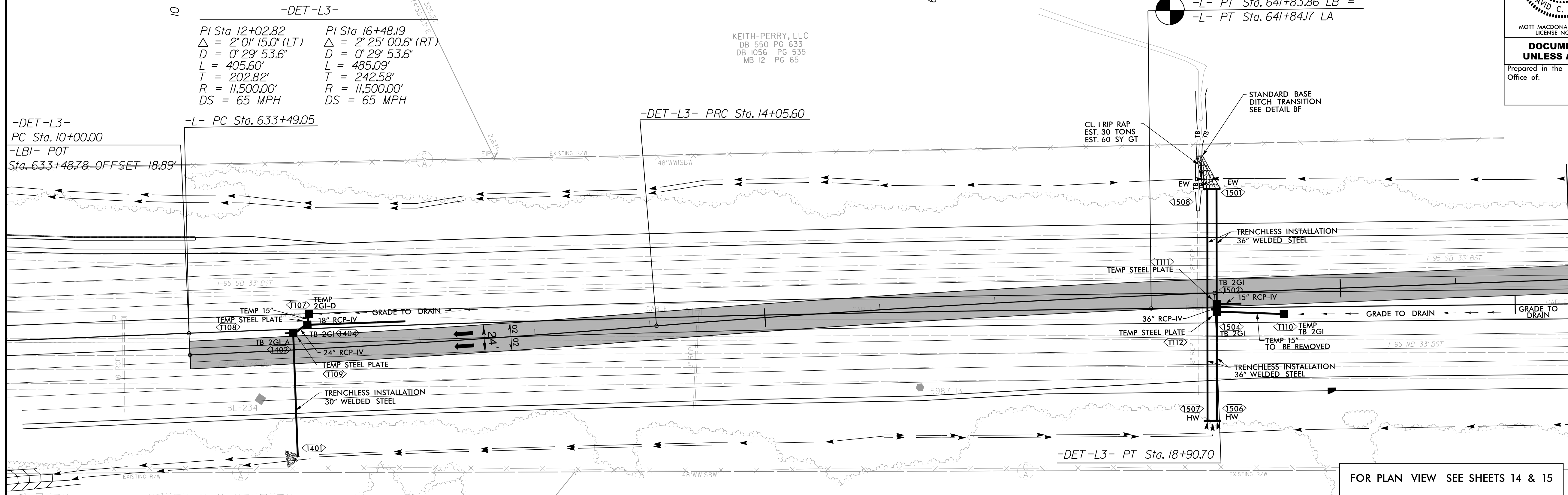
8/17/99
4/15/2022
C:\Users\martin_r\OneDrive\Documents\Projects\5987b_r\rdw\psh_02B-7.dgn

DEIRDRE E. MARTIN
AND
REBECCA MARTIN
DB 1989 PG 638

DETAIL OF TEMPORARY DETOUR -DET-L3- TO BE CONSTRUCTED DURING PHASE II.2

20
NAD 83/2011

PROJECT REFERENCE NO. 1-5987B	SHEET NO. 2B-7
RW SHEET NO.	
ROADWAY DESIGN ENGINEER	HYDRAULICS ENGINEER
MOTT MACDONALD I & E LLC LICENSE NO. F-0669	MOTT MACDONALD I & E LLC LICENSE NO. F-0669
DOCUMENT NOT CONSIDERED FINAL UNLESS ALL SIGNATURES COMPLETED	
Prepared in the Office of:	M M MOTT MACDONALD PO Box 700 Fuquay-Varina, NC 27526 www.mottmac.com/americas



MATCHLINE -DET-L3-
STA. 22 + 00.00 SEE SHEET NO. 2B-8

