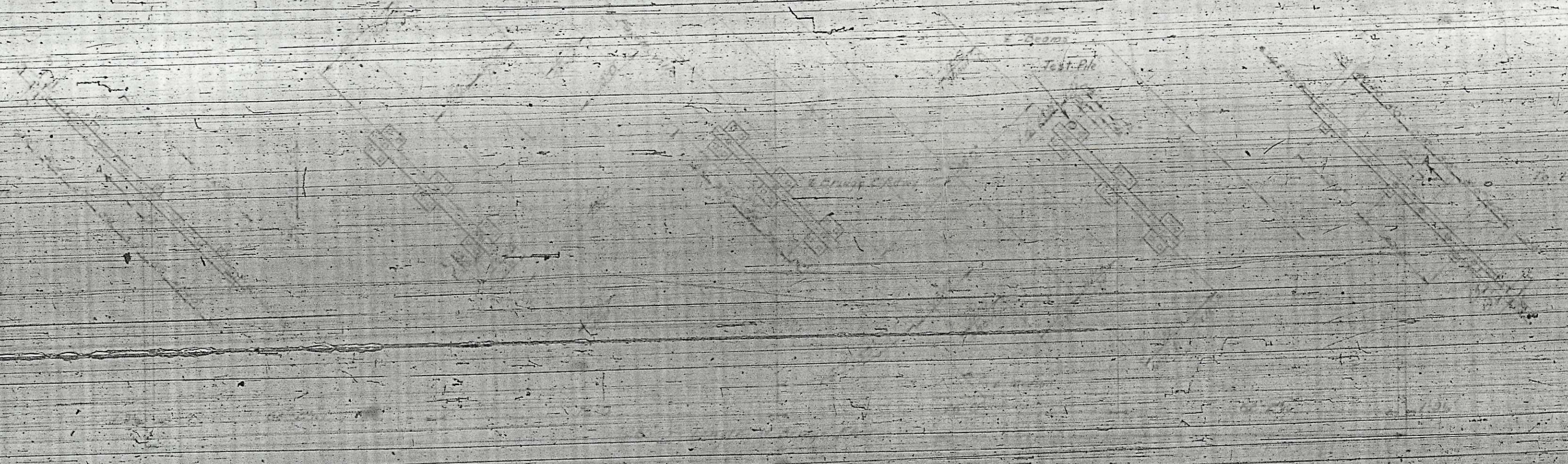


ELEVATION ALONG E
(BENTS - SEE PLAN - A-A)



Notes:

Assumed Live Load: 7000 lbs. per sq. ft. (see sheet 31N)

For other design data and general notes see sheet 31N.

All exposed concrete shall be given a clean finish in accordance with the Specifications.

The contractor will be required to drive test piles 10' in excess of the 15' test piles indicated in sheet 31N. These test piles shall be placed at a depth of 10' from the center line of the bridge. The contractor shall be required to furnish the test piles and to furnish the test piles to the following minimum lengths: Bent No. 1, 20 ft. each; Bent No. 2, 25 ft. each; Bent No. 3, 25 ft. each. The contractor shall be required to furnish the test piles to the following minimum lengths: Bent No. 1, 20 ft. each; Bent No. 2, 25 ft. each; Bent No. 3, 25 ft. each. The contractor shall be required to furnish the test piles to the following minimum lengths: Bent No. 1, 20 ft. each; Bent No. 2, 25 ft. each; Bent No. 3, 25 ft. each.

Unless noted, all elevations shall be measured from the original ground line. Elevation on U.S. 501 will be tested over a proposed datum. See Special Provisions.

LOCATION SKETCH

Brig # 100

PROJECT NO. 519,962

ROAD ON TOWN OF WILKINSON COUNTY

STATION: 7+81.50 to 7+91.50

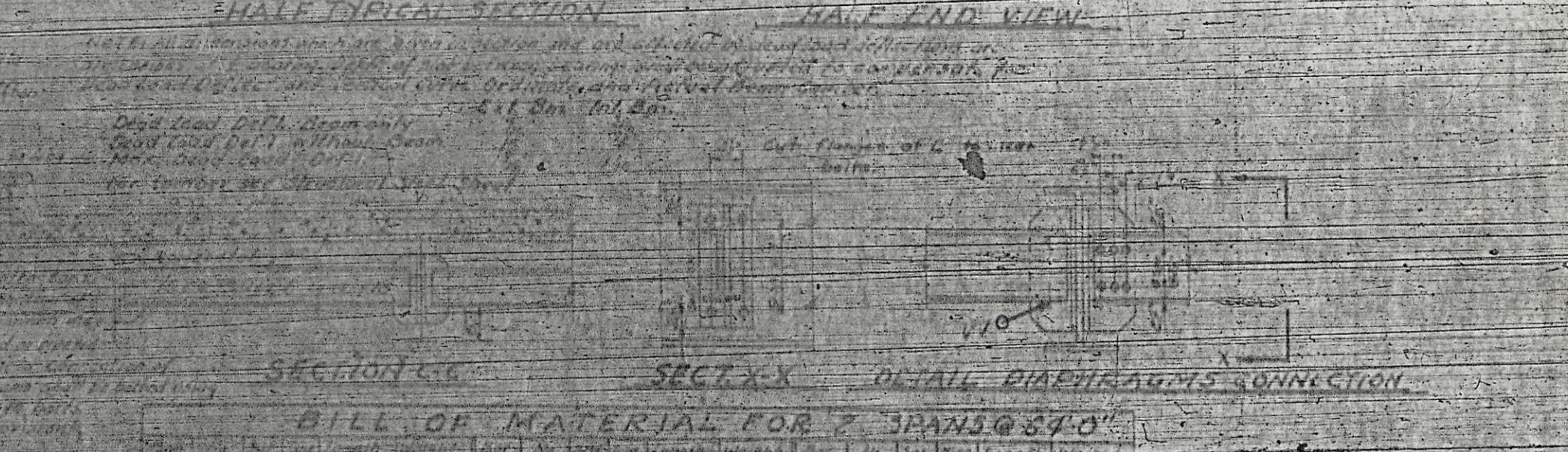
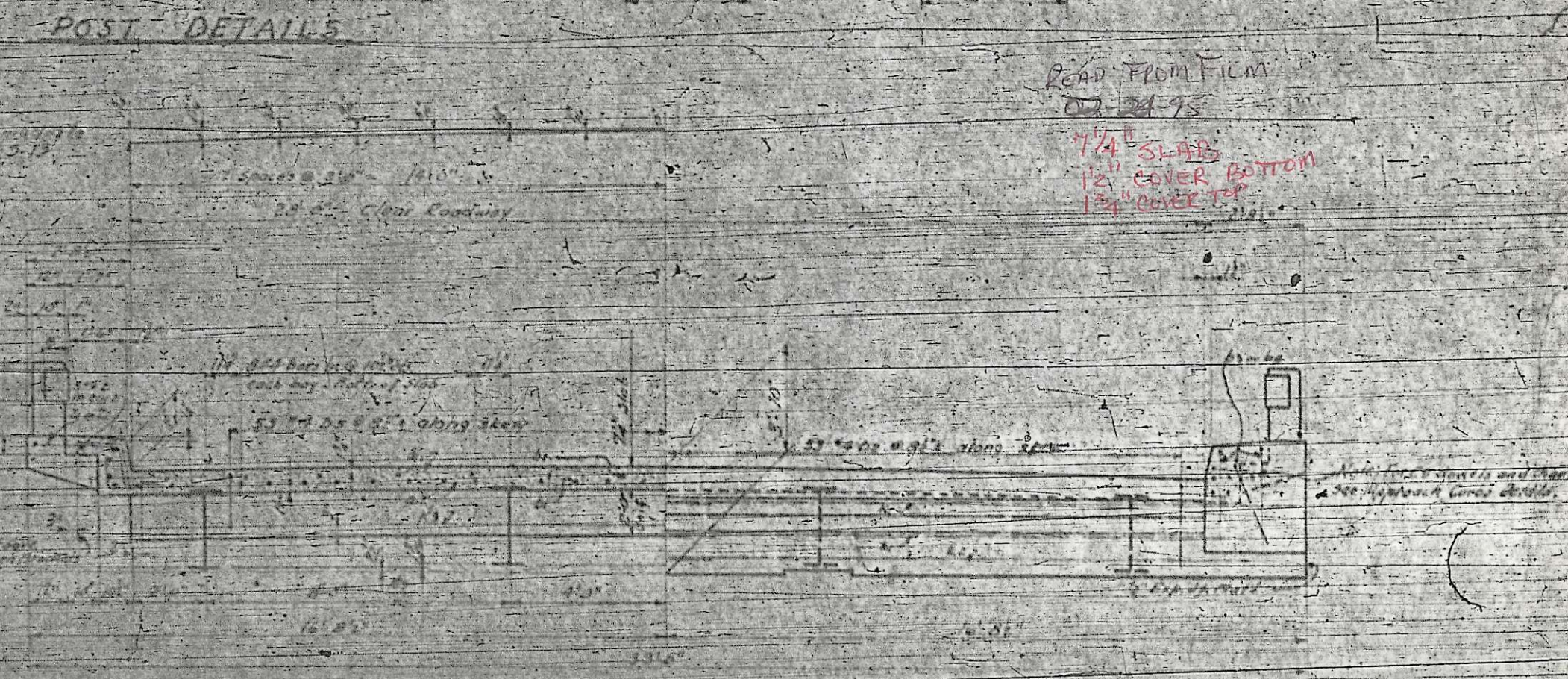
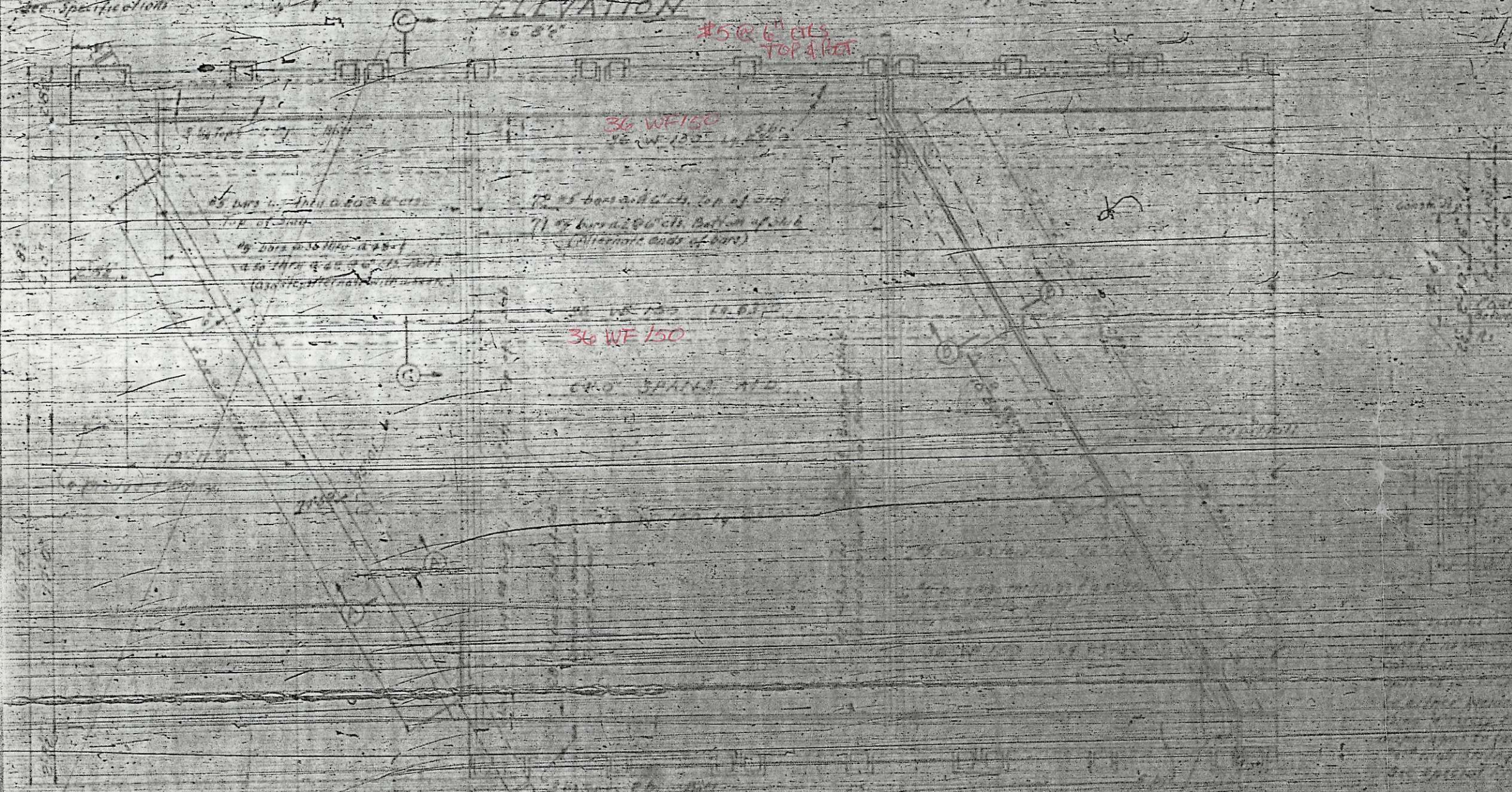
STATE OF NORTH CAROLINA
STATE HIGHWAY COMMISSION

GENERAL DRAWING
FOR BRIDGE ON U.S. 501
BETWEEN
LUNDEN & PATTEVILLE
DEC. 1950

W. B. ...
W. B. ...

DATE	BY
DATE	BY

NS Span 1, 2, 3, 4, 5, 6, 7, 8, 9, 10, 11, 12, 13, 14, 15, 16, 17, 18, 19, 20, 21, 22, 23, 24, 25, 26, 27, 28, 29, 30, 31, 32, 33, 34, 35, 36, 37, 38, 39, 40, 41, 42, 43, 44, 45, 46, 47, 48, 49, 50, 51, 52, 53, 54, 55, 56, 57, 58, 59, 60, 61, 62, 63, 64, 65, 66, 67, 68, 69, 70, 71, 72, 73, 74, 75, 76, 77, 78, 79, 80, 81, 82, 83, 84, 85, 86, 87, 88, 89, 90, 91, 92, 93, 94, 95, 96, 97, 98, 99, 100



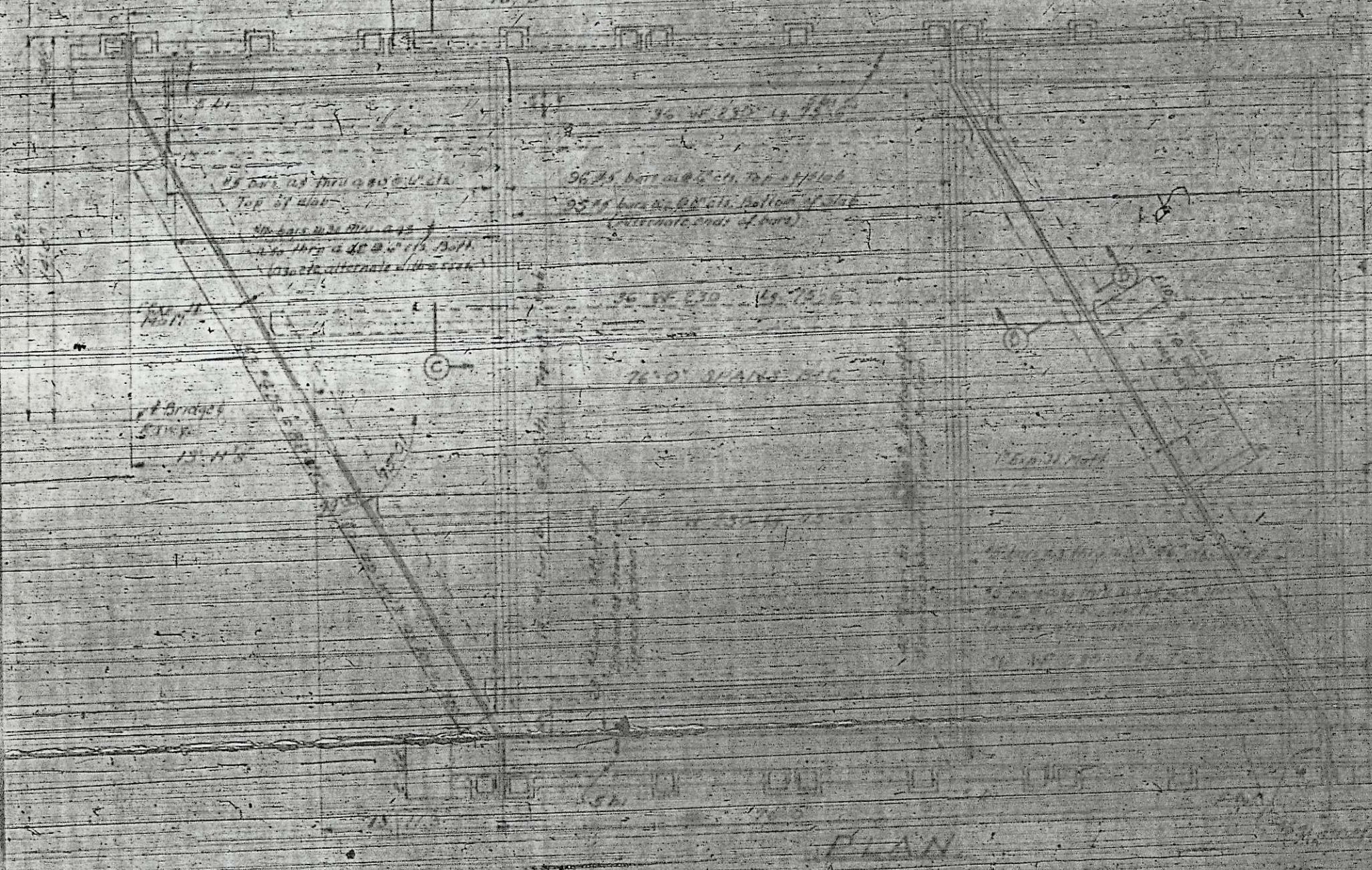
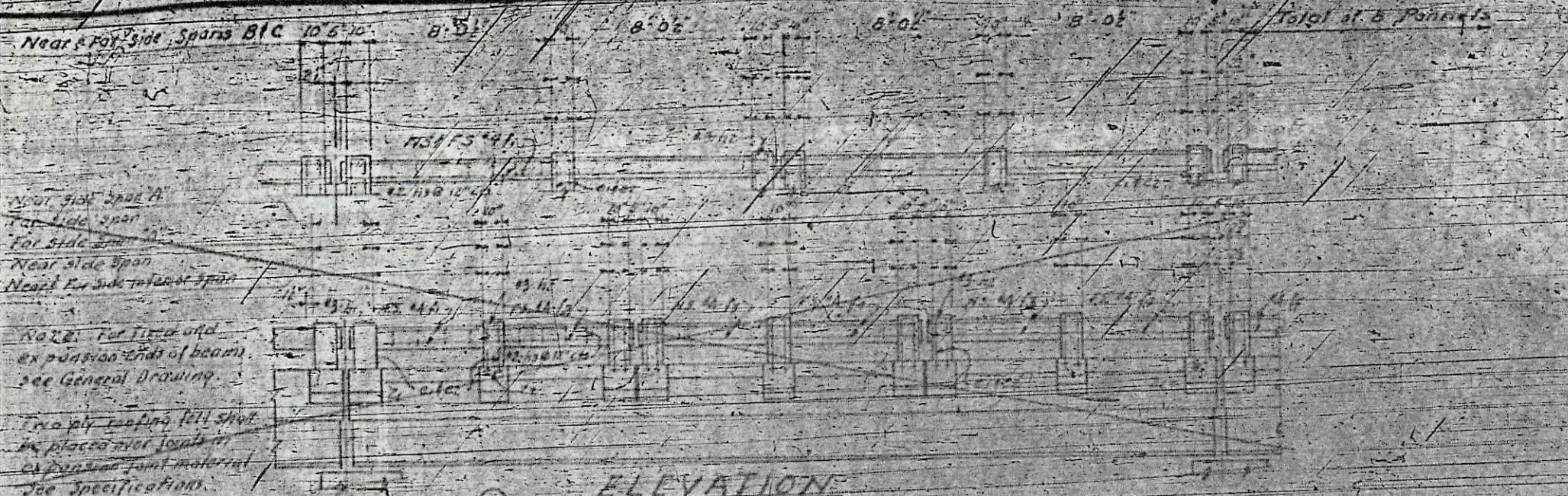
BILL OF MATERIAL FOR 2 SPANS @ 40'

ITEM NO.	DESCRIPTION	QUANTITY	UNIT	PRICE	TOTAL
1	36 WF 150	100	LB	0.15	15.00
2	40 SPANS AT 20'	40	SPAN	1.00	40.00
3
4
5
6
7
8
9
10
11
12
13
14
15
16
17
18
19
20
21
22
23
24
25
26
27
28
29
30
31
32
33
34
35
36
37
38
39
40
41
42
43
44
45
46
47
48
49
50

PROJECT NO. 873962
 ROBERTSON COUNTY
 STATION: 798150.274
 SPANS 40'
 STATE HIGHWAY COMMISSION
 STANDARD I-BEAM SUPERSTRUCTURE WITH R.C. FLOOR & RAIL
 28 ROADWAY APPROACH SKEW
 MAY 1957

SPECIAL APPROVED BY: [Signature]
 STANDARD APPROVED BY: [Signature]

Refer to Design Data and Details of N.C. Section 5-N



Note: All dimensions are in feet and inches and are effective to the face of the member unless otherwise specified.
Dead Load Defl. Beam only.
Dead Load Defl. without Beams.
Max. Dead Load Defl.
For complete specifications, see Structural Steel Sheet.



BILL OF MATERIAL FOR 2 SPANS 76'-0"

NO.	DESCRIPTION	QTY	UNIT	PRICE	TOTAL
1	1" x 12" x 22' Deck Slab	120	sq ft	1.20	144.00
2	2" x 12" x 22' Deck Slab	120	sq ft	2.40	288.00
3	3" x 12" x 22' Deck Slab	120	sq ft	3.60	432.00
4	4" x 12" x 22' Deck Slab	120	sq ft	4.80	576.00
5	5" x 12" x 22' Deck Slab	120	sq ft	6.00	720.00
6	6" x 12" x 22' Deck Slab	120	sq ft	7.20	864.00
7	7" x 12" x 22' Deck Slab	120	sq ft	8.40	1008.00
8	8" x 12" x 22' Deck Slab	120	sq ft	9.60	1152.00
9	9" x 12" x 22' Deck Slab	120	sq ft	10.80	1296.00
10	10" x 12" x 22' Deck Slab	120	sq ft	12.00	1440.00
11	11" x 12" x 22' Deck Slab	120	sq ft	13.20	1584.00
12	12" x 12" x 22' Deck Slab	120	sq ft	14.40	1728.00
13	13" x 12" x 22' Deck Slab	120	sq ft	15.60	1872.00
14	14" x 12" x 22' Deck Slab	120	sq ft	16.80	2016.00
15	15" x 12" x 22' Deck Slab	120	sq ft	18.00	2160.00
16	16" x 12" x 22' Deck Slab	120	sq ft	19.20	2304.00
17	17" x 12" x 22' Deck Slab	120	sq ft	20.40	2448.00
18	18" x 12" x 22' Deck Slab	120	sq ft	21.60	2592.00
19	19" x 12" x 22' Deck Slab	120	sq ft	22.80	2736.00
20	20" x 12" x 22' Deck Slab	120	sq ft	24.00	2880.00
21	21" x 12" x 22' Deck Slab	120	sq ft	25.20	3024.00
22	22" x 12" x 22' Deck Slab	120	sq ft	26.40	3168.00
23	23" x 12" x 22' Deck Slab	120	sq ft	27.60	3312.00
24	24" x 12" x 22' Deck Slab	120	sq ft	28.80	3456.00
25	25" x 12" x 22' Deck Slab	120	sq ft	30.00	3600.00
26	26" x 12" x 22' Deck Slab	120	sq ft	31.20	3744.00
27	27" x 12" x 22' Deck Slab	120	sq ft	32.40	3888.00
28	28" x 12" x 22' Deck Slab	120	sq ft	33.60	4032.00
29	29" x 12" x 22' Deck Slab	120	sq ft	34.80	4176.00
30	30" x 12" x 22' Deck Slab	120	sq ft	36.00	4320.00
31	31" x 12" x 22' Deck Slab	120	sq ft	37.20	4464.00
32	32" x 12" x 22' Deck Slab	120	sq ft	38.40	4608.00
33	33" x 12" x 22' Deck Slab	120	sq ft	39.60	4752.00
34	34" x 12" x 22' Deck Slab	120	sq ft	40.80	4896.00
35	35" x 12" x 22' Deck Slab	120	sq ft	42.00	5040.00
36	36" x 12" x 22' Deck Slab	120	sq ft	43.20	5184.00
37	37" x 12" x 22' Deck Slab	120	sq ft	44.40	5328.00
38	38" x 12" x 22' Deck Slab	120	sq ft	45.60	5472.00
39	39" x 12" x 22' Deck Slab	120	sq ft	46.80	5616.00
40	40" x 12" x 22' Deck Slab	120	sq ft	48.00	5760.00
41	41" x 12" x 22' Deck Slab	120	sq ft	49.20	5904.00
42	42" x 12" x 22' Deck Slab	120	sq ft	50.40	6048.00
43	43" x 12" x 22' Deck Slab	120	sq ft	51.60	6192.00
44	44" x 12" x 22' Deck Slab	120	sq ft	52.80	6336.00
45	45" x 12" x 22' Deck Slab	120	sq ft	54.00	6480.00
46	46" x 12" x 22' Deck Slab	120	sq ft	55.20	6624.00
47	47" x 12" x 22' Deck Slab	120	sq ft	56.40	6768.00
48	48" x 12" x 22' Deck Slab	120	sq ft	57.60	6912.00
49	49" x 12" x 22' Deck Slab	120	sq ft	58.80	7056.00
50	50" x 12" x 22' Deck Slab	120	sq ft	60.00	7200.00
51	51" x 12" x 22' Deck Slab	120	sq ft	61.20	7344.00
52	52" x 12" x 22' Deck Slab	120	sq ft	62.40	7488.00
53	53" x 12" x 22' Deck Slab	120	sq ft	63.60	7632.00
54	54" x 12" x 22' Deck Slab	120	sq ft	64.80	7776.00
55	55" x 12" x 22' Deck Slab	120	sq ft	66.00	7920.00
56	56" x 12" x 22' Deck Slab	120	sq ft	67.20	8064.00
57	57" x 12" x 22' Deck Slab	120	sq ft	68.40	8208.00
58	58" x 12" x 22' Deck Slab	120	sq ft	69.60	8352.00
59	59" x 12" x 22' Deck Slab	120	sq ft	70.80	8496.00
60	60" x 12" x 22' Deck Slab	120	sq ft	72.00	8640.00

PROJECT NO. 2/196
CUMBERLAND COUNTY
STATION 793+30-276
SPANS B/C
STATE HIGHWAY COMMISSION
STANDARD I-BEAM SUPERSTRUCTURE WITH R.C. FLOOR & RAIL 28' ROADWAY CLEAR SKEW PIAT 1452

SPECIAL	DATE	BY
STANDARD	DATE	BY

BAR TYPES

PLAN SHOWING FILL PLATES

STRUCTURAL STEEL PLAN

BOTTOM FLANGE DETAIL



PROJECT NO. 8/59

COUNTY

STATION

STATE OF NORTH CAROLINA
STATE HIGHWAY COMMISSION

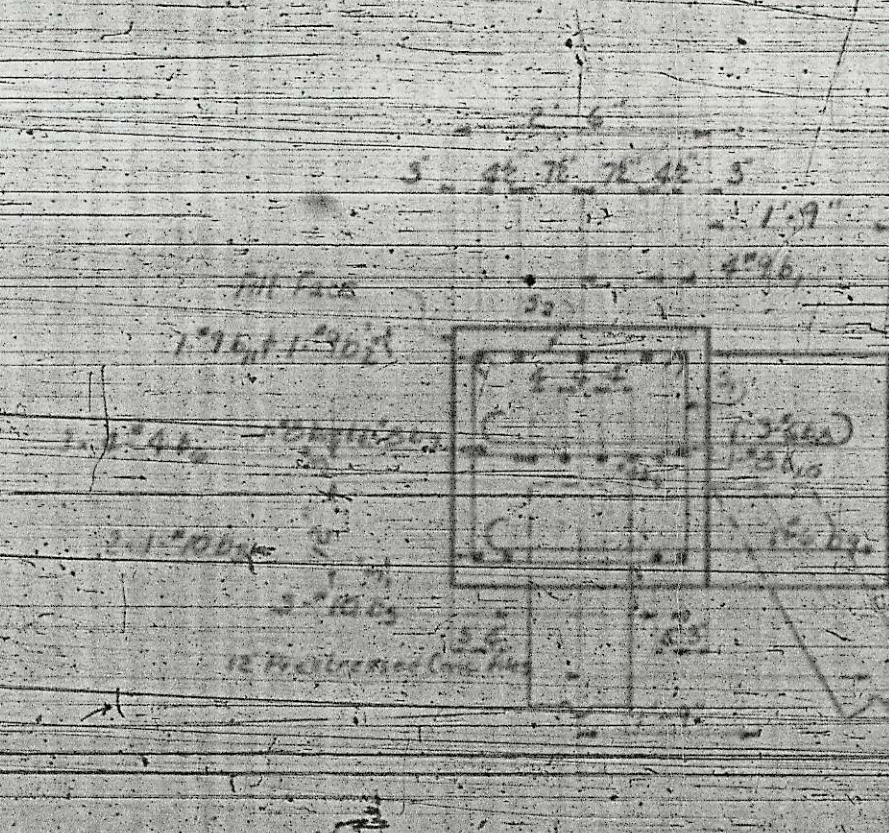
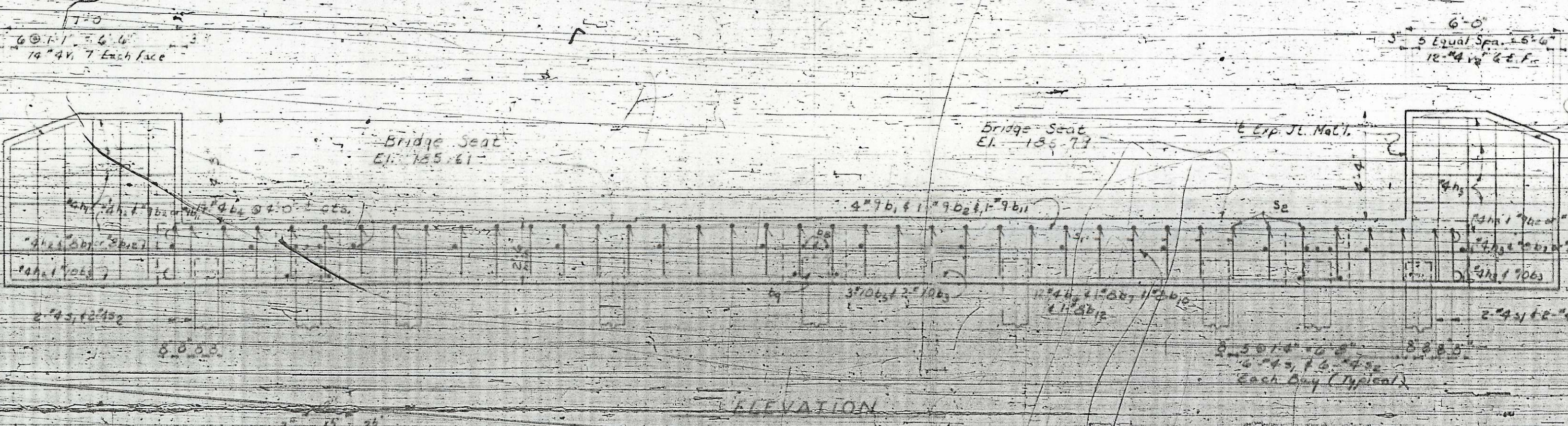
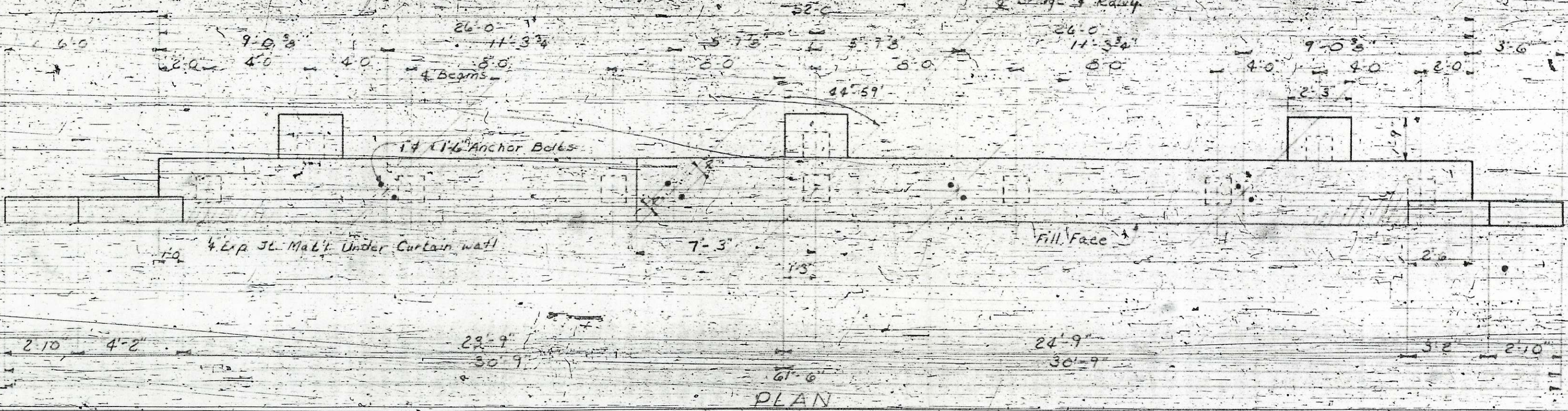
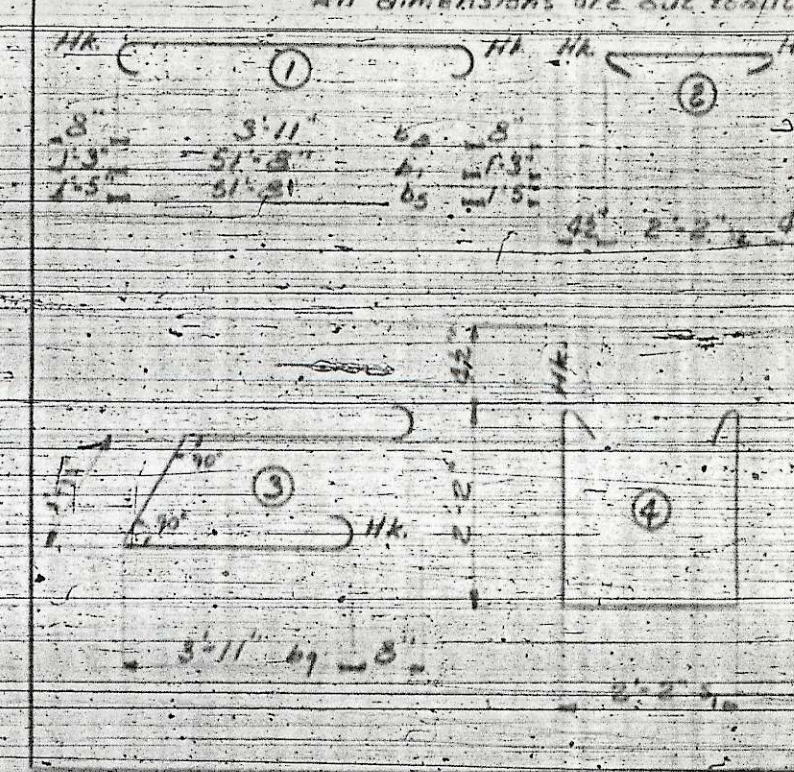
BILL OF MATERIAL

One Shown & Require

Bar No	Size	Type	Length	Qty
b1	4"	"9"	54'-2"	73
b2	1"	"9"	30'-0"	16
b3	2"	"10"	32'-3"	27
b4	14"	"4"	2'-0"	2
b5	3"	"10"	54'-6"	70
b6	12"	"4"	36'-1"	14
b7	1"	"8"	36'-0"	8
b8	9"	"6"	5'-3"	7
b9	3"	"6"	11'-1"	5
b10	1"	"8"	51'-8"	13
b11	1"	"9"	33'-11"	11
b12	1"	"8"	33'-8"	9
b1	8"	"4"	6'-8"	8
b2	3"	"4"	7'-1"	1
b3	11"	"4"	5'-8"	4
b4	40"	"4"	7'-3"	1
b5	40"	"4"	2'-11"	7
b6	14"	"4"	6'-5"	6
b7	12"	"4"	6'-8"	5

Reinforcing Steel - lbs. 3801
 Class A Concrete - cu. yd. 16.1
 Prestressed Concrete - No. 10
 End Bent No. 1 10
 End Bent No. 2 10
 *Concrete displaced by fill has been deducted.

BAR DETAILS



PROJECT NO. 513762
 ROBESON - CUMBERLAND COUNTY
 STATION 715+50.27

STATE OF NORTH CAROLINA
 STATE HIGHWAY COMMISSION
 RALEIGH
 END BENT NO. 1 & 2

DECEMBER 1958

REVISIONS						HEET NO.
NO.	BY	DATE	NO.	BY	DATE	2/16
1			1			2/16

DESIGNED BY
 DRAWN BY
 CHECKED BY
 DATE
 DATE
 DATE



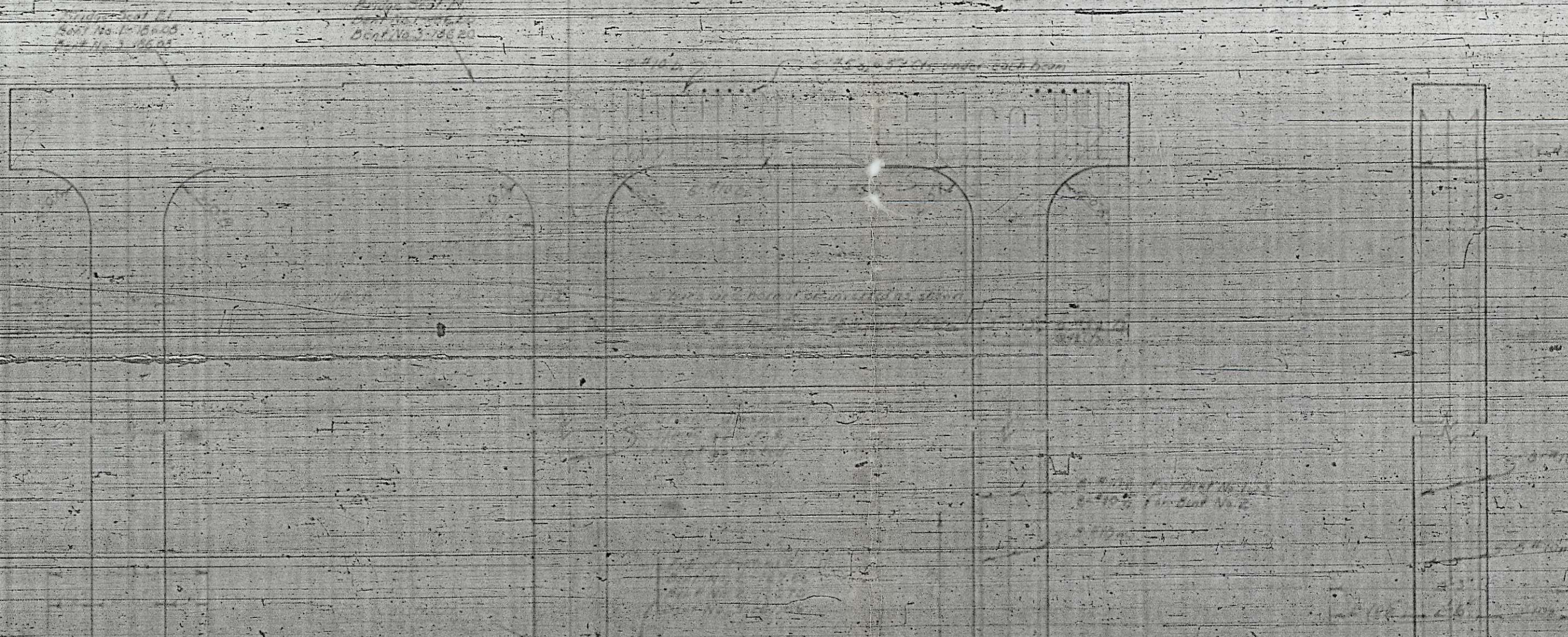
BILL OF MATERIAL
FOR ONE BENT - 3 REQD

BAR	NO.	SIZE	TYPE	LENGTH	WEIGHT
1	7	#0	1	700	120
2	6	#10	5/8	318	318
3	10	#5	1	540	26
4	24	#10	2	120	271
5	24	#10	2	120	271

PLAN
(Cover Bent No. 3)

SECTION THRU CAP

Bent No. 1 of 3
Bent No. 2



ELEVATION

END ELEVATION
PART VII

PROJECT NO. 13962

ROPERSON, W. W. & COMPANY

STATION: 796.55

STATE OF NORTH CAROLINA
STATE HIGHWAY COMMISSION

SUBSTRUCTURE,
BENT NO. 1, 2 & 3

DECEMBER 1954