



NC DEPARTMENT OF TRANSPORTATION ATTENTION:
 DIVISION OF HIGHWAYS
 STRUCTURE MANAGEMENT UNIT

Structure Safety Report

Routine Element Inspection

INSPECTION DATE: 04/25/2018

DIVISION: 6 COUNTY: ROBESON STRUCTURE NUMBER: 770510 FREQUENCY: 24 MONTHS

FACILITY CARRIED: US301 NBL MILE POST: _____

LOCATION: 0.5 MI. N. JCT. SR1005

FEATURE INTERSECTED: I-95

LATITUDE: 34° 40' 12.3" LONGITUDE: 79° 0' 21.7"

SUPERSTRUCTURE: RC DECK ON PRESTRESSED CONCRETE MODIFIED BULB TEES (CONTINUOUS), SIP FORMS, AF

SUBSTRUCTURE: END BENTS:RC CAPS ON STEEL PILES; WITH MSE WALLS, INT. BENT:3 COLUMN, RC POST & BEAM

SPANS: 2 SPANS. SEE SPAN PROFILE SHEET FOR SPAN DETAILS

FRACTURE CRITICAL TEMPORARY SHORING SCOUR CRITICAL SCOUR PLAN OF ACTION

GRADES: DECK 8 SUPERSTRUCTURE 8 SUBSTRUCTURE 8 CULVERT N

POSTED SV: Not Posted POSTED TTST: Not Posted

OTHER SIGNS PRESENT: NONE



LOOKING NORTH

Sign noticed issued for	Number Required
<u>NO</u> WEIGHT LIMIT	<u>0</u>
<u>NO</u> DELINEATORS	<u>0</u>
<u>NO</u> NARROW BRIDGE	<u>0</u>
<u>NO</u> ONE LANE BRIDGE	<u>0</u>
<u>NO</u> LOW CLEARANCE	<u>0</u>

DIRECTION OF INSPECTION S-N

DIRECTION MATCHES PLANS YES

INSPECTED BY Ray L. Kisner	SIGNATURE <i>Ray L. Kisner</i>	ASSISTED BY Andrew C. Stone
-------------------------------	-----------------------------------	--------------------------------

Structure Element Scoring

Structure Number: 770510

Inspection Date 4/25/2018

Element Number	Parent Number	Element Name	Location	Total Quantity	Level 1 Quantity	Level 2 Quantity	Level 3 Quantity	Level 4 Quantity
38	0	Reinforced Concrete Slabs	Deck	9070	9040	30	0	0
109	0	Prestressed Concrete Open Girder/Beam	Beam	1040	1040	0	0	0
521	109	Concrete Protective Coating	Beam	110	110	0	0	0
205	0	Reinforced Concrete Column	Piles and Columns	3	3	0	0	0
215	0	Reinforced Concrete Abutment	Abutments	276	276	0	0	0
220	0	Reinforced Concrete Pile Cap/Footing	Footing	48	48	0	0	0
225	0	Steel Pile	Foundation Pile	18	18	0	0	0
225	0	Steel Pile	Piles and Columns	24	24	0	0	0
234	0	Reinforced Concrete Pier Cap	Caps	169	169	0	0	0
521	234	Concrete Protective Coating	Caps	420	420	0	0	0
303	0	Assembly Joint with Seal	Expansion Joints	50	50	0	0	0
305	0	Assembly Joint without Seal	Expansion Joints	50	50	0	0	0
310	0	Elastomeric Bearing	Bearing Device	20	20	0	0	0
515	310	Steel Protective Coating	Bearing Device	40	40	0	0	0
321	0	Reinforced Concrete Approach Slabs	Approaches	2106	2060	46	0	0
333	0	Other Bridge Railing	Bridge Rail	432	377	55	0	0

Summary of Maintenance Needs

Maintenance By Defect

Structure Number: 770510

Inspection Date: 04/25/2018

MMS Code	Element Name	Defect Name	Recommended Quantity
----------	--------------	-------------	----------------------

Element Structure Maintenance Quantities

Structure Number: 770510

Inspection Date 04/25/2018

Location	MMS Code	Description	Maint Quantity	Total Quantity	Severe Quantity	Poor Quantity	Fair Quantity	Good Quantity
Abutments	3350	Maintenance of Concrete Wings and Wall	0	276	0	0	0	276
Approaches	3353	Maintenance of Concrete Bridge Approach Slabs	0	2106	0	0	46	2060
Beam	3306	Maintenance Concrete Superstructure Components	0	1040	0	0	0	1040
Beam	5603	Partial Cleaning and Painting of Structural Steel	0	110	0	0	0	110
Bearing Device	3334	Bridge Bearing	0	20	0	0	0	20
Bearing Device	3342	Clean and Paint Steel	0	40	0	0	0	40
Bridge Rail	3318	Maintenance of Concrete Bridge Rail	0	432	0	0	55	377
Caps	3348	Maintenance of Concrete Substructure	0	169	0	0	0	169
Caps	5603	Partial Cleaning and Painting of Structural Steel	0	420	0	0	0	420
Deck	3326	Maintenance of Concrete Deck	0	9070	0	0	30	9040
Expansion Joints	3308	Maintenance of Steel Plate Joints	0	100	0	0	0	100
Footing	3348	Maintenance of Concrete Substructure	0	48	0	0	0	48
Foundation Pile	3354	Maintenance of Steel Substructure Components	0	18	0	0	0	18
Piles and Columns	3348	Maintenance of Concrete Substructure	0	3	0	0	0	3
Piles and Columns	3354	Maintenance of Steel Substructure Components	0	24	0	0	0	24

Element Condition and Maintenance Data

Structure Number: 770510

Inspection Date: 04/25/2018

Span 1 Deck Reinforced Concrete Deck Slab

Element Number	Element Name	Total Qty	CS1 Qty	CS2 Qty	CS3 Qty	CS4 Qty
38	Reinforced Concrete Slabs	4,535	4,523	12	0	0 Square Feet

Element Number	Defect Type	Defect Description	CS	CS Qty	Maint Qty
38	Cracking (RC and Other)	6 - 2 FT. LONG X HAIRLINE LONGITUDINAL CRACKS AT END BENT 1 JOINT	2	12	Square Feet

General Comments

Span 1 Left Bridge Rail Concrete and Metal Railing

Element Number	Element Name	Total Qty	CS1 Qty	CS2 Qty	CS3 Qty	CS4 Qty
333	Other Bridge Railing	108	88	20	0	0 Feet

Element Number	Defect Type	Defect Description	CS	CS Qty	Maint Qty
333	Cracking (RC and Other)	HAIRLINE TRANSVERSE AND VERTICAL CRACKS AT 4-6 FT. SPACING	2	20	Feet

General Comments

Span 1 Right Bridge Rail Concrete and Metal Railing

Element Number	Element Name	Total Qty	CS1 Qty	CS2 Qty	CS3 Qty	CS4 Qty
333	Other Bridge Railing	108	93	15	0	0 Feet

Element Number	Defect Type	Defect Description	CS	CS Qty	Maint Qty
333	Cracking (RC and Other)	HAIRLINE TRANSVERSE AND VERTICAL CRACKS AT 4-6 FT. SPACING	2	15	Feet

General Comments

Span 2 Deck Reinforced Concrete Deck Slab

Element Number	Element Name	Total Qty	CS1 Qty	CS2 Qty	CS3 Qty	CS4 Qty
38	Reinforced Concrete Slabs	4,535	4,517	18	0	0 Square Feet

Element Number	Defect Type	Defect Description	CS	CS Qty	Maint Qty
38	Cracking (RC and Other)	9- 2 FT. LONG X HAIRLINE LONGITUDINAL CRACKS AT END BENT 2 JOINT	2	18	Square Feet

General Comments

Span 2 Left Bridge Rail**Concrete and Metal Railing**

Element Number	Element Name	Total Qty	CS1 Qty	CS2 Qty	CS3 Qty	CS4 Qty
333	Other Bridge Railing	108	101	7	0	0 Feet

Element Number	Defect Type	Defect Description	CS	CS Qty	Maint Qty
333	Cracking (RC and Other)	HAIRLINE TRANSVERSE AND VERTICAL CRACKS AT 4-6 FT. SPACING	2	7	Feet

General Comments**Span 2 Right Bridge Rail****Concrete and Metal Railing**

Element Number	Element Name	Total Qty	CS1 Qty	CS2 Qty	CS3 Qty	CS4 Qty
333	Other Bridge Railing	108	95	13	0	0 Feet

Element Number	Defect Type	Defect Description	CS	CS Qty	Maint Qty
333	Cracking (RC and Other)	HAIRLINE TRANSVERSE AND VERTICAL CRACKS AT 4-6 FT. SPACING	2	13	Feet

General Comments**End Bent 1 Cap 1****Reinforced Concrete Pier Cap**

Element Number	Element Name	Total Qty	CS1 Qty	CS2 Qty	CS3 Qty	CS4 Qty
234	Reinforced Concrete Pier Cap	60	60	0	0	0 Feet
521	Concrete Protective Coating	210	210	0	0	0 Square Feet

Element Number	Defect Type	Defect Description	CS	CS Qty	Maint Qty
----------------	-------------	--------------------	----	--------	-----------

General Comments

END BENT PILES NOT VISIBLE DUE TO PPC EARTH WALL ABUTMENT

Bent 1 Pile 3**Reinforced Concrete Column**

Element Number	Element Name	Total Qty	CS1 Qty	CS2 Qty	CS3 Qty	CS4 Qty
205	Reinforced Concrete Column	1	1	0	0	0 Each

Element Number	Defect Type	Defect Description	CS	CS Qty	Maint Qty
----------------	-------------	--------------------	----	--------	-----------

General Comments

FOUNDATION PILES NOT VISIBLE

End Bent 2**Cap 1****Reinforced Concrete Pier Cap**

Element Number	Element Name	Total Qty	CS1 Qty	CS2 Qty	CS3 Qty	CS4 Qty
234	Reinforced Concrete Pier Cap	60	60	0	0	0 Feet
521	Concrete Protective Coating	210	210	0	0	0 Square Feet

Element Number	Defect Type	Defect Description	CS	CS Qty	Maint Qty
----------------	-------------	--------------------	----	--------	-----------

General Comments

END BENT PILES NOT VISIBLE DUE TO PPC EARTH WALL ABUTMENT

Approach 1**Reinforced Concrete Approach Slab**

Element Number	Element Name	Total Qty	CS1 Qty	CS2 Qty	CS3 Qty	CS4 Qty
321	Reinforced Concrete Approach Slabs	1,053	1,013	40	0	0 Square Feet

Element Number	Defect Type	Defect Description	CS	CS Qty	Maint Qty
321	Cracking (RC and Other)	HAIRLINE LONGITUDINAL CRACKS AT END BENT 1 JOINT	2	40	Square Feet

General Comments**Approach 2****Reinforced Concrete Approach Slab**

Element Number	Element Name	Total Qty	CS1 Qty	CS2 Qty	CS3 Qty	CS4 Qty
321	Reinforced Concrete Approach Slabs	1,053	1,047	6	0	0 Square Feet

Element Number	Defect Type	Defect Description	CS	CS Qty	Maint Qty
321	Cracking (RC and Other)	HAIRLINE LONGITUDINAL CRACKS AT END BENT 2 JOINT	2	6	Square Feet

General Comments

Elements Verified

Location	Name	Component	Element Name	Amount
Span 1	Deck	Reinforced Concrete Deck Slab	Reinforced Concrete Slabs	4535
Span 1	Beam 1	Prestressed Bulb T	Prestressed Concrete Open Girder/Beam	104
Span 1	Beam 2	Prestressed Bulb T	Prestressed Concrete Open Girder/Beam	104
Span 1	Beam 3	Prestressed Bulb T	Prestressed Concrete Open Girder/Beam	104
Span 1	Beam 4	Prestressed Bulb T	Prestressed Concrete Open Girder/Beam	104
Span 1	Beam 5	Prestressed Bulb T	Prestressed Concrete Open Girder/Beam	104
Span 1	Left Bridge Rail	Concrete and Metal Railing	Other Bridge Railing	108
Span 1	Right Bridge Rail	Concrete and Metal Railing	Other Bridge Railing	108
Span 1	Expansion Joint	Prefabricated Joint with Seal	Assembly Joint with Seal	50
Span 1	Near Bearing	Elastomeric Bearing with Metal Plates	Elastomeric Bearing	1
Span 1	Far Bearing	Elastomeric Bearing with Metal Plates	Elastomeric Bearing	1
Span 1	Near Bearing	Elastomeric Bearing with Metal Plates	Elastomeric Bearing	1
Span 1	Far Bearing	Elastomeric Bearing with Metal Plates	Elastomeric Bearing	1
Span 1	Near Bearing	Elastomeric Bearing with Metal Plates	Elastomeric Bearing	1
Span 1	Far Bearing	Elastomeric Bearing with Metal Plates	Elastomeric Bearing	1
Span 1	Near Bearing	Elastomeric Bearing with Metal Plates	Elastomeric Bearing	1
Span 1	Far Bearing	Elastomeric Bearing with Metal Plates	Elastomeric Bearing	1
Span 1	Near Bearing	Elastomeric Bearing with Metal Plates	Elastomeric Bearing	1
Span 1	Far Bearing	Elastomeric Bearing with Metal Plates	Elastomeric Bearing	1
Span 2	Deck	Reinforced Concrete Deck Slab	Reinforced Concrete Slabs	4535
Span 2	Beam 1	Prestressed Bulb T	Prestressed Concrete Open Girder/Beam	104
Span 2	Beam 2	Prestressed Bulb T	Prestressed Concrete Open Girder/Beam	104
Span 2	Beam 3	Prestressed Bulb T	Prestressed Concrete Open Girder/Beam	104
Span 2	Beam 4	Prestressed Bulb T	Prestressed Concrete Open Girder/Beam	104
Span 2	Beam 5	Prestressed Bulb T	Prestressed Concrete Open Girder/Beam	104
Span 2	Left Bridge Rail	Concrete and Metal Railing	Other Bridge Railing	108
Span 2	Right Bridge Rail	Concrete and Metal Railing	Other Bridge Railing	108
Span 2	Expansion Joint	Finger Joint	Assembly Joint without Seal	50
Span 2	Near Bearing	Elastomeric Bearing with Metal Plates	Elastomeric Bearing	1
Span 2	Far Bearing	Elastomeric Bearing with Metal Plates	Elastomeric Bearing	1
Span 2	Near Bearing	Elastomeric Bearing with Metal Plates	Elastomeric Bearing	1
Span 2	Far Bearing	Elastomeric Bearing with Metal Plates	Elastomeric Bearing	1
Span 2	Near Bearing	Elastomeric Bearing with Metal Plates	Elastomeric Bearing	1
Span 2	Far Bearing	Elastomeric Bearing with Metal Plates	Elastomeric Bearing	1
Span 2	Near Bearing	Elastomeric Bearing with Metal Plates	Elastomeric Bearing	1
Span 2	Far Bearing	Elastomeric Bearing with Metal Plates	Elastomeric Bearing	1
Span 2	Near Bearing	Elastomeric Bearing with Metal Plates	Elastomeric Bearing	1
Span 2	Far Bearing	Elastomeric Bearing with Metal Plates	Elastomeric Bearing	1
Bent 1	Cap 1	Reinforced Concrete Pier Cap	Reinforced Concrete Pier Cap	49
Bent 1	Pile 1	Reinforced Concrete Column	Reinforced Concrete Column	1
Bent 1	Pile 2	Reinforced Concrete Column	Reinforced Concrete Column	1
Bent 1	Pile 3	Reinforced Concrete Column	Reinforced Concrete Column	1
End Bent 1	Cap 1	Reinforced Concrete Pier Cap	Reinforced Concrete Pier Cap	60
End Bent 1	Abutment	Reinforced Concrete Abutment	Reinforced Concrete Abutment	138
End Bent 2	Cap 1	Reinforced Concrete Pier Cap	Reinforced Concrete Pier Cap	60

Elements Verified

Location	Name	Component	Element Name	Amount
End Bent 2	Abutment	Reinforced Concrete Abutment	Reinforced Concrete Abutment	138

General Inspection Notes

Bent 1

Cap 1

END BENT PILES NOT VISIBLE DUE TO PPC EARTH WALL ABUTMENT

Bent 1

Pile 3

FOUNDATION PILES NOT VISIBLE

Bent 2

Cap 1

END BENT PILES NOT VISIBLE DUE TO PPC EARTH WALL ABUTMENT

National Bridge and NC Inspection Items

Structure Number: 770510

Inspection Date: 04/25/2018

National Bridge Inventory Items

Item	Grade Scale	Grade
Item 58: Deck	0 - 9 , N	8
Item 59: Superstructure	0 - 9 , N	8
Item 60: Substructure	0 - 9 , N	8
Item 61: Channel and Channel Protection	0 - 9 , N	N
Item 62: Culvert	0 - 9 , N	N
Item 71: Waterway Adequacy	0 - 9 , N	N
Item 72: Approach Roadway Alignment	0 - 9 , N	8

Note: If NBI Inspection Item is not present, code NBI item with "N"

NC SMU Inspection Items

Item	Grade Scale	Grade	Maint. Qty.	Maint. Code
Deck Debris	G, F, P, or C	G	0	3376
Drainage System	G, F, P, or C	G	0	3332
Utilities	G, F, P, or C			
Slope Protection	G, F, P, or C	G	0	3352
Scour	G, F, P, or C			
Wingwall	G, F, P, or C		0	3350
Field Scour Evaluation				
Drift	G, F, P, or C			
Fender System	G, F, P, or C			
Movable Span Machinery	G, F, P, or C			
Response to Live Load	G, F, P, or C	G		
Estimated Remaining Life	0 - 100 Years	50		
Superstructure Paint Code				

Note: If NC SMU Inspection Item is not present, leave NC SMU item blank

Inspection Information

Item	Grade Scale	Grade
Sign Noticed Issued	YES/NO	N
Priority Maintenance Request Submitted	YES/NO	N
Inspection Time	Hours	6
Traffic Control Time	Hours	
Snooper Time	Hours	
Ladder Used	YES/NO	Y
Bucket Truck Used	YES/NO	N
Boat Used	YES/NO	N
Other Equipment Used	YES/NO	N

National Bridge and NC SMU Inspection Item Details

Structure Number: 770510

Inspection Date: 04/25/2018

Item	Substructure - Item 60	Grade	8	Maint Code		Qty.	0
-------------	------------------------	--------------	---	-------------------	--	-------------	---

Details END BENT PILES , INTERIOR BENT FOOTING AND FOUNDATION PILES NOT VISIBLE

Item	Ladder Used	Grade	Y	Maint Code		Qty.	0
-------------	-------------	--------------	---	-------------------	--	-------------	---

Details NEEDED AT BENT 1 ONLY



Approach 1: HAIRLINE LONGITUDINAL CRACKS AT END BENT 1 JOINT



Span 1 Deck: 6 - 2 FT. LONG X HAIRLINE LONGITUDINAL CRACKS AT END BENT 1 JOINT



Span 1 Left Bridge Rail: HAIRLINE TRANSVERSE AND VERTICAL CRACKS AT 4-6 FT. SPACING



Span 1 Right Bridge Rail: HAIRLINE TRANSVERSE AND VERTICAL CRACKS AT 4-6 FT. SPACING



Span 2 Right Bridge Rail: HAIRLINE TRANSVERSE AND VERTICAL CRACKS AT 4-6 FT. SPACING



Span 2 Deck: 9- 2 FT. LONG X HAIRLINE LONGITUDINAL CRACKS AT END BENT 2 JOINT



Span 2 Left Bridge Rail: HAIRLINE TRANSVERSE AND VERTICAL CRACKS AT 4-6 FT. SPACING



Approach 2: HAIRLINE LONGITUDINAL CRACKS AT END BENT 2 JOINT



SPAN 1 BEAM 1 FAR BEARING



WEST END OF BENT 1 CAP



WEST PROFILE



LOOKING EAST, NORTHBOUND LANE I-95 THRU SPAN 1



ABUTMENT 1 PPC EARTHWALL



END BENT 1



SPAN 1 BEAM 3 NEAR BEARING



EAST PROFILE



GUARDRAIL END TERMINAL



GUARDRAIL POST SPACING AT MID PORTION 6.25 FT.



LOOKING NORTH



GUARDRAIL POST SPACING AT TRANSITION 1.75 FT.



GUARDRAIL CONNECTION



EXTERIOR GUARDRAIL CONNECTION



END BENT 1 JOINT



LOOKING NORTH, OFF BRIDGE



LOOKING SOUTH, OFF BRIDGE



LOOKING EAST, NORTH I-95



LOOKING WEST, SOUTH I-95



SIMILAR RAIL - PARAPET CONNECTION



END BENT 2 JOINT



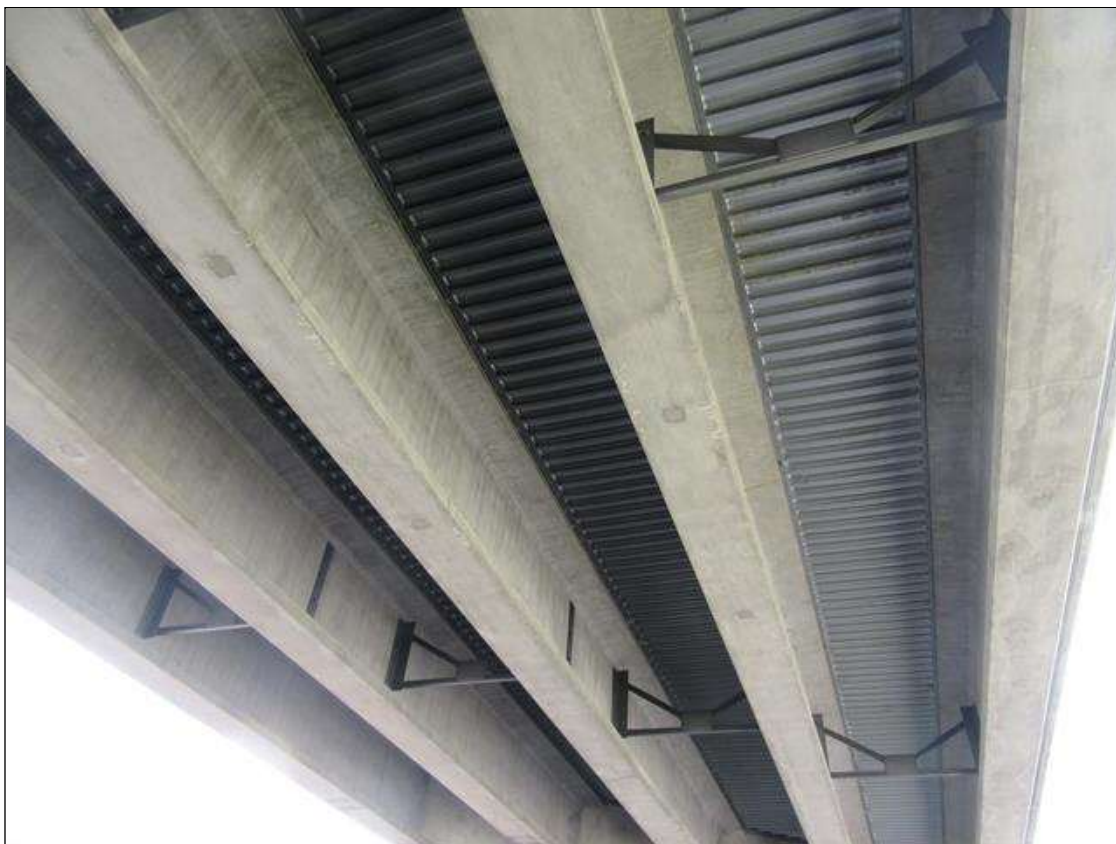
LOOKING SOUTH



END BENT 2



ABUTMENT 2



SUPERSTRUCTURE



BENT 1



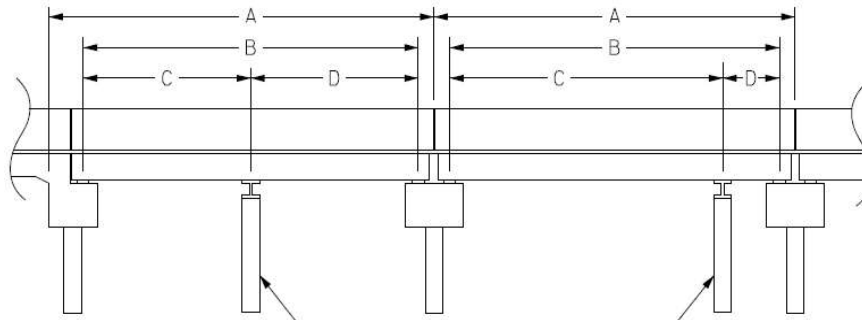
LOOKING WEST, SOUTHBOUND LANE I-95 THRU SPAN 2

Structure Data Worksheet

Span Profile

County: **ROBESON**

Structure Number: **770510**



A: SPAN LENGTH
 B: BEARING TO BEARING
 C: DISTANCE FROM NEAR BEARING
 D: DISTANCE TO FAR BEARING

Span Number	Span Length	Bearing to Bearing	Crutch/ Helper Bent	Distance to Near Bearing	Distance to Far Bearing
1	107.750	102.614			
2	107.750	102.614			

NATIONAL BRIDGE INVENTORY----- STRUCTURE INVENTORY AND APPRAISAL

Run Date: 08/07/2018

IDENTIFICATION

(1) STATE NAME -NORTH CAROLINA BRIDGE **770510**
 (8) STRUCTURE NUMBER(FEDERAL) 000000001550510
 (5) INVENTORY ROUTE (ON/UNDER) - ON 21003010
 (2) STATE HIGHWAY DEPARTMENT DISTRICT 1
 (3) COUNTY CODE 155 (4) PLACE CODE 39700
 (6) FEATURE INTERSECTED - I-95
 (7) FACILITY CARRIED US301N
 (9) LOCATION 0.5 MI. N. JCT. SR1005
 (11)MILEPOINT
 (16)LAT 34° 40' 12.30" (17)LONG 79° 0' 21.70"
 (98)BORDER BRIDGE STATE CODE PCT SHARE
 (99)BORDER BRIDGE STRUCTURE NO

SUFFICIENCY RATING = 98
 STATUS = Not Deficient

CLASSIFICATION CODE

(112)NBIS BRIDGE SYSTEM - YES
 (104)HIGHWAY SYSTEM Is not on NHS 0
 (26) FUNCTIONAL CLASS - Other Principal Arterial 14
 (100)STRAHNET HIGHWAY - Not a STRAHNET Route 0
 (101)PARALLEL STRUCTURE - Right Parallel Structure R
 (102)DIRECTION OF TRAFFIC - 1-way Traffic 1
 (103)TEMPORARY STRUCTURE -
 (110)DESIGNATED NATIONAL NETWORK - On the National Network 1
 (20) TOLL On Free Road 3
 (31) MAINTAIN - State Highway Agency 01
 (22) OWNER - State Highway Agency 01
 (37) HISTORICAL SIGNIFICANCE - Not Eligible 5

STRUCTURE TYPE AND MATERIAL

(43) STRUCTURE TYPE MAIN: Prestressed Concrete Continuous
 TYPE - Stringer Multibeam or Girder CODE 602
 (44) STRUCTURE TYPE APPR :
 TYPE - CODE 000
 (45) NUMBER OF SPANS IN MAIN UNIT 2
 (46) NUMBER OF APPROACH SPANS
 (107)DECK STRUCTURE TYPE - 1 CODE
 (108)WEARING SURFACE / PROTECTIVE SYSTEM :
 (A) TYPE OF WEARING SURFACE - CODE
 (B) TYPE OF MEMBRANE - CODE
 (C) TYPE OF DECK PROTECTION - CODE

CONDITION CODE

(58) DECK 8
 (59) SUPERSTRUCTURE 8
 (60) SUBSTRUCTURE 8
 (61) CHANNEL & CHANNEL PROTECTION N
 (62) CULVERTS N

LOAD RATING AND POSTING CODE

(31) DESIGN LOAD HL 93 A
 (63) OPERATING RATING METHOD - Load and Resistance Factor 3
 (64) OPERATING RATING - HS-50 90
 (65) INVENTORY RATING METHOD - Load and Resistance Factor 3
 (66) INVENTORY RATING - HS-38 68
 (70) BRIDGE POSTING - No Posting Required 5
 (41) STRUCTURE OPEN, POSTED ,OR CLOSED A
 DESCRIPTION - Open, No Restriction

AGE AND SERVICE

(27) YEAR BUILT 2014
 (106)YEAR RECONSTRUCTED
 (42) TYPE OF SERVICE : ON - Highway - Pedestrian
 UNDER - Highway CODE 51
 (28) LANES: ON STRUCTURE 2 UNDER STRUCTURE 4
 (29) AVERAGE DAILY TRAFFIC 5500
 (30) YEAR OF ADT 2013 (109) TRUCK ADT PCT 6%
 (19) BYPASS OR DETOUR LENGTH 0 MI

APPRAISAL CODE

(67) STRUCTURAL EVALUATION 8
 (68) DECK GEOMETRY 4
 (69) UNDERCLEARANCES,VERTI & HORIZ 6
 (71) WATERWAY ADEQUACY N
 (72) APPROACH ROADWAY ALIGNMENT 8
 (36) TRAFFIC SAFETY FEATURES 1111
 (113)SCOUR CRITICAL BRIDGES N

GEOMETRIC DATA

(48) LENGTH OF MAXIMUM SPAN 103 FT
 (49) STRUCTURE LENGTH 216 FT
 (50)CURB OR SIDEWALK: LEFT 0 FT RIGHT 5.5 FT
 (51) BRIDGE ROADWAY WIDTH CURB TO CURB 34 FT
 (52) DECK WIDTH OUT TO OUT 42.083 FT
 (32) APPROACH ROADWAY WIDTH (W/SHOULDERS) 34 FT
 (33) BRIDGE MEDIAN - No Median CODE 1
 (34) SKEW 37° (35) STRUCTURE FLARED 0
 (10) INVENTORY ROUTE MIN VERT CLEAR 999.9 FT
 (47) INVENTORY ROUTE TOTAL HORIZ CLEAR 34 FT
 (53) MIN VERT CLEAR OVER BRIDGE RDWY 999.9 FT
 (54) MIN VERT UNDERCLEAR REF Highway 18.4 FT
 (55) MIN LAT UNDERCLEAR RT REF Highway 37.917 FT
 (56) MIN LAT UNDERCLEAR LT REF - 12.958 FT

PROPOSED IMPROVEMENTS CODE

(75) TYPE OF WORK - CODE
 (76) LENGTH OF STRUCTURE IMPROVEMENT
 (94) BRIDGE IMPROVEMENT COST
 (95) ROADWAY IMPROVEMENT COST
 (96) TOTAL PROJECT COST
 (97) YEAR OF IMPROVEMENT COST ESTIMATE
 (114)FUTURE ADT 11000 (115) YEAR FUTURE ADT 2025

INSPECTIONS

(90) INSPECTION DATE 04/25/2018
 (92) CRITICAL FEATURE INSPECTION : (93) CFI DATE
 A) FRACTURE CRIT DETAIL - NO A)
 B) UNDERWATER INSP - NO B)
 C) OTHER SPECIAL INSP NO C)
 SCOUR

NAVIGATION DATA

(38) NAVIGATION CONTROL - Not Applicable CODE N
 (111)PIER PROTECTION - CODE
 (39) NAVIGATION VERTICAL CLEARANCE
 (116)VERT - LIFT BRIDGE NAV MIN VERT CLEAR FT
 (40) NAVIGATION HORIZONTAL CLEARANCE FT

Structure No: 770510

County: ROBESON

Run Date:

Span Number	Feature Intersected	Inventory Route	Minimum Maximum Vertical Clearance	Milepoint	Base Highway Network	LRS Inventory Route	Toll	Functional Classification	Nuner of Lanes	Average Daily Traffic	Year of Average Daily Traffic	Total Horizontal Clearance	See Note 1							
													Reference Feature	Minimum Vertical Underclearance	Right Lateral Underclearance	Left Lateral Underclearance	Underclearance Appraisal Grade	STRAHNET Highway Designator	Direction of Traffic	Highway System of Route
	6	5	10	11	12	13	20	26	28	29	30	47	54A	54	55	56	69	100	102	104
1	I95N	11000950	17.9	21.60	1	10095		11	2	21500	2013	74.5	H	17.7	37.25	13	9	1	1	1
2	I95S	11000950	18.6	21.60	1	10095		11	2	21500	2013	74.83	H	18.4	37.92	12.96	9	1	1	1

Note 1: Items 54, 55, and 56 are not reported FHWA under route data points but are collected for each under route to determine the minimum value for Underclearance Appraisal Item 69. The under route that generates the lowest Underclearance Appraisal value will be reported on the Facility Carried record.

BRIDGE MANAGEMENT UNIT

DATA ON EXISTING STRUCTURE

Run Date: 08/07/2018

COUNTY : ROBESON DIVISION : 6 DISTRICT : 1 STRUCTURE NUMBER : 770510 LENGTH : 216 FEET

ROUTE CARRIED : US301N FEATURE INTERSECTED : I-95

LOCATED : 0.5 MI. N. JCT. SR1005 BRIDGE NAME : CITY : LUMBERTON

FUNC. CLASS : 14 SYST.ON : FA SYST.UNDER : NFA ADT & YR : 5500 2013 RAIL TYPE : LT 749 RT 749

BUILT : 2014 BY : DOH PROJ : 33901.2.1 FED.AID PROJ : IMF-095-1(87)22 DESIGN LOAD : HL 93

REHAB : BY : PROJ : ALIGNMENT : TAN SKEW : 53 LANES : ON 2 UNDER 4

NAVIGATION : VC FT HC FT HT. CRN. TO BED : 0 FT WATER DEPTH : 0 FT

SUPERSTRUCTURE : RC DECK ON PRESTRESSED CONCRETE MODIFIED BULB TEES (CONTINUOUS), SIP FORMS, APPROACH SLABS

SUBSTRUCTURE : END BENTS:RC CAPS ON STEEL PILES; WITH MSE WALLS, INT. BENT:3 COLUMN, RC POST & BEAM, PILE FOOTING

SPANS : 2@107' 9" CONTINUOUS, COMPOSITE

BEAMS OR GIRDERS : 5 LINES OF 63" PRESTRESSED CONCRETE MODIFIED BULB TEES (CONTINUOUS) @ 8' 7" CENTERS

FLOOR : 8.25" RC, NO AWS ENCROACHMENT : DECK (OUT TO OUT) : 42.083 FT

CLEAR ROADWAY : 34 FT BETWEEN RAILS : 39.5 FT SIDEWALK OR CURB : LT 0 FT RT 5.5 FT

VERT.CL.OVER : 999.9 FT

INV.RTG. : HS-38 OPE.RTG. : HS-50 CONTR.MEMBER : POSTED : SV TTST DATE

SYSTEM : Primary U.S. Route GREEN LINE ROUTE : Y

UNDER ROUTES AND CLEARANCES

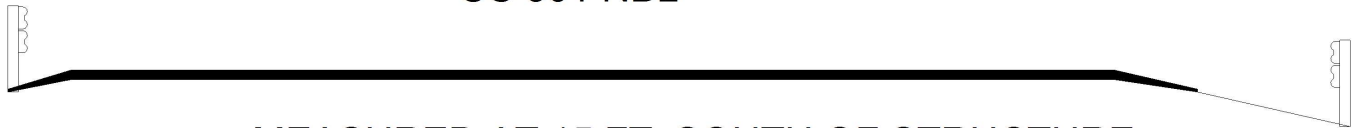
Span	Route Description	Vertical Clearances		Horizontal Clearances		
		MMVC	MVC	Total	Left	Right
1	I95N	17.90	17.70	74.50	13	37.25
2	I95S	18.60	18.40	74.8340	12.9580	37.9170

Note: All measurements are in feet.

REMARKS :

Bridge Inspection Field Sketch

US 301 NBL



MEASURED AT 15 FT. SOUTH OF STRUCTURE

Roadway	30.167ft Wide	2 Paved Lanes	Looking North
Left Shoulder	1.833ft Wide	1.833ft Paved	
Right Shoulder	6.834ft Wide	2.417ft Paved	4.417ft Unpaved
Left Guardrail	1.833ft from road		
Right Guardrail	6.834ft from road		

MEASUREMENTS VERIFIED BY RLK / DLK 4/27/16

MEASUREMENTS VERIFIED BY ACS 4/25/18

Title

APPROACH ROADWAY

Description

LOOKING NORTH

Bridge No: 770510

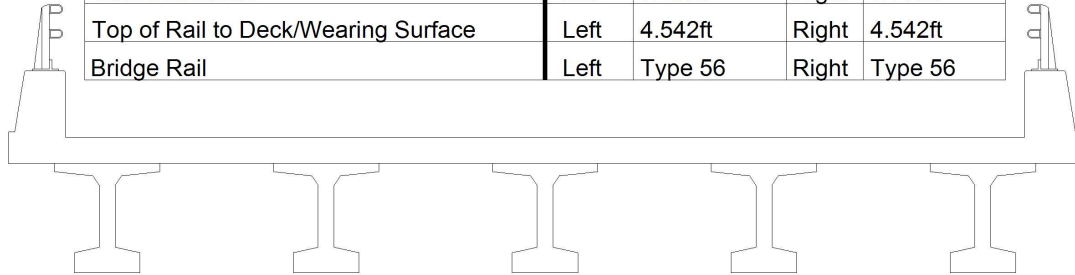
Drawn By: RLK

Date: 4/21/2014

File Name: S0098001528

Bridge Inspection Field Sketch

Deck Width/Out to Out	42.083ft	Between Rails	39.5ft
Clear Roadway	34ft	Wearing Surface	
Median Width		Median Height	
Curb Height		Left	Right 0.5ft
Sidewalk Width		Left	Right 5.5ft
Clear Roadway (Rail to Median)		Left	Right
Guardrail Width		Left 1.167ft	Right 1.167ft
Top of Rail to Deck/Wearing Surface		Left 4.542ft	Right 4.542ft
Bridge Rail		Left Type 56	Right Type 56



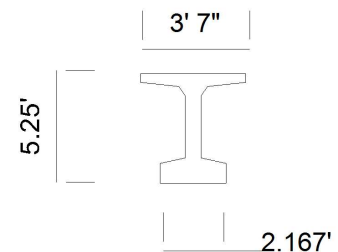
Measurements for Span #	1	SPAN 2 IS SIMILAR	
Deck Thickness	0.917	Left Overhang	3.875
Top of Rail to Bottom of Beam	11	Right Overhang	3.875

Beam Number	Beam Type	Spacing	Comments
1	Concrete Bulb Tee	ft	
2	Concrete Bulb Tee	8.583ft	
3	Concrete Bulb Tee	8.583ft	
4	Concrete Bulb Tee	8.583ft	
5	Concrete Bulb Tee	8.583ft	

MEASUREMENTS VERIFIED BY RLK / DLK 4/27/16

MEASUREMENTS VERIFIED BY ACS 4/25/18

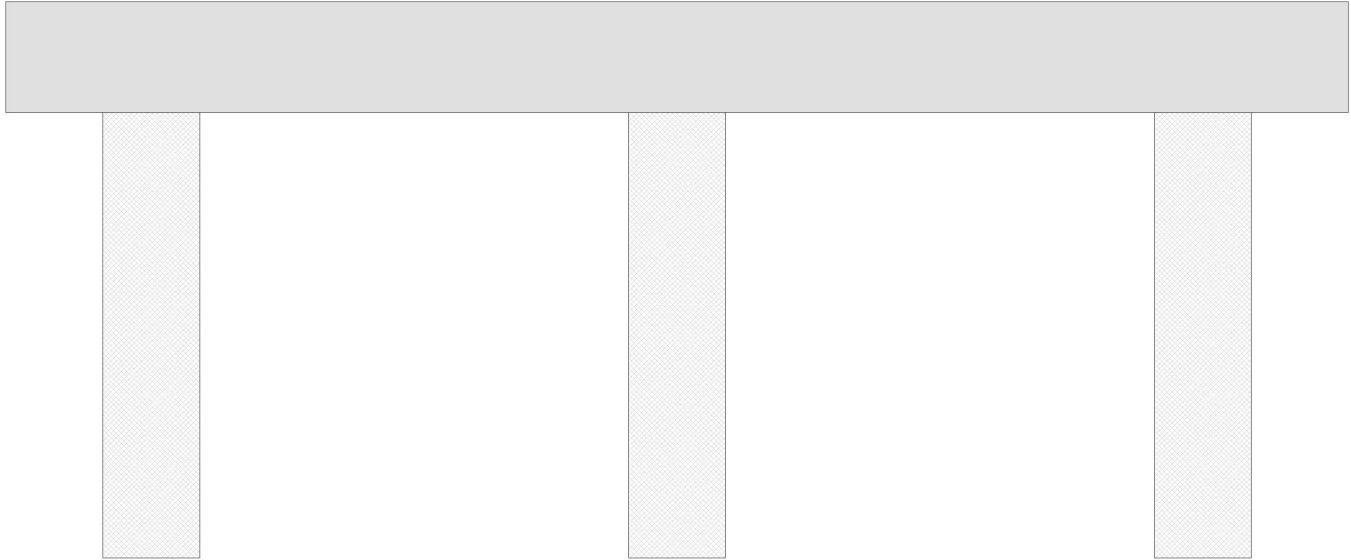
SIMILAR GIRDER



STEEL INT. DIAPS. AT 1/3 , 2/3 POINTS IN BOTH SPANS

Title SUPERSTRUCTURE		Description SIMILAR SECTION		
Bridge No: 770510	Drawn By: RLK	Date: 4/21/2014	File Name: S0098001529	

Bridge Inspection Field Sketch



Cap Information			Material Cast-in-Place Concrete							
Length	Width	Height	Left Overhang	Right Overhang	Left Beam to End of Cap.	Right Beam to End of Cap.				
48.500 ft.	4.667 ft.	4.000 ft.	5.250 ft.	5.250 ft.	2.792 ft.	2.750 ft.				
Subcap Information			Material							
Length	Width	Height	Left Overhang	Right Overhang	Left Pile to Splice.					
Sill Information			Material							
Length	Width	Height								
Pile #	Material	Spacing	Width/Dia.	Height	Length	Orientation	Driven?	Replacement?	Removed?	Collar?
1	Concrete		3.5 ft.			Vertical	No	No	No	No
2	Concrete	19 ft.	3.5 ft.			Vertical	No	No	No	No
3	Concrete	19 ft.	3.5 ft.			Vertical	No	No	No	No
EBTS: RC CAPS ON STL. PILES NOT VISIBLE DUE TO EARTH WALL MEASUREMENTS VERIFIED BY RLK / DLK 4/27/16 MEASUREMENTS VERIFIED BY ACS 4/25/18										
Bent/Abutment #: 1			Similar Bents: NONE							

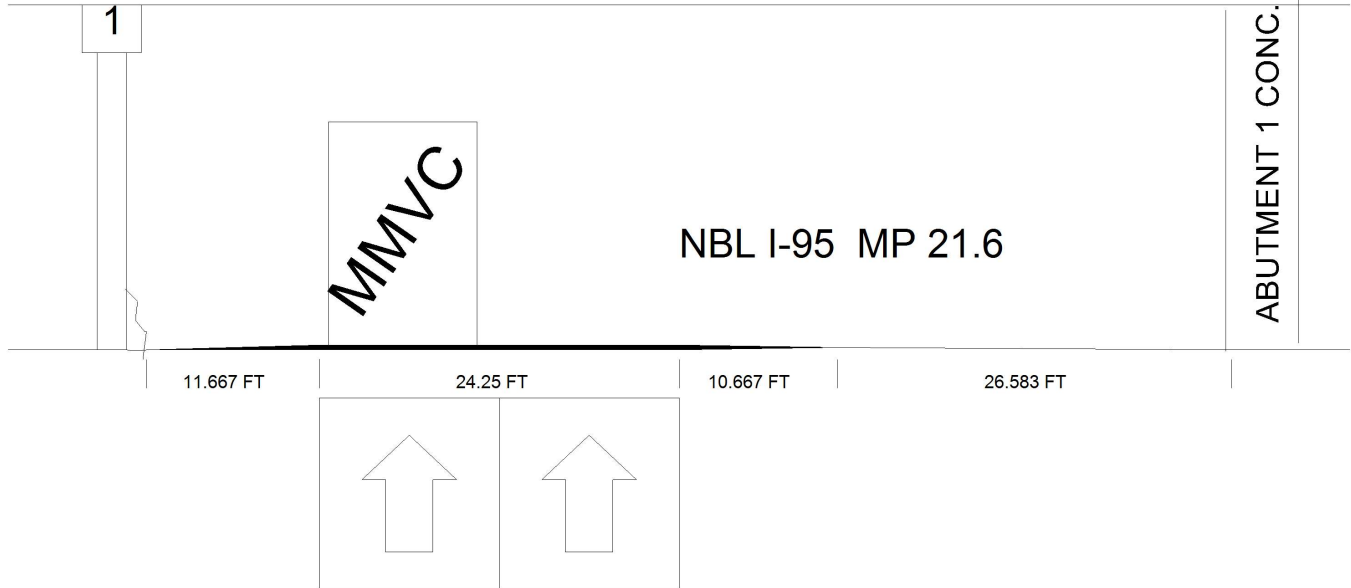
Title				Description			
SUBSTRUCTURE				BENT 1			
Bridge No:	770510	Drawn By:	RLK	Date:	4/21/2014	File Name:	S0098001530

Bridge Inspection Field Sketch

NBL US 301

Span 1

ABUTMENT 1 CONC. EARTH WALL



Roadway 1		Direction of Traffic	North
Distance to Left Rail	11.667FT	Distance to Right Rail	
Distance to Left Toe of Slope		Distance to Left Bent	13FT
Distance to Right Toe of Slope		Distance to Right Bent	37.25FT
MMVC	17.9 Ft at Beam 1, 10 FT from 10' FROM LEFT EDGE OF PAVEMENT		
MVC	17.7 Ft at Beam 1, 0 FT from AT RIGHT WHITE LINE, EDGE OF PAVEMENT		

MEASUREMENTS VERIFIED BY RLK / DLK 4/27/16

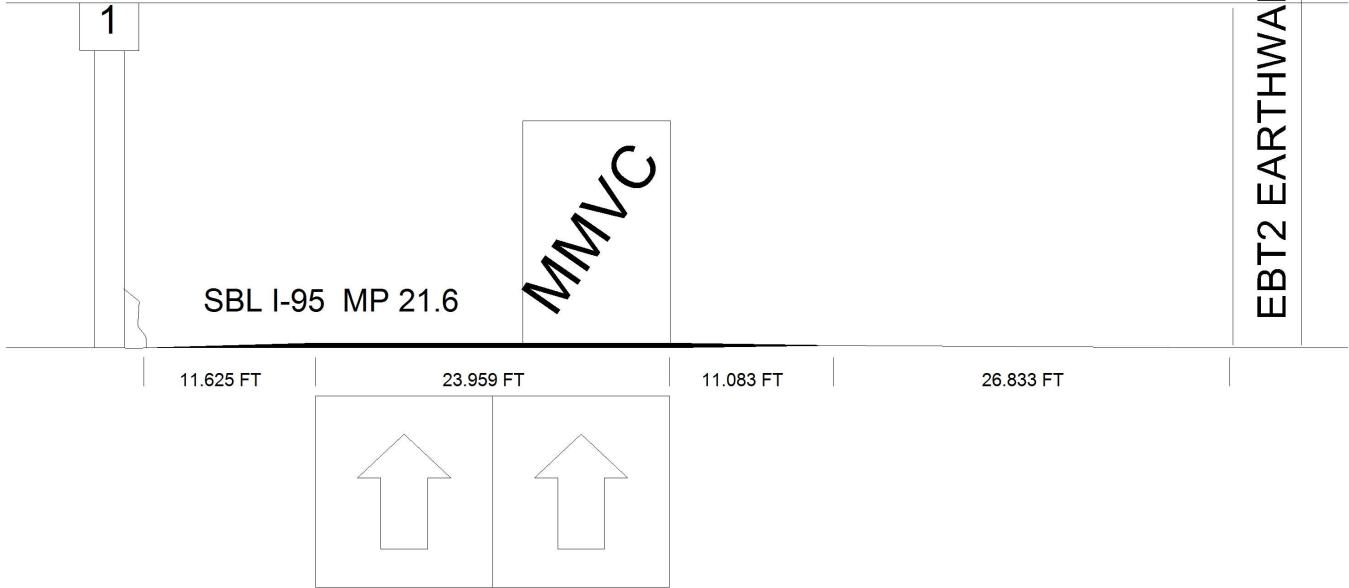
MEASUREMENTS VERIFIED BY RLK 4/25/18

Title SPAN 1 UNDERCLEARANCE		Description LOOKING NORTH	
Bridge No: 770510	Drawn By: RLK	Date: 4/27/2016	File Name: S0098001531

Bridge Inspection Field Sketch

US 301

Span 2



Roadway 1		Direction of Traffic	South
Distance to Left Rail	11.625FT	Distance to Right Rail	
Distance to Left Toe of Slope		Distance to Left Bent	12.958FT
Distance to Right Toe of Slope		Distance to Right Bent	37.917FT
MMVC	18.6 Ft at Beam 1, 10 FT from 10' FROM RT WHITE LINE		
MVC	18.4 Ft at Beam 1, 0 FT from AT CENTERLINE OF PAVEMENT		

MEASUREMENTS VERIFIED BY RLK / DLK 4/27/16

MEASUREMENTS VERIFIED BY RLK 4/25/18

Title SPAN 2 UNDERCLEARANCE		Description LOOKING SOUTH	
Bridge No: 770510	Drawn By: RLK	Date: 4/27/2016	File Name: S0098001532