

PLAN

NOTES

1. ALL DIMENSIONS ARE IN FEET AND INCHES UNLESS OTHERWISE SPECIFIED.

2. THE BRIDGE SHALL BE CONSTRUCTED OF REINFORCED CONCRETE.

3. THE BRIDGE SHALL BE DESIGNED TO CARRY A TRUCK LOAD OF 20,000 LBS.

4. THE BRIDGE SHALL BE DESIGNED TO WITHSTAND A WIND LOAD OF 40 M.P.H.

5. THE BRIDGE SHALL BE DESIGNED TO WITHSTAND A SEISMIC LOAD OF 0.1 G.

6. THE BRIDGE SHALL BE DESIGNED TO WITHSTAND A FLOOD LOAD OF 10 FEET ABOVE THE NORMAL WATER LEVEL.

7. THE BRIDGE SHALL BE DESIGNED TO WITHSTAND A COLLISION LOAD OF 100,000 LBS.

8. THE BRIDGE SHALL BE DESIGNED TO WITHSTAND A FIRE LOAD OF 100,000 B.T.U.

9. THE BRIDGE SHALL BE DESIGNED TO WITHSTAND A TERRORISM LOAD OF 10,000 LBS.

10. THE BRIDGE SHALL BE DESIGNED TO WITHSTAND A TERRORISM LOAD OF 10,000 LBS.

PROJECT NO. 8-3982
ROBESON-CUMBERLAND COUNTY
STATION: 712+10.51

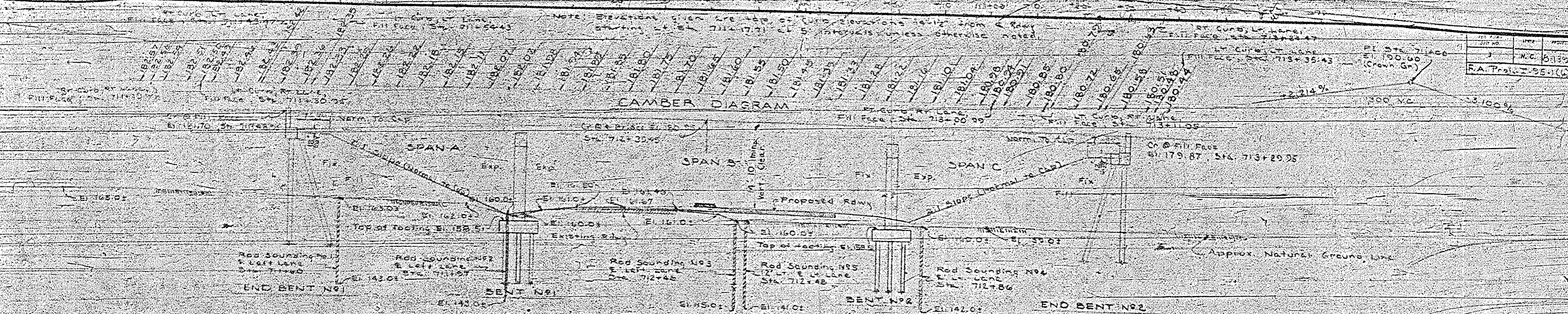
STATE OF NORTH CAROLINA
STATE HIGHWAY COMMISSION
 YELSON
 ROBERT T. HARRIS
 YALDEN
 RECEIVED
 10/10/50

DATE: 10/10/50
 DRAWN BY: J. H. HARRIS
 CHECKED BY: J. H. HARRIS

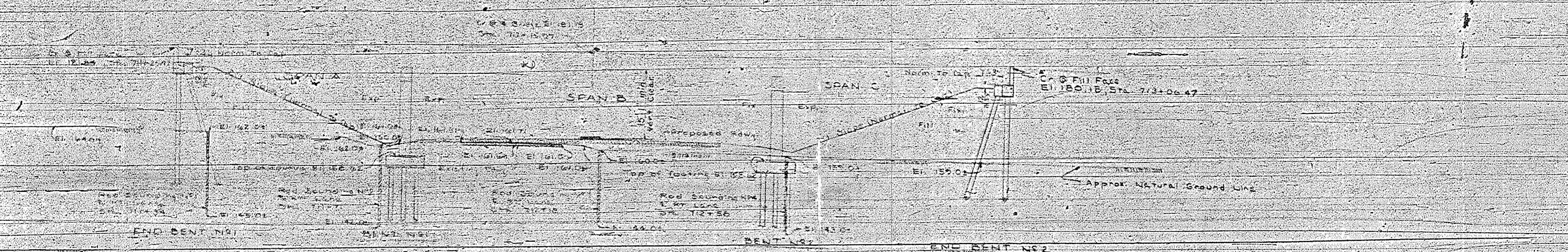
NOTE: ELEVATIONS GIVEN ARE BASED ON CROWN ELEVATIONS 50-112' FROM A ROAD STARTING AT STA. 7114+17.71 CL 5 UNLESS OTHERWISE NOTED.

REV.	DATE	BY
1	11/21/55	W.C. 6139
R.A. Proj. 2-95-1(4)		

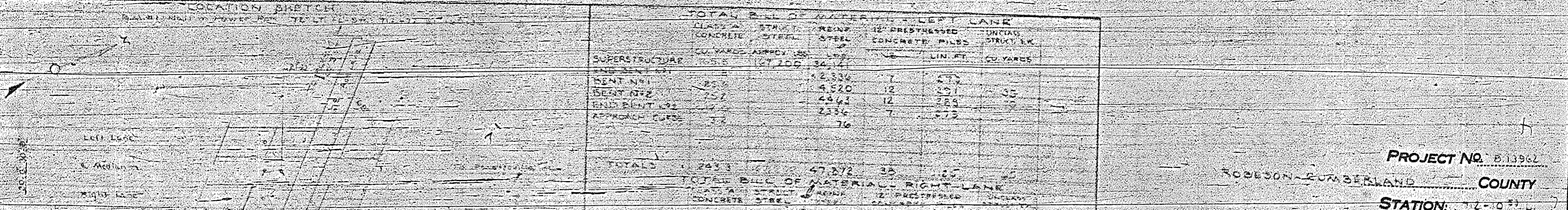
CAMBER DIAGRAM



SECTION ALONG E BRIDGE (ALL BENTS ON SECTION A-A) LEFT LANE



SECTION ALONG E BRIDGE (ALL BENTS ON SECTION A-A) RIGHT LANE

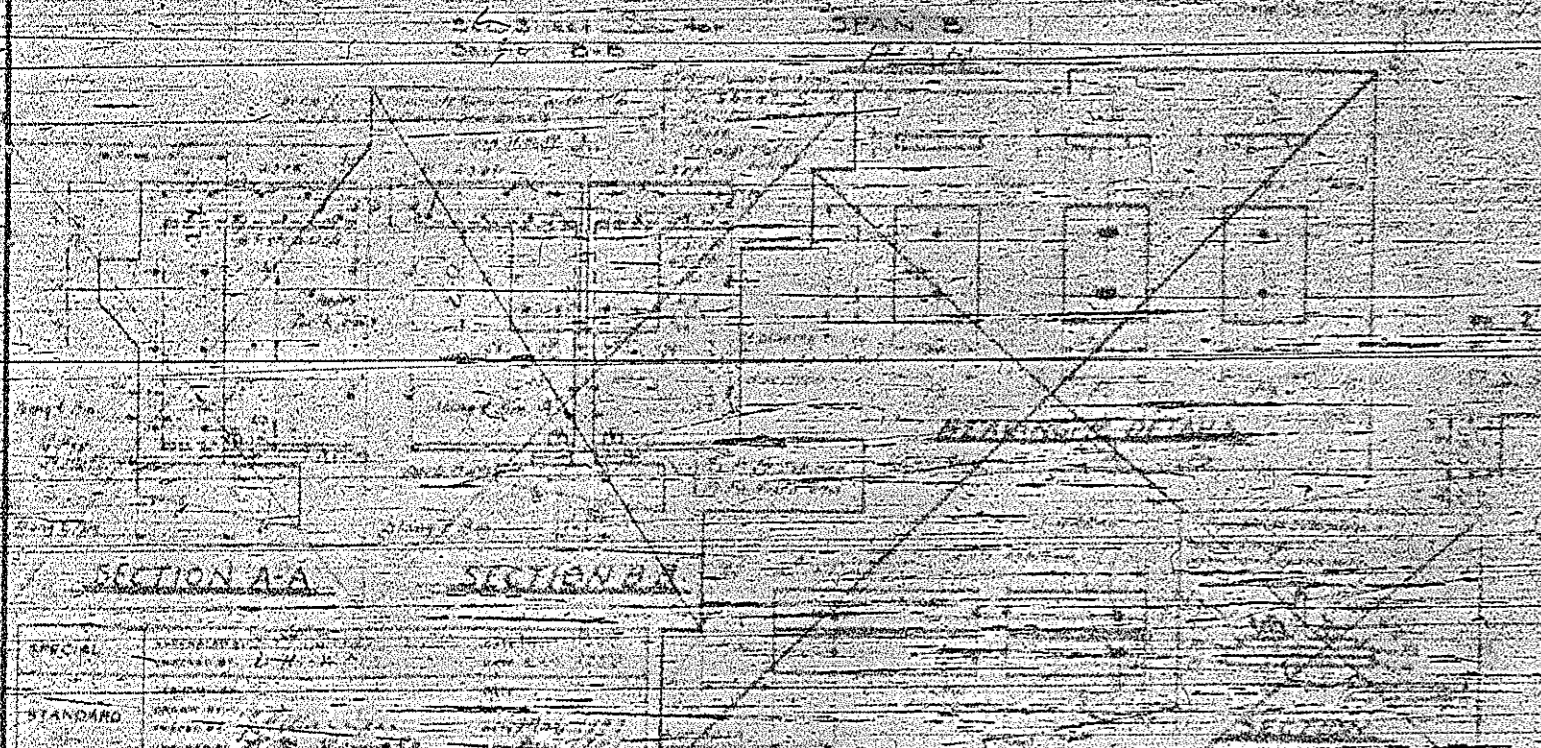
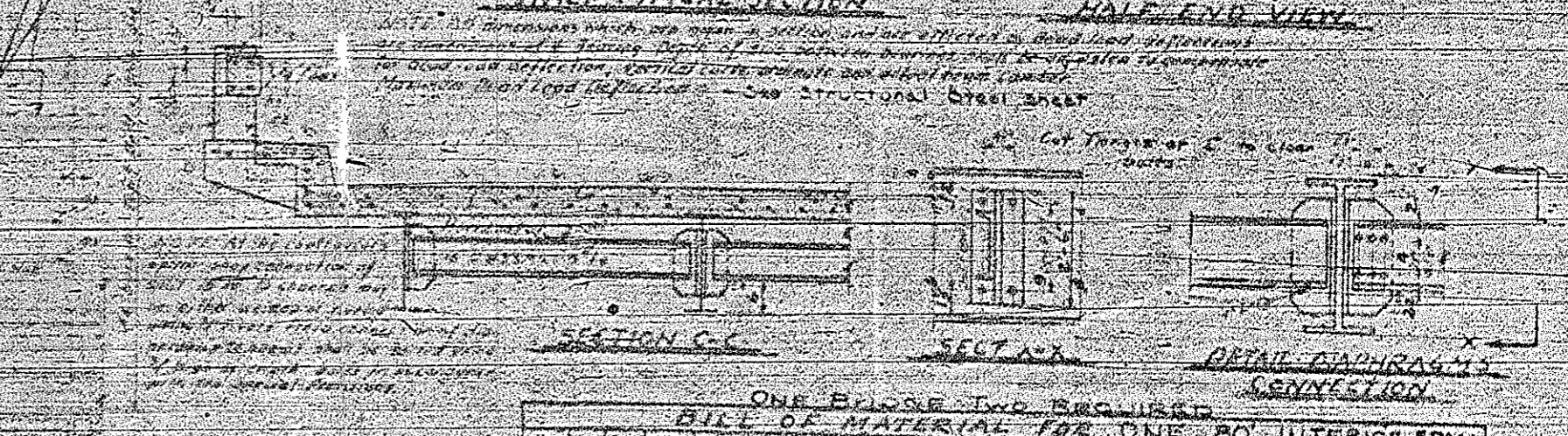
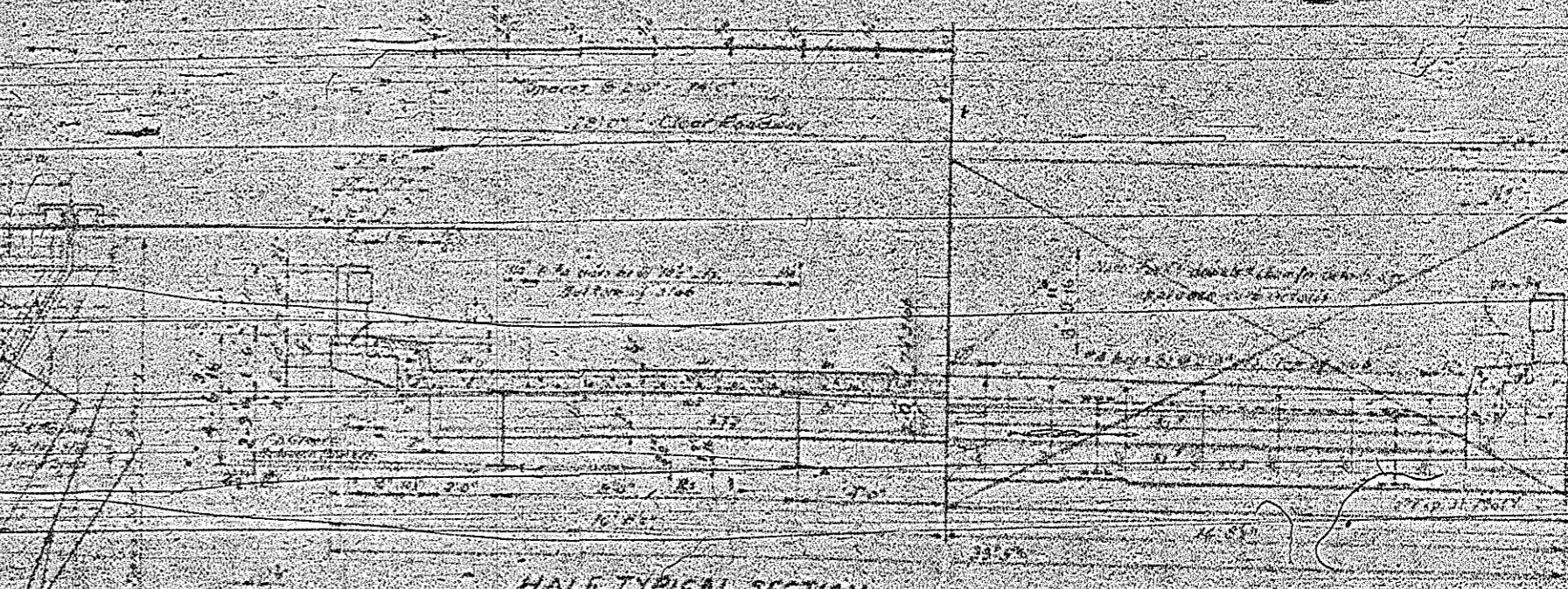
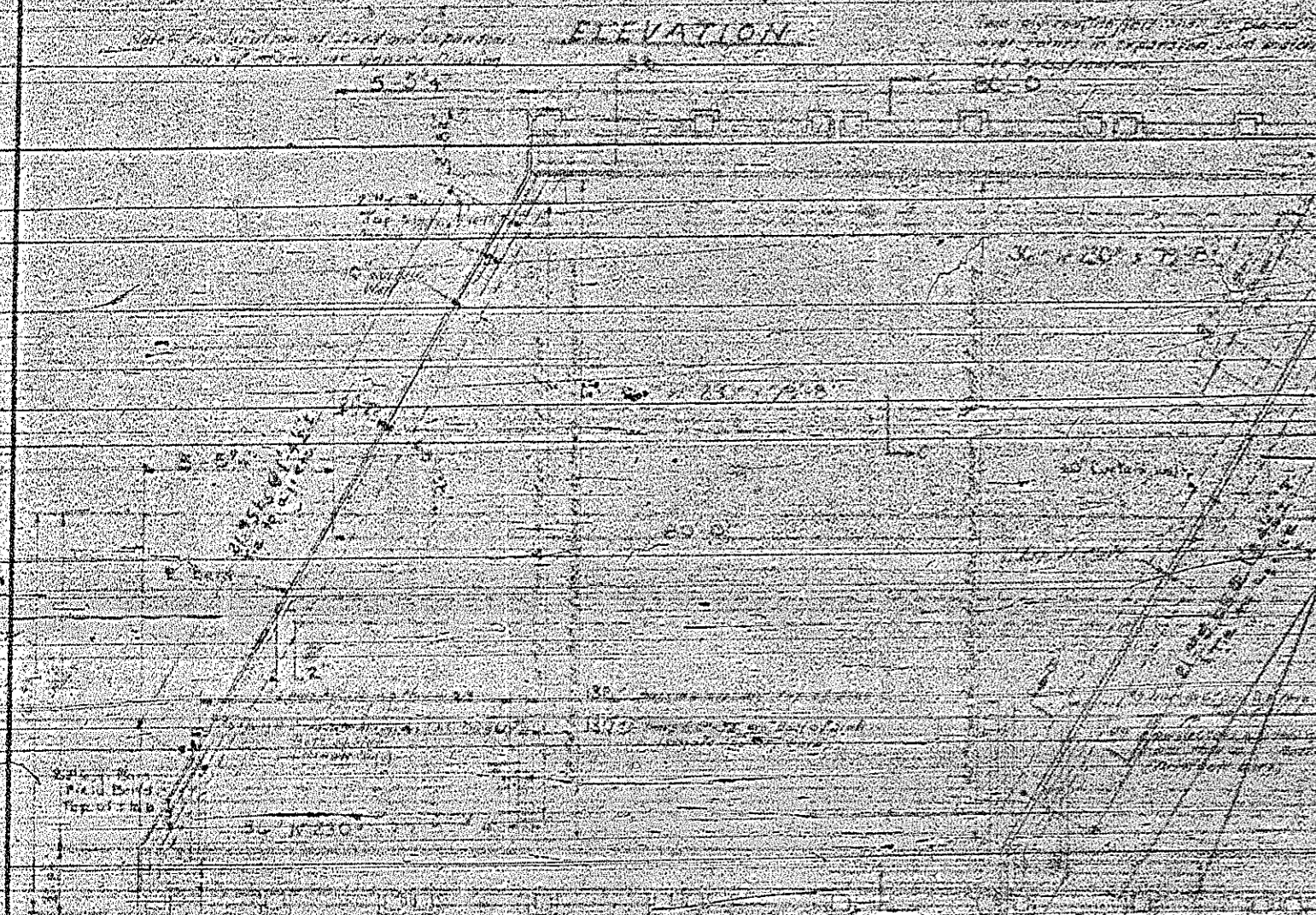
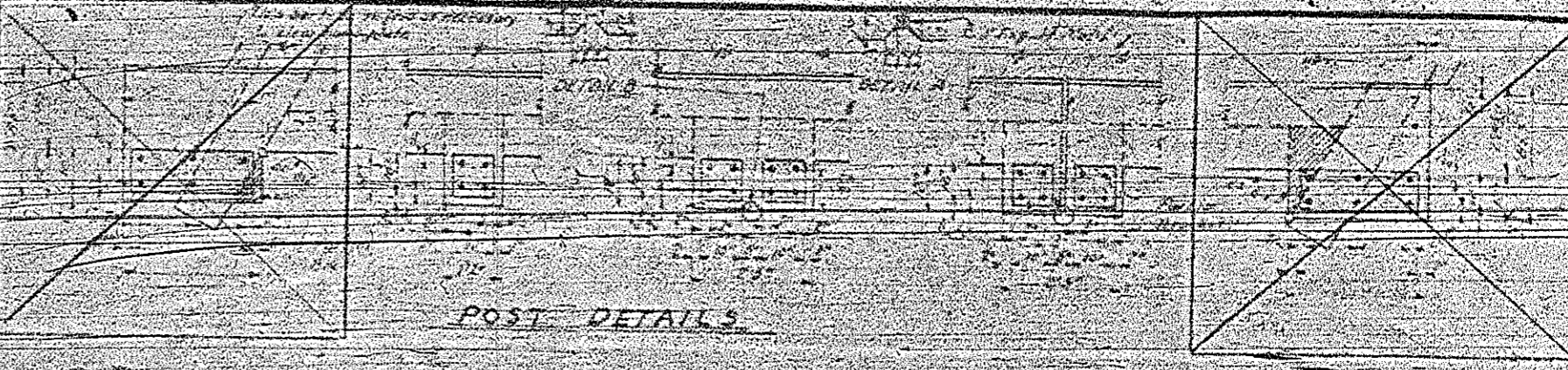
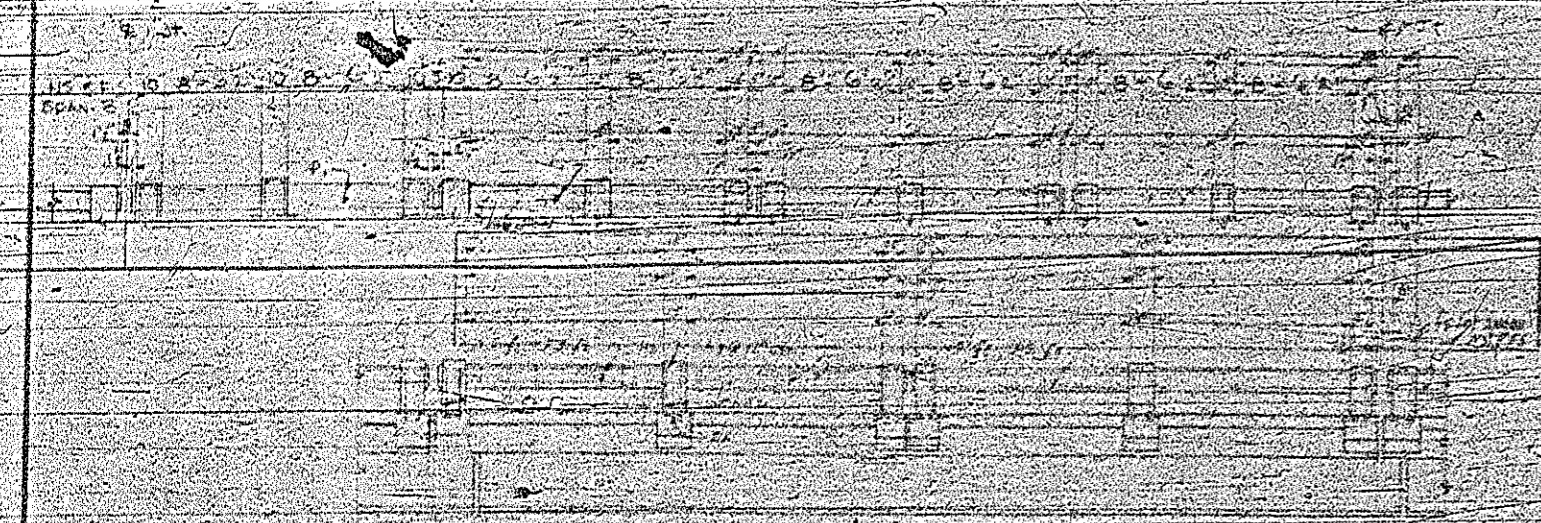


CLASS	MATERIAL	LEFT LANE		RIGHT LANE	
		CU. YARDS APPROX. LOSS	LIN. FT.	CU. YARDS APPROX. LOSS	LIN. FT.
SUPERSTRUCTURE	CONCRETE	107,200	34,141	107,200	34,141
	STEEL				
END BENT NO. 1	CONCRETE				
	STEEL				
BENT NO. 2	CONCRETE				
	STEEL				
END BENT NO. 2	CONCRETE				
	STEEL				
APPROACH CURBS	CONCRETE				
	STEEL				
TOTALS		204,400	68,282	204,400	68,282
TOTAL BILL OF MATERIALS					
SUPERSTRUCTURE	CONCRETE	107,200	34,141	107,200	34,141
	STEEL				
END BENT NO. 1	CONCRETE				
	STEEL				
BENT NO. 2	CONCRETE				
	STEEL				
END BENT NO. 2	CONCRETE				
	STEEL				
APPROACH CURBS	CONCRETE				
	STEEL				

PROJECT NO. B.13962
ROBEYSON-CUMBERLAND COUNTY
STATION: 74+00

STATE OF NORTH CAROLINA
STATE HIGHWAY COMMISSION
GENERAL DRAWING FOR
BRIDGES OVER R.R. OR
US 301 BETWEEN
LUMBERTON &
FAYETTEVILLE
DECEMBER 1955

No. B13962
 P.A. Proj. T-95-17031
 FOR RECORD REQUIREMENTS FOR
 HIGH STRENGTH BOLTS AND WELDS
 PROVISIONS

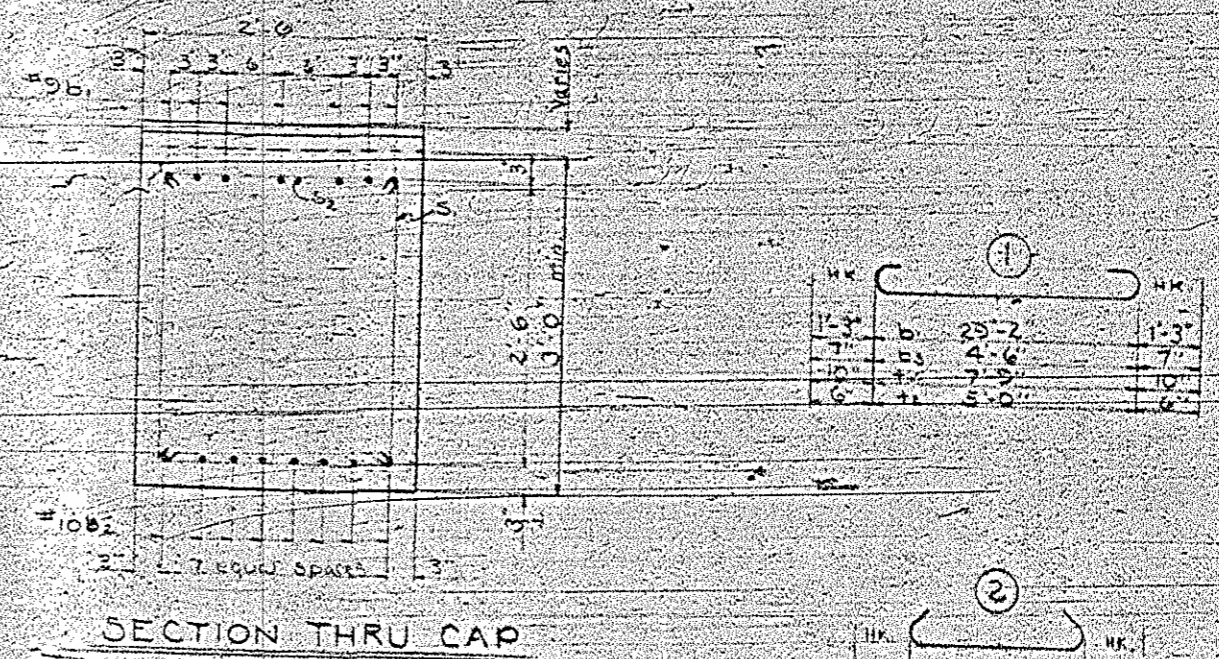


ONE BRIDGE TWO BARS USED

LIST OF MATERIAL FOR ONE 80' INTERIOR SPAN

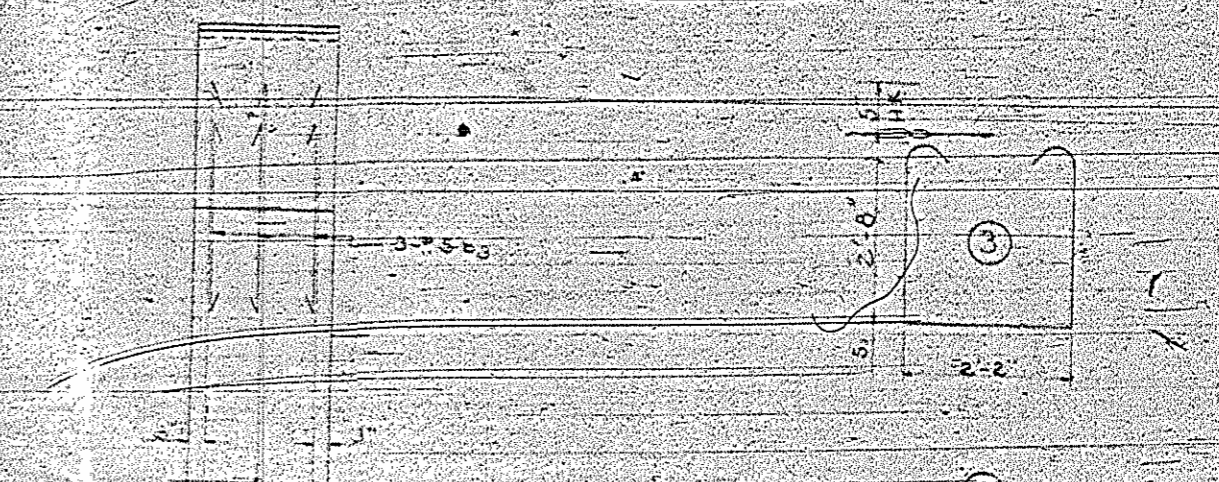
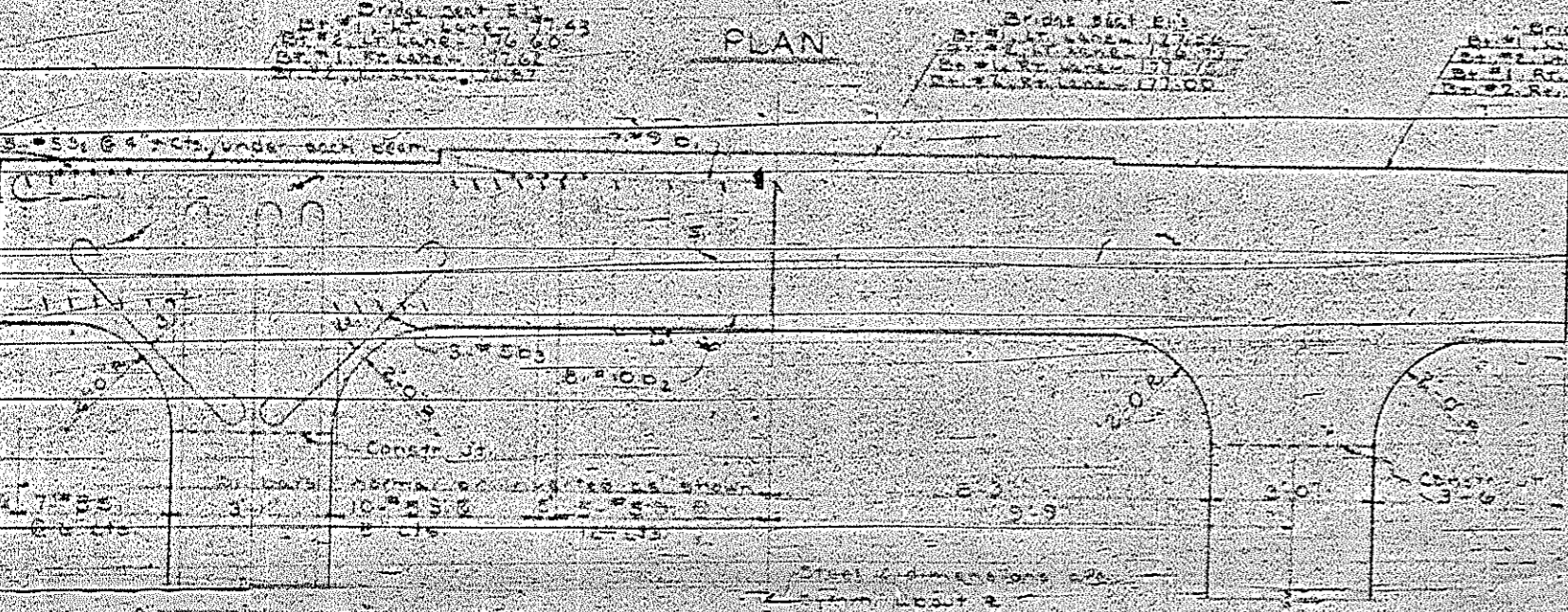
Item	Quantity	Weight	Volume	Remarks
1	1	42.5	1.0	
2	1	50	1.2	
3	1	56	1.4	
4	1	64	1.6	
5	1	74	1.8	
6	1	87	2.1	
7	1	103	2.5	
8	1	121	3.0	
9	1	141	3.6	
10	1	164	4.3	
11	1	190	5.2	
12	1	219	6.3	
13	1	251	7.6	
14	1	287	9.1	
15	1	327	10.8	
16	1	371	12.7	
17	1	419	14.8	
18	1	471	17.1	
19	1	527	19.7	
20	1	587	22.6	
21	1	651	25.8	
22	1	719	29.3	
23	1	791	33.1	
24	1	867	37.2	
25	1	947	41.6	
26	1	1031	46.3	
27	1	1119	51.3	
28	1	1211	56.6	
29	1	1307	62.2	
30	1	1407	68.1	
31	1	1511	74.3	
32	1	1619	80.8	
33	1	1731	87.6	
34	1	1847	94.7	
35	1	1967	102.1	
36	1	2091	110.0	
37	1	2219	118.2	
38	1	2351	126.8	
39	1	2487	135.8	
40	1	2627	145.2	
41	1	2771	155.0	
42	1	2919	165.2	
43	1	3071	175.9	
44	1	3227	187.1	
45	1	3387	198.8	
46	1	3551	211.0	
47	1	3719	223.7	
48	1	3891	236.9	
49	1	4067	250.6	
50	1	4247	264.8	
51	1	4431	279.5	
52	1	4619	294.7	
53	1	4811	310.4	
54	1	5007	326.6	
55	1	5207	343.3	
56	1	5411	360.5	
57	1	5619	378.2	
58	1	5831	396.4	
59	1	6047	415.1	
60	1	6267	434.3	
61	1	6491	454.0	
62	1	6719	474.2	
63	1	6951	494.9	
64	1	7187	516.1	
65	1	7427	537.8	
66	1	7671	560.0	
67	1	7919	582.7	
68	1	8171	605.9	
69	1	8427	629.6	
70	1	8687	653.8	
71	1	8951	678.5	
72	1	9219	703.7	
73	1	9491	729.4	
74	1	9767	755.6	
75	1	10047	782.3	
76	1	10331	809.5	
77	1	10619	837.2	
78	1	10911	865.4	
79	1	11207	894.1	
80	1	11507	923.3	
81	1	11811	953.0	
82	1	12119	983.2	
83	1	12431	1013.9	
84	1	12747	1045.1	
85	1	13067	1076.8	
86	1	13391	1109.0	
87	1	13719	1141.7	
88	1	14051	1174.9	
89	1	14387	1208.6	
90	1	14727	1242.8	
91	1	15071	1277.5	
92	1	15419	1312.7	
93	1	15771	1348.4	
94	1	16127	1384.6	
95	1	16487	1421.3	
96	1	16851	1458.5	
97	1	17219	1496.2	
98	1	17591	1534.4	
99	1	17967	1573.1	
100	1	18347	1612.3	

PROJECT NO. 813962
 ROBERSON COUNTY
 CUMBERLAND COUNTY
 STATION: 712+10.82 L1
 LT. OF RT. LANE
 SPAN C
 STATE OF NORTH CAROLINA
 STATE HIGHWAY COMMISSION
 STANDARD
 T-BEAM SUPERSTRUCTURE
 WITH R.C. FLOOR & RAIL
 ONE @ 20' 0" SPAN
 28' ROADWAY 2'-LL. 2" SKEW
 M.H.I. 1977

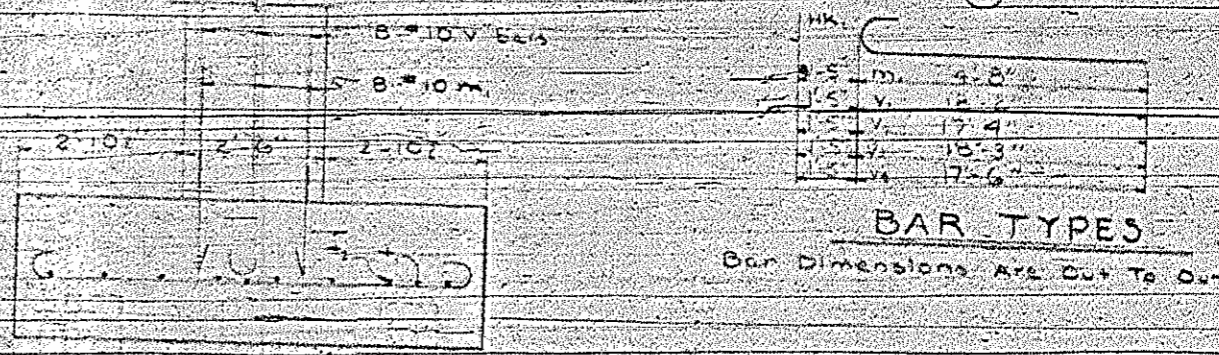
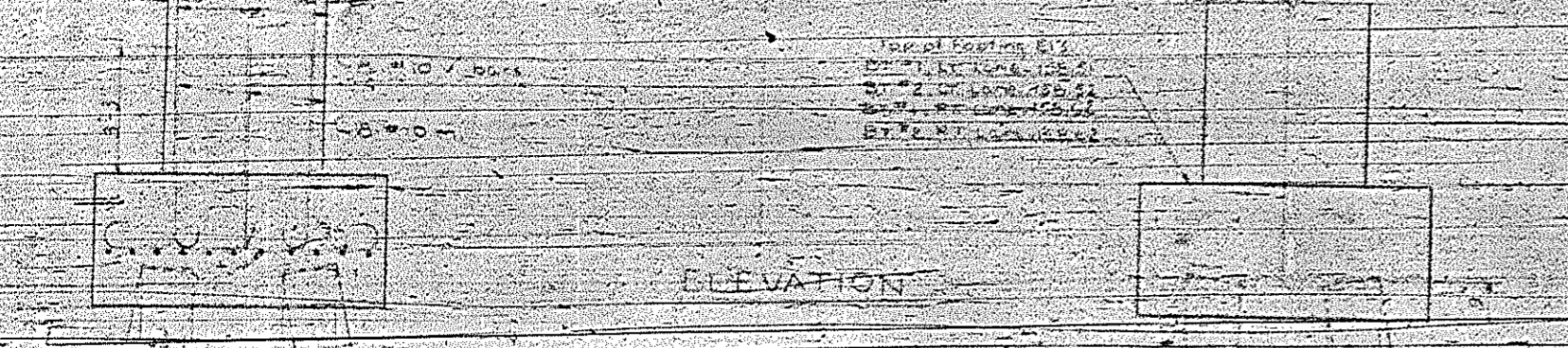


BILL OF MATERIAL
FOR ONE BENT ONLY
FOUR REQUIRED

BAR NO.	SIZE	TYPE	LENGTH	WEIGHT
b1	7	#3	31'-8"	754
b2	8	#0	29'-2"	566
b3	12	#5	5'-8"	87
m	16	#10	8'-0"	412
s1	13	#5	3'-4"	314
s2	20	#5	2'-3"	143
j	22	#7	1'-9"	463
Te	16	#4	6'-0"	64



REINFORCING STEEL	CLASS	NO.	TYPE	LENGTH	WEIGHT
BT#1	1 LT LANE	1	#10	8'-0"	348
BT#2	2 LT LANE	2	#10	4'-0"	174
BT#3	1 LT LANE	1	#10	4'-0"	174
BT#4	2 LT LANE	2	#10	4'-0"	348



REINFORCING STEEL	CLASS	NO.	TYPE	LENGTH	WEIGHT
BT#1	1 LT LANE	1	#10	8'-0"	348
BT#2	2 LT LANE	2	#10	4'-0"	174
BT#3	1 LT LANE	1	#10	4'-0"	174
BT#4	2 LT LANE	2	#10	4'-0"	348

CONCRETE DISMISSED ON PILES HAS BEEN DEDUCTED.

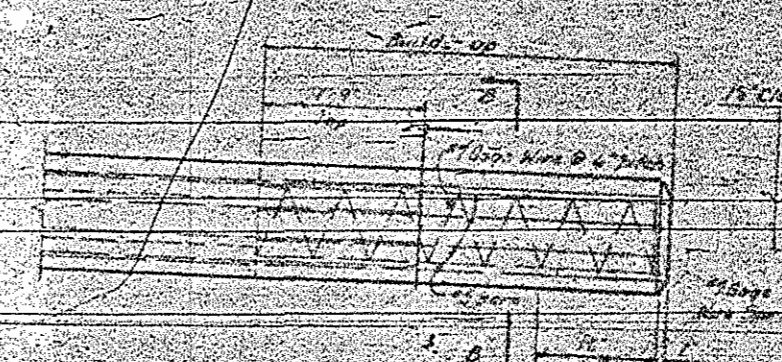
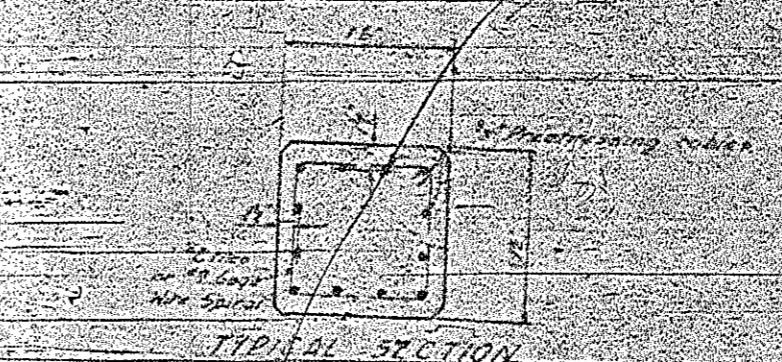
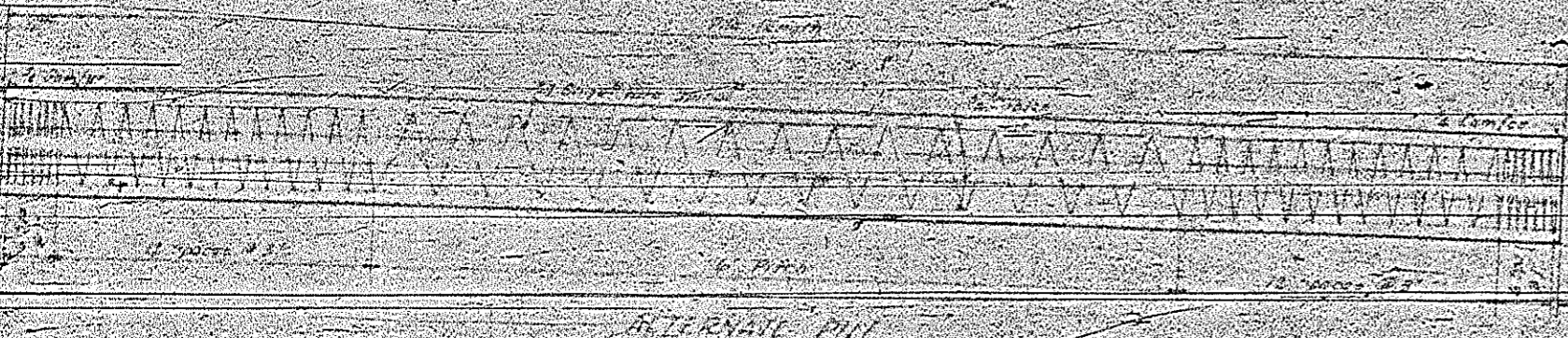
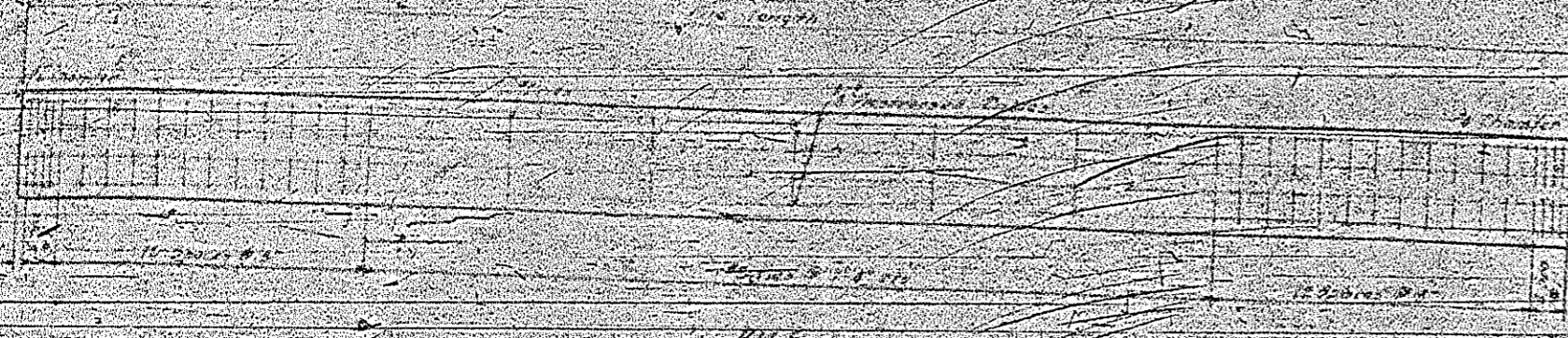
PROJECT NO. 8113962

ROBESON-CUMBERLAND COUNTY

STATION: 712+10.51

STATE OF NORTH CAROLINA
STATE HIGHWAY COMMISSION
INTERIOR BENT NO 142
LEFT & RIGHT LANE

NO.	DATE	REVISION
1	11/10/37	AS SHOWN



NOTES

In driving piles a method approved by the Engineer shall be used whereby the heads of the piles is not damaged.

All material and workmanship as per the Specifications of North Carolina State Highway, and the Special Provisions.

The contractor may use either 1/2" or 3/4" size wire mesh as shown.

Build up where necessary shall be done in accordance with the specifications except that the reinforcing steel required in the build up shall be included in the contract unit price per foot for the pile and not be paid for as pile driving steel.

ESTIMATE DATA:

Contract	1,000,000.00
Design	200,000.00
Station	240,000.00
Station	15,000.00
Station	180,000.00
Station	100.00

Devices for lifting the piles from the casting beds shall be approved by the Engineer. Where piles will be required to rise in the bridge inserts cast in the piles to receive threaded eye bolts or similar approved devices shall be used. Loops of cable cast in the pile and not to be removed except for piles for end bents and foundations which will not be exposed in view. The use of unapproved cranes or slings will be prohibited where this is practicable without the use of lifting devices cast in the piles. After eye bolts or other lifting means have been removed, the openings shall be repaired in a satisfactory manner before returning to the bridge site in order to obtain a uniform appearance. It shall not be necessary to remove loops of cable or other lifting devices in bents, abutments and foundations which will not be exposed in view.

NO.	DESCRIPTION	AMOUNT	UNIT	TOTAL
1
2
3
4
5
6
7
8
9
10

NO.	DESCRIPTION	AMOUNT	UNIT	TOTAL
1
2
3
4
5
6
7
8
9
10
11
12
13
14
15
16
17
18
19
20
21
22
23
24
25
26
27
28
29
30
31
32
33
34
35
36
37
38
39
40
41
42
43
44
45
46
47
48
49
50

Method of picking up piles
Refer to Part 2
Pick up points

PROJECT NO. 212304

EDMONSON, CAMPERLAND COUNTY

STATION 7+21.00

75' x 50' x 12" PILE DRIVING
SHEET 2 OF 10

STATE OF NORTH CAROLINA
STATE HIGHWAY COMMISSION

STANDARD
10" DIAMETER CONC
PILES

MAR 11 1937

SPECIAL	APPROVED BY	DATE
STANDARD	APPROVED BY	DATE

Revised for pile spacing
8/30/37 by J.A.D. (M.P.)

Revised for pick up points
8/30/37 by J.A.D. (M.P.)



ELEVATION

PROJECT 214362
FEDERAL AID
1955

DETAIL SHOWING CORRECT WORDING
NAME PLATE USING FOUR LINES



ELEVATION

PROJECT 214362
FEDERAL AID
1955

DETAIL SHOWING CORRECT WORDING
NAME PLATE USING TWO LINES

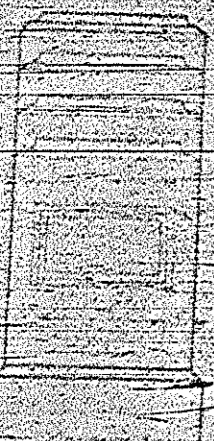
GENERAL NOTE

The name plates are required for each bridge and approach approaching the bridge. See location sketch.

The name plates are to be made of granite or marble. They shall be light gray in color and shall be of quality and free from all defects.

The name plates shall be mounted on a black vertical rectangular wooden post. The wording shall be in white and shall be in the following style:

The name plate of the State shall be complete in place and be installed in accordance with the following instructions:



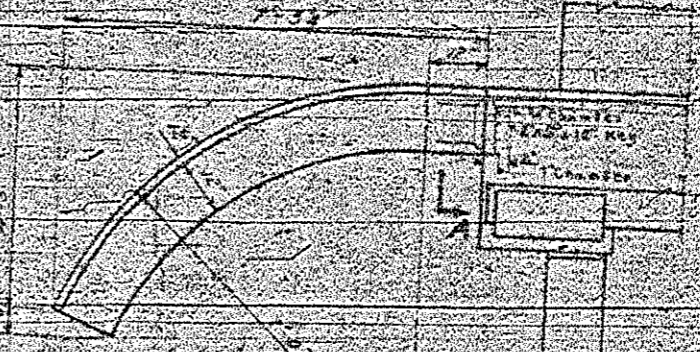
FOR BALLUSTER TYPE RAIL



FOR BAR TYPE RAIL

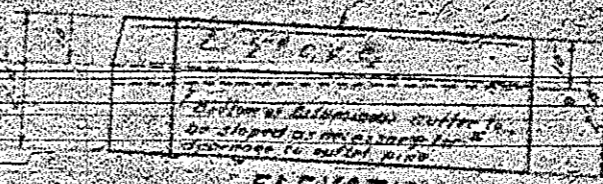
LOCATION DETAIL FOR NAME PLATES

NAME PLATES



PLAN

Shoulder line (roadway) to curb
Approach curb to be constructed on vertical curve or grade conforming to that of bridge curb.



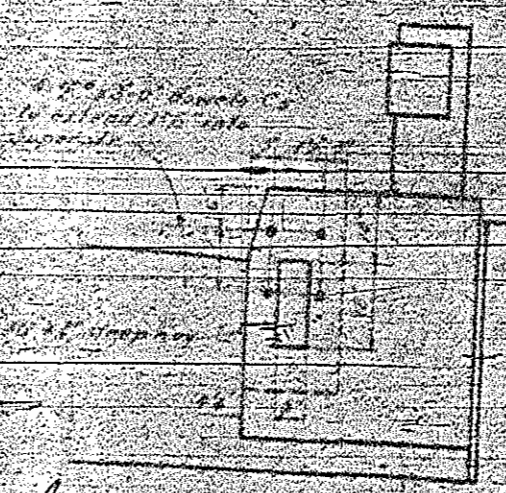
ELEVATION

STATES 47-47-55
750-50-20
1845-50-20
227-50-20
6-20-50

BILL OF MATERIAL FOR CURBS

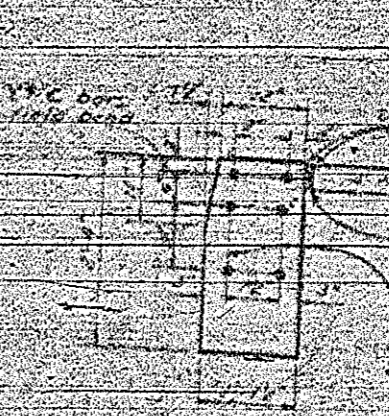
Bar No.	Size	Length	Weight
C-1	2" x 6"	21'	21
C-2	2" x 6"	21'	21
C-3	2" x 6"	21'	21
C-4	2" x 6"	21'	21
C-5	2" x 6"	21'	21
C-6	2" x 6"	21'	21
C-7	2" x 6"	21'	21
C-8	2" x 6"	21'	21
C-9	2" x 6"	21'	21
C-10	2" x 6"	21'	21
C-11	2" x 6"	21'	21
C-12	2" x 6"	21'	21
C-13	2" x 6"	21'	21
C-14	2" x 6"	21'	21
C-15	2" x 6"	21'	21
C-16	2" x 6"	21'	21
C-17	2" x 6"	21'	21
C-18	2" x 6"	21'	21
C-19	2" x 6"	21'	21
C-20	2" x 6"	21'	21
C-21	2" x 6"	21'	21
C-22	2" x 6"	21'	21
C-23	2" x 6"	21'	21
C-24	2" x 6"	21'	21
C-25	2" x 6"	21'	21
C-26	2" x 6"	21'	21
C-27	2" x 6"	21'	21
C-28	2" x 6"	21'	21
C-29	2" x 6"	21'	21
C-30	2" x 6"	21'	21
C-31	2" x 6"	21'	21
C-32	2" x 6"	21'	21
C-33	2" x 6"	21'	21
C-34	2" x 6"	21'	21
C-35	2" x 6"	21'	21
C-36	2" x 6"	21'	21
C-37	2" x 6"	21'	21
C-38	2" x 6"	21'	21
C-39	2" x 6"	21'	21
C-40	2" x 6"	21'	21
C-41	2" x 6"	21'	21
C-42	2" x 6"	21'	21
C-43	2" x 6"	21'	21
C-44	2" x 6"	21'	21
C-45	2" x 6"	21'	21
C-46	2" x 6"	21'	21
C-47	2" x 6"	21'	21
C-48	2" x 6"	21'	21
C-49	2" x 6"	21'	21
C-50	2" x 6"	21'	21
C-51	2" x 6"	21'	21
C-52	2" x 6"	21'	21
C-53	2" x 6"	21'	21
C-54	2" x 6"	21'	21
C-55	2" x 6"	21'	21
C-56	2" x 6"	21'	21
C-57	2" x 6"	21'	21
C-58	2" x 6"	21'	21
C-59	2" x 6"	21'	21
C-60	2" x 6"	21'	21
C-61	2" x 6"	21'	21
C-62	2" x 6"	21'	21
C-63	2" x 6"	21'	21
C-64	2" x 6"	21'	21
C-65	2" x 6"	21'	21
C-66	2" x 6"	21'	21
C-67	2" x 6"	21'	21
C-68	2" x 6"	21'	21
C-69	2" x 6"	21'	21
C-70	2" x 6"	21'	21
C-71	2" x 6"	21'	21
C-72	2" x 6"	21'	21
C-73	2" x 6"	21'	21
C-74	2" x 6"	21'	21
C-75	2" x 6"	21'	21
C-76	2" x 6"	21'	21
C-77	2" x 6"	21'	21
C-78	2" x 6"	21'	21
C-79	2" x 6"	21'	21
C-80	2" x 6"	21'	21
C-81	2" x 6"	21'	21
C-82	2" x 6"	21'	21
C-83	2" x 6"	21'	21
C-84	2" x 6"	21'	21
C-85	2" x 6"	21'	21
C-86	2" x 6"	21'	21
C-87	2" x 6"	21'	21
C-88	2" x 6"	21'	21
C-89	2" x 6"	21'	21
C-90	2" x 6"	21'	21
C-91	2" x 6"	21'	21
C-92	2" x 6"	21'	21
C-93	2" x 6"	21'	21
C-94	2" x 6"	21'	21
C-95	2" x 6"	21'	21
C-96	2" x 6"	21'	21
C-97	2" x 6"	21'	21
C-98	2" x 6"	21'	21
C-99	2" x 6"	21'	21
C-100	2" x 6"	21'	21

TO BE USED WITH 12" & 18" CURBS



SECTION A-A

END ELEVATION SHOWING KEY IN SUPERSTRUCTURE

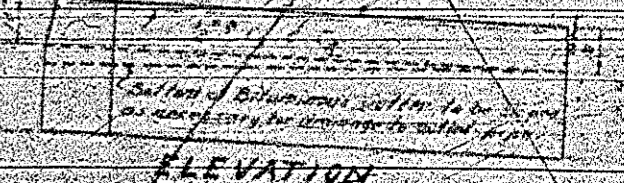


SECTION B-B



PLAN

Shoulder line (roadway) to curb
Approach curb to be constructed on vertical curve or grade conforming to that of bridge curb.



ELEVATION

BILL OF MATERIAL FOR CURBS

Bar No.	Size	Length	Weight
C-1	3" x 6"	21'	21
C-2	3" x 6"	21'	21
C-3	3" x 6"	21'	21
C-4	3" x 6"	21'	21
C-5	3" x 6"	21'	21
C-6	3" x 6"	21'	21
C-7	3" x 6"	21'	21
C-8	3" x 6"	21'	21
C-9	3" x 6"	21'	21
C-10	3" x 6"	21'	21
C-11	3" x 6"	21'	21
C-12	3" x 6"	21'	21
C-13	3" x 6"	21'	21
C-14	3" x 6"	21'	21
C-15	3" x 6"	21'	21
C-16	3" x 6"	21'	21
C-17	3" x 6"	21'	21
C-18	3" x 6"	21'	21
C-19	3" x 6"	21'	21
C-20	3" x 6"	21'	21
C-21	3" x 6"	21'	21
C-22	3" x 6"	21'	21
C-23	3" x 6"	21'	21
C-24	3" x 6"	21'	21
C-25	3" x 6"	21'	21
C-26	3" x 6"	21'	21
C-27	3" x 6"	21'	21
C-28	3" x 6"	21'	21
C-29	3" x 6"	21'	21
C-30	3" x 6"	21'	21
C-31	3" x 6"	21'	21
C-32	3" x 6"	21'	21
C-33	3" x 6"	21'	21
C-34	3" x 6"	21'	21
C-35	3" x 6"	21'	21
C-36	3" x 6"	21'	21
C-37	3" x 6"	21'	21
C-38	3" x 6"	21'	21
C-39	3" x 6"	21'	21
C-40	3" x 6"	21'	21
C-41	3" x 6"	21'	21
C-42	3" x 6"	21'	21
C-43	3" x 6"	21'	21
C-44	3" x 6"	21'	21
C-45	3" x 6"	21'	21
C-46	3" x 6"	21'	21
C-47	3" x 6"	21'	21
C-48	3" x 6"	21'	21
C-49	3" x 6"	21'	21
C-50	3" x 6"	21'	21
C-51	3" x 6"	21'	21
C-52	3" x 6"	21'	21
C-53	3" x 6"	21'	21
C-54	3" x 6"	21'	21
C-55	3" x 6"	21'	21
C-56	3" x 6"	21'	21
C-57	3" x 6"	21'	21
C-58	3" x 6"	21'	21
C-59	3" x 6"	21'	21
C-60	3" x 6"	21'	21
C-61	3" x 6"	21'	21
C-62	3" x 6"	21'	21
C-63	3" x 6"	21'	21
C-64	3" x 6"	21'	21
C-65	3" x 6"	21'	21
C-66	3" x 6"	21'	21
C-67	3" x 6"	21'	21
C-68	3" x 6"	21'	21
C-69	3" x 6"	21'	21
C-70	3" x 6"	21'	21
C-71	3" x 6"	21'	21
C-72	3" x 6"	21'	21
C-73	3" x 6"	21'	21
C-74	3" x 6"	21'	21
C-75	3" x 6"	21'	21
C-76	3" x 6"	21'	21
C-77	3" x 6"	21'	21
C-78	3" x 6"	21'	21
C-79	3" x 6"	21'	21
C-80	3" x 6"	21'	21
C-81	3" x 6"	21'	21
C-82	3" x 6"	21'	21
C-83	3" x 6"	21'	21
C-84	3" x 6"	21'	21
C-85	3" x 6"	21'	21
C-86	3" x 6"	21'	21
C-87	3" x 6"	21'	21
C-88	3" x 6"	21'	21
C-89	3" x 6"	21'	21
C-90	3" x 6"	21'	21
C-91	3" x 6"	21'	21
C-92	3" x 6"	21'	21
C-93	3" x 6"	21'	21
C-94	3" x 6"	21'	21
C-95	3" x 6"	21'	21
C-96	3" x 6"	21'	21
C-97	3" x 6"	21'	21
C-98	3" x 6"	21'	21
C-99	3" x 6"	21'	21
C-100	3" x 6"	21'	21

TO BE USED WITH 3" x 6" WALKS

PROJECT NO. 214362

COUNTY ROAD DEPARTMENT, ROSS CO. COUNTY

STATION 112+00

STATE OF NORTH CAROLINA
STATE HIGHWAY COMMISSION

STANDARD
APPROACH CURBS
AND
NAME PLATES

SEPT. 1953

NOTE: The material for curbs will not be measured and paid for as a separate item. The entire cost for curbs is to be included in the unit price bid for Steps A, B, and C.

Iron and bituminous surfacing of roads of bridges to be furnished and placed by Roadway Contractor.