



NC DEPARTMENT OF TRANSPORTATION  
 DIVISION OF HIGHWAYS  
 STRUCTURE MANAGEMENT UNIT

ATTENTION: **UPDATED NBL CLEARANCE SKETCH, SBL CLEARANCE SKETCH AND SUBSTRUCTURE SKETCH**

# Structure Safety Report

## Routine Element Inspection - Contract

INSPECTION DATE: 05/09/2019

DIVISION: 6 COUNTY: ROBESON STRUCTURE NUMBER: 770152 FREQUENCY: 24 MONTHS

FACILITY CARRIED: SR1758 MILE POST: \_\_\_\_\_

LOCATION: 0.7 MI.W.JCT.SR1759

FEATURE INTERSECTED: I95

LATITUDE: 34° 46' 12.12" LONGITUDE: 78° 59' 45.87"

SUPERSTRUCTURE: RC FLOOR ON I-BEAMS

SUBSTRUCTURE: E.BTS&INT.BTS:RC CAP/PPC PILES @ 7'CTS.

SPANS: 5 SPANS. SEE SPAN PROFILE SHEET FOR SPAN DETAILS

FRACTURE CRITICAL     TEMPORARY SHORING     SCOUR CRITICAL     SCOUR PLAN OF ACTION

NBI GRADES: DECK 8 SUPERSTRUCTURE 6 SUBSTRUCTURE 6 CULVERT N

POSTED SV: Not Posted POSTED TTST: Not Posted

OTHER SIGNS PRESENT: 3 DELINEATORS



COVER PHOTO LOOKING EAST

Sign noticed issued for	Number Required
<u>NO</u> WEIGHT LIMIT	<u>0</u>
<u>NO</u> DELINEATORS	<u>0</u>
<u>NO</u> NARROW BRIDGE	<u>0</u>
<u>NO</u> ONE LANE BRIDGE	<u>0</u>
<u>NO</u> LOW CLEARANCE	<u>0</u>

DIRECTION OF INSPECTION W-E

DIRECTION MATCHES PLANS NO PLANS

INSPECTED BY John T. Eubanks	SIGNATURE <i>John T. Eubanks</i>	ASSISTED BY Felton W. Berger
---------------------------------	-------------------------------------	---------------------------------

# Structure Element Scoring

Structure Number: 770152

Inspection Date 5/9/2019

Element Number	Parent Number	Element Name	Location	Total Quantity	Level 1 Quantity	Level 2 Quantity	Level 3 Quantity	Level 4 Quantity
12	0	Reinforced Concrete Deck	Deck	10428	10424	0	4	0
107	0	Steel Open Girder/Beam	Beam	1324	0	1324	0	0
515	107	Steel Protective Coating	Beam	13200	9720	3480	0	0
215	0	Reinforced Concrete Abutment	Abutments	80	75	1	4	0
225	0	Steel Pile	Piles and Columns	10	10	0	0	0
226	0	Prestressed Concrete Pile	Piles and Columns	24	24	0	0	0
234	0	Reinforced Concrete Pier Cap	Caps	240	240	0	0	0
301	0	Pourable Joint Seal	Expansion Joints	31	31	0	0	0
302	0	Compression Joint Seal	Expansion Joints	124	124	0	0	0
316	0	Other Bearings	Bearing Device	40	0	40	0	0
515	316	Steel Protective Coating	Bearing Device	80	0	0	80	0
331	0	Reinforced Concrete Bridge Railing	Bridge Rail	664	661	3	0	0

# Summary of Maintenance Needs

Maintenance By Defect

Structure Number: 770152

Inspection Date: 05/09/2019

<b>MMS Code</b>	<b>Element Name</b>	<b>Defect Name</b>	<b>Recommended Quantity</b>
3326	Reinforced Concrete Deck	Delamination/Spall	3 Square Feet
3350	Reinforced Concrete Abutment	Delamination/Spall	3 Feet
3318	Reinforced Concrete Bridge Railing	Delamination/Spall	3 Feet
3342	Steel Protective Coating	Peeling/Bubbling/Cracking (steel Protective Coatings)	3480 Square Feet
3342	Steel Protective Coating	Effectiveness (Steel Protective Coatings)	80 Square Feet

## Element Structure Maintenance Quantities

Structure Number: 770152

Inspection Date 05/09/2019

Location	MMS Code	Description	Maint Quantity	Total Quantity	Severe Quantity	Poor Quantity	Fair Quantity	Good Quantity
Abutments	3350	Maintenance of Concrete Wings and Wall	3	80	0	4	1	75
Beam	3314	Maintenance Steel Superstructure Components	0	1324	0	0	1324	0
Beam	3342	Clean and Paint Steel	3480	13200	0	0	3480	9720
Bearing Device	3334	Bridge Bearing	0	40	0	0	40	0
Bearing Device	3342	Clean and Paint Steel	80	80	0	80	0	0
Bridge Rail	3318	Maintenance of Concrete Bridge Rail	3	664	0	0	3	661
Caps	3348	Maintenance of Concrete Substructure	0	240	0	0	0	240
Deck	3326	Maintenance of Concrete Deck	3	10428	0	4	0	10424
Expansion Joints	3310	Maintenance of Standard Bridge Expansion Joints	0	155	0	0	0	155
Piles and Columns	3348	Maintenance of Concrete Substructure	0	24	0	0	0	24
Piles and Columns	3354	Maintenance of Steel Substructure Components	0	10	0	0	0	10

## Element Condition and Maintenance Data

Structure Number: 770152

Inspection Date: 05/09/2019

### Span 1 Deck Reinforced Concrete Deck

Element Number	Element Name	Total Qty	CS1 Qty	CS2 Qty	CS3 Qty	CS4 Qty
12	Reinforced Concrete Deck	2,001	2,000	0	1	0 Square Feet

Element Number	Defect Type	Defect Description	CS	CS Qty	Maint Qty
12	Delamination/Spall	BEAM 1 EXTERIOR END DIAPHRAGM SPALL 8" HIGH X 6" WIDE X 4" DEEP WITH 3" EXPOSED REBAR	3	1	1 Square Feet

**General Comments**

5

### Span 1 Beam 1 Plate Girder

Element Number	Element Name	Total Qty	CS1 Qty	CS2 Qty	CS3 Qty	CS4 Qty
107	Steel Open Girder/Beam	63	0	63	0	0 Feet
515	Steel Protective Coating	630	480	150	0	0 Square Feet

Element Number	Defect Type	Defect Description	CS	CS Qty	Maint Qty
107	Corrosion	PAINT PEELING WITH SURFACE RUST , NO SECTION LOSS	2	63	Feet
515	Peeling/Bubbling/Cracking (steel Protective Coatings)	PAINT PEELING WITH SURFACE RUST ON FLANGES AND WEBS	2	150	150 Square Feet

**General Comments**

### Span 1 Beam 2 Plate Girder

Element Number	Element Name	Total Qty	CS1 Qty	CS2 Qty	CS3 Qty	CS4 Qty
107	Steel Open Girder/Beam	63	0	63	0	0 Feet
515	Steel Protective Coating	630	480	150	0	0 Square Feet

Element Number	Defect Type	Defect Description	CS	CS Qty	Maint Qty
107	Corrosion	PAINT PEELING WITH SURFACE RUST , NO SECTION LOSS	2	63	Feet
515	Peeling/Bubbling/Cracking (steel Protective Coatings)	PAINT PEELING WITH SURFACE RUST IN FLANGES AND WEBS	2	150	150 Square Feet

**General Comments**

SPALL MEASURING 8" IN DIAMETER BY 1" DEEP LOCATED IN THE CONCRETE BUILD UP IN SPAN 1 BAY 2 OVER BENT 1.

### Span 1 Beam 3 Plate Girder

Element Number	Element Name	Total Qty	CS1 Qty	CS2 Qty	CS3 Qty	CS4 Qty
107	Steel Open Girder/Beam	63	0	63	0	0 Feet
515	Steel Protective Coating	630	480	150	0	0 Square Feet

Element Number	Defect Type	Defect Description	CS	CS Qty	Maint Qty
----------------	-------------	--------------------	----	--------	-----------

Structure Number: 770152

Inspection Date: 05/09/2019

107	Corrosion	PAINTE PEELING WITH SURFACE RUST , NO SECTION LOSS	2	63	Feet
515	Peeling/Bubbling/Cracking (steel Protective Coatings)	PAINTE PEELING WITH SURFACE RUST	2	150	150 Square Feet

**General Comments**

**Span 1 Beam 4**

**Plate Girder**

Element Number	Element Name	Total Qty	CS1 Qty	CS2 Qty	CS3 Qty	CS4 Qty
107	Steel Open Girder/Beam	63	0	63	0	0 Feet
515	Steel Protective Coating	630	480	150	0	0 Square Feet

Element Number	Defect Type	Defect Description	CS	CS Qty	Maint Qty
107	Corrosion	PAINTE PEELING WITH SURFACE RUST , NO SECTION LOSS	2	63	Feet
515	Peeling/Bubbling/Cracking (steel Protective Coatings)	PAINTE PEELING WITH SURFACE RUST IN FLANGES AND WEBS	2	150	150 Square Feet

**General Comments**

**Span 1 Near Bearing**

**Other Bearing**

Element Number	Element Name	Total Qty	CS1 Qty	CS2 Qty	CS3 Qty	CS4 Qty
316	Other Bearings	1	0	1	0	0 Each
515	Steel Protective Coating	2	0	0	2	0 Square Feet

Element Number	Defect Type	Defect Description	CS	CS Qty	Maint Qty
316	Corrosion	SURFACE RUST WITH NO SECTION LOSS	2	1	Each
515	Effectiveness (Steel Protective Coatings)	COATING NOT EFFECTIVE	3	2	2 Square Feet

**General Comments**

**Span 1 Far Bearing**

**Other Bearing**

Element Number	Element Name	Total Qty	CS1 Qty	CS2 Qty	CS3 Qty	CS4 Qty
316	Other Bearings	1	0	1	0	0 Each
515	Steel Protective Coating	2	0	0	2	0 Square Feet

Element Number	Defect Type	Defect Description	CS	CS Qty	Maint Qty
316	Corrosion	RUST WITH NO SECTION LOSS	2	1	Each
515	Effectiveness (Steel Protective Coatings)	COATING NOT EFFECTIVE	3	2	2 Square Feet

**General Comments**

**Span 1 Near Bearing****Other Bearing**

Element Number	Element Name	Total Qty	CS1 Qty	CS2 Qty	CS3 Qty	CS4 Qty	
316	Other Bearings	1	0	1	0	0	Each
515	Steel Protective Coating	2	0	0	2	0	Square Feet

Element Number	Defect Type	Defect Description	CS	CS Qty	Maint Qty	
316	Corrosion	RUST WITH NO SECTION LOSS	2	1		Each
515	Effectiveness (Steel Protective Coatings)	COATING NOT EFFECTIVE	3	2	2	Square Feet

**General Comments****Span 1 Far Bearing****Other Bearing**

Element Number	Element Name	Total Qty	CS1 Qty	CS2 Qty	CS3 Qty	CS4 Qty	
316	Other Bearings	1	0	1	0	0	Each
515	Steel Protective Coating	2	0	0	2	0	Square Feet

Element Number	Defect Type	Defect Description	CS	CS Qty	Maint Qty	
316	Corrosion	RUST WITH NO SECTION LOSS	2	1		Each
515	Effectiveness (Steel Protective Coatings)	COATING NOT EFFECTIVE	3	2	2	Square Feet

**General Comments****Span 1 Near Bearing****Other Bearing**

Element Number	Element Name	Total Qty	CS1 Qty	CS2 Qty	CS3 Qty	CS4 Qty	
316	Other Bearings	1	0	1	0	0	Each
515	Steel Protective Coating	2	0	0	2	0	Square Feet

Element Number	Defect Type	Defect Description	CS	CS Qty	Maint Qty	
316	Corrosion	RUST WITH NO SECTION LOSS	2	1		Each
515	Effectiveness (Steel Protective Coatings)	COATING NOT EFFECTIVE	3	2	2	Square Feet

**General Comments****Span 1 Far Bearing****Other Bearing**

Element Number	Element Name	Total Qty	CS1 Qty	CS2 Qty	CS3 Qty	CS4 Qty	
316	Other Bearings	1	0	1	0	0	Each
515	Steel Protective Coating	2	0	0	2	0	Square Feet

Element Number	Defect Type	Defect Description	CS	CS Qty	Maint Qty	
316	Corrosion	RUST WITH NO SECTION LOSS	2	1		Each
515	Effectiveness (Steel Protective Coatings)	COATING NOT EFFECTIVE	3	2	2	Square Feet

**General Comments****Span 1 Near Bearing****Other Bearing**

Element Number	Element Name	Total Qty	CS1 Qty	CS2 Qty	CS3 Qty	CS4 Qty	
316	Other Bearings	1	0	1	0	0	Each
515	Steel Protective Coating	2	0	0	2	0	Square Feet

Element Number	Defect Type	Defect Description	CS	CS Qty	Maint Qty	
316	Corrosion	RUST WITH NO SECTION LOSS	2	1		Each
515	Effectiveness (Steel Protective Coatings)	COATING NOT EFFECTIVE	3	2	2	Square Feet

**General Comments****Span 1 Far Bearing****Other Bearing**

Element Number	Element Name	Total Qty	CS1 Qty	CS2 Qty	CS3 Qty	CS4 Qty	
316	Other Bearings	1	0	1	0	0	Each
515	Steel Protective Coating	2	0	0	2	0	Square Feet

Element Number	Defect Type	Defect Description	CS	CS Qty	Maint Qty	
316	Corrosion	RUST WITH NO SECTION LOSS	2	1		Each
515	Effectiveness (Steel Protective Coatings)	COATING NOT EFFECTIVE	3	2	2	Square Feet

**General Comments****Span 2 Deck****Reinforced Concrete Deck**

Element Number	Element Name	Total Qty	CS1 Qty	CS2 Qty	CS3 Qty	CS4 Qty	
12	Reinforced Concrete Deck	2,142	2,142	0	0	0	Square Feet

Element Number	Defect Type	Defect Description	CS	CS Qty	Maint Qty	
----------------	-------------	--------------------	----	--------	-----------	--

**General Comments****Span 2 Beam 1****Plate Girder**

Element Number	Element Name	Total Qty	CS1 Qty	CS2 Qty	CS3 Qty	CS4 Qty	
107	Steel Open Girder/Beam	67	0	67	0	0	Feet
515	Steel Protective Coating	680	500	180	0	0	Square Feet

Element Number	Defect Type	Defect Description	CS	CS Qty	Maint Qty	
107	Corrosion	PAIN T PEELING WITH SURFACE RUST	2	67		Feet
515	Peeling/Bubbling/Cracking (steel Protective	PAIN T PEELING WITH SURFACE RUST ON FLANGES AND WEBS	2	180	180	Square Feet



Coatings)

**General Comments**

**Span 2** **Beam 2**  
**Plate Girder**

Element Number	Element Name	Total Qty	CS1 Qty	CS2 Qty	CS3 Qty	CS4 Qty
107	Steel Open Girder/Beam	67	0	67	0	0 Feet
515	Steel Protective Coating	680	500	180	0	0 Square Feet

Element Number	Defect Type	Defect Description	CS	CS Qty	Maint Qty
107	Corrosion	PAINT PEELING WITH SURFACE RUST ON FLANGES AND WEBS	2	67	Feet
515	Peeling/Bubbling/Cracking (steel Protective Coatings)	PAINT PEELING WITH SURFACE RUST ON FLANGES AND WEBS	2	180	180 Square Feet

**General Comments**

6

**Span 2** **Beam 3**  
**Plate Girder**

Element Number	Element Name	Total Qty	CS1 Qty	CS2 Qty	CS3 Qty	CS4 Qty
107	Steel Open Girder/Beam	67	0	67	0	0 Feet
515	Steel Protective Coating	680	500	180	0	0 Square Feet

Element Number	Defect Type	Defect Description	CS	CS Qty	Maint Qty
107	Corrosion	PAINT PEELING WITH SURFACE RUST ON FLANGES AND WEBS	2	67	Feet
515	Peeling/Bubbling/Cracking (steel Protective Coatings)	PAINT PEELING WITH SURFACE RUST ON FLANGES AND WEBS	2	180	180 Square Feet

**General Comments**

**Span 2** **Beam 4**  
**Plate Girder**

Element Number	Element Name	Total Qty	CS1 Qty	CS2 Qty	CS3 Qty	CS4 Qty
107	Steel Open Girder/Beam	67	0	67	0	0 Feet
515	Steel Protective Coating	680	500	180	0	0 Square Feet

Element Number	Defect Type	Defect Description	CS	CS Qty	Maint Qty
107	Corrosion	PAINT PEELING WITH SURFACE RUST ON FLANGES AND WEBS	2	67	Feet
515	Peeling/Bubbling/Cracking (steel Protective Coatings)	PAINT PEELING WITH SURFACE RUST ON FLANGES AND WEBS	2	180	180 Square Feet

**General Comments**

**Span 2 Left Bridge Rail****Concrete Railing**

Element Number	Element Name	Total Qty	CS1 Qty	CS2 Qty	CS3 Qty	CS4 Qty
331	Reinforced Concrete Bridge Railing	68	66	2	0	0 Feet

Element Number	Defect Type	Defect Description	CS	CS Qty	Maint Qty
331	Delamination/Spall	6" DIA. CORNER SPALL 2 LOCATIONS ABOVE S.B. TRAVEL LANES	2	2	2 Feet

General Comments

**Span 2 Right Bridge Rail****Concrete Railing**

Element Number	Element Name	Total Qty	CS1 Qty	CS2 Qty	CS3 Qty	CS4 Qty
331	Reinforced Concrete Bridge Railing	68	67	1	0	0 Feet

Element Number	Defect Type	Defect Description	CS	CS Qty	Maint Qty
331	Delamination/Spall	RAIL POST # 4 SPALL 4" HIGH X 2" WIDE X 1" DEEP WITH EXPOSED REBAR	2	1	1 Feet

General Comments

**Span 2 Near Bearing****Other Bearing**

Element Number	Element Name	Total Qty	CS1 Qty	CS2 Qty	CS3 Qty	CS4 Qty
316	Other Bearings	1	0	1	0	0 Each
515	Steel Protective Coating	2	0	0	2	0 Square Feet

Element Number	Defect Type	Defect Description	CS	CS Qty	Maint Qty
316	Corrosion	RUST WITH NO SECTION LOSS	2	1	Each
515	Effectiveness (Steel Protective Coatings)	COATING NOT EFFECTIVE	3	2	2 Square Feet

General Comments

**Span 2 Far Bearing****Other Bearing**

Element Number	Element Name	Total Qty	CS1 Qty	CS2 Qty	CS3 Qty	CS4 Qty
316	Other Bearings	1	0	1	0	0 Each
515	Steel Protective Coating	2	0	0	2	0 Square Feet

Element Number	Defect Type	Defect Description	CS	CS Qty	Maint Qty
316	Corrosion	RUST WITH NO SECTION LOSS	2	1	Each
515	Effectiveness (Steel Protective Coatings)	COATING NOT EFFECTIVE	3	2	2 Square Feet

General Comments

**Span 2 Near Bearing****Other Bearing**

Element Number	Element Name	Total Qty	CS1 Qty	CS2 Qty	CS3 Qty	CS4 Qty	
316	Other Bearings	1	0	1	0	0	Each
515	Steel Protective Coating	2	0	0	2	0	Square Feet

Element Number	Defect Type	Defect Description	CS	CS Qty	Maint Qty	
316	Corrosion	RUST WITH NO SECTION LOSS	2	1		Each
515	Effectiveness (Steel Protective Coatings)	COATING NOT EFFECTIVE	3	2	2	Square Feet

**General Comments****Span 2 Far Bearing****Other Bearing**

Element Number	Element Name	Total Qty	CS1 Qty	CS2 Qty	CS3 Qty	CS4 Qty	
316	Other Bearings	1	0	1	0	0	Each
515	Steel Protective Coating	2	0	0	2	0	Square Feet

Element Number	Defect Type	Defect Description	CS	CS Qty	Maint Qty	
316	Corrosion	RUST WITH NO SECTION LOSS	2	1		Each
515	Effectiveness (Steel Protective Coatings)	COATING NOT EFFECTIVE	3	2	2	Square Feet

**General Comments****Span 2 Near Bearing****Other Bearing**

Element Number	Element Name	Total Qty	CS1 Qty	CS2 Qty	CS3 Qty	CS4 Qty	
316	Other Bearings	1	0	1	0	0	Each
515	Steel Protective Coating	2	0	0	2	0	Square Feet

Element Number	Defect Type	Defect Description	CS	CS Qty	Maint Qty	
316	Corrosion	RUST WITH NO SECTION LOSS	2	1		Each
515	Effectiveness (Steel Protective Coatings)	COATING NOT EFFECTIVE	3	2	2	Square Feet

**General Comments****Span 2 Far Bearing****Other Bearing**

Element Number	Element Name	Total Qty	CS1 Qty	CS2 Qty	CS3 Qty	CS4 Qty	
316	Other Bearings	1	0	1	0	0	Each
515	Steel Protective Coating	2	0	0	2	0	Square Feet

Element Number	Defect Type	Defect Description	CS	CS Qty	Maint Qty	
316	Corrosion	RUST WITH NO SECTION LOSS	2	1		Each
515	Effectiveness (Steel Protective Coatings)	COATING NOT EFFECTIVE	3	2	2	Square Feet

**General Comments****Span 2 Near Bearing****Other Bearing**

Element Number	Element Name	Total Qty	CS1 Qty	CS2 Qty	CS3 Qty	CS4 Qty
316	Other Bearings	1	0	1	0	0 Each
515	Steel Protective Coating	2	0	0	2	0 Square Feet

Element Number	Defect Type	Defect Description	CS	CS Qty	Maint Qty
316	Corrosion	RUST WITH NO SECTION LOSS	2	1	Each
515	Effectiveness (Steel Protective Coatings)	COATING NOT EFFECTIVE	3	2	2 Square Feet

**General Comments****Span 2 Far Bearing****Other Bearing**

Element Number	Element Name	Total Qty	CS1 Qty	CS2 Qty	CS3 Qty	CS4 Qty
316	Other Bearings	1	0	1	0	0 Each
515	Steel Protective Coating	2	0	0	2	0 Square Feet

Element Number	Defect Type	Defect Description	CS	CS Qty	Maint Qty
316	Corrosion	RUST WITH NO SECTION LOSS	2	1	Each
515	Effectiveness (Steel Protective Coatings)	COATING NOT EFFECTIVE	3	2	2 Square Feet

**General Comments****Span 3 Deck****Reinforced Concrete Deck**

Element Number	Element Name	Total Qty	CS1 Qty	CS2 Qty	CS3 Qty	CS4 Qty
12	Reinforced Concrete Deck	2,142	2,141	0	1	0 Square Feet

Element Number	Defect Type	Defect Description	CS	CS Qty	Maint Qty
12	Delamination/Spall	LEFT DECK OVERHANG SPALL 8" DIAMETER X 1" DEEP WITH EXPOSED REBAR NEAR BENT 2	3	1	1 Square Feet

**General Comments****Span 3 Beam 1****Plate Girder**

Element Number	Element Name	Total Qty	CS1 Qty	CS2 Qty	CS3 Qty	CS4 Qty
107	Steel Open Girder/Beam	67	0	67	0	0 Feet
515	Steel Protective Coating	680	500	180	0	0 Square Feet

Element Number	Defect Type	Defect Description	CS	CS Qty	Maint Qty
107	Corrosion	PAINT PEELING WITH SURFACE RUST IN FLANGES AND WEBS	2	67	Feet
515	Peeling/Bubbling/Cracking (steel Protective	PAINT PEELING WITH SURFACE RUST IN FLANGES AND WEBS	2	180	180 Square Feet

Coatings)

**General Comments****Span 3** **Beam 2****Plate Girder**

Element Number	Element Name	Total Qty	CS1 Qty	CS2 Qty	CS3 Qty	CS4 Qty
107	Steel Open Girder/Beam	67	0	67	0	0 Feet
515	Steel Protective Coating	680	500	180	0	0 Square Feet

Element Number	Defect Type	Defect Description	CS	CS Qty	Maint Qty
107	Corrosion	PAINT PEELING WITH SURFACE RUST IN FLANGES AND WEBS	2	67	Feet
515	Peeling/Bubbling/Cracking (steel Protective Coatings)	PAINT PEELING WITH SURFACE RUST IN FLANGES AND WEBS	2	180	180 Square Feet

**General Comments****Span 3** **Beam 3****Plate Girder**

Element Number	Element Name	Total Qty	CS1 Qty	CS2 Qty	CS3 Qty	CS4 Qty
107	Steel Open Girder/Beam	67	0	67	0	0 Feet
515	Steel Protective Coating	680	500	180	0	0 Square Feet

Element Number	Defect Type	Defect Description	CS	CS Qty	Maint Qty
107	Corrosion	PAINT PEELING WITH SURFACE RUST IN FLANGES AND WEBS	2	67	Feet
515	Peeling/Bubbling/Cracking (steel Protective Coatings)	PAINT PEELING WITH SURFACE RUST IN FLANGES AND WEBS	2	180	180 Square Feet

**General Comments****Span 3** **Beam 4****Plate Girder**

Element Number	Element Name	Total Qty	CS1 Qty	CS2 Qty	CS3 Qty	CS4 Qty
107	Steel Open Girder/Beam	67	0	67	0	0 Feet
515	Steel Protective Coating	680	500	180	0	0 Square Feet

Element Number	Defect Type	Defect Description	CS	CS Qty	Maint Qty
107	Corrosion	PAINT PEELING WITH SURFACE RUST IN FLANGES AND WEBS	2	67	Feet
515	Peeling/Bubbling/Cracking (steel Protective Coatings)	PAINT PEELING WITH SURFACE RUST IN FLANGES AND WEBS	2	180	180 Square Feet

**General Comments**

**Span 3 Near Bearing**  
**Other Bearing**

Element Number	Element Name	Total Qty	CS1 Qty	CS2 Qty	CS3 Qty	CS4 Qty
316	Other Bearings	1	0	1	0	0 Each
515	Steel Protective Coating	2	0	0	2	0 Square Feet

Element Number	Defect Type	Defect Description	CS	CS Qty	Maint Qty
316	Corrosion	RUST WITH NO SECTION LOSS	2	1	Each
515	Effectiveness (Steel Protective Coatings)	COATING NOT EFFECTIVE	3	2	2 Square Feet

General Comments

**Span 3 Far Bearing**  
**Other Bearing**

Element Number	Element Name	Total Qty	CS1 Qty	CS2 Qty	CS3 Qty	CS4 Qty
316	Other Bearings	1	0	1	0	0 Each
515	Steel Protective Coating	2	0	0	2	0 Square Feet

Element Number	Defect Type	Defect Description	CS	CS Qty	Maint Qty
316	Corrosion	RUST WITH NO SECTION LOSS	2	1	Each
515	Effectiveness (Steel Protective Coatings)	COATING NOT EFFECTIVE	3	2	2 Square Feet

General Comments

**Span 3 Near Bearing**  
**Other Bearing**

Element Number	Element Name	Total Qty	CS1 Qty	CS2 Qty	CS3 Qty	CS4 Qty
316	Other Bearings	1	0	1	0	0 Each
515	Steel Protective Coating	2	0	0	2	0 Square Feet

Element Number	Defect Type	Defect Description	CS	CS Qty	Maint Qty
316	Corrosion	RUST WITH NO SECTION LOSS	2	1	Each
515	Effectiveness (Steel Protective Coatings)	COATING NOT EFFECTIVE	3	2	2 Square Feet

General Comments

**Span 3 Far Bearing**  
**Other Bearing**

Element Number	Element Name	Total Qty	CS1 Qty	CS2 Qty	CS3 Qty	CS4 Qty
316	Other Bearings	1	0	1	0	0 Each
515	Steel Protective Coating	2	0	0	2	0 Square Feet

Element Number	Defect Type	Defect Description	CS	CS Qty	Maint Qty
316	Corrosion	RUST WITH NO SECTION LOSS	2	1	Each
515	Effectiveness (Steel Protective Coatings)	COATING NOT EFFECTIVE	3	2	2 Square Feet

**General Comments****Span 3 Near Bearing****Other Bearing**

Element Number	Element Name	Total Qty	CS1 Qty	CS2 Qty	CS3 Qty	CS4 Qty
316	Other Bearings	1	0	1	0	0 Each
515	Steel Protective Coating	2	0	0	2	0 Square Feet

Element Number	Defect Type	Defect Description	CS	CS Qty	Maint Qty
316	Corrosion	RUST WITH NO SECTION LOSS	2	1	Each
515	Effectiveness (Steel Protective Coatings)	COATING NOT EFFECTIVE	3	2	2 Square Feet

**General Comments****Span 3 Far Bearing****Other Bearing**

Element Number	Element Name	Total Qty	CS1 Qty	CS2 Qty	CS3 Qty	CS4 Qty
316	Other Bearings	1	0	1	0	0 Each
515	Steel Protective Coating	2	0	0	2	0 Square Feet

Element Number	Defect Type	Defect Description	CS	CS Qty	Maint Qty
316	Corrosion	RUST WITH NO SECTION LOSS	2	1	Each
515	Effectiveness (Steel Protective Coatings)	COATING NOT EFFECTIVE	3	2	2 Square Feet

**General Comments****Span 3 Near Bearing****Other Bearing**

Element Number	Element Name	Total Qty	CS1 Qty	CS2 Qty	CS3 Qty	CS4 Qty
316	Other Bearings	1	0	1	0	0 Each
515	Steel Protective Coating	2	0	0	2	0 Square Feet

Element Number	Defect Type	Defect Description	CS	CS Qty	Maint Qty
316	Corrosion	RUST WITH NO SECTION LOSS	2	1	Each
515	Effectiveness (Steel Protective Coatings)	COATING NOT EFFECTIVE	3	2	2 Square Feet

**General Comments****Span 3 Far Bearing****Other Bearing**

Element Number	Element Name	Total Qty	CS1 Qty	CS2 Qty	CS3 Qty	CS4 Qty
316	Other Bearings	1	0	1	0	0 Each
515	Steel Protective Coating	2	0	0	2	0 Square Feet

Element Number	Defect Type	Defect Description	CS	CS Qty	Maint Qty
----------------	-------------	--------------------	----	--------	-----------

Structure Number: 770152

Inspection Date: 05/09/2019

316	Corrosion	RUST WITH NO SECTION LOSS	2	1	Each
515	Effectiveness (Steel Protective Coatings)	COATING NOT EFFECTIVE	3	2	2 Square Feet

**General Comments**

**Span 4 Deck**

**Reinforced Concrete Deck**

Element Number	Element Name	Total Qty	CS1 Qty	CS2 Qty	CS3 Qty	CS4 Qty
12	Reinforced Concrete Deck	2,142	2,142	0	0	0 Square Feet

Element Number	Defect Type	Defect Description	CS	CS Qty	Maint Qty
----------------	-------------	--------------------	----	--------	-----------

**General Comments**

2

**Span 4 Beam 1**

**Plate Girder**

Element Number	Element Name	Total Qty	CS1 Qty	CS2 Qty	CS3 Qty	CS4 Qty
107	Steel Open Girder/Beam	67	0	67	0	0 Feet
515	Steel Protective Coating	680	500	180	0	0 Square Feet

Element Number	Defect Type	Defect Description	CS	CS Qty	Maint Qty
107	Corrosion	PAINTE PEELING WITH SURFACE RUST IN FLANGES AND WEBS	2	67	Feet
515	Peeling/Bubbling/Cracking (steel Protective Coatings)	PAINTE PEELING WITH SURFACE RUST IN FLANGES AND WEBS	2	180	180 Square Feet

**General Comments**

**Span 4 Beam 2**

**Plate Girder**

Element Number	Element Name	Total Qty	CS1 Qty	CS2 Qty	CS3 Qty	CS4 Qty
107	Steel Open Girder/Beam	67	0	67	0	0 Feet
515	Steel Protective Coating	680	500	180	0	0 Square Feet

Element Number	Defect Type	Defect Description	CS	CS Qty	Maint Qty
107	Corrosion	PAINTE PEELING WITH SURFACE RUST IN FLANGES AND WEBS	2	67	Feet
515	Peeling/Bubbling/Cracking (steel Protective Coatings)	PAINTE PEELING WITH SURFACE RUST IN FLANGES AND WEBS	2	180	180 Square Feet

**General Comments**



**Span 4****Beam 3****Plate Girder**

Element Number	Element Name	Total Qty	CS1 Qty	CS2 Qty	CS3 Qty	CS4 Qty
107	Steel Open Girder/Beam	67	0	67	0	0 Feet
515	Steel Protective Coating	680	500	180	0	0 Square Feet

Element Number	Defect Type	Defect Description	CS	CS Qty	Maint Qty
107	Corrosion	PAINT PEELING WITH SURFACE RUST IN FLANGES AND WEBS	2	67	Feet
515	Peeling/Bubbling/Cracking (steel Protective Coatings)	PAINT PEELING WITH SURFACE RUST IN FLANGES AND WEBS	2	180	180 Square Feet

**General Comments****Span 4****Beam 4****Plate Girder**

Element Number	Element Name	Total Qty	CS1 Qty	CS2 Qty	CS3 Qty	CS4 Qty
107	Steel Open Girder/Beam	67	0	67	0	0 Feet
515	Steel Protective Coating	680	500	180	0	0 Square Feet

Element Number	Defect Type	Defect Description	CS	CS Qty	Maint Qty
107	Corrosion	PAINT PEELING WITH SURFACE RUST IN FLANGES AND WEBS	2	67	Feet
515	Peeling/Bubbling/Cracking (steel Protective Coatings)	PAINT PEELING WITH SURFACE RUST IN FLANGES AND WEBS	2	180	180 Square Feet

**General Comments****Span 4****Near Bearing****Other Bearing**

Element Number	Element Name	Total Qty	CS1 Qty	CS2 Qty	CS3 Qty	CS4 Qty
316	Other Bearings	1	0	1	0	0 Each
515	Steel Protective Coating	2	0	0	2	0 Square Feet

Element Number	Defect Type	Defect Description	CS	CS Qty	Maint Qty
316	Corrosion	RUST WITH NO SECTION LOSS	2	1	Each
515	Effectiveness (Steel Protective Coatings)	COATING NOT EFFECTIVE	3	2	2 Square Feet

**General Comments****Span 4****Far Bearing****Other Bearing**

Element Number	Element Name	Total Qty	CS1 Qty	CS2 Qty	CS3 Qty	CS4 Qty
316	Other Bearings	1	0	1	0	0 Each
515	Steel Protective Coating	2	0	0	2	0 Square Feet

Element Number	Defect Type	Defect Description	CS	CS Qty	Maint Qty
316	Corrosion	RUST WITH NO SECTION LOSS	2	1	Each

515	Effectiveness (Steel Protective Coatings)	COATING NOT EFFECTIVE	3	2	2	Square Feet
-----	---	-----------------------	---	---	---	-------------

**General Comments****Span 4 Near Bearing****Other Bearing**

Element Number	Element Name	Total Qty	CS1 Qty	CS2 Qty	CS3 Qty	CS4 Qty
316	Other Bearings	1	0	1	0	0 Each
515	Steel Protective Coating	2	0	0	2	0 Square Feet

Element Number	Defect Type	Defect Description	CS	CS Qty	Maint Qty
316	Corrosion	RUST WITH NO SECTION LOSS	2	1	Each
515	Effectiveness (Steel Protective Coatings)	COATING NOT EFFECTIVE	3	2	2 Square Feet

**General Comments****Span 4 Far Bearing****Other Bearing**

Element Number	Element Name	Total Qty	CS1 Qty	CS2 Qty	CS3 Qty	CS4 Qty
316	Other Bearings	1	0	1	0	0 Each
515	Steel Protective Coating	2	0	0	2	0 Square Feet

Element Number	Defect Type	Defect Description	CS	CS Qty	Maint Qty
316	Corrosion	RUST WITH NO SECTION LOSS	2	1	Each
515	Effectiveness (Steel Protective Coatings)	COATING NOT EFFECTIVE	3	2	2 Square Feet

**General Comments****Span 4 Near Bearing****Other Bearing**

Element Number	Element Name	Total Qty	CS1 Qty	CS2 Qty	CS3 Qty	CS4 Qty
316	Other Bearings	1	0	1	0	0 Each
515	Steel Protective Coating	2	0	0	2	0 Square Feet

Element Number	Defect Type	Defect Description	CS	CS Qty	Maint Qty
316	Corrosion	RUST WITH NO SECTION LOSS	2	1	Each
515	Effectiveness (Steel Protective Coatings)	COATING NOT EFFECTIVE	3	2	2 Square Feet

**General Comments**

**Span 4 Far Bearing**  
**Other Bearing**

Element Number	Element Name	Total Qty	CS1 Qty	CS2 Qty	CS3 Qty	CS4 Qty	
316	Other Bearings	1	0	1	0	0	Each
515	Steel Protective Coating	2	0	0	2	0	Square Feet

Element Number	Defect Type	Defect Description	CS	CS Qty	Maint Qty	
316	Corrosion	RUST WITH NO SECTION LOSS	2	1		Each
515	Effectiveness (Steel Protective Coatings)	COATING NOT EFFECTIVE	3	2	2	Square Feet

General Comments

**Span 4 Near Bearing**  
**Other Bearing**

Element Number	Element Name	Total Qty	CS1 Qty	CS2 Qty	CS3 Qty	CS4 Qty	
316	Other Bearings	1	0	1	0	0	Each
515	Steel Protective Coating	2	0	0	2	0	Square Feet

Element Number	Defect Type	Defect Description	CS	CS Qty	Maint Qty	
316	Corrosion	RUST WITH NO SECTION LOSS	2	1		Each
515	Effectiveness (Steel Protective Coatings)	COATING NOT EFFECTIVE	3	2	2	Square Feet

General Comments

**Span 4 Far Bearing**  
**Other Bearing**

Element Number	Element Name	Total Qty	CS1 Qty	CS2 Qty	CS3 Qty	CS4 Qty	
316	Other Bearings	1	0	1	0	0	Each
515	Steel Protective Coating	2	0	0	2	0	Square Feet

Element Number	Defect Type	Defect Description	CS	CS Qty	Maint Qty	
316	Corrosion	RUST WITH NO SECTION LOSS	2	1		Each
515	Effectiveness (Steel Protective Coatings)	COATING NOT EFFECTIVE	3	2	2	Square Feet

General Comments

**Span 5 Deck**  
**Reinforced Concrete Deck**

Element Number	Element Name	Total Qty	CS1 Qty	CS2 Qty	CS3 Qty	CS4 Qty	
12	Reinforced Concrete Deck	2,001	1,999	0	2	0	Square Feet

Element Number	Defect Type	Defect Description	CS	CS Qty	Maint Qty	
12	Delamination/Spall	30" X 4" X 1" DEEP SPALL LOCATED ON BOTTOM SIDE OF DECK IN BAY 1 NEAR ENDBENT 2. EXPOSED REBAR	3			Square Feet
12	Delamination/Spall	30" X 4" X 1" DEEP SPALL LOCATED ON BOTTOM SIDE OF DECK IN BAY 3 NEAR ENDBENT 2. EXPOSED REBAR	3	1		Square Feet
12	Delamination/Spall	LEFT DECK OVERHANG SPALL 10" DIAMETER X 1" DEEP WITH 4" EXPOSED REBAR NEAR MID SPAN	3	1	1	Square Feet

**General Comments****Span 5****Beam 1****Plate Girder**

Element Number	Element Name	Total Qty	CS1 Qty	CS2 Qty	CS3 Qty	CS4 Qty
107	Steel Open Girder/Beam	67	0	67	0	0 Feet
515	Steel Protective Coating	630	450	180	0	0 Square Feet

Element Number	Defect Type	Defect Description	CS	CS Qty	Maint Qty
107	Corrosion	PAIN T PEELING AND SURFACE RUST IN FLANGES AND WEBS	2	67	Feet
515	Peeling/Bubbling/Cracking (steel Protective Coatings)	PAIN T PEELING AND SURFACE RUST IN FLANGES AND WEBS	2	180	180 Square Feet

**General Comments****Span 5****Beam 2****Plate Girder**

Element Number	Element Name	Total Qty	CS1 Qty	CS2 Qty	CS3 Qty	CS4 Qty
107	Steel Open Girder/Beam	67	0	67	0	0 Feet
515	Steel Protective Coating	630	450	180	0	0 Square Feet

Element Number	Defect Type	Defect Description	CS	CS Qty	Maint Qty
107	Corrosion	PAIN T PEELING AND SURFACE RUST IN FLANGES AND WEBS	2	67	Feet
515	Peeling/Bubbling/Cracking (steel Protective Coatings)	PAIN T PEELING AND SURFACE RUST IN FLANGES AND WEBS	2	180	180 Square Feet

**General Comments****Span 5****Beam 3****Plate Girder**

Element Number	Element Name	Total Qty	CS1 Qty	CS2 Qty	CS3 Qty	CS4 Qty
107	Steel Open Girder/Beam	67	0	67	0	0 Feet
515	Steel Protective Coating	630	450	180	0	0 Square Feet

Element Number	Defect Type	Defect Description	CS	CS Qty	Maint Qty
107	Corrosion	PAIN T PEELING AND SURFACE RUST IN FLANGES AND WEBS	2	67	Feet
515	Peeling/Bubbling/Cracking (steel Protective Coatings)	PAIN T PEELING AND SURFACE RUST IN FLANGES AND WEBS	2	180	180 Square Feet

**General Comments**

**Span 5****Beam 4****Plate Girder**

Element Number	Element Name	Total Qty	CS1 Qty	CS2 Qty	CS3 Qty	CS4 Qty	
107	Steel Open Girder/Beam	67	0	67	0	0	Feet
515	Steel Protective Coating	630	450	180	0	0	Square Feet

Element Number	Defect Type	Defect Description	CS	CS Qty	Maint Qty	
107	Corrosion	PAINT PEELING AND SURFACE RUST IN FLANGES AND WEBS	2	67		Feet
515	Peeling/Bubbling/Cracking (steel Protective Coatings)	PAINT PEELING AND SURFACE RUST IN FLANGES AND WEBS	2	180	180	Square Feet

**General Comments**

**Span 5****Near Bearing****Other Bearing**

Element Number	Element Name	Total Qty	CS1 Qty	CS2 Qty	CS3 Qty	CS4 Qty	
316	Other Bearings	1	0	1	0	0	Each
515	Steel Protective Coating	2	0	0	2	0	Square Feet

Element Number	Defect Type	Defect Description	CS	CS Qty	Maint Qty	
316	Corrosion	RUST WITH NO SECTION LOSS	2	1		Each
515	Effectiveness (Steel Protective Coatings)	COATING NOT EFFECTIVE	3	2	2	Square Feet

**General Comments**

**Span 5****Far Bearing****Other Bearing**

Element Number	Element Name	Total Qty	CS1 Qty	CS2 Qty	CS3 Qty	CS4 Qty	
316	Other Bearings	1	0	1	0	0	Each
515	Steel Protective Coating	2	0	0	2	0	Square Feet

Element Number	Defect Type	Defect Description	CS	CS Qty	Maint Qty	
316	Corrosion	RUST WITH NO SECTION LOSS	2	1		Each
515	Effectiveness (Steel Protective Coatings)	COATING NOT EFFECTIVE	3	2	2	Square Feet

**General Comments**

**Span 5****Near Bearing****Other Bearing**

Element Number	Element Name	Total Qty	CS1 Qty	CS2 Qty	CS3 Qty	CS4 Qty	
316	Other Bearings	1	0	1	0	0	Each
515	Steel Protective Coating	2	0	0	2	0	Square Feet

Element Number	Defect Type	Defect Description	CS	CS Qty	Maint Qty	
316	Corrosion	RUST WITH NO SECTION LOSS	2	1		Each
515	Effectiveness (Steel Protective Coatings)	COATING NOT EFFECTIVE	3	2	2	Square Feet

**General Comments**

**Span 5 Far Bearing**  
**Other Bearing**

Element Number	Element Name	Total Qty	CS1 Qty	CS2 Qty	CS3 Qty	CS4 Qty	
316	Other Bearings	1	0	1	0	0	Each
515	Steel Protective Coating	2	0	0	2	0	Square Feet

Element Number	Defect Type	Defect Description	CS	CS Qty	Maint Qty	
316	Corrosion	RUST WITH NO SECTION LOSS	2	1		Each
515	Effectiveness (Steel Protective Coatings)	COATING NOT EFFECTIVE	3	2	2	Square Feet

**General Comments**

**Span 5 Near Bearing**  
**Other Bearing**

Element Number	Element Name	Total Qty	CS1 Qty	CS2 Qty	CS3 Qty	CS4 Qty	
316	Other Bearings	1	0	1	0	0	Each
515	Steel Protective Coating	2	0	0	2	0	Square Feet

Element Number	Defect Type	Defect Description	CS	CS Qty	Maint Qty	
316	Corrosion	RUST WITH NO SECTION LOSS	2	1		Each
515	Effectiveness (Steel Protective Coatings)	COATING NOT EFFECTIVE	3	2	2	Square Feet

**General Comments**

**Span 5 Far Bearing**  
**Other Bearing**

Element Number	Element Name	Total Qty	CS1 Qty	CS2 Qty	CS3 Qty	CS4 Qty	
316	Other Bearings	1	0	1	0	0	Each
515	Steel Protective Coating	2	0	0	2	0	Square Feet

Element Number	Defect Type	Defect Description	CS	CS Qty	Maint Qty	
316	Corrosion	RUST WITH NO SECTION LOSS	2	1		Each
515	Effectiveness (Steel Protective Coatings)	COATING NOT EFFECTIVE	3	2	2	Square Feet

**General Comments**

**Span 5 Near Bearing**  
**Other Bearing**

Element Number	Element Name	Total Qty	CS1 Qty	CS2 Qty	CS3 Qty	CS4 Qty	
316	Other Bearings	1	0	1	0	0	Each
515	Steel Protective Coating	2	0	0	2	0	Square Feet

Element Number	Defect Type	Defect Description	CS	CS Qty	Maint Qty	
----------------	-------------	--------------------	----	--------	-----------	--

Structure Number: 770152

Inspection Date: 05/09/2019

316	Corrosion	RUST WITH NO SECTION LOSS	2	1	Each
515	Effectiveness (Steel Protective Coatings)	COATING NOT EFFECTIVE	3	2	2 Square Feet

**General Comments**

**Span 5 Far Bearing**

**Other Bearing**

Element Number	Element Name	Total Qty	CS1 Qty	CS2 Qty	CS3 Qty	CS4 Qty
316	Other Bearings	1	0	1	0	0 Each
515	Steel Protective Coating	2	0	0	2	0 Square Feet

Element Number	Defect Type	Defect Description	CS	CS Qty	Maint Qty
316	Corrosion	RUST WITH NO SECTION LOSS	2	1	Each
515	Effectiveness (Steel Protective Coatings)	COATING NOT EFFECTIVE	3	2	2 Square Feet

**General Comments**

**End Bent 1 Abutment**

**Reinforced Concrete Abutment**

Element Number	Element Name	Total Qty	CS1 Qty	CS2 Qty	CS3 Qty	CS4 Qty
215	Reinforced Concrete Abutment	40	39	1	0	0 Feet

Element Number	Defect Type	Defect Description	CS	CS Qty	Maint Qty
215	Delamination/Spall	SPALL MEASURING 7" HIGH X 4" WIDE X 1" DEEP LOCATED BAY 3 ADJACENT TO BEAM 3	2	1	1 Feet

**General Comments**

**End Bent 2 Cap 1**

**Reinforced Concrete Pier Cap**

Element Number	Element Name	Total Qty	CS1 Qty	CS2 Qty	CS3 Qty	CS4 Qty
234	Reinforced Concrete Pier Cap	40	40	0	0	0 Feet

Element Number	Defect Type	Defect Description	CS	CS Qty	Maint Qty
----------------	-------------	--------------------	----	--------	-----------

**General Comments**

END BENT PILES NOT VISIBLE DUE TO CONCRETE SLOPE PROTECTION

**End Bent 2 Abutment**

**Reinforced Concrete Abutment**

Element Number	Element Name	Total Qty	CS1 Qty	CS2 Qty	CS3 Qty	CS4 Qty
215	Reinforced Concrete Abutment	40	36	0	4	0 Feet

Element Number	Defect Type	Defect Description	CS	CS Qty	Maint Qty
215	Delamination/Spall	SPALL 1.5 FT LONG X 4" WIDE X 1" DEEP LOCATED IN BAY 2	3	2	2 Feet
215	Delamination/Spall	SPALL 1.5 FT LONG X 9" WIDE X 1" DEEP LOCATED IN BAY 1 BEHIND BEAM 2	3	2	Feet

**General Comments**

Structure Number: 770152

Inspection Date: 05/09/2019



## Elements Verified

Location	Name	Component	Element Name	Amount
Span 1	Deck	Reinforced Concrete Deck	Reinforced Concrete Deck	2001
Span 1	Beam 1	Plate Girder	Steel Open Girder/Beam	63
Span 1	Beam 2	Plate Girder	Steel Open Girder/Beam	63
Span 1	Beam 3	Plate Girder	Steel Open Girder/Beam	63
Span 1	Beam 4	Plate Girder	Steel Open Girder/Beam	63
Span 1	Left Bridge Rail	Concrete Railing	Reinforced Concrete Bridge Railing	64
Span 1	Right Bridge Rail	Concrete Railing	Reinforced Concrete Bridge Railing	64
Span 1	Expansion Joint	Standard Joint	Pourable Joint Seal	31
Span 1	Near Bearing	Other Bearing	Other Bearings	1
Span 1	Far Bearing	Other Bearing	Other Bearings	1
Span 1	Near Bearing	Other Bearing	Other Bearings	1
Span 1	Far Bearing	Other Bearing	Other Bearings	1
Span 1	Near Bearing	Other Bearing	Other Bearings	1
Span 1	Far Bearing	Other Bearing	Other Bearings	1
Span 1	Near Bearing	Other Bearing	Other Bearings	1
Span 1	Far Bearing	Other Bearing	Other Bearings	1
Span 2	Deck	Reinforced Concrete Deck	Reinforced Concrete Deck	2142
Span 2	Beam 1	Plate Girder	Steel Open Girder/Beam	67
Span 2	Beam 2	Plate Girder	Steel Open Girder/Beam	67
Span 2	Beam 3	Plate Girder	Steel Open Girder/Beam	67
Span 2	Beam 4	Plate Girder	Steel Open Girder/Beam	67
Span 2	Left Bridge Rail	Concrete Railing	Reinforced Concrete Bridge Railing	68
Span 2	Right Bridge Rail	Concrete Railing	Reinforced Concrete Bridge Railing	68
Span 2	Expansion Joint	Compression Seal	Compression Joint Seal	31
Span 2	Far Bearing	Other Bearing	Other Bearings	1
Span 2	Near Bearing	Other Bearing	Other Bearings	1
Span 2	Near Bearing	Other Bearing	Other Bearings	1
Span 2	Far Bearing	Other Bearing	Other Bearings	1
Span 2	Near Bearing	Other Bearing	Other Bearings	1
Span 2	Far Bearing	Other Bearing	Other Bearings	1
Span 2	Near Bearing	Other Bearing	Other Bearings	1
Span 2	Far Bearing	Other Bearing	Other Bearings	1
Span 3	Deck	Reinforced Concrete Deck	Reinforced Concrete Deck	2142
Span 3	Left Bridge Rail	Concrete Railing	Reinforced Concrete Bridge Railing	68
Span 3	Right Bridge Rail	Concrete Railing	Reinforced Concrete Bridge Railing	68
Span 3	Expansion Joint	Compression Seal	Compression Joint Seal	31
Span 4	Deck	Reinforced Concrete Deck	Reinforced Concrete Deck	2142
Span 4	Left Bridge Rail	Concrete Railing	Reinforced Concrete Bridge Railing	68
Span 4	Right Bridge Rail	Concrete Railing	Reinforced Concrete Bridge Railing	68
Span 4	Expansion Joint	Compression Seal	Compression Joint Seal	31
Span 5	Deck	Reinforced Concrete Deck	Reinforced Concrete Deck	2001
Span 5	Beam 1	Plate Girder	Steel Open Girder/Beam	67
Span 5	Beam 2	Plate Girder	Steel Open Girder/Beam	67
Span 5	Beam 3	Plate Girder	Steel Open Girder/Beam	67
Span 5	Beam 4	Plate Girder	Steel Open Girder/Beam	67

## Elements Verified

Location	Name	Component	Element Name	Amount
Span 5	Left Bridge Rail	Concrete Railing	Reinforced Concrete Bridge Railing	64
Span 5	Right Bridge Rail	Concrete Railing	Reinforced Concrete Bridge Railing	64
Span 5	Expansion Joint	Compression Seal	Compression Joint Seal	31
Span 5	Near Bearing	Other Bearing	Other Bearings	1
Span 5	Far Bearing	Other Bearing	Other Bearings	1
Span 5	Near Bearing	Other Bearing	Other Bearings	1
Span 5	Far Bearing	Other Bearing	Other Bearings	1
Span 5	Near Bearing	Other Bearing	Other Bearings	1
Span 5	Far Bearing	Other Bearing	Other Bearings	1
Span 5	Near Bearing	Other Bearing	Other Bearings	1
Span 5	Far Bearing	Other Bearing	Other Bearings	1
Bent 1	Cap 1	Reinforced Concrete Pier Cap	Reinforced Concrete Pier Cap	40
Bent 1	Pile 1	Prestressed Concrete Pile	Prestressed Concrete Pile	1
Bent 1	Pile 2	Prestressed Concrete Pile	Prestressed Concrete Pile	1
Bent 1	Pile 3	Prestressed Concrete Pile	Prestressed Concrete Pile	1
Bent 1	Pile 4	Prestressed Concrete Pile	Prestressed Concrete Pile	1
Bent 1	Pile 5	Prestressed Concrete Pile	Prestressed Concrete Pile	1
Bent 1	Pile 6	Prestressed Concrete Pile	Prestressed Concrete Pile	1
End Bent 1	Cap 1	Reinforced Concrete Pier Cap	Reinforced Concrete Pier Cap	40
End Bent 1	Abutment	Reinforced Concrete Abutment	Reinforced Concrete Abutment	40
Bent 2	Cap 1	Reinforced Concrete Pier Cap	Reinforced Concrete Pier Cap	40
Bent 2	Pile 1	Prestressed Concrete Pile	Prestressed Concrete Pile	1
Bent 2	Pile 2	Prestressed Concrete Pile	Prestressed Concrete Pile	1
Bent 2	Pile 3	Prestressed Concrete Pile	Prestressed Concrete Pile	1
Bent 2	Pile 4	Prestressed Concrete Pile	Prestressed Concrete Pile	1
Bent 2	Pile 5	Prestressed Concrete Pile	Prestressed Concrete Pile	1
Bent 2	Pile 6	Prestressed Concrete Pile	Prestressed Concrete Pile	1
End Bent 2	Cap 1	Reinforced Concrete Pier Cap	Reinforced Concrete Pier Cap	40
End Bent 2	Abutment	Reinforced Concrete Abutment	Reinforced Concrete Abutment	40
Bent 3	Cap 1	Reinforced Concrete Pier Cap	Reinforced Concrete Pier Cap	40
Bent 3	Pile 1	Prestressed Concrete Pile	Prestressed Concrete Pile	1
Bent 3	Pile 2	Prestressed Concrete Pile	Prestressed Concrete Pile	1
Bent 3	Pile 3	Prestressed Concrete Pile	Prestressed Concrete Pile	1
Bent 3	Pile 4	Prestressed Concrete Pile	Prestressed Concrete Pile	1
Bent 3	Pile 5	Prestressed Concrete Pile	Prestressed Concrete Pile	1
Bent 3	Pile 6	Prestressed Concrete Pile	Prestressed Concrete Pile	1
Bent 4	Cap 1	Reinforced Concrete Pier Cap	Reinforced Concrete Pier Cap	40
Bent 4	Pile 1	Prestressed Concrete Pile	Prestressed Concrete Pile	1
Bent 4	Pile 2	Prestressed Concrete Pile	Prestressed Concrete Pile	1
Bent 4	Pile 3	Prestressed Concrete Pile	Prestressed Concrete Pile	1
Bent 4	Pile 4	Prestressed Concrete Pile	Prestressed Concrete Pile	1
Bent 4	Pile 5	Prestressed Concrete Pile	Prestressed Concrete Pile	1
Bent 4	Pile 6	Prestressed Concrete Pile	Prestressed Concrete Pile	1

# General Inspection Notes

Bent 2

Cap 1

END BENT PILES NOT VISIBLE DUE TO CONCRETE SLOPE PROTECTION

---

Span 2

Deck

---

Span 4

Deck

---

2

---

# National Bridge and NC Inspection Items

Structure Number: 770152

Inspection Date: 05/09/2019

## National Bridge Inventory Items

Item	Grade Scale	Grade
Item 58: Deck	0 - 9 , N	8
Item 59: Superstructure	0 - 9 , N	6
Item 60: Substructure	0 - 9 , N	6
Item 61: Channel and Channel Protection	0 - 9 , N	N
Item 62: Culvert	0 - 9 , N	N
Item 71: Waterway Adequacy	0 - 9 , N	N
Item 72: Approach Roadway Alignment	0 - 9 , N	6

Note: If NBI Inspection Item is not present, code NBI item with "N"

## NC SMU Inspection Items

Item	Grade Scale	Grade	Maint. Qty.	Maint. Code
Deck Debris	G, F, P, or C	G	0	3376
Drainage System	G, F, P, or C	G	0	3332
Utilities	G, F, P, or C			
Slope Protection	G, F, P, or C	F	0	3352
Scour	G, F, P, or C			
Wingwall	G, F, P, or C	G	0	3350
Field Scour Evaluation				
Drift	G, F, P, or C		0	3366
Fender System	G, F, P, or C		0	3364
Movable Span Machinery	G, F, P, or C			
Response to Live Load	G, F, P, or C	G		
Estimated Remaining Life	0 - 100 Years			
Superstructure Paint Code		A		

Note: If NC SMU Inspection Item is not present, leave NC SMU item blank

## Inspection Information

Item	Grade Scale	Grade
Sign Noticed Issued	YES/NO	N
Priority Maintenance Request Submitted	YES/NO	N
Inspection Time	Hours	9
Traffic Control Time	Hours	0
Snooper Time	Hours	0
Ladder Used	YES/NO	Y
Bucket Truck Used	YES/NO	N
Boat Used	YES/NO	N
Other Equipment Used	YES/NO	N

# National Bridge and NC SMU Inspection Item Details

Structure Number: 770152

Inspection Date: 05/09/2019

---

<b>Item</b>	Deck - Item 58	<b>Grade</b>	8	<b>Maint Code</b>		<b>Qty.</b>	0
-------------	----------------	--------------	---	-------------------	--	-------------	---

**Details** DECK HAS BEEN RESURFACED SINCE PREVIOUS INSPECTION

---

<b>Item</b>	Approach Roadway Alignment - Item 72	<b>Grade</b>	6	<b>Maint Code</b>		<b>Qty.</b>	0
-------------	--------------------------------------	--------------	---	-------------------	--	-------------	---

**Details** LATERAL CRACKING ACROSS ENTIRE ROADWAY 5FT EAST OF EAST APPROACH



Span 2 Right Bridge Rail: RAIL POST # 4 SPALL 4" HIGH X 2" WIDE X 1" DEEP WITH EXPOSED REBAR



LAERAL CRACKING ACROSS ENTIRE ROADWAY 5FT EAST OF EAST APPROACH





Span 5 Deck: 30" X 4" X 1" DEEP SPALL LOCATED ON BOTTOM SIDE OF DECK IN BAY 3 NEAR ENDBENT 2.  
EXPOSED REBAR



End Bent 2 Abutment/Backwall : SPALL 1.5 FT LONG X 4" WIDE X 1" DEEP LOCATED IN BAY 2



Span 5 Beam 2: PAINT PEELING AND SURFACE RUST IN FLANGES AND WEBS



SPALL MEASURING 8" IN DIAMETER BY 1" DEEP LOCATED IN THE CONCRETE BUILD UP IN SPAN 1 BAY 2 OVER BENT 1.





End Bent 1 Abutment/Backwall : SPALL MEASURING 7" HIGH X 4" WIDE X 1" DEEP LOCATED BAY 3 ADJACENT TO BEAM 3



Span 1 Beam 1: PAINT PEELING WITH SURFACE RUST , NO SECTION LOSS





COVER PHOTO LOOKING EAST



SW GUARDRAIL END TERMINAL





SW GUARDRAIL MID POST SPACING



NW GUARDRAIL NOT ATTACHED. OTHER LOCATIONS SIMILAR





LEFT RAIL. RIGHT RAIL SIMILAR



WEST APPROACH LOOKING WEST





LOOKING NORTH



LOOKING SOUTH



EAST APPROACH



LOOKING WEST





ABUTMENT 2



ABUTMENT 2 BEAM 3



SPAN 5 SUPERSTRUCTURE



BENT 4 BEAM 1 BEARING





BENT 4



SPAN 2 THRU LANES LOOKING SOUTH



NORTH ELEVATION



SOUTH ELEVATION





SPAN 4 THRU LANES LOOKING NORTH



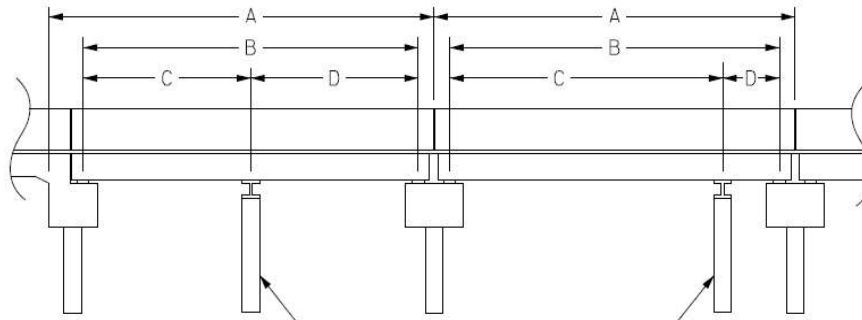
BENT 1 BEAM 4 BEARING

# Structure Data Worksheet

## Span Profile

County: **ROBESON**

Structure Number: **770152**



A: SPAN LENGTH  
 B: BEARING TO BEARING  
 C: DISTANCE FROM NEAR BEARING  
 D: DISTANCE TO FAR BEARING

Span Number	Span Length	Bearing to Bearing	Crutch/ Helper Bent	Distance to Near Bearing	Distance to Far Bearing
1	63.500	61.333			
2	68.000	66.667			
3	68.000	66.667			
4	68.000	66.667			
5	63.500	61.333			

NATIONAL BRIDGE INVENTORY----- STRUCTURE INVENTORY AND APPRAISAL

Run Date: 06/25/2019

**IDENTIFICATION**

(1) STATE NAME -NORTH CAROLINA BRIDGE **770152**  
 (8) STRUCTURE NUMBER(FEDERAL) 000000001550152  
 (5) INVENTORY ROUTE (ON/UNDER) - ON 31017580  
 (2) STATE HIGHWAY DEPARTMENT DISTRICT 1  
 (3) COUNTY CODE 155 (4) PLACE CODE 0  
 (6) FEATURE INTERSECTED - I95  
 (7) FACILITY CARRIED SR1758  
 (9) LOCATION 0.7 MI.W.JCT.SR1759  
 (11)MILEPOINT 0  
 (16)LAT 34° 46' 12.12" (17)LONG 78° 59' 45.87"  
 (98)BORDER BRIDGE STATE CODE PCT SHARE  
 (99)BORDER BRIDGE STRUCTURE NO

SUFFICIENCY RATING = 94.81  
 STATUS = Not Deficient

**CLASSIFICATION** **CODE**

(112)NBIS BRIDGE SYSTEM - YES  
 (104)HIGHWAY SYSTEM Is not on NHS 0  
 (26) FUNCTIONAL CLASS - Local 09  
 (100)STRAHNET HIGHWAY - Not a STRAHNET Route 0  
 (101)PARALLEL STRUCTURE - No Parallel Structure N  
 (102)DIRECTION OF TRAFFIC - 2-way Traffic 2  
 (103)TEMPORARY STRUCTURE -  
 (110)DESIGNATED NATIONAL NETWORK - Not on the National Network 0  
 (20) TOLL On Free Road 3  
 (31) MAINTAIN - State Highway Agency 01  
 (22) OWNER - State Highway Agency 01  
 (37) HISTORICAL SIGNIFICANCE - Not Eligible 5

**STRUCTURE TYPE AND MATERIAL**

(43) STRUCTURE TYPE MAIN: Steel  
 TYPE - Stringer Mutlibeam or Girder CODE 302  
 (44) STRUCTURE TYPE APPR :  
 TYPE - CODE 000  
 (45) NUMBER OF SPANS IN MAIN UNIT 5  
 (46) NUMBER OF APPROACH SPANS  
 (107)DECK STRUCTURE TYPE - 1 CODE  
 (108)WEARING SURFACE / PROTECTIVE SYSTEM :  
 (A) TYPE OF WEARING SURFACE - Concrete CODE 1  
 (B) TYPE OF MEMBRANE - None CODE 0  
 (C) TYPE OF DECK PROTECTION - None CODE 0

**CONDITION** **CODE**

(58) DECK 8  
 (59) SUPERSTRUCTURE 6  
 (60) SUBSTRUCTURE 6  
 (61) CHANNEL & CHANNEL PROTECTION N  
 (62) CULVERTS N

**LOAD RATING AND POSTING** **CODE**

(31) DESIGN LOAD HS 15 3  
 (63) OPERATING RATING METHOD - Load Factor 1  
 (64) OPERATING RATING - HS-43 78  
 (65) INVENTORY RATING METHOD - Load Factor 1  
 (66) INVENTORY RATING - HS-26 46  
 (70) BRIDGE POSTING - No Posting Required 5  
 (41) STRUCTURE OPEN, POSTED ,OR CLOSED A  
 DESCRIPTION - Open, No Restriction

**AGE AND SERVICE**

(27) YEAR BUILT 1959  
 (106)YEAR RECONSTRUCTED  
 (42) TYPE OF SERVICE : ON - Highway  
 UNDER - Highway CODE 11  
 (28) LANES: ON STRUCTURE 2 UNDER STRUCTURE 4  
 (29) AVERAGE DAILY TRAFFIC 480  
 (30) YEAR OF ADT 2015 (109) TRUCK ADT PCT 6%  
 (19) BYPASS OR DETOUR LENGTH 5 MI

**APPRAISAL** **CODE**

(67) STRUCTURAL EVALUATION 6  
 (68) DECK GEOMETRY 5  
 (69) UNDERCLEARANCES,VERTI & HORIZ 4  
 (71) WATERWAY ADEQUACY N  
 (72) APPROACH ROADWAY ALIGNMENT 6  
 (36) TRAFFIC SAFETY FEATURES 0010  
 (113)SCOUR CRITICAL BRIDGES N

**GEOMETRIC DATA**

(48) LENGTH OF MAXIMUM SPAN 67 FT  
 (49) STRUCTURE LENGTH 331 FT  
 (50)CURB OR SIDEWALK: LEFT 1.7085 FT RIGHT 1.7085 FT  
 (51) BRIDGE ROADWAY WIDTH CURB TO CURB 28 FT  
 (52) DECK WIDTH OUT TO OUT 33.417 FT  
 (32) APPROACH ROADWAY WIDTH (W/SHOULDERS) 18 FT  
 (33) BRIDGE MEDIAN - No Median CODE 0  
 (34) SKEW 50° (35) STRUCTURE FLARED 0  
 (10) INVENTORY ROUTE MIN VERT CLEAR 999.9 FT  
 (47) INVENTORY ROUTE TOTAL HORIZ CLEAR 28 FT  
 (53) MIN VERT CLEAR OVER BRIDGE RDWY 999.9 FT  
 (54) MIN VERT UNDERCLEAR REF Highway 16.8 FT  
 (55) MIN LAT UNDERCLEAR RT REF Highway 11 FT  
 (56) MIN LAT UNDERCLEAR LT REF - 6.6 FT

**PROPOSED IMPROVEMENTS** **CODE**

(75) TYPE OF WORK - CODE  
 (76) LENGTH OF STRUCTURE IMPROVEMENT  
 (94) BRIDGE IMPROVEMENT COST  
 (95) ROADWAY IMPROVEMENT COST  
 (96) TOTAL PROJECT COST  
 (97) YEAR OF IMPROVEMENT COST ESTIMATE  
 (114)FUTURE ADT 960 (115) YEAR FUTURE ADT 2025

**INSPECTIONS**

(90) INSPECTION DATE 05/09/2019  
 (92) CRITICAL FEATURE INSPECTION : (93) CFI DATE  
 A) FRACTURE CRIT DETAIL - NO A)  
 B) UNDERWATER INSP - NO B)  
 C) OTHER SPECIAL INSP NO C)  
 SCOUR

**NAVIGATION DATA**

(38) NAVIGATION CONTROL - Not Applicable CODE N  
 (111)PIER PROTECTION - CODE  
 (39) NAVIGATION VERTICAL CLEARANCE 0  
 (116)VERT - LIFT BRIDGE NAV MIN VERT CLEAR FT  
 (40) NAVIGATION HORIZONTAL CLEARANCE 0 FT

Structure No: 770152

County: ROBESON

Run Date:

Span Number	Feature Intersected	Inventory Route	Minimum Maximum Vertical Clearance	Milepoint	Base Highway Network	LRS Inventory Route	Toll	Functional Classification	Nuner of Lanes	Average Daily Traffic	Year of Average Daily Traffic	Total Horizontal Clearance	See Note 1							Highway System of Route
													Reference Feature	Minimum Vertical Underclearance	Right Lateral Underclearance	Left Lateral Underclearance	Underclearance Appraisal Grade	STRAHNET Highway Designator	Direction of Traffic	
	6	5	10	11	12	13	20	26	28	29	30	47	54A	54	55	56	69	100	102	104
2	I95S	11000950	17	28.50	1	10095		1	2	23000	2015	41.6	H	16.9	11	6.6	9	1	1	1
4	I95N	11000950	17	28.50	1	10095		1	2	23000	2015	41.6	H	16.8	11	6.6	9	1	1	1

Note 1: Items 54, 55, and 56 are not reported FHWA under route data points but are collected for each under route to determine the minimum value for Underclearance Appraisal Item 69. The under route that generates the lowest Underclearance Appraisal value will be reported on the Facility Carried record.

**BRIDGE MANAGEMENT UNIT**

**DATA ON EXISTING STRUCTURE**

Run Date: 06/25/2019

COUNTY : ROBESON                      DIVISION : 6                      DISTRICT : 1                      STRUCTURE NUMBER : 770152                      LENGTH : 331 FEET

ROUTE CARRIED : SR1758                      FEATURE INTERSECTED : I95

LOCATED : 0.7 MI.W.JCT.SR1759                      BRIDGE NAME :                      CITY :

FUNC. CLASS : 09                      SYST.ON : NFA                      SYST.UNDER : NFA                      ADT & YR : 480 2015                      RAIL TYPE : LT 111 RT 111

BUILT : 1959                      BY : SHC                      PROJ : 8.13972                      FED.AID PROJ :                      DESIGN LOAD : HS 15

REHAB :                      BY :                      PROJ :                      ALIGNMENT : TAN.                      SKEW : 140                      LANES : ON 2 UNDER 4

NAVIGATION : VC 0 FT                      HC 0 FT                      HT. CRN. TO BED : 0 FT                      WATER DEPTH : 0 FT

SUPERSTRUCTURE : RC FLOOR ON I-BEAMS

SUBSTRUCTURE : E.BTS&INT.BTS:RC CAP/PPC PILES @ 7CTS.

SPANS : 1@63'6";3@68";1@63'6

BEAMS OR GIRDERS : 4 LINES W36X150 I-BEAMS @ 8'CENTERS

FLOOR : 7 RC/NO AWS                      ENCROACHMENT :                      DECK (OUT TO OUT) : 33.417 FT

CLEAR ROADWAY : 28 FT                      BETWEEN RAILS : 31.417 FT                      SIDEWALK OR CURB : LT 1.7085 FT RT 1.7085 FT

VERT.CL.OVER : 999.9 FT

INV.RTG. : HS-26                      OPE.RTG. : HS-43                      CONTR.MEMBER : int.bmA                      POSTED : SV                      TTST                      DATE

SYSTEM : Primary S.R. Route                      GREEN LINE ROUTE : N

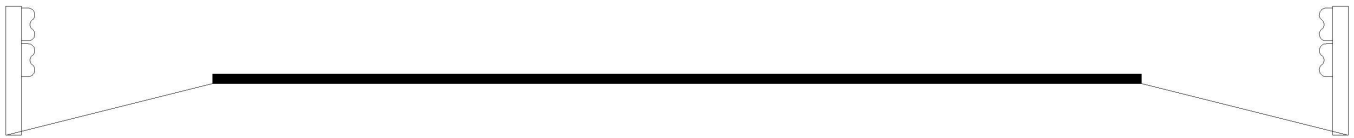
**UNDER ROUTES AND CLEARANCES**

Span	Route Description	Vertical Clearances		Horizontal Clearances		
		MMVC	MVC	Total	Left	Right
2	I95S	17	16.90	41.60	6.60	11
4	I95N	17	16.80	41.60	6.60	11

*Note: All measurements are in feet.*

REMARKS :

# Bridge Inspection Field Sketch



MEASUREMENTS TAKE 25' FROM END BENT 2

Roadway	18ft Wide	2 Paved Lanes	Looking East
Left Shoulder	4ft Wide		4ft Unpaved
Right Shoulder	4ft Wide		4ft Unpaved
Left Guardrail	4ft from road		
Right Guardrail	4ft from road		

MEASUREMENTS VERIFIED BY RLK 5/9/17

MEASUREMENTS VERIFIED 05/09/2019 BY JTE

MEASUREMENTS UPDATED 5/19/2015 BY DRW

**Title**

Approach Roadway

**Description**

SR 1758 Looking East

Bridge No: 770152

Drawn By: RJH

Date: 06/14/2006

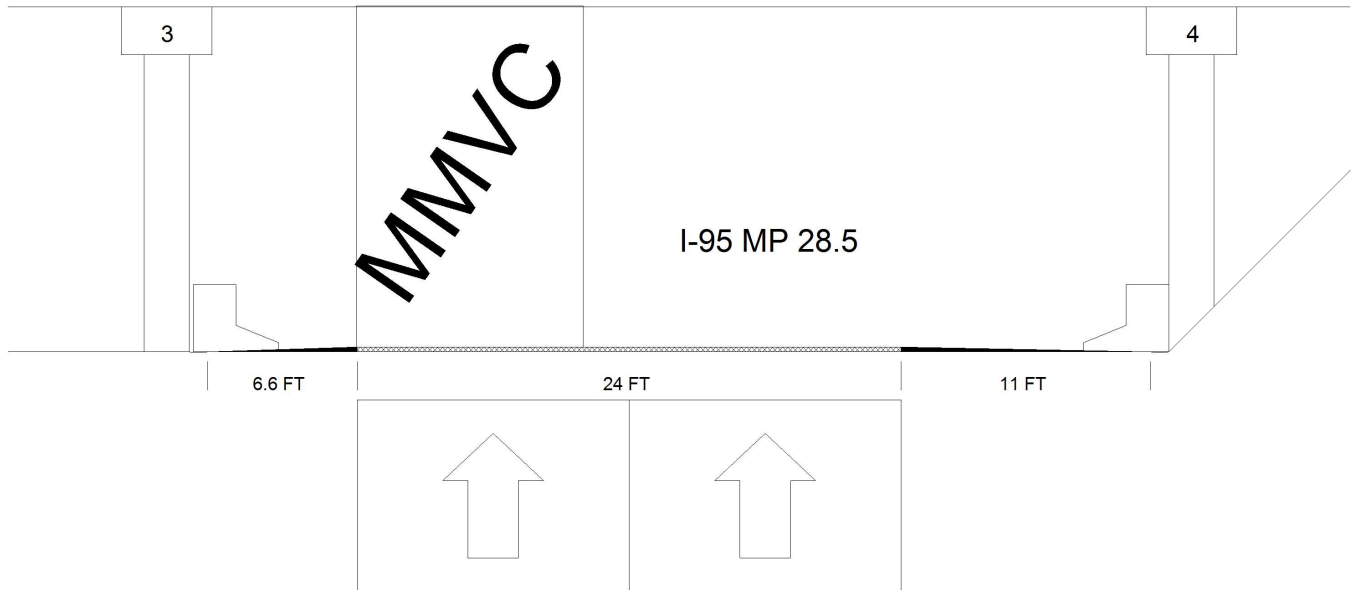
File Name: S0258000087



# Bridge Inspection Field Sketch

SR- 1758

Span 4



Roadway 1		Direction of Traffic	North
Distance to Left Rail	6.6FT	Distance to Right Rail	11FT
Distance to Left Toe of Slope		Distance to Left Bent	7.4FT
Distance to Right Toe of Slope	11.8FT	Distance to Right Bent	11.8FT
MMVC	17.0 Ft at Beam 1, 10 FT from LEFT EDGE OF PAVEMENT		
MVC	16.8 Ft at Beam 1, 0 FT from RIGHT EDGE OF TRAVEL LANES		

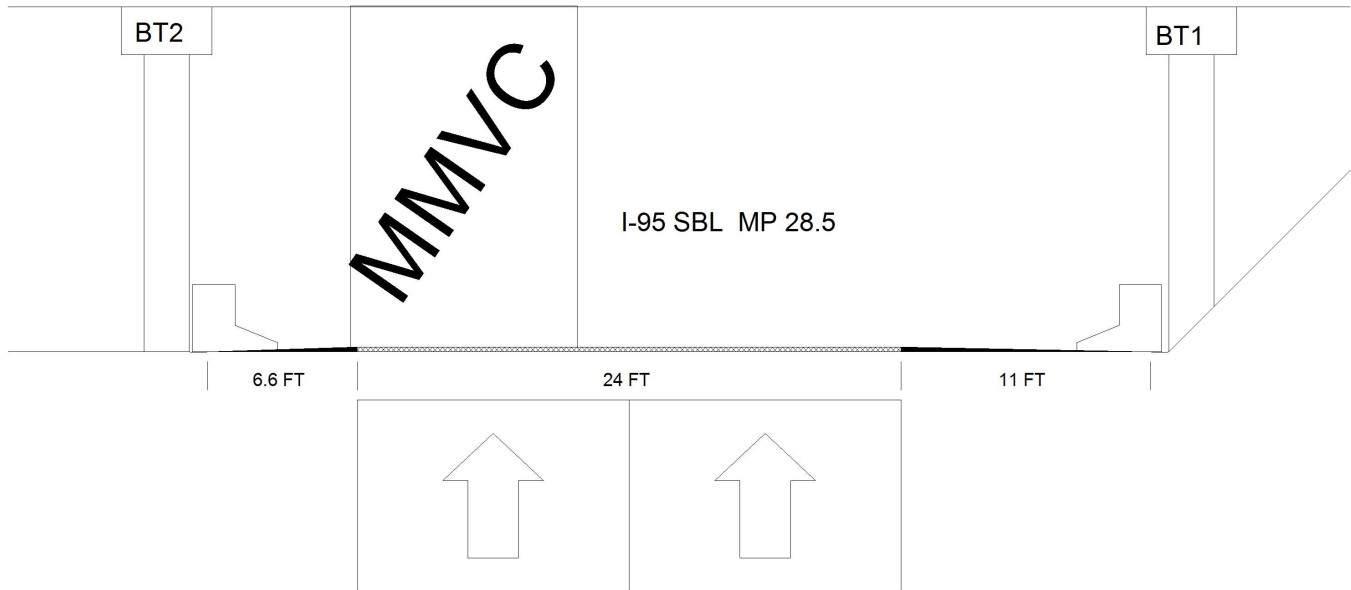
MEASUREMENTS UPDATED 05/09/2019 BY JTE  
 MEASUREMENTS VERIFIED BY RLK 5/9/17  
 MEASUREMENTS VERIFIED 5/19/2015 BY DRW

<b>Title</b>		<b>Description</b>	
NBL Clearance		NBL Clearance SPAN 4	
Bridge No: 770152	Drawn By: RLK	Date: 9/28/2011	File Name: S0258000088

# Bridge Inspection Field Sketch

SR- 1758 ( MC DUFFIE CROSSING ROAD )

Span 2



Roadway 1		Direction of Traffic	South
Distance to Left Rail	6.6FT	Distance to Right Rail	11FT
Distance to Left Toe of Slope		Distance to Left Bent	7.4FT
Distance to Right Toe of Slope	11.8FT	Distance to Right Bent	11.8FT
MMVC	17.0 Ft at Beam 4, 10 FT from 10' FROM LT EDGE OF PAVEMENT		
MVC	16.9 Ft at Beam 4, 0 FT from AT CENTER LINE		

MEASUREMENTS UPDATED 5/09/2019 BY JTE  
 MEASUREMENTS VERIFIED BY RLK 5/9/17  
 MEASUREMENTS VERIFIED 5/19/2015 BY DRW

**Title**

SBL Clearance

**Description**

SBL Clearance

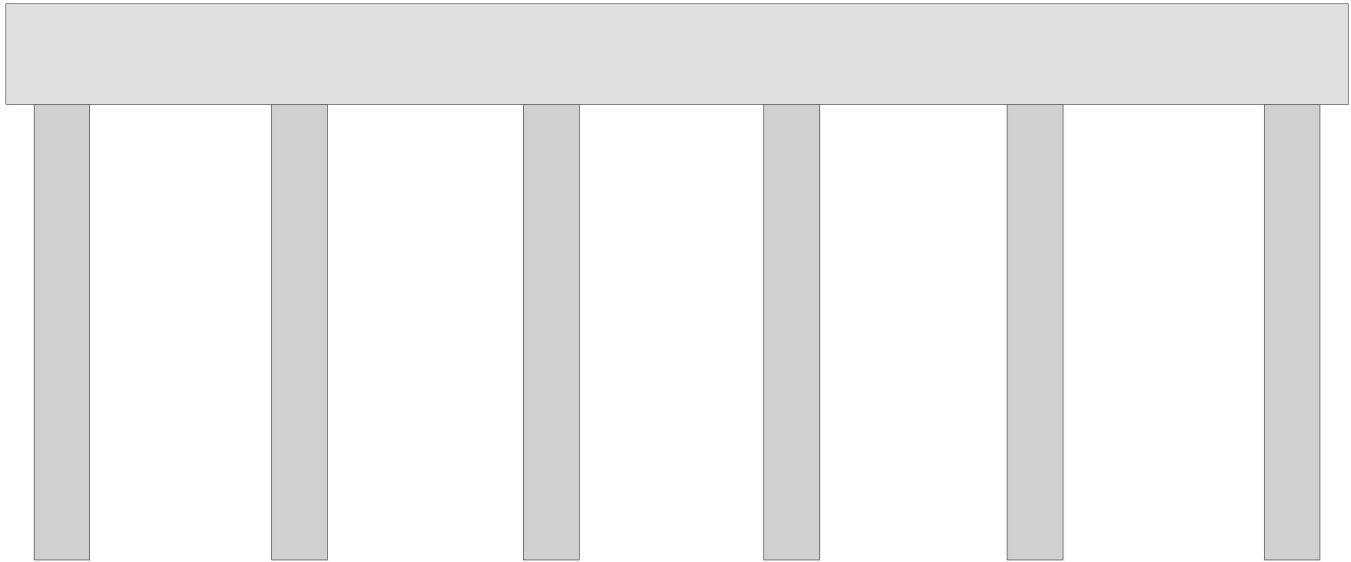
Bridge No: 770152

Drawn By: RLK

Date: 9/28/2011

File Name: S0258000089

# Bridge Inspection Field Sketch



<b>Cap Information</b>			<b>Material</b> Cast-in-Place Concrete							
Length	Width	Height	Left Overhang	Right Overhang	Left Beam to End of Cap.	Right Beam to End of Cap.				
40.000 ft.	3.000 ft.	3.000 ft.	1.667 ft.	1.667 ft.	1.750 ft.	1.750 ft.				
<b>Subcap Information</b>			<b>Material</b>							
Length	Width	Height	Left Overhang	Right Overhang	Left Pile to Splice.					
<b>Sill Information</b>			<b>Material</b>							
Length	Width	Height								
Pile #	Material	Spacing	Width/Dia.	Height	Length	Orientation	Driven?	Replacement?	Removed?	Collar?
1	Concrete	7.5 ft.	1.667 ft.			Vertical	Yes	No	No	No
2	Concrete	7.6 ft.	1.667 ft.			Vertical	Yes	No	No	No
3	Concrete	7.3 ft.	1.667 ft.			Vertical	Yes	No	No	No
4	Concrete	7.5 ft.	1.667 ft.			Vertical	Yes	No	No	No
5	Concrete	7.3 ft.	1.667 ft.			Vertical	Yes	No	No	No
6	Concrete		1.667 ft.			Vertical	Yes	No	No	No
<p>MEASUREMENTS UPDATED 05/09/2019 BY JTE            MEASUREMENTS VERIFIED BY RLK 5/9/17</p>										
<b>Bent/Abutment #:</b> 1			<b>Similar Bents:</b> 2,3&4							

**Title** MEASUREMENTS UPDATED 5/19/2015 BY DRW  
 SUBSTRUCTURE

**Description**  
 SIMILAR BENT

**Bridge No:** 770152

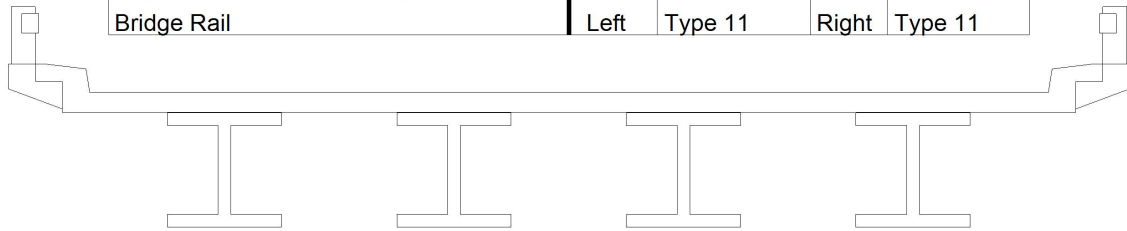
**Drawn By:** RJH

**Date:** 06/14/2006

**File Name:** S0258000090

# Bridge Inspection Field Sketch

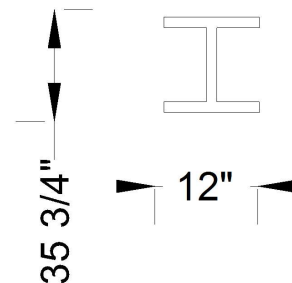
Deck Width/Out to Out	33.417ft	Between Rails	31.417ft
Clear Roadway	28ft	Wearing Surface	
Median Width		Median Height	
Curb Height		Left 0.833ft	Right 0.833ft
Sidewalk Width		Left	Right
Clear Roadway (Rail to Median)		Left	Right
Guardrail Width		Left 1ft	Right 1ft
Top of Rail to Deck/Wearing Surface		Left 2.5ft	Right 2.5ft
Bridge Rail		Left Type 11	Right Type 11



Measurements for Span #	1		
Deck Thickness	0.583	Left Overhang	4.708
Top of Rail to Bottom of Beam	6.167	Right Overhang	4.708

Beam Number	Beam Type	Spacing	Comments
1	Steel I Beam	8ft	
2	Steel I Beam	8ft	
3	Steel I Beam	8ft	
4	Steel I Beam	ft	

### SIMILAR BEAM



FLANGES= 13/16" WEBS= 0.642"  
COVERPLATES= 0.589"H X 10"W

MEASUREMENTS VERIFIED 05/09/2019 BY JTE

MEASUREMENTS VERIFIED BY RLK 5/9/17

MEASUREMENTS UPDATED 5/19/2015 BY DRW

**Title**

SUPERSTRUCTURE

**Description**

SIMILAR SECTION

Bridge No: 770152

Drawn By: RJH

Date: 06/14/2006

File Name: S0258000091