



NC DEPARTMENT OF TRANSPORTATION  
 DIVISION OF HIGHWAYS  
 STRUCTURE MANAGEMENT UNIT

ATTENTION: **PAR ISSUED, UPDATED SUPERSTRUCTURE SKETCH, UPDATED SOUTH BOUND LANE UNDERCLEARANCE SKETCH, UPDATED NORTH BOUND LANE UNDERCLEARANCE SKETCH.**

# Structure Safety Report

## Routine Element Inspection - Contract

INSPECTION DATE: 05/17/2019

DIVISION: 6 COUNTY: ROBESON STRUCTURE NUMBER: 770100 FREQUENCY: 24 MONTHS

FACILITY CARRIED: US301 MILE POST: \_\_\_\_\_

LOCATION: 0.5 MI.S.JCT.SR1727

FEATURE INTERSECTED: I95

LATITUDE: 34° 50' 0.83" LONGITUDE: 78° 58' 42.65"

SUPERSTRUCTURE: REINFORCED CONCRETE FLOOR ON I-BEAMS

SUBSTRUCTURE: E.BTS:RC CAPS/PPC PILES ; BTS:RCP&B/PPC PILE FTGS.

SPANS: 4 SPANS. SEE SPAN PROFILE SHEET FOR SPAN DETAILS

FRACTURE CRITICAL     TEMPORARY SHORING     SCOUR CRITICAL     SCOUR PLAN OF ACTION

NBI GRADES: DECK 6 SUPERSTRUCTURE 5 SUBSTRUCTURE 5 CULVERT N

POSTED SV: Not Posted POSTED TTST: Not Posted

OTHER SIGNS PRESENT: NONE



Sign noticed issued for	Number Required
<u>NO</u> WEIGHT LIMIT	<u>0</u>
<u>NO</u> DELINEATORS	<u>0</u>
<u>NO</u> NARROW BRIDGE	<u>0</u>
<u>NO</u> ONE LANE BRIDGE	<u>0</u>
<u>NO</u> LOW CLEARANCE	<u>0</u>

DIRECTION OF INSPECTION: S-N

DIRECTION MATCHES PLANS: NO PLANS

COVER SHEET PHOTO LOOKING NORTH

INSPECTED BY JOHN T. EUBANKS	SIGNATURE <i>John T. Eubanks</i>	ASSISTED BY FELTON W. BERGER
---------------------------------	-------------------------------------	---------------------------------

## Structure Element Scoring

Structure Number: 770100

Inspection Date 5/17/2019

Element Number	Parent Number	Element Name	Location	Total Quantity	Level 1 Quantity	Level 2 Quantity	Level 3 Quantity	Level 4 Quantity
12	0	Reinforced Concrete Deck	Deck	8808	7342	1418	48	0
107	0	Steel Open Girder/Beam	Beam	1112	1071	40	1	0
515	107	Steel Protective Coating	Beam	11184	11155	21	7	1
205	0	Reinforced Concrete Column	Piles and Columns	9	5	4	0	0
215	0	Reinforced Concrete Abutment	Abutments	104	77	4	23	0
226	0	Prestressed Concrete Pile	Foundation Pile	3	3	0	0	0
226	0	Prestressed Concrete Pile	Piles and Columns	20	20	0	0	0
234	0	Reinforced Concrete Pier Cap	Caps	218	162	44	12	0
302	0	Compression Joint Seal	Expansion Joints	225	114	93	18	0
316	0	Other Bearings	Bearing Device	32	9	12	11	0
515	316	Steel Protective Coating	Bearing Device	88	64	2	20	2
321	0	Reinforced Concrete Approach Slabs	Approaches	870	845	0	25	0
331	0	Reinforced Concrete Bridge Railing	Bridge Rail	564	0	494	70	0
510	0	Wearing Surface	Wearing Surfaces	7850	7838	2	10	0

# Summary of Maintenance Needs

## Maintenance By Defect

Structure Number: 770100

Inspection Date: 05/17/2019

<b>MMS Code</b>	<b>Element Name</b>	<b>Defect Name</b>	<b>Recommended Quantity</b>
3326	Reinforced Concrete Deck	Delamination/Spall	61 Square Feet
3326	Reinforced Concrete Deck	Cracking (RC and Other)	1412 Square Feet
3314	Steel Open Girder/Beam	Corrosion	1 Feet
3348	Reinforced Concrete Column	Delamination/Spall	2 Each
3350	Reinforced Concrete Abutment	Delamination/Spall	1 Feet
3350	Reinforced Concrete Abutment	Cracking (RC and Other)	29 Feet
3348	Reinforced Concrete Pier Cap	Cracking (RC and Other)	42 Feet
3348	Reinforced Concrete Pier Cap	Delamination/Spall	15 Feet
3310	Compression Joint Seal	Debris Impaction	25 Feet
3310	Compression Joint Seal	Seal Adhesion	10 Feet
3334	Other Bearings	Corrosion	2 Each
3334	Other Bearings	Connection	14 Each
3353	Reinforced Concrete Approach Slabs	Cracking (RC and Other)	25 Square Feet
3318	Reinforced Concrete Bridge Railing	Delamination/Spall	567 Feet
3318	Reinforced Concrete Bridge Railing	Exposed Rebar	14 Feet
3318	Reinforced Concrete Bridge Railing	Cracking (RC and Other)	107 Feet
2816	Wearing Surface	Crack (Wearing Surface)	12 Square Feet
3342	Steel Protective Coating	Effectiveness (Steel Protective Coatings)	53 Square Feet

## Element Structure Maintenance Quantities

Structure Number: 770100

Inspection Date 05/17/2019

Location	MMS Code	Description	Maint Quantity	Total Quantity	Severe Quantity	Poor Quantity	Fair Quantity	Good Quantity
Abutments	3350	Maintenance of Concrete Wings and Wall	30	104	0	23	4	77
Approaches	3353	Maintenance of Concrete Bridge Approach Slabs	25	870	0	25	0	845
Beam	3314	Maintenance Steel Superstructure Components	1	1112	0	1	40	1071
Beam	3342	Clean and Paint Steel	29	11184	1	7	21	11155
Bearing Device	3334	Bridge Bearing	16	32	0	11	12	9
Bearing Device	3342	Clean and Paint Steel	24	88	2	20	2	64
Bridge Rail	3318	Maintenance of Concrete Bridge Rail	688	564	0	70	494	0
Caps	3348	Maintenance of Concrete Substructure	57	218	0	12	44	162
Deck	3326	Maintenance of Concrete Deck	1473	8808	0	48	1418	7342
Expansion Joints	3310	Maintenance of Standard Bridge Expansion Joints	35	225	0	18	93	114
Foundation Pile	3348	Maintenance of Concrete Substructure	0	3	0	0	0	3
Piles and Columns	3348	Maintenance of Concrete Substructure	2	29	0	0	4	25
Wearing Surfaces	2816	Asphalt Surface Repair	12	7850	0	10	2	7838

## Element Condition and Maintenance Data

Structure Number: 770100

Inspection Date: 05/17/2019

### Span 1 Deck Reinforced Concrete Deck

Element Number	Element Name	Total Qty	CS1 Qty	CS2 Qty	CS3 Qty	CS4 Qty	
12	Reinforced Concrete Deck	2,016	1,659	357	0	0	Square Feet

Element Number	Defect Type	Defect Description	CS	CS Qty	Maint Qty	
12	Cracking (RC and Other)	12 - 24" TRANSVERSE HAIRLINE CRACKS IN BOTTOM OF DECK WEST OVERHANG	2	12	24	Square Feet
12	Cracking (RC and Other)	14 - 24" TRANSVERSE HAIRLINE CRACKS IN BOTTOM OF DECK EAST OVERHANG	2	14	28	Square Feet
12	Cracking (RC and Other)	300 SF. OF TRANSVERSE HAIRLINE CRACKS IN BOTTOM OF DECK	2	300	300	Square Feet
12	Cracking (RC and Other)	4ft x 1/16" LONGITUDINAL CRACK ADJACENT TO APPROACH	2	4	4	Square Feet
12	Delamination/Spall	2 - 12" DIAMETER DELAMINATIONS IN BOTTOM OF DECK 20 FT. FROM BENT 1 BAY 3	2	2	2	Square Feet
12	Patched Areas	25 SF. OF PATCHED AREAS IN BOTTOM OF DECK	2	25		Square Feet

**General Comments**

### Span 1 Beam 1 Plate Girder

Element Number	Element Name	Total Qty	CS1 Qty	CS2 Qty	CS3 Qty	CS4 Qty	
107	Steel Open Girder/Beam	63	59	4	0	0	Feet
515	Steel Protective Coating	632	628	1	3	0	Square Feet

Element Number	Defect Type	Defect Description	CS	CS Qty	Maint Qty	
107	Corrosion	1 FT. OF PAINTED OVER PITTING UP TO 1/16" DEEP WITH RUST BLEEDING IN WEB AND BEARING STIFFENER AROUND END DIAPHRAGM AT BENT 1	2	1		Feet
107	Corrosion	3 FT. OF SURFACE CORROSION ON TOP AND BOTTOM FLANGE AT END BENT 1	2	3		Feet
515	Effectiveness (Steel Protective Coatings)	3 SF. OF INEFFECTIVE PROTECTIVE COATING ON TOP AND BOTTOM FLANGE AT END BENT 1	3	3	3	Square Feet
515	Effectiveness (Steel Protective Coatings)	1 SF. OF RUST BLEEDING ON BOTTOM FLANGE AT BENT 1	2	1	1	Square Feet

**General Comments**

END DIAPHRAGM BAY 1 AT BENT 1: 18" X 3" DELAMINATION

### Span 1 Beam 2 Plate Girder

Element Number	Element Name	Total Qty	CS1 Qty	CS2 Qty	CS3 Qty	CS4 Qty	
107	Steel Open Girder/Beam	63	61	2	0	0	Feet
515	Steel Protective Coating	632	630	1	1	0	Square Feet

Element Number	Defect Type	Defect Description	CS	CS Qty	Maint Qty	
107	Corrosion	1 FT. OF PAINTED OVER PITTING UP TO 1/16" DEEP WITH RUST BLEEDING IN WEB AND BEARING STIFFENER AROUND END DIAPHRAGM AT BENT 1	2	1		Feet
107	Corrosion	1 FT. OF SURFACE CORROSION ON TOP AND BOTTOM FLANGE AT END BENT 1	2	1		Feet
515	Effectiveness (Steel Protective Coatings)	1 SF. OF INEFFECTIVE PROTECTIVE COATING ON TOP AND BOTTOM FLANGE AT END BENT 1	3	1	1	Square Feet
515	Effectiveness (Steel Protective Coatings)	1 SF. OF RUST BLEEDING ON BOTTOM FLANGE AT BENT 1	2	1	1	Square Feet

Protective Coatings)

**General Comments**

END DIAPHRAGM BAY 2 AT BENT 1: 18" X 3" DELAMINATION

**Span 1****Beam 3****Plate Girder**

Element Number	Element Name	Total Qty	CS1 Qty	CS2 Qty	CS3 Qty	CS4 Qty
107	Steel Open Girder/Beam	63	61	2	0	0 Feet
515	Steel Protective Coating	632	630	1	1	0 Square Feet

Element Number	Defect Type	Defect Description	CS	CS Qty	Maint Qty
107	Corrosion	1 FT. OF PAINTED OVER PITTING UP TO 1/16" DEEP WITH RUST BLEEDING IN WEB AND BEARING STIFFENER AROUND END DIAPHRAGM AT BENT 1	2	1	Feet
107	Corrosion	1 FT. OF SURFACE CORROSION ON TOP AND BOTTOM FLANGE AT END BENT 1	2	1	Feet
107	Distortion	8" LONG X 1/2" HIGH AREA OF DISTORTION IN BOTTOM FLANGE AT END BENT 1	2		Feet
515	Effectiveness (Steel Protective Coatings)	1 SF. OF INEFFECTIVE PROTECTIVE COATING ON TOP AND BOTTOM FLANGE AT END BENT 1	3	1	1 Square Feet
515	Effectiveness (Steel Protective Coatings)	1 SF. OF RUST BLEEDING ON BOTTOM FLANGE AT BENT 1	2	1	1 Square Feet

**General Comments****Span 1****Beam 4****Plate Girder**

Element Number	Element Name	Total Qty	CS1 Qty	CS2 Qty	CS3 Qty	CS4 Qty
107	Steel Open Girder/Beam	63	62	1	0	0 Feet
515	Steel Protective Coating	632	631	1	0	0 Square Feet

Element Number	Defect Type	Defect Description	CS	CS Qty	Maint Qty
107	Corrosion	1 FT. OF PAINTED OVER PITTING UP TO 1/16" DEEP WITH RUST BLEEDING IN WEB AND BEARING STIFFENER AROUND END DIAPHRAGM AT BENT 1	2	1	Feet
515	Effectiveness (Steel Protective Coatings)	1 SF. OF RUST BLEEDING ON BOTTOM FLANGE AT BENT 1	2	1	1 Square Feet

**General Comments**

END DIAPHRAGM EAST OVERHANG AT BENT 1: 12" X 4" DELAMINATION

**Span 1****Expansion Joint****Compression Seal**

Element Number	Element Name	Total Qty	CS1 Qty	CS2 Qty	CS3 Qty	CS4 Qty
302	Compression Joint Seal	45	33	2	10	0 Feet

Element Number	Defect Type	Defect Description	CS	CS Qty	Maint Qty
302	Seal Adhesion	10 FT. OF PARTIAL DEPTH LOSS OF ADHESION	3	10	10 Feet
302	Debris Impaction	2 FT. OF DEBRIS IMPACTION	2	2	2 Feet

**General Comments**

**Span 1 Left Bridge Rail****Concrete Railing**

Element Number	Element Name	Total Qty	CS1 Qty	CS2 Qty	CS3 Qty	CS4 Qty
331	Reinforced Concrete Bridge Railing	65	0	63	2	0 Feet

Element Number	Defect Type	Defect Description	CS	CS Qty	Maint Qty
331	Cracking (RC and Other)	2 - 18" TRANSVERSE CRACKS UP TO 1/16" WIDE IN CURB	3	2	3 Feet
331	Delamination/Spall	65 FT. OF ABRASION WITH EXPOSED COARSE AGGREGATE	2	59	65 Feet
331	Exposed Rebar	4 - SPALLS WITH EXPOSED REBAR UP TO 6" DIAMETER X 1/2" DEEP IN RAIL	2	4	4 Feet

**General Comments****Span 1 Right Bridge Rail****Concrete Railing**

Element Number	Element Name	Total Qty	CS1 Qty	CS2 Qty	CS3 Qty	CS4 Qty
331	Reinforced Concrete Bridge Railing	65	0	60	5	0 Feet

Element Number	Defect Type	Defect Description	CS	CS Qty	Maint Qty
331	Cracking (RC and Other)	5 - 18" TRANSVERSE CRACKS UP TO 1/16" WIDE IN CURB	3	5	8 Feet
331	Delamination/Spall	65 FT. OF ABRASION WITH EXPOSED COARSE AGGREGATE	2	60	65 Feet

**General Comments****Span 1 Near Bearing****Other Bearing**

Element Number	Element Name	Total Qty	CS1 Qty	CS2 Qty	CS3 Qty	CS4 Qty
316	Other Bearings	1	0	1	0	0 Each
515	Steel Protective Coating	2	0	0	2	0 Square Feet

Element Number	Defect Type	Defect Description	CS	CS Qty	Maint Qty
316	Corrosion	SURFACE CORROSION	2	1	Each
515	Effectiveness (Steel Protective Coatings)	2 SF. OF INEFFECTIVE PROTECTIVE COATING	3	2	2 Square Feet

**General Comments****Span 1 Far Bearing****Other Bearing**

Element Number	Element Name	Total Qty	CS1 Qty	CS2 Qty	CS3 Qty	CS4 Qty
316	Other Bearings	1	0	0	1	0 Each
515	Steel Protective Coating	3	3	0	0	0 Square Feet

Element Number	Defect Type	Defect Description	CS	CS Qty	Maint Qty
316	Connection	2" LONG CRACK IN WELD OF EAST STIFFENER TO VERTICAL PLATE PAR	3	1	1 Each

**General Comments**

**Span 1 Near Bearing**  
**Other Bearing**

Element Number	Element Name	Total Qty	CS1 Qty	CS2 Qty	CS3 Qty	CS4 Qty	
316	Other Bearings	1	0	1	0	0	Each
515	Steel Protective Coating	2	0	0	2	0	Square Feet

Element Number	Defect Type	Defect Description	CS	CS Qty	Maint Qty	
316	Corrosion	SURFACE CORROSION	2	1		Each
515	Effectiveness (Steel Protective Coatings)	2 SF. OF INEFFECTIVE PROTECTIVE COATING	3	2	2	Square Feet

**General Comments**

**Span 1 Far Bearing**  
**Other Bearing**

Element Number	Element Name	Total Qty	CS1 Qty	CS2 Qty	CS3 Qty	CS4 Qty	
316	Other Bearings	1	0	0	1	0	Each
515	Steel Protective Coating	3	3	0	0	0	Square Feet

Element Number	Defect Type	Defect Description	CS	CS Qty	Maint Qty	
316	Connection	2" LONG CRACK IN WELD OF EAST STIFFENER TO VERTICAL PLATE (BOTH PLATES) PAR	3	1	1	Each

**General Comments**

**Span 1 Near Bearing**  
**Other Bearing**

Element Number	Element Name	Total Qty	CS1 Qty	CS2 Qty	CS3 Qty	CS4 Qty	
316	Other Bearings	1	0	1	0	0	Each
515	Steel Protective Coating	2	0	0	2	0	Square Feet

Element Number	Defect Type	Defect Description	CS	CS Qty	Maint Qty	
316	Corrosion	SURFACE CORROSION	2	1		Each
515	Effectiveness (Steel Protective Coatings)	2 SF. OF INEFFECTIVE PROTECTIVE COATING	3	2	2	Square Feet

**General Comments**

**Span 1 Far Bearing**  
**Other Bearing**

Element Number	Element Name	Total Qty	CS1 Qty	CS2 Qty	CS3 Qty	CS4 Qty	
316	Other Bearings	1	0	0	1	0	Each
515	Steel Protective Coating	3	3	0	0	0	Square Feet

Element Number	Defect Type	Defect Description	CS	CS Qty	Maint Qty	
316	Connection	1" LONG CRACK IN WELD OF WEST STIFFENER TO VERTICAL PLATE (BOTH PLATES) PAR	3	1	1	Each
316	Corrosion	PAINTED OVER PITTING 1/8" DEEP WITH RUST BLEEDING	3		1	Each

**General Comments**



**Span 1 Near Bearing**  
**Other Bearing**

Element Number	Element Name	Total Qty	CS1 Qty	CS2 Qty	CS3 Qty	CS4 Qty
316	Other Bearings	1	0	1	0	0 Each
515	Steel Protective Coating	2	0	0	2	0 Square Feet

Element Number	Defect Type	Defect Description	CS	CS Qty	Maint Qty
316	Corrosion	SURFACE CORROSION	2	1	Each
515	Effectiveness (Steel Protective Coatings)	2 SF. OF INEFFECTIVE PROTECTIVE COATING	3	2	2 Square Feet

General Comments

**Span 1 Far Bearing**  
**Other Bearing**

Element Number	Element Name	Total Qty	CS1 Qty	CS2 Qty	CS3 Qty	CS4 Qty
316	Other Bearings	1	0	0	1	0 Each
515	Steel Protective Coating	3	3	0	0	0 Square Feet

Element Number	Defect Type	Defect Description	CS	CS Qty	Maint Qty
316	Connection	1" LONG CRACK IN WELD OF EAST STIFFENER TO VERTICAL PLATE (BOTH PLATES) PAR	3	1	1 Each

General Comments

**Span 1 Wearing Surface**  
**Concrete Wearing Surface**

Element Number	Element Name	Total Qty	CS1 Qty	CS2 Qty	CS3 Qty	CS4 Qty
510	Wearing Surface	1,797	1,787	0	10	0 Square Feet

Element Number	Defect Type	Defect Description	CS	CS Qty	Maint Qty
510	Crack (Wearing Surface)	10 FT. OF DIAGONAL CRACKING UP TO 1/16" WIDE AT END BENT 1	3	10	10 Square Feet

General Comments

**Span 2 Deck**  
**Reinforced Concrete Deck**

Element Number	Element Name	Total Qty	CS1 Qty	CS2 Qty	CS3 Qty	CS4 Qty
12	Reinforced Concrete Deck	2,388	2,053	333	2	0 Square Feet

Element Number	Defect Type	Defect Description	CS	CS Qty	Maint Qty
12	Delamination/Spall	12" DIAMETER SPALL IN BOTTOM OF DECK BAY 1 OVER TRAFFIC PAR	3	1	1 Square Feet
12	Delamination/Spall	12" DIAMETER SPALL IN BOTTOM OF DECK EAST OVERHANG OVER TRAFFIC PAR	3	1	1 Square Feet
12	Cracking (RC and Other)	11 - 24" TRANSVERSE HAIRLINE CRACKS WITH EFFLORESCENCE IN BOTTOM OF DECK EAST OVERHANG	2	11	22 Square Feet
12	Cracking (RC and Other)	13 - 24" TRANSVERSE HAIRLINE CRACKS WITH EFFLORESCENCE IN BOTTOM OF DECK WEST	2	13	26 Square Feet

		OVERHANG			
12	Cracking (RC and Other)	300 SF. OF TRANSVERSE HAIRLINE CRACKS IN BOTTOM OF DECK	2	300	300 Square Feet
12	Delamination/Spall	12" X 6" SPALL IN BOTTOM OF DECK EAST OVERHANG NEAR MIDSPAN OVER TRAFFIC PAR	2	1	1 Square Feet
12	Patched Areas	8 SF. OF PATCHED AREAS IN BOTTOM OF DECK	2	8	Square Feet

**General Comments****Span 2****Beam 1****Plate Girder**

Element Number	Element Name	Total Qty	CS1 Qty	CS2 Qty	CS3 Qty	CS4 Qty
107	Steel Open Girder/Beam	76	69	7	0	0 Feet
515	Steel Protective Coating	766	765	1	0	0 Square Feet

Element Number	Defect Type	Defect Description	CS	CS Qty	Maint Qty
107	Corrosion	1 FT. OF PAINTED OVER PITTING UP TO 1/16" DEEP WITH RUST BLEEDING IN WEB AND BEARING STIFFENER AROUND END DIAPHRAGM AT BENT 1	2	1	Feet
107	Corrosion	1 FT. OF PAINTED OVER PITTING UP TO 1/16" DEEP WITH RUST BLEEDING IN WEB AND BEARING STIFFENER AROUND END DIAPHRAGM AT BENT 2	2	1	Feet
107	Distortion	5 FT. OF VEHICLE SCRAPES WITH MULTIPLE GOUGES UP TO 1" X 1/2" IN BOTTOM FLANGE AND BOTTOM FLANGE COVER PLATE AT 1/4 POINT	2	5	Feet
515	Effectiveness (Steel Protective Coatings)	1 SF. OF RUST BLEEDING ON BOTTOM FLANGE AT BENT 2	2	1	1 Square Feet

**General Comments**

END DIAPHRAGM WEST OVERHANG AT BENT 1: 16" X 4" DELAMINATION  
 END DIAPHRAGM WEST OVERHANG AT BENT 2: 8" X 4" DELAMINATION  
 END DIAPHRAGM BAY 1 AT BENT 2: 10" X 6" DELAMINATION

**Span 2****Beam 2****Plate Girder**

Element Number	Element Name	Total Qty	CS1 Qty	CS2 Qty	CS3 Qty	CS4 Qty
107	Steel Open Girder/Beam	76	74	2	0	0 Feet
515	Steel Protective Coating	766	764	2	0	0 Square Feet

Element Number	Defect Type	Defect Description	CS	CS Qty	Maint Qty
107	Corrosion	1 FT. OF PAINTED OVER PITTING UP TO 1/16" DEEP WITH RUST BLEEDING IN WEB AND BEARING STIFFENER AROUND END DIAPHRAGM AT BENT 1	2	1	Feet
107	Corrosion	1 FT. OF PAINTED OVER PITTING UP TO 1/16" DEEP WITH RUST BLEEDING IN WEB AND BEARING STIFFENER AROUND END DIAPHRAGM AT BENT 2	2	1	Feet
515	Effectiveness (Steel Protective Coatings)	1 SF. OF RUST BLEEDING ON BOTTOM FLANGE AT BENT 1	2	1	1 Square Feet
515	Effectiveness (Steel Protective Coatings)	1 SF. OF RUST BLEEDING ON BOTTOM FLANGE AT BENT 2	2	1	1 Square Feet

**General Comments**

END DIAPHRAGM BAY 2 AT BENT 1: 18" X 3" DELAMINATION  
 END DIAPHRAGM BAY 2 AT BENT 2: 2 - 6" DIAMETER DELAMINATIONS

**Span 2** **Beam 3**  
**Plate Girder**

Element Number	Element Name	Total Qty	CS1 Qty	CS2 Qty	CS3 Qty	CS4 Qty
107	Steel Open Girder/Beam	76	74	2	0	0 Feet
515	Steel Protective Coating	766	765	1	0	0 Square Feet

Element Number	Defect Type	Defect Description	CS	CS Qty	Maint Qty
107	Corrosion	1 FT. OF PAINTED OVER PITTING UP TO 1/16" DEEP WITH RUST BLEEDING IN WEB AND BEARING STIFFENER AROUND END DIAPHRAGM AT BENT 1	2	1	Feet
107	Corrosion	1 FT. OF PAINTED OVER PITTING UP TO 1/16" DEEP WITH RUST BLEEDING IN WEB AND BEARING STIFFENER AROUND END DIAPHRAGM AT BENT 2	2	1	Feet
515	Effectiveness (Steel Protective Coatings)	1 SF. OF RUST BLEEDING ON BOTTOM FLANGE AT BENT 2	2	1	1 Square Feet

**General Comments**

END DIAPHRAGM BAY 3 AT BENT 2: 8" DIAMETER DELAMINATION AND 10" X 3" X 1" DEEP SPALL

**Span 2** **Beam 4**  
**Plate Girder**

Element Number	Element Name	Total Qty	CS1 Qty	CS2 Qty	CS3 Qty	CS4 Qty
107	Steel Open Girder/Beam	76	69	7	0	0 Feet
515	Steel Protective Coating	766	765	1	0	0 Square Feet

Element Number	Defect Type	Defect Description	CS	CS Qty	Maint Qty
107	Corrosion	1 FT. OF PAINTED OVER PITTING UP TO 1/16" DEEP WITH RUST BLEEDING IN WEB AND BEARING STIFFENER AROUND END DIAPHRAGM AT BENT 1	2	1	Feet
107	Corrosion	1 FT. OF PAINTED OVER PITTING UP TO 1/16" DEEP WITH RUST BLEEDING IN WEB AND BEARING STIFFENER AROUND END DIAPHRAGM AT BENT 2	2	1	Feet
107	Distortion	5 FT. OF VEHICLE SCRAPES WITH MULTIPLE GOUGES UP TO 1" X 1/2" IN BOTTOM FLANGE AND BOTTOM FLANGE COVER PLATE AT 1/4 POINT	2	5	Feet
515	Effectiveness (Steel Protective Coatings)	1 SF. OF RUST BLEEDING ON BOTTOM FLANGE AT BENT 2	2	1	1 Square Feet

**General Comments**

END DIAPHRAGM EAST OVERHANG AT BENT 2: 14" X 3" X 2" DEEP SPALL WITH EXPOSED REBAR

**Span 2** **Expansion Joint**  
**Compression Seal**

Element Number	Element Name	Total Qty	CS1 Qty	CS2 Qty	CS3 Qty	CS4 Qty
302	Compression Joint Seal	45	20	25	0	0 Feet

Element Number	Defect Type	Defect Description	CS	CS Qty	Maint Qty
302	Debris Impaction	10 FT. OF DEBRIS IMPACTION	2	10	10 Feet
302	Seal Adhesion	ADHESION FAILURE AT RANDOM LOCATIONS THROUGHOUT	2	15	Feet

**General Comments**

**Span 2 Left Bridge Rail****Concrete Railing**

Element Number	Element Name	Total Qty	CS1 Qty	CS2 Qty	CS3 Qty	CS4 Qty
331	Reinforced Concrete Bridge Railing	76	0	64	12	0 Feet

Element Number	Defect Type	Defect Description	CS	CS Qty	Maint Qty
331	Cracking (RC and Other)	12 - 18" TRANSVERSE CRACKS UP TO 1/16" WIDE IN CURB	3	12	18 Feet
331	Delamination/Spall	76 FT. OF ABRASION WITH EXPOSED COARSE AGGREGATE	2	62	76 Feet
331	Exposed Rebar	2 - SPALLS WITH EXPOSED REBAR UP TO 6" DIAMETER X 1/2" DEEP IN RAIL	2	2	2 Feet

**General Comments****Span 2 Right Bridge Rail****Concrete Railing**

Element Number	Element Name	Total Qty	CS1 Qty	CS2 Qty	CS3 Qty	CS4 Qty
331	Reinforced Concrete Bridge Railing	76	0	63	13	0 Feet

Element Number	Defect Type	Defect Description	CS	CS Qty	Maint Qty
331	Cracking (RC and Other)	13 - 18" TRANSVERSE CRACKS UP TO 1/16" WIDE IN CURB	3	13	20 Feet
331	Delamination/Spall	76 FT. OF ABRASION WITH EXPOSED COARSE AGGREGATE	2	63	76 Feet

**General Comments****Span 2 Near Bearing****Other Bearing**

Element Number	Element Name	Total Qty	CS1 Qty	CS2 Qty	CS3 Qty	CS4 Qty
316	Other Bearings	1	0	0	1	0 Each
515	Steel Protective Coating	3	3	0	0	0 Square Feet

Element Number	Defect Type	Defect Description	CS	CS Qty	Maint Qty
316	Connection	3" LONG CRACK IN WELD OF EAST STIFFENER TO VERTICAL PLATE (PM)	3	1	1 Each
316	Connection	3" LONG CRACK IN WELD OF WEST STIFFENER TO VERTICAL PLATE (PM)	3		1 Each

**General Comments****Span 2 Far Bearing****Other Bearing**

Element Number	Element Name	Total Qty	CS1 Qty	CS2 Qty	CS3 Qty	CS4 Qty
316	Other Bearings	1	0	0	1	0 Each
515	Steel Protective Coating	3	3	0	0	0 Square Feet

Element Number	Defect Type	Defect Description	CS	CS Qty	Maint Qty
316	Connection	1" LONG CRACK IN WELD OF EAST STIFFENER TO VERTICAL PLATE (BOTH PLATES) PAR	3	1	1 Each

**General Comments**

**Span 2 Near Bearing**  
**Other Bearing**

Element Number	Element Name	Total Qty	CS1 Qty	CS2 Qty	CS3 Qty	CS4 Qty
316	Other Bearings	1	0	0	1	0 Each
515	Steel Protective Coating	3	3	0	0	0 Square Feet

Element Number	Defect Type	Defect Description	CS	CS Qty	Maint Qty
316	Connection	2" LONG CRACK IN WELD OF EAST STIFFENER TO VERTICAL PLATE	3	1	1 Each

General Comments

**Span 2 Far Bearing**  
**Other Bearing**

Element Number	Element Name	Total Qty	CS1 Qty	CS2 Qty	CS3 Qty	CS4 Qty
316	Other Bearings	1	0	1	0	0 Each
515	Steel Protective Coating	3	1	0	2	0 Square Feet

Element Number	Defect Type	Defect Description	CS	CS Qty	Maint Qty
316	Corrosion	SURFACE CORROSION	2	1	Each
515	Effectiveness (Steel Protective Coatings)	2 SF. OF INEFFECTIVE PROTECTIVE COATING	3	2	2 Square Feet

General Comments

**Span 2 Far Bearing**  
**Other Bearing**

Element Number	Element Name	Total Qty	CS1 Qty	CS2 Qty	CS3 Qty	CS4 Qty
316	Other Bearings	1	0	0	1	0 Each
515	Steel Protective Coating	3	1	0	0	2 Square Feet

Element Number	Defect Type	Defect Description	CS	CS Qty	Maint Qty
316	Connection	1" LONG CRACK IN WELD OF WEST STIFFENER TO VERTICAL PLATE (BOTH SIDES) PAR	3	1	1 Each
316	Corrosion	1/8" OF PACK RUST	3		1 Each
515	Effectiveness (Steel Protective Coatings)	2 SF. OF INEFFECTIVE PROTECTIVE COATING	4	2	2 Square Feet

General Comments

**Span 2 Far Bearing**  
**Other Bearing**

Element Number	Element Name	Total Qty	CS1 Qty	CS2 Qty	CS3 Qty	CS4 Qty
316	Other Bearings	1	0	1	0	0 Each
515	Steel Protective Coating	3	1	0	2	0 Square Feet

Element Number	Defect Type	Defect Description	CS	CS Qty	Maint Qty
316	Corrosion	SURFACE CORROSION	2	1	Each

515	Effectiveness (Steel Protective Coatings)	2 SF. OF INEFFECTIVE PROTECTIVE COATING	3	2	2 Square Feet
-----	---	---	---	---	---------------

**General Comments****Span 3 Deck****Reinforced Concrete Deck**

Element Number	Element Name	Total Qty	CS1 Qty	CS2 Qty	CS3 Qty	CS4 Qty	
12	Reinforced Concrete Deck	2,388	1,922	420	46	0	Square Feet

Element Number	Defect Type	Defect Description	CS	CS Qty	Maint Qty	
12	Cracking (RC and Other)	48" LONGITUDINAL CRACK UP TO 1/8" WIDE IN BOTTOM OF DECK EAST OVERHANG AT MID SPAN OVER SB TRAVEL LANE	3	4	4	Square Feet
12	Delamination/Spall	1 SF DELAMINATION IN BOTTOM OF DECK BAY 3 30 FT FROM BENT 2	3	1	1	Square Feet
12	Delamination/Spall	1 SF DELAMINATION LOCATED IN BOTTOM OF DECK BAY 1 OVER LEFT SHOULDER 10 FT FROM BENT 2	3	1	1	Square Feet
12	Delamination/Spall	10 FT OF DELAMINATION IN BOTTOM OF DECK AT WEST OVERHANG NEAR BENT 3	3	10	10	Square Feet
12	Delamination/Spall	12" X 4" SPALL IN BOTTOM OF DECK BAY 1 MID SPAN OVER TRAVEL LANE	3	1	1	Square Feet
12	Delamination/Spall	12" X 4" SPALL WITH EXPOSED REBAR IN BOTTOM OF DECK WEST OVERHANG AT BENT 2	3	1	1	Square Feet
12	Delamination/Spall	2 SF AREA CRACK/DELAMINATION LOCATED BOTTOM OF WEST OVERHANG OVER CENTERLINE OF SOUTH BOUND TRAVEL LANES	3	2	2	Square Feet
12	Delamination/Spall	2 SF DELAMINATION LOCATED 12 FT FROM BENT 2 UNDER EAST OVERHANG OVER LEFT SHOULDER OF SOUTH BOUND TRAVEL LANE	3	2	2	Square Feet
12	Delamination/Spall	2 SF DELAMINATION LOCATED IN BOTTOM OF DECK BAY 1 OVER CENTERLINE OF SB TRAVEL LANES	3	2	2	Square Feet
12	Delamination/Spall	2-2FT X 2FT DELAMINATION IN BOTTOM OF DECK AT EAST OVERHANG OVER LEFT SOUTH BOUND TRAVEL LANE	3	4	4	Square Feet
12	Delamination/Spall	36" LONG X 12" WIDE DELAMINATION LOCATED UNDER WEST OVERHANG AND OVER THE LEFT SOUTH BOUND TRAVEL LANE	3	3	3	Square Feet
12	Delamination/Spall	36" X 12" DELAMINATION IN BOTTOM OF DECK WEST OVERHANG 1FT FROM BENT 2	3	3	3	Square Feet
12	Delamination/Spall	4 SF CRACKING/DELAMINATION LOCATED IN EAST OVERHANG 2FT FROM BENT 2	3	4	4	Square Feet
12	Delamination/Spall	48" X 24" 2" SPALL WITH EXPOSED REBAR IN BOTTOM OF DECK EAST OVERHANG OVER TRAFFIC PAR	3	8	8	Square Feet
12	Cracking (RC and Other)	400 SF. OF TRANSVERSE AND LONGITUDINAL HAIRLINE CRACKS IN BOTTOM OF DECK	2	400	400	Square Feet
12	Delamination/Spall	120" X 6" DELAMINATION IN OUTSIDE FACE OF DECK WEST OVERHANG AT BENT 2	2	10	10	Square Feet
12	Patched Areas	10 SF. OF PATCHED AREAS IN BOTTOM OF DECK	2	10		Square Feet

**General Comments****Span 3 Beam 1****Plate Girder**

Element Number	Element Name	Total Qty	CS1 Qty	CS2 Qty	CS3 Qty	CS4 Qty	
107	Steel Open Girder/Beam	76	74	2	0	0	Feet
515	Steel Protective Coating	766	764	2	0	0	Square Feet

Element Number	Defect Type	Defect Description	CS	CS Qty	Maint Qty	
107	Corrosion	1 FT. OF PAINTED OVER PITTING UP TO 1/16" DEEP WITH RUST BLEEDING IN WEB AND BEARING STIFFENER	2	1		Feet

Element Number	Defect Type	Defect Description	CS	CS Qty	Maint Qty
107	Corrosion	AROUND END DIAPHRAGM AT BENT 2 1 FT. OF PAINTED OVER PITTING UP TO 1/16" DEEP WITH RUST BLEEDING IN WEB AND BEARING STIFFENER AROUND END DIAPHRAGM AT BENT 3	2	1	Feet
515	Effectiveness (Steel Protective Coatings)	1 SF. OF RUST BLEEDING ON BOTTOM FLANGE AT BENT 2	2	1	1 Square Feet
515	Effectiveness (Steel Protective Coatings)	1 SF. OF RUST BLEEDING ON BOTTOM FLANGE AT BENT 3	2	1	1 Square Feet

**General Comments**

END DIAPHRAGM WEST OVERHANG AT BENT 2: 20" X 8" DELAMINATION  
 END DIAPHRAGM BAY 1 AT BENT 2: 18" X 6" DELAMINATION  
 END DIAPHRAGM BAY 1 AT BENT 3: 2 - 12" X 6" DELAMINATIONS

**Span 3****Beam 2****Plate Girder**

Element Number	Element Name	Total Qty	CS1 Qty	CS2 Qty	CS3 Qty	CS4 Qty
107	Steel Open Girder/Beam	76	74	1	1	0 Feet
515	Steel Protective Coating	766	763	2	0	1 Square Feet

Element Number	Defect Type	Defect Description	CS	CS Qty	Maint Qty
107	Corrosion	1 FT. OF CORROSION WITH 11/16" REMAINING SECTION IN WEB AND 13/16" REMAINING SECTION IN BEARING STIFFENER AROUND END DIAPHRAGM AT BENT 2 (PM)	3	1	1 Feet
107	Corrosion	1 FT. OF PAINTED OVER PITTING UP TO 1/16" DEEP WITH RUST BLEEDING IN WEB AND BEARING STIFFENER AROUND END DIAPHRAGM AT BENT 3	2	1	Feet
515	Effectiveness (Steel Protective Coatings)	1 SF. OF INEFFECTIVE PROTECTIVE COATING ON WEB AND BEARING STIFFENER AT BENT 2	4	1	1 Square Feet
515	Effectiveness (Steel Protective Coatings)	1 SF. OF RUST BLEEDING ON BOTTOM FLANGE AT BENT 2	2	1	1 Square Feet
515	Effectiveness (Steel Protective Coatings)	1 SF. OF RUST BLEEDING ON BOTTOM FLANGE AT BENT 3	2	1	1 Square Feet

**General Comments**

END DIAPHRAGM BAY 2 AT BENT 2: 2 - 18" X 8" DELAMINATIONS  
 END DIAPHRAGM BAY 2 AT BENT 3: 84" X 10" DELAMINATION

**Span 3****Beam 3****Plate Girder**

Element Number	Element Name	Total Qty	CS1 Qty	CS2 Qty	CS3 Qty	CS4 Qty
107	Steel Open Girder/Beam	76	74	2	0	0 Feet
515	Steel Protective Coating	766	764	2	0	0 Square Feet

Element Number	Defect Type	Defect Description	CS	CS Qty	Maint Qty
107	Corrosion	1 FT. OF PAINTED OVER PITTING UP TO 1/16" DEEP WITH RUST BLEEDING IN WEB AND BEARING STIFFENER AROUND END DIAPHRAGM AT BENT 2	2	1	Feet
107	Corrosion	1 FT. OF PAINTED OVER PITTING UP TO 1/16" DEEP WITH RUST BLEEDING IN WEB AND BEARING STIFFENER AROUND END DIAPHRAGM AT BENT 3	2	1	Feet
515	Effectiveness (Steel Protective Coatings)	1 SF. OF RUST BLEEDING ON BOTTOM FLANGE AT BENT 2	2	1	1 Square Feet
515	Effectiveness (Steel Protective Coatings)	1 SF. OF RUST BLEEDING ON BOTTOM FLANGE AT BENT 3	2	1	1 Square Feet

**General Comments**

END DIAPHRAGM BAY 3 AT BENT 2: 12" X 4" DELAMINATION  
 END DIAPHRAGM BAY 3 AT BENT 3: 12" X 3" DELAMINATION AND 6" DIAMETER X 1" DEEP SPALL

**Span 3****Beam 4****Plate Girder**

Element Number	Element Name	Total Qty	CS1 Qty	CS2 Qty	CS3 Qty	CS4 Qty
107	Steel Open Girder/Beam	76	74	2	0	0 Feet
515	Steel Protective Coating	766	764	2	0	0 Square Feet

Element Number	Defect Type	Defect Description	CS	CS Qty	Maint Qty
107	Corrosion	1 FT. OF PAINTED OVER PITTING UP TO 1/16" DEEP WITH RUST BLEEDING IN WEB AND BEARING STIFFENER AROUND END DIAPHRAGM AT BENT 2	2	1	Feet
107	Corrosion	1 FT. OF PAINTED OVER PITTING UP TO 1/16" DEEP WITH RUST BLEEDING IN WEB AND BEARING STIFFENER AROUND END DIAPHRAGM AT BENT 3	2	1	Feet
515	Effectiveness (Steel Protective Coatings)	1 SF. OF RUST BLEEDING ON BOTTOM FLANGE AT BENT 2	2	1	1 Square Feet
515	Effectiveness (Steel Protective Coatings)	1 SF. OF RUST BLEEDING ON BOTTOM FLANGE AT BENT 3	2	1	1 Square Feet

**General Comments**

END DIAPHRAGM EAST OVERHANG AT BENT 2: 18" X 3" DELAMINATION  
 END DIAPHRAGM EAST OVERHANG AT BENT 3: 18" X 6" DELAMINATION

**Span 3****Expansion Joint****Compression Seal**

Element Number	Element Name	Total Qty	CS1 Qty	CS2 Qty	CS3 Qty	CS4 Qty
302	Compression Joint Seal	45	20	20	5	0 Feet

Element Number	Defect Type	Defect Description	CS	CS Qty	Maint Qty
302	Debris Impaction	5 FT. OF DEBRIS IMPACTION	3	5	5 Feet
302	Seal Adhesion	ADHESION FAILURE AT RANDOM LOCATIONS THROUGHOUT	2	20	Feet

**General Comments****Span 3****Left Bridge Rail****Concrete Railing**

Element Number	Element Name	Total Qty	CS1 Qty	CS2 Qty	CS3 Qty	CS4 Qty
331	Reinforced Concrete Bridge Railing	76	0	65	11	0 Feet

Element Number	Defect Type	Defect Description	CS	CS Qty	Maint Qty
331	Cracking (RC and Other)	11 - 18" TRANSVERSE CRACKS UP TO 1/16" WIDE IN CURB	3	11	17 Feet
331	Delamination/Spall	76 FT. OF ABRASION WITH EXPOSED COARSE AGGREGATE	2	63	76 Feet
331	Exposed Rebar	2 - SPALLS WITH EXPOSED REBAR UP TO 6" DIAMETER X 1/2" DEEP IN RAIL	2	2	2 Feet

**General Comments**



**Span 3 Right Bridge Rail****Concrete Railing**

Element Number	Element Name	Total Qty	CS1 Qty	CS2 Qty	CS3 Qty	CS4 Qty
331	Reinforced Concrete Bridge Railing	76	0	61	15	0 Feet

Element Number	Defect Type	Defect Description	CS	CS Qty	Maint Qty
331	Cracking (RC and Other)	15 - 18" TRANSVERSE CRACKS UP TO 1/16" WIDE IN CURB	3	15	23 Feet
331	Delamination/Spall	76 FT. OF ABRASION WITH EXPOSED COARSE AGGREGATE	2	56	76 Feet
331	Exposed Rebar	5 - SPALLS WITH EXPOSED REBAR UP TO 6" DIAMETER X 1/2" DEEP IN RAIL	2	5	5 Feet

**General Comments****Span 3 Far Bearing****Other Bearing**

Element Number	Element Name	Total Qty	CS1 Qty	CS2 Qty	CS3 Qty	CS4 Qty
316	Other Bearings	1	0	0	1	0 Each
515	Steel Protective Coating	3	3	0	0	0 Square Feet

Element Number	Defect Type	Defect Description	CS	CS Qty	Maint Qty
316	Connection	1" LONG CRACK IN WELD OF EAST STIFFENER TO VERTICAL PLATE (BOTH SIDES) PAR	3	1	1 Each

**General Comments****Span 3 Near Bearing****Other Bearing**

Element Number	Element Name	Total Qty	CS1 Qty	CS2 Qty	CS3 Qty	CS4 Qty
316	Other Bearings	1	0	1	0	0 Each
515	Steel Protective Coating	3	3	0	0	0 Square Feet

Element Number	Defect Type	Defect Description	CS	CS Qty	Maint Qty
316	Corrosion	PAINTED OVER PITTING 1/8" DEEP	2	1	Each

**General Comments****Span 3 Wearing Surface****Concrete Wearing Surface**

Element Number	Element Name	Total Qty	CS1 Qty	CS2 Qty	CS3 Qty	CS4 Qty
510	Wearing Surface	2,128	2,126	2	0	0 Square Feet

Element Number	Defect Type	Defect Description	CS	CS Qty	Maint Qty
510	Crack (Wearing Surface)	2 FT. DIAGONAL HAIRLINE CRACK AT BENT 2	2	2	2 Square Feet

**General Comments**

**Span 4 Deck****Reinforced Concrete Deck**

Element Number	Element Name	Total Qty	CS1 Qty	CS2 Qty	CS3 Qty	CS4 Qty
12	Reinforced Concrete Deck	2,016	1,708	308	0	0 Square Feet

Element Number	Defect Type	Defect Description	CS	CS Qty	Maint Qty
12	Cracking (RC and Other)	300 SF. OF TRANSVERSE HAIRLINE CRACKS WITH EFFLORESCENCE IN BOTTOM OF DECK	2	300	300 Square Feet
12	Cracking (RC and Other)	4FT X 1/16" CRACK IN NB TRAVEL LANE ADJACENT TO NORTH EXPANSION JOINT	2	4	4 Square Feet
12	Delamination/Spall	2FT LONG X 8' WIDE X 1/2" DEEP SPALL LOCATED IN BAY 3 BOTTOM OF DECK	2	2	2 Square Feet
12	Delamination/Spall	2FT LONG X 8: WIDE DELAMINATION LOCATED IN BAY 3 BOTTOM OF DECK 15 FTT FROM ABUTMENT 2	2	2	2 Square Feet

**General Comments****Span 4 Beam 1****Plate Girder**

Element Number	Element Name	Total Qty	CS1 Qty	CS2 Qty	CS3 Qty	CS4 Qty
107	Steel Open Girder/Beam	63	62	1	0	0 Feet
515	Steel Protective Coating	632	631	1	0	0 Square Feet

Element Number	Defect Type	Defect Description	CS	CS Qty	Maint Qty
107	Corrosion	1 FT. OF PAINTED OVER PITTING UP TO 1/16" DEEP WITH RUST BLEEDING IN WEB AND BEARING STIFFENER AROUND END DIAPHRAGM AT BENT 3	2	1	Feet
515	Effectiveness (Steel Protective Coatings)	1 SF. OF RUST BLEEDING ON BOTTOM FLANGE AT BENT 3	2	1	1 Square Feet

**General Comments****Span 4 Beam 2****Plate Girder**

Element Number	Element Name	Total Qty	CS1 Qty	CS2 Qty	CS3 Qty	CS4 Qty
107	Steel Open Girder/Beam	63	62	1	0	0 Feet
515	Steel Protective Coating	632	631	1	0	0 Square Feet

Element Number	Defect Type	Defect Description	CS	CS Qty	Maint Qty
107	Corrosion	1 FT. OF PAINTED OVER PITTING UP TO 1/16" DEEP WITH RUST BLEEDING IN WEB AND BEARING STIFFENER AROUND END DIAPHRAGM AT BENT 3	2	1	Feet
515	Effectiveness (Steel Protective Coatings)	1 SF. OF RUST BLEEDING ON BOTTOM FLANGE AT BENT 3	2	1	1 Square Feet

**General Comments**

**Span 4** **Beam 3**  
**Plate Girder**

Element Number	Element Name	Total Qty	CS1 Qty	CS2 Qty	CS3 Qty	CS4 Qty
107	Steel Open Girder/Beam	63	61	2	0	0 Feet
515	Steel Protective Coating	632	630	1	1	0 Square Feet

Element Number	Defect Type	Defect Description	CS	CS Qty	Maint Qty
107	Corrosion	1 FT. OF PAINTED OVER PITTING UP TO 1/16" DEEP WITH RUST BLEEDING IN WEB AND BEARING STIFFENER AROUND END DIAPHRAGM AT BENT 3	2	1	Feet
107	Corrosion	1 FT. OF SURFACE CORROSION ON TOP AND BOTTOM FLANGE AT END BENT 2	2	1	Feet
515	Effectiveness (Steel Protective Coatings)	1 SF. OF INEFFECTIVE PROTECTIVE COATING ON TOP AND BOTTOM FLANGE AT END BENT 2	3	1	1 Square Feet
515	Effectiveness (Steel Protective Coatings)	1 SF. OF RUST BLEEDING ON BOTTOM FLANGE AT BENT 3	2	1	1 Square Feet

**General Comments**

END DIAPHRAGM BAY 3 AT BENT 3: 2 SF. OF HAIRLINE MAP CRACKING IN PATCHED AREA

**Span 4** **Beam 4**  
**Plate Girder**

Element Number	Element Name	Total Qty	CS1 Qty	CS2 Qty	CS3 Qty	CS4 Qty
107	Steel Open Girder/Beam	63	61	2	0	0 Feet
515	Steel Protective Coating	632	630	1	1	0 Square Feet

Element Number	Defect Type	Defect Description	CS	CS Qty	Maint Qty
107	Corrosion	1 FT. OF PAINTED OVER PITTING UP TO 1/16" DEEP WITH RUST BLEEDING IN WEB AND BEARING STIFFENER AROUND END DIAPHRAGM AT BENT 3	2	1	Feet
107	Corrosion	1 FT. OF SURFACE CORROSION ON TOP AND BOTTOM FLANGE AT END BENT 2	2	1	Feet
515	Effectiveness (Steel Protective Coatings)	1 SF. OF INEFFECTIVE PROTECTIVE COATING ON TOP AND BOTTOM FLANGE AT END BENT 2	3	1	1 Square Feet
515	Effectiveness (Steel Protective Coatings)	1 SF. OF RUST BLEEDING ON BOTTOM FLANGE AT BENT 3	2	1	1 Square Feet

**General Comments**

**Span 4** **Expansion Joint**  
**Compression Seal**

Element Number	Element Name	Total Qty	CS1 Qty	CS2 Qty	CS3 Qty	CS4 Qty
302	Compression Joint Seal	45	21	21	3	0 Feet

Element Number	Defect Type	Defect Description	CS	CS Qty	Maint Qty
302	Debris Impaction	3 FT. OF DEBRIS IMPACTION	3	3	3 Feet
302	Seal Adhesion	ADHESION FAILURE AT RANDOM LOCATIONS THROUGHOUT	2	21	Feet

**General Comments**

**Span 4 Expansion Joint****Compression Seal**

Element Number	Element Name	Total Qty	CS1 Qty	CS2 Qty	CS3 Qty	CS4 Qty
302	Compression Joint Seal	45	20	25	0	0 Feet

Element Number	Defect Type	Defect Description	CS	CS Qty	Maint Qty
302	Debris Impaction	5 FT. OF DEBRIS IMPACTION	2	5	5 Feet
302	Seal Adhesion	ADHESION FAILURE AT RANDOM LOCATIONS THROUGHOUT	2	20	Feet

**General Comments****Span 4 Left Bridge Rail****Concrete Railing**

Element Number	Element Name	Total Qty	CS1 Qty	CS2 Qty	CS3 Qty	CS4 Qty
331	Reinforced Concrete Bridge Railing	65	0	57	8	0 Feet

Element Number	Defect Type	Defect Description	CS	CS Qty	Maint Qty
331	Cracking (RC and Other)	8 - 18" TRANSVERSE CRACKS UP TO 1/16" WIDE IN CURB	3	8	12 Feet
331	Delamination/Spall	65 FT. OF ABRASION WITH EXPOSED COARSE AGGREGATE	2	56	65 Feet
331	Exposed Rebar	1 - SPALL WITH EXPOSED REBAR UP TO 6" DIAMETER X 1/2" DEEP IN RAIL	2	1	1 Feet

**General Comments****Span 4 Right Bridge Rail****Concrete Railing**

Element Number	Element Name	Total Qty	CS1 Qty	CS2 Qty	CS3 Qty	CS4 Qty
331	Reinforced Concrete Bridge Railing	65	0	61	4	0 Feet

Element Number	Defect Type	Defect Description	CS	CS Qty	Maint Qty
331	Cracking (RC and Other)	4 - 18" TRANSVERSE CRACKS UP TO 1/16" WIDE IN CURB	3	4	6 Feet
331	Delamination/Spall	3 - SPALLS WITH EXPOSED REBAR UP TO 6" DIAMETER X 1/2" DEEP IN RAIL	2	3	3 Feet
331	Delamination/Spall	65 FT. OF ABRASION WITH EXPOSED COARSE AGGREGATE	2	58	65 Feet

**General Comments****Span 4 Far Bearing****Other Bearing**

Element Number	Element Name	Total Qty	CS1 Qty	CS2 Qty	CS3 Qty	CS4 Qty
316	Other Bearings	1	0	1	0	0 Each
515	Steel Protective Coating	2	0	0	2	0 Square Feet

Element Number	Defect Type	Defect Description	CS	CS Qty	Maint Qty
316	Corrosion	SURFACE CORROSION	2	1	Each
515	Effectiveness (Steel Protective Coatings)	2 SF. OF INEFFECTIVE PROTECTIVE COATING	3	2	2 Square Feet

**General Comments****Span 4 Near Bearing****Other Bearing**

Element Number	Element Name	Total Qty	CS1 Qty	CS2 Qty	CS3 Qty	CS4 Qty
316	Other Bearings	1	0	0	1	0 Each
515	Steel Protective Coating	3	3	0	0	0 Square Feet

Element Number	Defect Type	Defect Description	CS	CS Qty	Maint Qty
316	Connection	2" LONG CRACK IN WELD OF EAST STIFFENER TO VERTICAL PLATE PAR	3	1	1 Each

**General Comments****Span 4 Far Bearing****Other Bearing**

Element Number	Element Name	Total Qty	CS1 Qty	CS2 Qty	CS3 Qty	CS4 Qty
316	Other Bearings	1	0	1	0	0 Each
515	Steel Protective Coating	2	0	0	2	0 Square Feet

Element Number	Defect Type	Defect Description	CS	CS Qty	Maint Qty
316	Corrosion	SURFACE CORROSION	2	1	Each
515	Effectiveness (Steel Protective Coatings)	2 SF. OF INEFFECTIVE PROTECTIVE COATING	3	2	2 Square Feet

**General Comments****Span 4 Near Bearing****Other Bearing**

Element Number	Element Name	Total Qty	CS1 Qty	CS2 Qty	CS3 Qty	CS4 Qty
316	Other Bearings	1	0	1	0	0 Each
515	Steel Protective Coating	3	3	0	0	0 Square Feet

Element Number	Defect Type	Defect Description	CS	CS Qty	Maint Qty
316	Connection	1" LONG CRACK IN WELD OF WEST STIFFENER TO VERTICAL PLATE PAR	2	1	1 Each

**General Comments****Span 4 Far Bearing****Other Bearing**

Element Number	Element Name	Total Qty	CS1 Qty	CS2 Qty	CS3 Qty	CS4 Qty
316	Other Bearings	1	0	1	0	0 Each
515	Steel Protective Coating	2	0	0	2	0 Square Feet

Element Number	Defect Type	Defect Description	CS	CS Qty	Maint Qty
316	Corrosion	SURFACE CORROSION	2	1	Each
515	Effectiveness (Steel Protective Coatings)	2 SF. OF INEFFECTIVE PROTECTIVE COATING	3	2	2 Square Feet

**General Comments****Span 4 Near Bearing****Other Bearing**

Element Number	Element Name	Total Qty	CS1 Qty	CS2 Qty	CS3 Qty	CS4 Qty
316	Other Bearings	1	0	0	1	0 Each
515	Steel Protective Coating	3	1	2	0	0 Square Feet

Element Number	Defect Type	Defect Description	CS	CS Qty	Maint Qty
316	Connection	1" LONG CRACK IN WELD OF EAST STIFFENER TO VERTICAL PLATE (PM)	3		1 Each
316	Connection	2" LONG CRACK IN WELD OF WEST STIFFENER TO VERTICAL PLATE (PM)	3	1	1 Each
316	Corrosion	FRECKLED RUST	2		Each
515	Effectiveness (Steel Protective Coatings)	2 SF. OF LIMITED EFFECTIVENESS OF PROTECTIVE COATING	2	2	2 Square Feet

**General Comments****Span 4 Far Bearing****Other Bearing**

Element Number	Element Name	Total Qty	CS1 Qty	CS2 Qty	CS3 Qty	CS4 Qty
316	Other Bearings	1	0	1	0	0 Each
515	Steel Protective Coating	2	0	0	2	0 Square Feet

Element Number	Defect Type	Defect Description	CS	CS Qty	Maint Qty
316	Corrosion	SURFACE CORROSION	2	1	Each
515	Effectiveness (Steel Protective Coatings)	2 SF. OF INEFFECTIVE PROTECTIVE COATING	3	2	2 Square Feet

**General Comments****End Bent 1 Cap 1****Reinforced Concrete Pier Cap**

Element Number	Element Name	Total Qty	CS1 Qty	CS2 Qty	CS3 Qty	CS4 Qty
234	Reinforced Concrete Pier Cap	52	38	9	5	0 Feet

Element Number	Defect Type	Defect Description	CS	CS Qty	Maint Qty
234	Cracking (RC and Other)	12" HORIZONTAL CRACK 1/16" WIDE UNDER BAY 1	3	1	1 Feet
234	Cracking (RC and Other)	12" HORIZONTAL CRACK 1/8" WIDE UNDER WEST OVERHANG	3	1	1 Feet
234	Cracking (RC and Other)	3 - 12" VERTICAL CRACKS UP TO 1/16" WIDE UNDER BAY 1	3	3	3 Feet
234	Cracking (RC and Other)	3 - 12" VERTICAL HAIRLINE CRACKS UNDER BAY 3	2	3	3 Feet
234	Cracking (RC and Other)	4 - 12" VERTICAL HAIRLINE CRACKS UNDER BAY 2	2	4	4 Feet
234	Delamination/Spall	24" X 8" DELAMINATION UNDER WEST OVERHANG	2	2	2 Feet

**General Comments**

**Bent 1****Pile 1****Reinforced Concrete Column**

Element Number	Element Name	Total Qty	CS1 Qty	CS2 Qty	CS3 Qty	CS4 Qty
205	Reinforced Concrete Column	1	0	1	0	0 Each

Element Number	Defect Type	Defect Description	CS	CS Qty	Maint Qty
205	Delamination/Spall	96" X 6" DELAMINATION IN SOUTH FACE	2	1	1 Each

**General Comments****Bent 1****Cap 1****Reinforced Concrete Pier Cap**

Element Number	Element Name	Total Qty	CS1 Qty	CS2 Qty	CS3 Qty	CS4 Qty
234	Reinforced Concrete Pier Cap	38	30	8	0	0 Feet

Element Number	Defect Type	Defect Description	CS	CS Qty	Maint Qty
234	Cracking (RC and Other)	3FT HAIRLINE LONGITUDINAL AND DIAGONAL CRACK SOUTH FACE BETWEEN COLUMN 2 AND 3	2	3	Feet
234	Delamination/Spall	2 - 12" X 6" DELAMINATIONS IN BOTTOM OF CAP BETWEEN COLUMNS 1 AND 2	2	2	2 Feet
234	Delamination/Spall	24" DIAMETER DELAMINATION IN BOTTOM OF CAP BETWEEN COLUMNS 2 AND 3	2	2	2 Feet
234	Delamination/Spall	8" DIAMETER DELAMINATION IN NORTH FACE OF CAP UNDER BAY 1	2	1	1 Feet

**General Comments****End Bent 1****Abutment****Reinforced Concrete Abutment**

Element Number	Element Name	Total Qty	CS1 Qty	CS2 Qty	CS3 Qty	CS4 Qty
215	Reinforced Concrete Abutment	52	32	4	16	0 Feet

Element Number	Defect Type	Defect Description	CS	CS Qty	Maint Qty
215	Cracking (RC and Other)	10 SF. OF HAIRLINE MAP CRACKING IN BAY 3	3	10	10 Feet
215	Cracking (RC and Other)	3 - 36" VERTICAL CRACKS UP TO 1/16" WIDE IN BAY 2	3	3	9 Feet
215	Cracking (RC and Other)	3 SF. OF HAIRLINE MAP CRACKING UNDER EAST OVERHANG	3	3	3 Feet
215	Cracking (RC and Other)	3 - 24" VERTICAL HAIRLINE CRACKS IN BAY 1	2	3	Feet
215	Delamination/Spall	12" X 6" DELAMINATION IN BAY 1	2	1	1 Feet

**General Comments****End Bent 2****Cap 1****Reinforced Concrete Pier Cap**

Element Number	Element Name	Total Qty	CS1 Qty	CS2 Qty	CS3 Qty	CS4 Qty
234	Reinforced Concrete Pier Cap	52	49	0	3	0 Feet

Element Number	Defect Type	Defect Description	CS	CS Qty	Maint Qty
234	Cracking (RC and Other)	36" HORIZONTAL CRACK UP TO 1/8" WIDE UNDER BEAM 4	3	3	3 Feet

**General Comments**

4

**Bent 2****Cap 1****Reinforced Concrete Pier Cap**

Element Number	Element Name	Total Qty	CS1 Qty	CS2 Qty	CS3 Qty	CS4 Qty
234	Reinforced Concrete Pier Cap	38	14	20	4	0 Feet

Element Number	Defect Type	Defect Description	CS	CS Qty	Maint Qty
234	Cracking (RC and Other)	1 SF. OF HAIRLINE MAP CRACKING IN NORTH FACE OF CAP UNDER BAY 3	3	1	1 Feet
234	Cracking (RC and Other)	36" HORIZONTAL CRACK UP TO 1/16" WIDE IN BOTTOM OF CAP BETWEEN COLUMNS 2 AND 3	3	3	3 Feet
234	Cracking (RC and Other)	2 - 36" DIAGONAL HAIRLINE CRACKS IN SOUTH FACE OF CAP UNDER BAY 3	2	3	6 Feet
234	Cracking (RC and Other)	24" HORIZONTAL HAIRLINE CRACK IN BOTTOM OF CAP BETWEEN COLUMNS 1 AND 2	2	2	2 Feet
234	Cracking (RC and Other)	36" DIAGONAL HAIRINE CRACK IN SOUTH FACE OF CAP UNDER BEAM 3	2	3	3 Feet
234	Cracking (RC and Other)	36" DIAGONAL HAIRLINE CRACK IN SOUTH FACE OF CAP UNDER BAY 2	2	3	3 Feet
234	Cracking (RC and Other)	36" VERTICAL HAIRILNE CRACK IN SOUTH FACE OF CAP UNDER BEAM 4	2	1	3 Feet
234	Cracking (RC and Other)	36" VERTICAL HAIRLINE CRACK IN NORTH FACE OF CAP UNDER BEAM 2	2	1	3 Feet
234	Delamination/Spall	12" X 4" DELAMINATION IN BOTTOM OF CAP BETWEEN COLUMNS 2 AND 3	2	1	1 Feet
234	Delamination/Spall	18" DIAMETER DELAMINATION IN BOTTOM OF CAP BETWEEN COLUMNS 1 AND 2	2	2	2 Feet
234	Delamination/Spall	18" X 6" DELAMINATION IN TOP OF CAP UNDER BEAM 1 SPAN 2 SIDE	2	2	2 Feet
234	Delamination/Spall	24" X 2" DELAMINATION IN BOTTOM OF CAP BETWEEN COLUMNS 1 AND 2	2	2	2 Feet

**General Comments****Bent 2****Pile 1****Reinforced Concrete Column**

Element Number	Element Name	Total Qty	CS1 Qty	CS2 Qty	CS3 Qty	CS4 Qty
205	Reinforced Concrete Column	1	0	1	0	0 Each

Element Number	Defect Type	Defect Description	CS	CS Qty	Maint Qty
205	Cracking (RC and Other)	12" VERTICAL HAIRLINE CRACK IN WEST FACE OF CAP FROM BOTTOM TRAVELING UPWARDS	2		Each
205	Delamination/Spall	3" DIAMETER X 1/2" DEEP SPALL IN EAST FACE OF CAP NEAR BOTTOM	2	1	1 Each

**General Comments****Bent 2****Pile 2****Reinforced Concrete Column**

Element Number	Element Name	Total Qty	CS1 Qty	CS2 Qty	CS3 Qty	CS4 Qty
205	Reinforced Concrete Column	1	0	1	0	0 Each

Element Number	Defect Type	Defect Description	CS	CS Qty	Maint Qty
205	Cracking (RC and Other)	12" VERTICAL HAIRLINE CRACK IN EAST AND WEST FACE OF CAP FROM BOTTOM TRAVELING UPWARDS	2	1	Each



**General Comments****Bent 2 Pile 3****Reinforced Concrete Column**

Element Number	Element Name	Total Qty	CS1 Qty	CS2 Qty	CS3 Qty	CS4 Qty
205	Reinforced Concrete Column	1	0	1	0	0 Each

Element Number	Defect Type	Defect Description	CS	CS Qty	Maint Qty
205	Cracking (RC and Other)	12" VERTICAL HAIRLINE CRACK IN ALL FACES OF CAP FROM BOTTOM TRAVELING UPWARDS	2	1	Each

**General Comments****End Bent 2 Abutment****Reinforced Concrete Abutment**

Element Number	Element Name	Total Qty	CS1 Qty	CS2 Qty	CS3 Qty	CS4 Qty
215	Reinforced Concrete Abutment	52	45	0	7	0 Feet

Element Number	Defect Type	Defect Description	CS	CS Qty	Maint Qty
215	Cracking (RC and Other)	3 SF. OF HAIRLINE MAP CRACKING UNDER EAST OVERHANG WITH 4FT X 1/16" HORIZONTAL CRACK	3	7	7 Feet

**General Comments****Bent 3 Cap 1****Reinforced Concrete Pier Cap**

Element Number	Element Name	Total Qty	CS1 Qty	CS2 Qty	CS3 Qty	CS4 Qty
234	Reinforced Concrete Pier Cap	38	31	7	0	0 Feet

Element Number	Defect Type	Defect Description	CS	CS Qty	Maint Qty
234	Cracking (RC and Other)	12" VERTICAL HAIRLINE CRACK IN NORTH FACE OF CAP UNDER BEAM 1	2	1	Feet
234	Cracking (RC and Other)	36" VERTICAL HAIRLINE CRACK IN SOUTH FACE UNDER BEAM 3	2	1	3 Feet
234	Cracking (RC and Other)	4-24" LONG TRANSVERSE HAIRLINE CRACKS BOTTOM OF CAP BETWEEN PILE 2 AND 3	2	4	Feet
234	Delamination/Spall	1 SF DELAMINATION ON BOTTOM OF CAP BETWEEN PILES 1 AND 2	2	1	1 Feet

**General Comments****Approach 1****Reinforced Concrete Approach Slab**

Element Number	Element Name	Total Qty	CS1 Qty	CS2 Qty	CS3 Qty	CS4 Qty
321	Reinforced Concrete Approach Slabs	435	420	0	15	0 Square Feet

Element Number	Defect Type	Defect Description	CS	CS Qty	Maint Qty
321	Cracking (RC and Other)	15 SF. OF HAIRLINE MAP CRACKING	3	15	15 Square Feet

**General Comments**

**Approach 2**

**Reinforced Concrete Approach Slab**

Element Number	Element Name	Total Qty	CS1 Qty	CS2 Qty	CS3 Qty	CS4 Qty
321	Reinforced Concrete Approach Slabs	435	425	0	10	0 Square Feet

---

Element Number	Defect Type	Defect Description	CS	CS Qty	Maint Qty
321	Cracking (RC and Other)	10 SF. OF HAIRLINE MAP CRACKING	3	10	10 Square Feet

**General Comments**

## Elements Verified

Location	Name	Component	Element Name	Amount
Span 1	Deck	Reinforced Concrete Deck	Reinforced Concrete Deck	2016
Span 1	Beam 1	Plate Girder	Steel Open Girder/Beam	63
Span 1	Beam 2	Plate Girder	Steel Open Girder/Beam	63
Span 1	Beam 3	Plate Girder	Steel Open Girder/Beam	63
Span 1	Beam 4	Plate Girder	Steel Open Girder/Beam	63
Span 1	Left Bridge Rail	Concrete Railing	Reinforced Concrete Bridge Railing	65
Span 1	Right Bridge Rail	Concrete Railing	Reinforced Concrete Bridge Railing	65
Span 1	Expansion Joint	Compression Seal	Compression Joint Seal	45
Span 1	Near Bearing	Other Bearing	Other Bearings	1
Span 1	Far Bearing	Other Bearing	Other Bearings	1
Span 1	Near Bearing	Other Bearing	Other Bearings	1
Span 1	Far Bearing	Other Bearing	Other Bearings	1
Span 1	Near Bearing	Other Bearing	Other Bearings	1
Span 1	Far Bearing	Other Bearing	Other Bearings	1
Span 1	Near Bearing	Other Bearing	Other Bearings	1
Span 1	Far Bearing	Other Bearing	Other Bearings	1
Span 2	Deck	Reinforced Concrete Deck	Reinforced Concrete Deck	2388
Span 2	Beam 1	Plate Girder	Steel Open Girder/Beam	76
Span 2	Beam 2	Plate Girder	Steel Open Girder/Beam	76
Span 2	Beam 3	Plate Girder	Steel Open Girder/Beam	76
Span 2	Beam 4	Plate Girder	Steel Open Girder/Beam	76
Span 2	Left Bridge Rail	Concrete Railing	Reinforced Concrete Bridge Railing	76
Span 2	Right Bridge Rail	Concrete Railing	Reinforced Concrete Bridge Railing	76
Span 2	Expansion Joint	Compression Seal	Compression Joint Seal	45
Span 2	Near Bearing	Other Bearing	Other Bearings	1
Span 2	Far Bearing	Other Bearing	Other Bearings	1
Span 2	Near Bearing	Other Bearing	Other Bearings	1
Span 2	Far Bearing	Other Bearing	Other Bearings	1
Span 2	Near Bearing	Other Bearing	Other Bearings	1
Span 2	Far Bearing	Other Bearing	Other Bearings	1
Span 2	Near Bearing	Other Bearing	Other Bearings	1
Span 2	Far Bearing	Other Bearing	Other Bearings	1
Span 3	Deck	Reinforced Concrete Deck	Reinforced Concrete Deck	2388
Span 3	Beam 1	Plate Girder	Steel Open Girder/Beam	76
Span 3	Beam 2	Plate Girder	Steel Open Girder/Beam	76
Span 3	Beam 3	Plate Girder	Steel Open Girder/Beam	76
Span 3	Beam 4	Plate Girder	Steel Open Girder/Beam	76
Span 3	Left Bridge Rail	Concrete Railing	Reinforced Concrete Bridge Railing	76
Span 3	Right Bridge Rail	Concrete Railing	Reinforced Concrete Bridge Railing	76
Span 3	Expansion Joint	Compression Seal	Compression Joint Seal	45
Span 3	Near Bearing	Other Bearing	Other Bearings	1
Span 3	Far Bearing	Other Bearing	Other Bearings	1
Span 3	Near Bearing	Other Bearing	Other Bearings	1
Span 3	Far Bearing	Other Bearing	Other Bearings	1
Span 3	Near Bearing	Other Bearing	Other Bearings	1

## Elements Verified

Location	Name	Component	Element Name	Amount
Span 3	Far Bearing	Other Bearing	Other Bearings	1
Span 3	Near Bearing	Other Bearing	Other Bearings	1
Span 3	Far Bearing	Other Bearing	Other Bearings	1
Span 4	Deck	Reinforced Concrete Deck	Reinforced Concrete Deck	2016
Span 4	Beam 1	Plate Girder	Steel Open Girder/Beam	63
Span 4	Beam 2	Plate Girder	Steel Open Girder/Beam	63
Span 4	Beam 3	Plate Girder	Steel Open Girder/Beam	63
Span 4	Beam 4	Plate Girder	Steel Open Girder/Beam	63
Span 4	Left Bridge Rail	Concrete Railing	Reinforced Concrete Bridge Railing	65
Span 4	Right Bridge Rail	Concrete Railing	Reinforced Concrete Bridge Railing	65
Span 4	Expansion Joint	Compression Seal	Compression Joint Seal	45
Span 4	Expansion Joint	Compression Seal	Compression Joint Seal	45
Span 4	Near Bearing	Other Bearing	Other Bearings	1
Span 4	Far Bearing	Other Bearing	Other Bearings	1
Span 4	Near Bearing	Other Bearing	Other Bearings	1
Span 4	Far Bearing	Other Bearing	Other Bearings	1
Span 4	Near Bearing	Other Bearing	Other Bearings	1
Span 4	Far Bearing	Other Bearing	Other Bearings	1
Span 4	Near Bearing	Other Bearing	Other Bearings	1
Span 4	Far Bearing	Other Bearing	Other Bearings	1
Bent 1	Cap 1	Reinforced Concrete Pier Cap	Reinforced Concrete Pier Cap	38
Bent 1	Pile 1	Reinforced Concrete Column	Reinforced Concrete Column	1
Bent 1	Pile 2	Reinforced Concrete Column	Reinforced Concrete Column	1
Bent 1	Pile 3	Reinforced Concrete Column	Reinforced Concrete Column	1
End Bent 1	Cap 1	Reinforced Concrete Pier Cap	Reinforced Concrete Pier Cap	52
End Bent 1	Abutment	Reinforced Concrete Abutment	Reinforced Concrete Abutment	52
Bent 2	Cap 1	Reinforced Concrete Pier Cap	Reinforced Concrete Pier Cap	38
Bent 2	Pile 1	Reinforced Concrete Column	Reinforced Concrete Column	1
Bent 2	Pile 2	Reinforced Concrete Column	Reinforced Concrete Column	1
Bent 2	Pile 3	Reinforced Concrete Column	Reinforced Concrete Column	1
End Bent 2	Cap 1	Reinforced Concrete Pier Cap	Reinforced Concrete Pier Cap	52
End Bent 2	Abutment	Reinforced Concrete Abutment	Reinforced Concrete Abutment	52
Bent 3	Cap 1	Reinforced Concrete Pier Cap	Reinforced Concrete Pier Cap	38
Bent 3	Pile 1	Reinforced Concrete Column	Reinforced Concrete Column	1
Bent 3	Pile 2	Reinforced Concrete Column	Reinforced Concrete Column	1
Bent 3	Pile 3	Reinforced Concrete Column	Reinforced Concrete Column	1

# General Inspection Notes

# National Bridge and NC Inspection Items

Structure Number: 770100

Inspection Date: 05/17/2019

## National Bridge Inventory Items

Item	Grade Scale	Grade
Item 58: Deck	0 - 9 , N	6
Item 59: Superstructure	0 - 9 , N	5
Item 60: Substructure	0 - 9 , N	5
Item 61: Channel and Channel Protection	0 - 9 , N	N
Item 62: Culvert	0 - 9 , N	N
Item 71: Waterway Adequacy	0 - 9 , N	N
Item 72: Approach Roadway Alignment	0 - 9 , N	8

Note: If NBI Inspection Item is not present, code NBI item with "N"

## NC SMU Inspection Items

Item	Grade Scale	Grade	Maint. Qty.	Maint. Code
Deck Debris	G, F, P, or C	G	0	3376
Drainage System	G, F, P, or C	G	0	3332
Utilities	G, F, P, or C			
Slope Protection	G, F, P, or C	G	0	3352
Scour	G, F, P, or C			
Wingwall	G, F, P, or C	G	0	3350
Field Scour Evaluation				
Drift	G, F, P, or C			
Fender System	G, F, P, or C		0	3364
Movable Span Machinery	G, F, P, or C			
Response to Live Load	G, F, P, or C	G		
Estimated Remaining Life	0 - 100 Years			
Superstructure Paint Code		I		

Note: If NC SMU Inspection Item is not present, leave NC SMU item blank

## Inspection Information

Item	Grade Scale	Grade
Sign Noticed Issued	YES/NO	N
Priority Maintenance Request Submitted	YES/NO	Y
Inspection Time	Hours	10
Traffic Control Time	Hours	0
Snooper Time	Hours	0
Ladder Used	YES/NO	Y
Bucket Truck Used	YES/NO	N
Boat Used	YES/NO	N
Other Equipment Used	YES/NO	N

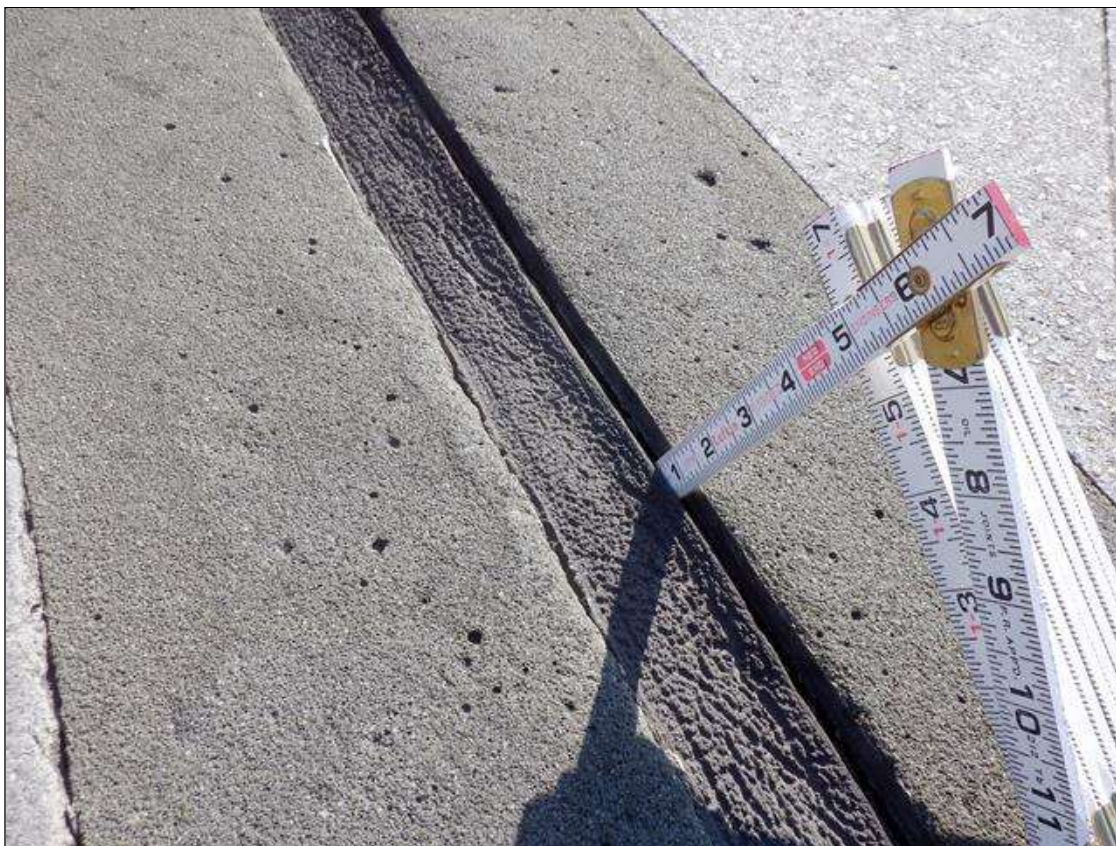
# National Bridge and NC SMU Inspection Item Details

Structure Number: 770100

Inspection Date: 05/17/2019

---

Item	Grade	Maint Code	Qty.
Details			



Expansion Joint : ADHESION FAILURE AT RANDOM LOCATIONS THROUGHOUT



Span 4 Left Bridge Rail: 1 - SPALL WITH EXPOSED REBAR UP TO 6" DIAMETER X 1/2" DEEP IN RAIL





Span 4 Left Bridge Rail: 8 - 18" TRANSVERSE CRACKS UP TO 1/16" WIDE IN CURB



Span 3 Right Bridge Rail: 5 - SPALLS WITH EXPOSED REBAR UP TO 6" DIAMETER X 1/2" DEEP IN RAIL





End Bent 1 Abutment/Backwall : 3 - 24" VERTICAL HAIRLINE CRACKS IN BAY 1



End Bent 1 Abutment/Backwall : 12" X 6" DELAMINATION IN BAY 1



End Bent 1 Cap 1: 3 - 12" VERTICAL CRACKS UP TO 1/16" WIDE UNDER BAY 1



Span 1 Deck: 300 SF. OF TRANSVERSE HAIRLINE CRACKS IN BOTTOM OF DECK





Span 1 Deck: 14 - 24" TRANSVERSE HAIRLINE CRACKS IN BOTTOM OF DECK EAST OVERHANG



Span 1 Deck: 25 SF. OF PATCHED AREAS IN BOTTOM OF DECK



Span 1 Deck: 2 - 12" DIAMETER DELAMINATIONS IN BOTTOM OF DECK 20 FT. FROM BENT 1 BAY 3



Span 1 Beam 1 Far Bearing: 2" LONG CRACK IN WELD OF EAST STIFFENER TO VERTICAL PLATE PAR





Span 1 Beam 2 Far Bearing: 2" LONG CRACK IN WELD OF EAST STIFFENER TO VERTICAL PLATE (BOTH PLATES) PAR



Span 1 Beam 3 Far Bearing: 1" LONG CRACK IN WELD OF WEST STIFFENER TO VERTICAL PLATE (BOTH PLATES) PAR



Span 1 Beam 4 Far Bearing: 1" LONG CRACK IN WELD OF EAST STIFFENER TO VERTICAL PLATE (BOTH PLATES) PAR



END DIAPHRAGM EAST OVERHANG AT BENT 1: 12" X 4" DELAMINATION





Bent 1 Cap 1: 24" DIAMETER DELAMINATION IN BOTTOM OF CAP BETWEEN COLUMNS 2 AND 3



Bent 1 Pile 1: 96" X 6" DELAMINATION IN SOUTH FACE





Span 2 Beam 1 Far Bearing: 1" LONG CRACK IN WELD OF EAST STIFFENER TO VERTICAL PLATE (BOTH PLATES) PAR



Bent 2 Cap 1: 18" X 6" DELAMINATION IN TOP OF CAP UNDER BEAM 1 SPAN 2 SIDE



END DIAPHRAGM BAY 2 AT BENT 2: 2 - 6" DIAMETER DELAMINATIONS



Span 2 Beam 3 Far Bearing: 1" LONG CRACK IN WELD OF WEST STIFFENER TO VERTICAL PLATE (BOTH SIDES) PAR





END DIAPHRAGM EAST OVERHANG AT BENT 2: 14" X 3" X 2" DEEP SPALL WITH EXPOSED REBAR



Span 2 Deck: 12" X 6" SPALL IN BOTTOM OF DECK EAST OVERHANG NEAR MIDSPAN OVER TRAFFIC PAR



Span 2 Deck: 12" DIAMETER SPALL IN BOTTOM OF DECK BAY 1 OVER TRAFFIC PAR



Span 2 Deck: 12" DIAMETER SPALL IN BOTTOM OF DECK EAST OVERHANG OVER TRAFFIC PAR





Span 3 Beam 1 Far Bearing: 1" LONG CRACK IN WELD OF EAST STIFFENER TO VERTICAL PLATE (BOTH SIDES)  
PAR



Span 4 Beam 2 Near Bearing: 2" LONG CRACK IN WELD OF EAST STIFFENER TO VERTICAL PLATE PAR



Span 4 Beam 3 Near Bearing: 1" LONG CRACK IN WELD OF WEST STIFFENER TO VERTICAL PLATE PAR



END DIAPHRAGM BAY 2 AT BENT 3: 84" X 10" DELAMINATION





Span 3 Deck: 10 FT OF DELAMINATION IN BOTTOM OF DECK AT WEST OVERHANG NEAR BENT 3



Span 3 Deck: 48" X 24" X 2" SPALL WITH EXPOSED REBAR IN BOTTOM OF DECK EAST OVERHANG OVER TRAFFIC PAR



Span 3 Deck: 2-2FTX2FT DELAMINATION IN BOTTOM OF DECK AT EAST OVERHANG NEAR BENT 2 OVER SHOULDER



End Bent 2 Abutment/Backwall : 3 SF. OF HAIRLINE MAP CRACKING UNDER EAST OVERHANG WITH 4FT X 1/16" HORIZONTAL CRACK





End Bent 2 Cap 1: 36" HORIZONTAL CRACK UP TO 1/8" WIDE UNDER BEAM 4



Span 4 Deck: 2FT LONG X 8' WIDE X 1/2" DEEP SPALL LOCATED IN BAY 3 BOTTOM OF DECK



Span 3 Deck: 2 SF DELAMINATION LOCATED 12 FT FROM BENT 2 UNDER EAST OVERHANG OVER LEFT SHOULDER OF SB TRAVEL LANE



Span 3 Deck: 1 SF DELAMINATION IN BOTTOM OF DECK BAY 3 30 FT FROM BENT 2



Span 3 Deck: 2 SF DELAMINATION LOCATED IN BOTTOM OF DECK BAY 1 OVER CENTERLINE OF SB TRAVEL LANES



Span 3 Deck: 36" LONG X 12" WIDE DELAMINATION LOCATED UNDER WEST OVERHANG AND OVER THE LEFT SB TRAVEL LANE





COVER SHEET PHOTO LOOKING NORTH



SOUTH APPROACH



LEFT GUARD RAIL RIGHT RAIL SIMILAR



LOOKING WEST





LOOKING EAST



NORTH APPROACH





LOOKING SOUTH



NW GUARD RAIL END TERMINAL





NW GUARD RAIL MIN POST SPACING



NW GUARD RAIL POST SPACING AT BRIDGE ATTACHMENT





NW GUARD RAIL BRIDGE ATTACHMENT



ABUTMENT 1



ABUTMENT 1 BEAM 3 BEARING



BENT 1





SPAN 1 SUPERSTRUCTURE



BENT 1 BEAM 1 BEARING



WEST ELEVATION



SPAN 2 THRU LANES





EAST ELEVATION



SPAN 3 THRU LANES



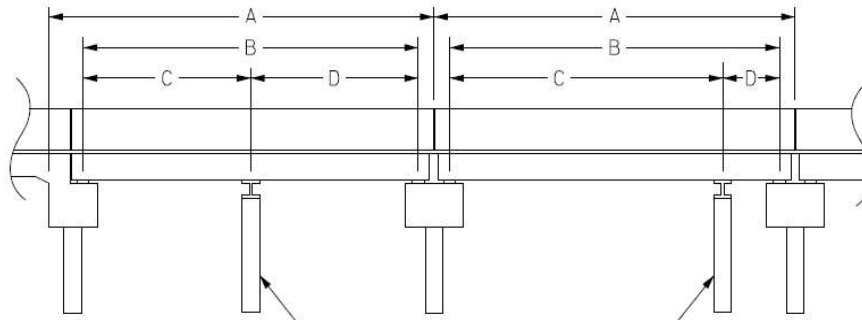
ABUTMENT 2

# Structure Data Worksheet

## Span Profile

County: **ROBESON**

Structure Number: **770100**



A: SPAN LENGTH  
 B: BEARING TO BEARING  
 C: DISTANCE FROM NEAR BEARING  
 D: DISTANCE TO FAR BEARING

Span Number	Span Length	Bearing to Bearing	Crutch/ Helper Bent	Distance to Near Bearing	Distance to Far Bearing
1	64.167	62.250			
2	76.000	74.667			
3	76.000	74.667			
4	64.167	62.250			

NATIONAL BRIDGE INVENTORY----- STRUCTURE INVENTORY AND APPRAISAL

Run Date: 09/18/2019

**IDENTIFICATION**

(1) STATE NAME -NORTH CAROLINA BRIDGE **770100**  
 (8) STRUCTURE NUMBER(FEDERAL) 000000001550100  
 (5) INVENTORY ROUTE (ON/UNDER) - ON 21003010  
 (2) STATE HIGHWAY DEPARTMENT DISTRICT 1  
 (3) COUNTY CODE 155 (4) PLACE CODE 0  
 (6) FEATURE INTERSECTED - I95  
 (7) FACILITY CARRIED US301  
 (9) LOCATION 0.5 MI.S.JCT.SR1727  
 (11)MILEPOINT 0  
 (16)LAT 34° 50' 0.83" (17)LONG 78° 58' 42.65"  
 (98)BORDER BRIDGE STATE CODE PCT SHARE  
 (99)BORDER BRIDGE STRUCTURE NO

SUFFICIENCY RATING = 70  
 STATUS = Not Deficient

**CLASSIFICATION CODE**

(112)NBIS BRIDGE SYSTEM - YES  
 (104)HIGHWAY SYSTEM Is not on NHS 0  
 (26) FUNCTIONAL CLASS - Major Collector 07  
 (100)STRAHNET HIGHWAY - Not a STRAHNET Route 0  
 (101)PARALLEL STRUCTURE - No Parallel Structure N  
 (102)DIRECTION OF TRAFFIC - 2-way Traffic 2  
 (103)TEMPORARY STRUCTURE -  
 (110)DESIGNATED NATIONAL NETWORK - Not on the National Network 0  
 (20) TOLL On Free Road 3  
 (31) MAINTAIN - State Highway Agency 01  
 (22) OWNER - State Highway Agency 01  
 (37) HISTORICAL SIGNIFICANCE - Not Eligible 5

**STRUCTURE TYPE AND MATERIAL**

(43) STRUCTURE TYPE MAIN: Steel  
 TYPE - Stringer Mutlibeam or Girder CODE 302  
 (44) STRUCTURE TYPE APPR :  
 TYPE - CODE 000  
 (45) NUMBER OF SPANS IN MAIN UNIT 4  
 (46) NUMBER OF APPROACH SPANS  
 (107)DECK STRUCTURE TYPE - 1 CODE  
 (108)WEARING SURFACE / PROTECTIVE SYSTEM :  
 (A) TYPE OF WEARING SURFACE - Latex Concrete CODE 3  
 (B) TYPE OF MEMBRANE - None CODE 0  
 (C) TYPE OF DECK PROTECTION - Epoxy Coating Reinforcing CODE 1

**CONDITION CODE**

(58) DECK 6  
 (59) SUPERSTRUCTURE 5  
 (60) SUBSTRUCTURE 5  
 (61) CHANNEL & CHANNEL PROTECTION N  
 (62) CULVERTS N

**LOAD RATING AND POSTING CODE**

(31) DESIGN LOAD HS 20 + MOD 6  
 (63) OPERATING RATING METHOD - Load Factor 1  
 (64) OPERATING RATING - HS-47 84  
 (65) INVENTORY RATING METHOD - Load Factor 1  
 (66) INVENTORY RATING - HS-28 50  
 (70) BRIDGE POSTING - No Posting Required 5  
 (41) STRUCTURE OPEN, POSTED ,OR CLOSED A  
 DESCRIPTION - Open, No Restriction

**AGE AND SERVICE**

(27) YEAR BUILT 1959  
 (106)YEAR RECONSTRUCTED  
 (42) TYPE OF SERVICE : ON - Overpass - Interchange  
 UNDER - Highway CODE 61  
 (28) LANES: ON STRUCTURE 2 UNDER STRUCTURE 4  
 (29) AVERAGE DAILY TRAFFIC 3900  
 (30) YEAR OF ADT 2015 (109) TRUCK ADT PCT 7%  
 (19) BYPASS OR DETOUR LENGTH 0 MI

**APPRAISAL CODE**

(67) STRUCTURAL EVALUATION 5  
 (68) DECK GEOMETRY 4  
 (69) UNDERCLEARANCES,VERTI & HORIZ 4  
 (71) WATERWAY ADEQUACY N  
 (72) APPROACH ROADWAY ALIGNMENT 8  
 (36) TRAFFIC SAFETY FEATURES 0111  
 (113)SCOUR CRITICAL BRIDGES N

**GEOMETRIC DATA**

(48) LENGTH OF MAXIMUM SPAN 75 FT  
 (49) STRUCTURE LENGTH 280 FT  
 (50)CURB OR SIDEWALK: LEFT 1.7085 FT RIGHT 1.7085 FT  
 (51) BRIDGE ROADWAY WIDTH CURB TO CURB 28 FT  
 (52) DECK WIDTH OUT TO OUT 33.417 FT  
 (32) APPROACH ROADWAY WIDTH (W/SHOULDERS) 29 FT  
 (33) BRIDGE MEDIAN - No Median CODE 0  
 (34) SKEW 45° (35) STRUCTURE FLARED 0  
 (10) INVENTORY ROUTE MIN VERT CLEAR 999.9 FT  
 (47) INVENTORY ROUTE TOTAL HORIZ CLEAR 28 FT  
 (53) MIN VERT CLEAR OVER BRIDGE RDWY 999.9 FT  
 (54) MIN VERT UNDERCLEAR REF Highway 16.3 FT  
 (55) MIN LAT UNDERCLEAR RT REF Highway 10 FT  
 (56) MIN LAT UNDERCLEAR LT REF - 16 FT

**PROPOSED IMPROVEMENTS CODE**

(75) TYPE OF WORK - CODE  
 (76) LENGTH OF STRUCTURE IMPROVEMENT  
 (94) BRIDGE IMPROVEMENT COST  
 (95) ROADWAY IMPROVEMENT COST  
 (96) TOTAL PROJECT COST  
 (97) YEAR OF IMPROVEMENT COST ESTIMATE  
 (114)FUTURE ADT 7800 (115) YEAR FUTURE ADT 2025

**INSPECTIONS**

(90) INSPECTION DATE 05/17/2019  
 (92) CRITICAL FEATURE INSPECTION : (93) CFI DATE  
 A) FRACTURE CRIT DETAIL - NO A)  
 B) UNDERWATER INSP - NO B)  
 C) OTHER SPECIAL INSP NO C)  
 SCOUR

**NAVIGATION DATA**

(38) NAVIGATION CONTROL - Not Applicable CODE N  
 (111)PIER PROTECTION - CODE  
 (39) NAVIGATION VERTICAL CLEARANCE 0  
 (116)VERT - LIFT BRIDGE NAV MIN VERT CLEAR FT  
 (40) NAVIGATION HORIZONTAL CLEARANCE 0 FT



Structure No: 770100

County: ROBESON

Run Date:

Span Number	Feature Intersected	Inventory Route	Minimum Maximum Vertical Clearance	Milepoint	Base Highway Network	LRS Inventory Route	Toll	Functional Classification	Numer of Lanes	Average Daily Traffic	Year of Average Daily Traffic	Total Horizontal Clearance	See Note 1							
													Reference Feature	Minimum Vertical Underclearance	Right Lateral Underclearance	Left Lateral Underclearance	Underclearance Appraisal Grade	STRAHNET Highway Designator	Direction of Traffic	Highway System of Route
	6	5	10	11	12	13	20	26	28	29	30	47	54A	54	55	56	69	100	102	104
2	I95N	11000950	16.2	32.90	1	10095		1	2	22500	2015	47.21	H	16	9.92	15.5	9	1	1	1
3	I95S	11000950	16.4	32.90	1	10095		1	2	22500	2015	48	H	16.3	10	16	9	1	1	1

Note 1: Items 54, 55, and 56 are not reported FHWA under route data points but are collected for each under route to determine the minimum value for Underclearance Appraisal Item 69. The under route that generates the lowest Underclearance Appraisal value will be reported on the Facility Carried record.

**BRIDGE MANAGEMENT UNIT**

**DATA ON EXISTING STRUCTURE**

Run Date: 09/18/2019

COUNTY : ROBESON                      DIVISION : 6                      DISTRICT : 1                      STRUCTURE NUMBER : 770100                      LENGTH : 280 FEET

ROUTE CARRIED : US301                      FEATURE INTERSECTED : I95

LOCATED : 0.5 MI.S.JCT.SR1727                      BRIDGE NAME :                      CITY :

FUNC. CLASS : 07                      SYST.ON : FA                      SYST.UNDER : NFA                      ADT & YR : 3900 2015                      RAIL TYPE : LT 111 RT 111

BUILT : 1959                      BY : SHC                      PROJ : 8.13962                      FED.AID PROJ :                      DESIGN LOAD : HS 20 + MOD

REHAB :                      BY : DOH                      PROJ : 41927.3.1                      ALIGNMENT : TAN                      SKEW : 45                      LANES : ON 2 UNDER 4

NAVIGATION : VC 0 FT                      HC 0 FT                      HT. CRN. TO BED : 0 FT                      WATER DEPTH : 0 FT

SUPERSTRUCTURE : REINFORCED CONCRETE FLOOR ON I-BEAMS

SUBSTRUCTURE : E.BTS:RC CAPS/PPC PILES ; BTS:RCP&B/PPC PILE FTGS.

SPANS : 1@64'-2"; 2@76'; 1@64'-2"

BEAMS OR GIRDERS : SPNS1-4:4LNS36 I-BEAMS@8'CTS.

FLOOR : 7.25 RC/1.25" LATEX MODIFIED CONCRETE OVERLAY                      ENCROACHMENT :                      DECK (OUT TO OUT) : 33.417 FT

CLEAR ROADWAY : 28 FT                      BETWEEN RAILS : 31.417 FT                      SIDEWALK OR CURB : LT 1.7085 FT RT 1.7085 FT

VERT.CL.OVER : 999.9 FT

INV.RTG. : HS-28                      OPE.RTG. : HS-47                      CONTR.MEMBER : I Bm A                      POSTED : SV                      TTST                      DATE

SYSTEM : Primary U.S. Route                      GREEN LINE ROUTE : Y

**UNDER ROUTES AND CLEARANCES**

Span	Route Description	Vertical Clearances		Horizontal Clearances		
		MMVC	MVC	Total	Left	Right
2	I95N	16.20	16	47.2090	15.50	9.9170
3	I95S	16.40	16.30	48	16	10

*Note: All measurements are in feet.*

REMARKS :




# BRIDGE INSPECTOR'S RECOMMENDATION FOR MAINTENANCE REPAIRS

Bridge: 770100

County ROBESON

Date: 05/17/2019

**These Repairs Should Be Made Within Twelve Months From Date Of This Inspection**

MMS Code	Description of Function	Unit	Quantity	Remarks	Est. Cost
 3326	Maintain Concrete Deck	SF	1	Span 2 Deck: 12" X 6" SPALL IN BOTTOM OF DECK EAST OVERHANG NEAR MIDSPAN OVER TRAFFIC PAR	
 3326	Maintain Concrete Deck	SF	8	Span 3 Deck: 48" X 24" 2" SPALL WITH EXPOSED REBAR IN BOTTOM OF DECK EAST OVERHANG OVER TRAFFIC PAR	
 3326	Maintain Concrete Deck	SF	4	Span 3 Deck: 48" X 12" X 2" SPALL /DELAMINATION IN BOTTOM OF DECK EAST OVERHANG OVER TRAFFIC PAR	
3326	Maintain Concrete Deck	SF	1	Span 2 Deck: 12" DIAMETER SPALL IN BOTTOM OF DECK EAST OVERHANG OVER TRAFFIC PAR	
3334	Bridge Bearings	EA	1	Span 2 Beam 1 Far Bearing: 1" LONG CRACK IN WELD OF EAST STIFFENER TO VERTICAL PLATE (BOTH PLATES) PAR	
3334	Bridge Bearings	EA	1	Span 2 Beam 3 Far Bearing: 1" LONG CRACK IN WELD OF WEST STIFFENER TO VERTICAL PLATE (BOTH SIDES) PAR	
3334	Bridge Bearings	EA	1	Span 3 Beam 1 Far Bearing: 1" LONG CRACK IN WELD OF EAST STIFFENER TO VERTICAL PLATE (BOTH SIDES) PAR	
3334	Bridge Bearings	EA	1	Span 1 Beam 1 Far Bearing: 2" LONG CRACK IN WELD OF EAST STIFFENER TO VERTICAL PLATE PAR	
3334	Bridge Bearings	EA	1	Span 1 Beam 2 Far Bearing: 2" LONG CRACK IN WELD OF EAST STIFFENER TO VERTICAL PLATE (BOTH PLATES) PAR	
3334	Bridge Bearings	EA	1	Span 1 Beam 3 Far Bearing: 1" LONG CRACK IN WELD OF WEST STIFFENER TO VERTICAL PLATE (BOTH PLATES) PAR	
3334	Bridge Bearings	EA	1	Span 1 Beam 4 Far Bearing: 1" LONG CRACK IN WELD OF EAST STIFFENER TO VERTICAL PLATE (BOTH PLATES) PAR	
3334	Bridge Bearings	EA	1	Span 4 Beam 2 Near Bearing: 2" LONG CRACK IN WELD OF EAST STIFFENER TO VERTICAL PLATE PAR	
3334	Bridge Bearings	EA	1	Span 4 Beam 3 Near Bearing: 1" LONG CRACK IN WELD OF WEST STIFFENER TO VERTICAL PLATE PAR	

**Key**

 Priority Maintenance Item

 Critical Finding Item

 Priority Maintenance Level Not Determined

**BRIDGE INSPECTOR'S RECOMMENDATION FOR PRIORITY MAINTENANCE REPAIRS**

Bridge: 770100                      County ROBESON

THE FOLLOWING MAINTENANCE ITEMS HAVE BEEN SUBMITTED IN CONJUNCTION WITH A PRIORITY MAINTENANCE REQUEST

MMS Code	MMS Description	Quantity
3326	Maintain Concrete Deck	1              SF
Location:		
Bent/Span No.		
Priority Level	Status	
Priority Maintenance	Division Maintenance Work In Process	
Submitted Date:	Submitted By:	Assisted By:
05/17/2019	JOHN EUBANKS	
Details		
Span 2 Deck: 12" X 6" SPALL IN BOTTOM OF DECK EAST OVERHANG NEAR MIDSPAN OVER TRAFFIC PAR		

MMS Code	MMS Description	Quantity
3326	Maintain Concrete Deck	8              SF
Location:		
Bent/Span No.		
Priority Level	Status	
Priority Maintenance	Division Maintenance Work In Process	
Submitted Date:	Submitted By:	Assisted By:
05/17/2019	JOHN EUBANKS	
Details		
Span 3 Deck: 48" X 24" 2" SPALL WITH EXPOSED REBAR IN BOTTOM OF DECK EAST OVERHANG OVER TRAFFIC PAR		



**BRIDGE INSPECTOR'S RECOMMENDATION FOR PRIORITY MAINTENANCE REPAIRS**

Bridge: 770100                      County ROBESON

THE FOLLOWING MAINTENANCE ITEMS HAVE BEEN SUBMITTED IN CONJUNCTION WITH A PRIORITY MAINTENANCE REQUEST

MMS Code	MMS Description	Quantity
3326	Maintain Concrete Deck	4              SF
Location:		
Bent/Span No.		
Priority Level	Status	
Priority Maintenance	Division Maintenance Work In Process	
Submitted Date:	Submitted By:	Assisted By:
05/17/2019	JOHN EUBANKS	
Details		
Span 3 Deck: 48" X 12" X 2" SPALL /DELAMINATIONIN BOTTOM OF DECK EAST OVERHANG OVER TRAFFIC PAR		

MMS Code	MMS Description	Quantity
3326	Maintain Concrete Deck	1              SF
Location:		
Bent/Span No.		
Priority Level	Status	
Recommended	Routine Maintenance	
Submitted Date:	Submitted By:	Assisted By:
05/17/2019	JOHN EUBANKS	
Details		
Span 2 Deck: 12" DIAMETER SPALL IN BOTTOM OF DECK EAST OVERHANG OVER TRAFFIC PAR		

## BRIDGE INSPECTOR'S RECOMMENDATION FOR PRIORITY MAINTENANCE REPAIRS

Bridge: 770100

County ROBESON

THE FOLLOWING MAINTENANCE ITEMS HAVE BEEN SUBMITTED IN CONJUNCTION WITH A PRIORITY MAINTENANCE REQUEST

MMS Code	MMS Description	Quantity
3334	Bridge Bearings	1 EA
Location:		
Bent/Span No.		
Priority Level	Status	
Recommended	Routine Maintenance	
Submitted Date:	Submitted By:	Assisted By:
05/17/2019	JOHN EUBANKS	
Details		
Span 2 Beam 1 Far Bearing: 1" LONG CRACK IN WELD OF EAST STIFFENER TO VERTICAL PLATE (BOTH PLATES) PAR		

MMS Code	MMS Description	Quantity
3334	Bridge Bearings	1 EA
Location:		
Bent/Span No.		
Priority Level	Status	
Recommended	Routine Maintenance	
Submitted Date:	Submitted By:	Assisted By:
05/17/2019	JOHN EUBANKS	
Details		
Span 2 Beam 3 Far Bearing: 1" LONG CRACK IN WELD OF WEST STIFFENER TO VERTICAL PLATE (BOTH SIDES) PAR		

## BRIDGE INSPECTOR'S RECOMMENDATION FOR PRIORITY MAINTENANCE REPAIRS

Bridge: 770100                      County ROBESON

THE FOLLOWING MAINTENANCE ITEMS HAVE BEEN SUBMITTED IN CONJUNCTION WITH A PRIORITY MAINTENANCE REQUEST

MMS Code	MMS Description	Quantity
3334	Bridge Bearings	1            EA
Location:		
Bent/Span No.		
Priority Level	Status	
Recommended	Routine Maintenance	
Submitted Date:	Submitted By:	Assisted By:
05/17/2019	JOHN EUBANKS	
Details		
Span 3 Beam 1 Far Bearing: 1" LONG CRACK IN WELD OF EAST STIFFENER TO VERTICAL PLATE (BOTH SIDES) PAR		

MMS Code	MMS Description	Quantity
3334	Bridge Bearings	1            EA
Location:		
Bent/Span No.		
Priority Level	Status	
Recommended	Routine Maintenance	
Submitted Date:	Submitted By:	Assisted By:
05/16/2019	JOHN EUBANKS	
Details		
Span 1 Beam 1 Far Bearing: 2" LONG CRACK IN WELD OF EAST STIFFENER TO VERTICAL PLATE PAR		

**BRIDGE INSPECTOR'S RECOMMENDATION FOR PRIORITY MAINTENANCE REPAIRS**

Bridge: 770100                      County ROBESON

THE FOLLOWING MAINTENANCE ITEMS HAVE BEEN SUBMITTED IN CONJUNCTION WITH A PRIORITY MAINTENANCE REQUEST

MMS Code	MMS Description	Quantity
3334	Bridge Bearings	1            EA
Location:		
Bent/Span No.		
Priority Level	Status	
Recommended	Routine Maintenance	
Submitted Date:	Submitted By:	Assisted By:
05/16/2019	JOHN EUBANKS	
Details		
Span 1 Beam 2 Far Bearing: 2" LONG CRACK IN WELD OF EAST STIFFENER TO VERTICAL PLATE (BOTH PLATES) PAR		

MMS Code	MMS Description	Quantity
3334	Bridge Bearings	1            EA
Location:		
Bent/Span No.		
Priority Level	Status	
Recommended	Routine Maintenance	
Submitted Date:	Submitted By:	Assisted By:
05/16/2019	JOHN EUBANKS	
Details		
Span 1 Beam 3 Far Bearing: 1" LONG CRACK IN WELD OF WEST STIFFENER TO VERTICAL PLATE (BOTH PLATES) PAR		



## BRIDGE INSPECTOR'S RECOMMENDATION FOR PRIORITY MAINTENANCE REPAIRS

Bridge: 770100                      County ROBESON

THE FOLLOWING MAINTENANCE ITEMS HAVE BEEN SUBMITTED IN CONJUNCTION WITH A PRIORITY MAINTENANCE REQUEST

MMS Code	MMS Description	Quantity
3334	Bridge Bearings	1            EA
Location:		
Bent/Span No.		
Priority Level	Status	
Recommended	Routine Maintenance	
Submitted Date:	Submitted By:	Assisted By:
05/16/2019	JOHN EUBANKS	
Details		
Span 1 Beam 4 Far Bearing: 1" LONG CRACK IN WELD OF EAST STIFFENER TO VERTICAL PLATE (BOTH PLATES) PAR		

MMS Code	MMS Description	Quantity
3334	Bridge Bearings	1            EA
Location:		
Bent/Span No.		
Priority Level	Status	
Recommended	Routine Maintenance	
Submitted Date:	Submitted By:	Assisted By:
05/16/2019	JOHN EUBANKS	
Details		
Span 4 Beam 2 Near Bearing: 2" LONG CRACK IN WELD OF EAST STIFFENER TO VERTICAL PLATE PAR		

## BRIDGE INSPECTOR'S RECOMMENDATION FOR PRIORITY MAINTENANCE REPAIRS

Bridge: 770100                      County ROBESON

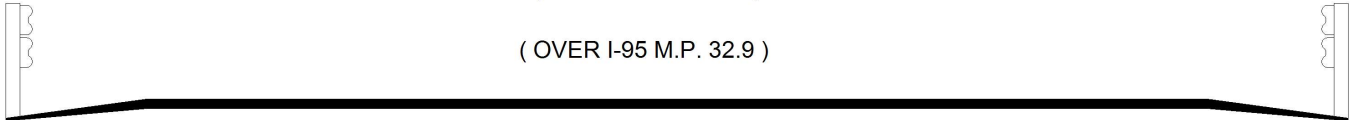
THE FOLLOWING MAINTENANCE ITEMS HAVE BEEN SUBMITTED IN CONJUNCTION WITH A PRIORITY MAINTENANCE REQUEST

MMS Code	MMS Description	Quantity
3334	Bridge Bearings	1            EA
Location:		
Bent/Span No.		
Priority Level	Status	
Recommended	Routine Maintenance	
Submitted Date:	Submitted By:	Assisted By:
05/16/2019	JOHN EUBANKS	
Details		
Span 4 Beam 3 Near Bearing: 1" LONG CRACK IN WELD OF WEST STIFFENER TO VERTICAL PLATE PAR		

# Bridge Inspection Field Sketch

( US HIGHWAY 301 )

( OVER I-95 M.P. 32.9 )



Roadway	22.5ft Wide	2 Paved Lanes	Looking East
Left Shoulder	3ft Wide	3ft Paved	
Right Shoulder	3ft Wide	3ft Paved	
Left Guardrail	3ft from road		
Right Guardrail	3ft from road		

MEASUREMENTS TAKEN 25 FT. SOUTH OF BRIDGE

MEASUREMENTS VERIFIED 5/17/2019 BY JTE  
 MEASUREMENTS UPDATED 5/22/2017 BY DRW

**Title**

APPROACH ROADWAY

**Description**

LOOKING NORTH

**Bridge No:** 770100

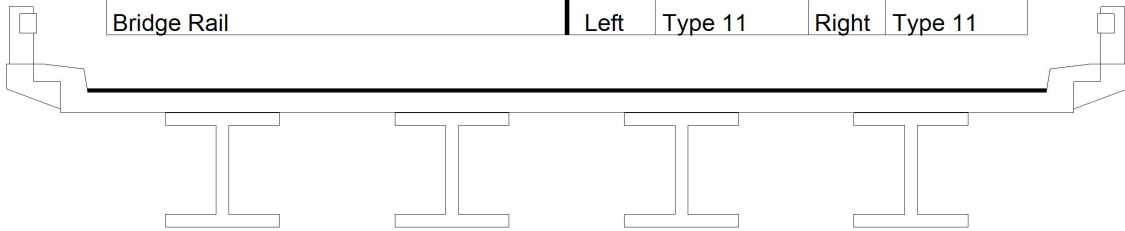
**Drawn By:** RLK

**Date:** 11/09/2009

**File Name:** S0098000561

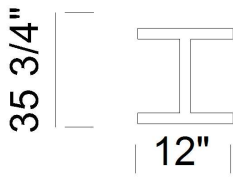
# Bridge Inspection Field Sketch

Deck Width/Out to Out	33.417ft	Between Rails	31.417ft
Clear Roadway	28ft	Wearing Surface	0.104ft
Median Width		Median Height	
Curb Height		Left	0.70ft
		Right	0.70ft
Sidewalk Width		Left	
		Right	
Clear Roadway (Rail to Median)		Left	
		Right	
Guardrail Width		Left	1ft
		Right	1ft
Top of Rail to Deck/Wearing Surface		Left	2.5ft
		Right	2.5ft
Bridge Rail		Left	Type 11
		Right	Type 11



Measurements for Span #	1	SPANS 2-4 SIMILAR	
Deck Thickness	0.583	Left Overhang	4.708
Top of Rail to Bottom of Beam	6.188	Right Overhang	4.708

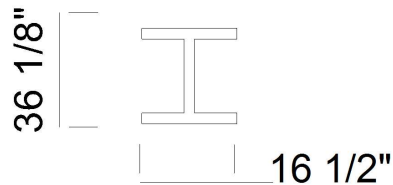
Beam Number	Beam Type	Spacing	Comments
1	Steel I Beam	8ft	
2	Steel I Beam	8ft	
3	Steel I Beam	8ft	
4	Steel I Beam	ft	



FLANGE= 13/16" WEB= 0.688"

COVER PLATE = 10 5/8" wide x 0.903" thick

**SPANS 1&4**



FLANGE= 1 1/16" WEB= 0.793"

COVER PLATES PRESENT OVER TRAVEL LANES

**SPANS 2&3**

**ALL BEAMS HAVE TAPERED FLANGES**

MEASUREMENTS UPDATED 5/17/20197 BY JTE  
MEASUREMENTS UPDATED 5/22/2017 BY DRW

**Title**

Superstructure

**Description**

SIMILAR SECTION

Bridge No: 770100

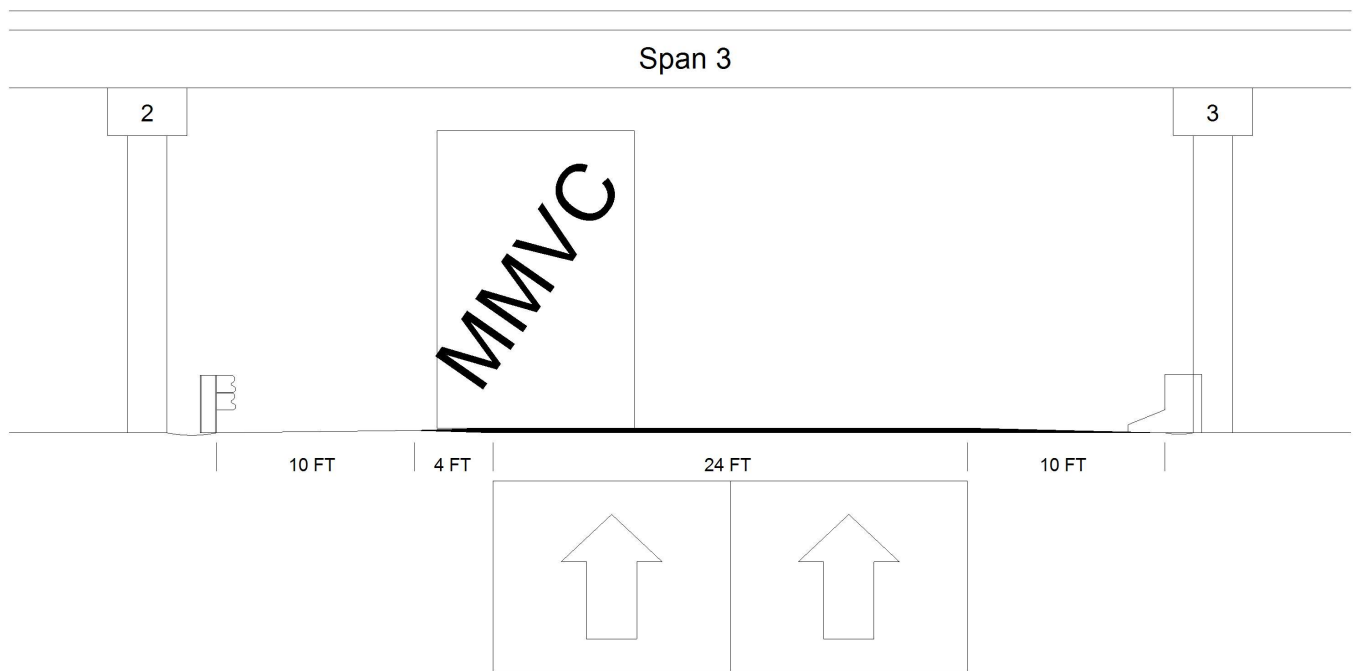
Drawn By: RBH

Date: 12/31/07

File Name: S0098000562



# Bridge Inspection Field Sketch



Roadway 1		Direction of Traffic	South
Distance to Left Rail	14FT	Distance to Right Rail	10FT
Distance to Left Toe of Slope		Distance to Left Bent	16.0FT
Distance to Right Toe of Slope		Distance to Right Bent	11.42FT
MMVC	16.4 Ft at Beam 1, 10 FT from LEFT EDGE OF PAVEMENT		
MVC	16.3 Ft at Beam 1, 0 FT from RIGHT EDGE OF TRAVEL LANES		

MEASUREMENTS UPDATED 5/17/2019 BY JTE  
 MEASUREMENTS UPDATED 5/27/2015 BY DRW

**Title**

S.B.L. Underclearance

**Description**

Looking South Span 3

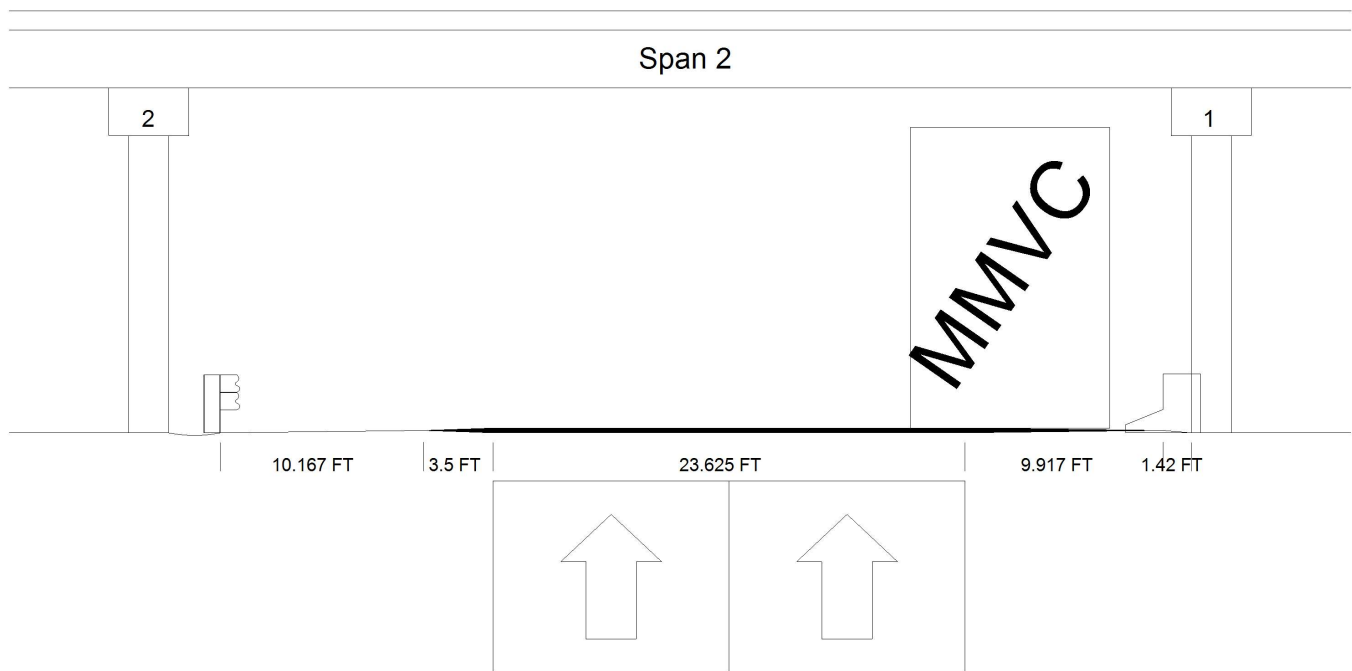
Bridge No: 770100

Drawn By: RLK

Date: 5/23/2011

File Name: S0098000563

# Bridge Inspection Field Sketch

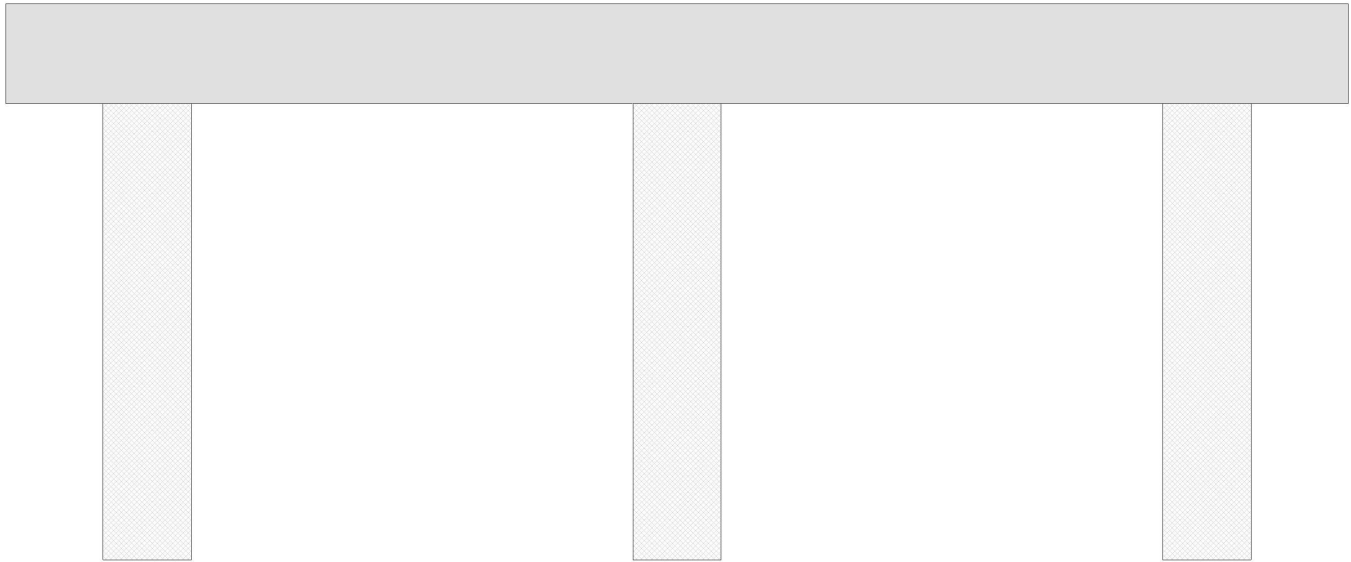


Roadway 1		Direction of Traffic	North
Distance to Left Rail	13.667FT	Distance to Right Rail	9.917FT
Distance to Left Toe of Slope		Distance to Left Bent	15.5FT
Distance to Right Toe of Slope		Distance to Right Bent	11.333FT
MMVC	16.2 Ft at Beam 1, 10 FT from RIGHT EDGE OF PAVEMENT		
MVC	16 Ft at Beam 1, 0 FT from AT CENTER OF ROADWAY		

MEASUREMENTS UPDATED 5/17/2019 BY JTE  
 MEASUREMENTS UPDATED 5/27/2015 BY DRW

<b>Title</b> N.B.L. Underclearance		<b>Description</b> Looking North Span 2	
<b>Bridge No:</b> 770100	<b>Drawn By:</b> RLK	<b>Date:</b> 5/23/2011	<b>File Name:</b> S0098000564

# Bridge Inspection Field Sketch



<b>Cap Information</b>			Material Cast-in-Place Concrete							
Length	Width	Height	Left Overhang	Right Overhang	Left Beam to End of Cap.	Right Beam to End of Cap.				
38.000 ft.	2.500 ft.	2.667 ft.	4.000 ft.	4.000 ft.	1.667 ft.	1.667 ft.				
<b>Subcap Information</b>			Material							
Length	Width	Height	Left Overhang	Right Overhang	Left Pile to Splice.					
<b>Sill Information</b>			Material							
Length	Width	Height								
Pile #	Material	Spacing	Width/Dia.	Height	Length	Orientation	Driven?	Replacement?	Removed?	Collar?
1	Concrete	15 ft.	2.5 ft.	2.5 ft.		Vertical	No	No	No	No
2	Concrete	15 ft.	2.5 ft.	2.5 ft.		Vertical	No	No	No	No
3	Concrete		2.5 ft.	2.5 ft.		Vertical	No	No	No	No
MEASUREMENTS VERIFIED 5/17/2019 BY JTE										
<b>Bent/Abutment #:</b> 1			<b>Similar Bents:</b> 2&3							

<b>Title</b> MEASUREMENTS UPDATED 5/22/2017 BY DRW SUBSTRUCTURE	<b>Description</b> BENT 1
--	------------------------------

Bridge No: 770100	Drawn By: RLK	Date: 11/9/2009	File Name: S0098000943
-------------------	---------------	-----------------	------------------------