





|            |         |             |
|------------|---------|-------------|
| DESIGN NO. | DATE    | PROJECT NO. |
| 1          | 12.1.58 | 813372      |

NOTE: For location of fixed  
connections see general  
drawing.

ELEVATION

SPAN A or E

SPAN B or D

SECTION A-A

SECTION B-B

HALF-TYPICAL SECTION

HALF-END VIEW

PROJECT NO. 813372

ROMESON COUNTY

STATION: 1+117.1  
1+120.5

STATE OF NORTH CAROLINA  
STATE HIGHWAY COMMISSION

SUPERSTRUCTURE  
PLAN

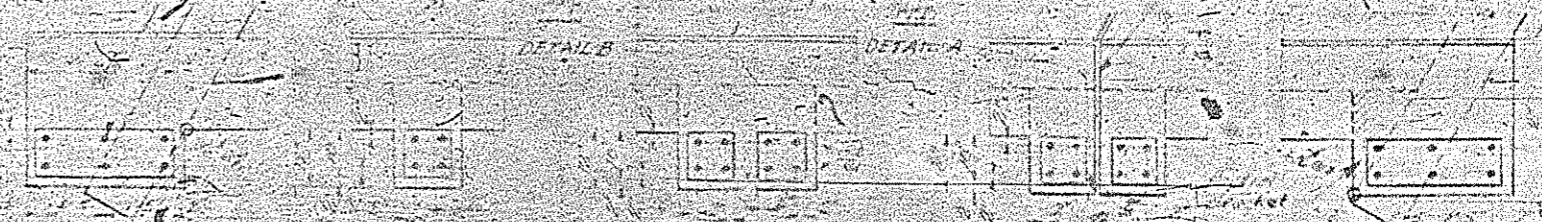
|          |      |    |
|----------|------|----|
| REVISION | DATE | BY |
|          |      |    |
|          |      |    |
|          |      |    |

|             |      |
|-------------|------|
| DESIGNED BY | DATE |
| CHECKED BY  | DATE |
| APPROVED BY | DATE |

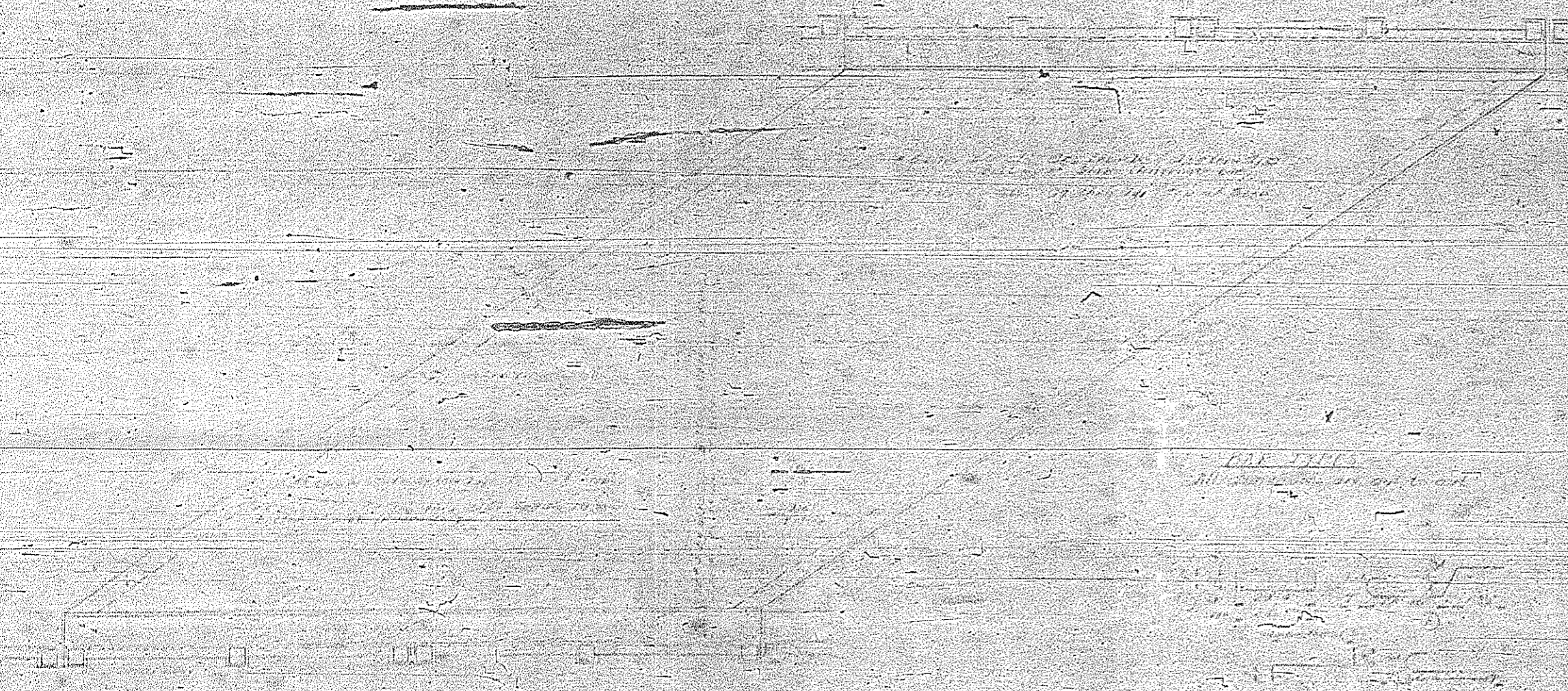




ELEVATION



POST DETAILS



PLAN SPAN C

**BILL OF MATERIAL** 18'72" 9', 19'76" 0", 19'36" 6", 19'76" 0", 19'72" 9"

| BAR | NO  | SIZE | TYPE | LENGTH | WEIGHT | BAR | NO | SIZE | TYPE | LENGTH | WEIGHT | BAR | NO | SIZE | TYPE | LENGTH | WEIGHT |
|-----|-----|------|------|--------|--------|-----|----|------|------|--------|--------|-----|----|------|------|--------|--------|
| 1   | 27  | #4   | S    | 11.0   | 576    | 1   | 10 | #4   | S    | 11.0   | 576    | 1   | 10 | #4   | S    | 11.0   | 576    |
| 2   | 28  | #4   | S    | 11.0   | 576    | 2   | 11 | #4   | S    | 11.0   | 576    | 2   | 11 | #4   | S    | 11.0   | 576    |
| 3   | 29  | #4   | S    | 11.0   | 576    | 3   | 12 | #4   | S    | 11.0   | 576    | 3   | 12 | #4   | S    | 11.0   | 576    |
| 4   | 30  | #4   | S    | 11.0   | 576    | 4   | 13 | #4   | S    | 11.0   | 576    | 4   | 13 | #4   | S    | 11.0   | 576    |
| 5   | 31  | #4   | S    | 11.0   | 576    | 5   | 14 | #4   | S    | 11.0   | 576    | 5   | 14 | #4   | S    | 11.0   | 576    |
| 6   | 32  | #4   | S    | 11.0   | 576    | 6   | 15 | #4   | S    | 11.0   | 576    | 6   | 15 | #4   | S    | 11.0   | 576    |
| 7   | 33  | #4   | S    | 11.0   | 576    | 7   | 16 | #4   | S    | 11.0   | 576    | 7   | 16 | #4   | S    | 11.0   | 576    |
| 8   | 34  | #4   | S    | 11.0   | 576    | 8   | 17 | #4   | S    | 11.0   | 576    | 8   | 17 | #4   | S    | 11.0   | 576    |
| 9   | 35  | #4   | S    | 11.0   | 576    | 9   | 18 | #4   | S    | 11.0   | 576    | 9   | 18 | #4   | S    | 11.0   | 576    |
| 10  | 36  | #4   | S    | 11.0   | 576    | 10  | 19 | #4   | S    | 11.0   | 576    | 10  | 19 | #4   | S    | 11.0   | 576    |
| 11  | 37  | #4   | S    | 11.0   | 576    | 11  | 20 | #4   | S    | 11.0   | 576    | 11  | 20 | #4   | S    | 11.0   | 576    |
| 12  | 38  | #4   | S    | 11.0   | 576    | 12  | 21 | #4   | S    | 11.0   | 576    | 12  | 21 | #4   | S    | 11.0   | 576    |
| 13  | 39  | #4   | S    | 11.0   | 576    | 13  | 22 | #4   | S    | 11.0   | 576    | 13  | 22 | #4   | S    | 11.0   | 576    |
| 14  | 40  | #4   | S    | 11.0   | 576    | 14  | 23 | #4   | S    | 11.0   | 576    | 14  | 23 | #4   | S    | 11.0   | 576    |
| 15  | 41  | #4   | S    | 11.0   | 576    | 15  | 24 | #4   | S    | 11.0   | 576    | 15  | 24 | #4   | S    | 11.0   | 576    |
| 16  | 42  | #4   | S    | 11.0   | 576    | 16  | 25 | #4   | S    | 11.0   | 576    | 16  | 25 | #4   | S    | 11.0   | 576    |
| 17  | 43  | #4   | S    | 11.0   | 576    | 17  | 26 | #4   | S    | 11.0   | 576    | 17  | 26 | #4   | S    | 11.0   | 576    |
| 18  | 44  | #4   | S    | 11.0   | 576    | 18  | 27 | #4   | S    | 11.0   | 576    | 18  | 27 | #4   | S    | 11.0   | 576    |
| 19  | 45  | #4   | S    | 11.0   | 576    | 19  | 28 | #4   | S    | 11.0   | 576    | 19  | 28 | #4   | S    | 11.0   | 576    |
| 20  | 46  | #4   | S    | 11.0   | 576    | 20  | 29 | #4   | S    | 11.0   | 576    | 20  | 29 | #4   | S    | 11.0   | 576    |
| 21  | 47  | #4   | S    | 11.0   | 576    | 21  | 30 | #4   | S    | 11.0   | 576    | 21  | 30 | #4   | S    | 11.0   | 576    |
| 22  | 48  | #4   | S    | 11.0   | 576    | 22  | 31 | #4   | S    | 11.0   | 576    | 22  | 31 | #4   | S    | 11.0   | 576    |
| 23  | 49  | #4   | S    | 11.0   | 576    | 23  | 32 | #4   | S    | 11.0   | 576    | 23  | 32 | #4   | S    | 11.0   | 576    |
| 24  | 50  | #4   | S    | 11.0   | 576    | 24  | 33 | #4   | S    | 11.0   | 576    | 24  | 33 | #4   | S    | 11.0   | 576    |
| 25  | 51  | #4   | S    | 11.0   | 576    | 25  | 34 | #4   | S    | 11.0   | 576    | 25  | 34 | #4   | S    | 11.0   | 576    |
| 26  | 52  | #4   | S    | 11.0   | 576    | 26  | 35 | #4   | S    | 11.0   | 576    | 26  | 35 | #4   | S    | 11.0   | 576    |
| 27  | 53  | #4   | S    | 11.0   | 576    | 27  | 36 | #4   | S    | 11.0   | 576    | 27  | 36 | #4   | S    | 11.0   | 576    |
| 28  | 54  | #4   | S    | 11.0   | 576    | 28  | 37 | #4   | S    | 11.0   | 576    | 28  | 37 | #4   | S    | 11.0   | 576    |
| 29  | 55  | #4   | S    | 11.0   | 576    | 29  | 38 | #4   | S    | 11.0   | 576    | 29  | 38 | #4   | S    | 11.0   | 576    |
| 30  | 56  | #4   | S    | 11.0   | 576    | 30  | 39 | #4   | S    | 11.0   | 576    | 30  | 39 | #4   | S    | 11.0   | 576    |
| 31  | 57  | #4   | S    | 11.0   | 576    | 31  | 40 | #4   | S    | 11.0   | 576    | 31  | 40 | #4   | S    | 11.0   | 576    |
| 32  | 58  | #4   | S    | 11.0   | 576    | 32  | 41 | #4   | S    | 11.0   | 576    | 32  | 41 | #4   | S    | 11.0   | 576    |
| 33  | 59  | #4   | S    | 11.0   | 576    | 33  | 42 | #4   | S    | 11.0   | 576    | 33  | 42 | #4   | S    | 11.0   | 576    |
| 34  | 60  | #4   | S    | 11.0   | 576    | 34  | 43 | #4   | S    | 11.0   | 576    | 34  | 43 | #4   | S    | 11.0   | 576    |
| 35  | 61  | #4   | S    | 11.0   | 576    | 35  | 44 | #4   | S    | 11.0   | 576    | 35  | 44 | #4   | S    | 11.0   | 576    |
| 36  | 62  | #4   | S    | 11.0   | 576    | 36  | 45 | #4   | S    | 11.0   | 576    | 36  | 45 | #4   | S    | 11.0   | 576    |
| 37  | 63  | #4   | S    | 11.0   | 576    | 37  | 46 | #4   | S    | 11.0   | 576    | 37  | 46 | #4   | S    | 11.0   | 576    |
| 38  | 64  | #4   | S    | 11.0   | 576    | 38  | 47 | #4   | S    | 11.0   | 576    | 38  | 47 | #4   | S    | 11.0   | 576    |
| 39  | 65  | #4   | S    | 11.0   | 576    | 39  | 48 | #4   | S    | 11.0   | 576    | 39  | 48 | #4   | S    | 11.0   | 576    |
| 40  | 66  | #4   | S    | 11.0   | 576    | 40  | 49 | #4   | S    | 11.0   | 576    | 40  | 49 | #4   | S    | 11.0   | 576    |
| 41  | 67  | #4   | S    | 11.0   | 576    | 41  | 50 | #4   | S    | 11.0   | 576    | 41  | 50 | #4   | S    | 11.0   | 576    |
| 42  | 68  | #4   | S    | 11.0   | 576    | 42  | 51 | #4   | S    | 11.0   | 576    | 42  | 51 | #4   | S    | 11.0   | 576    |
| 43  | 69  | #4   | S    | 11.0   | 576    | 43  | 52 | #4   | S    | 11.0   | 576    | 43  | 52 | #4   | S    | 11.0   | 576    |
| 44  | 70  | #4   | S    | 11.0   | 576    | 44  | 53 | #4   | S    | 11.0   | 576    | 44  | 53 | #4   | S    | 11.0   | 576    |
| 45  | 71  | #4   | S    | 11.0   | 576    | 45  | 54 | #4   | S    | 11.0   | 576    | 45  | 54 | #4   | S    | 11.0   | 576    |
| 46  | 72  | #4   | S    | 11.0   | 576    | 46  | 55 | #4   | S    | 11.0   | 576    | 46  | 55 | #4   | S    | 11.0   | 576    |
| 47  | 73  | #4   | S    | 11.0   | 576    | 47  | 56 | #4   | S    | 11.0   | 576    | 47  | 56 | #4   | S    | 11.0   | 576    |
| 48  | 74  | #4   | S    | 11.0   | 576    | 48  | 57 | #4   | S    | 11.0   | 576    | 48  | 57 | #4   | S    | 11.0   | 576    |
| 49  | 75  | #4   | S    | 11.0   | 576    | 49  | 58 | #4   | S    | 11.0   | 576    | 49  | 58 | #4   | S    | 11.0   | 576    |
| 50  | 76  | #4   | S    | 11.0   | 576    | 50  | 59 | #4   | S    | 11.0   | 576    | 50  | 59 | #4   | S    | 11.0   | 576    |
| 51  | 77  | #4   | S    | 11.0   | 576    | 51  | 60 | #4   | S    | 11.0   | 576    | 51  | 60 | #4   | S    | 11.0   | 576    |
| 52  | 78  | #4   | S    | 11.0   | 576    | 52  | 61 | #4   | S    | 11.0   | 576    | 52  | 61 | #4   | S    | 11.0   | 576    |
| 53  | 79  | #4   | S    | 11.0   | 576    | 53  | 62 | #4   | S    | 11.0   | 576    | 53  | 62 | #4   | S    | 11.0   | 576    |
| 54  | 80  | #4   | S    | 11.0   | 576    | 54  | 63 | #4   | S    | 11.0   | 576    | 54  | 63 | #4   | S    | 11.0   | 576    |
| 55  | 81  | #4   | S    | 11.0   | 576    | 55  | 64 | #4   | S    | 11.0   | 576    | 55  | 64 | #4   | S    | 11.0   | 576    |
| 56  | 82  | #4   | S    | 11.0   | 576    | 56  | 65 | #4   | S    | 11.0   | 576    | 56  | 65 | #4   | S    | 11.0   | 576    |
| 57  | 83  | #4   | S    | 11.0   | 576    | 57  | 66 | #4   | S    | 11.0   | 576    | 57  | 66 | #4   | S    | 11.0   | 576    |
| 58  | 84  | #4   | S    | 11.0   | 576    | 58  | 67 | #4   | S    | 11.0   | 576    | 58  | 67 | #4   | S    | 11.0   | 576    |
| 59  | 85  | #4   | S    | 11.0   | 576    | 59  | 68 | #4   | S    | 11.0   | 576    | 59  | 68 | #4   | S    | 11.0   | 576    |
| 60  | 86  | #4   | S    | 11.0   | 576    | 60  | 69 | #4   | S    | 11.0   | 576    | 60  | 69 | #4   | S    | 11.0   | 576    |
| 61  | 87  | #4   | S    | 11.0   | 576    | 61  | 70 | #4   | S    | 11.0   | 576    | 61  | 70 | #4   | S    | 11.0   | 576    |
| 62  | 88  | #4   | S    | 11.0   | 576    | 62  | 71 | #4   | S    | 11.0   | 576    | 62  | 71 | #4   | S    | 11.0   | 576    |
| 63  | 89  | #4   | S    | 11.0   | 576    | 63  | 72 | #4   | S    | 11.0   | 576    | 63  | 72 | #4   | S    | 11.0   | 576    |
| 64  | 90  | #4   | S    | 11.0   | 576    | 64  | 73 | #4   | S    | 11.0   | 576    | 64  | 73 | #4   | S    | 11.0   | 576    |
| 65  | 91  | #4   | S    | 11.0   | 576    | 65  | 74 | #4   | S    | 11.0   | 576    | 65  | 74 | #4   | S    | 11.0   | 576    |
| 66  | 92  | #4   | S    | 11.0   | 576    | 66  | 75 | #4   | S    | 11.0   | 576    | 66  | 75 | #4   | S    | 11.0   | 576    |
| 67  | 93  | #4   | S    | 11.0   | 576    | 67  | 76 | #4   | S    | 11.0   | 576    | 67  | 76 | #4   | S    | 11.0   | 576    |
| 68  | 94  | #4   | S    | 11.0   | 576    | 68  | 77 | #4   | S    | 11.0   | 576    | 68  | 77 | #4   | S    | 11.0   | 576    |
| 69  | 95  | #4   | S    | 11.0   | 576    | 69  | 78 | #4   | S    | 11.0   | 576    | 69  | 78 | #4   | S    | 11.0   | 576    |
| 70  | 96  | #4   | S    | 11.0   | 576    | 70  | 79 | #4   | S    | 11.0   | 576    | 70  | 79 | #4   | S    | 11.0   | 576    |
| 71  | 97  | #4   | S    | 11.0   | 576    | 71  | 80 | #4   | S    | 11.0   | 576    | 71  | 80 | #4   | S    | 11.0   | 576    |
| 72  | 98  | #4   | S    | 11.0   | 576    | 72  | 81 | #4   | S    | 11.0   | 576    | 72  | 81 | #4   | S    | 11.0   | 576    |
| 73  | 99  | #4   | S    | 11.0   | 576    | 73  | 82 | #4   | S    | 11.0   | 576    | 73  | 82 | #4   | S    | 11.0   | 576    |
| 74  | 100 | #4   | S    | 11.0   | 576    | 74  | 83 | #4   | S    | 11.0   | 576    | 74  | 83 | #4   | S    | 11.0   | 576    |
| 75  | 101 | #4   | S    | 11.0   | 576    | 75  | 84 | #4   | S    | 11.0   | 576    | 75  | 84 | #4   | S    | 11.0   | 576    |
| 76  | 102 | #4   | S    | 11.0   | 576    | 76  | 85 | #4   | S    | 11.0   | 576    | 76  | 85 | #4   | S    | 11.0   | 576    |
| 77  | 103 | #4   | S    | 11.0   | 576    | 77  | 86 | #4   | S    | 11.0   | 576    | 77  | 86 | #4   | S    | 11.0   | 576    |
| 78  | 104 | #4   | S    | 11.0   | 576    | 78  | 87 | #4   | S    | 11.0   | 576    | 78  | 87 | #4   | S    | 11.0   | 576    |
| 79  | 105 | #4   | S    | 11.0   | 576    | 79  | 88 | #4   | S    | 11.0   | 576    | 79  | 88 | #4   | S    | 11.0   | 576    |
| 80  | 106 | #4   | S    | 11.0   | 576    | 80  | 89 | #4   | S    | 11.0   | 576    | 80  | 89 | #4   | S    | 11.0   | 576    |
| 81  | 107 | #4   | S    | 11.0   | 576    | 81  | 90 | #4   | S    | 11.0   | 576    | 81  | 90 | #4   | S    | 11.0   | 576    |
| 82  | 108 | #4   | S    | 11.0   | 576    | 82  | 91 | #4   | S    | 11.0   | 576    | 82  | 91 | #4   | S    | 11.0   | 576    |
| 83  | 109 | #4   | S    | 11.0   | 576    | 83  | 92 | #4   | S    | 11.0   | 576    | 83  | 92 | #4   | S    | 11.0   | 576    |
| 84  | 110 | #4   | S    | 11.0   | 576    | 84  | 93 | #4   | S    | 11.0   | 576    | 84  | 93 | #4   | S    | 11.0   | 576    |
| 85  | 111 | #4   | S    | 11.0   | 576    | 85  | 94 | #4   | S    | 11.0   | 576    | 85  | 94 | #4   | S    | 11.0   | 576    |
| 86  | 112 | #4   | S    | 11.0   | 576    | 86  | 95 | #4   | S    | 11.0   | 576    | 86  | 95 | #4   | S    | 11.0   | 576    |
| 87  | 113 | #4   | S    | 11.0   | 576    | 87  | 96 | #4   | S    | 11.0   | 576    | 87  | 96 | #4   | S    | 11.0   | 576    |
| 88  | 114 | #4   | S    | 11.0   | 576    | 88  | 97 | #4   | S    | 11.0   | 576    | 88  | 97 | #4   | S    | 11.0   | 576    |
| 89  | 115 | #4   | S    | 11.0   | 576    | 89  | 98 | #4   | S    | 11.0   | 576    | 89  | 98 | #4   | S    | 11.0   | 576    |
| 90  | 116 | #4   | S    | 11.0   | 576    | 90  | 99 | #4   | S    | 11.0   | 576    | 90  | 99 | #4   | S    | 11.0   | 576    |
| 91  |     |      |      |        |        |     |    |      |      |        |        |     |    |      |      |        |        |



361194

361230

361150

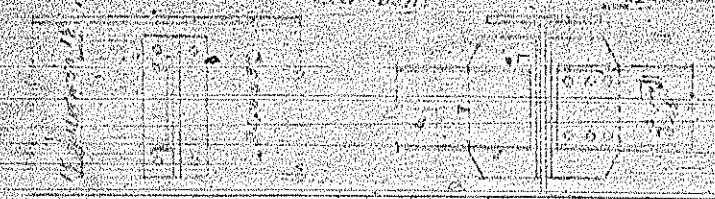
PAN A & E

PAN B & D

PAN C

TEEL LAYOUT

COVER PLATE WELDING DETAIL



361194

361230

DIAPHRAM CONNECTOR SPAN AND  
SPAN B AND C

DIAPHRAM CONNECTOR DETAIL

DETAIL OF DIAPHRAM CONNECTION

NOTE: All the contractor's shop connections shall be made in accordance with the specifications and drawings. All connections shall be made with high strength bolts and washers. The contractor shall be responsible for the proper installation of the bolts and washers.



PROJECT NO. 813372

ROBERSON COUNTY

STATION: 124+47.1  
15+000 ft

STATE OF NORTH CAROLINA  
STATE HIGHWAY COMMISSION

STRUCTURAL STEEL  
DETAILS

APRIL 1958





PLAN END SECTION  
END ABUTMENTS SIMILAR BY 180° ROTATION



BAR TYPES  
(All dimensions out to out)

ALL OF MATERIAL FOR THE JOB MUST BE TWICE CHECKED

| BAR | NO. | SIZE   | LENGTH | WEIGHT |
|-----|-----|--------|--------|--------|
| 0   | 1   | 5/8"   | 45.0   | 7.22   |
| 0   | 2   | 1/2"   | 55.9   | 7.95   |
| 0   | 3   | 3/4"   | 33.7   | 6.21   |
| 0   | 4   | 1"     | 31.4   | 7.92   |
| 0   | 5   | 1 1/4" | 29.9   | 12.3   |
| 0   | 6   | 1 1/2" | 25.5   | 11.22  |
| 0   | 7   | 2"     | 29.9   | 21.2   |
| 0   | 8   | 2 1/2" | 22.2   | 11.3   |
| 0   | 9   | 3"     | 25.2   | 16.7   |
| 0   | 10  | 4"     | 22.3   | 12.9   |
| 0   | 11  | 5"     | 2.2    | 7.3    |
| 0   | 12  | 5"     | 3.2    | 9.3    |
| 0   | 13  | 5"     | 3.2    | 9.3    |
| 0   | 14  | 5"     | 3.2    | 9.3    |
| 0   | 15  | 5"     | 3.2    | 9.3    |
| 0   | 16  | 5"     | 3.2    | 9.3    |
| 0   | 17  | 5"     | 3.2    | 9.3    |
| 0   | 18  | 5"     | 3.2    | 9.3    |
| 0   | 19  | 5"     | 3.2    | 9.3    |
| 0   | 20  | 5"     | 3.2    | 9.3    |
| 0   | 21  | 5"     | 3.2    | 9.3    |
| 0   | 22  | 5"     | 3.2    | 9.3    |
| 0   | 23  | 5"     | 3.2    | 9.3    |
| 0   | 24  | 5"     | 3.2    | 9.3    |
| 0   | 25  | 5"     | 3.2    | 9.3    |
| 0   | 26  | 5"     | 3.2    | 9.3    |
| 0   | 27  | 5"     | 3.2    | 9.3    |
| 0   | 28  | 5"     | 3.2    | 9.3    |
| 0   | 29  | 5"     | 3.2    | 9.3    |
| 0   | 30  | 5"     | 3.2    | 9.3    |
| 0   | 31  | 5"     | 3.2    | 9.3    |
| 0   | 32  | 5"     | 3.2    | 9.3    |
| 0   | 33  | 5"     | 3.2    | 9.3    |
| 0   | 34  | 5"     | 3.2    | 9.3    |
| 0   | 35  | 5"     | 3.2    | 9.3    |
| 0   | 36  | 5"     | 3.2    | 9.3    |
| 0   | 37  | 5"     | 3.2    | 9.3    |
| 0   | 38  | 5"     | 3.2    | 9.3    |
| 0   | 39  | 5"     | 3.2    | 9.3    |
| 0   | 40  | 5"     | 3.2    | 9.3    |
| 0   | 41  | 5"     | 3.2    | 9.3    |
| 0   | 42  | 5"     | 3.2    | 9.3    |
| 0   | 43  | 5"     | 3.2    | 9.3    |
| 0   | 44  | 5"     | 3.2    | 9.3    |
| 0   | 45  | 5"     | 3.2    | 9.3    |
| 0   | 46  | 5"     | 3.2    | 9.3    |
| 0   | 47  | 5"     | 3.2    | 9.3    |
| 0   | 48  | 5"     | 3.2    | 9.3    |
| 0   | 49  | 5"     | 3.2    | 9.3    |
| 0   | 50  | 5"     | 3.2    | 9.3    |
| 0   | 51  | 5"     | 3.2    | 9.3    |
| 0   | 52  | 5"     | 3.2    | 9.3    |
| 0   | 53  | 5"     | 3.2    | 9.3    |
| 0   | 54  | 5"     | 3.2    | 9.3    |
| 0   | 55  | 5"     | 3.2    | 9.3    |
| 0   | 56  | 5"     | 3.2    | 9.3    |
| 0   | 57  | 5"     | 3.2    | 9.3    |
| 0   | 58  | 5"     | 3.2    | 9.3    |
| 0   | 59  | 5"     | 3.2    | 9.3    |
| 0   | 60  | 5"     | 3.2    | 9.3    |
| 0   | 61  | 5"     | 3.2    | 9.3    |
| 0   | 62  | 5"     | 3.2    | 9.3    |
| 0   | 63  | 5"     | 3.2    | 9.3    |
| 0   | 64  | 5"     | 3.2    | 9.3    |
| 0   | 65  | 5"     | 3.2    | 9.3    |
| 0   | 66  | 5"     | 3.2    | 9.3    |
| 0   | 67  | 5"     | 3.2    | 9.3    |
| 0   | 68  | 5"     | 3.2    | 9.3    |
| 0   | 69  | 5"     | 3.2    | 9.3    |
| 0   | 70  | 5"     | 3.2    | 9.3    |
| 0   | 71  | 5"     | 3.2    | 9.3    |
| 0   | 72  | 5"     | 3.2    | 9.3    |
| 0   | 73  | 5"     | 3.2    | 9.3    |
| 0   | 74  | 5"     | 3.2    | 9.3    |
| 0   | 75  | 5"     | 3.2    | 9.3    |
| 0   | 76  | 5"     | 3.2    | 9.3    |
| 0   | 77  | 5"     | 3.2    | 9.3    |
| 0   | 78  | 5"     | 3.2    | 9.3    |
| 0   | 79  | 5"     | 3.2    | 9.3    |
| 0   | 80  | 5"     | 3.2    | 9.3    |
| 0   | 81  | 5"     | 3.2    | 9.3    |
| 0   | 82  | 5"     | 3.2    | 9.3    |
| 0   | 83  | 5"     | 3.2    | 9.3    |
| 0   | 84  | 5"     | 3.2    | 9.3    |
| 0   | 85  | 5"     | 3.2    | 9.3    |
| 0   | 86  | 5"     | 3.2    | 9.3    |
| 0   | 87  | 5"     | 3.2    | 9.3    |
| 0   | 88  | 5"     | 3.2    | 9.3    |
| 0   | 89  | 5"     | 3.2    | 9.3    |
| 0   | 90  | 5"     | 3.2    | 9.3    |
| 0   | 91  | 5"     | 3.2    | 9.3    |
| 0   | 92  | 5"     | 3.2    | 9.3    |
| 0   | 93  | 5"     | 3.2    | 9.3    |
| 0   | 94  | 5"     | 3.2    | 9.3    |
| 0   | 95  | 5"     | 3.2    | 9.3    |
| 0   | 96  | 5"     | 3.2    | 9.3    |
| 0   | 97  | 5"     | 3.2    | 9.3    |
| 0   | 98  | 5"     | 3.2    | 9.3    |
| 0   | 99  | 5"     | 3.2    | 9.3    |
| 0   | 100 | 5"     | 3.2    | 9.3    |

PROJECT NO. 37397  
ROBEYSON COUNTY  
STATION: 121.117.7

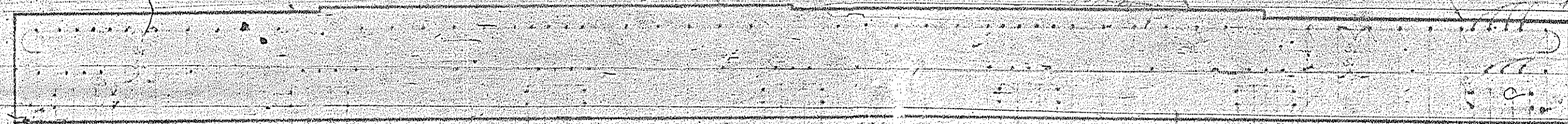
STATE OF NORTH CAROLINA  
STATE HIGHWAY COMMISSION  
SUBSTRUCTURE  
END PENTS. N1LEN2  
AUGUST 1958

|           |     |      |    |
|-----------|-----|------|----|
| REVISIONS | NO. | DATE | BY |
|           |     |      |    |
|           |     |      |    |
|           |     |      |    |
|           |     |      |    |





BRIDGE AND SIMILAR STRUCTURES



BILL OF MATERIAL

| ONE BENT |      | TWO REQUIRED |         |        |  |
|----------|------|--------------|---------|--------|--|
| No.      | Size | Type         | Length  | Weight |  |
| 1        | 4    | W10          | 48'-10" | 811    |  |
| 2        | 4    | W10          | 46'-0"  | 791    |  |
| 3        | 4    | W10          | 52'-11" | 128    |  |
| 4        | 4    | W10          | 48'-0"  | 811    |  |
| 5        | 4    | W10          | 46'-0"  | 791    |  |
| 6        | 4    | W10          | 52'-11" | 128    |  |
| 7        | 4    | W10          | 48'-0"  | 811    |  |
| 8        | 4    | W10          | 46'-0"  | 791    |  |
| 9        | 4    | W10          | 52'-11" | 128    |  |
| 10       | 4    | W10          | 48'-0"  | 811    |  |
| 11       | 4    | W10          | 46'-0"  | 791    |  |
| 12       | 4    | W10          | 52'-11" | 128    |  |
| 13       | 4    | W10          | 48'-0"  | 811    |  |
| 14       | 4    | W10          | 46'-0"  | 791    |  |
| 15       | 4    | W10          | 52'-11" | 128    |  |

Reinforcing Steel 165 2,096  
 12x12" Concrete 10'x12' 158  
 60' Prestressed Concrete No. 7 10'x12' 55  
 60' Prestressed Concrete No. 7 10'x12' 55  
 \*Concrete specified by field books has been substituted

Note: Piles shall be driven to firm bearing capacity of 40 tons each.

PROJECT NO. 513972

ROBINSON COUNTY

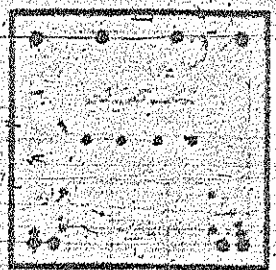
STATION: 101+477.4

10+000

STATE OF NORTH CAROLINA  
 STATE HIGHWAY COMMISSION

SUBSTRUCTURE  
 INTERIOR BEAMS  
 NO. 1-1-4

APRIL 1954

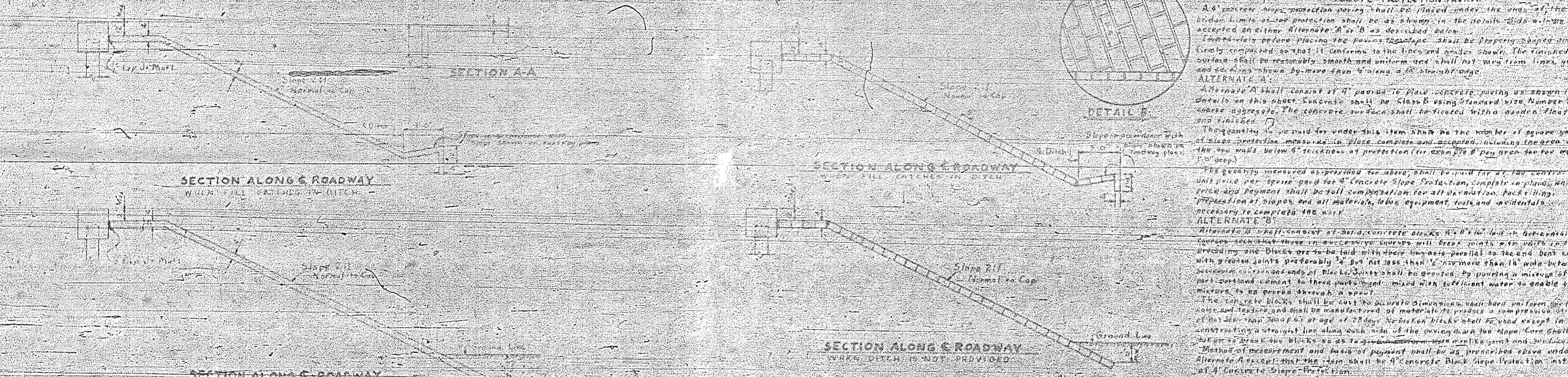
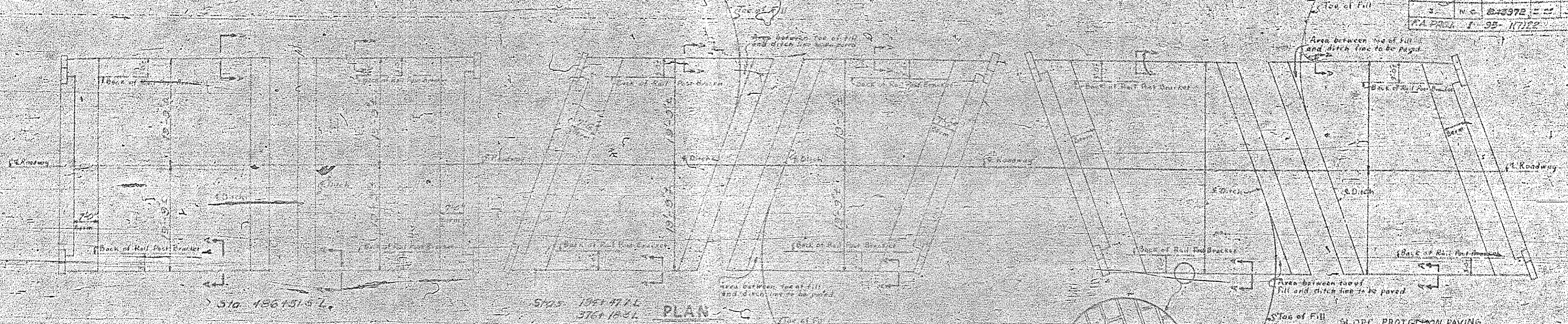


RECEIVED









**SLOPE PROTECTION PAVING**  
 A concrete slope protection paving shall be placed under the edge of the bridge limits of the protection shall be as shown in the details. It shall be accepted as either Alternative A or B as described below.  
 Immediately before placing the paving the slope shall be properly scraped and firmly compacted so that it conforms to the lines and grades shown. The finished surface shall be reasonably smooth and uniform and shall not vary from lines, grades, and sections shown by more than 1/4" along a 10' straight edge.

**ALTERNATE A:**  
 Alternative A shall consist of 4" portland cement concrete paving as shown in detail on this sheet. Concrete shall be Class B using standard size Number 8 coarse aggregate. The concrete surface shall be finished with a wooden float and finished.  
 The quantity to be paid for under this item shall be the number of square yards of slope protection measured in place complete and accepted, including the area of the top walls below 6" thickness of protection (for example 8' pay area for top wall 12' deep).  
 The quantity measured as provided for above shall be paid for at 10¢ concrete unit price per square yard for 4" concrete slope protection, complete in place, which price and payment shall be full compensation for all excavation, backfilling, preparation of slopes and all materials, labor, equipment, tools and incidentals necessary to complete the work.

**ALTERNATE B:**  
 Alternative B shall consist of solid concrete blocks 12" x 16" x 16" laid in horizontal courses such that those in successive courses will break joints with joints in the preceding one. Blocks are to be laid with their long axis parallel to the end and best cap with grouted joints preferably 4" but not less than 2" nor more than 1 1/2" wide between successive courses and ends of blocks. Joints shall be grouted by pouring a mixture of one part portland cement to three parts sand, mixed with sufficient water to enable the mixture to be forced through a spout.  
 The concrete blocks shall be cast to accurate dimensions, shall have an even top face and bottom and shall be manufactured of material of quality in compression of not less than 3000 psi at age of 28 days. No broken blocks shall be used except in constructing a straight line along each side of the paving. Each block shall be broken to break the blocks so as to give a rough surface on the joint and surface.  
 Method of measurement and basis of payment shall be as prescribed above under Alternative A except that the item shall be 4" concrete block slope protection instead of 4" concrete slope protection.

PROJECT NO. 8-13972  
 ROBESON COUNTY  
 STATION: 194+77.1  
 375+15.3 L  
 728+151.5 L

| BRIDGE NO.  | ALTERNATE A | ALTERNATE B |
|-------------|-------------|-------------|
| 194+77.1    | 100         | 100         |
| 375+15.3 L  | 100         | 100         |
| 728+151.5 L | 100         | 100         |

STATE OF NORTH CAROLINA  
 STATE HIGHWAY COMMISSION  
 STANDARD  
 SLOPE PROTECTION PAVING  
 DETAILS  
 SEPTEMBER, 1952

SPECIAL INSTRUCTIONS: R. W. NIXON  
 DATE: 9/15/52  
 STANDARD