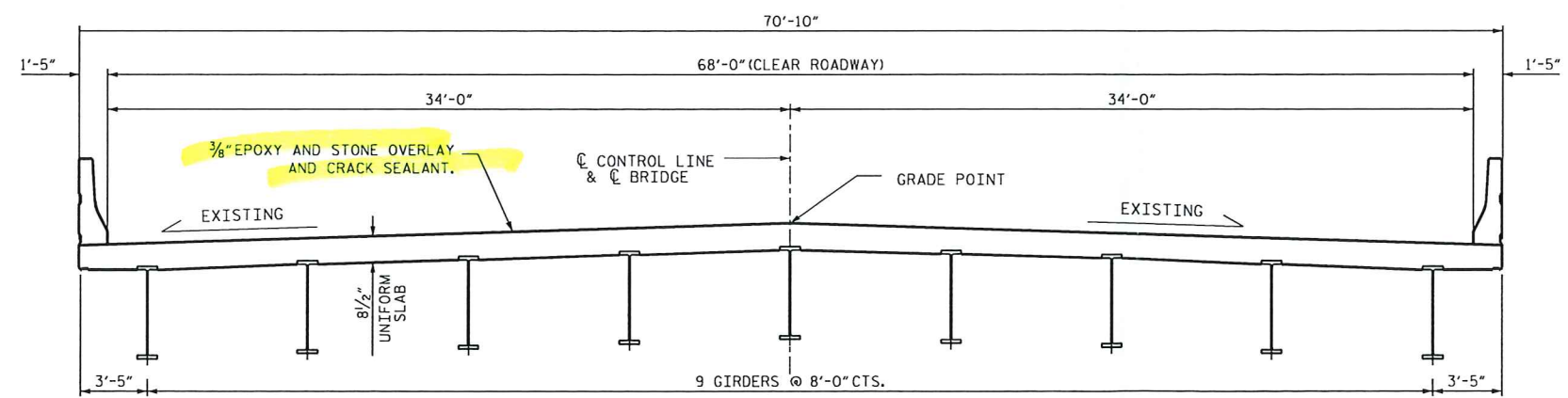
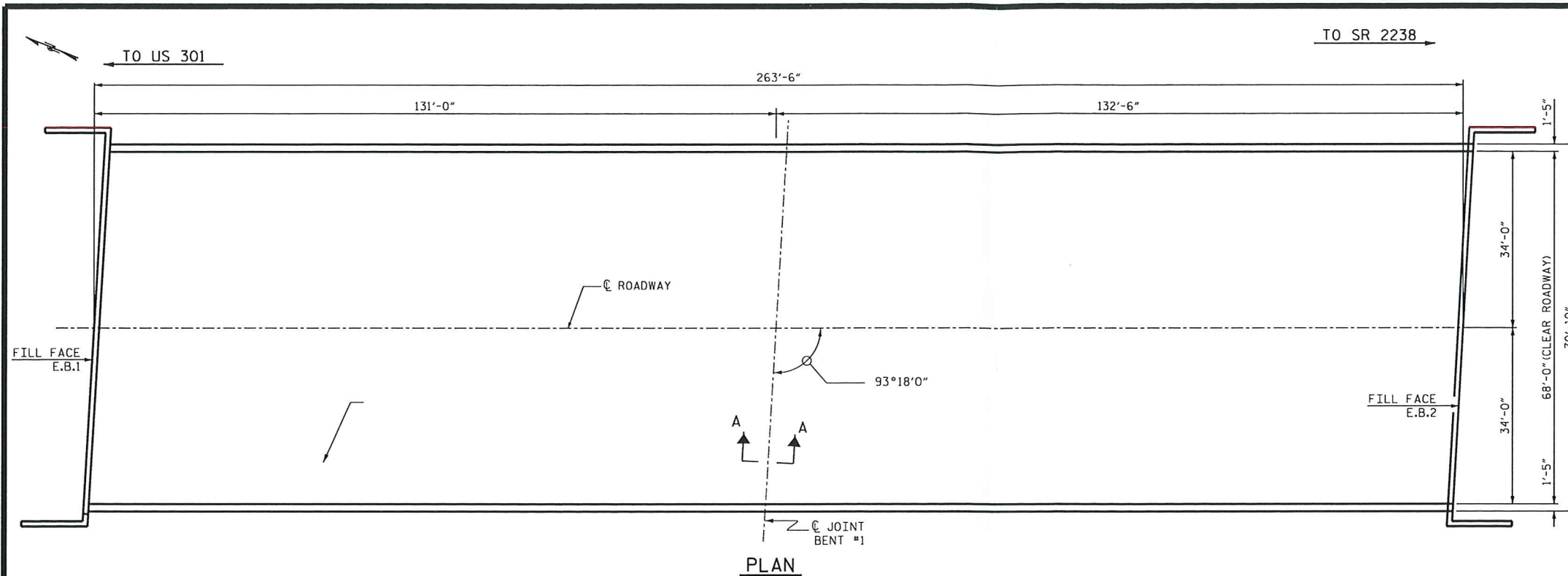


NOTES

- EXISTING DIMENSIONS AND BRIDGE CONDITION ARE FROM BEST INFORMATION AVAILABLE. THE CONTRACTOR SHALL FIELD VERIFY THE INFORMATION SHOWN ON THE PLANS AND NOTIFY THE ENGINEER IF ACTUAL DIMENSIONS AND CONDITIONS DIFFER.
- FOR REPAIR OF BRIDGE WITH EPOXY AND STONE OVERLAY, SEE SPECIAL PROVISIONS.
- FOR PLACEMENT OF PRE-TREATMENT, SEE SPECIAL PROVISIONS.
- FOR FOAM JOINT SEALS, SEE SPECIAL PROVISIONS.
- THE INSTALLED FOAM JOINT SEALS SHALL BE INSTALLED WATERTIGHT.
- FOR ELASTOMERIC CONCRETE, SEE SPECIAL PROVISIONS.
- THE CONTRACTOR WILL NOT BE PERMITTED TO FORM THE JOINT FOR THE EVAZOTE SEAL IN LIEU OF SAWING THE JOINT.
- FOR CLASS II DECK REPAIRS, SEE SPECIAL PROVISIONS.
- THE NOMINAL UNCOMPRESSED SEAL WIDTH OF THE FOAM JOINT SEAL SHALL BE $3\frac{1}{16}$ " AT BENT #1.
- FOR OVER-SAWED JOINTS, THE NOMINAL UNCOMPRESSED SEAL WIDTH OF THE FOAM JOINT SEAL SHALL BE DETERMINED BY THE ENGINEER.
- IT IS THE CONTRACTOR'S RESPONSIBILITY TO FOLLOW ALL STATE AND FEDERAL SAFETY REQUIREMENTS.

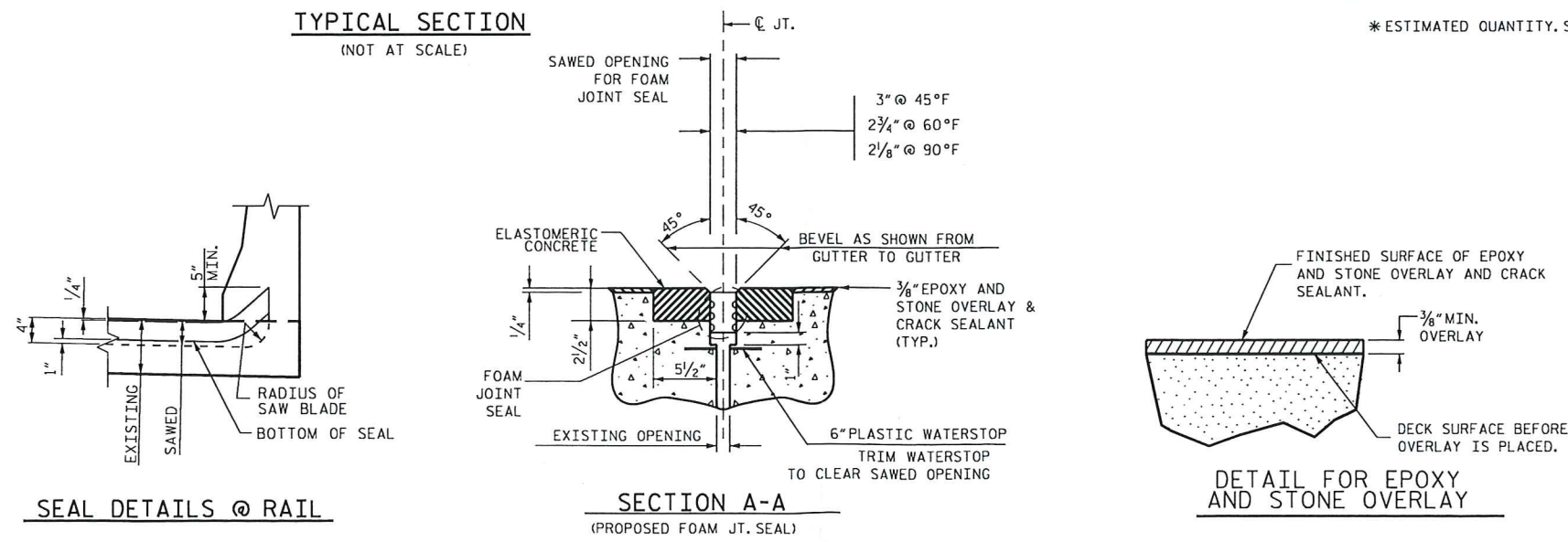


TOTAL BILL OF MATERIAL			
FOR BRIDGE 5			
PLACEMENT OF PRE-TREATMENT	EPOXY/STONE OVERLAY	FOAM JOINT SEALS	* CLASS II DECK REPAIRS
SO.FT.	SO.FT.	LUMP SUM	SO.FT.
17918	17918	LUMP SUM	180

* ESTIMATED QUANTITY. SEE SPECIAL PROVISIONS.

250005

PROJECT NO. 17BP.6.P.3
 COUNTY: CUMBERLAND
 BRIDGE NO: No. 05



DRAWN BY: STS DATE: OCT./2011
 CHECKED BY: DCM DATE: MAY/2012

STATE OF NORTH CAROLINA
 DEPARTMENT OF TRANSPORTATION
 RALEIGH

PLAN VIEW & DETAILS
 -BRIDGE NO. 05 ON NC59
 ACROSS I95-

REVISIONS					
NO.	BY	DATE	NO.	BY	DATE
1			3		
2			4		

SHEET NO. S-1
 TOTAL SHEETS