

**This electronic collection of documents is provided
for the convenience of the user
and is Not a Certified Document –**

**The documents contained herein were originally issued
and sealed by the individuals whose names and license
numbers appear on each page, on the dates appearing
with their signature on that page.**

**This file or an individual page
shall not be considered a certified document.**

REFERENCE: B-4593

PROJECT: 38422

STATE OF NORTH CAROLINA
DEPARTMENT OF TRANSPORTATION
DIVISION OF HIGHWAYS
GEOTECHNICAL ENGINEERING UNIT

STATE	STATE PROJECT REFERENCE NO.	SHEET NO.	TOTAL SHEETS
N.C.	B-4593	1	9

STRUCTURE
SUBSURFACE INVESTIGATION

COUNTY PAMLICO
PROJECT DESCRIPTION BRIDGE NO. 38 ON -L- (NC 55)
OVER TRENT CREEK

CONTENTS

SHEET NO.	DESCRIPTION
1	TITLE SHEET
2	LEGEND (SOIL & ROCK)
3	SITE PLAN
4-5	PROFILES
6-9	BORE LOGS

CAUTION NOTICE

THE SUBSURFACE INFORMATION AND THE SUBSURFACE INVESTIGATION ON WHICH IT IS BASED WERE MADE FOR THE PURPOSE OF STUDY, PLANNING AND DESIGN, AND NOT FOR CONSTRUCTION OR PAY PURPOSES. THE VARIOUS FIELD BORING LOGS, ROCK CORES AND SOIL TEST DATA AVAILABLE MAY BE REVIEWED OR INSPECTED IN RALEIGH BY CONTACTING THE N. C. DEPARTMENT OF TRANSPORTATION, GEOTECHNICAL ENGINEERING UNIT AT (919) 707-6850. THE SUBSURFACE PLANS AND REPORTS, FIELD BORING LOGS, ROCK CORES AND SOIL TEST DATA ARE NOT PART OF THE CONTRACT.

GENERAL SOIL AND ROCK STRATA DESCRIPTIONS AND INDICATED BOUNDARIES ARE BASED ON A GEOTECHNICAL INTERPRETATION OF ALL AVAILABLE SUBSURFACE DATA AND MAY NOT NECESSARILY REFLECT THE ACTUAL SUBSURFACE CONDITIONS BETWEEN BORINGS OR BETWEEN SAMPLED STRATA WITHIN THE BOREHOLE. THE LABORATORY SAMPLE DATA AND THE IN SITU (IN-PLACE) TEST DATA CAN BE RELIED ON ONLY TO THE DEGREE OF RELIABILITY INHERENT IN THE STANDARD TEST METHOD. THE OBSERVED WATER LEVELS OR SOIL MOISTURE CONDITIONS INDICATED IN THE SUBSURFACE INVESTIGATIONS ARE AS RECORDED AT THE TIME OF THE INVESTIGATION. THESE WATER LEVELS OR SOIL MOISTURE CONDITIONS MAY VARY CONSIDERABLY WITH TIME ACCORDING TO CLIMATIC CONDITIONS INCLUDING TEMPERATURES, PRECIPITATION AND WIND, AS WELL AS OTHER NON-CLIMATIC FACTORS.

THE BIDDER OR CONTRACTOR IS CAUTIONED THAT DETAILS SHOWN ON THE SUBSURFACE PLANS ARE PRELIMINARY ONLY AND IN MANY CASES THE FINAL DESIGN DETAILS ARE DIFFERENT. FOR BIDDING AND CONSTRUCTION PURPOSES, REFER TO THE CONSTRUCTION PLANS AND DOCUMENTS FOR FINAL DESIGN INFORMATION ON THIS PROJECT. THE DEPARTMENT DOES NOT WARRANT OR GUARANTEE THE SUFFICIENCY OR ACCURACY OF THE INVESTIGATION MADE, NOR THE INTERPRETATIONS MADE, OR OPINION OF THE DEPARTMENT AS TO THE TYPE OF MATERIALS AND CONDITIONS TO BE ENCOUNTERED. THE BIDDER OR CONTRACTOR IS CAUTIONED TO MAKE SUCH INDEPENDENT SUBSURFACE INVESTIGATIONS AS HE DEEMS NECESSARY TO SATISFY HIMSELF AS TO CONDITIONS TO BE ENCOUNTERED ON THE PROJECT. THE CONTRACTOR SHALL HAVE NO CLAIM FOR ADDITIONAL COMPENSATION OR FOR AN EXTENSION OF TIME FOR ANY REASON RESULTING FROM THE ACTUAL CONDITIONS ENCOUNTERED AT THE SITE DIFFERING FROM THOSE INDICATED IN THE SUBSURFACE INFORMATION.

- NOTES:
- THE INFORMATION CONTAINED HEREIN IS NOT IMPLIED OR GUARANTEED BY THE N. C. DEPARTMENT OF TRANSPORTATION AS ACCURATE NOR IS IT CONSIDERED PART OF THE PLANS, SPECIFICATIONS OR CONTRACT FOR THE PROJECT.
 - BY HAVING REQUESTED THIS INFORMATION, THE CONTRACTOR SPECIFICALLY WAIVES ANY CLAIMS FOR INCREASED COMPENSATION OR EXTENSION OF TIME BASED ON DIFFERENCES BETWEEN THE CONDITIONS INDICATED HEREIN AND THE ACTUAL CONDITIONS AT THE PROJECT SITE.

PERSONNEL

C.J. CORNETTE

S.N. ZIMARINO

R.E. SMITH

J.M. EDMONDSON

INVESTIGATED BY T.C. BOTTOMS

DRAWN BY T.C. BOTTOMS

CHECKED BY D.N. ARGENBRIGHT

SUBMITTED BY D.N. ARGENBRIGHT

DATE JUNE 2018



DocuSigned by:
Tyler C. Bottoms 10/10/2018

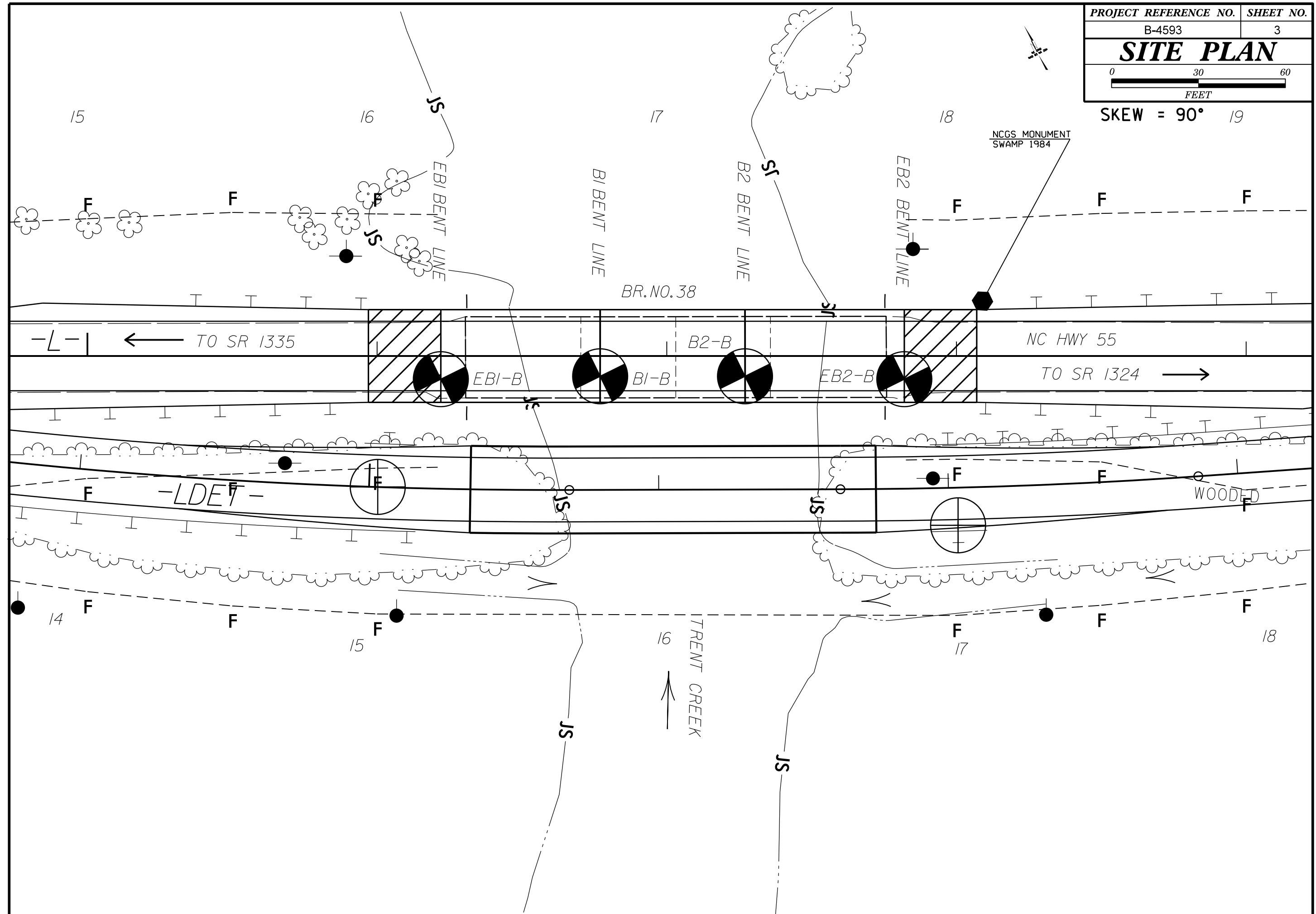
48A2D3BD08684848 SIGNATURE DATE

**DOCUMENT NOT CONSIDERED FINAL
UNLESS ALL SIGNATURES COMPLETED**

NORTH CAROLINA DEPARTMENT OF TRANSPORTATION
DIVISION OF HIGHWAYS
GEOTECHNICAL ENGINEERING UNIT
SUBSURFACE INVESTIGATION
SOIL AND ROCK LEGEND, TERMS, SYMBOLS, AND ABBREVIATIONS

Table with multiple sections: SOIL DESCRIPTION, GRADATION, ROCK DESCRIPTION, TERMS AND DEFINITIONS, SOIL LEGEND AND AASHTO CLASSIFICATION, MINERALOGICAL COMPOSITION, COMPRESSION, PERCENTAGE OF MATERIAL, GROUND WATER, MISCELLANEOUS SYMBOLS, RECOMMENDATION SYMBOLS, ABBREVIATIONS, EQUIPMENT USED ON SUBJECT PROJECT, PLASTICITY, COLOR, FRACTURE SPACING, BEDDING, INDURATION.

SKEW = 90° 19

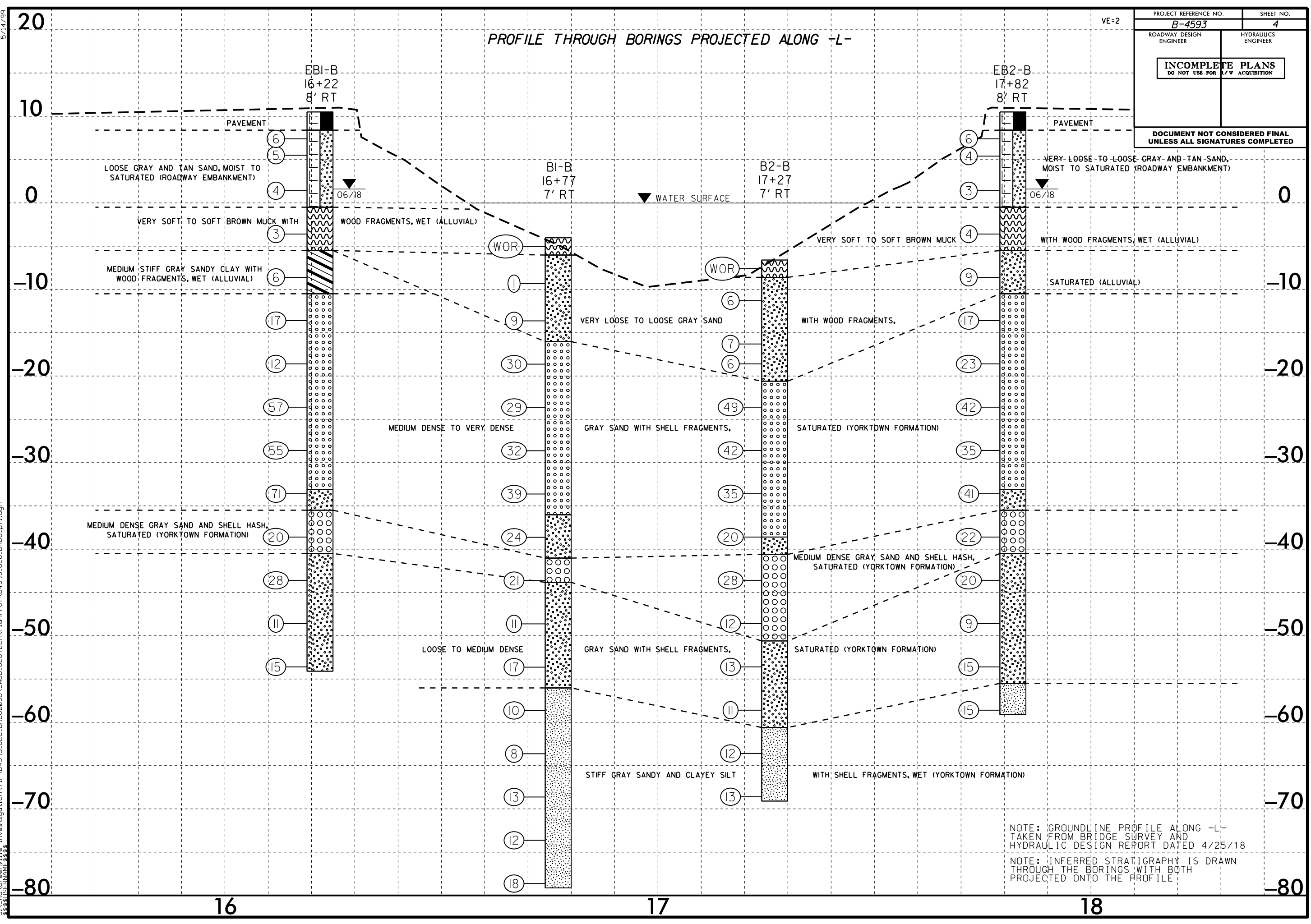


5/14/99
 14-JUN-2018 13:18
 S:\ERDC\Greenville_Investigation\TIP\B4593_GEO\BRDG0038\CADD_GEO\TECH\Plan\Pr of\B4593_GEO_BRDG.pfl.dgn
 \$\$\$\$

VE=2

PROJECT REFERENCE NO. B-4593	SHEET NO. 4
ROADWAY DESIGN ENGINEER	HYDRAULICS ENGINEER
INCOMPLETE PLANS DO NOT USE FOR R/W ACQUISITION	
DOCUMENT NOT CONSIDERED FINAL UNLESS ALL SIGNATURES COMPLETED	

PROFILE THROUGH BORINGS PROJECTED ALONG -L-



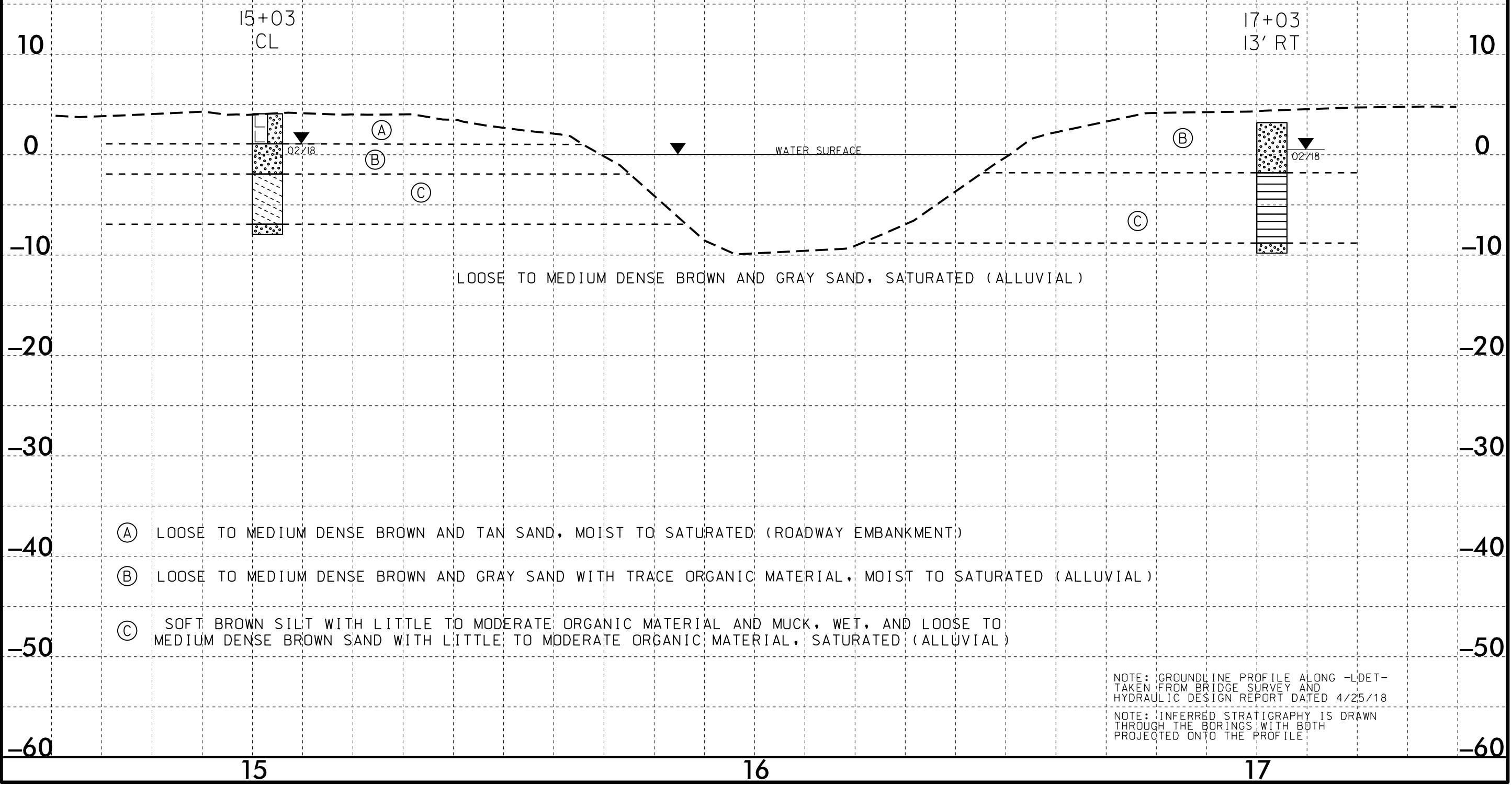
NOTE: GROUNDLINE PROFILE ALONG -L- TAKEN FROM BRIDGE SURVEY AND HYDRAULIC DESIGN REPORT DATED 4/25/18
 NOTE: INFERRED STRATIGRAPHY IS DRAWN THROUGH THE BORINGS WITH BOTH PROJECTED ONTO THE PROFILE

5/14/99

VE=2

PROJECT REFERENCE NO. B-4593	SHEET NO. 5
ROADWAY DESIGN ENGINEER	HYDRAULICS ENGINEER
INCOMPLETE PLANS DO NOT USE FOR R/W ACQUISITION	
DOCUMENT NOT CONSIDERED FINAL UNLESS ALL SIGNATURES COMPLETED	

PROFILE THROUGH BORINGS PROJECTED ALONG -LDET-



15+03
CL

17+03
13' RT

10

10

0

0

-10

-10

-20

-20

-30

-30

-40

-40

-50

-50

-60

-60

15

16

17

LOOSE TO MEDIUM DENSE BROWN AND GRAY SAND, SATURATED (ALLUVIAL)

(A) LOOSE TO MEDIUM DENSE BROWN AND TAN SAND, MOIST TO SATURATED (ROADWAY EMBANKMENT)

(B) LOOSE TO MEDIUM DENSE BROWN AND GRAY SAND WITH TRACE ORGANIC MATERIAL, MOIST TO SATURATED (ALLUVIAL)

(C) SOFT BROWN SILT WITH LITTLE TO MODERATE ORGANIC MATERIAL AND MUCK, WET, AND LOOSE TO MEDIUM DENSE BROWN SAND WITH LITTLE TO MODERATE ORGANIC MATERIAL, SATURATED (ALLUVIAL)

NOTE: GROUNDLINE PROFILE ALONG -LDET- TAKEN FROM BRIDGE SURVEY AND HYDRAULIC DESIGN REPORT DATED 4/25/18

NOTE: INFERRED STRATIGRAPHY IS DRAWN THROUGH THE BORINGS WITH BOTH PROJECTED ONTO THE PROFILE

14-JUN-2018 10:37 S:\ERDC\resville\Investigation\TIP\B4593_GEO.BROG0038\CADD\GEO\TECH\Plan\Prof\B4593_GEO.BROG.pfl_DET.lydgn

GEOTECHNICAL BORING REPORT

BORE LOG

WBS 38422.1.2		TIP B-4593		COUNTY PAMLICO		GEOLOGIST Cornette, C. J.	
SITE DESCRIPTION BRIDGE NUMBER 38 ON -L- (NC 55) OVER TRENT CREEK							GROUND WTR (ft)
BORING NO. EB1-B		STATION 16+22		OFFSET 8 ft RT		ALIGNMENT -L-	0 HR. N/A
COLLAR ELEV. 10.5 ft		TOTAL DEPTH 64.6 ft		NORTHING 500,790		EASTING 2,682,312	24 HR. 8.9
DRILL RIG/HAMMER EFF./DATE GFO0075 CME-45C 84% 08/21/2017				DRILL METHOD Mud Rotary		HAMMER TYPE Automatic	
DRILLER Smith, R. E.		START DATE 06/04/18		COMP. DATE 06/04/18		SURFACE WATER DEPTH N/A	

ELEV (ft)	DRIVE ELEV (ft)	DEPTH (ft)	BLOW COUNT			BLOWS PER FOOT					SAMP. NO.	LOG	SOIL AND ROCK DESCRIPTION			
			0.5ft	0.5ft	0.5ft	0	25	50	75	100			ELEV. (ft)	DEPTH (ft)		
15																
														10.5	GROUND SURFACE	0.0
10														8.4	PAVEMENT	2.1
	8.4	2.1	3	3	3									8.4	ROADWAY EMBANKMENT	
	6.5	4.0	2	3	2										GRAY AND TAN SAND, MOIST TO SATURATED	
5																
	2.4	8.1	2	1	3											
0																
	-2.6	13.1	1	1	2									-0.5	ALLUVIAL	11.0
-5															BROWN MUCK WITH WOOD FRAGMENTS, WET	
	-7.6	18.1	WOH	2	4									-5.5	ALLUVIAL	16.0
-10															GRAY SANDY CLAY WITH WOOD FRAGMENTS, WET	
	-12.6	23.1	8	9	8									-10.5	COASTAL PLAIN	21.0
-15															GRAY SAND WITH SHELL FRAGMENTS, SATURATED (YORKTOWN FORMATION)	
	-17.6	28.1	4	5	7											
-20																
	-22.6	33.1	14	28	29											
-25																
	-27.6	38.1	19	27	28											
-30																
	-32.6	43.1	12	27	44									-33.1		43.6
-35																
	-37.6	48.1	10	11	9									-35.5	COASTAL PLAIN	46.0
-40															GRAY SAND AND SHELL HASH, SATURATED (YORKTOWN FORMATION)	
	-42.6	53.1	6	11	17									-40.5	COASTAL PLAIN	51.0
-45															GRAY SAND AND SILTY SAND WITH SHELL FRAGMENTS, SATURATED (YORKTOWN FORMATION)	
	-47.6	58.1	5	5	6											
-50																
	-52.6	63.1	4	5	10									-54.1		64.6
															Boring Terminated at Elevation -54.1 ft in Medium Dense Sand	

NCDOT BORE DOUBLE B4593_GEO_BRDG0038.GPJ NC_DOT.GDT 6/14/18

GEOTECHNICAL BORING REPORT

BORE LOG

WBS 38422.1.2		TIP B-4593		COUNTY PAMLICO		GEOLOGIST Cornette, C. J.									
SITE DESCRIPTION BRIDGE NUMBER 38 ON -L- (NC 55) OVER TRENT CREEK							GROUND WTR (ft)								
BORING NO. B1-B		STATION 16+77		OFFSET 7 ft RT		ALIGNMENT -L-									
COLLAR ELEV. -4.0 ft		TOTAL DEPTH 75.1 ft		NORTHING 500,766		EASTING 2,682,361									
DRILL RIG/HAMMER EFF./DATE GFO0075 CME-45C 84% 08/21/2017				DRILL METHOD Mud Rotary		HAMMER TYPE Automatic									
DRILLER Smith, R. E.		START DATE 06/06/18		COMP. DATE 06/06/18		SURFACE WATER DEPTH 3.7ft									
ELEV (ft)	DRIVE ELEV (ft)	DEPTH (ft)	BLOW COUNT			BLOWS PER FOOT					SAMP. NO.	LOG	SOIL AND ROCK DESCRIPTION		
			0.5ft	0.5ft	0.5ft	0	25	50	75	100					ELEV. (ft)
0														WATER SURFACE (06/06/18)	
-5	-4.0	0.0	WOR	WOR	WOR									GROUND SURFACE 0.0	
-10	-8.3	4.3	1	0	1									ALLUVIAL BROWN MUCK, WET 2.0	
-15	-12.6	8.6	4	4	5									ALLUVIAL GRAY SAND WITH WOOD FRAGMENTS, SATURATED	
-20	-17.6	13.6	11	14	16									COASTAL PLAIN GRAY SAND WITH SHELL FRAGMENTS, SATURATED (YORKTOWN FORMATION) 12.0	
-25	-22.6	18.6	9	15	14										
-30	-27.6	23.6	8	11	21										
-35	-32.6	28.6	9	20	19										
-40	-37.6	33.6	5	7	17										
-45	-42.6	38.6	8	10	11									COASTAL PLAIN GRAY SAND AND SHELL HASH, SATURATED (YORKTOWN FORMATION) 39.8	
-50	-47.6	43.6	4	5	6									COASTAL PLAIN GRAY SAND AND SILTY SAND, SATURATED (YORKTOWN FORMATION)	
-55	-52.6	48.6	4	7	10										
-60	-57.6	53.6	4	4	6									COASTAL PLAIN GRAY SANDY AND CLAYEY SILT WITH SHELL FRAGMENTS, WET (YORKTOWN FORMATION) 52.0	
-65	-62.6	58.6	3	3	5										
-70	-67.6	63.6	3	5	8										
-75	-72.6	68.6	2	4	8										
	-77.6	73.6	8	8	10										
														Boring Terminated at Elevation -79.1 ft in Very Stiff Silt	

NCDOT BORE DOUBLE B4593_GEO_BRDG0038.GPJ NC_DOT.GDT 6/14/18

WBS 38422.1.2		TIP B-4593		COUNTY PAMLICO		GEOLOGIST Cornette, C. J.									
SITE DESCRIPTION BRIDGE NUMBER 38 ON -L- (NC 55) OVER TRENT CREEK							GROUND WTR (ft)								
BORING NO. B1-B		STATION 16+77		OFFSET 7 ft RT		ALIGNMENT -L-									
COLLAR ELEV. -4.0 ft		TOTAL DEPTH 75.1 ft		NORTHING 500,766		EASTING 2,682,361									
DRILL RIG/HAMMER EFF./DATE GFO0075 CME-45C 84% 08/21/2017				DRILL METHOD Mud Rotary		HAMMER TYPE Automatic									
DRILLER Smith, R. E.		START DATE 06/06/18		COMP. DATE 06/06/18		SURFACE WATER DEPTH 3.7ft									
ELEV (ft)	DRIVE ELEV (ft)	DEPTH (ft)	BLOW COUNT			BLOWS PER FOOT					SAMP. NO.	LOG	SOIL AND ROCK DESCRIPTION		
			0.5ft	0.5ft	0.5ft	0	25	50	75	100					ELEV. (ft)
-80														Match Line	

GEOTECHNICAL BORING REPORT

BORE LOG

WBS 38422.1.2		TIP B-4593		COUNTY PAMLICO		GEOLOGIST Zimarino, S. N.	
SITE DESCRIPTION BRIDGE NUMBER 38 ON -L- (NC 55) OVER TRENT CREEK							GROUND WTR (ft)
BORING NO. B2-B		STATION 17+27		OFFSET 7 ft RT		ALIGNMENT -L-	
COLLAR ELEV. -6.6 ft		TOTAL DEPTH 62.5 ft		NORTHING 500,744		EASTING 2,682,406	
DRILL RIG/HAMMER EFF./DATE GFO0075 CME-45C 84% 08/21/2017			DRILL METHOD Mud Rotary		HAMMER TYPE Automatic		
DRILLER Edmondson, J. M.		START DATE 06/06/18		COMP. DATE 06/06/18		SURFACE WATER DEPTH 7.2ft	

ELEV (ft)	DRIVE ELEV (ft)	DEPTH (ft)	BLOW COUNT			BLOWS PER FOOT					SAMP. NO.	LOG	SOIL AND ROCK DESCRIPTION	DEPTH (ft)	
			0.5ft	0.5ft	0.5ft	0	25	50	75	100					
5															
0															
-5	-6.6	0.0	WOR	WOR	WOR										
-10	-10.3	3.7	2	2	4										
-15	-15.3	8.7	2	2	5										
-20	-17.6	11.0	1	2	4										
-25	-22.6	16.0	11	21	28										
-30	-27.6	21.0	9	19	23										
-35	-32.6	26.0	7	15	20										
-40	-37.6	31.0	8	8	12										
-45	-42.6	36.0	5	12	16										
-50	-47.6	41.0	5	5	7										
-55	-52.6	46.0	3	5	8										
-60	-57.6	51.0	4	5	6										
-65	-62.6	56.0	1	5	7										
	-67.6	61.0	3	5	8										

ELEV. (ft)	SOIL AND ROCK DESCRIPTION	DEPTH (ft)
	GROUND SURFACE	0.0
-6.6	ALLUVIAL BROWN MUCK, WET	2.0
-8.6	ALLUVIAL BROWN AND GRAY SAND, SATURATED	2.0
-20.6	COASTAL PLAIN GRAY SAND, SATURATED (YORKTOWN FORMATION)	14.0
-40.6	COASTAL PLAIN GRAY SAND AND SHELL HASH, SATURATED (YORKTOWN FORMATION)	34.0
-50.6	COASTAL PLAIN GRAY SILTY SAND, SATURATED (YORKTOWN FORMATION)	44.0
-60.6	COASTAL PLAIN GRAY SANDY SILT, WET (YORKTOWN FORMATION)	54.0
-69.1	Boring Terminated at Elevation -69.1 ft in Stiff Silt	62.5

WBS 38422.1.2		TIP B-4593		COUNTY PAMLICO		GEOLOGIST Zimarino, S. N.	
SITE DESCRIPTION BRIDGE NUMBER 38 ON -L- (NC 55) OVER TRENT CREEK							GROUND WTR (ft)
BORING NO. EB2-B		STATION 17+82		OFFSET 8 ft RT		ALIGNMENT -L-	
COLLAR ELEV. 10.5 ft		TOTAL DEPTH 69.6 ft		NORTHING 500,719		EASTING 2,682,455	
DRILL RIG/HAMMER EFF./DATE GFO0075 CME-45C 84% 08/21/2017			DRILL METHOD Mud Rotary		HAMMER TYPE Automatic		
DRILLER Edmondson, J. M.		START DATE 06/04/18		COMP. DATE 06/05/18		SURFACE WATER DEPTH N/A	

ELEV (ft)	DRIVE ELEV (ft)	DEPTH (ft)	BLOW COUNT			BLOWS PER FOOT					SAMP. NO.	LOG	SOIL AND ROCK DESCRIPTION	DEPTH (ft)	
			0.5ft	0.5ft	0.5ft	0	25	50	75	100					
15															
10															
5	8.4	2.1	3	2	4										
0	6.4	4.1	1	2	2										
-5	2.4	8.1	1	2	1										
-10	-2.6	13.1	2	2	2										
-15	-7.6	18.1	WOH	2	7										
-20	-12.6	23.1	6	8	9										
-25	-17.6	28.1	7	8	15										
-30	-22.6	33.1	11	18	24										
-35	-27.6	38.1	9	15	20										
-40	-32.6	43.1	11	17	24										
-45	-37.6	48.1	3	7	15										
-50	-42.6	53.1	11	9	11										
-55	-47.6	58.1	3	4	5										
-60	-52.6	63.1	4	6	9										
-65	-57.6	68.1	5	6	9										

ELEV. (ft)	SOIL AND ROCK DESCRIPTION	DEPTH (ft)
10.5	GROUND SURFACE PAVEMENT	0.0
8.4	ROADWAY EMBANKMENT GRAY AND TAN SAND, MOIST TO SATURATED	2.1
-0.5	ALLUVIAL BROWN MUCK WITH WOOD FRAGMENTS, WET	11.0
-5.5	ALLUVIAL GRAY SAND WITH WOOD FRAGMENTS, SATURATED	16.0
-10.5	COASTAL PLAIN GRAY SAND, SATURATED (YORKTOWN FORMATION)	21.0
-33.1	COASTAL PLAIN GRAY SAND AND SHELL HASH, SATURATED (YORKTOWN FORMATION)	43.6
-35.5	COASTAL PLAIN GRAY SAND AND SHELL HASH, SATURATED (YORKTOWN FORMATION)	46.0
-40.5	COASTAL PLAIN GRAY SAND AND SILTY SAND WITH SHELL FRAGMENTS, SATURATED (YORKTOWN FORMATION)	51.0
-55.5	COASTAL PLAIN GRAY SANDY SILT WITH SHELL FRAGMENTS, WET (YORKTOWN FORMATION)	66.0
-59.1	Boring Terminated at Elevation -59.1 ft in Very Stiff Silt	69.6

NCDOT BORE DOUBLE B4593_GEO_BRDG0038.GPJ NC_DOT.GDT 6/14/18

GEOTECHNICAL BORING REPORT

BORE LOG

WBS 38422.1.2		TIP B-4593		COUNTY PAMLICO		GEOLOGIST Zimarino, S. N.										
SITE DESCRIPTION BRIDGE NUMBER 38 ON -L- (NC 55) OVER TRENT CREEK							GROUND WTR (ft)									
BORING NO. 15+03		STATION 15+03		OFFSET CL		ALIGNMENT -LDET-										
COLLAR ELEV. 4.0 ft		TOTAL DEPTH 12.0 ft		NORTHING 500,766		EASTING 2,682,276										
DRILL RIG/HAMMER EFF./DATE N/A		DRILL METHOD Hand Auger		HAMMER TYPE N/A												
DRILLER Edmondson, J. M.		START DATE 02/19/18		COMP. DATE 02/19/18		SURFACE WATER DEPTH N/A										
ELEV (ft)	DRIVE ELEV (ft)	DEPTH (ft)	BLOW COUNT			BLOWS PER FOOT					SAMP. NO.	LOG MOI	SOIL AND ROCK DESCRIPTION	DEPTH (ft)		
			0.5ft	0.5ft	0.5ft	0	25	50	75	100						
5														4.0	GROUND SURFACE	0.0
														1.0	ROADWAY EMBANKMENT LOOSE TO MEDIUM DENSE BROWN AND TAN SAND, MOIST TO SATURATED	3.0
0														2.0	ALLUVIAL LOOSE TO MEDIUM DENSE BROWN AND GRAY SAND WITH TRACE ORGANIC MATERIAL, MOIST TO SATURATED	6.0
														7.0	LOOSE TO MEDIUM DENSE BROWN SAND WITH LITTLE TO MODERATE ORGANIC MATERIAL, SATURATED	11.0
-5														8.0	LOOSE TO MEDIUM DENSE BROWN AND GRAY SAND, SATURATED	12.0
															Boring Terminated at Elevation -8.0 ft in Loose Sand	

WBS 38422.1.2		TIP B-4593		COUNTY PAMLICO		GEOLOGIST Zimarino, S. N.										
SITE DESCRIPTION BRIDGE NUMBER 38 ON -L- (NC 55) OVER TRENT CREEK							GROUND WTR (ft)									
BORING NO. 17+03		STATION 17+03		OFFSET 13 ft RT		ALIGNMENT -LDET-										
COLLAR ELEV. 3.2 ft		TOTAL DEPTH 13.0 ft		NORTHING 500,667		EASTING 2,682,450										
DRILL RIG/HAMMER EFF./DATE N/A		DRILL METHOD Hand Auger		HAMMER TYPE N/A												
DRILLER Edmondson, J. M.		START DATE 02/19/18		COMP. DATE 02/19/18		SURFACE WATER DEPTH N/A										
ELEV (ft)	DRIVE ELEV (ft)	DEPTH (ft)	BLOW COUNT			BLOWS PER FOOT					SAMP. NO.	LOG MOI	SOIL AND ROCK DESCRIPTION	DEPTH (ft)		
			0.5ft	0.5ft	0.5ft	0	25	50	75	100						
5														3.2	GROUND SURFACE	0.0
														1.8	ALLUVIAL LOOSE TO MEDIUM DENSE BROWN AND GRAY SAND WITH TRACE ORGANIC MATERIAL, MOIST TO SATURATED	5.0
0															SOFT BROWN SILT WITH LITTLE TO MODERATE ORGANIC MATERIAL, WET	
														8.8	LOOSE TO MEDIUM DENSE BROWN AND GRAY SAND, SATURATED	12.0
-5														9.8	LOOSE TO MEDIUM DENSE BROWN AND GRAY SAND, SATURATED	13.0
															Boring Terminated at Elevation -9.8 ft in Loose Sand	

NCDOT BORE DOUBLE B4593_GEO_BRDG0038.GPJ NC_DOT.GDT 6/14/18