

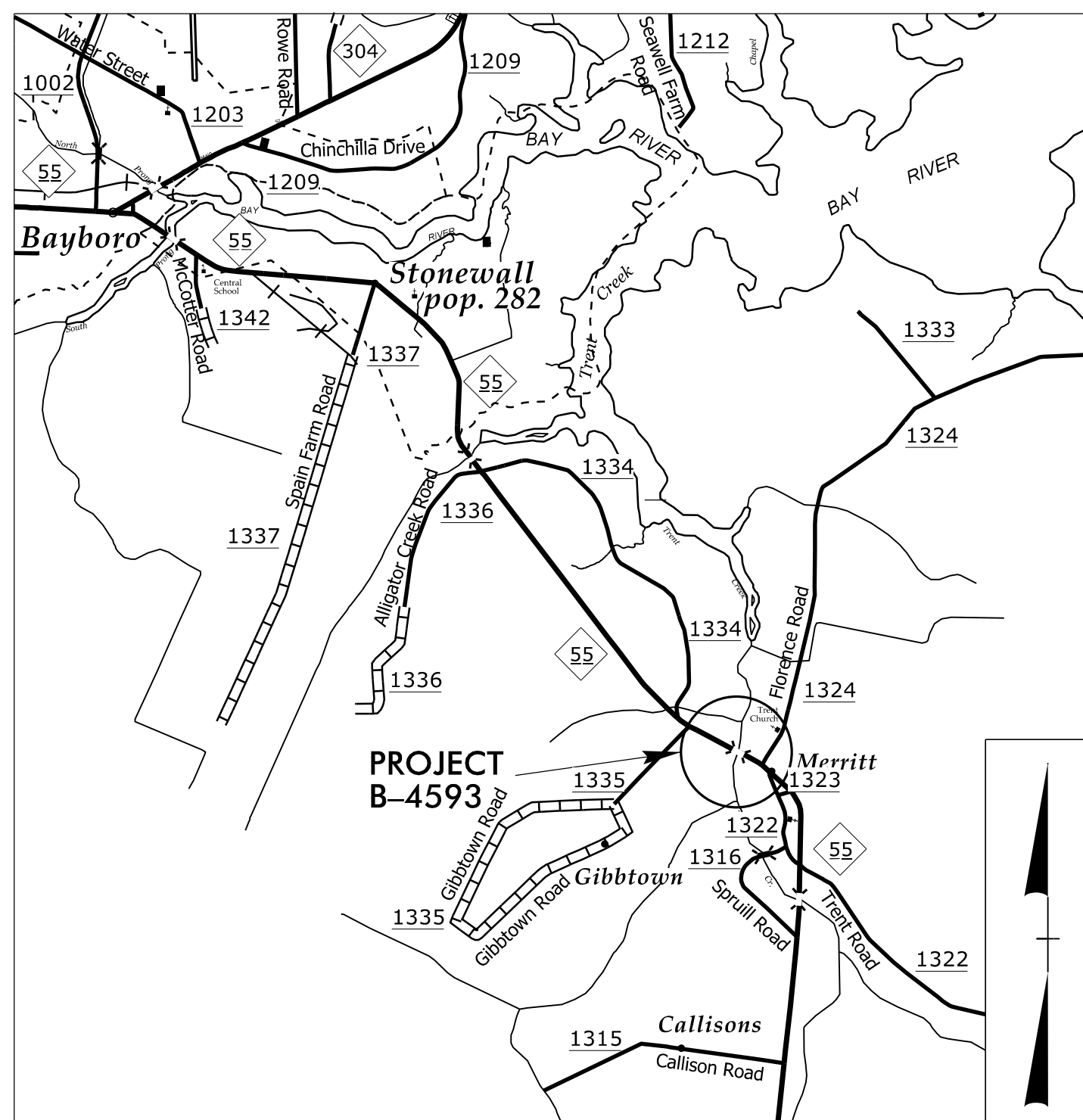
**This electronic collection of documents is provided  
for the convenience of the user  
and is Not a Certified Document –**

**The documents contained herein were originally issued  
and sealed by the individuals whose names and license  
numbers appear on each page, on the dates appearing  
with their signature on that page.**

**This file or an individual page  
shall not be considered a certified document.**

09/08/09

TIP PROJECT: B-4593



VICINITY MAP

STATE OF NORTH CAROLINA  
DIVISION OF HIGHWAYS

**UTILITIES BY OTHERS PLANS  
PAMLICO COUNTY**

**LOCATION: BRIDGE NO. 38 ON NC 55 OVER TRENT CREEK**  
**TYPE OF WORK: ELECTRIC POWER DISTRIBUTION AND COMMUNICATIONS.**

T.I.P. NO.

B-4593

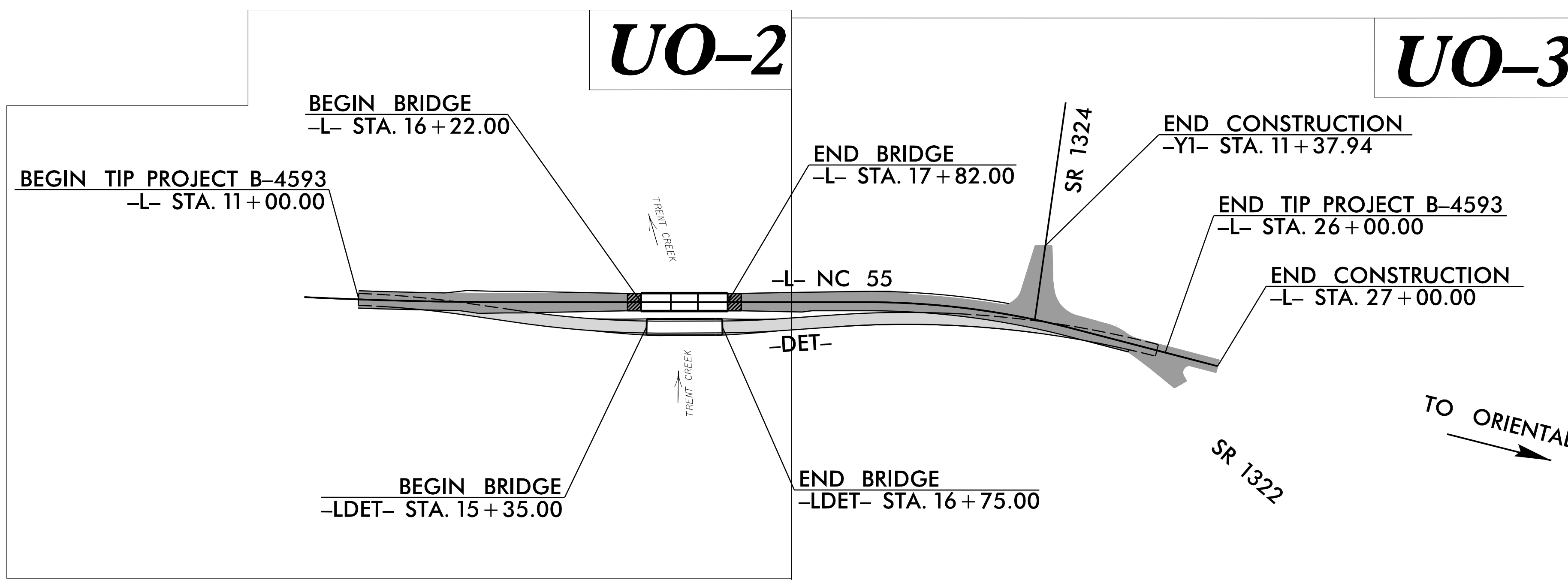
SHEET NO.

UO-1

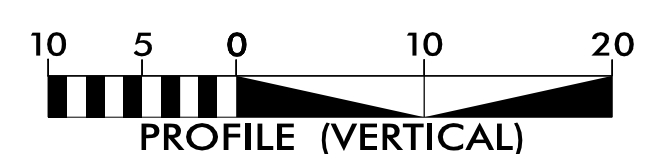
NOTE:  
ALL UTILITY WORK SHOWN ON THIS SHEET WILL BE DONE BY OTHERS. NO PAYMENT WILL BE MADE TO THE CONTRACTOR FOR UTILITY WORK SHOWN ON THIS SHEET.



TO BAYBORO



GRAPHIC SCALES



INDEX OF SHEETS

SHEET NO.:

UO-1  
UO-2 THRU UO-3

DESCRIPTION:

TITLE SHEET  
UBO PLAN SHEETS

UTILITY OWNERS WITH CONFLICTS

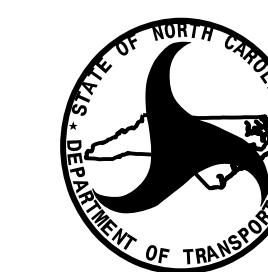
- (A) POWER DISTRIBUTION - DUKE ENERGY
- (B) TELEPHONE - CENTURYLINK
- (C) CABLE TV - SPECTRUM

PREPARED IN THE OFFICE OF:



**TELICS**  
1598 WESTBROOK PLAZA DR.  
SUITE 202  
WINSTON-SALEM, NC 27103  
(336) 803-6038

Jim Brooks UTILITY PROJECT MANAGER  
Chris Kennedy PROJECT UTILITY COORDINATOR



**DIVISION OF HIGHWAYS  
UTILITIES UNIT**  
1555 MAIL SERVICES CENTER  
RALEIGH NC 27699-1555  
PHONE (919) 707-6690  
FAX (919) 250-4151

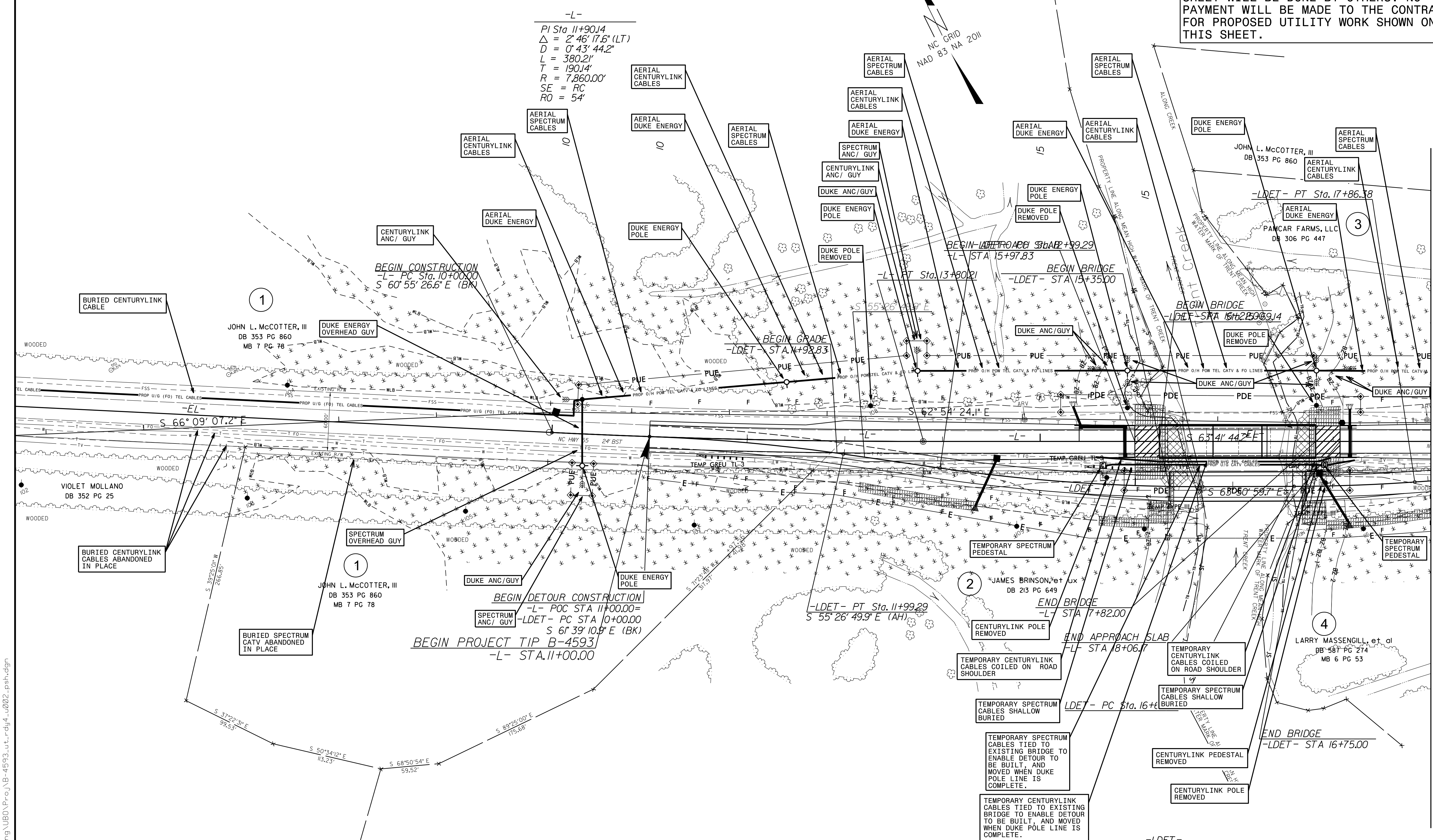
Nabil Hamdan REGIONAL UTILITIES ENGINEER  
Kelvin Martin SENIOR UTILITIES ENGINEER  
Tanga Sampson REGIONAL UTILITY COORDINATOR  
Larry James SENIOR UTILITY COORDINATOR

30-MAY-2022 2:453  
C:\UBO\_FILES\2018\B-4593\Utilities\Engineering\UBO\Proj\B-4593\_ut\_tsh\_u001.psh.dgn  
\$\$\$USERNAME\$\$\$

UTILITIES BY OTHERS

ALL PROPOSED UTILITY WORK SHOWN ON THIS SHEET WILL BE DONE BY OTHERS. NO PAYMENT WILL BE MADE TO THE CONTRACTOR FOR PROPOSED UTILITY WORK SHOWN ON THIS SHEET.

5/14/19



-L-  
 PI Sta 11+90.14  
 $\Delta = 2^\circ 46' 17.6''$  (LT)  
 $D = 0^\circ 43' 44.2''$   
 $L = 380.21'$   
 $T = 190.14'$   
 $R = 7,860.00'$   
 SE = RC  
 RO = 54'

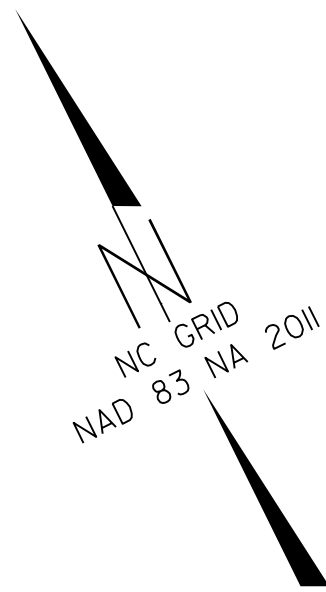
-LDET-  
 PI Sta 10+99.74  $\Delta = 6^\circ 12' 21.0''$  (RT)  $L = 199.29'$   $T = 99.74'$   $R = 1,840.00'$   $SE = 04'$   $RO = 96'$   
 PI Sta 14+34.46  $\Delta = 8^\circ 24' 09.8''$  (LT)  $L = 269.85'$   $T = 135.16'$   $R = 1,840.00'$   $SE = 04'$   $RO = 96'$   
 PI Sta 17+24.58  $\Delta = 3^\circ 51' 00.3''$  (LT)  $L = 123.64'$   $T = 61.84'$   $R = 1,840.00'$   $SE = 04'$   $RO = 96'$

MATCHLINE -L- STA 19 + 00.00 (SEE SHEET UO-3)

18:\B-4593\18-4593-19-00-00.dgn  
 30 MAY 2022 2:30 PM  
 18-4593-19-00-00.dgn

**UTILITIES BY OTHERS**

ALL PROPOSED UTILITY WORK SHOWN ON THIS SHEET WILL BE DONE BY OTHERS. NO PAYMENT WILL BE MADE TO THE CONTRACTOR FOR PROPOSED UTILITY WORK SHOWN ON THIS SHEET.



-L-  
 PI Sta 22+31.44  
 $\Delta = 14' 34' 16.6'' (RT)$   
 $D = 3' 48' 25.3''$   
 $L = 382.75'$   
 $T = 192.41'$   
 $R = 1,505.00'$   
 $SE = 06$   
 $RO = SEE PLANS$

-YI- POT Sta. 14+05.50

END DETOUR CONSTRUCTION OF FACING  
 -L- STA. 25+00.00  
 -LDET- PT STA. 24+82.92  
 $S 49^{\circ} 07' 27.6'' E (AH)$

END PROJECT TIP B-4593  
 -L- STA. 26+00.00

BEGIN RESURFACING  
 -YI- STA. 10+12.04

-L- POT Sta. 27+00.00

END CONSTRUCTION  
 -L- STA. 27+00.00

PAMCAR FARMS, LLC  
 DB 306 PG 447  
 -YI- POT Sta. 10+00.00  
 -L- STA. 23+51.63

LARRY MASSENGILL, et al  
 DB 587 PG 274  
 MB 6 PG 53

PAMCAR FARMS, LLC  
 DB 306 PG 447

STEVEN LAVALLEE  
 DB 337 PG 755  
 DB 470 PG 147

PAMCAR FARMS, LLC  
 DB 306 PG 447

JOHN L. MCCOTTER, III  
 DB 353 PG 860

PAMCAR FARMS, LLC  
 DB 306 PG 447

PAMCAR FARMS, LLC  
 DB 306 PG 447

LARRY MASSENGILL, et al  
 DB 587 PG 274  
 MB 6 PG 53

ANDREW M. BUEHL  
 DB 518 PG 71

LARRY MASSENGILL, et al  
 DB 587 PG 274  
 MB 6 PG 53

-LDET-  

PI Sta 17+24.58	PI Sta 21+87.29
$\Delta = 3' 51' 00.3'' (LT)$	$\Delta = 18' 34' 32.4'' (RT)$
$D = 3' 06' 50.0''$	$D = 3' 06' 50.0''$
$L = 123.64'$	$L = 596.54'$
$T = 61.84'$	$T = 300.91'$
$R = 1,840.00'$	$R = 1,840.00'$
$SE = 04$	$SE = 04$
$RO = 96'$	$RO = 96'$

MATCHLINE -L- STA 19 + 00.00 (SEE SHEET U0-2)

5/14/99

30-MAY-2022, 2:48  
 219\B-4593\Engineering\UB0\Proj\B-4593.ut\_rdy5\_u003.psh.dgn