

**This electronic collection of documents is provided  
for the convenience of the user  
and is Not a Certified Document –**

**The documents contained herein were originally issued  
and sealed by the individuals whose names and license  
numbers appear on each page, on the dates appearing  
with their signature on that page.**

**This file or an individual page  
shall not be considered a certified document.**

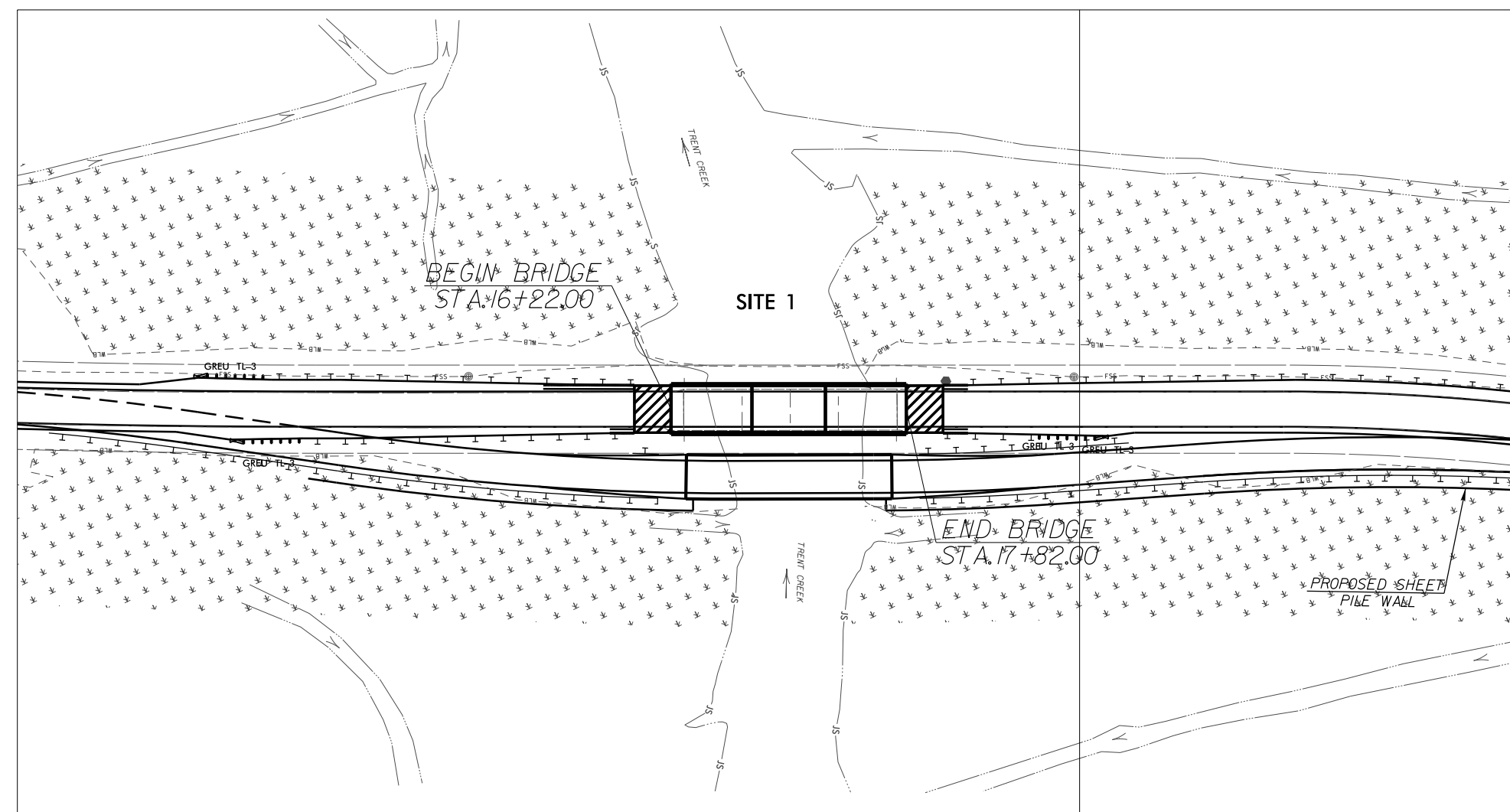
TIP PROJECT: B-4593

STATE OF NORTH CAROLINA  
DIVISION OF HIGHWAYS  
PLAN FOR PROPOSED  
HIGHWAY EROSION CONTROL  
PAMLICO COUNTY

LOCATION: REPLACE BRIDGE 690038 OVER TRENT CREEK  
ON NC 55  
TYPE OF WORK: GRADING, DRAINAGE, PAVING, AND STRUCTURE



TO SR 1335  
GIBBTOWN ROAD



TO SR 1324  
FLORENCE ROAD

STATE	STATE PROJECT REFERENCE NO.	SHEET NO.	TOTAL SHEETS
N.C.	B-4593	EC-1	
STATE PROJ. NO.	F.A. PROJ. NO.	DESCRIPTION	

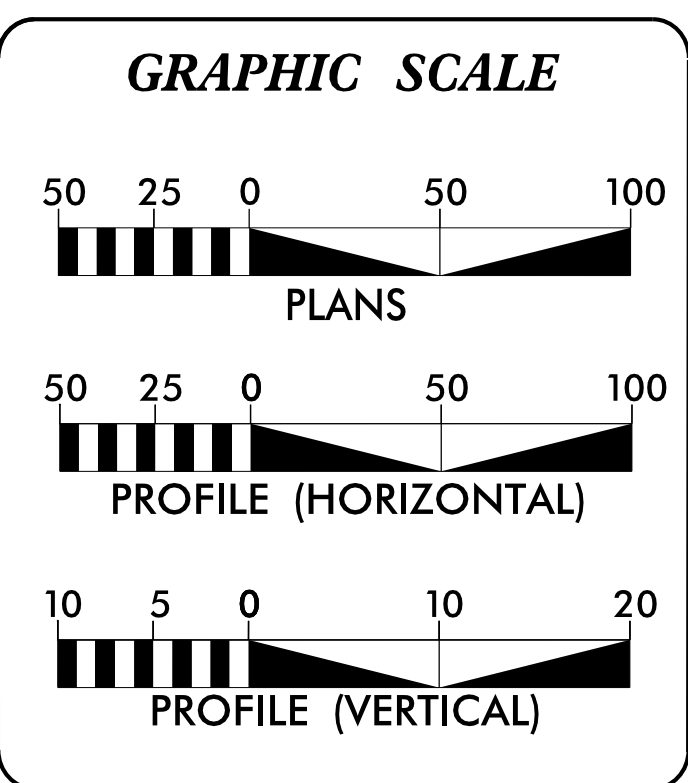
EROSION AND SEDIMENT CONTROL MEASURES

Std. #	Description	Symbol
1630.05	Temporary Silt Ditch	TD
1630.05	Temporary Diversion	TD
1605.01	Temporary Silt Fence	III III III
1606.01	Special Sediment Control Fence	III III III
1622.01	Temporary Berms and Slope Drains	TSD
1630.02	Silt Basin Type B	SB
1633.01	Temporary Rock Silt Check Type-A	TRSA
	Temporary Rock Silt Check Type-A with Matting and Polyacrylamide (PAM)	TRSA-PAM
1633.02	Temporary Rock Silt Check Type-B	TRSB
	Wattle / Coir Fiber Wattle	W
	Wattle / Coir Fiber Wattle with Polyacrylamide (PAM)	W-PAM
1634.01	Temporary Rock Sediment Dam Type-A	TRSDA
1634.02	Temporary Rock Sediment Dam Type-B	TRSDB
1655.01	Rock Pipe Inlet Sediment Trap Type-A	RPISTRA
1655.02	Rock Pipe Inlet Sediment Trap Type-B	RPISTRB
1630.04	Stilling Basin	SB
1630.06	Special Stilling Basin	SSB
	Rock Inlet Sediment Trap:	
1632.01	Type A	A
1632.02	Type B	B
1632.03	Type C	C
	Skimmer Basin	SKB
	Tiered Skimmer Basin	TSKB
	Infiltration Basin	IB

ENVIRONMENTALLY SENSITIVE AREA(S) EXIST ON THIS PROJECT  
Refer To E. C. Special Provisions for Special Considerations.

THIS PROJECT HAS BEEN DESIGNED TO SENSITIVE WATERSHED STANDARDS.

THIS PROJECT CONTAINS EROSION CONTROL PLANS FOR CLEARING AND GRUBBING PHASE OF CONSTRUCTION.



THESE EROSION AND SEDIMENT CONTROL PLANS COMPLY WITH THE REGULATIONS SET FORTH BY THE NCG-010000 GENERAL CONSTRUCTION PERMIT EFFECTIVE APRIL 1, 2019 AND ISSUED BY THE NORTH CAROLINA DEPARTMENT OF ENVIRONMENTAL QUALITY DIVISION OF WATER RESOURCES.

Prepared in the Office of:

504 Meadowland Drive  
Hillsborough, NC 27278-8551  
Voice: (919) 732-3883  
Fax: (919) 732-6776  
www.summitde.net

Designed by:  
**PATRICK HARTNETT** 4124  
NAME LEVEL III CERTIFICATION NO.

Prepared in the Office of:

**ROADSIDE ENVIRONMENTAL UNIT**  
1 South Wilmington St.  
Raleigh, NC 27611

2018 STANDARD SPECIFICATIONS

Reviewed by:  
**WES CHANDLER, PE**

Roadway Standard Drawings

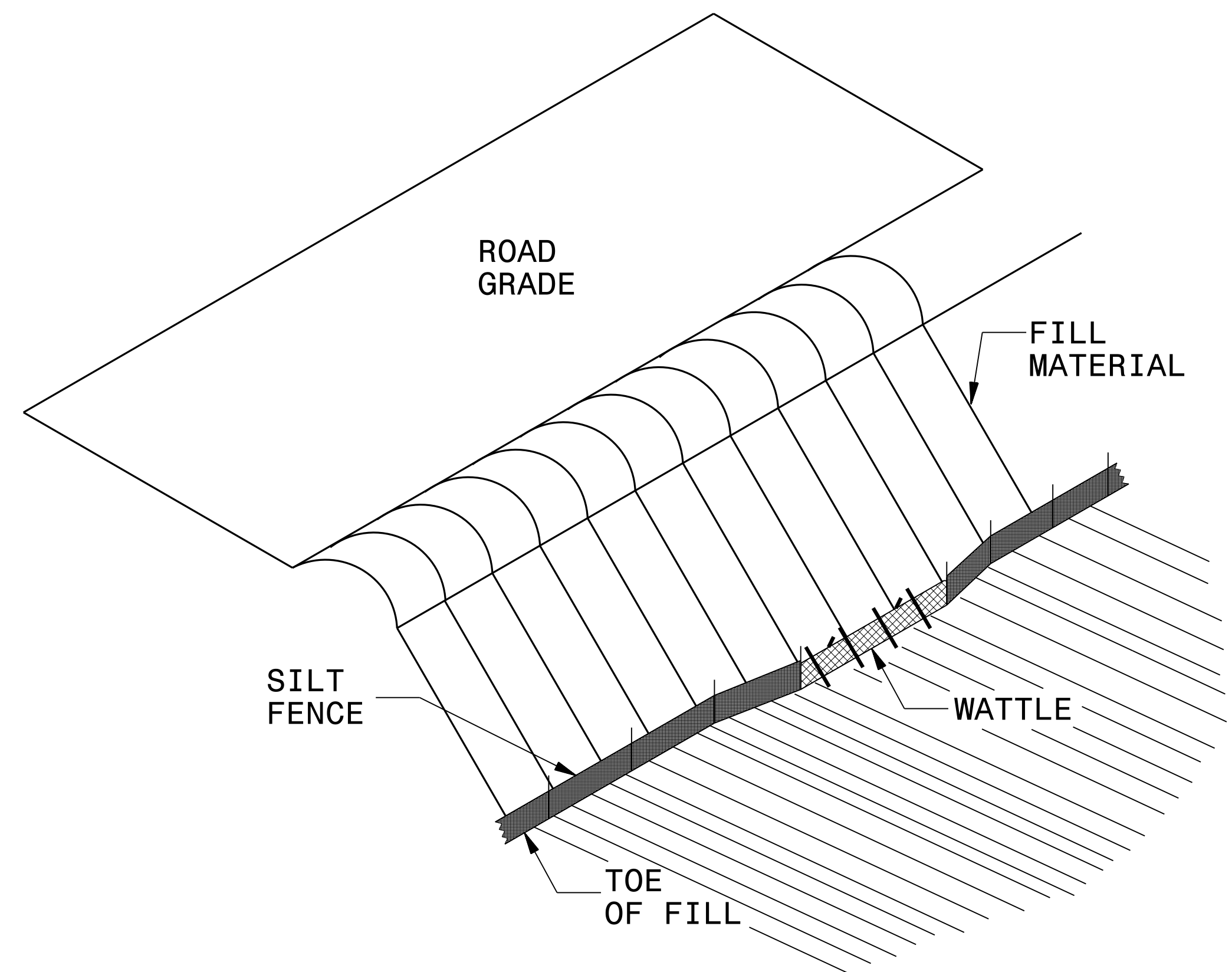
The following roadway english standards as appear in "Roadway Standard Drawings"- Roadway Design Unit - N. C. Department of Transportation - Raleigh, N. C., dated January 2018 and the latest revision thereto are applicable to this project and by reference hereby are considered a part of these plans.

1604.01 Railroad Erosion Control Detail	1632.01 Rock Inlet Sediment Trap Type A
1605.01 Temporary Silt Fence	1632.02 Rock Inlet Sediment Trap Type B
1606.01 Special Sediment Control Fence	1632.03 Rock Inlet Sediment Trap Type C
1607.01 Gravel Construction Entrance	1633.01 Temporary Rock Silt Check Type A
1622.01 Temporary Berms and Slope Drains	1633.02 Temporary Rock Silt Check Type B
1630.01 Riser Basin	1634.01 Temporary Rock Sediment Dam Type A
1630.02 Silt Basin Type B	1634.02 Temporary Rock Sediment Dam Type B
1630.03 Temporary Silt Ditch	1635.01 Rock Pipe Inlet Sediment Trap Type A
1630.04 Stilling Basin	1635.02 Rock Pipe Inlet Sediment Trap Type B
1630.05 Temporary Diversion	1640.01 Coir Fiber Baffle
1630.06 Special Stilling Basin	1645.01 Temporary Stream Crossing
1631.01 Matting Installation	

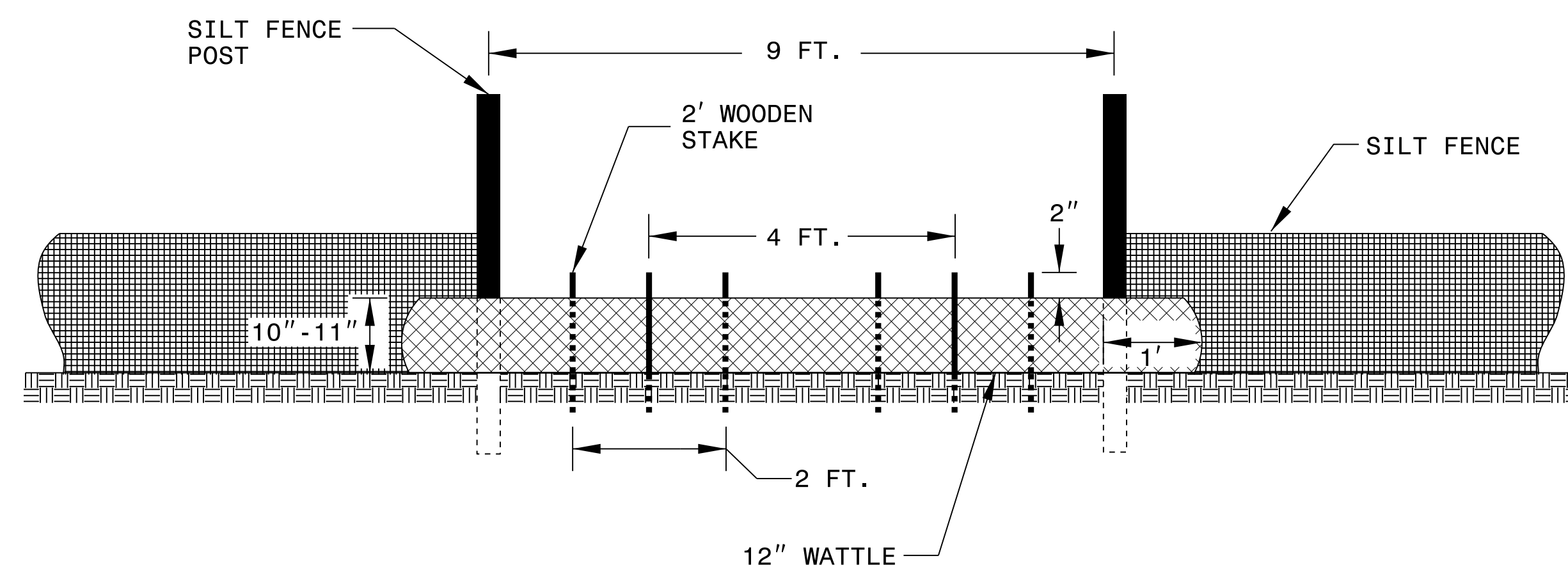
11-APR-2019 08:30 Patrick.Hartnett

# SILT FENCE COIR FIBER WATTLE BREAK DETAIL

PROJECT REFERENCE NO. <i>B-4593</i>	SHEET NO. <i>EC-2</i>
R/W SHEET NO.	
ROADWAY DESIGN ENGINEER	HYDRAULICS ENGINEER



**ISOMETRIC VIEW**

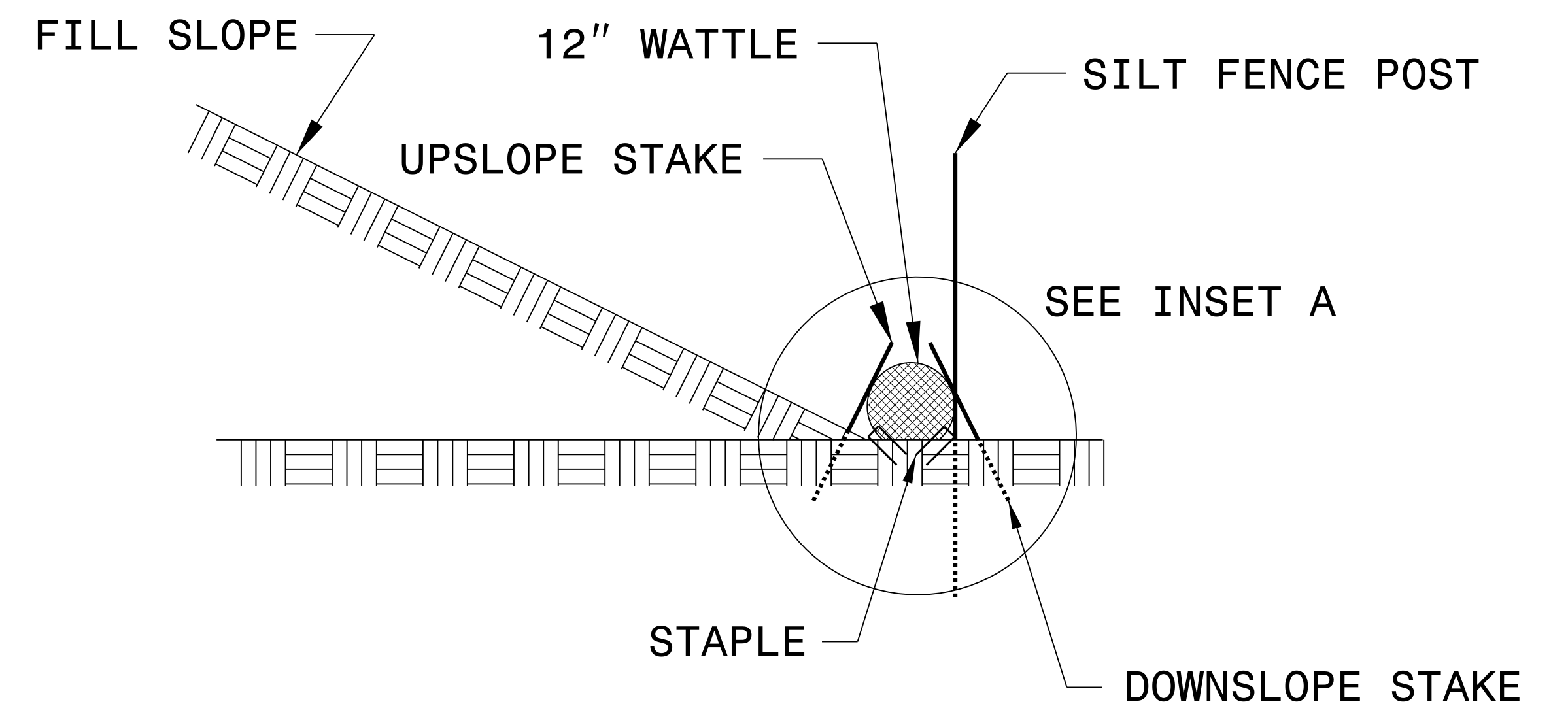
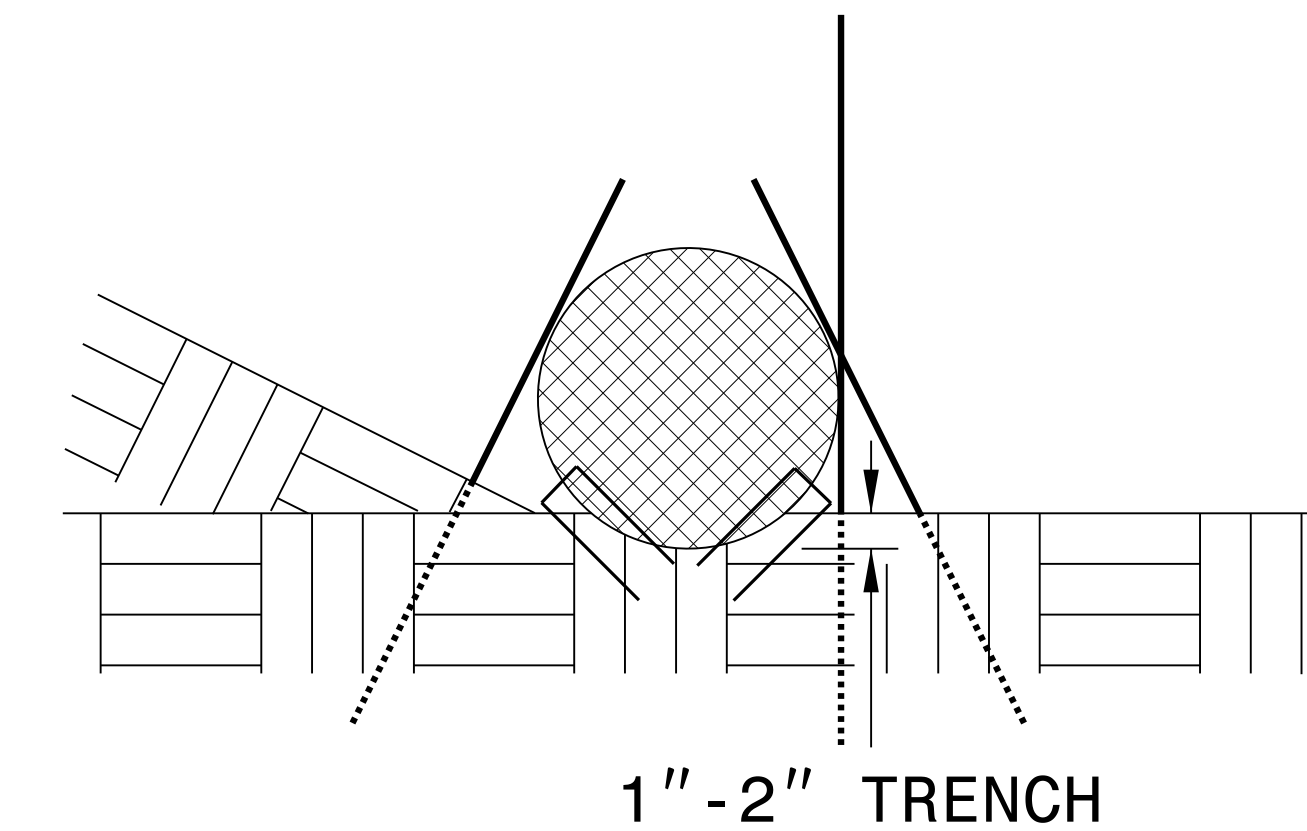


**VIEW FROM SLOPE**

**NOTES:**

- USE MINIMUM 12 IN. DIAMETER EXCELSIOR WATTLE AND LENGTH OF 10 FT.
- EXCAVATE A 1 TO 2 INCH TRENCH FOR WATTLE TO BE PLACED.
- DO NOT PLACE WATTLE ON TOE OF SLOPE.
- USE 2 FT. WOODEN STAKES WITH A 2 IN. BY 2 IN. NOMINAL CROSS SECTION.
- INSTALL A MINIMUM OF 2 UPSLOPE STAKES AND 4 DOWNSLOPE STAKES AT AN ANGLE TO WEDGE WATTLE TO GROUND.
- PROVIDE STAPLES MADE OF 0.125 IN. DIAMETER STEEL WIRE FORMED INTO A U SHAPE NOT LESS THAN 12" IN LENGTH.
- INSTALL STAPLES APPROXIMATELY EVERY 1 LINEAR FOOT ON BOTH SIDES OF WATTLE AND AT EACH END TO SECURE IT TO THE SOIL.
- WATTLE INSTALLATION CAN BE ON OUTSIDE OF THE SILT FENCE AS DIRECTED.
- INSTALL TEMPORARY SILT FENCE IN ACCORDANCE WITH SECTION 1605 OF THE STANDARD SPECIFICATIONS.

**INSET A**



**SIDE VIEW**

DIVISION OF HIGHWAYS  
STATE OF NORTH CAROLINA

---



---

PROJECT REFERENCE NO. <i>B-4593</i>	SHEET NO. <i>EC-3</i>
ROADWAY DESIGN ENGINEER	HYDRAULICS ENGINEER

# ***SOIL STABILIZATION TIMEFRAMES***

<i>SITE DESCRIPTION</i>	<i>STABILIZATION TIME</i>	<i>TIMEFRAME EXCEPTIONS</i>
PERIMETER DIKES, SWALES, DITCHES AND SLOPES	7 DAYS	NONE
HIGH QUALITY WATER (HQW) ZONES	7 DAYS	NONE
SLOPES STEEPER THAN 3:1	7 DAYS	IF SLOPES ARE 10' OR LESS IN LENGTH AND ARE NOT STEEPER THAN 2:1, 14 DAYS ARE ALLOWED.
SLOPES 3:1 OR FLATTER	14 DAYS	7 DAYS FOR SLOPES GREATER THAN 50' IN LENGTH.
ALL OTHER AREAS WITH SLOPES FLATTER THAN 4:1	14 DAYS	NONE, EXCEPT FOR PERIMETERS AND HQW ZONES.

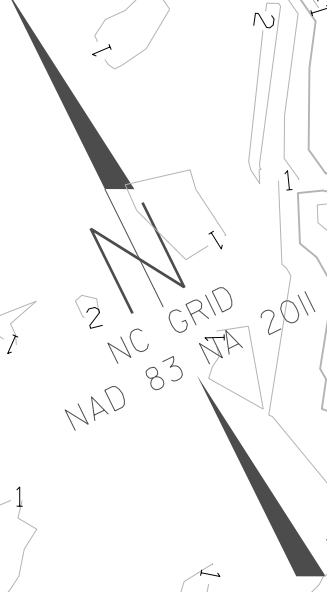
PROJECT REFERENCE NO. B-4593	SHEET NO. EC-4/CONST. 4
R/W SHEET NO.	
ROADWAY DESIGN ENGINEER	HYDRAULICS ENGINEER

CLEARING AND GRUBBING  
EROSION CONTROL FOR  
CONSTRUCTION SHEET 4

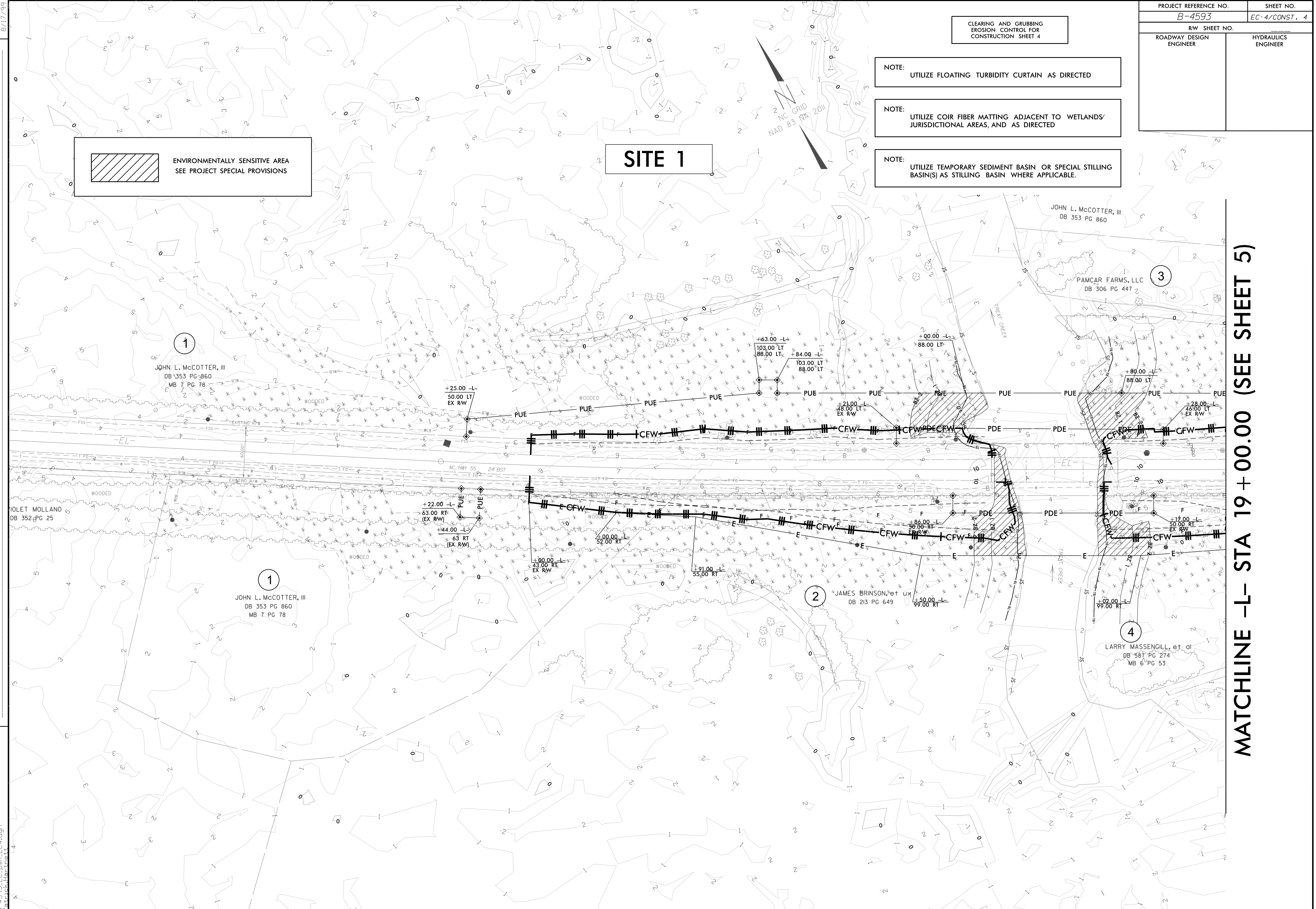
- NOTE:  
UTILIZE FLOATING TURBIDITY CURTAIN AS DIRECTED
- NOTE:  
UTILIZE COIR FIBER MATTING ADJACENT TO WETLANDS/  
JURISDICTIONAL AREAS, AND AS DIRECTED
- NOTE:  
UTILIZE TEMPORARY SEDIMENT BASIN OR SPECIAL STILLING  
BASIN(S) AS STILLING BASIN WHERE APPLICABLE.

 ENVIRONMENTALLY SENSITIVE AREA  
SEE PROJECT SPECIAL PROVISIONS

**SITE 1**



REVISIONS

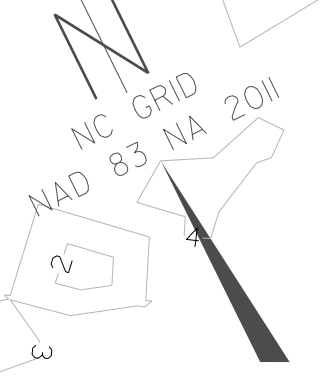


MATCHLINE -L- STA 19+00.00 (SEE SHEET 5)

8/17/99

PROJECT REFERENCE NO.		SHEET NO.	
B-4593		EC-5/CONST. 5	
RW SHEET NO.		HYDRAULICS ENGINEER	
ROADWAY DESIGN ENGINEER			

CLEARING AND GRUBBING  
EROSION CONTROL FOR  
CONSTRUCTION SHEET 5



NOTE: UTILIZE FLOATING TURBIDITY CURTAIN AS DIRECTED

NOTE: UTILIZE COIR FIBER MATTING ADJACENT TO WETLANDS/ JURISDICTIONAL AREAS, AND AS DIRECTED

NOTE: UTILIZE TEMPORARY SEDIMENT BASIN OR SPECIAL STILLING BASIN(S) AS STILLING BASIN WHERE APPLICABLE.

MATCHLINE -L- STA 19+00.00 (SEE SHEET 5)

REVISIONS

SITE 1

PAMCAR FARMS, LLC  
DB 306 PG 447

JOHN L. McCOTTER, III  
DB 353 PG 860

PAMCAR FARMS, LLC  
DB 306 PG 447

PAMCAR FARMS, LLC  
DB 306 PG 447

LARRY MASSENGILL, et al  
DB 587 PG 274  
MB 6 PG 53

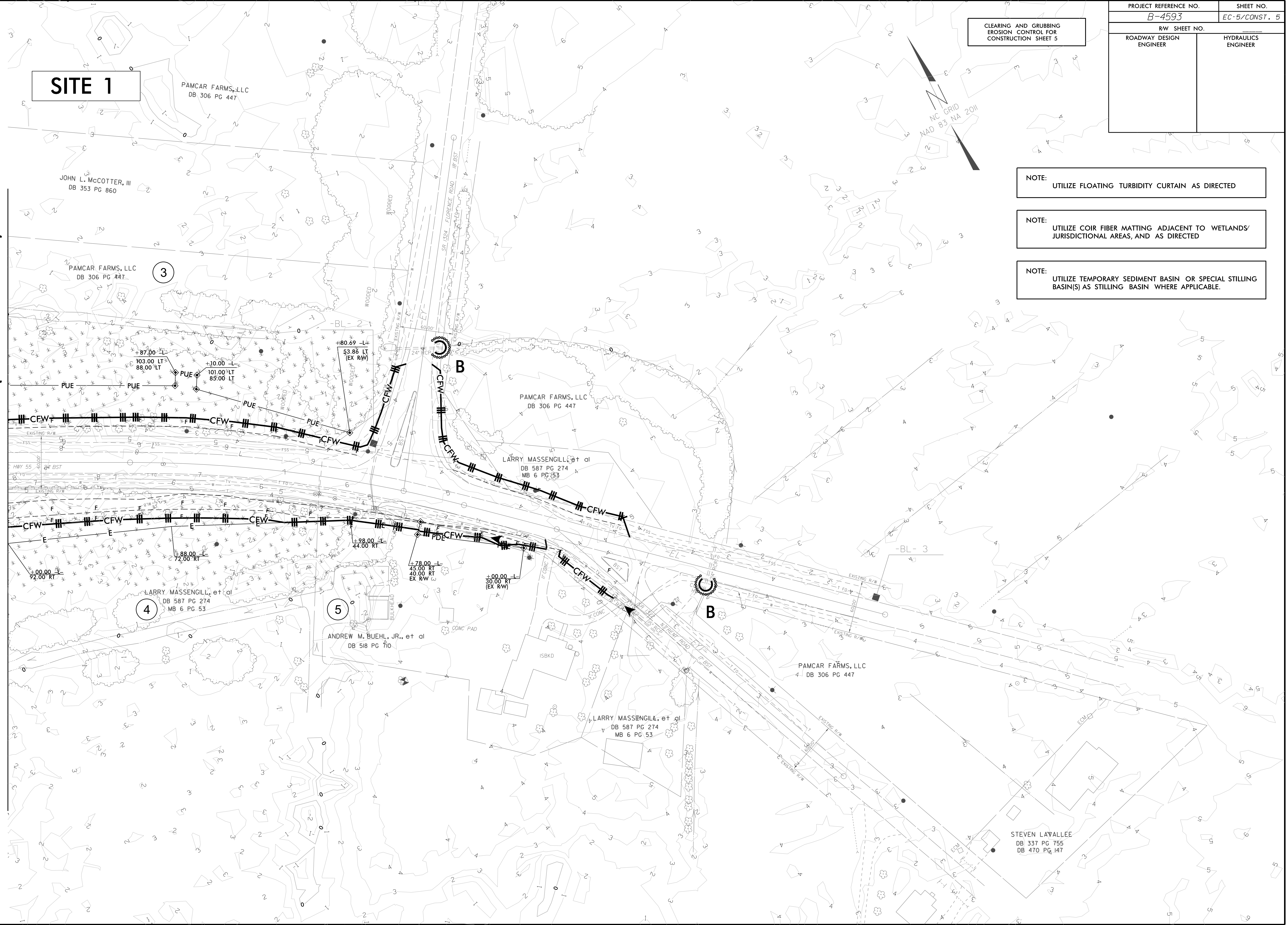
LARRY MASSENGILL, et al  
DB 587 PG 274  
MB 6 PG 53

ANDREW M. BUEHL, JR., et al  
DB 518 PG 710

LARRY MASSENGILL, et al  
DB 587 PG 274  
MB 6 PG 53

PAMCAR FARMS, LLC  
DB 306 PG 447

STEVEN L'AVALLEE  
DB 337 PG 755  
DB 470 PG 147



11-APR-2019 08:30  
B-4593.ec\_pah.ec5.dgn  
arackib

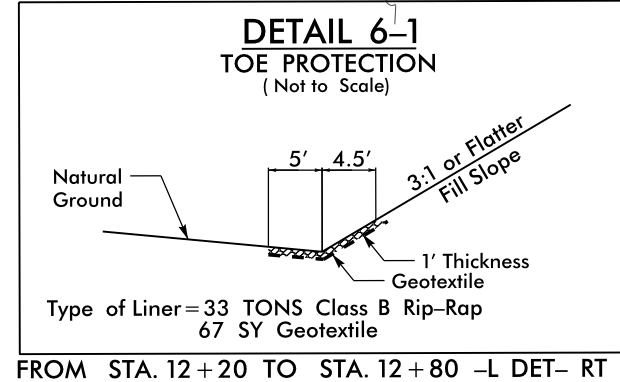
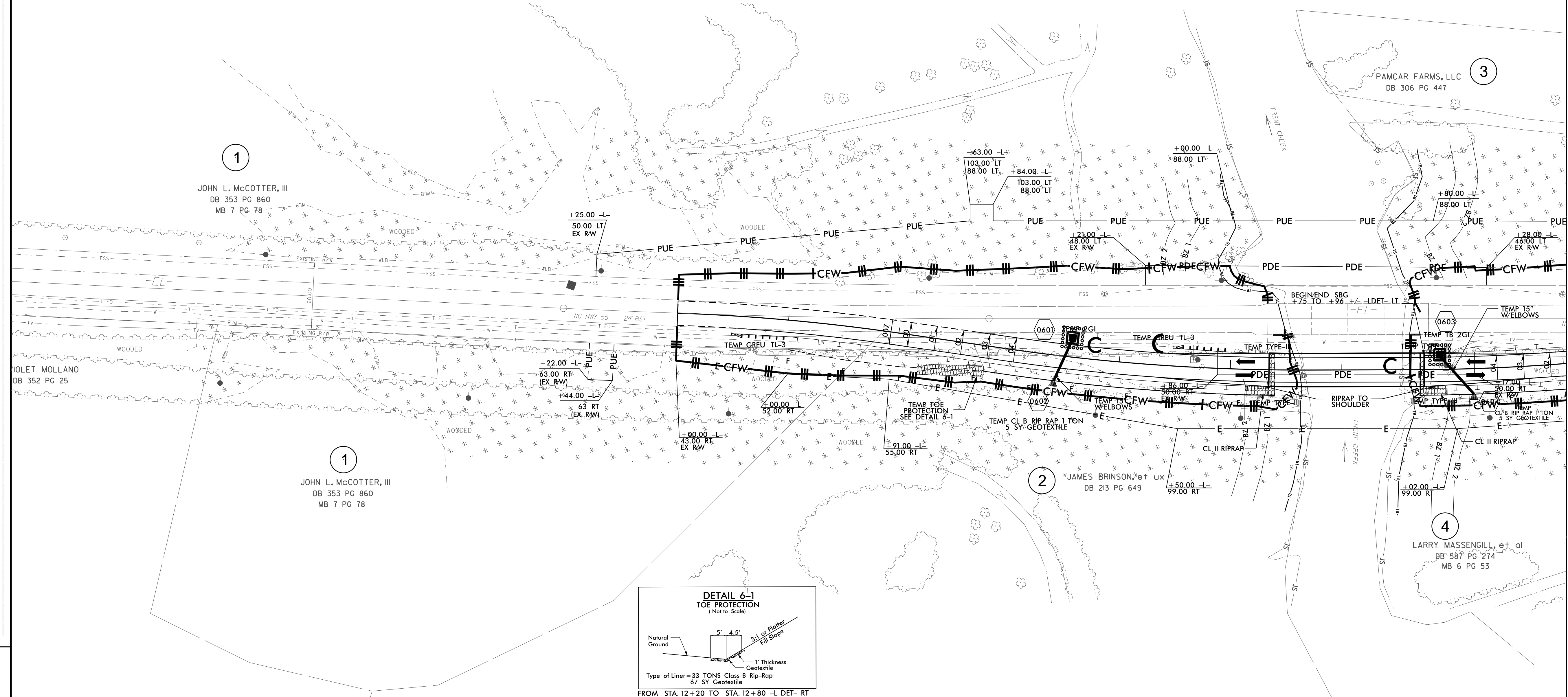
PROJECT REFERENCE NO. B-4593	SHEET NO. EC-6/CONST. 6
R/W SHEET NO.	
ROADWAY DESIGN ENGINEER	HYDRAULICS ENGINEER

- NOTE: UTILIZE FLOATING TURBIDITY CURTAIN AS DIRECTED
- NOTE: UTILIZE COIR FIBER MATTING ADJACENT TO WETLANDS/ JURISDICTIONAL AREAS, AND AS DIRECTED
- NOTE: UTILIZE TEMPORARY SEDIMENT BASIN OR SPECIAL STILLING BASIN(S) AS STILLING BASIN WHERE APPLICABLE.
- INSTALL MATTING FOR EROSION CONTROL IN ALL PROPOSED DETAIL DITCHES.
- PLACE MATTING FOR EROSION CONTROL ON SLOPES ADJACENT TO PERMITTED WETLANDS AS WORK ALLOWS

**DETOUR**      **SITE 1**



REVISIONS



MATCHLINE -L- STA 19+00.00 (SEE SHEET 5)

8/17/99

11-APR-2019 08:30  
B-4593-EC-pah-EC6.dgn  
c:\work\11-19\11-19-11-19-11-19

PROJECT REFERENCE NO.		SHEET NO.	
B-4593		EC-7/CONST. 7	
R/W SHEET NO.			
ROADWAY DESIGN ENGINEER		HYDRAULICS ENGINEER	



**SITE 1**

PAMCAR FARMS, LLC  
DB 306 PG 447

JOHN L. McCOTTER, III  
DB 353 PG 860

PAMCAR FARMS, LLC  
DB 306 PG 447

3

**DETOUR**

PAMCAR FARMS, LLC  
DB 306 PG 447

LARRY MASSENGILL, et al  
DB 587 PG 274  
MB 6 PG 53

PROPOSED SHEET  
PILE WALL

LARRY MASSENGILL, et al  
DB 587 PG 274  
MB 6 PG 53

5

ANDREW M. BUEHL, JR., et al  
DB 518 PG 710

LARRY MASSENGILL, et al  
DB 587 PG 274  
MB 6 PG 53

PAMCAR FARMS, LLC  
DB 306 PG 447

STEVEN LAVALLEE  
DB 337 PG 755  
DB 470 PG 147

**MATCHLINE -L- STA 19 + 00.00 (SEE SHEET 5)**

REVISIONS

PLACE MATTING FOR EROSION CONTROL ON SLOPES ADJACENT TO PERMITTED WETLANDS AS WORK ALLOWS

INSTALL MATTING FOR EROSION CONTROL IN ALL PROPOSED DETAIL DITCHES.

NOTE: UTILIZE FLOATING TURBIDITY CURTAIN AS DIRECTED

NOTE: UTILIZE COIR FIBER MATTING ADJACENT TO WETLANDS/ JURISDICTIONAL AREAS, AND AS DIRECTED

NOTE: UTILIZE TEMPORARY SEDIMENT BASIN OR SPECIAL STILLING BASIN(S) AS STILLING BASIN WHERE APPLICABLE.

8/17/99

11-APR-2019 08:30  
B-4593-EC-pah-EC7.dgn  
c:\work\11-11-19\11-11-19.dwg



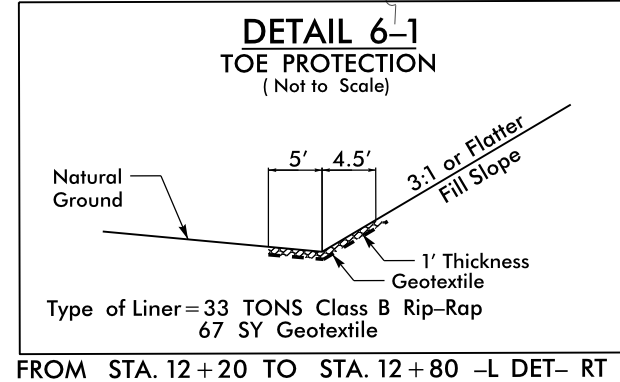
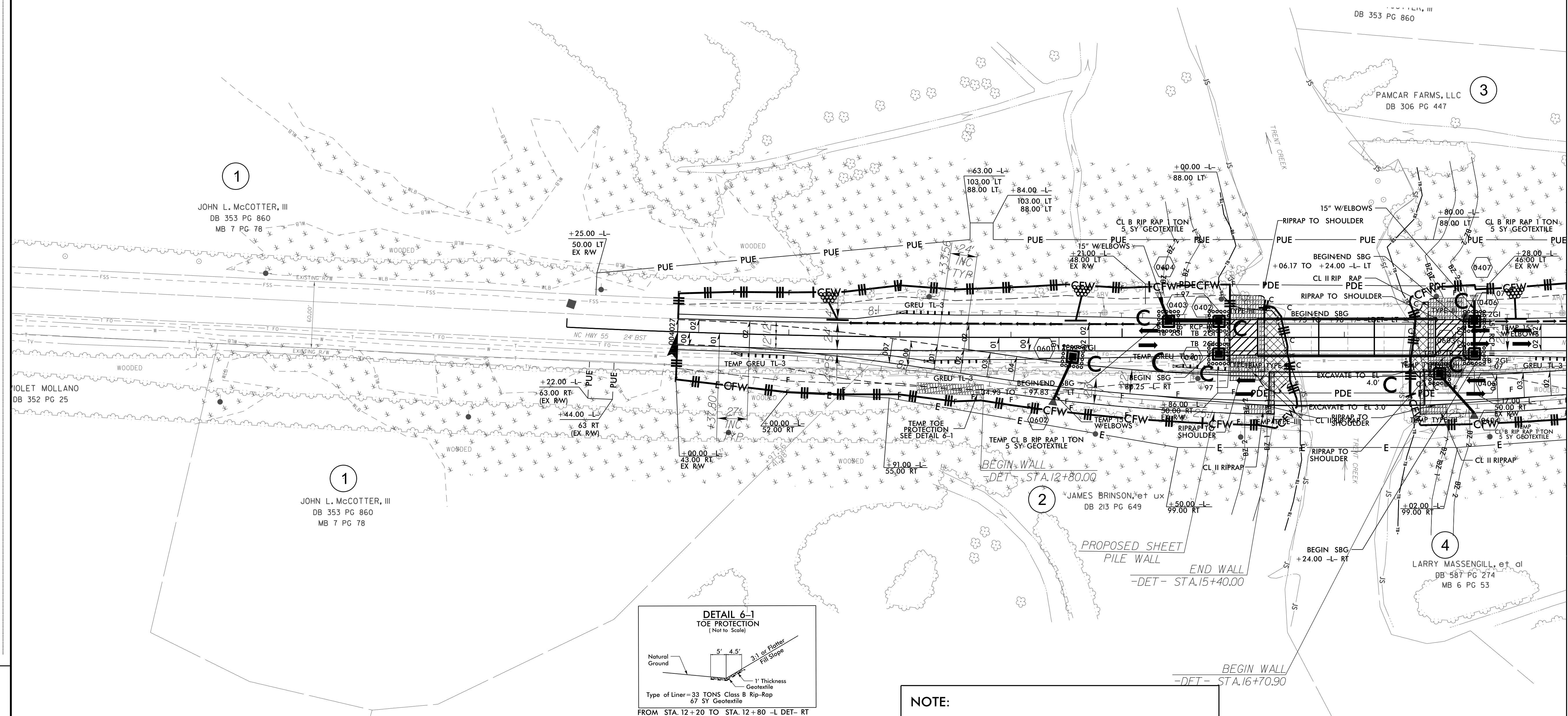
PROJECT REFERENCE NO.	SHEET NO.
B-4593	EC-B/CONST. 4
R/W SHEET NO.	
ROADWAY DESIGN ENGINEER	HYDRAULICS ENGINEER

# SITE 1



- NOTE: UTILIZE FLOATING TURBIDITY CURTAIN AS DIRECTED
- NOTE: UTILIZE COIR FIBER MATTING ADJACENT TO WETLANDS/ JURISDICTIONAL AREAS, AND AS DIRECTED
- NOTE: UTILIZE TEMPORARY SEDIMENT BASIN OR SPECIAL STILLING BASIN(S) AS STILLING BASIN WHERE APPLICABLE.
- INSTALL MATTING FOR EROSION CONTROL IN ALL PROPOSED DETAIL DITCHES.
- PLACE MATTING FOR EROSION CONTROL ON SLOPES ADJACENT TO PERMITTED WETLANDS AS WORK ALLOWS

REVISIONS

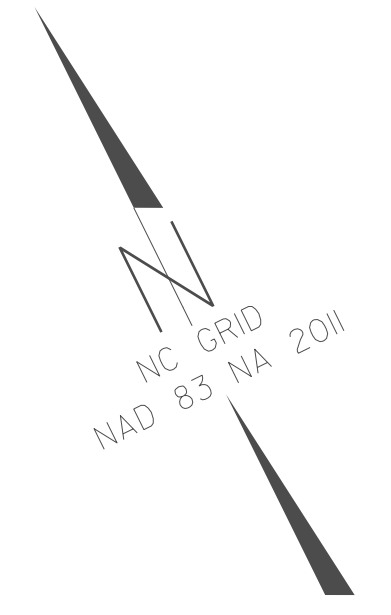


NOTE: THIS SHEET INCLUDES EROSION CONTROL FOR THE DECONSTRUCTION OF THE DETOUR BRIDGE

MATCHLINE -L- STA 19+00.00 (SEE SHEET 5)

8/17/99  
 I:\APR-2019\_08:30  
 B-4593\_EC\_pah\_EC6.dgn  
 acattk\bar\att

PROJECT REFERENCE NO. B-4593	SHEET NO. EC-9/CONST. 5
R/W SHEET NO.	
ROADWAY DESIGN ENGINEER	HYDRAULICS ENGINEER



PLACE MATTING FOR EROSION CONTROL ON SLOPES ADJACENT TO PERMITTED WETLANDS AS WORK ALLOWS

INSTALL MATTING FOR EROSION CONTROL IN ALL PROPOSED DETAIL DITCHES.

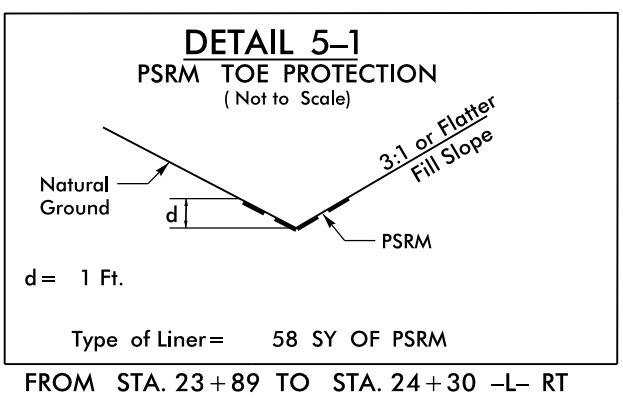
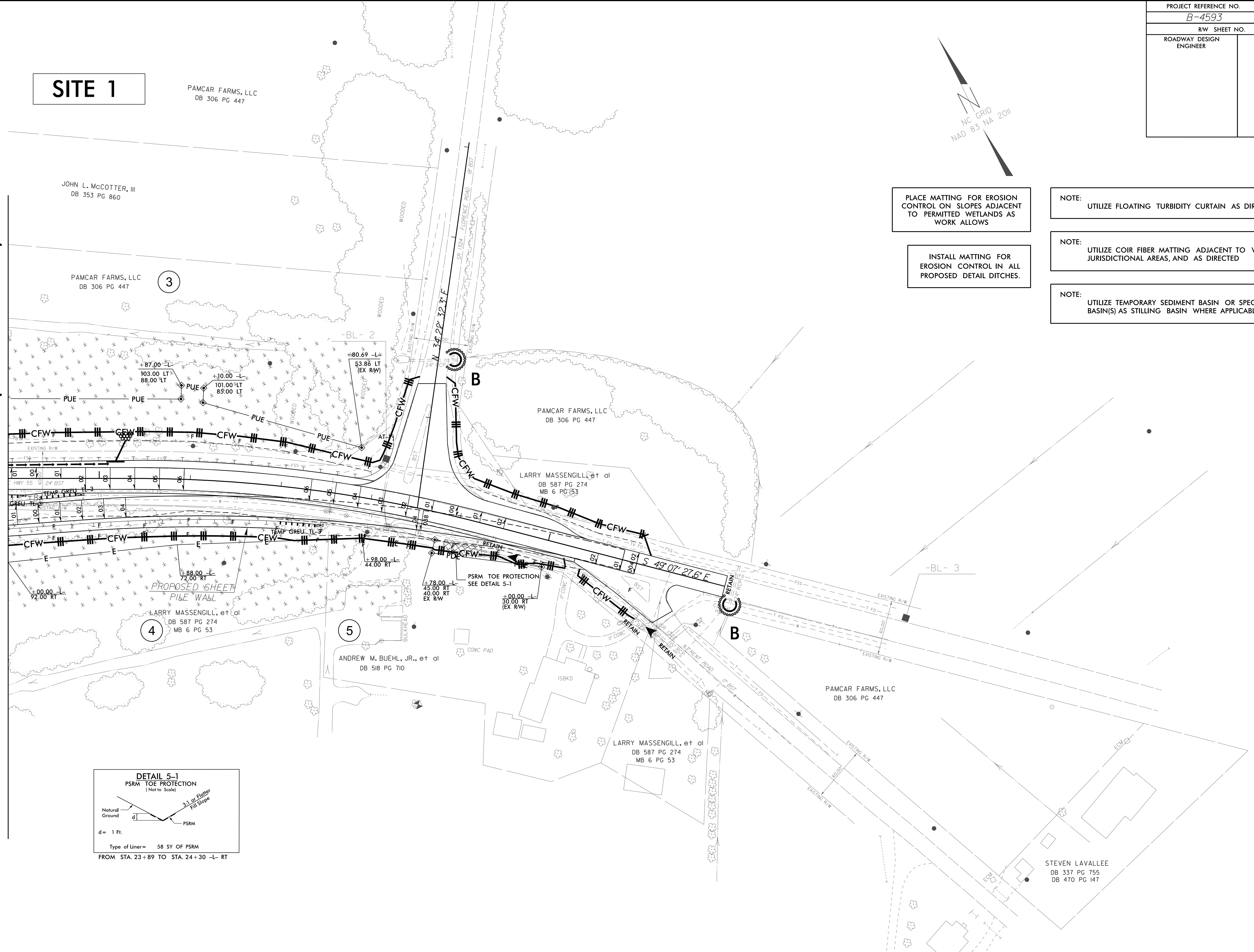
NOTE: UTILIZE FLOATING TURBIDITY CURTAIN AS DIRECTED

NOTE: UTILIZE COIR FIBER MATTING ADJACENT TO WETLANDS/ JURISDICTIONAL AREAS, AND AS DIRECTED

NOTE: UTILIZE TEMPORARY SEDIMENT BASIN OR SPECIAL STILLING BASIN(S) AS STILLING BASIN WHERE APPLICABLE.

MATCHLINE -L- STA 19+00.00 (SEE SHEET 5)

REVISIONS



8/17/99

I:\APR-2019\_08:30\_B-4593\_EC\_pah\_EC9.dgn  
c:\work\19\190817\190817.dwg