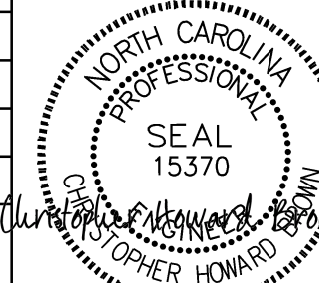

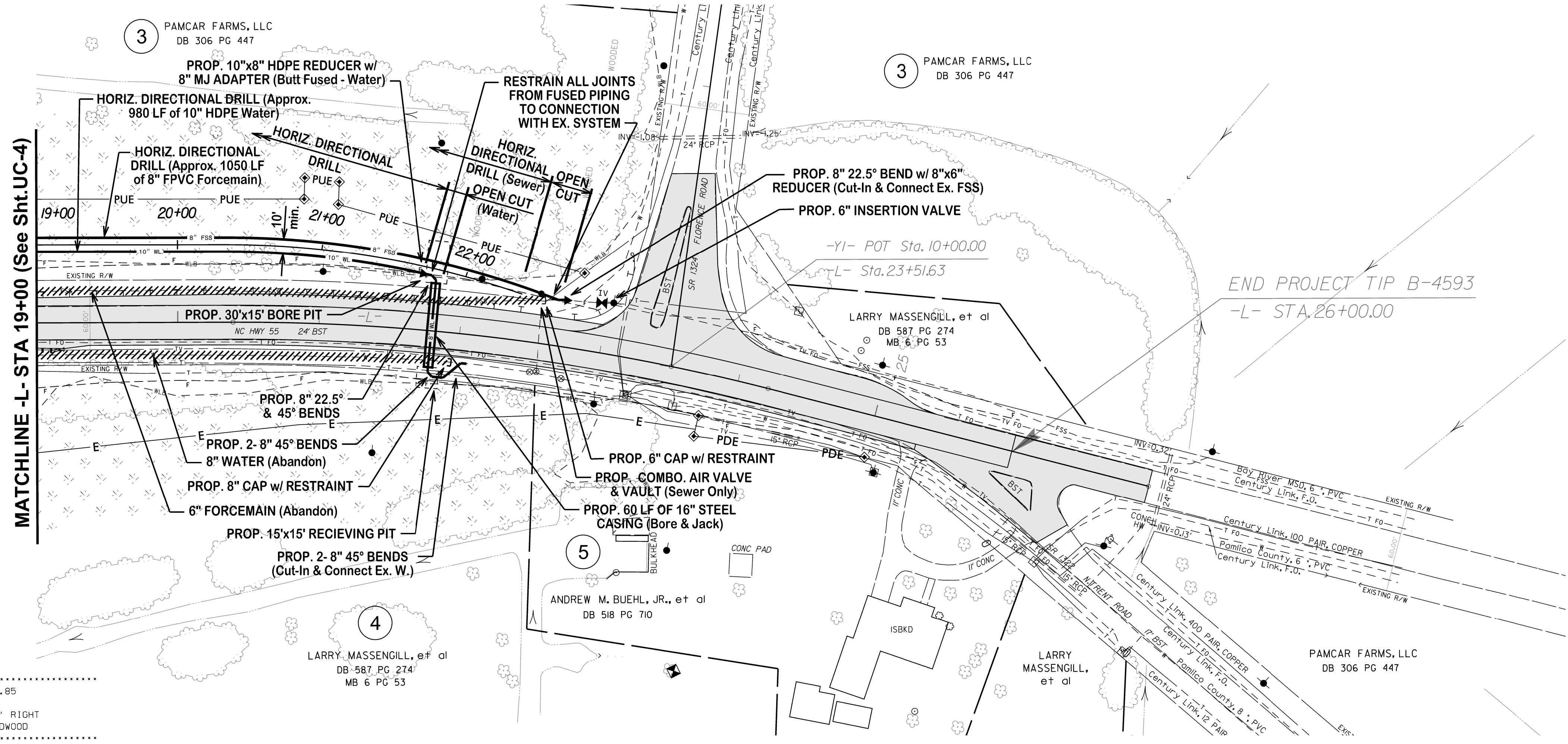


SITE UTILITY SHEET B-4593

PROJECT REFERENCE NO.	B-4593	SHEET NO.	UC-5
DESIGNED BY:	JV		
DRAWN BY:	CB		
CHECKED BY:	CB		
APPROVED BY:	JV		
REVISED:			HDR Engineering, Inc. of the Carolinas 555 Fayetteville St., Suite 900 Raleigh, NC 27601 (919) 232-6600
		7/24/2019	



BM1 ELEVATION = 5.85
 N 50°25' E 2682858
 BL STATION 31+46.00 248' RIGHT
 RR SPIKE SET IN 20' HARDWOOD

SCALE: 1"=5' Vert.
 1"=50' Horiz.

REVISIONS

DATUM										DATUM
10										10
5										5
0										0
-5										-5
-10										-10
-15										-15
-20										-20

PAY ITEM SCHEDULE

Pay Item No.	Pay Item	QTY	Pay Unit	Section No./ Special Provision (SP)	Section/Provision Title
	8" Water Line	275	LF	1510	Water Lines
	10" Water Line	980	LF	1510	Water Lines
	Ductile Iron Water Pipe Fittings	925	LB	1510	Water Lines
	6" Insertion Valve	2	EA	SP	
	8" Insertion Valve	1	EA	SP	
	Combo 2" Air Release Valve with Vault	2	EA	SP	
	8" Force Main Sewer	1240	LF	1520	Sanitary Sewer
	Ductile Iron Sewer Pipe Fittings	330	LB	1520	Sanitary Sewer
	Abandon 8" Utility Pipe	1120	LF	1530	Abandon or Remove Utilities
	Abandon 6" Utility Pipe	1180	LF	1530	Abandon or Remove Utilities
	16" Encasement Pipe	100	LF	1540	Encasement
	Bore and Jack of 16"	100	LF	1550	Trenchless Installation of Utilities
	Directional Drilling of 10"	980	LF	1550	Trenchless Installation of Utilities
	Directional Drilling of 8"	1050	LF	1550	Trenchless Installation of Utilities

7/24/2019 11:45:33 ut_rdy5_UC005_psh.dgn