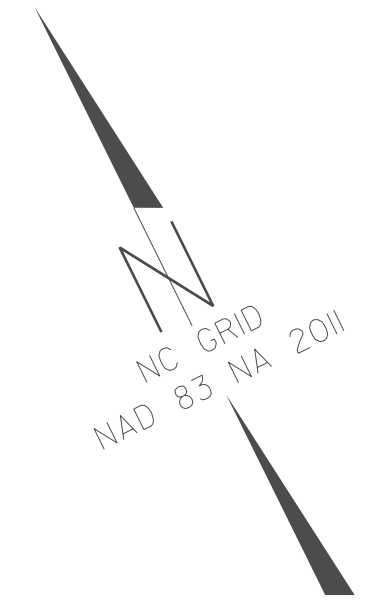


PROJECT REFERENCE NO. B-4593	SHEET NO. EC-9/CONST. 5
R/W SHEET NO.	
ROADWAY DESIGN ENGINEER	HYDRAULICS ENGINEER



PLACE MATTING FOR EROSION CONTROL ON SLOPES ADJACENT TO PERMITTED WETLANDS AS WORK ALLOWS

INSTALL MATTING FOR EROSION CONTROL IN ALL PROPOSED DETAIL DITCHES.

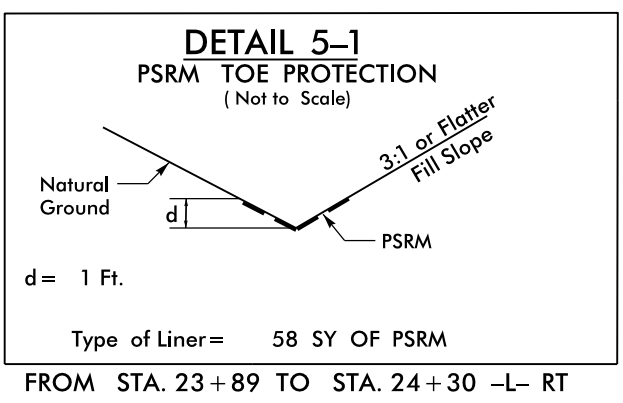
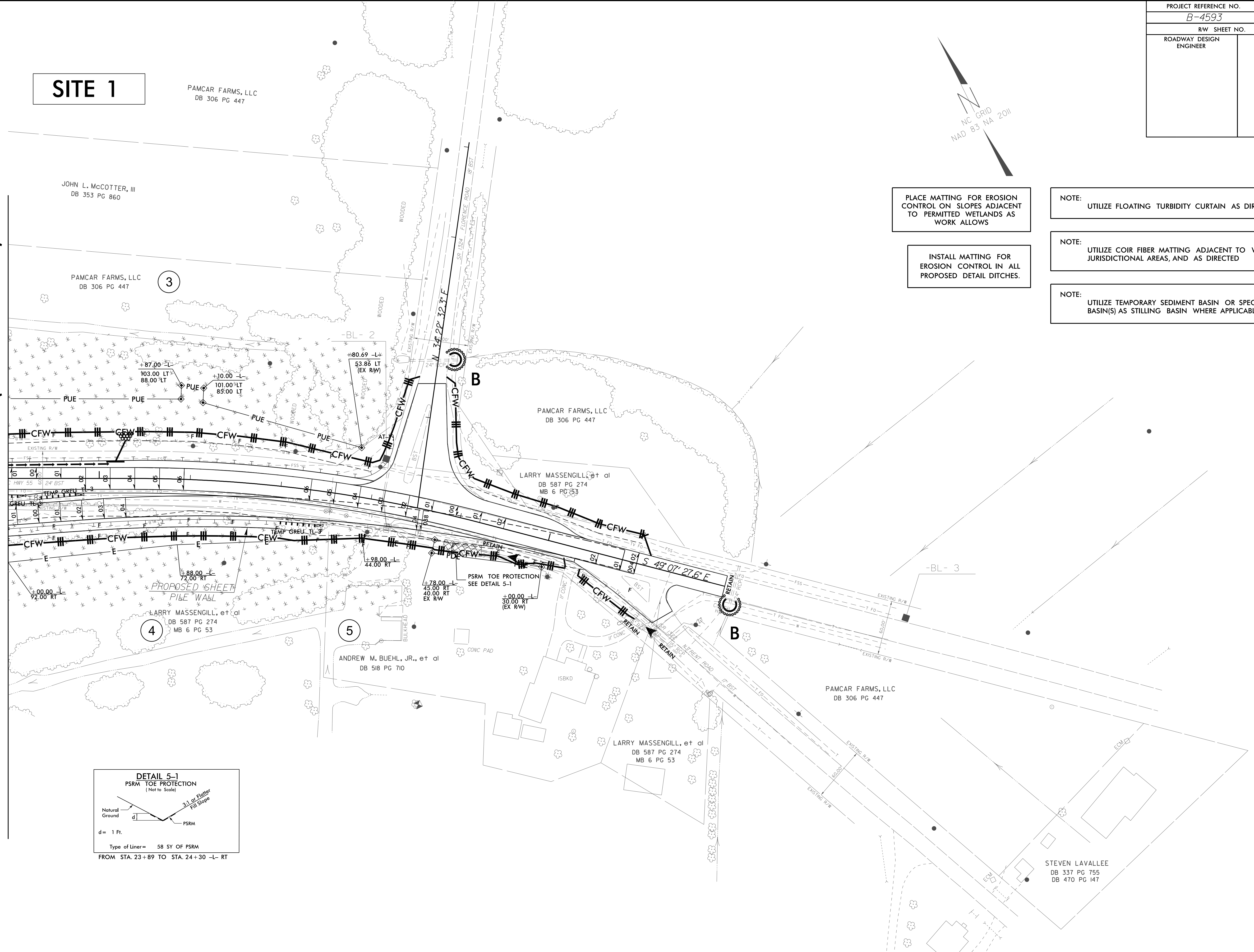
NOTE: UTILIZE FLOATING TURBIDITY CURTAIN AS DIRECTED

NOTE: UTILIZE COIR FIBER MATTING ADJACENT TO WETLANDS/ JURISDICTIONAL AREAS, AND AS DIRECTED

NOTE: UTILIZE TEMPORARY SEDIMENT BASIN OR SPECIAL STILLING BASIN(S) AS STILLING BASIN WHERE APPLICABLE.

MATCHLINE -L- STA 19+00.00 (SEE SHEET 5)

REVISIONS



8/17/99

11-APR-2019 08:30  
B-4593-EC-pah-EC9.dgn  
c:\work\11-11-19\11-11-19.dwg