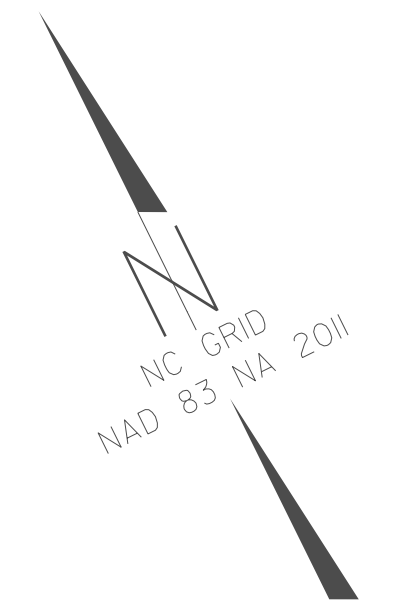


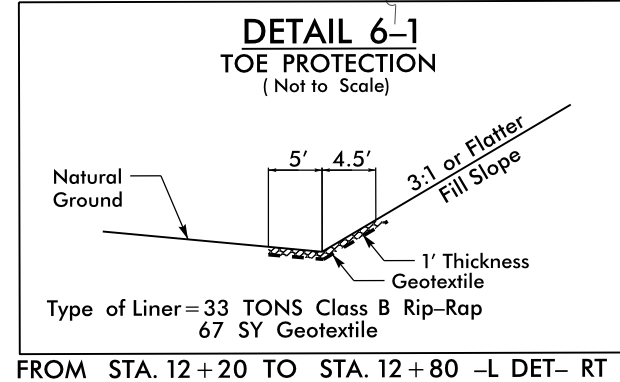
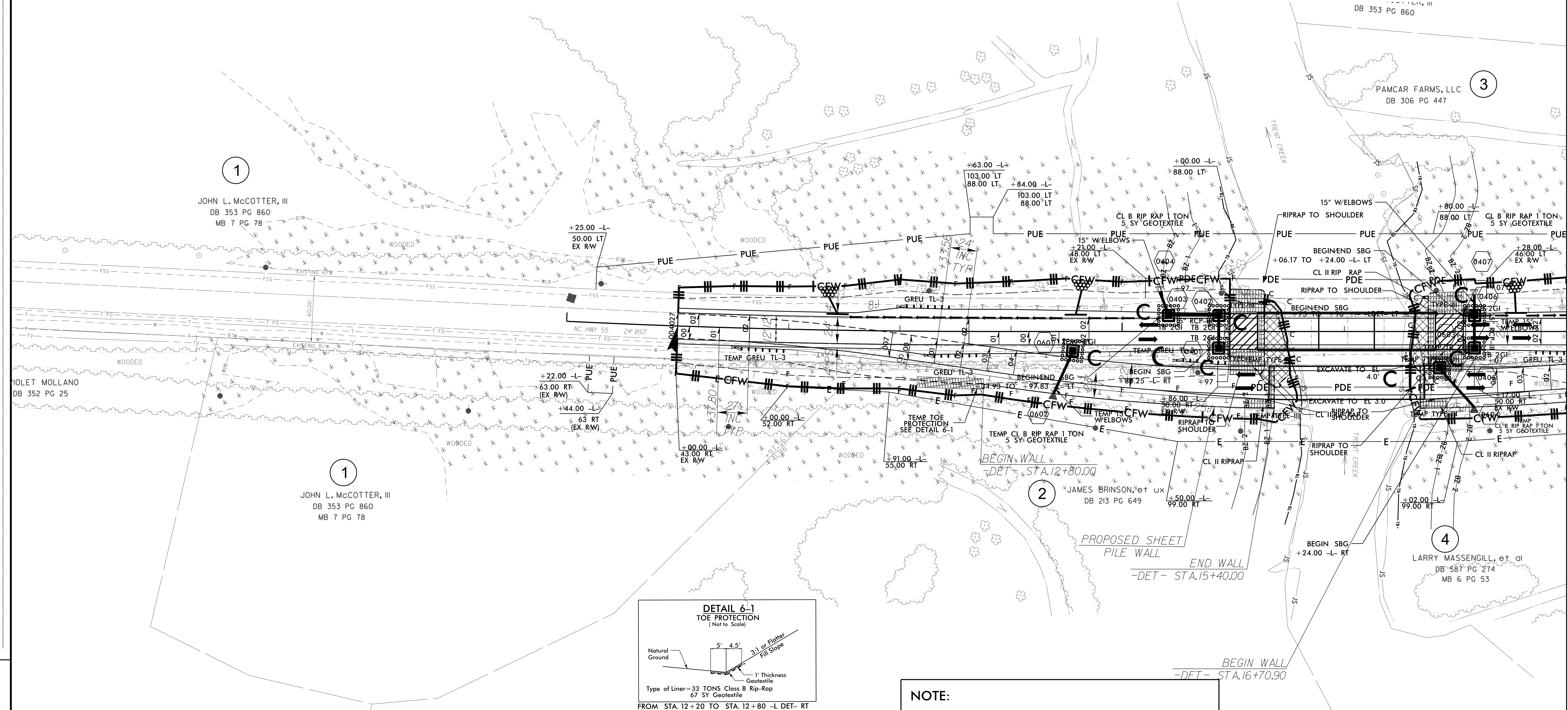
PROJECT REFERENCE NO. B-4593	SHEET NO. EC-B/CONST. 4
R/W SHEET NO.	
ROADWAY DESIGN ENGINEER	HYDRAULICS ENGINEER

SITE 1



- NOTE: UTILIZE FLOATING TURBIDITY CURTAIN AS DIRECTED
- NOTE: UTILIZE COIR FIBER MATTING ADJACENT TO WETLANDS/ JURISDICTIONAL AREAS, AND AS DIRECTED
- NOTE: UTILIZE TEMPORARY SEDIMENT BASIN OR SPECIAL STILLING BASIN(S) AS STILLING BASIN WHERE APPLICABLE.
- INSTALL MATTING FOR EROSION CONTROL IN ALL PROPOSED DETAIL DITCHES.
- PLACE MATTING FOR EROSION CONTROL ON SLOPES ADJACENT TO PERMITTED WETLANDS AS WORK ALLOWS

REVISIONS



NOTE: THIS SHEET INCLUDES EROSION CONTROL FOR THE DECONSTRUCTION OF THE DETOUR BRIDGE

MATCHLINE -L- STA 19+00.00 (SEE SHEET 5)

8/17/99
 I:\APR-2019_08:30
 B-4593_EC_pah_EC6.dgn
 acattak@att.net