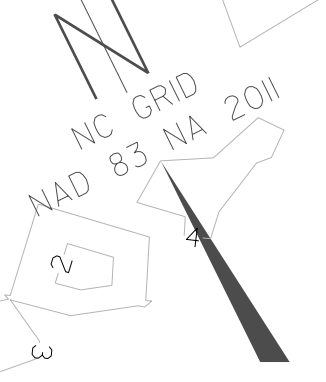


8/17/99

PROJECT REFERENCE NO. B-4593	SHEET NO. EC-5/CONST. 5
R/W SHEET NO.	
ROADWAY DESIGN ENGINEER	HYDRAULICS ENGINEER

CLEARING AND GRUBBING
EROSION CONTROL FOR
CONSTRUCTION SHEET 5



NOTE: UTILIZE FLOATING TURBIDITY CURTAIN AS DIRECTED

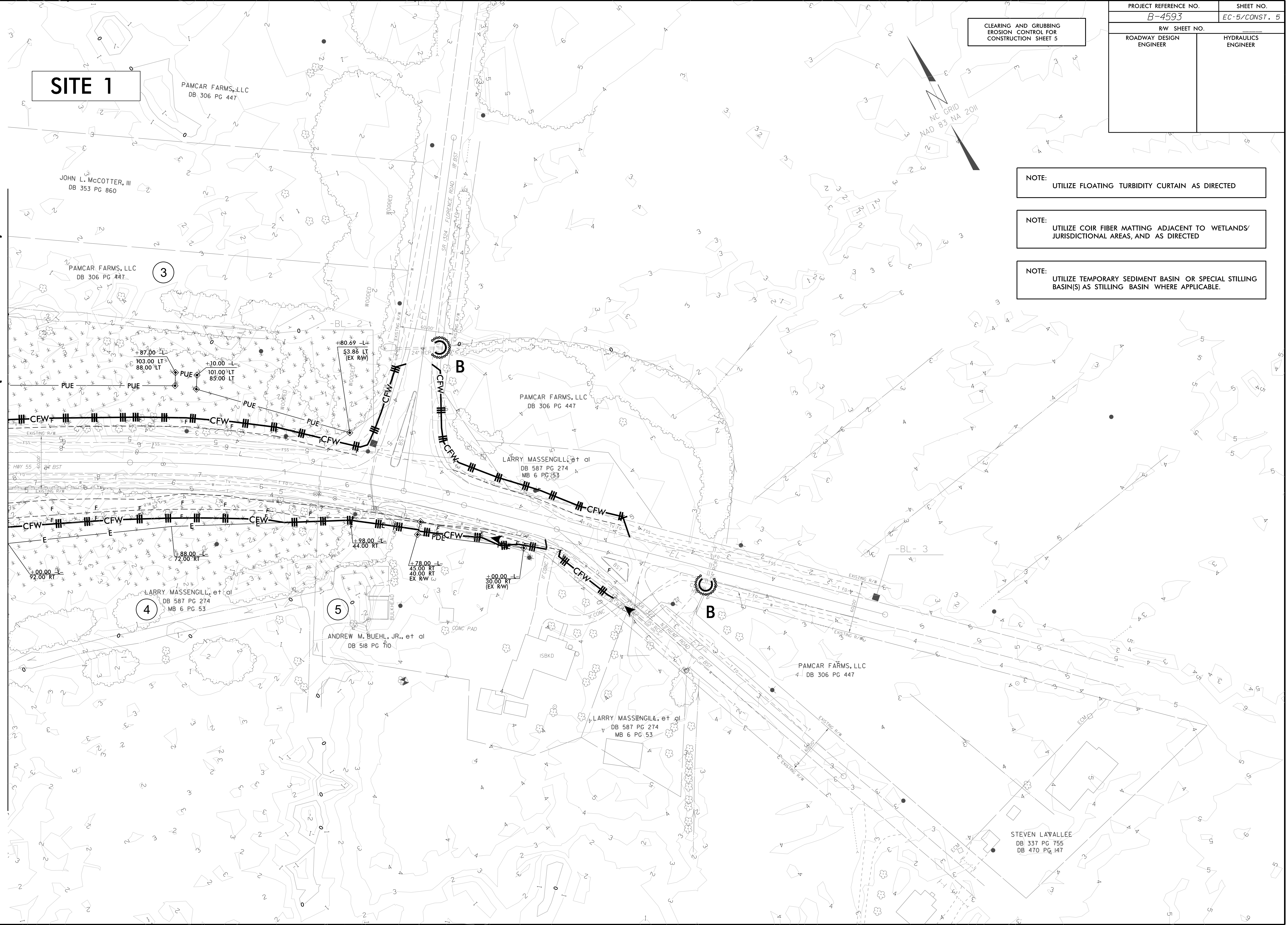
NOTE: UTILIZE COIR FIBER MATTING ADJACENT TO WETLANDS/ JURISDICTIONAL AREAS, AND AS DIRECTED

NOTE: UTILIZE TEMPORARY SEDIMENT BASIN OR SPECIAL STILLING BASIN(S) AS STILLING BASIN WHERE APPLICABLE.

SITE 1

MATCHLINE -L- STA 19+00.00 (SEE SHEET 5)

REVISIONS



11-APR-2019 08:30
B-4593_EC_pah.ec5.dgn
arackab