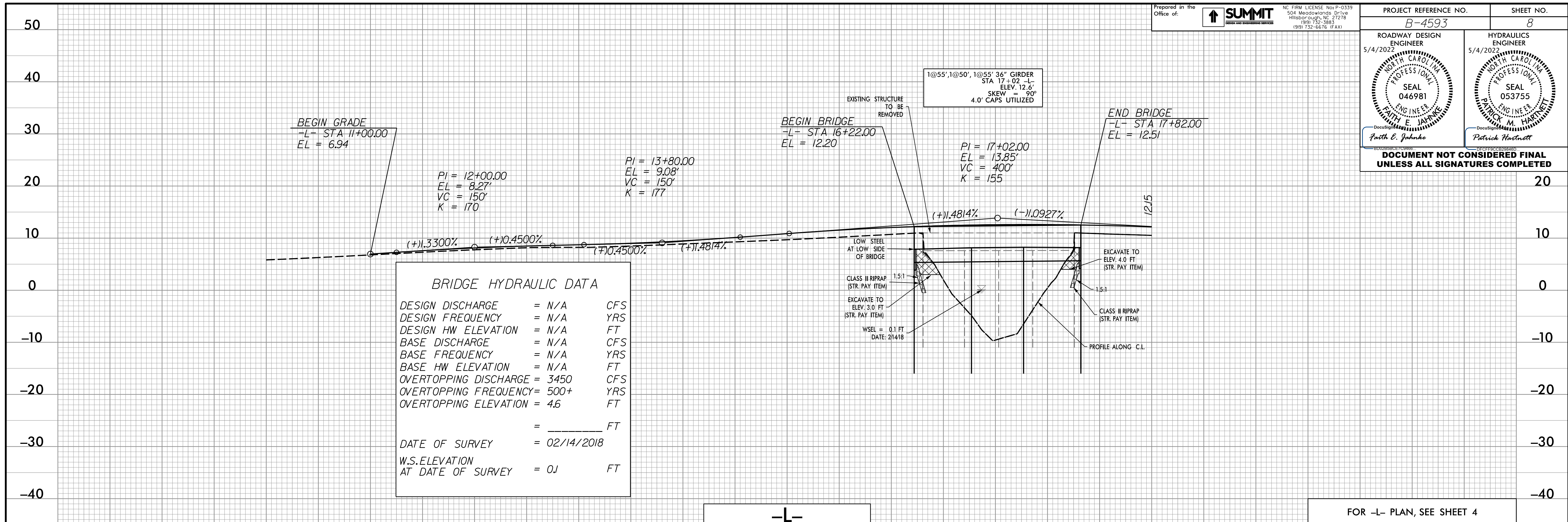
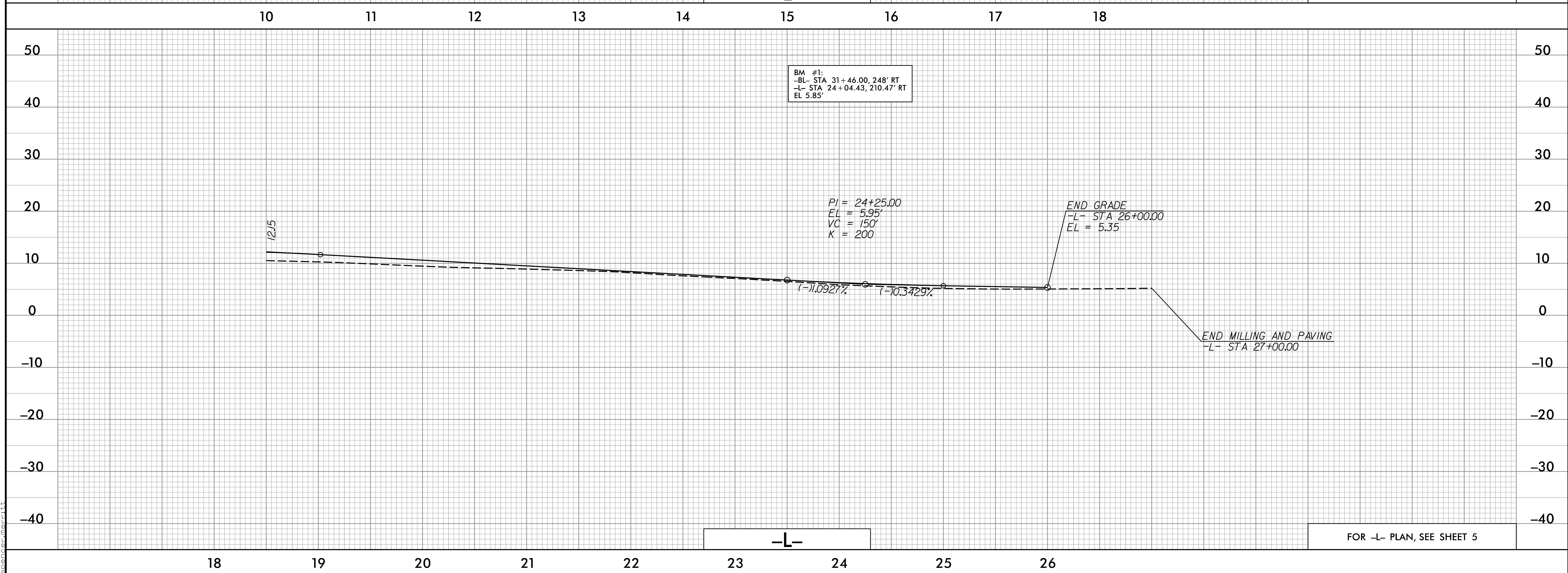


PROJECT REFERENCE NO. B-4593		SHEET NO. 8
ROADWAY DESIGN ENGINEER 5/4/2022 PAUL E. JAHNKE SEAL 046981 NORTH CAROLINA PROFESSIONAL ENGINEER	HYDRAULICS ENGINEER 5/4/2022 PATRICK M. HARTNETT SEAL 053755 NORTH CAROLINA PROFESSIONAL ENGINEER	
DOCUMENT NOT CONSIDERED FINAL UNLESS ALL SIGNATURES COMPLETED		



BRIDGE HYDRAULIC DATA		
DESIGN DISCHARGE	= N/A	CFS
DESIGN FREQUENCY	= N/A	YRS
DESIGN HW ELEVATION	= N/A	FT
BASE DISCHARGE	= N/A	CFS
BASE FREQUENCY	= N/A	YRS
BASE HW ELEVATION	= N/A	FT
OVERTOPPING DISCHARGE	= 3450	CFS
OVERTOPPING FREQUENCY	= 500+	YRS
OVERTOPPING ELEVATION	= 4.6	FT
	= _____	FT
DATE OF SURVEY	= 02/14/2018	
W.S. ELEVATION AT DATE OF SURVEY	= 0J	FT

FOR -L- PLAN, SEE SHEET 4



FOR -L- PLAN, SEE SHEET 5

04 MAY 2022 08:24
B:\15\13_Roads\11-8.dgn
spencer.miller