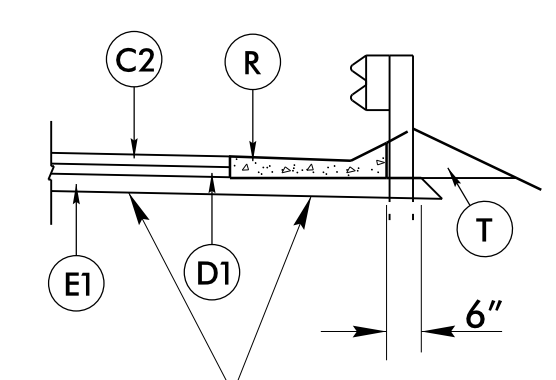


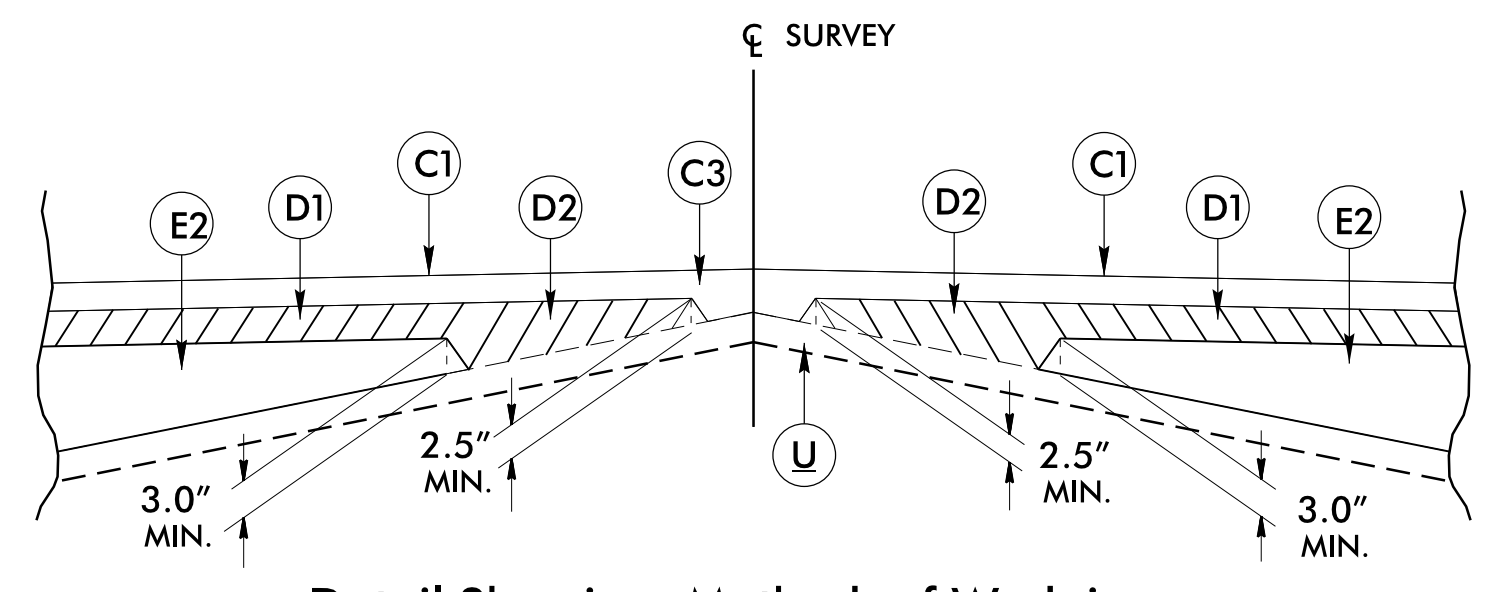
6/2/2019

PAVEMENT SCHEDULE (FINAL)	
C1	PROP. APPROX. 1½" ASPHALT CONCRETE SURFACE COURSE, TYPE S9.5B, AT AN AVERAGE RATE OF 165 LBS. PER SQ. YD.
C2	PROP. APPROX. 3" ASPHALT CONCRETE SURFACE COURSE, TYPE S9.5B, AT AN AVERAGE RATE OF 165 LBS. PER SQ. YD. IN EACH OF TWO LAYERS.
C3	PROP. VAR. DEPTH ASPHALT CONCRETE SURFACE COURSE, TYPE S9.5B, AT AN AVERAGE RATE OF 110 LBS. PER SQ. YD. PER 1" DEPTH. TO BE PLACED IN LAYERS NOT TO EXCEED 1½" IN DEPTH.
D1	PROP. APPROX. 2½" ASPHALT CONCRETE INTERMEDIATE COURSE, TYPE I19.0C, AT AN AVERAGE RATE OF 285 LBS. PER SQ. YD.
D2	PROP. VAR. DEPTH ASPHALT CONCRETE INTERMEDIATE COURSE, TYPE I19.0C, AT AN AVERAGE RATE OF 114 LBS. PER SQ. YD. PER 1" DEPTH. TO BE PLACED IN LAYERS NOT LESS THAN 2½" IN DEPTH OR GREATER THAN 4" IN DEPTH.
E1	PROP. APPROX. 4" ASPHALT CONCRETE BASE COURSE, TYPE B25.0C, AT AN AVERAGE RATE OF 456 LBS. PER SQ. YD.
E2	PROP. VAR. DEPTH ASPHALT CONCRETE BASE COURSE, TYPE B25.0C, AT AN AVERAGE RATE OF 114 LBS. PER SQ. YD. PER 1" DEPTH. TO BE PLACED IN LAYERS NOT LESS THAN 3" IN DEPTH OR GREATER THAN 5½" IN DEPTH.
J	PROP. 6" AGGREGATE BASE COURSE.
P	PRIME COAT AT THE RATE OF .35 GAL. PER SQ. YD.
R	SHOULDER BERM GUTTER
T	EARTH MATERIAL.
U	EXISTING PAVEMENT.
V	INCIDENTAL MILLING
W	VARIABLE DEPTH ASPHALT PAVEMENT (SEE STANDARD WEDGING DETAIL)

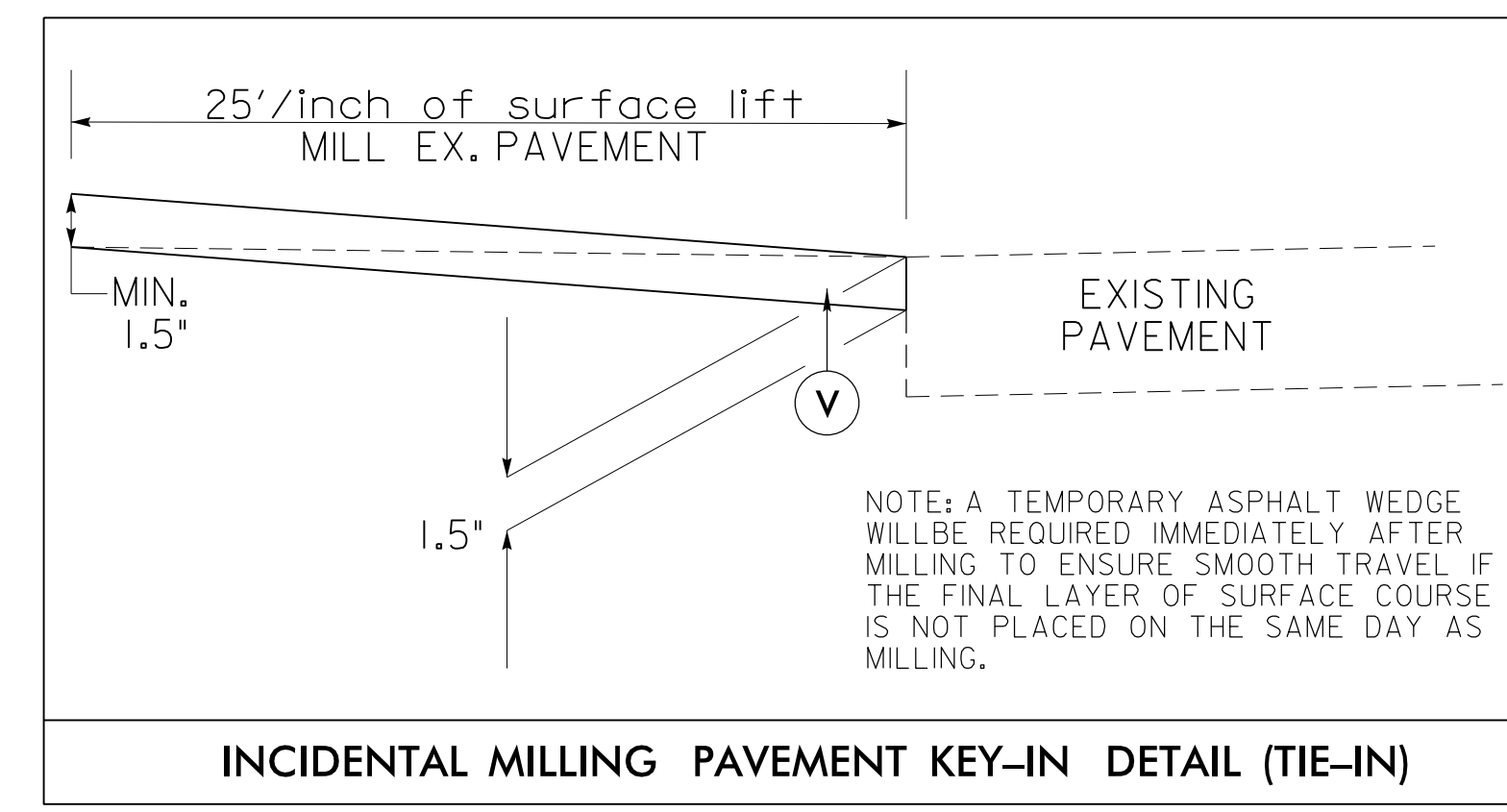
NOTE: PAVEMENT EDGE SLOPES ARE 1:1 UNLESS SHOWN OTHERWISE.



USE IN CONJUNCTION WITH TYPICAL SECTION #2
 -L- STA. 15+34.93 TO STA. 15+97.83 LT
 -L- STA. 15+80.25 TO STA. 15+97.83 RT
 -L- STA. 18+06.17 TO STA. 18+24.00 LT
 -L- STA. 18+06.17 TO STA. 18+24.00 RT

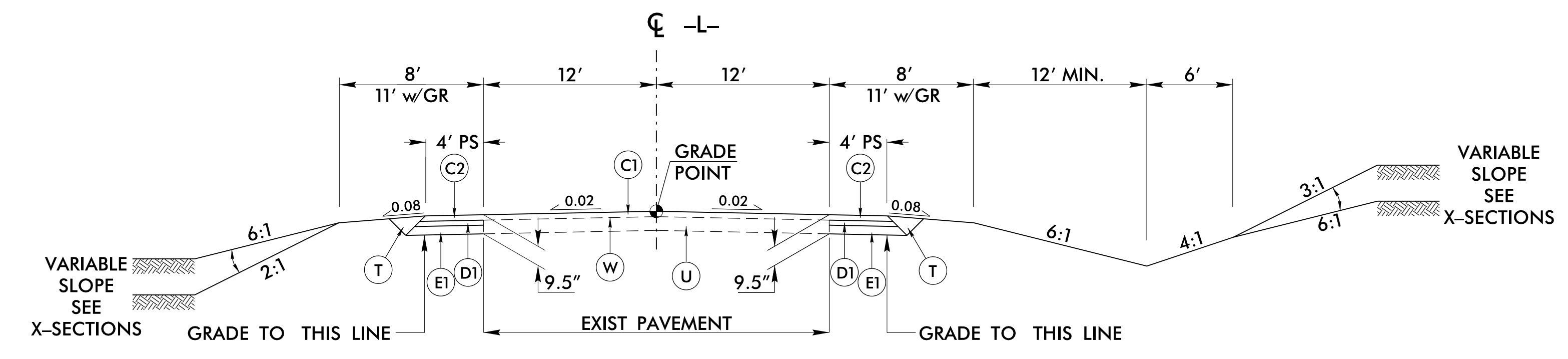


Detail Showing Method of Wedging



INCIDENTAL MILLING PAVEMENT KEY-IN DETAIL (TIE-IN)

-L- STA 11+00.00 TO 11+37.50
 -L- STA 26+62.50 TO 27+00.00
 STATION RANGES ARE APPROXIMATE ONLY.
 GRADE MAY BE ADJUSTED BY ENGINEER
 TO ENSURE A PROPER TIE-IN.

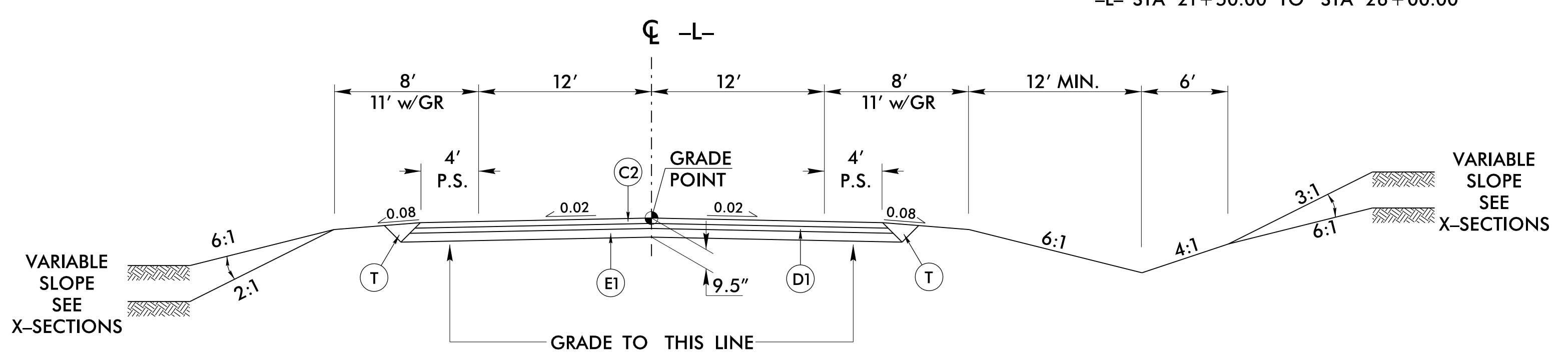


TYPICAL SECTION NO. 1

-L- (NC 55)

USE TYPICAL SECTION NO. 1

-L- STA 11+00.00 TO STA 14+50.00
 -L- STA 21+50.00 TO STA 26+00.00

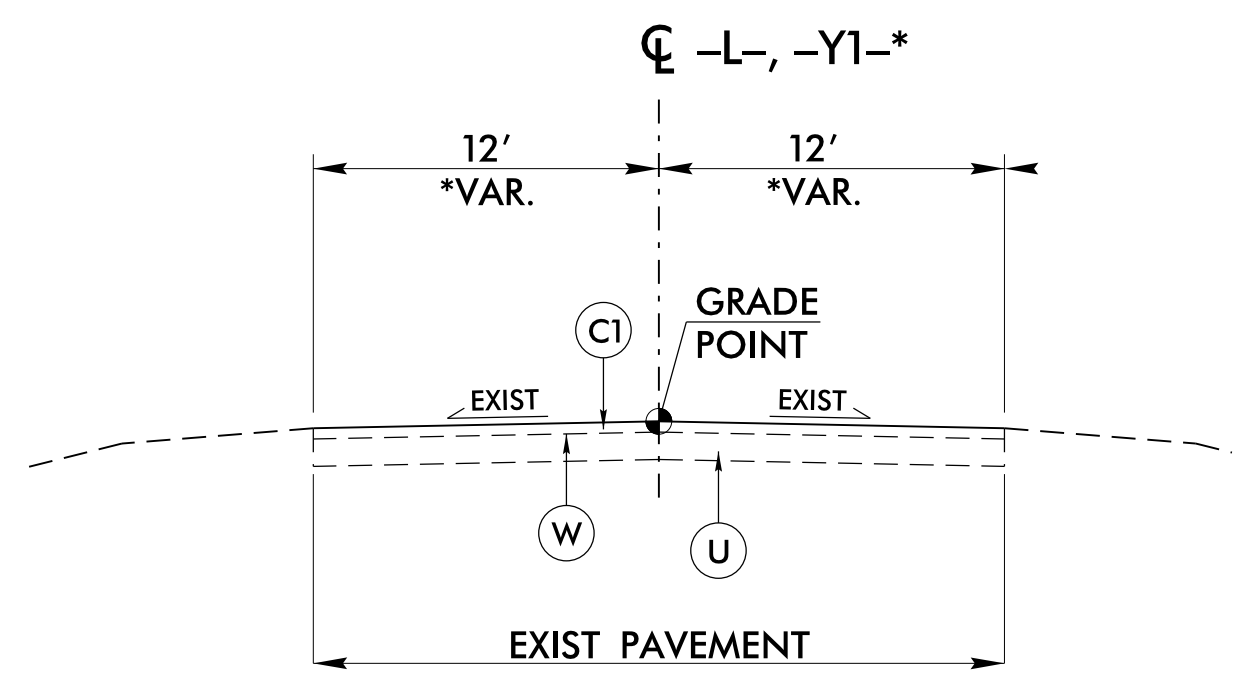


TYPICAL SECTION NO. 2

-L- (NC 55)

USE TYPICAL SECTION NO. 2

-L- STA 14+50.00 TO STA 16+22.00 (BEGIN BRIDGE)
 -L- STA 17+82.00 (END BRIDGE) TO STA 21+50.00



TYPICAL SECTION NO. 3

-L- (NC 55)
 -Y1- (SR 1324)

USE TYPICAL SECTION NO. 3

-L- STA 26+00.00 TO STA 27+00.00
 -Y1- STA 10+12.04 TO STA 11+37.94

PROJECT REFERENCE NO. B-4593	SHEET NO. 2A-1
ROADWAY DESIGN ENGINEER 5/4/2022 FAITH E. JAHNKE SEAL 046981 NORTH CAROLINA PROFESSIONAL ENGINEER	PAVEMENT DESIGN ENGINEER 5/4/2022 CLARK S. MORRISON SEAL 022896 NORTH CAROLINA PROFESSIONAL ENGINEER
DOCUMENT NOT CONSIDERED FINAL UNLESS ALL SIGNATURES COMPLETED	
Prepared in the Office of: SUMMIT	NC FIRM LICENSE No. P-0339 504 Meadowslands Drive Hillsborough, NC 27278 (919) 732-2883 (919) 732-6676 (FAX)

NOTE: PLACE FDPS TO FACE OF GUARDRAIL AS SHOWN ON PLANS.
 *FOR SLOPES VARYING FROM 3:1 TO 2:1, UTILIZE ROCK PLATING. NO SLOPES SHALL BE STEEPER THAN 2:1.

23 MAY 2019 15:23
 825331 R001_19.dgn
 Faith E. Jahnke