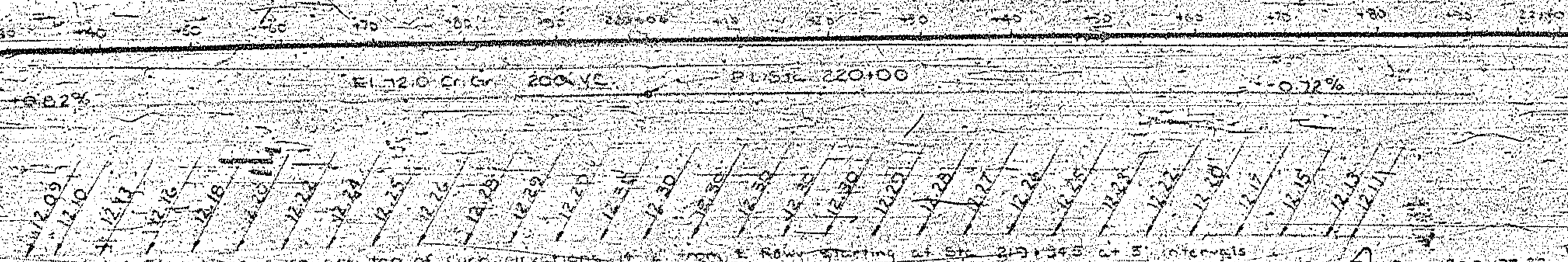


NO. ROAD DIST. NO.	STATE	PROJECT NO.
5	N.C.	8 12653



CAMBER DIAGRAM

NOTES

1. All work shall conform to the specifications for Highway Construction, 1957 Edition, as amended, and to the special provisions for this project.

2. The bridge shall be constructed of reinforced concrete and steel.

3. The bridge shall be constructed on existing piles.

4. The bridge shall be constructed on a minimum of 30' long piles.

5. The bridge shall be constructed on a minimum of 30' long piles.

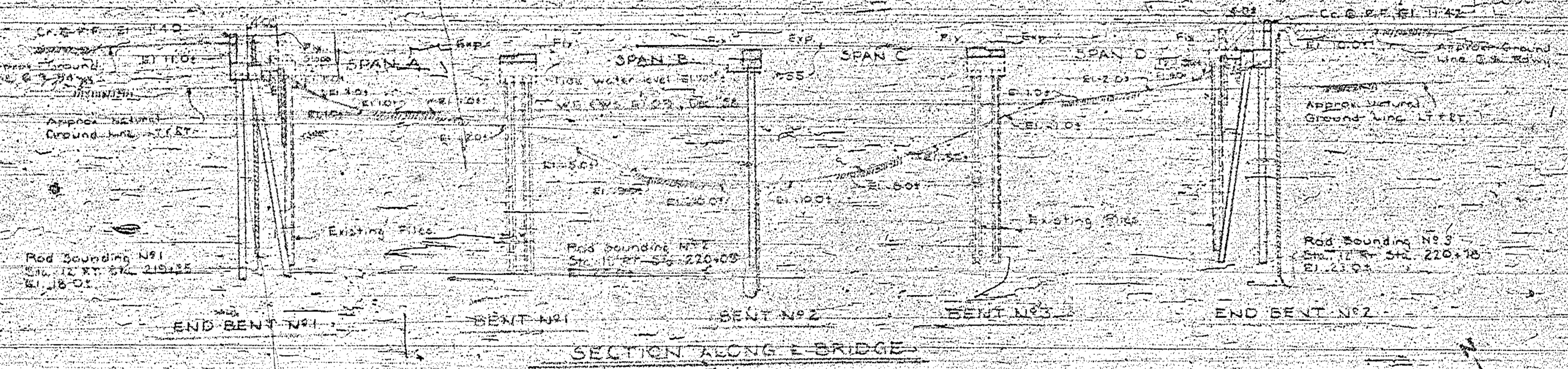
6. The bridge shall be constructed on a minimum of 30' long piles.

7. The bridge shall be constructed on a minimum of 30' long piles.

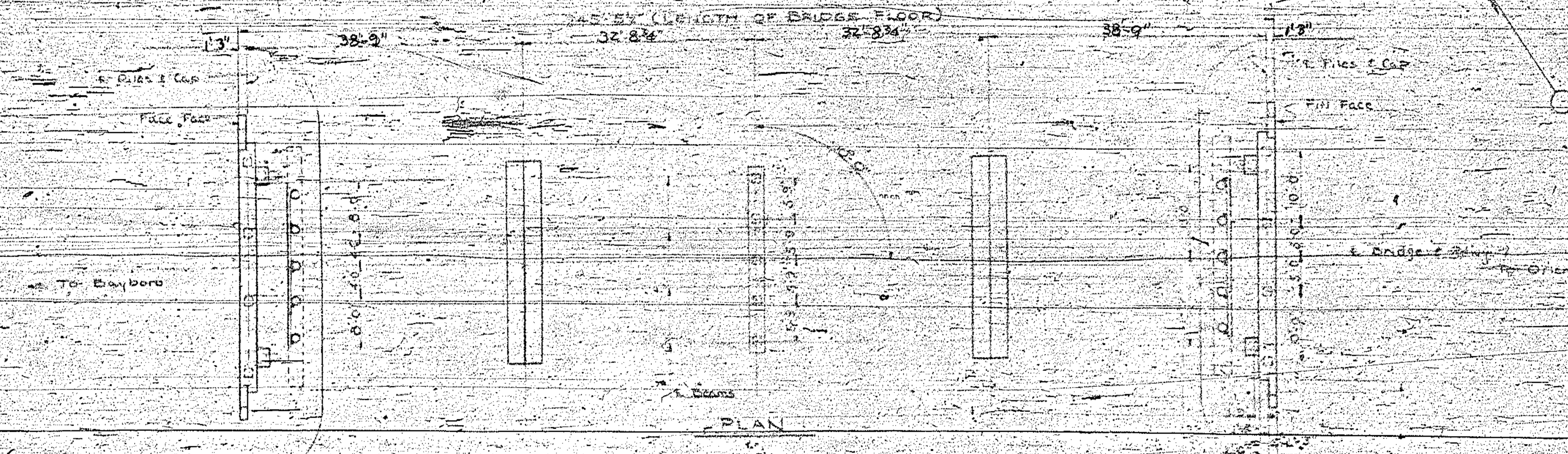
8. The bridge shall be constructed on a minimum of 30' long piles.

9. The bridge shall be constructed on a minimum of 30' long piles.

10. The bridge shall be constructed on a minimum of 30' long piles.

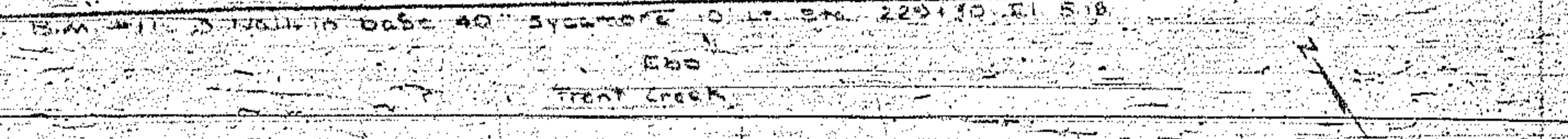


SECTION ALONG E BRIDGE



PLAN

LOCATION SKETCH



TOTAL BILL OF MATERIAL

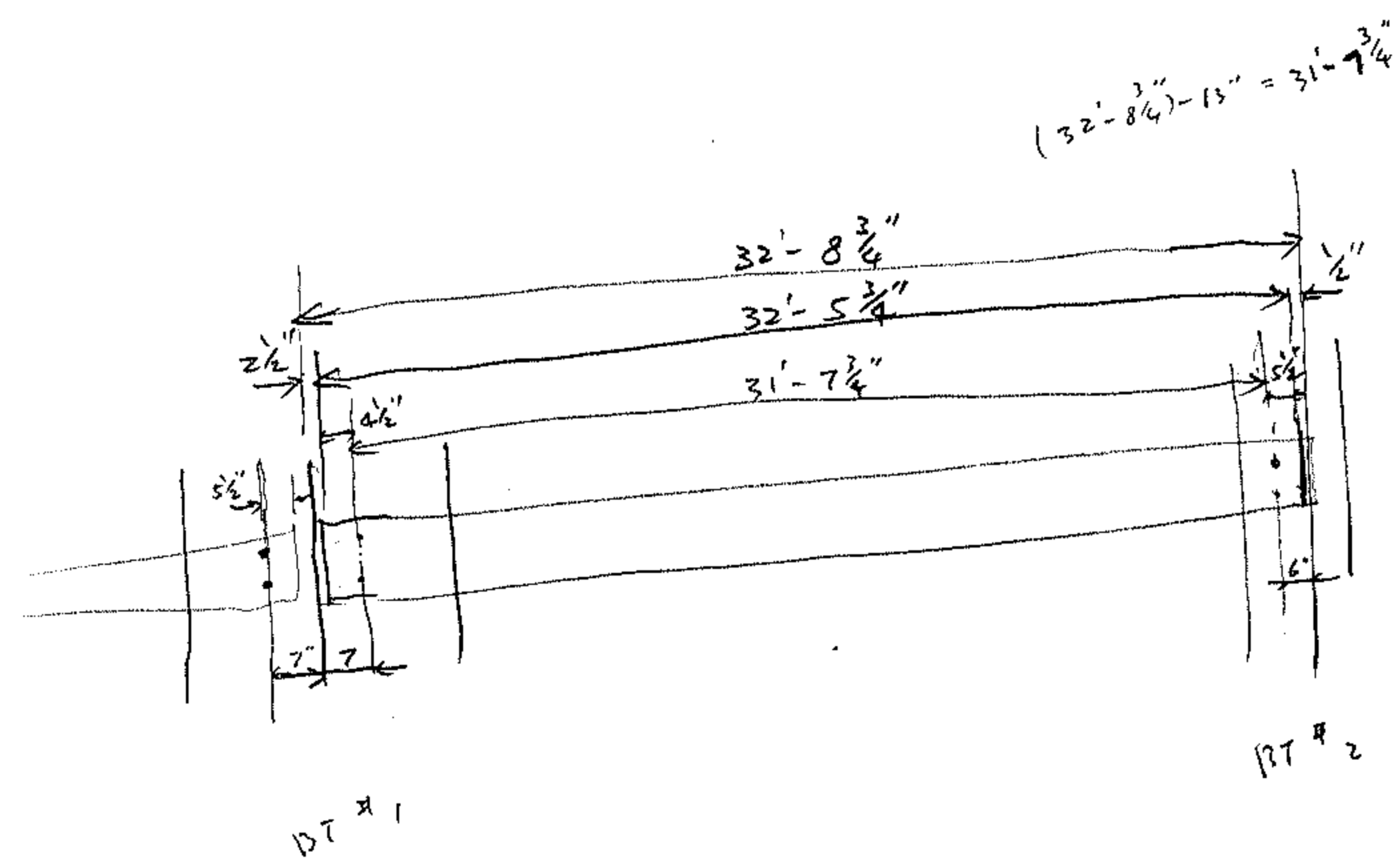
Item	Quantity	Unit	Price	Total
Concrete	100	cu yd	12.00	1200.00
Steel	100	lb	0.10	10.00
Timber	100	cu yd	1.00	100.00
Concrete Piles	100	cu yd	1.00	100.00
Steel Piles	100	lb	0.10	10.00
Timber Piles	100	cu yd	1.00	100.00
Approach Curbs	100	sq ft	0.10	10.00
Approach Girders	100	lb	0.10	10.00
Approach Piles	100	cu yd	1.00	100.00
Approach Filling	100	cu yd	1.00	100.00
Total				1520.00

PROJECT NO. 8 12653
 PAMUNO COUNTY
 STATION: 220+04.5

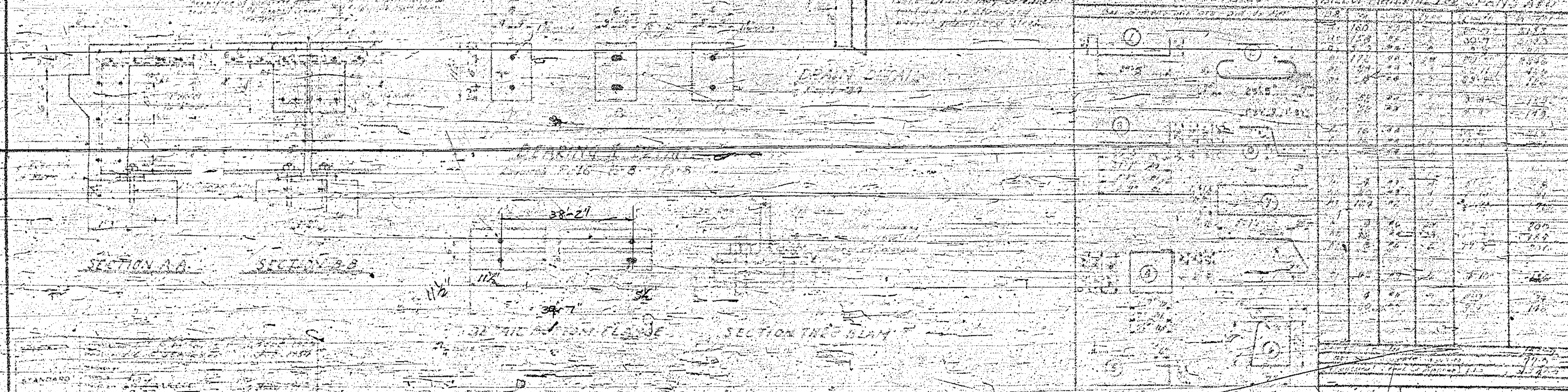
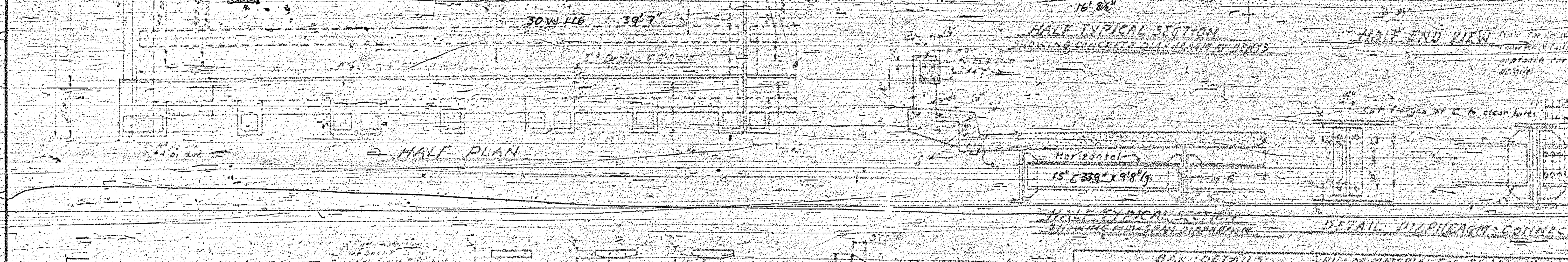
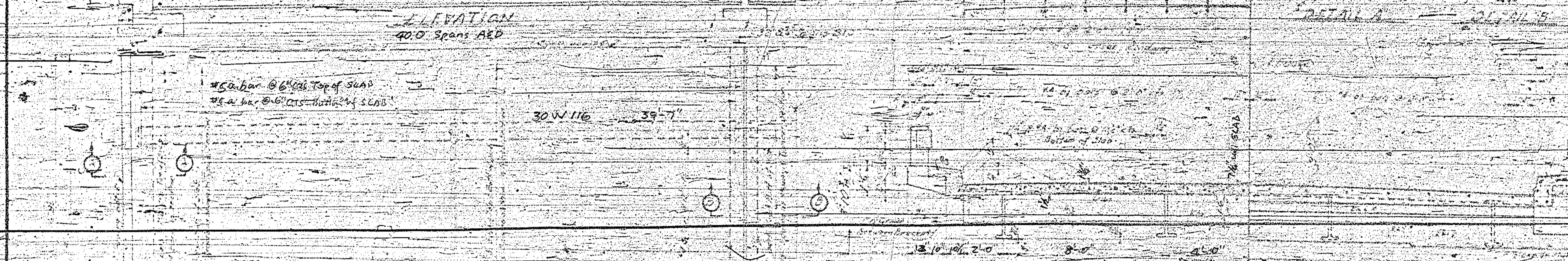
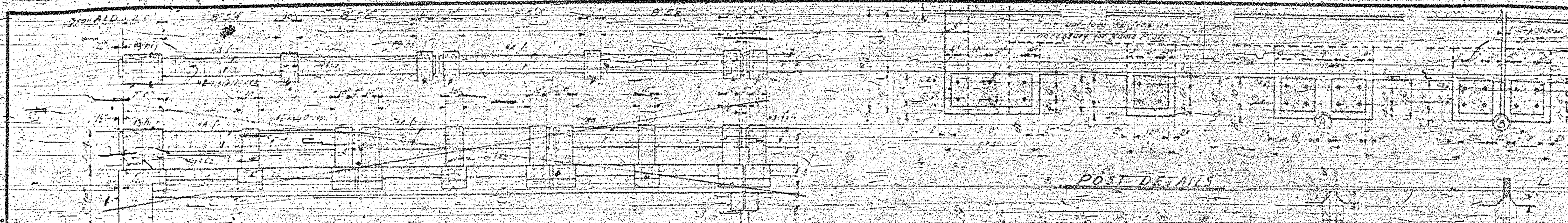
STATE OF NORTH CAROLINA
 STATE HIGHWAY COMMISSION
 GENERAL DRAWING FOR
 BRIDGE OVER TRENT CREEK
 ON NC #65 BETWEEN
 BAYBORO AND ORIENTAL

FEB 1959
 DRAWN BY: [Signature]
 CHECKED BY: [Signature]
 APPROVED BY: [Signature]

DESIGNED BY	DATE
CHECKED BY	DATE
APPROVED BY	DATE

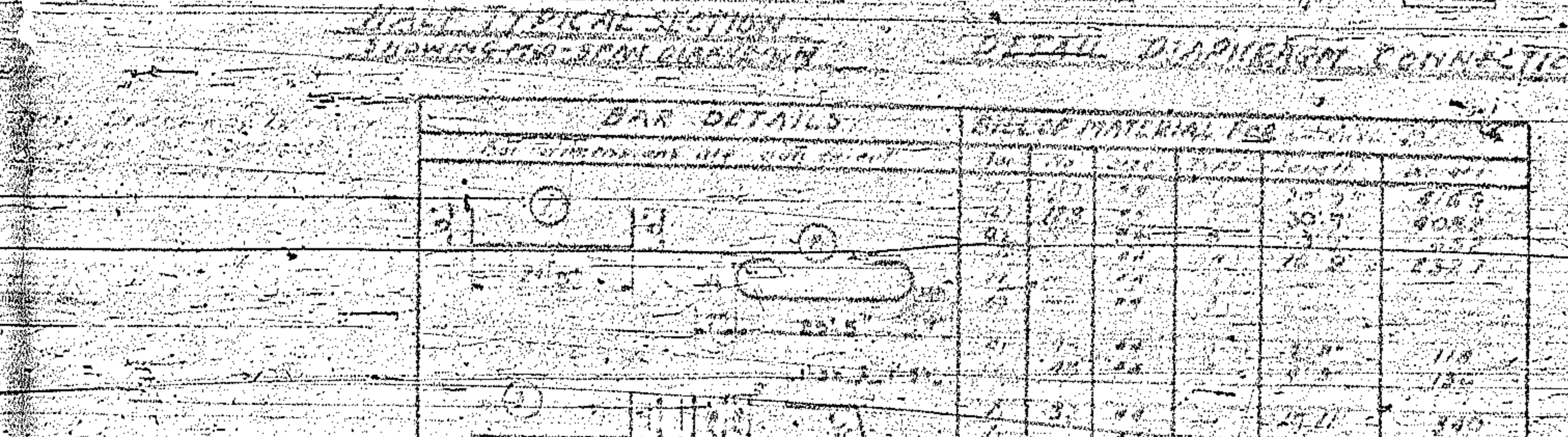
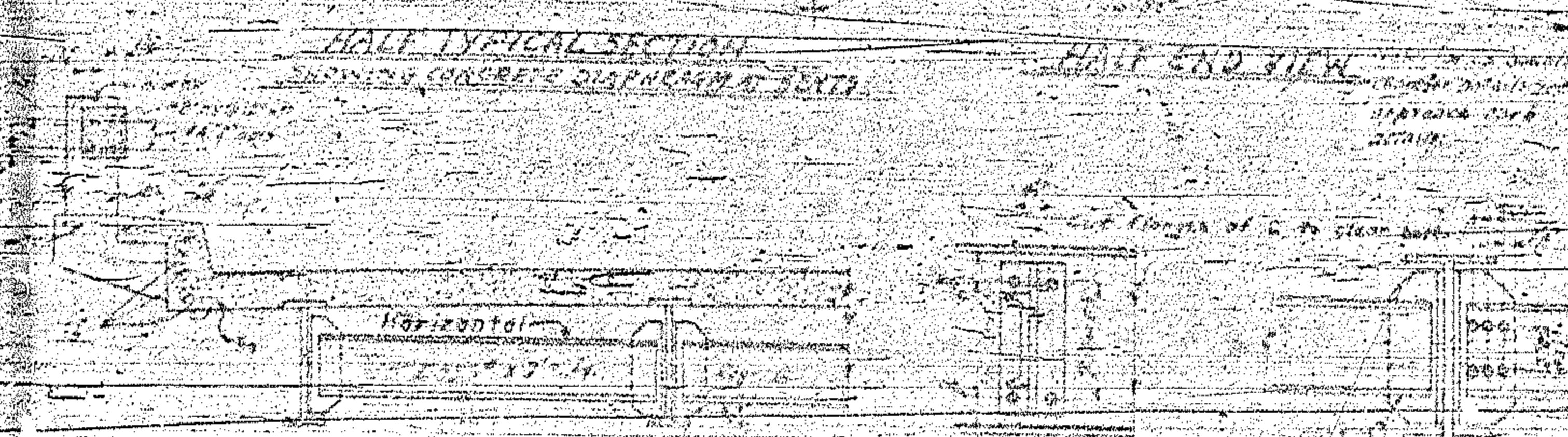
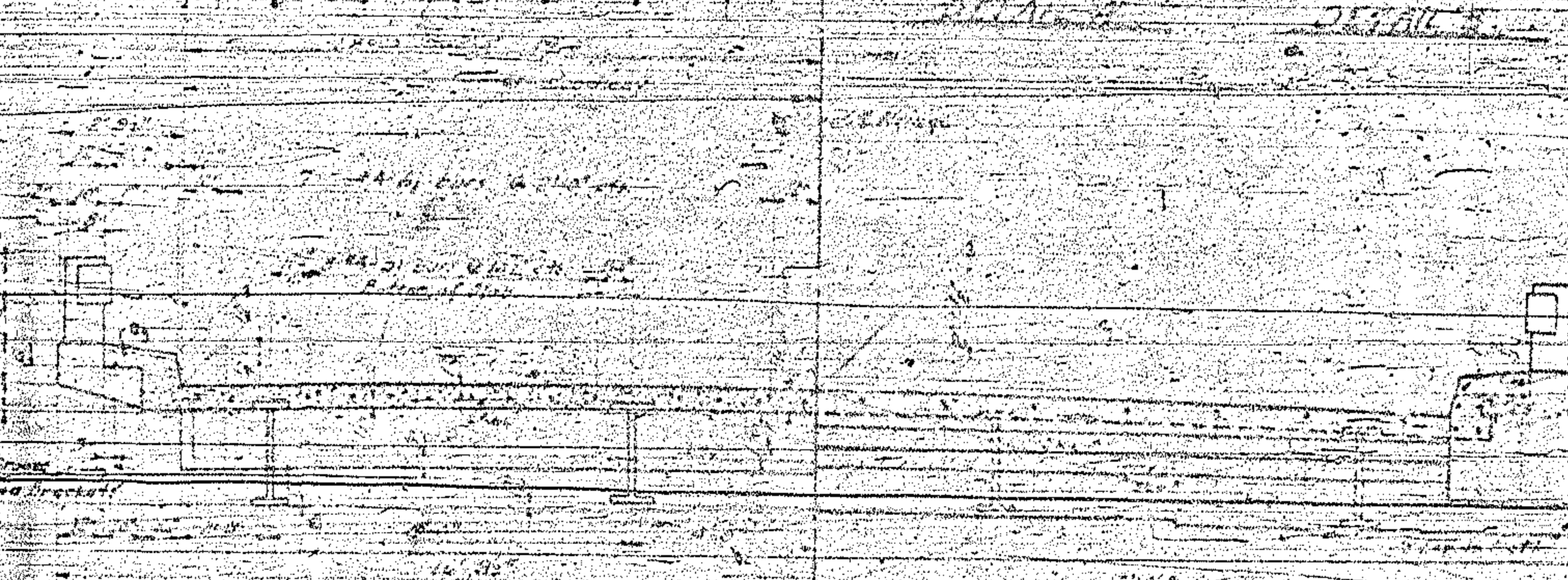
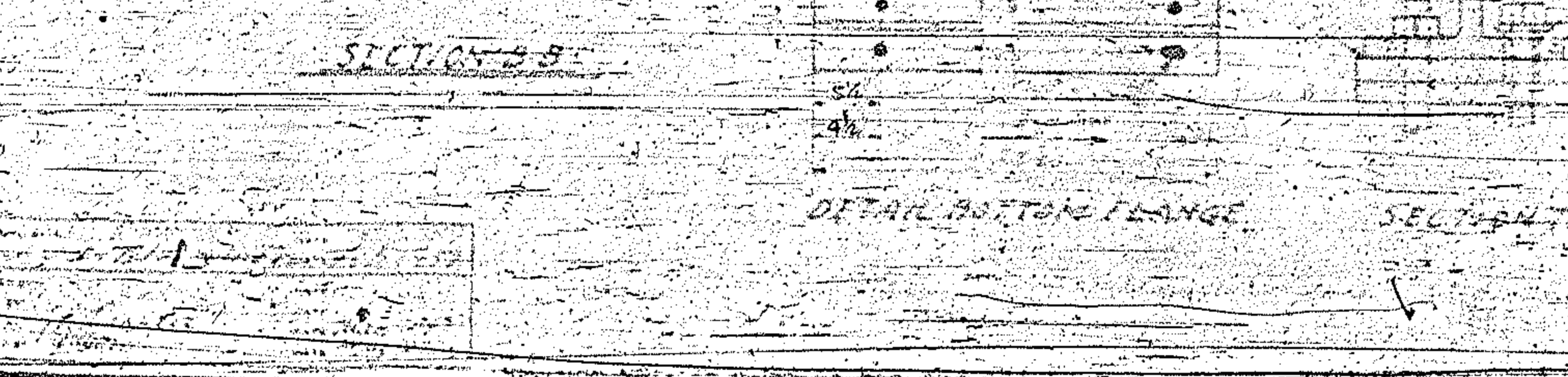
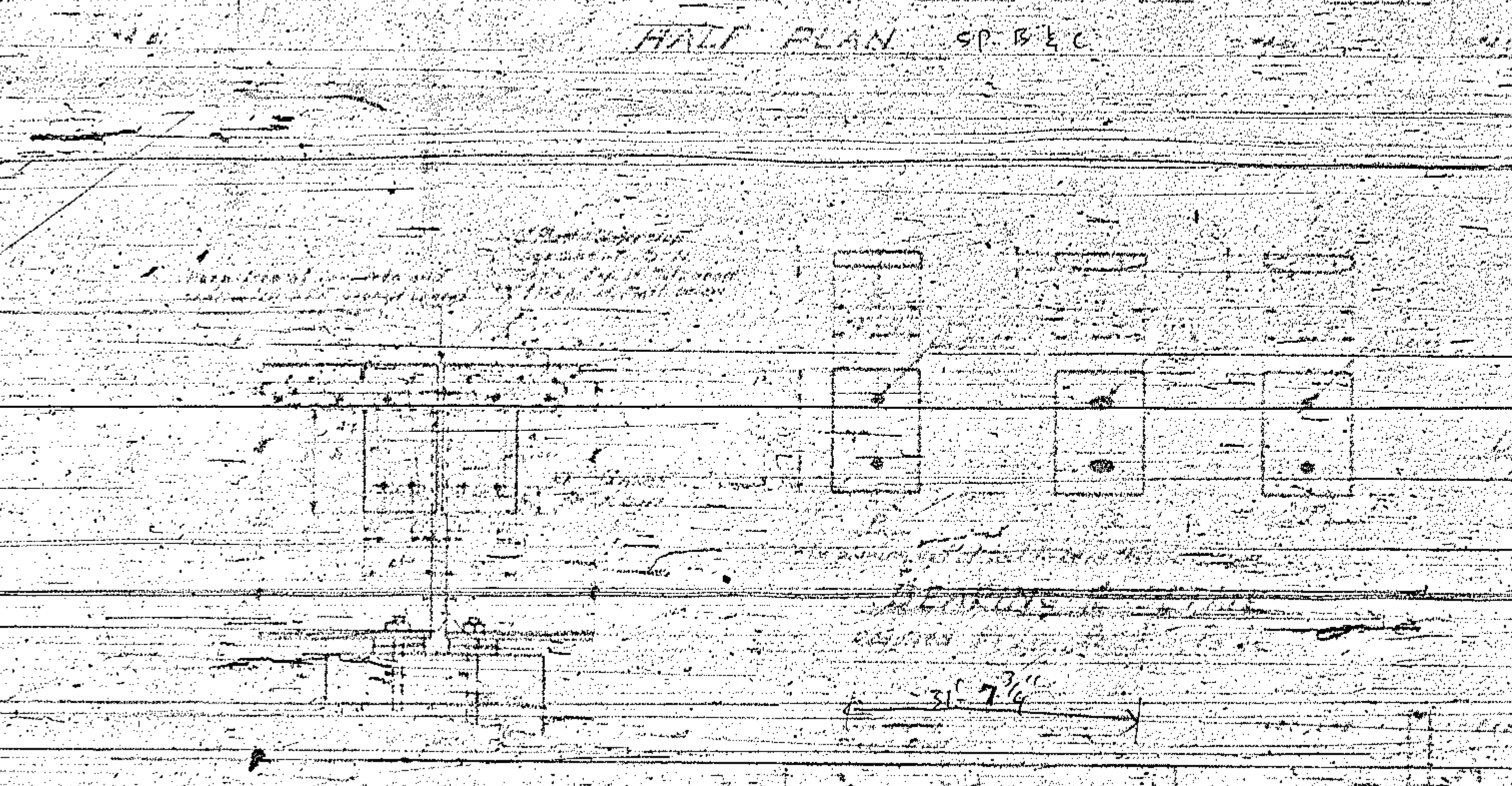
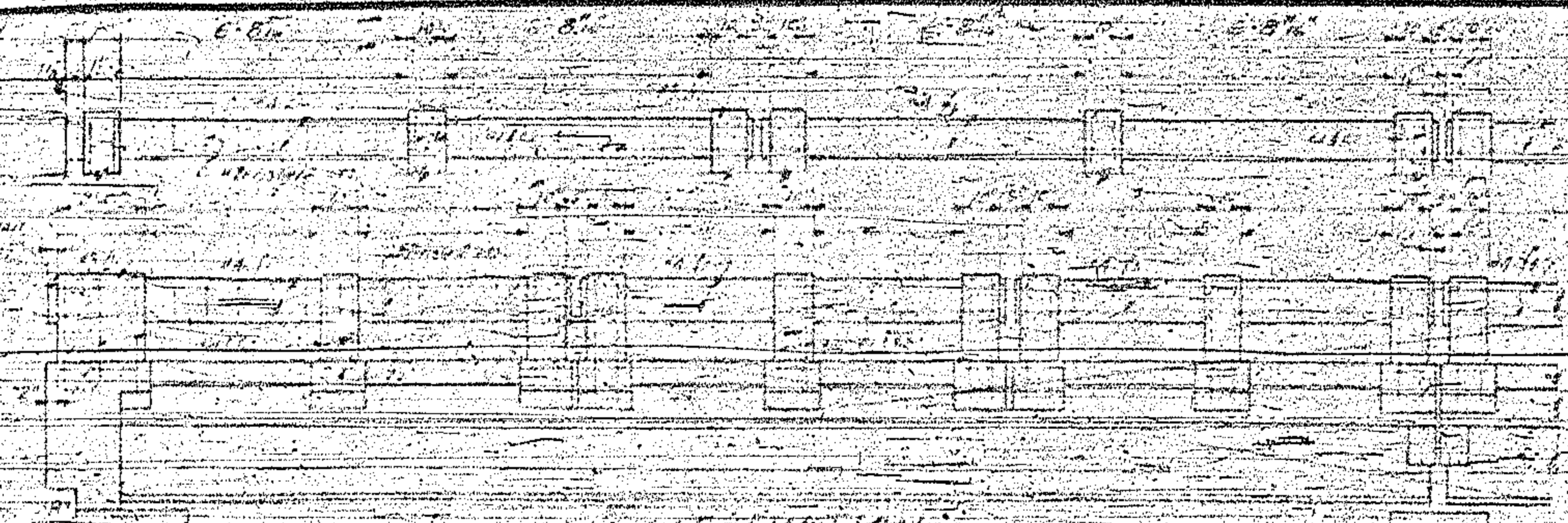


DATE: _____
 DRAWN BY: N.T. B. 2683
 PROJ. NO. 3-1265



BAR DETAILS		BILL OF MATERIALS FOR SPANS AED	
1	180	39.7	112
2	110	39.7	112
3	110	39.7	112
4	110	39.7	112
5	110	39.7	112
6	110	39.7	112
7	110	39.7	112
8	110	39.7	112
9	110	39.7	112
10	110	39.7	112
11	110	39.7	112
12	110	39.7	112
13	110	39.7	112
14	110	39.7	112
15	110	39.7	112
16	110	39.7	112
17	110	39.7	112
18	110	39.7	112
19	110	39.7	112
20	110	39.7	112
21	110	39.7	112
22	110	39.7	112
23	110	39.7	112
24	110	39.7	112
25	110	39.7	112
26	110	39.7	112
27	110	39.7	112
28	110	39.7	112
29	110	39.7	112
30	110	39.7	112
31	110	39.7	112
32	110	39.7	112
33	110	39.7	112
34	110	39.7	112
35	110	39.7	112
36	110	39.7	112
37	110	39.7	112
38	110	39.7	112
39	110	39.7	112
40	110	39.7	112
41	110	39.7	112
42	110	39.7	112
43	110	39.7	112
44	110	39.7	112
45	110	39.7	112
46	110	39.7	112
47	110	39.7	112
48	110	39.7	112
49	110	39.7	112
50	110	39.7	112

PROJECT NO. 3-1265
 FARMER COUNTY
 STATION 7+00
 SPAN AED
 STATE OF NORTH CAROLINA
 STATE HIGHWAY COMMISSION
 STANDARD
 T-BEAM SUPERSTRUCTURE
 WITH RC FLOOR & RAIL
 28' ROADWAY
 MAY 1957



BAR DETAILS

BAR NO.	SIZE	LENGTH	WEIGHT	TOTAL WEIGHT
1	1/2"	30.7'	416.5	416.5
2	1/2"	16.2'	237.7	654.2
3	1/2"	24.2'	345.0	1000.0
4	1/2"	24.2'	345.0	1345.0
5	1/2"	24.2'	345.0	1690.0
6	1/2"	24.2'	345.0	2035.0
7	1/2"	24.2'	345.0	2380.0
8	1/2"	24.2'	345.0	2725.0
9	1/2"	24.2'	345.0	3070.0
10	1/2"	24.2'	345.0	3415.0
11	1/2"	24.2'	345.0	3760.0
12	1/2"	24.2'	345.0	4105.0
13	1/2"	24.2'	345.0	4450.0
14	1/2"	24.2'	345.0	4795.0
15	1/2"	24.2'	345.0	5140.0
16	1/2"	24.2'	345.0	5485.0
17	1/2"	24.2'	345.0	5830.0
18	1/2"	24.2'	345.0	6175.0
19	1/2"	24.2'	345.0	6520.0
20	1/2"	24.2'	345.0	6865.0
21	1/2"	24.2'	345.0	7210.0
22	1/2"	24.2'	345.0	7555.0
23	1/2"	24.2'	345.0	7900.0
24	1/2"	24.2'	345.0	8245.0
25	1/2"	24.2'	345.0	8590.0
26	1/2"	24.2'	345.0	8935.0
27	1/2"	24.2'	345.0	9280.0
28	1/2"	24.2'	345.0	9625.0
29	1/2"	24.2'	345.0	9970.0
30	1/2"	24.2'	345.0	10315.0
31	1/2"	24.2'	345.0	10660.0
32	1/2"	24.2'	345.0	11005.0
33	1/2"	24.2'	345.0	11350.0
34	1/2"	24.2'	345.0	11695.0
35	1/2"	24.2'	345.0	12040.0
36	1/2"	24.2'	345.0	12385.0
37	1/2"	24.2'	345.0	12730.0
38	1/2"	24.2'	345.0	13075.0
39	1/2"	24.2'	345.0	13420.0
40	1/2"	24.2'	345.0	13765.0
41	1/2"	24.2'	345.0	14110.0
42	1/2"	24.2'	345.0	14455.0
43	1/2"	24.2'	345.0	14800.0
44	1/2"	24.2'	345.0	15145.0
45	1/2"	24.2'	345.0	15490.0
46	1/2"	24.2'	345.0	15835.0
47	1/2"	24.2'	345.0	16180.0
48	1/2"	24.2'	345.0	16525.0
49	1/2"	24.2'	345.0	16870.0
50	1/2"	24.2'	345.0	17215.0
51	1/2"	24.2'	345.0	17560.0
52	1/2"	24.2'	345.0	17905.0
53	1/2"	24.2'	345.0	18250.0
54	1/2"	24.2'	345.0	18595.0
55	1/2"	24.2'	345.0	18940.0
56	1/2"	24.2'	345.0	19285.0
57	1/2"	24.2'	345.0	19630.0
58	1/2"	24.2'	345.0	19975.0
59	1/2"	24.2'	345.0	20320.0
60	1/2"	24.2'	345.0	20665.0
61	1/2"	24.2'	345.0	21010.0
62	1/2"	24.2'	345.0	21355.0
63	1/2"	24.2'	345.0	21700.0
64	1/2"	24.2'	345.0	22045.0
65	1/2"	24.2'	345.0	22390.0
66	1/2"	24.2'	345.0	22735.0
67	1/2"	24.2'	345.0	23080.0
68	1/2"	24.2'	345.0	23425.0
69	1/2"	24.2'	345.0	23770.0
70	1/2"	24.2'	345.0	24115.0
71	1/2"	24.2'	345.0	24460.0
72	1/2"	24.2'	345.0	24805.0
73	1/2"	24.2'	345.0	25150.0
74	1/2"	24.2'	345.0	25495.0
75	1/2"	24.2'	345.0	25840.0
76	1/2"	24.2'	345.0	26185.0
77	1/2"	24.2'	345.0	26530.0
78	1/2"	24.2'	345.0	26875.0
79	1/2"	24.2'	345.0	27220.0
80	1/2"	24.2'	345.0	27565.0
81	1/2"	24.2'	345.0	27910.0
82	1/2"	24.2'	345.0	28255.0
83	1/2"	24.2'	345.0	28600.0
84	1/2"	24.2'	345.0	28945.0
85	1/2"	24.2'	345.0	29290.0
86	1/2"	24.2'	345.0	29635.0
87	1/2"	24.2'	345.0	29980.0
88	1/2"	24.2'	345.0	30325.0
89	1/2"	24.2'	345.0	30670.0
90	1/2"	24.2'	345.0	31015.0
91	1/2"	24.2'	345.0	31360.0
92	1/2"	24.2'	345.0	31705.0
93	1/2"	24.2'	345.0	32050.0
94	1/2"	24.2'	345.0	32395.0
95	1/2"	24.2'	345.0	32740.0
96	1/2"	24.2'	345.0	33085.0
97	1/2"	24.2'	345.0	33430.0
98	1/2"	24.2'	345.0	33775.0
99	1/2"	24.2'	345.0	34120.0
100	1/2"	24.2'	345.0	34465.0

1. All concrete shall be cast in place and cured for a minimum of 28 days before opening to traffic.

2. All steel reinforcement shall be lap spliced in accordance with the provisions of the AISC Code of Practice for the Construction of Reinforced Concrete.

3. All steel reinforcement shall be protected with a minimum of 2 inches of concrete cover.

4. All steel reinforcement shall be bent and tied in accordance with the provisions of the AISC Code of Practice for the Construction of Reinforced Concrete.

5. All steel reinforcement shall be bent and tied in accordance with the provisions of the AISC Code of Practice for the Construction of Reinforced Concrete.

6. All steel reinforcement shall be bent and tied in accordance with the provisions of the AISC Code of Practice for the Construction of Reinforced Concrete.

7. All steel reinforcement shall be bent and tied in accordance with the provisions of the AISC Code of Practice for the Construction of Reinforced Concrete.

8. All steel reinforcement shall be bent and tied in accordance with the provisions of the AISC Code of Practice for the Construction of Reinforced Concrete.

9. All steel reinforcement shall be bent and tied in accordance with the provisions of the AISC Code of Practice for the Construction of Reinforced Concrete.

10. All steel reinforcement shall be bent and tied in accordance with the provisions of the AISC Code of Practice for the Construction of Reinforced Concrete.

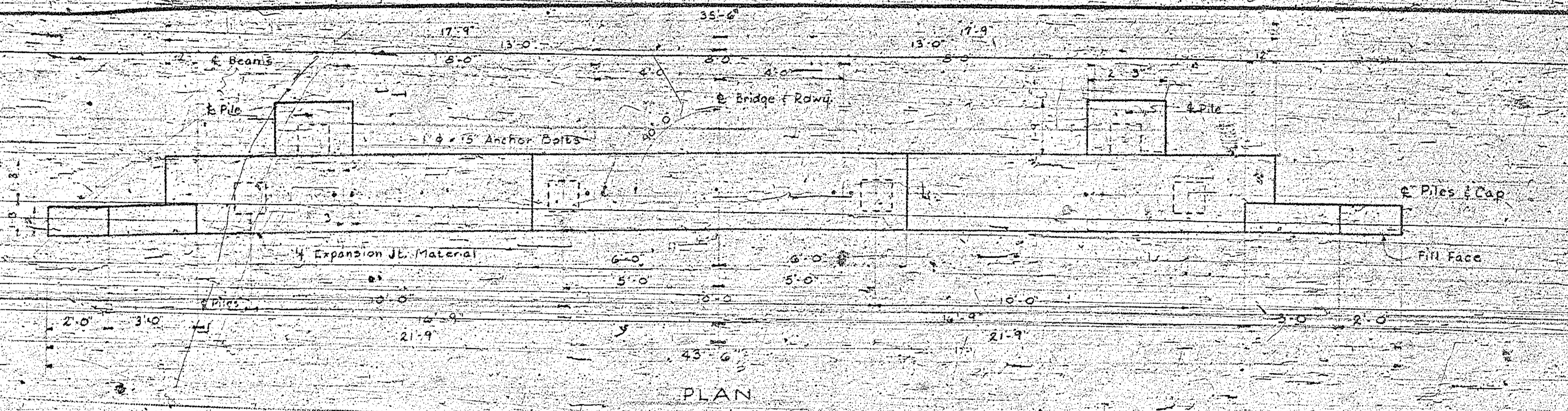
PROJECT NO. 312653
 PAMELO COUNTY
 STATION 127+04.5

STATE HIGHWAY COMMISSION

STANDARD
 I BEAM SUPERSTRUCTURE
 WITH RC FLOOR & RAIL
 28' ROADWAY

MAY 1987

SHEET 5 OF 53



BAR TYPES
All dim are out to out.

NO.	SIZE	TYPE	LENGTH	WEIGHT
b1	6	"10	1'-38.0"	98.1
b2	2	"10 Str	43.2"	37.1
b3	8	"4 Str	18.3"	9.8
b4	2	"6	5.3"	4.7
b5	2	"6	4	3.3
b6	1	"8 Str	43.2"	11.5
b7	9	"4 Str	8.2"	13
b8	1	"8 Str	35.2"	94
h1	10	"4 Str	4-8"	50
h2	6	"4 Str	5-1"	20
v1	20	"4 Str	6-1"	81

BILL OF MATERIAL
ONE L.B.T. SHOWN ~ 2 REQ'D.

BAR NO.	SIZE	TYPE	LENGTH	WEIGHT
b1	6	"10	1'-38.0"	98.1
b2	2	"10 Str	43.2"	37.1
b3	8	"4 Str	18.3"	9.8
b4	2	"6	5.3"	4.7
b5	2	"6	4	3.3
b6	1	"8 Str	43.2"	11.5
b7	9	"4 Str	8.2"	13
b8	1	"8 Str	35.2"	94
h1	10	"4 Str	4-8"	50
h2	6	"4 Str	5-1"	20
v1	20	"4 Str	6-1"	81

Reinforcing Steel ~ 165,2014 201
 Prestress Conc. Piles ~ 165,2014 201
 Prestress Conc. Piles ~ 165,2014 201

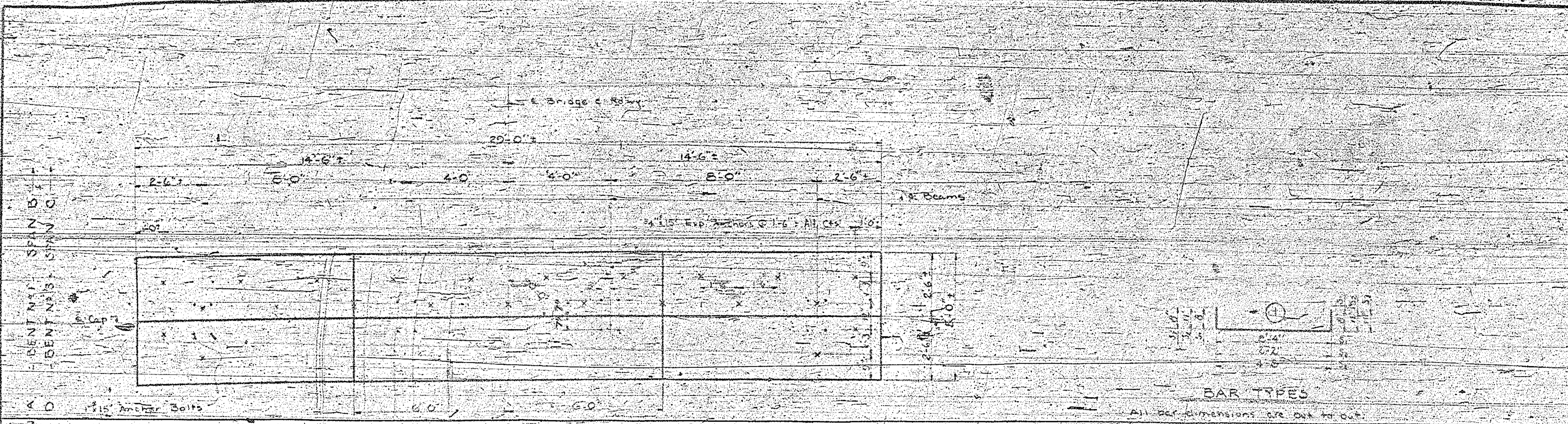
Note: Concrete displaced by pile heads has been deducted from total quantity.

PROJECT NO. 8.12653
AMECO COUNTY
STATION: 220 + 04.5

STATE OF NORTH CAROLINA
STATE HIGHWAY COMMISSION
 END BENT No. 142
 FEBRUARY 1959

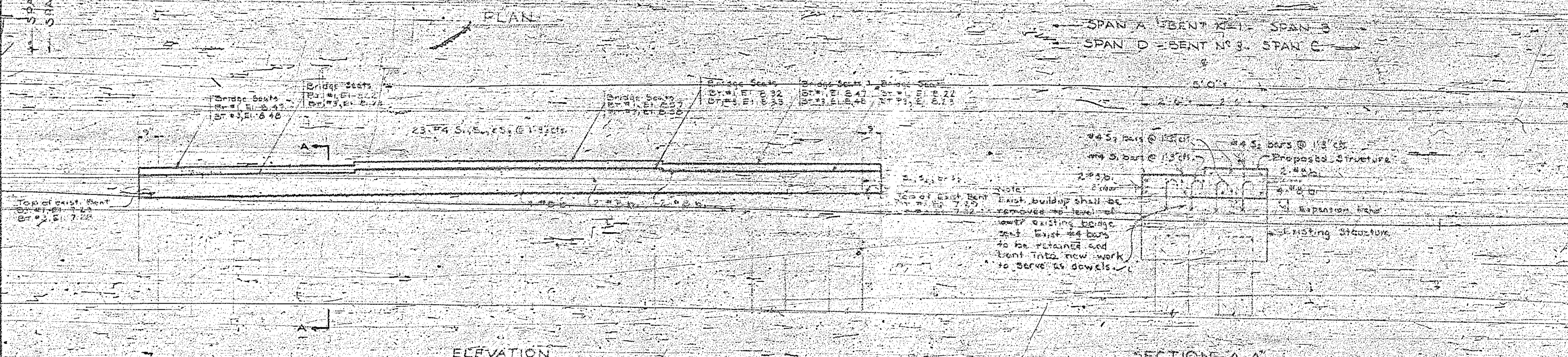
DESIGNED BY
 CHECKED BY
 DATE
 DATE
 DATE

BILL OF MATERIAL				
FOR ONE ST. ONLY TWO RECS				
BAR NO.	SIZE	TYPE	LENGTH	WEIGHT
B	8	HR	20'-0"	1012
S	23	#4	1'-0"	56
S	23	#4	1'-4"	76
S	23	#4	6'-0"	276



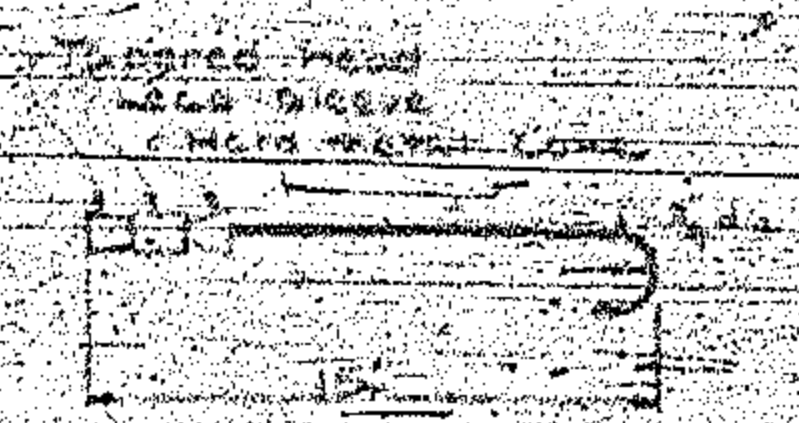
BAR TYPES

All bar dimensions are out to out.



SECTION A-A

PROJECT NO. 8-12653
 PAMLICO COUNTY
 STATION: 220+04.5



Anchors to be American Expansion Anchors as shown on an approved Equal.
EXPANSION ANCHOR DETAIL

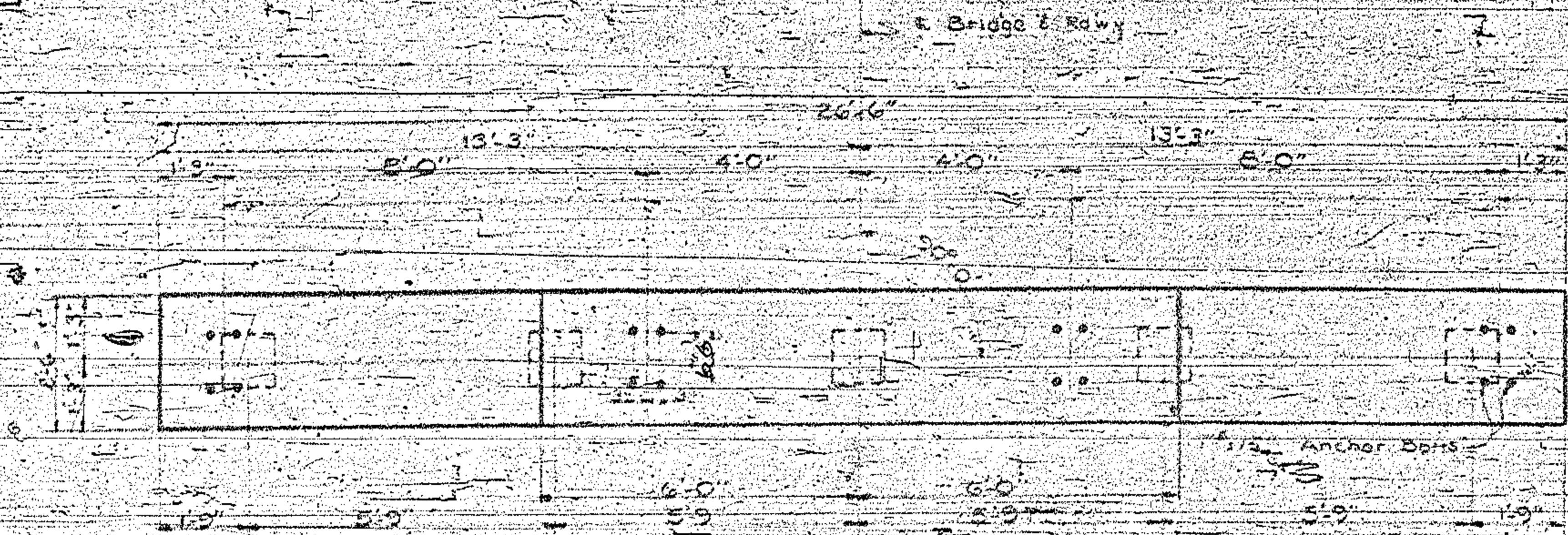
STATE OF NORTH CAROLINA
STATE HIGHWAY COMMISSION
 DIVISION
 INTERIOR BENT 1 of 3
 Feb. 25

DESIGNED BY	DATE
CHECKED BY	DATE

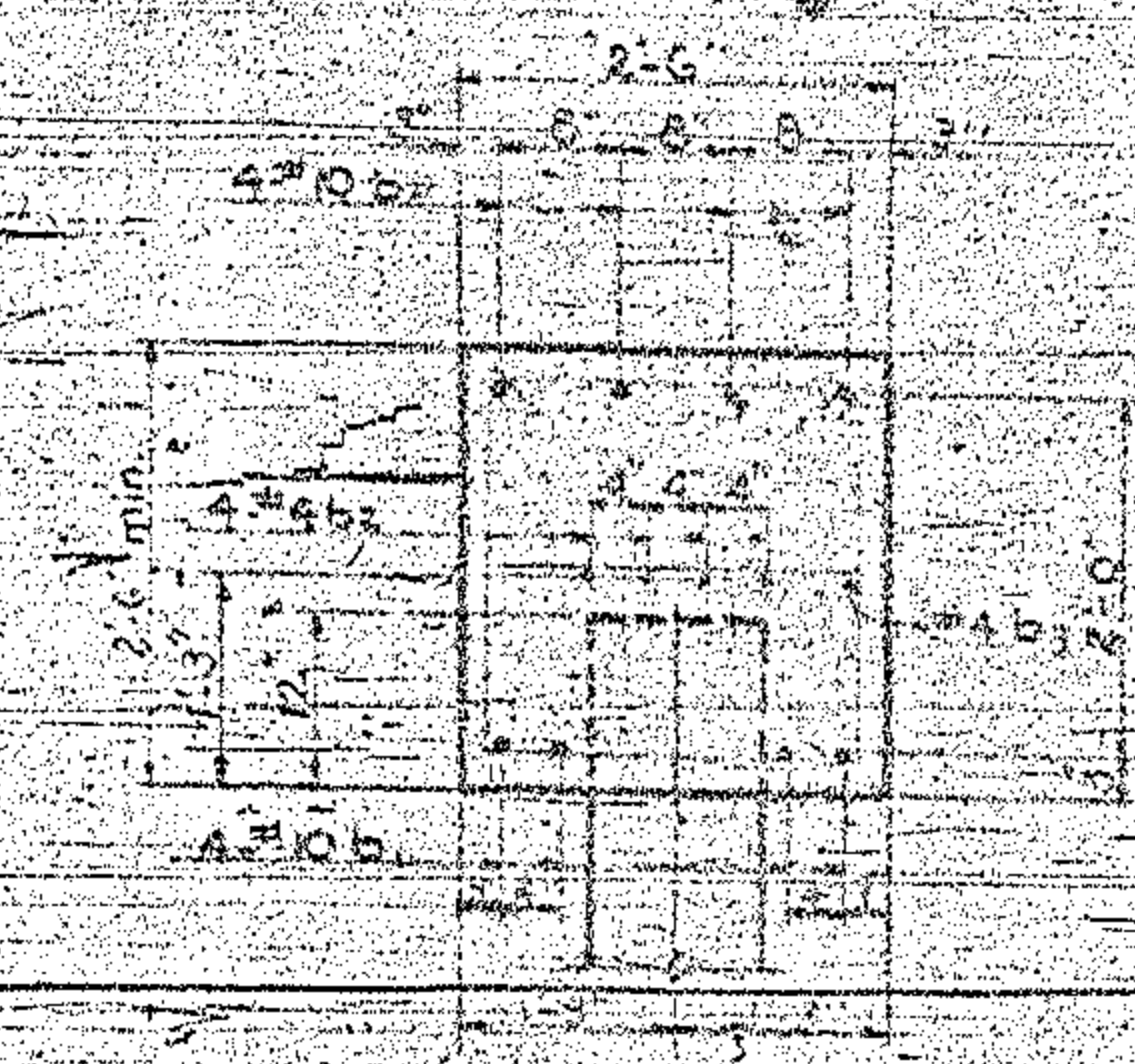
FED. ROAD DIST. NO. 721
 F. M.C. 67265
 F.A. Proj. 5-726

BILL OF MATERIAL FOR INTERIOR BENT # 2

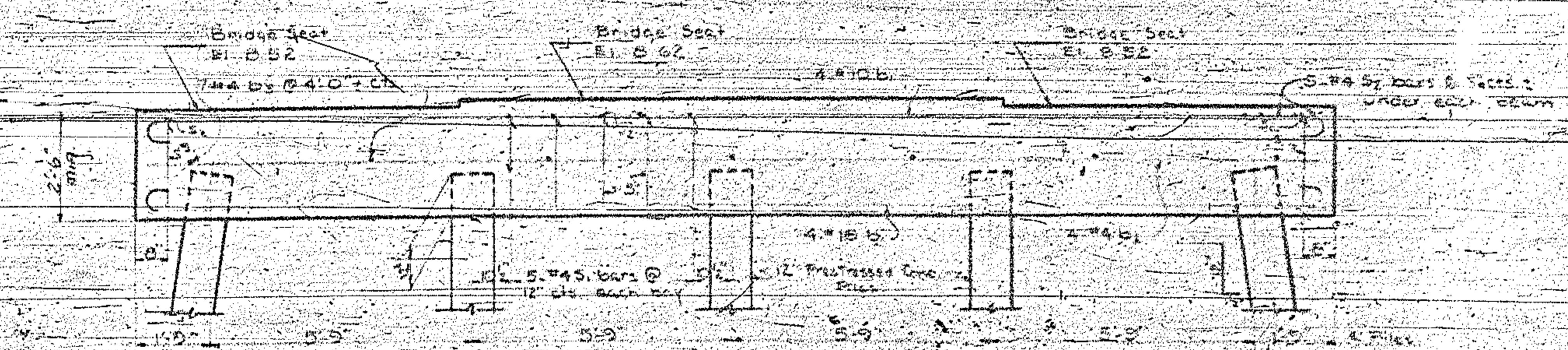
BAR NO.	SIZE	TYPE	LENGTH	WEIGHT
b1	8	40	20.0	376
b2	8	44	13.8	73
b3	7	44	2.2	10
s	22	44	7.3	107
st	42	44	2.11	62



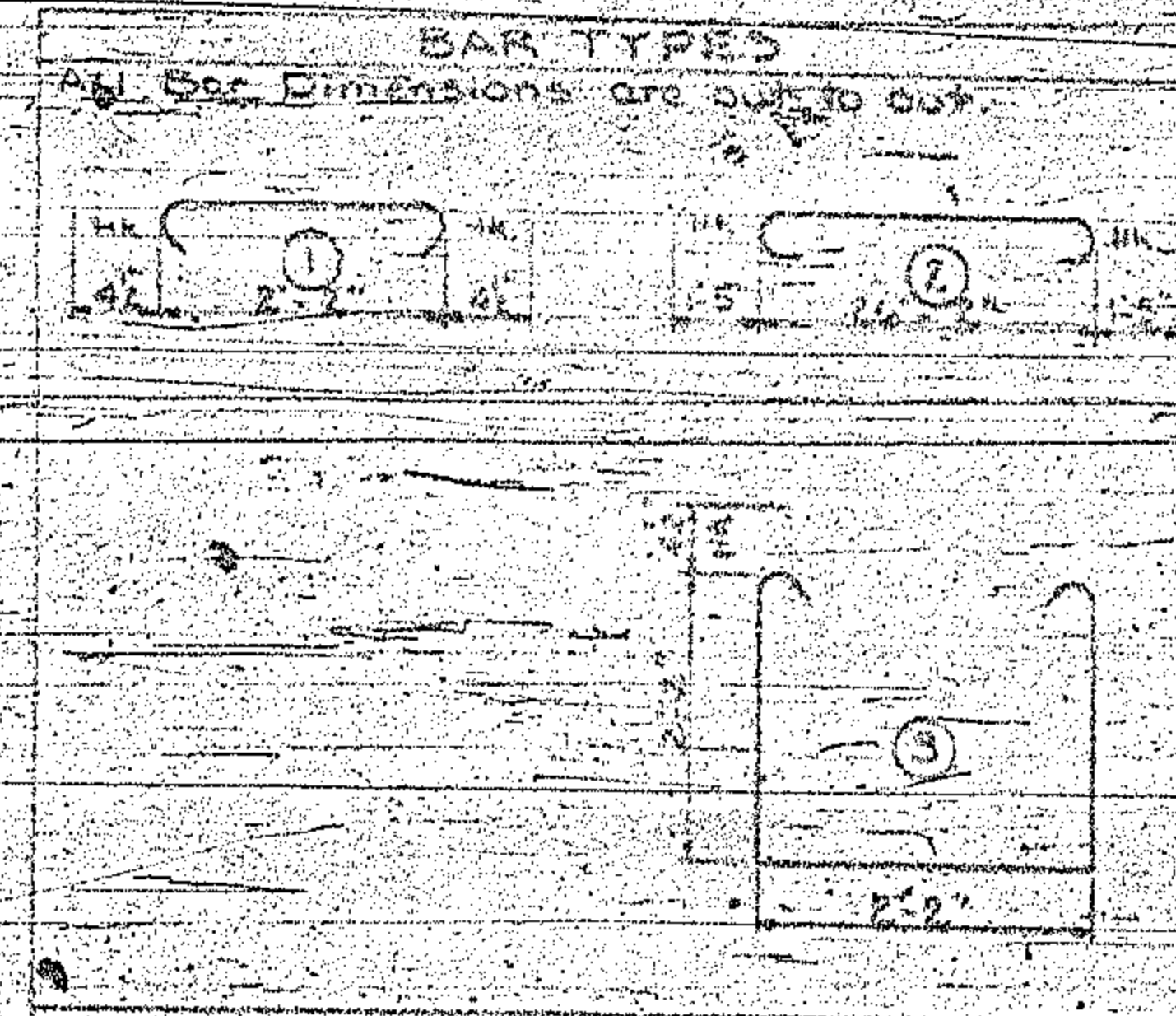
PLAN



SECTION THRU CAP



ELEVATION



Concrete displaced by pile heads has been deducted from concrete quantity.

PROJECT NO. 612653
 PAMLICO COUNTY
 STATION: 220+04.5

STATE OF NORTH CAROLINA
 STATE HIGHWAY COMMISSION
 INTERIOR BENT NO 2
 Feb. 1939

DESIGNED BY: Robert S. Dancy DATE: 1/20/39
 CHECKED BY: DATE: 2/10/39
 APPROVED BY: DATE: 2/10/39