

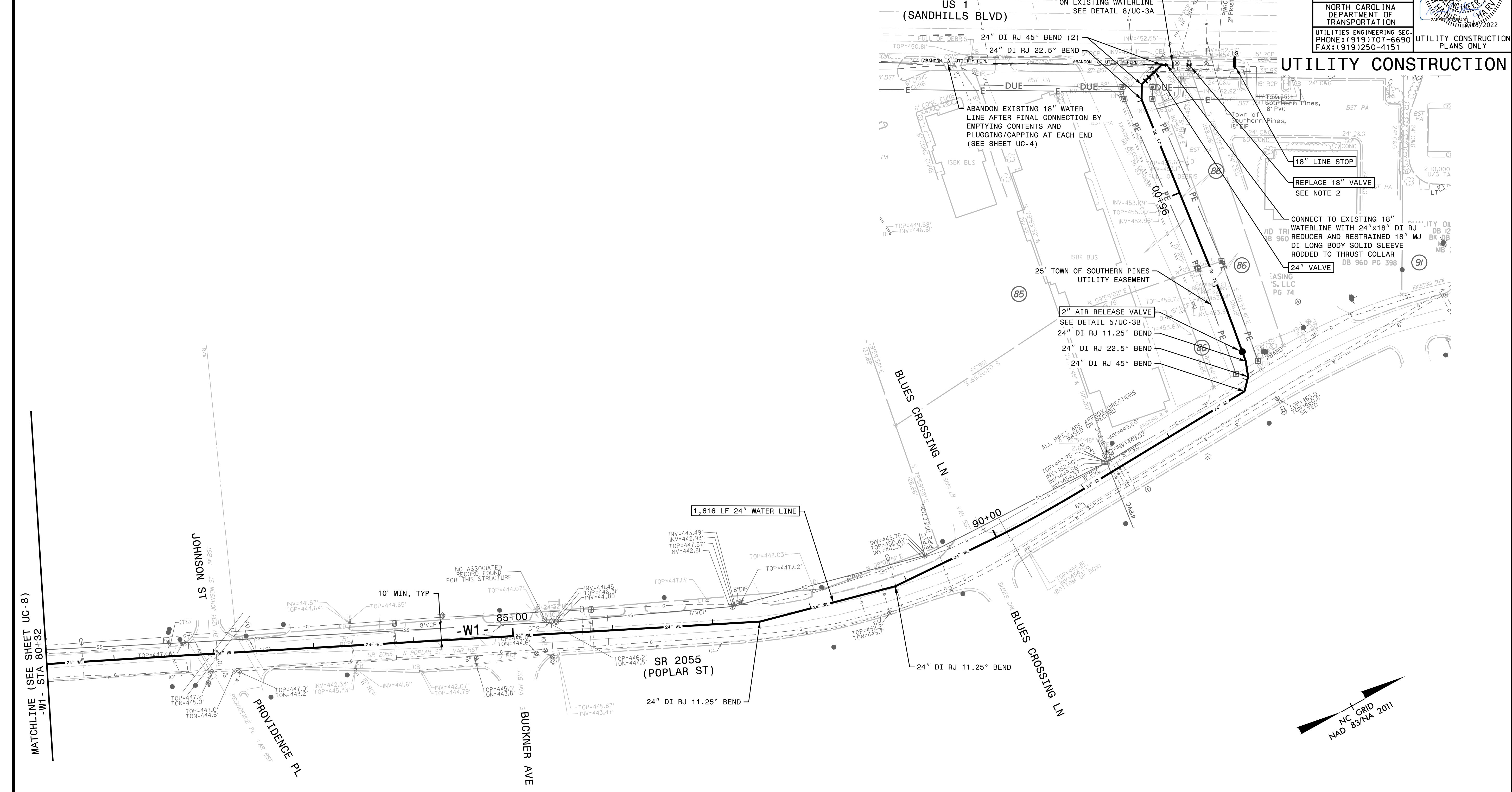
5/14/2022

3/15/2022



421 FAYETTEVILLE STREET, SUITE 600  
RALEIGH, NC 27601

PROJECT REFERENCE NO.	SHEET NO.
U-5815BA	UC-9
DESIGNED BY: NLH	
DRAWN BY: JNB	
CHECKED BY: CPM	
APPROVED BY: NLH	
REVISED:	
NORTH CAROLINA DEPARTMENT OF TRANSPORTATION	
UTILITIES ENGINEERING SEC. PHONE: (919) 707-6690 FAX: (919) 250-4151	
UTILITY CONSTRUCTION PLANS ONLY	



MATCHLINE (SEE SHEET UC-8)  
-W1- STA 80+32

NOTE:  
THE ESTIMATED QUANTITY OF TOSP DUCTILE IRON WATER PIPE FITTINGS ON THIS PLAN SHEET IS 6,965 POUNDS. THE ACTUAL QUANTITY AND TYPE OF FITTINGS WILL VARY BASED ON FIELD CONDITIONS.

NOTE:  
THE ESTIMATED QUANTITY OF TOA DUCTILE IRON WATER PIPE FITTINGS ON THIS PLAN SHEET IS 0 POUNDS. THE ACTUAL QUANTITY AND TYPE OF FITTINGS WILL VARY BASED ON FIELD CONDITIONS.

- NOTES:
- CONTRACTOR SHALL RETAIN AND PROTECT IN PLACE ALL WATER SERVICE LINES AND SANITARY SEWER LATERALS NOT SPECIFIED TO BE REPLACED.
    - WATER SERVICE LINES BROKEN DURING CONSTRUCTION SHALL BE REPLACED ENTIRELY FROM THE WATER MAIN TO THE WATER METER PER TOWN OF ABERDEEN DETAIL W.6. THE SERVICE LINE BETWEEN THE CORPORATION STOP AT THE WATER MAIN AND THE CURB STOP AT THE WATER METER SHALL BE ONE CONTINUOUS PIECE WITHOUT FITTINGS OR COUPLINGS.
    - SEWER LATERALS MADE OF BITUMINOUS FIBER PIPE OR VITRIFIED CLAY PIPE THAT ARE DAMAGED DURING CONSTRUCTION SHALL BE REPLACED FROM THE SEWER MAIN TO THE NEAREST UPSTREAM UNDAMAGED PIPE JOINT OR EXISTING CLEANOUT WITH SCH 40 PVC AND APPROVED RUBBER COUPLERS DESIGNED FOR THE INTENDED USE.
  - REPLACE EXISTING 18" WATER VALVE WITHIN EXISTING WATER MANHOLE.
  - SEE PHASING NOTES AND TIME RESTRICTIONS ON TMP SHEETS.

SEE SHEET UC-12 AND UC-13 FOR -W1- PROFILE

