

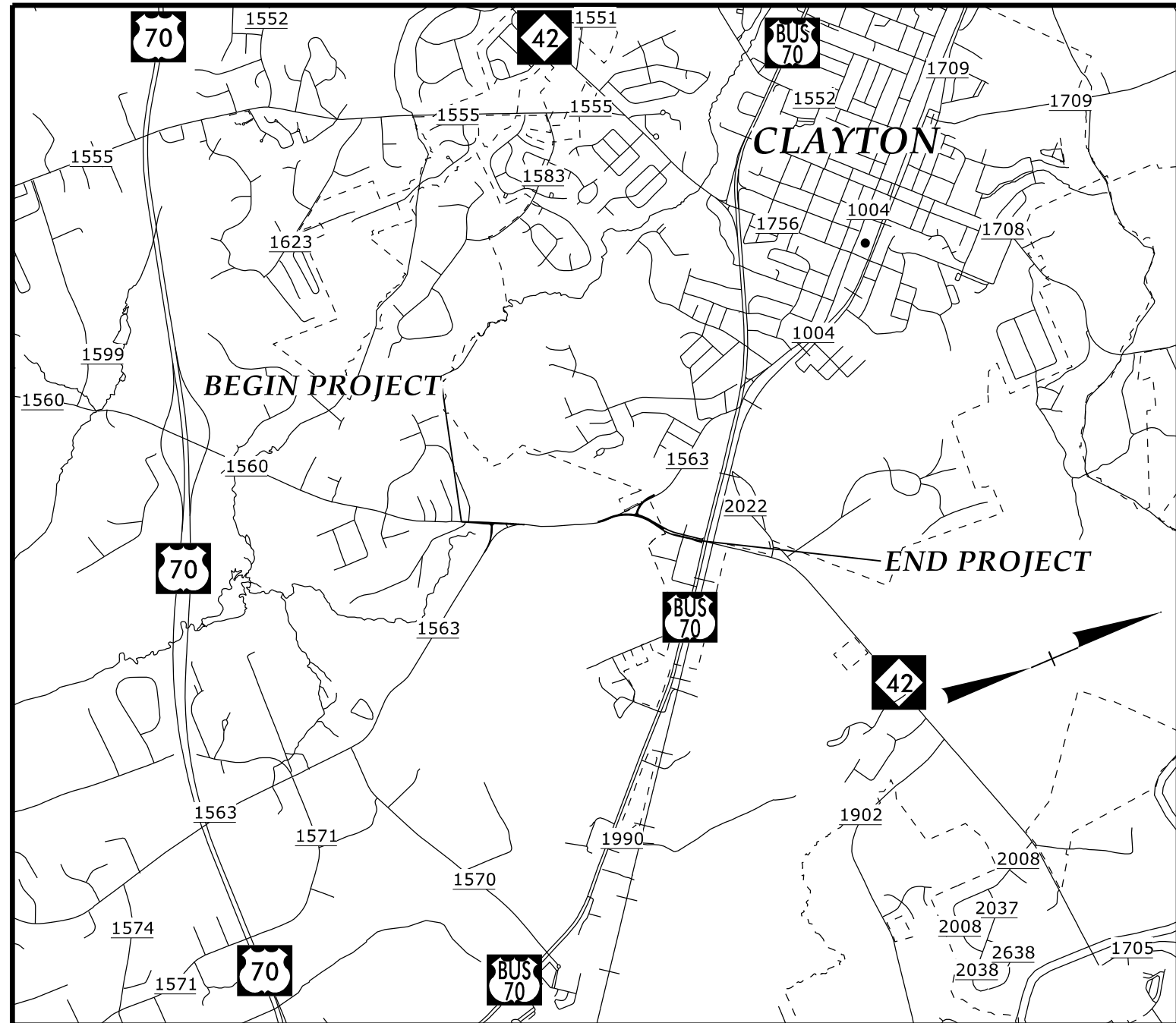
**This electronic collection of documents is provided  
for the convenience of the user  
and is Not a Certified Document –**

**The documents contained herein were originally issued  
and sealed by the individuals whose names and license  
numbers appear on each page, on the dates appearing  
with their signature on that page.**

**This file or an individual page  
shall not be considered a certified document.**

09/08/99

TIP PROJECT: U-6223



VICINITY MAP

STATE OF NORTH CAROLINA  
DIVISION OF HIGHWAYS

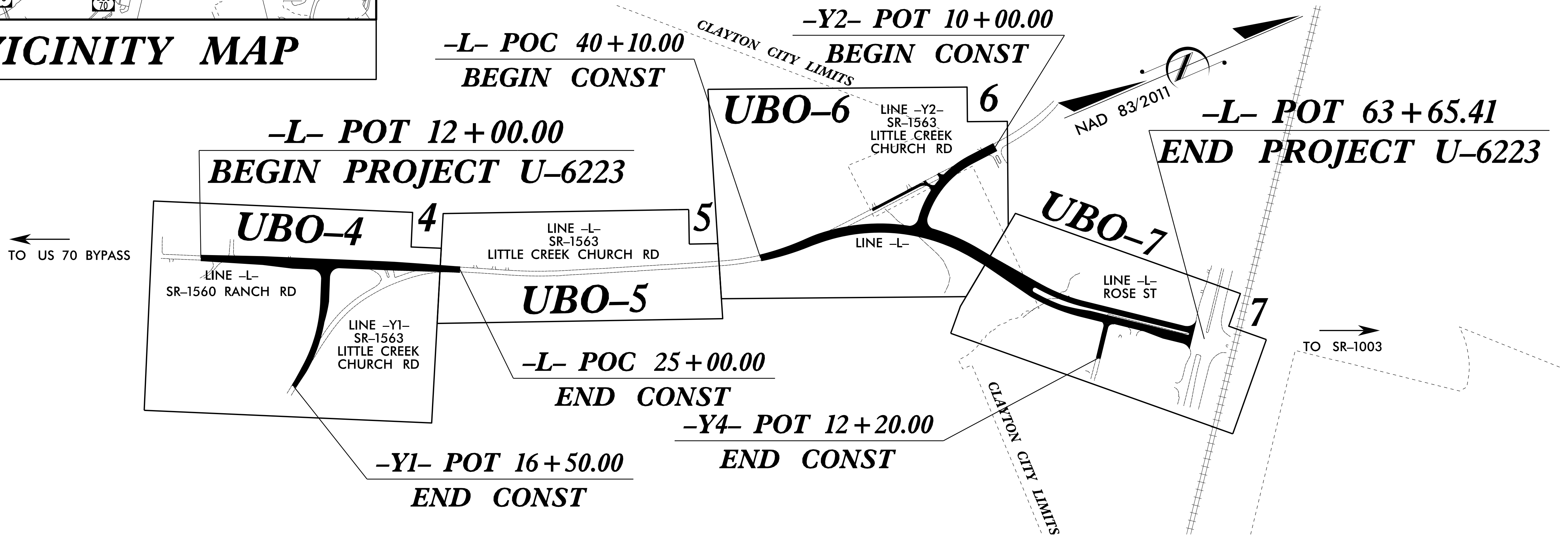
**UTILITIES BY OTHERS PLANS  
JOHNSTON COUNTY**

LOCATION: NEW LOCATION FROM SR-1560 (RANCH ROAD)  
TO THE US-70 BUS & NC-42 INTERSECTION.

TYPE OF WORK: UTILITY

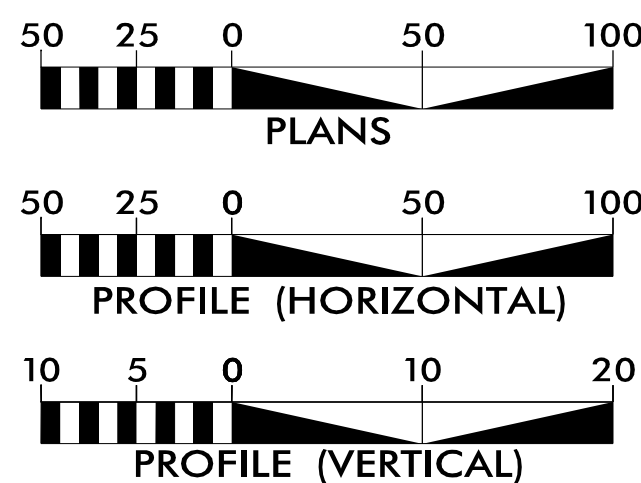
T.I.P. NO.	SHEET NO.
U-6223	UBO-1

NOTE:  
ALL UTILITY WORK SHOWN ON THIS SHEET IS DONE BY OTHERS.  
NO PAYMENT WILL BE MADE TO THE CONTRACTOR FOR UTILITY WORK SHOWN ON THIS SHEET.



24-MAY-2022 15:35 R:\Roadway\Proj\Utility\U-6223\_UTIL\_TSH01.dgn Division 4 DDC

GRAPHIC SCALES



INDEX OF SHEETS

SHEET NO.:	DESCRIPTION:
UO-1	TITLE SHEET
UO-02 THRU UO-07	UBO PLAN SHEETS

UTILITY OWNERS WITH CONFLICTS

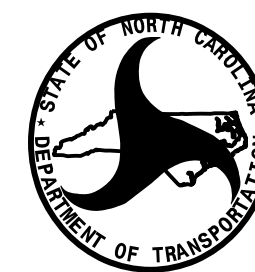
- (A) POWER - DUKE ENERGY
- (B) POWER - TOWN OF CLAYTON
- (C) COMMUNICATION - SPECTRUM
- (D) COMMUNICATION - LUMEN TECHNOLOGIES
- (E) GAS - PIEDMONT NATURAL GAS

PREPARED IN THE OFFICE OF:

DIVISION OF HIGHWAYS

Division 4  
509 Ward Blvd.  
Wilson NC, 27895

KYLE PLEASANT PROJECT UTILITIES ENGINEER  
FRANK ZDELAR PROJECT UTILITY COORDINATOR



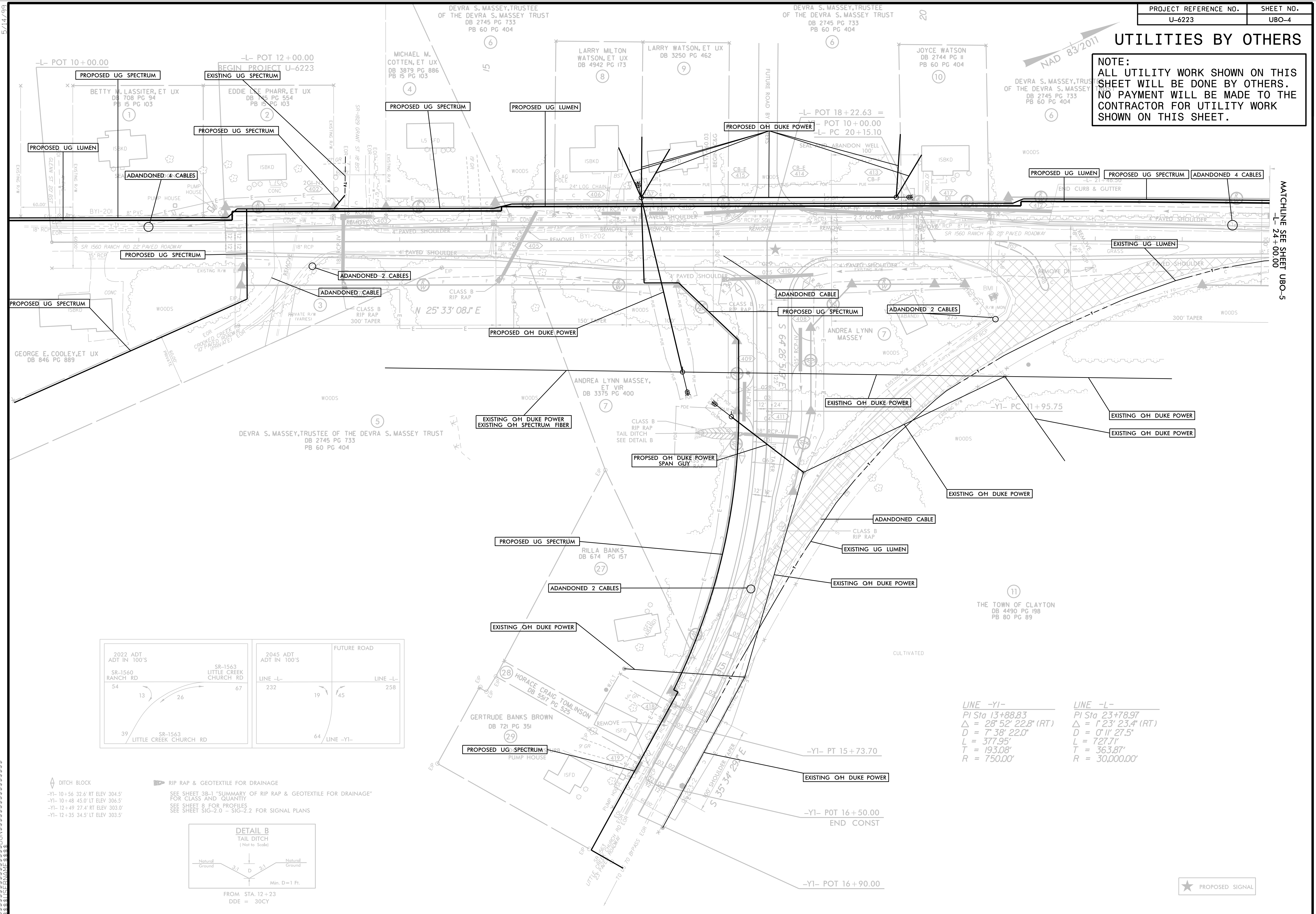
DIVISION OF HIGHWAYS  
DIVISION 04

509 Ward Blvd.  
Wilson NC, 27895

ADDISON GAINES, PE DIVISION CONTACT #1

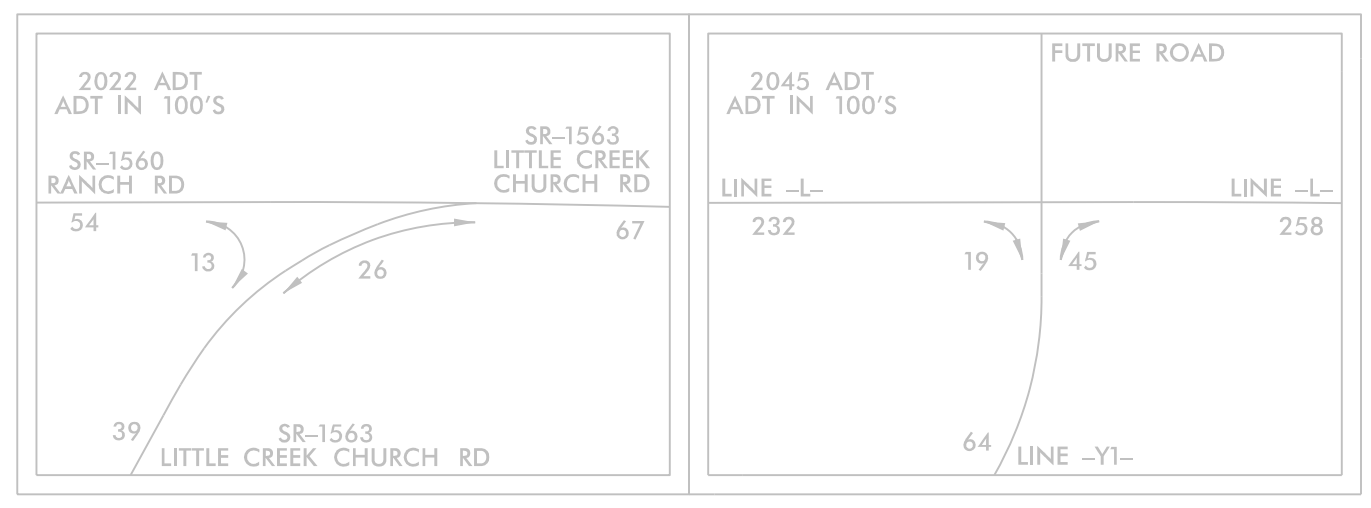
UTILITIES BY OTHERS

NOTE:  
ALL UTILITY WORK SHOWN ON THIS SHEET WILL BE DONE BY OTHERS. NO PAYMENT WILL BE MADE TO THE CONTRACTOR FOR UTILITY WORK SHOWN ON THIS SHEET.



5/14/09

MATCHLINE SEE SHEET UBO-5



**DITCH BLOCK**

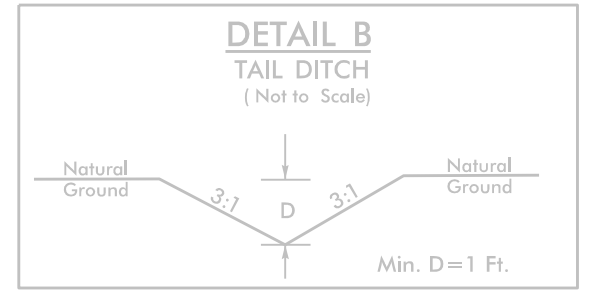
- YI- 10+56 32.6' RT ELEV 304.5'
- YI- 10+48 45.0' LT ELEV 306.5'
- YI- 12+49 27.4' RT ELEV 303.0'
- YI- 12+35 34.5' LT ELEV 303.5'

**RIP RAP & GEOTEXTILE FOR DRAINAGE**

SEE SHEET 3B-1 "SUMMARY OF RIP RAP & GEOTEXTILE FOR DRAINAGE" FOR CLASS AND QUANTITY

SEE SHEET B FOR PROFILES

SEE SHEET SIG-2.0 - SIG-2.2 FOR SIGNAL PLANS



**LINE -YI-**  
PI Sta 13+88.83  
 $\Delta = 28^{\circ} 52' 22.8" (RT)$   
 $D = 7^{\circ} 38' 22.0"$   
 $L = 377.95'$   
 $T = 193.08'$   
 $R = 750.00'$

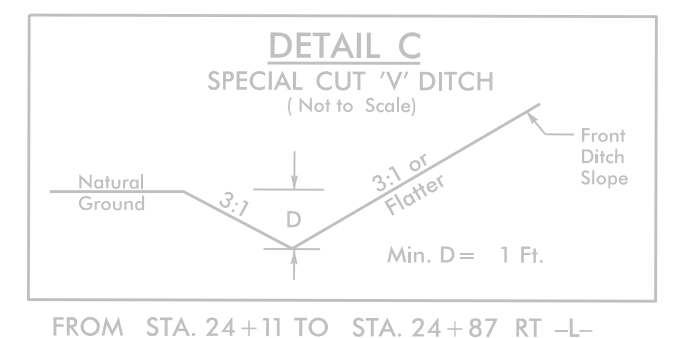
**LINE -L-**  
PI Sta 23+78.97  
 $\Delta = 1^{\circ} 23' 23.4" (RT)$   
 $D = 0^{\circ} 11' 27.5"$   
 $L = 727.71'$   
 $T = 363.87'$   
 $R = 30,000.00'$

★ PROPOSED SIGNAL

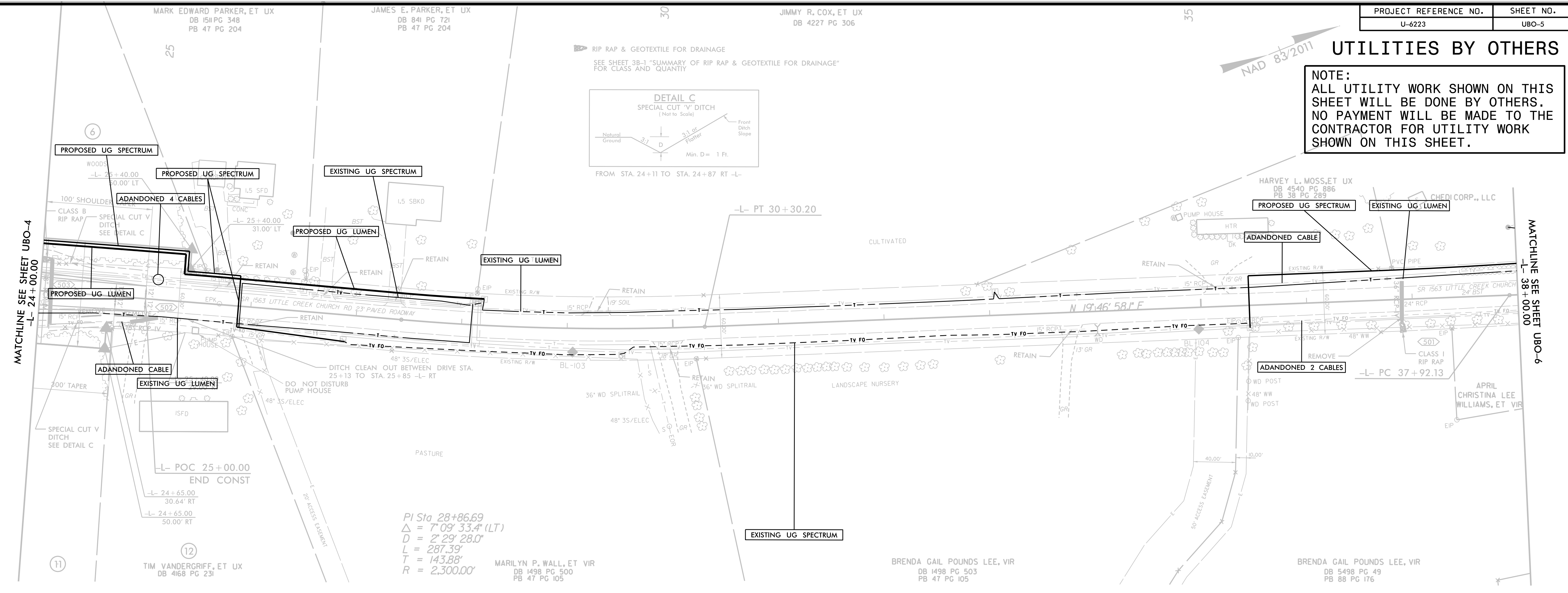
# UTILITIES BY OTHERS

**NOTE:**  
ALL UTILITY WORK SHOWN ON THIS SHEET WILL BE DONE BY OTHERS. NO PAYMENT WILL BE MADE TO THE CONTRACTOR FOR UTILITY WORK SHOWN ON THIS SHEET.

▲ RIP RAP & GEOTEXTILE FOR DRAINAGE  
SEE SHEET 3B-1 "SUMMARY OF RIP RAP & GEOTEXTILE FOR DRAINAGE" FOR CLASS AND QUANTITY



FROM STA. 24+11 TO STA. 24+87 RT -L-



MARK EDWARD PARKER, ET UX  
DB 1511 PG 348  
PB 47 PG 204

JAMES E. PARKER, ET UX  
DB 841 PG 721  
PB 47 PG 204

JIMMY R. COX, ET UX  
DB 4227 PG 306

35



MATCHLINE SEE SHEET UBO-4  
-L- 24+00.00

MATCHLINE SEE SHEET UBO-6  
-L- 38+00.00

11  
TIM VANDERGRIF, ET UX  
DB 4168 PG 231

PI Sta 28+86.69  
Δ = 7° 09' 33.4" (LT)  
D = 2' 29' 28.0"  
L = 287.39'  
T = 143.88'  
R = 2,300.00'  
MARILYN P. WALL, ET VIR  
DB 1498 PG 500  
PB 47 PG 105

BRENDA GAIL POUNDS LEE, VIR  
DB 1498 PG 503  
PB 47 PG 105

BRENDA GAIL POUNDS LEE, VIR  
DB 5498 PG 49  
PB 88 PG 176

5/14/99

1  
2  
3  
4  
5  
6  
7  
8  
9  
10  
11  
12  
13  
14  
15  
16  
17  
18  
19  
20  
21  
22  
23  
24  
25  
26  
27  
28  
29  
30  
31  
32  
33  
34  
35  
36  
37  
38  
39  
40  
41  
42  
43  
44  
45  
46  
47  
48  
49  
50  
51  
52  
53  
54  
55  
56  
57  
58  
59  
60  
61  
62  
63  
64  
65  
66  
67  
68  
69  
70  
71  
72  
73  
74  
75  
76  
77  
78  
79  
80  
81  
82  
83  
84  
85  
86  
87  
88  
89  
90  
91  
92  
93  
94  
95  
96  
97  
98  
99  
100

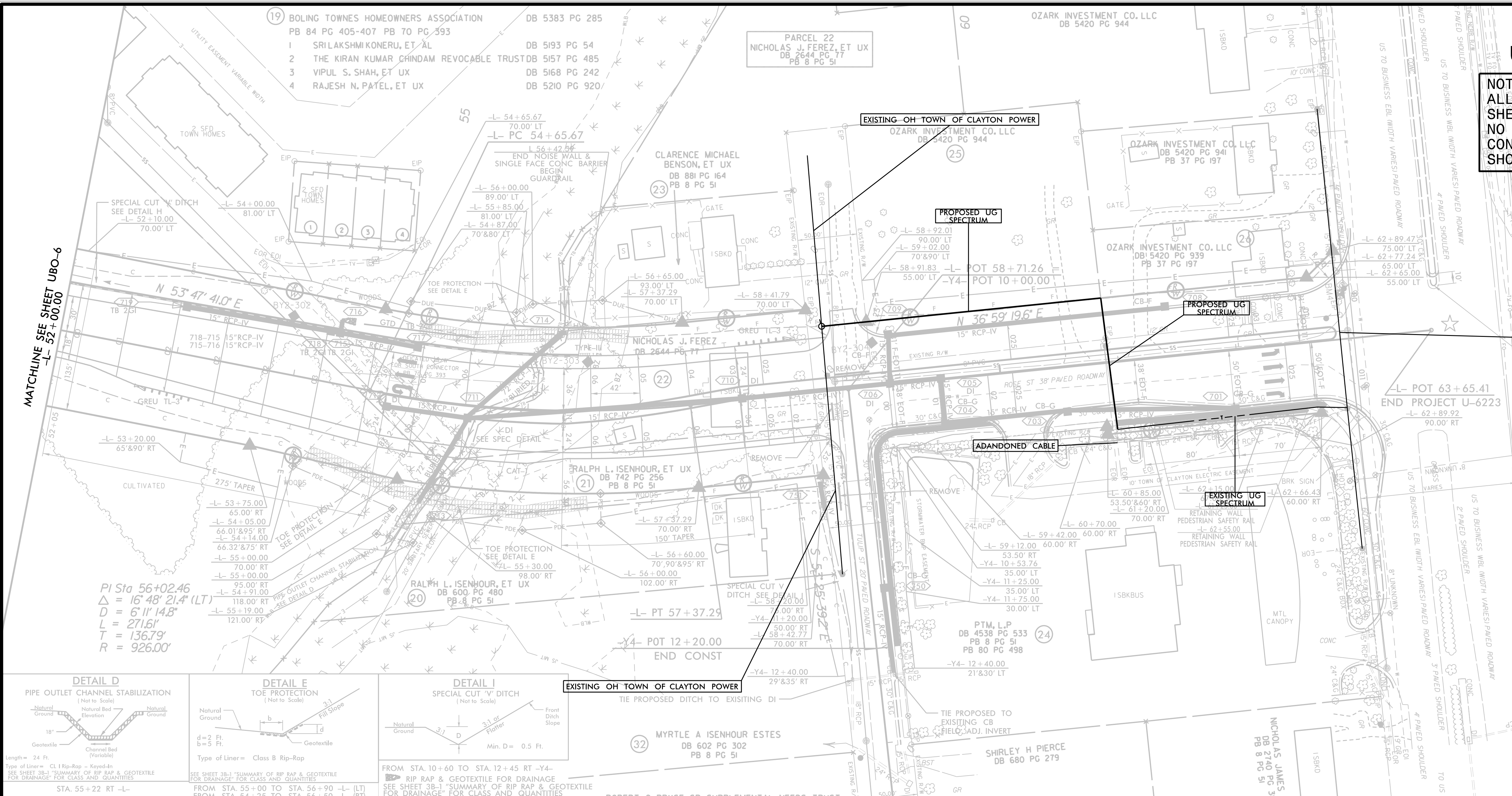




### UTILITIES BY OTHERS

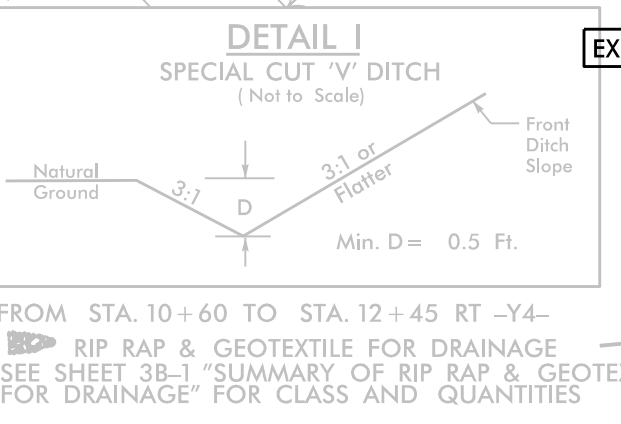
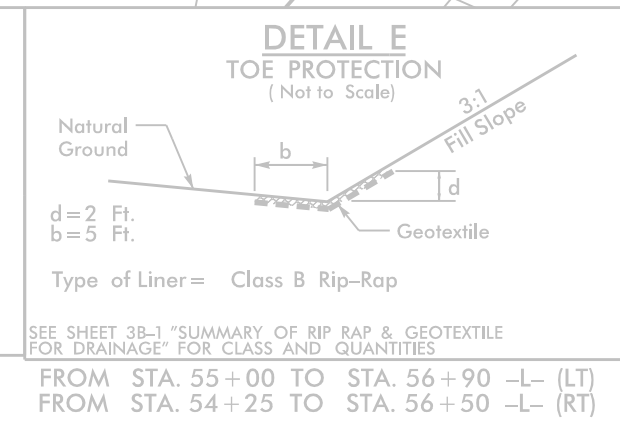
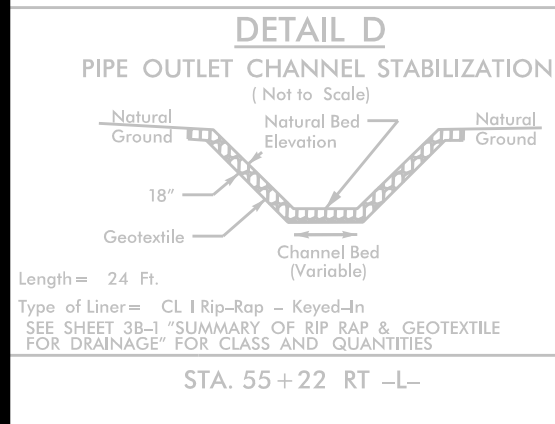
**NOTE:**  
 ALL UTILITY WORK SHOWN ON THIS SHEET WILL BE DONE BY OTHERS. NO PAYMENT WILL BE MADE TO THE CONTRACTOR FOR UTILITY WORK SHOWN ON THIS SHEET.

SEE SHEET 9 FOR PROFILE OF -Y4-  
 SHEET 21G-4.0 - SIG-4.2 FOR SIGNAL PLANS  
 SHEET 23-1 FOR NOISE WALL ENVELOPE  
 SHEET NW-1 - NW-3 FOR NOISE WALL PLANS  
 SEE SHEET W-1 - W-3 FOR RETAINING WALL PLANS



MATCHLINE SEE SHEET UBO-6  
 L- 52+00.00

PI Sta 56+02.46  
 $\Delta = 16' 48'' 21.4'' (LT)$   
 $D = 6' 11'' 14.8''$   
 $L = 271.61'$   
 $T = 136.79'$   
 $R = 926.00'$



REMOVE & REPLACE 2.5' C&G REPAIR PAVEMENT

REVISIONS

2022 ADT	401	US-70
2045 ADT	542	
ADT IN 100'S		
ROSE ST	12/46	200/216
		NC-42
		261/442
28/187	6/26	51/111
	246/417	US-70

★ REVISED SIGNAL

5/14/2011