

TOWN OF CLAYTON DETAILS

PREPARED IN THE OFFICE OF:

Wooten

120 North Boylan Avenue Raleigh, NC 27603-1423
919.828.0531 Fax 919.834.3559
License Number: F-0115

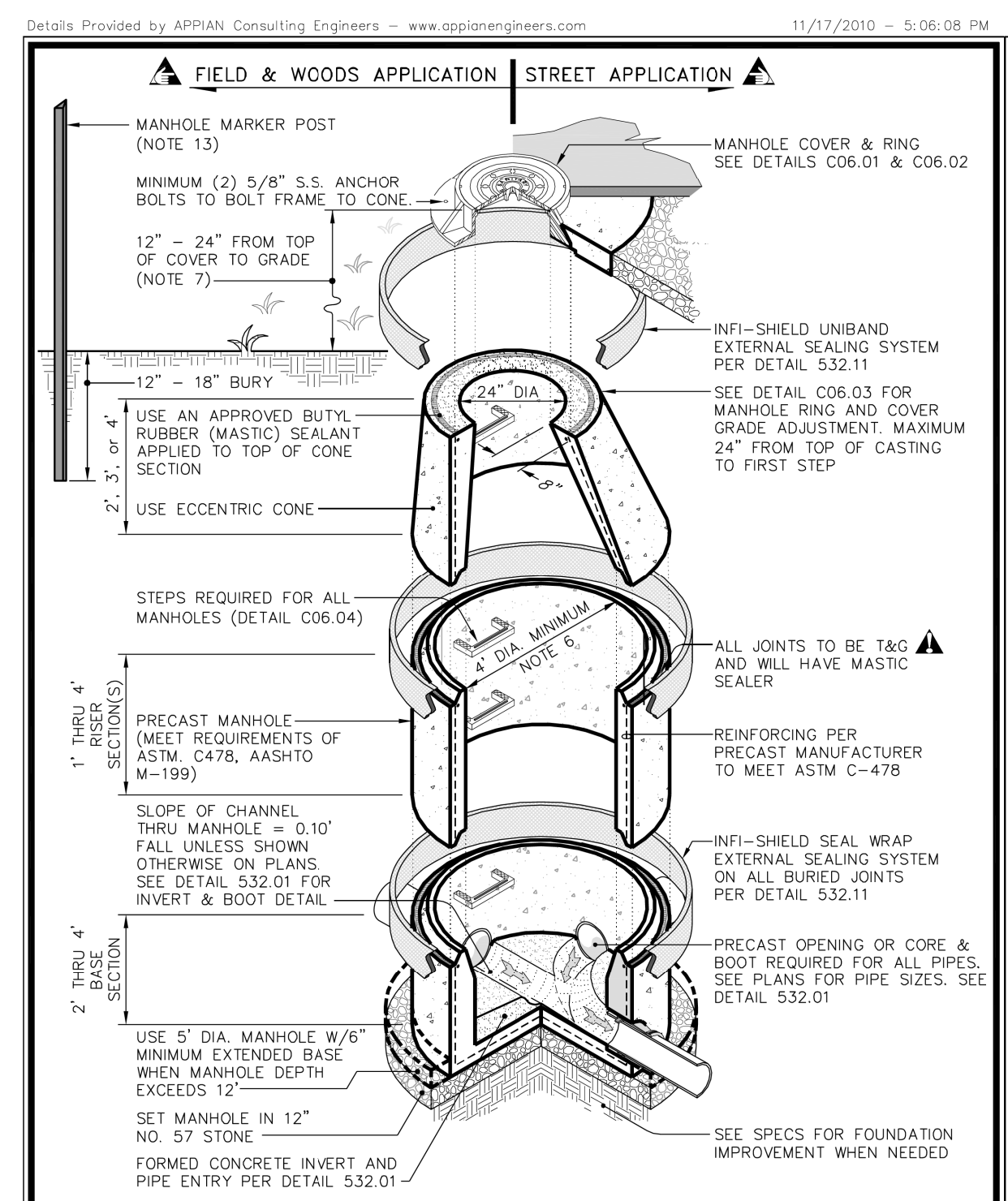
PROJECT REFERENCE NO. **U-6223** SHEET NO. **UC-3G**

DESIGNED BY: CMG
DRAWN BY: TK
CHECKED BY: DGM
APPROVED BY: CMG

REVIS: NORTH CAROLINA DEPARTMENT OF TRANSPORTATION
UTILITIES ENGINEERING SEC. PHONE: (919) 707-6690 FAX: (919) 250-4151

Document Not Considered Final Unless All Signatures Completed
UTILITY CONSTRUCTION PLANS ONLY

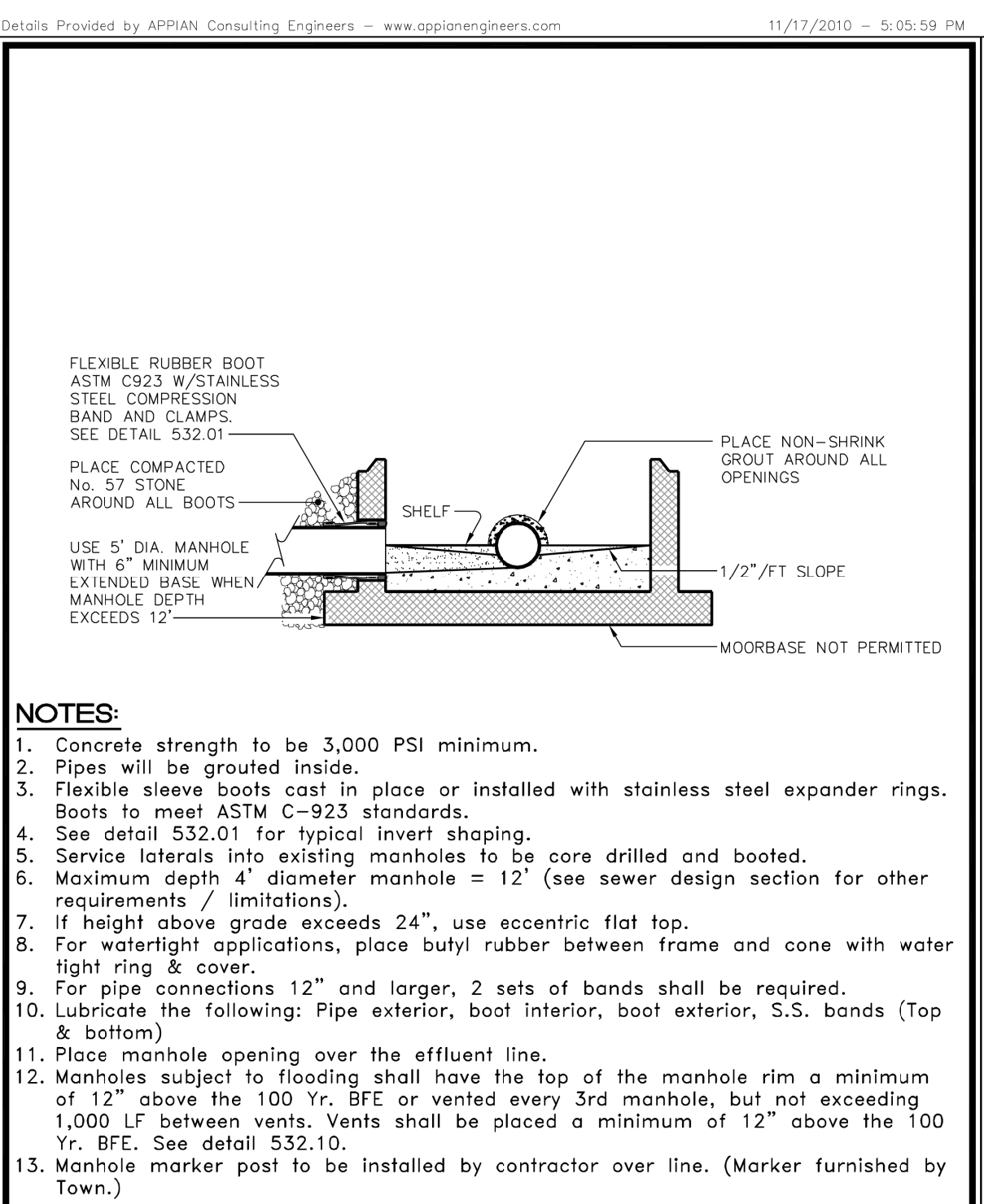
VERTICAL SCALE: 5' 0' 5' 10'
HORIZONTAL SCALE: 25' 0' 25' 50'



TOWN of CLAYTON
USE WITH THE TOWN OF CLAYTON STANDARD SPECIFICATIONS ONLY

STANDARD ECCENTRIC PRECAST MANHOLE DETAIL

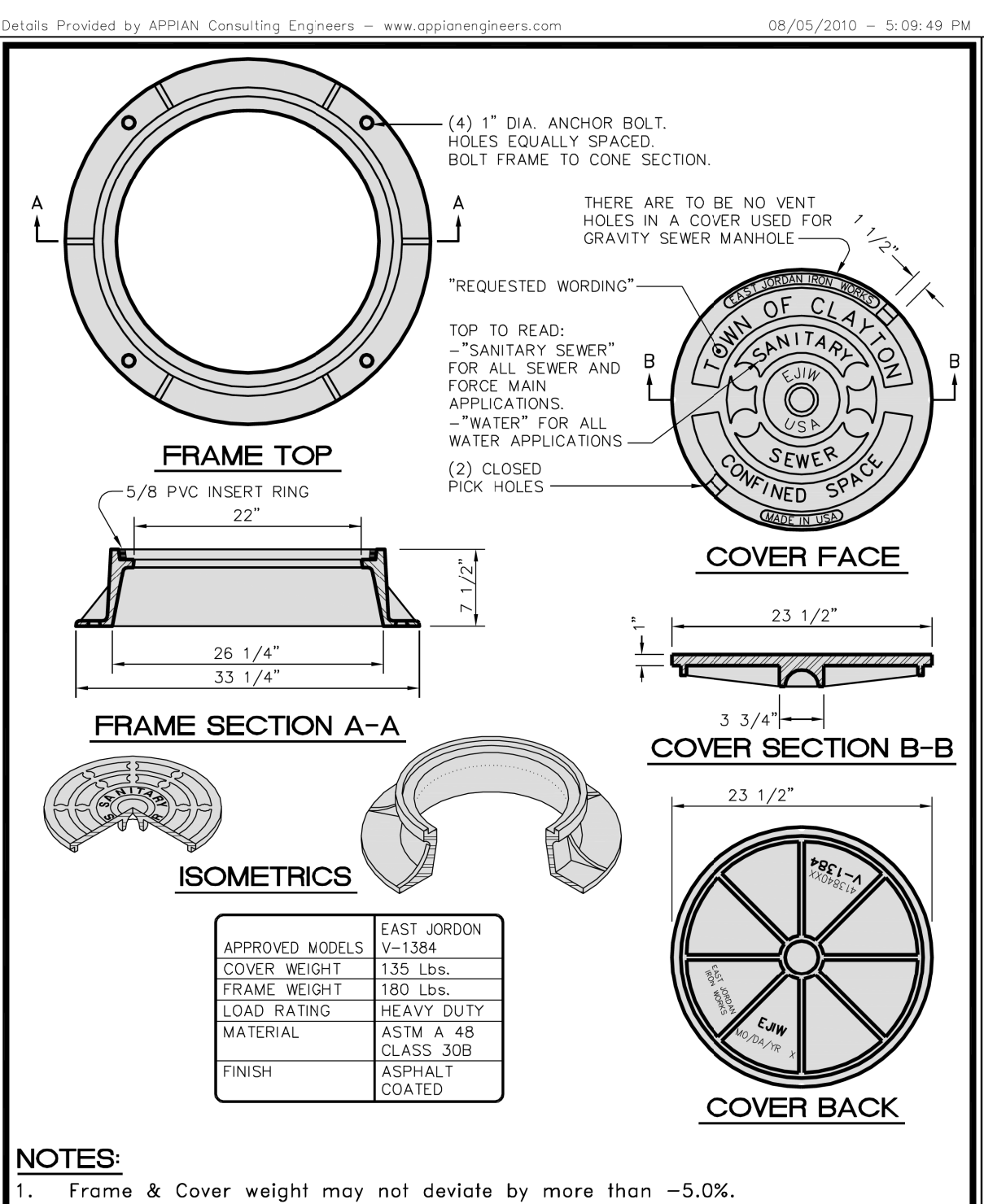
SCALE: Not To Scale
DETAIL # C06.03
REVISION DATE: July, 2010
SHEET # 1 of 2



TOWN of CLAYTON
USE WITH THE TOWN OF CLAYTON STANDARD SPECIFICATIONS ONLY

STANDARD ECCENTRIC PRECAST MANHOLE DETAIL

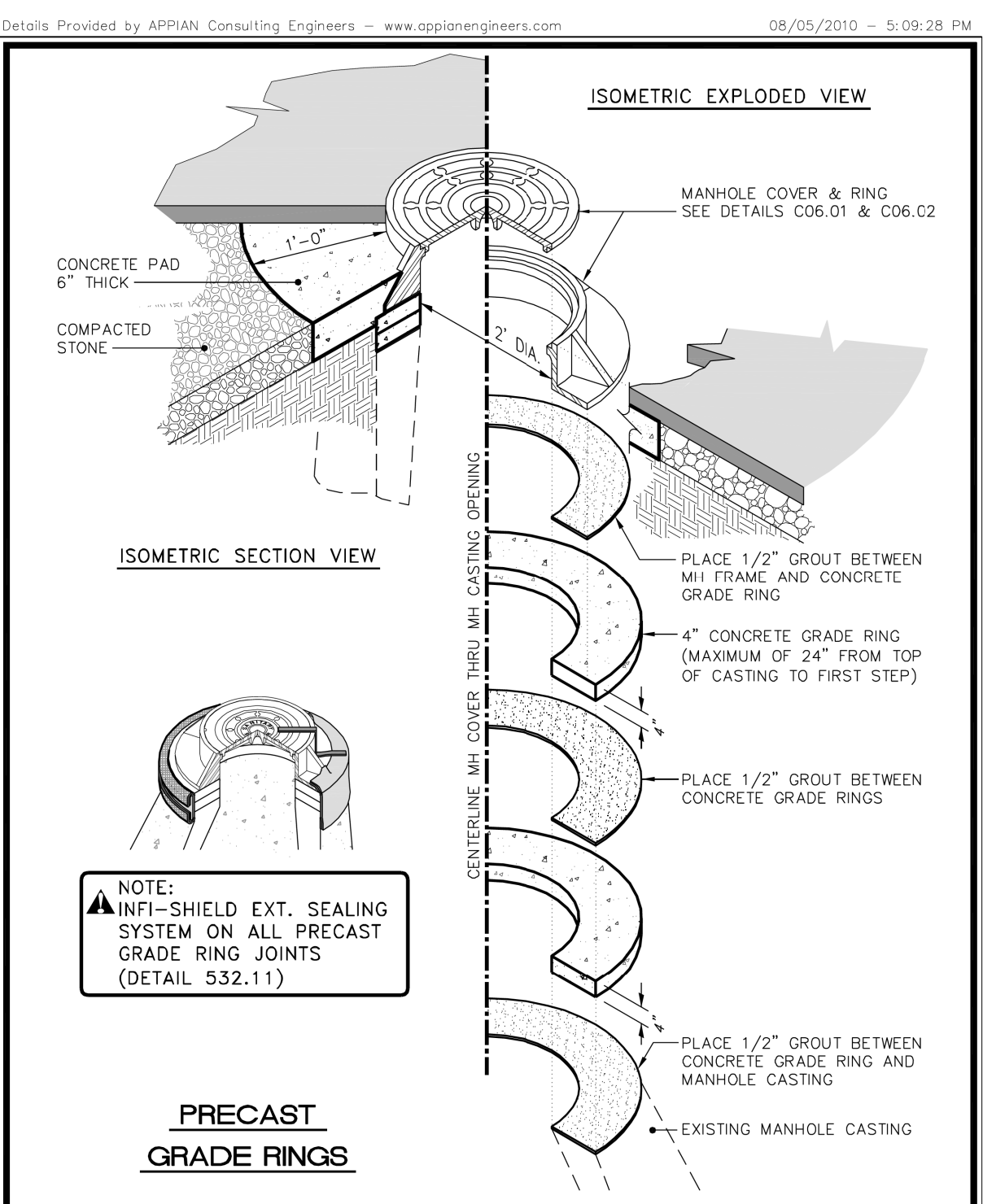
SCALE: Not To Scale
DETAIL # C06.03
REVISION DATE: July, 2010
SHEET # 2 of 2



TOWN of CLAYTON
USE WITH THE TOWN OF CLAYTON STANDARD SPECIFICATIONS ONLY

STANDARD MANHOLE FRAME and COVER

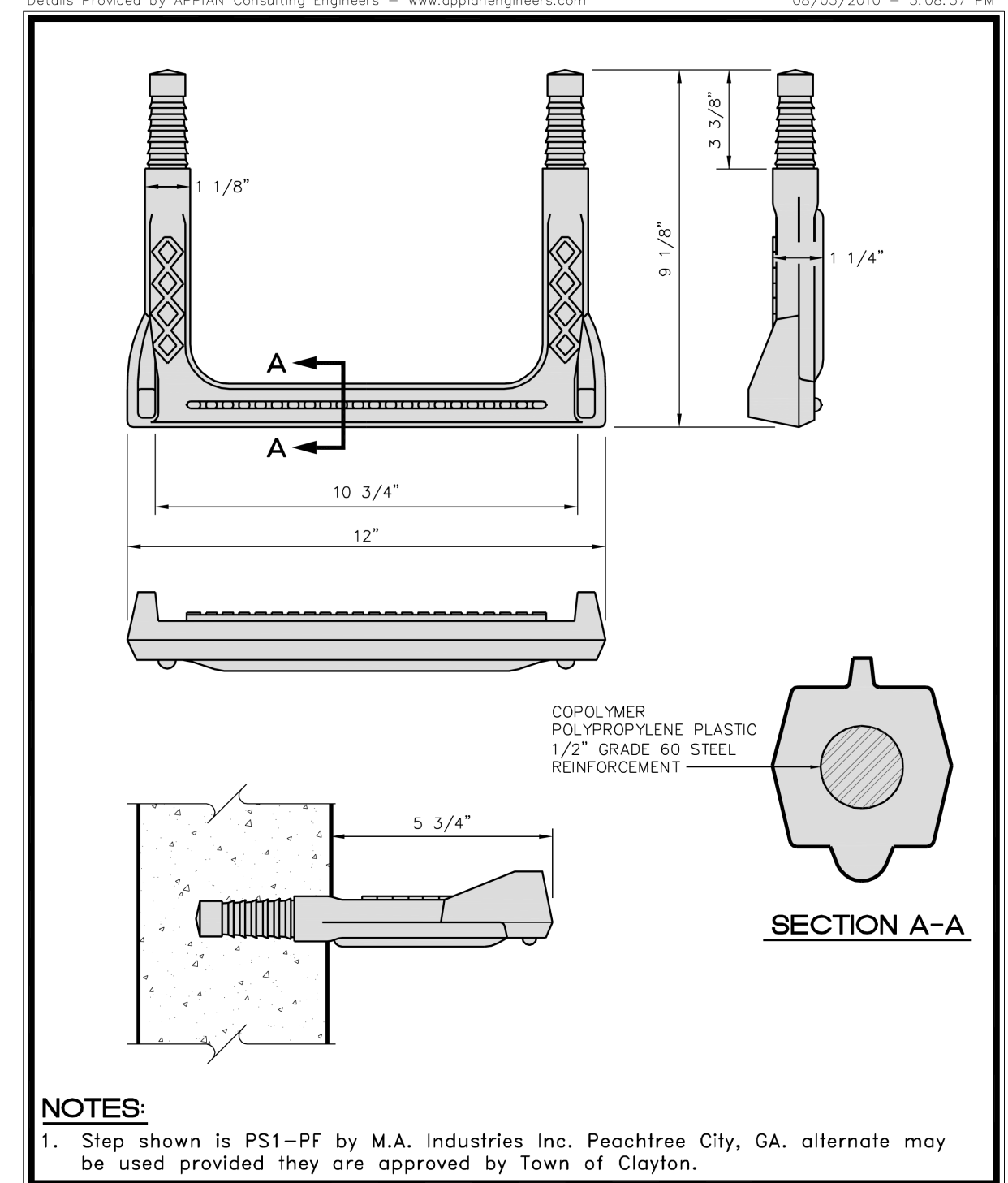
SCALE: Not To Scale
DETAIL # C06.01
REVISION DATE: July, 2010
SHEET # 1 of 1



TOWN of CLAYTON
USE WITH THE TOWN OF CLAYTON STANDARD SPECIFICATIONS ONLY

MANHOLE RING AND COVER GRADE ADJUSTMENT

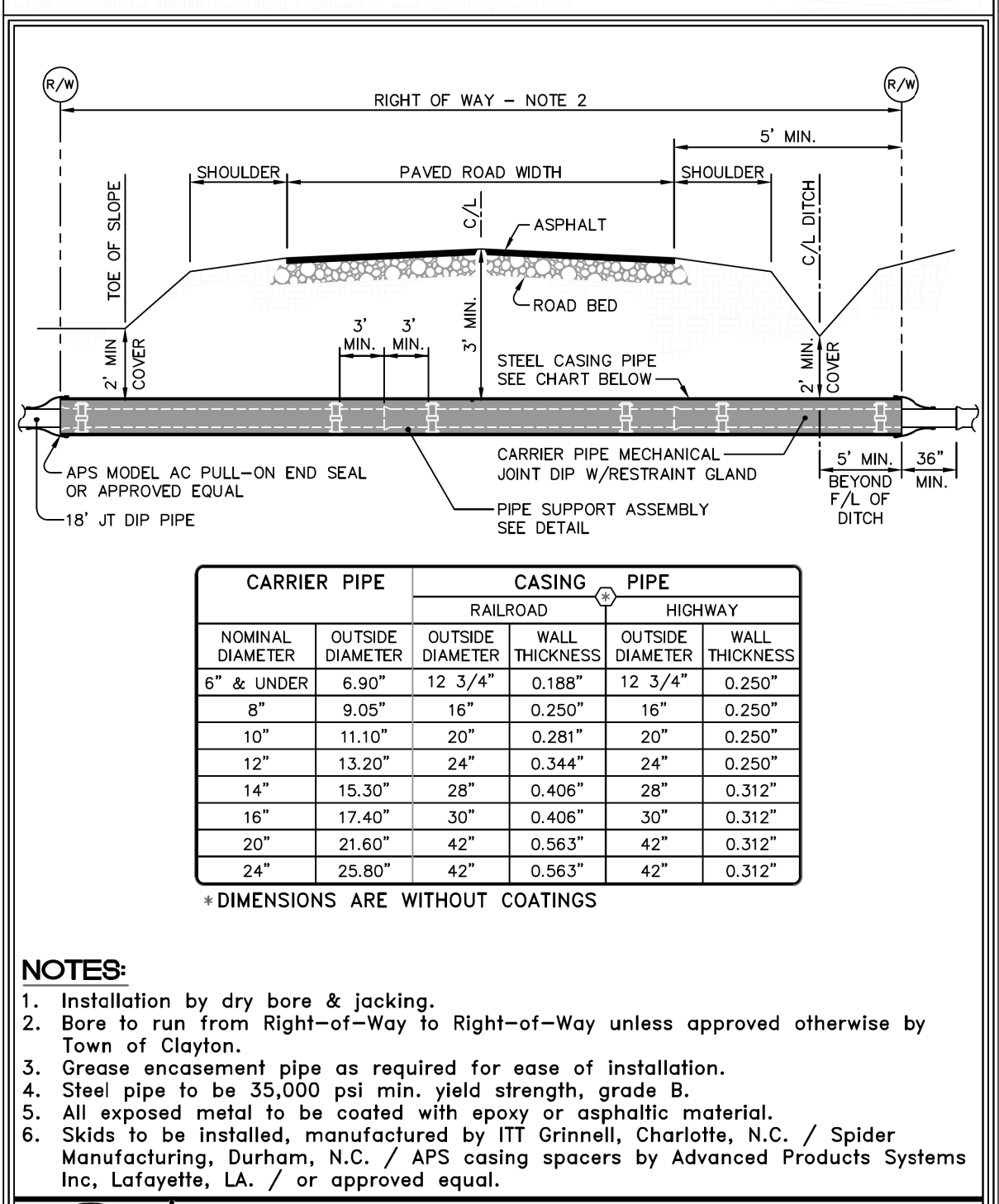
SCALE: Not To Scale
DETAIL # C06.03
REVISION DATE: July, 2010
SHEET # 1 of 1



TOWN of CLAYTON
USE WITH THE TOWN OF CLAYTON STANDARD SPECIFICATIONS ONLY

POLYPROPYLENE PLASTIC STEP

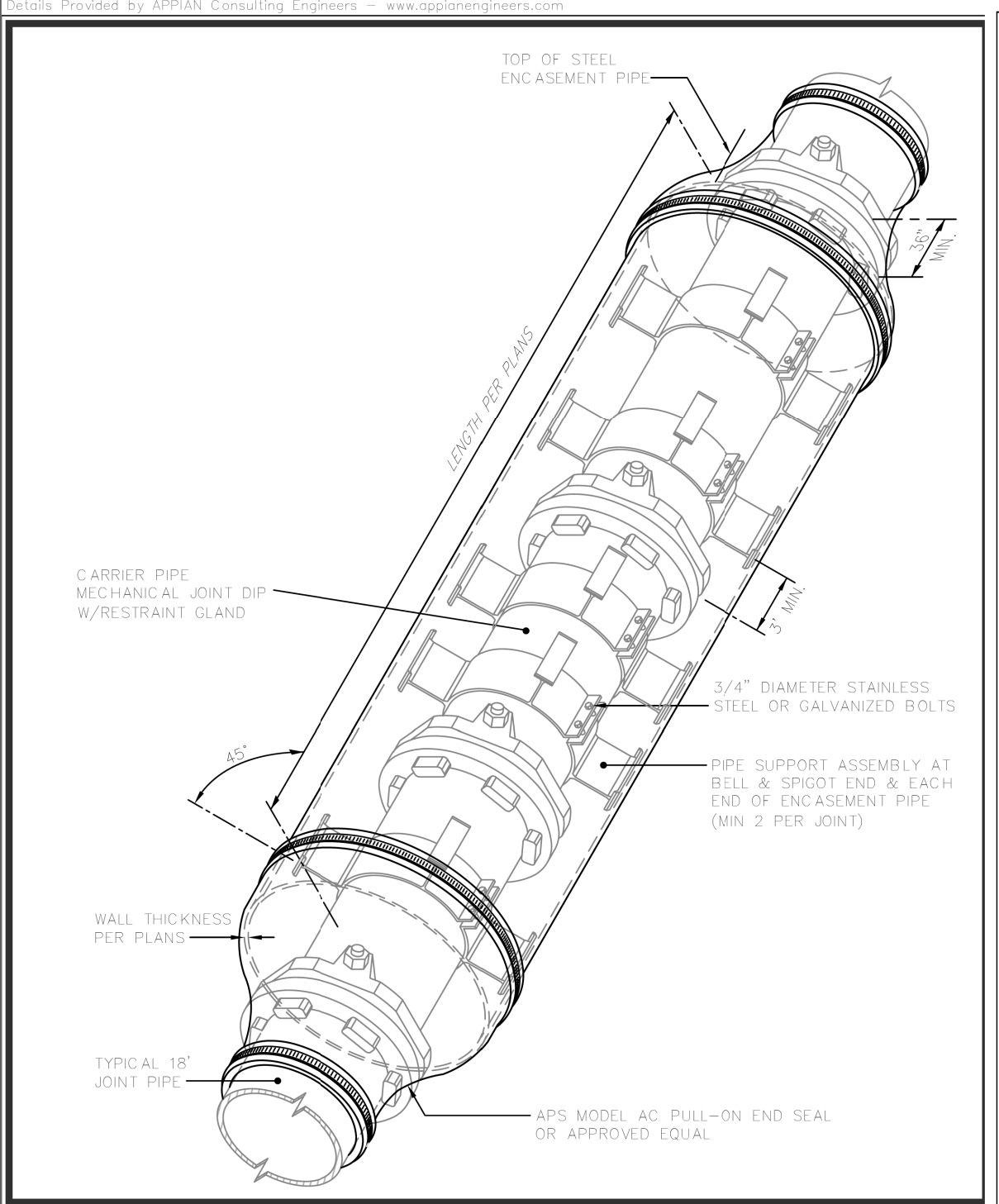
SCALE: Not To Scale
DETAIL # C06.04
REVISION DATE: July, 2010
SHEET # 1 of 1



TOWN of CLAYTON
USE WITH THE TOWN OF CLAYTON STANDARD SPECIFICATIONS ONLY

TYPICAL DETAIL for BORE UNDER PAVED ROADS / HIGHWAYS

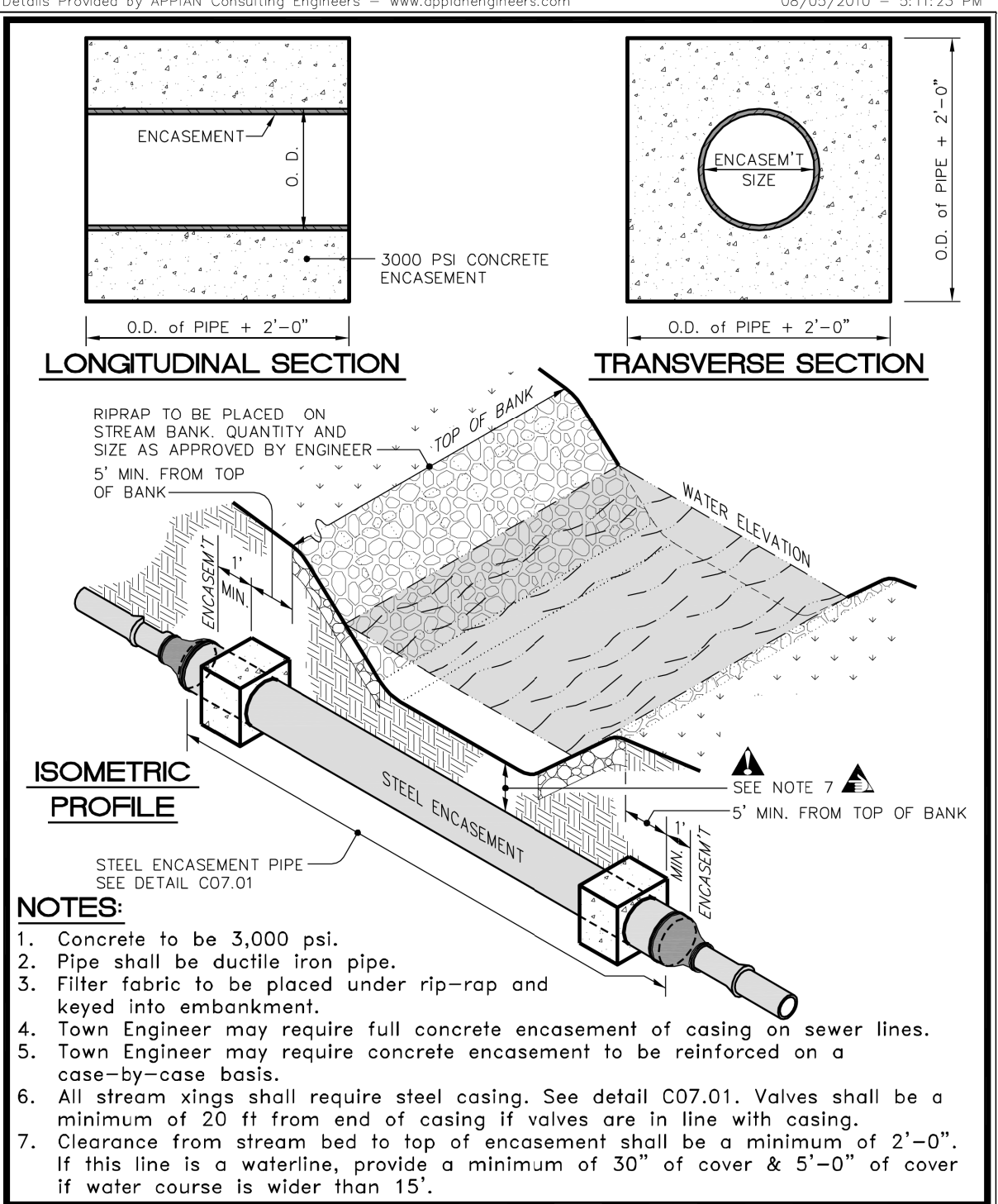
SCALE: Not To Scale
DETAIL # C07.01
REVISION DATE: July, 2010
SHEET # 1 of 2



TOWN of CLAYTON
USE WITH THE TOWN OF CLAYTON STANDARD SPECIFICATIONS ONLY

TYPICAL DETAIL for BORE UNDER PAVED ROADS / HIGHWAYS

SCALE: Not To Scale
DETAIL # C07.01
REVISION DATE: April, 2012
SHEET # 2 of 2



TOWN of CLAYTON
USE WITH THE TOWN OF CLAYTON STANDARD SPECIFICATIONS ONLY

STANDARD STREAM/CREEK CROSSING

SCALE: Not To Scale
DETAIL # C07.02
REVISION DATE: July, 2010
SHEET # 1 of 1