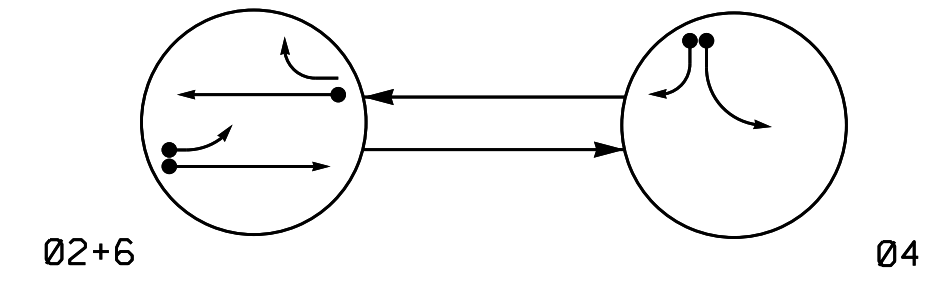


PHASING DIAGRAM

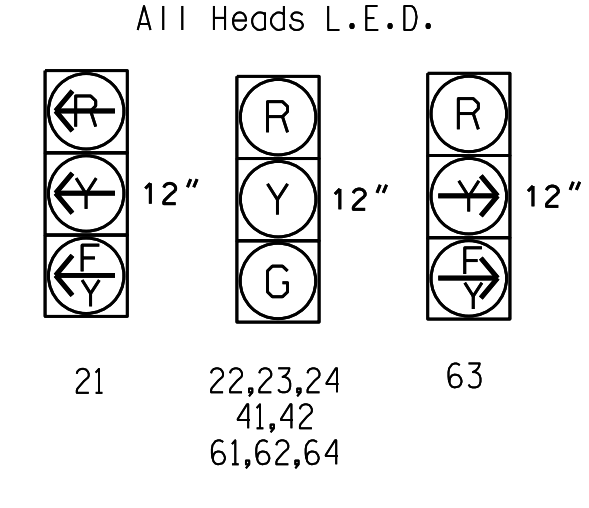


PHASING DIAGRAM DETECTION LEGEND
 ● DETECTED MOVEMENT
 ○ UNDETECTED MOVEMENT (OVERLAP)
 - - - UNSIGNALIZED MOVEMENT
 - - - PEDESTRIAN MOVEMENT

TABLE OF OPERATION

SIGNAL FACE	PHASE		
	S	O	F
21	F	R	Y
22,23,24	G	R	Y
41,42	R	G	R
61,62,64	G	R	Y
63	F	R	Y

SIGNAL FACE I.D.



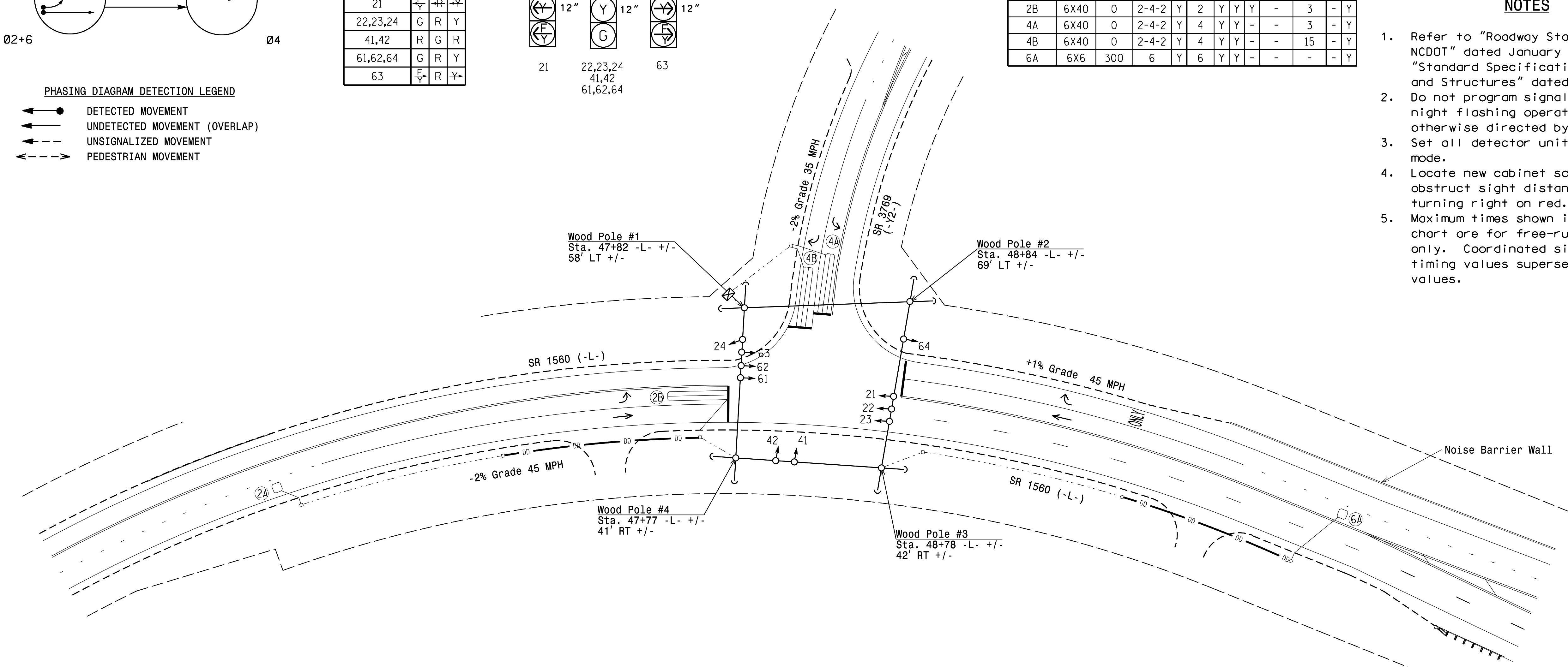
OASIS 2070 LOOP & DETECTOR INSTALLATION CHART

LOOP	SIZE (FT)	DISTANCE FROM STOPBAR (FT)	TURNS	DETECTOR PROGRAMMING								
				NEW LOOP	PHASE	CALLING	EXTENSION	FULL TIME DELAY	STRETCH TIME	DELAY TIME	SYSTEM LOOP	NEW CARD
2A	6X6	300	6	Y	2	Y	Y	-	-	-	-	Y
2B	6X40	0	2-4-2	Y	2	Y	Y	Y	-	3	-	Y
4A	6X40	0	2-4-2	Y	4	Y	Y	-	-	3	-	Y
4B	6X40	0	2-4-2	Y	4	Y	Y	-	-	15	-	Y
6A	6X6	300	6	Y	6	Y	Y	-	-	-	-	Y

2 Phase Fully Actuated
 US 70 Bus.-NC 42 (Clayton)
 D04-01_Clayton

NOTES

- Refer to "Roadway Standard Drawings NCDOT" dated January 2018 and "Standard Specifications for Roads and Structures" dated January 2018.
- Do not program signal for late night flashing operation unless otherwise directed by the Engineer.
- Set all detector units to presence mode.
- Locate new cabinet so as not to obstruct sight distance of vehicles turning right on red.
- Maximum times shown in timing chart are for free-run operation only. Coordinated signal system timing values supersede these values.

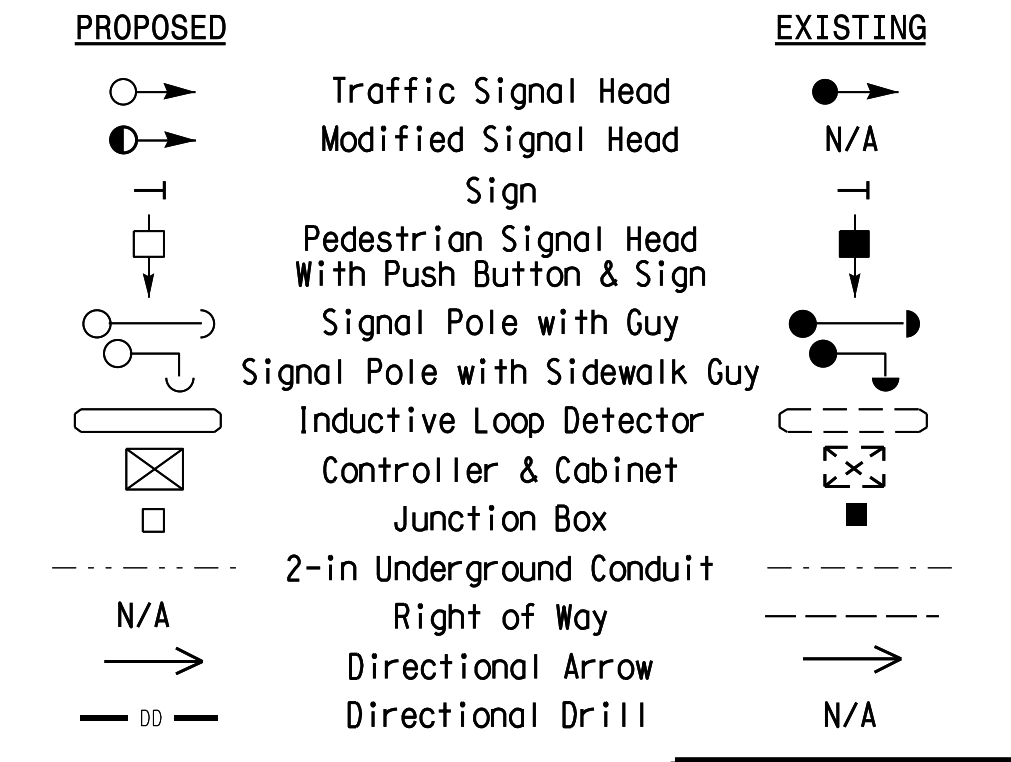


OASIS 2070 TIMING CHART

FEATURE	PHASE		
	2	4	6
Min Green 1 *	12	7	12
Extension 1 *	6.0	2.0	6.0
Max Green 1 *	90	30	90
Yellow Clearance	4.7	3.0	4.7
Red Clearance	1.3	2.4	1.3
Red Revert	2.0	2.0	2.0
Walk 1 *	-	-	-
Don't Walk 1	-	-	-
Seconds Per Actuation *	2.5	-	2.5
Max Variable Initial *	34	-	34
Time Before Reduction *	15	-	15
Time To Reduce *	30	-	30
Minimum Gap	3.0	-	3.0
Recall Mode	MIN RECALL	-	MIN RECALL
Vehicle Call Memory	YELLOW	-	YELLOW
Dual Entry	-	-	-
Simultaneous Gap	ON	ON	ON

* These values may be field adjusted. Do not adjust Min Green and Extension times for phases 2 and 6 lower than what is shown. Min Green for all other phases should not be lower than 4 seconds.

LEGEND



New Installation

Prepared in the Offices of:
 Transportation Mobility and Safety Solutions
 STATE OF NORTH CAROLINA
 DEPARTMENT OF TRANSPORTATION
 Signal Design Section

750 N. Greenfield Pkwy, Garner, NC 27529

SR 1560 (-L-) at SR 3769 (-Y2-)

Division 4 Johnston County Clayton
 PLAN DATE: January 2022 REVIEWED BY: ZML
 PREPARED BY: KGP, Jr. REVIEWED BY:

SCALE: 1" = 40'

REVISIONS: [Table with columns for REVISIONS, INIT., DATE]

DOCUMENT NOT CONSIDERED FINAL UNLESS ALL SIGNATURES COMPLETED

SEAL: NORTH CAROLINA PROFESSIONAL ENGINEER SEAL 030530 ZACHARY M. LITTLE

DATE: 3/25/2022
 DATE: [Signature]

SIG. INVENTORY NO. 04-1448

28-MAR-2022 14:32 S:\IT\GIS\WORK\1510\m01e\Signal_Design_Sect\on\Eastern_Reg\on\04\U-6223\K51\signal_3 - Zack Lock here\04-1448\041448_sig_den_2022.mxd.dgn kgp\redrn