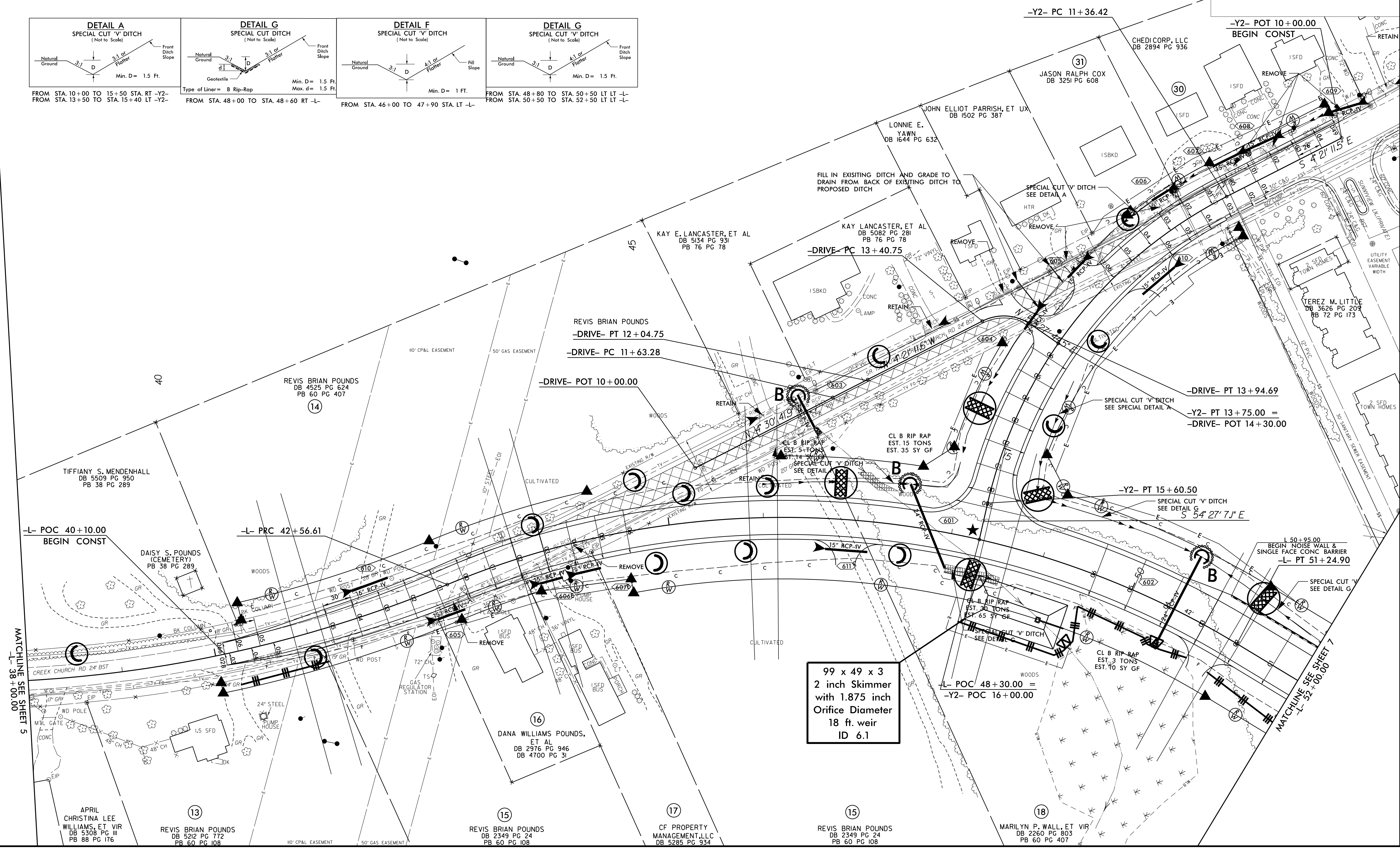
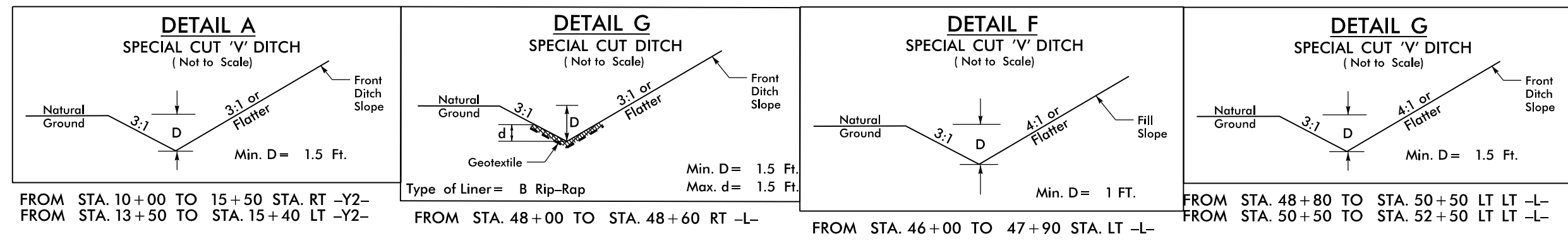


★ PROPOSED SIGNAL

Place Matting for Erosion Control on Slopes Adjacent to Permitted Wetlands as Work Allows.



PROJECT REFERENCE NO.	SHEET NO.
U-6223	EC-10/CONST.06
RW SHEET NO.	06
ROADWAY DESIGN ENGINEER	HYDRAULICS ENGINEER



99 x 49 x 3
2 inch Skimmer
with 1.875 inch
Orifice Diameter
18 ft. weir
ID 6.1

REVISIONS

14-MAR-2022 13:22
C:\Users\wchandler1\Documents\Division Jobs\Active\U-6223\01-21-2021\U-6223\EC\U-6223_EC_PSH06.dgn
\$\$\$\$\$USER\$NAME\$\$\$\$\$

MATCHLINE SEE SHEET 5
L-38+00.00

MATCHLINE SEE SHEET 7
L-52+00.00