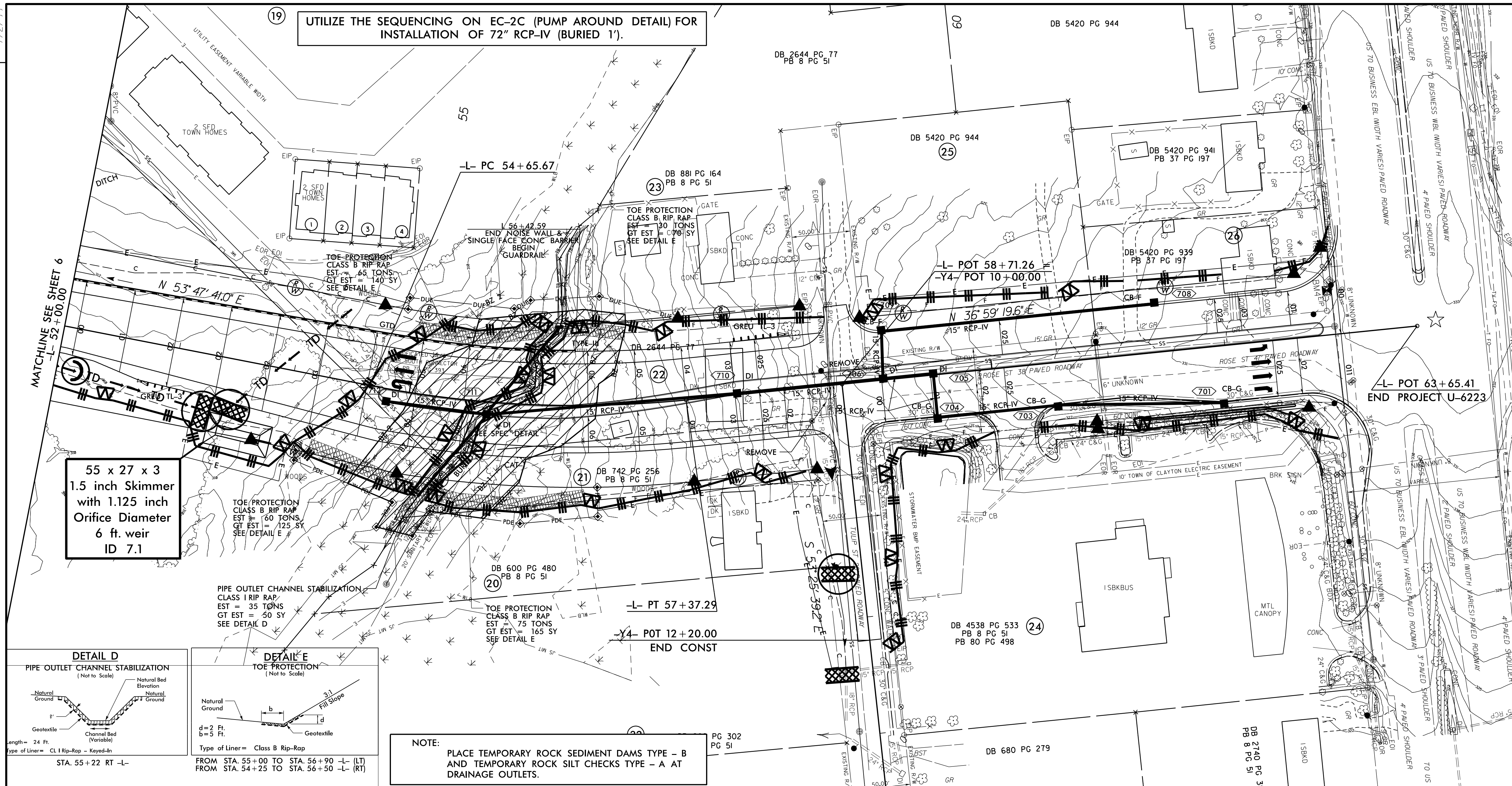
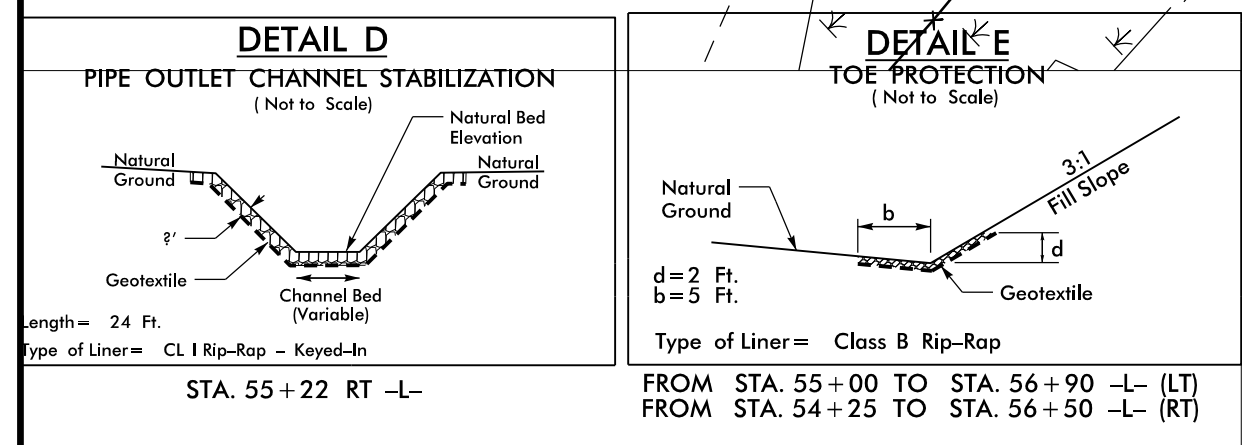


PROJECT REFERENCE NO.	SHEET NO.
U-6223	EC-07/CONST.07
RW SHEET NO.	07
ROADWAY DESIGN ENGINEER	HYDRAULICS ENGINEER

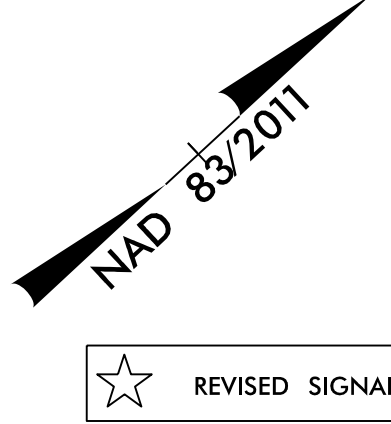


55 x 27 x 3
1.5 inch Skimmer
with 1.125 inch
Orifice Diameter
6 ft. weir
ID 7.1



NOTE: PLACE TEMPORARY ROCK SEDIMENT DAMS TYPE - B AND TEMPORARY ROCK SILT CHECKS TYPE - A AT DRAINAGE OUTLETS.

CLEARING AND GRUBBING EROSION CONTROL FOR CONSTRUCTION SHEET 7



REVISIONS

21-MAR-2022 11:19
C:\Users\wchandler1\Documents\Division Jobs\Active\U-6223\01-21-2021\U-6223\EC\U-6223_EC_PSH07_REV.dgn
04-21-2021 LINE -Y4- & TCE ADDED & TCE ADDED -L- 53+20 - 54+05 RT
07-29-2021 REVISE, SEWER EASEMENT FROM -Y2- 11+50+/- TO -L- 54+80+/-
11-03-2021 Add R/W To Parcel 24 From 60+85 to 62+66.43

