

MARK EDWARD PARKER, ET UX
DB 151 PG 348
PB 47 PG 204

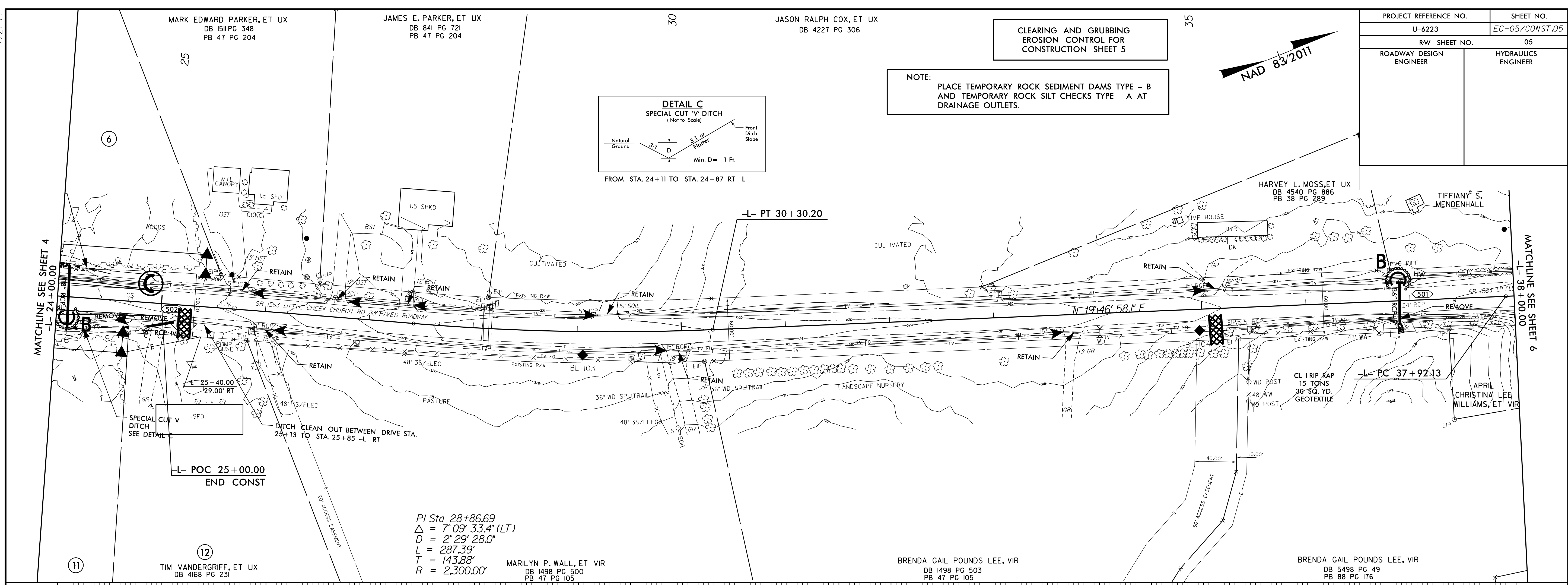
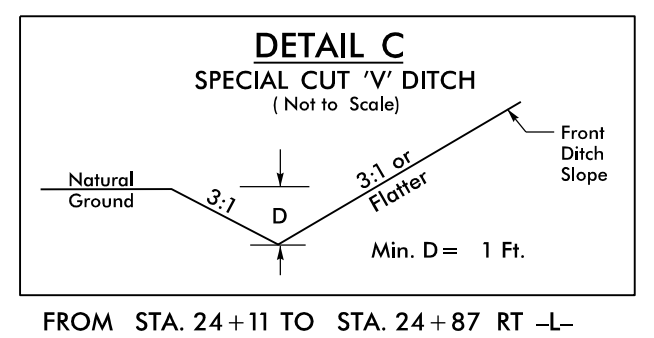
JAMES E. PARKER, ET UX
DB 841 PG 721
PB 47 PG 204

JASON RALPH COX, ET UX
DB 4227 PG 306

CLEARING AND GRUBBING
EROSION CONTROL FOR
CONSTRUCTION SHEET 5

PROJECT REFERENCE NO.	SHEET NO.
U-6223	EC-05/CONST.05
RW SHEET NO.	05
ROADWAY DESIGN ENGINEER	HYDRAULICS ENGINEER

NOTE:
PLACE TEMPORARY ROCK SEDIMENT DAMS TYPE - B
AND TEMPORARY ROCK SILT CHECKS TYPE - A AT
DRAINAGE OUTLETS.



MATCHLINE SEE SHEET 4
-L- 24+00.00

MATCHLINE SEE SHEET 6
-L- 38+00.00

-L- POC 25+00.00
END CONST

PI Sta 28+86.69
 $\Delta = 7^{\circ}09'33.4''$ (LT)
 $D = 2^{\circ}29'28.0''$
 $L = 287.39'$
 $T = 143.88'$
 $R = 2,300.00'$

TIM VANDERGRIFF, ET UX
DB 4168 PG 231

MARILYN P. WALL, ET VIR
DB 1498 PG 500
PB 47 PG 105

BRENDA GAIL POUNDS LEE, VIR
DB 1498 PG 503
PB 47 PG 105

BRENDA GAIL POUNDS LEE, VIR
DB 5498 PG 49
PB 88 PG 176

