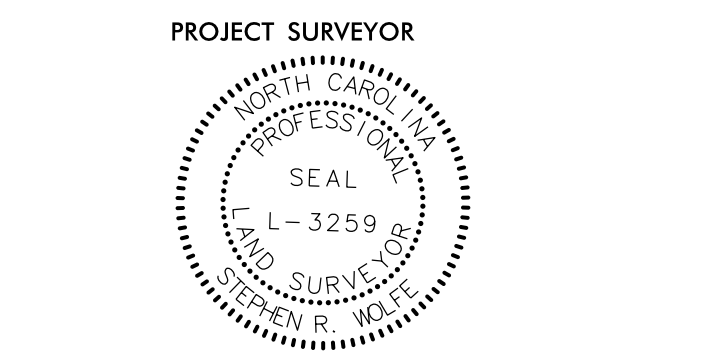


### Location and Surveys

JoynerKeeny, PLLC  
 1051 N. Winstead Avenue  
 Rocky Mount, NC 27804  
 252-977-3124  
 North Carolina Firm Number P-0551

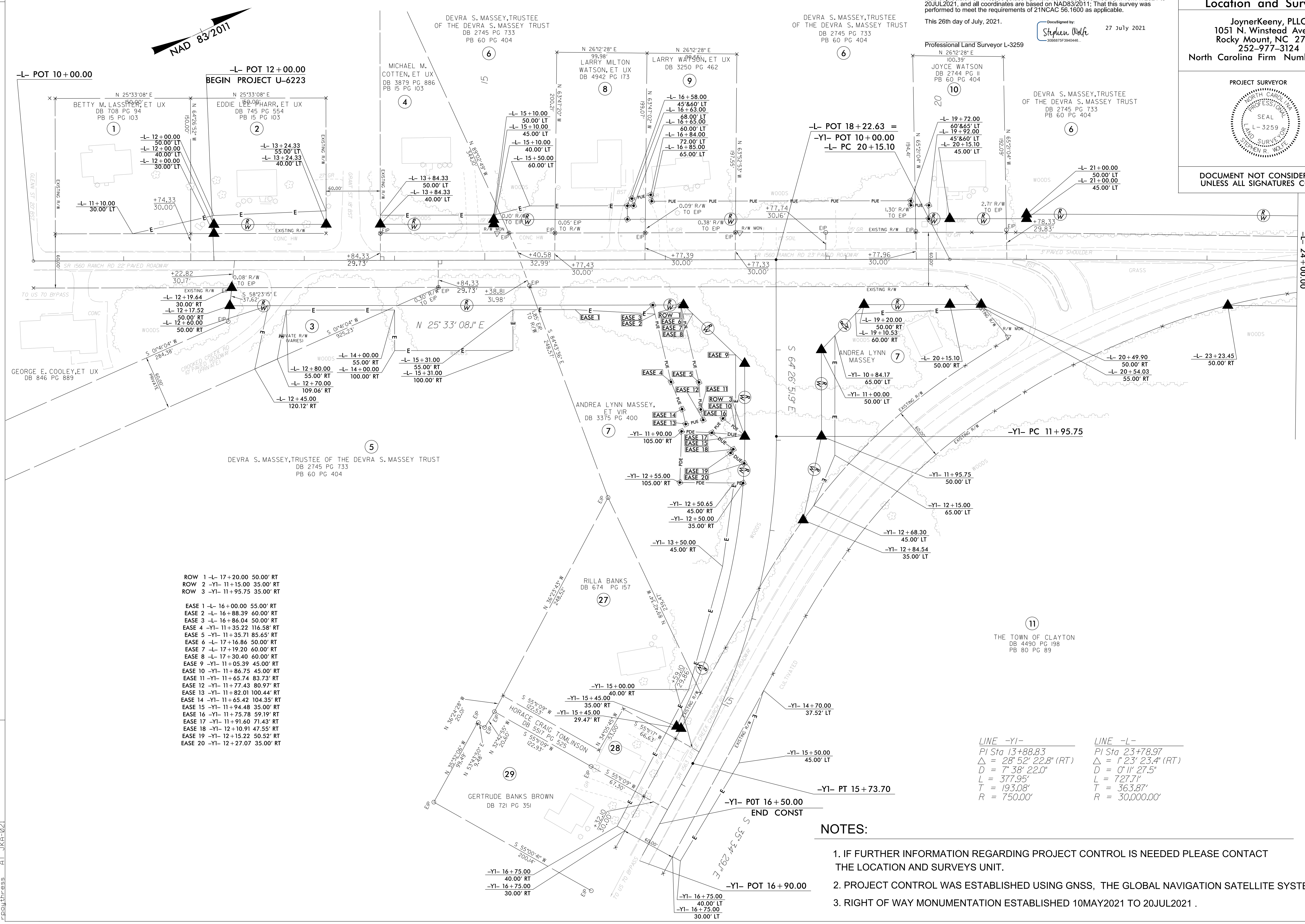


DOCUMENT NOT CONSIDERED FINAL  
 UNLESS ALL SIGNATURES COMPLETED

I, Stephen R. Wolfe, certify that the right of way and permanent easement monumentation for this project shown herein was completed under my direct and responsible charge from an actual survey made under my supervision; that all horizontal closures had a minimum ratio of precision of 1:10,000 (Class A). Field work was performed from 10MAY2021 to 20JUL2021, and all coordinates are based on NAD83/2011; That this survey was performed to meet the requirements of 21NCA6 56.1600 as applicable.

This 26th day of July, 2021.

Declassified by:  
 Stephen Wolfe  
 3006675940446  
 27 July 2021



- ROW 1 -L- 17+20.00 50.00' RT  
 ROW 2 -Y1- 11+15.00 35.00' RT  
 ROW 3 -Y1- 11+95.75 35.00' RT
- EASE 1 -L- 16+00.00 55.00' RT  
 EASE 2 -L- 16+88.39 60.00' RT  
 EASE 3 -L- 16+86.04 50.00' RT  
 EASE 4 -Y1- 11+35.22 116.58' RT  
 EASE 5 -Y1- 11+35.71 85.65' RT  
 EASE 6 -L- 17+16.86 50.00' RT  
 EASE 7 -L- 17+19.20 60.00' RT  
 EASE 8 -L- 17+30.40 60.00' RT  
 EASE 9 -Y1- 11+05.39 45.00' RT  
 EASE 10 -Y1- 11+86.75 45.00' RT  
 EASE 11 -Y1- 11+65.74 83.73' RT  
 EASE 12 -Y1- 11+77.43 80.97' RT  
 EASE 13 -Y1- 11+82.01 100.44' RT  
 EASE 14 -Y1- 11+65.42 104.35' RT  
 EASE 15 -Y1- 11+94.48 35.00' RT  
 EASE 16 -Y1- 11+75.78 59.19' RT  
 EASE 17 -Y1- 11+91.60 71.43' RT  
 EASE 18 -Y1- 12+10.91 47.55' RT  
 EASE 19 -Y1- 12+15.22 50.52' RT  
 EASE 20 -Y1- 12+27.07 35.00' RT

LINE -Y1-  
 PI Sta 13+88.83  
 Δ = 28° 52' 22.8" (RT)  
 D = 7' 38" 22.0"  
 L = 377.95'  
 T = 193.08'  
 R = 750.00'

LINE -L-  
 PI Sta 23+78.97  
 Δ = 1° 23' 23.4" (RT)  
 D = 0' 11" 27.5"  
 L = 727.71'  
 T = 363.87'  
 R = 30,000.00'

### NOTES:

1. IF FURTHER INFORMATION REGARDING PROJECT CONTROL IS NEEDED PLEASE CONTACT THE LOCATION AND SURVEYS UNIT.
2. PROJECT CONTROL WAS ESTABLISHED USING GNSS, THE GLOBAL NAVIGATION SATELLITE SYSTEM.
3. RIGHT OF WAY MONUMENTATION ESTABLISHED 10MAY2021 TO 20JUL2021 .

REVISIONS

25-JUL-2021 05:52 202105300655C\_NCDOT\_U6223\_ROW\_04.dgn  
 25-JUL-2021 05:52 202105300655C\_NCDOT\_U6223\_ROW\_04.dgn  
 25-JUL-2021 05:52 202105300655C\_NCDOT\_U6223\_ROW\_04.dgn

MATCHLINE SEE SHEET 5  
 -L- 24+00.00