

PROJECT REFERENCE NO.	SHEET NO.
U-6223	07
ROADWAY DESIGN ENGINEER	HYDRAULICS ENGINEER
05/17/2022	05/17/2022

**DOCUMENT NOT CONSIDERED FINAL
UNLESS ALL SIGNATURES COMPLETED**

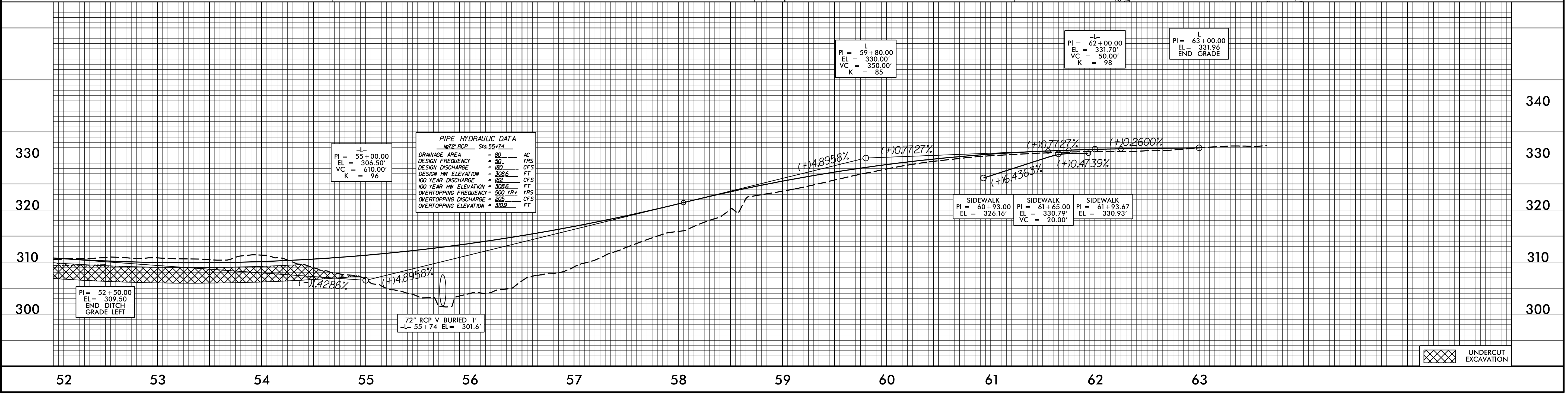
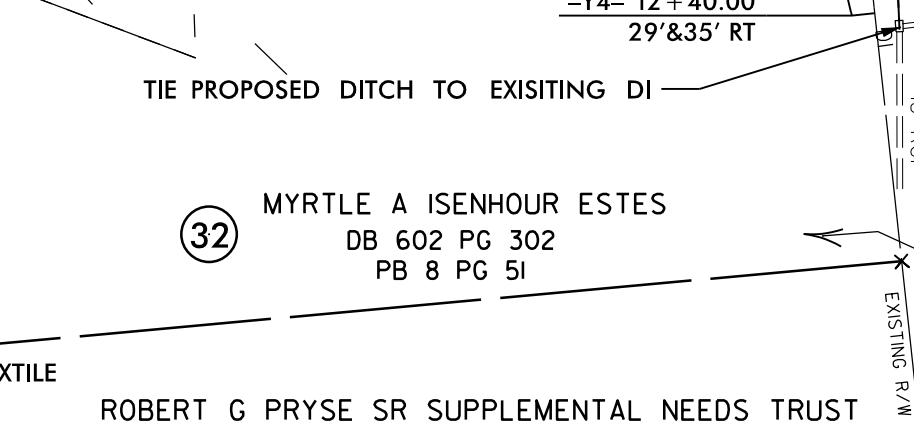
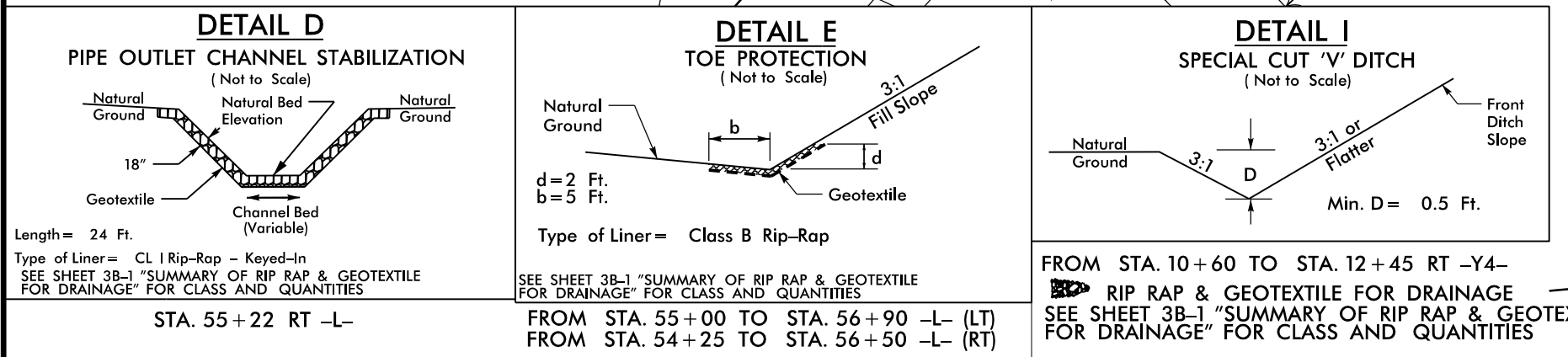
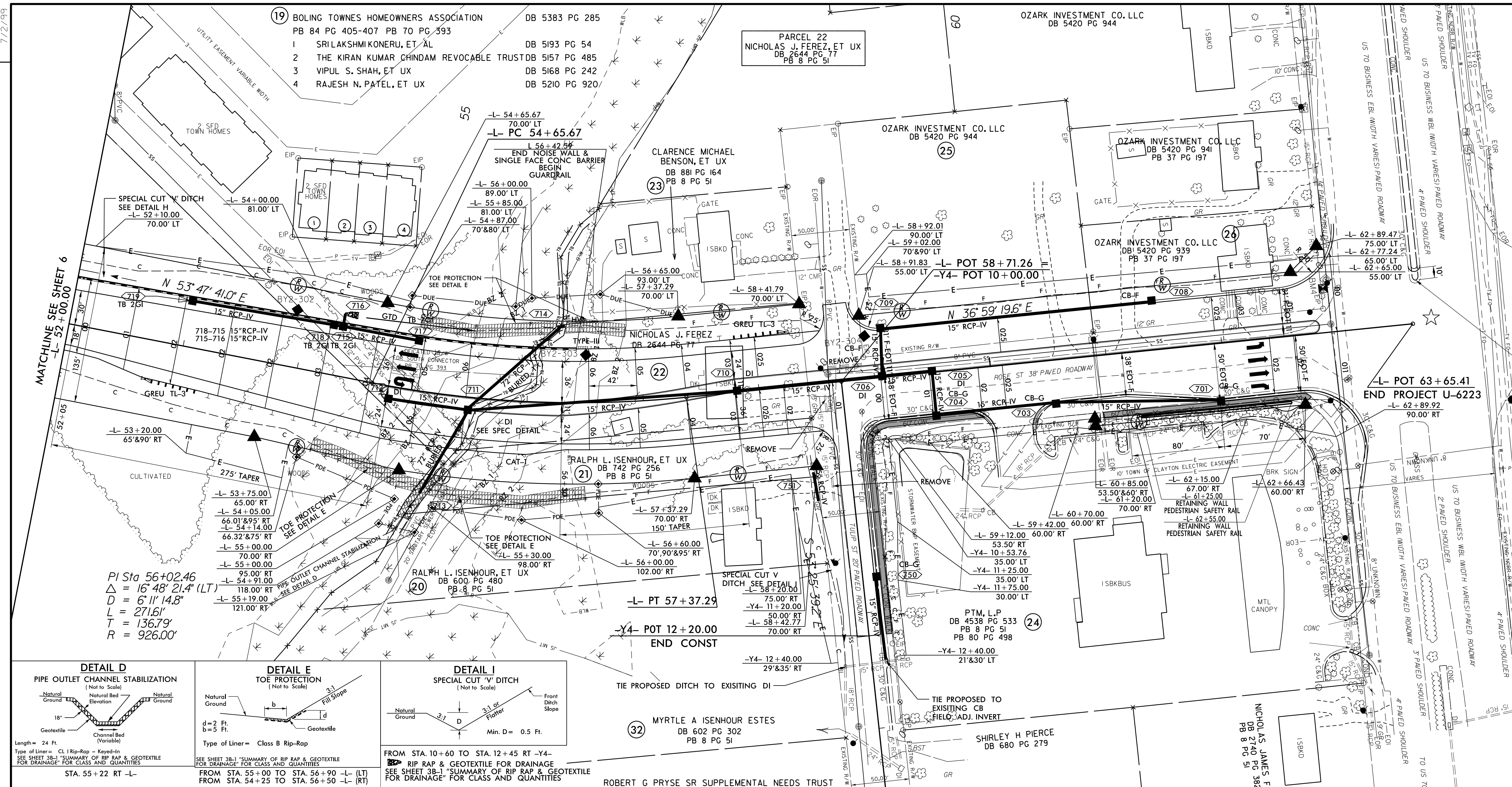
SEE SHEET 9 FOR PROFILE OF -Y4-
SEE SHEET 18G-4.0 - SIG-4.2 FOR SIGNAL PLANS
SEE SHEET 28-1 FOR NOISE WALL ENVELOPE
SEE SHEET NW-1 - NW-3 FOR NOISE WALL PLANS
SEE SHEET W-1 - W-3 FOR RETAINING WALL PLANS

NC 42 WB 44' PAVED ROADWAY
TO SR 1003 BUFFALO RD.
NC 42 EB 29' PAVED ROADWAY

REMOVED & REPLACE 2.5' C&G REPAIR PAVEMENT

★ REVISED SIGNAL

2022 ADT	401	US-70
2045 ADT	542	
ADT IN 100'S		
	12	200
	46	216
ROSE ST		NC-42
28	6	261
187	26	442
		51
		111
	246	US-70
	417	



PIPE HYDRAULIC DATA
RCP RCP - 36\"/>

DESIGN AREA	= 82	AC
DESIGN FREQUENCY	= 50	YRS
DESIGN DISCHARGE	= 180	CFS
DESIGN HW ELEVATION	= 308.6	FT
100 YEAR DISCHARGE	= 182	CFS
100 YEAR HW ELEVATION	= 308.6	FT
OVERTOPPING FREQUENCY	= 200	YRS
OVERTOPPING DISCHARGE	= 205	CFS
OVERTOPPING ELEVATION	= 309.2	FT

PI = 52+50.00
EL = 309.50
END DITCH GRADE LEFT

72\"/>

SIDEWALK PI = 60+93.00 EL = 326.16'
SIDEWALK PI = 61+65.00 EL = 330.79' VC = 20.00'
SIDEWALK PI = 61+93.67 EL = 330.93'

UNDERCUT EXCAVATION

REVISIONS

03-MAY-2022, 09:55
R:\PROJECTS\2022\U-6223_DDC4_PSH07.dgn
Division 4 DDC

DDC4

7/2/99