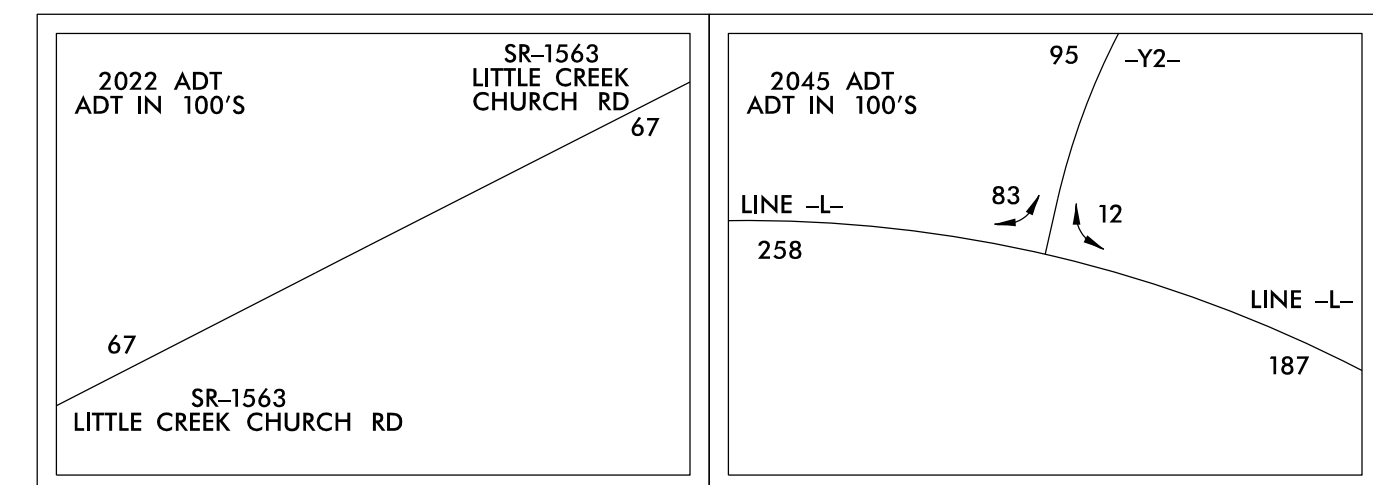


PROJECT REFERENCE NO.	SHEET NO.
U-6223	06
RW SHEET NO.	06
ROADWAY DESIGN ENGINEER	HYDRAULICS ENGINEER
05/17/2022	05/17/2022
SEAL 040774	SEAL 022000
PROFESSOR	PROFESSOR
ENGINEER	ENGINEER
NORWOOD GAINES	WILLIAM G. CAULFIELD
Norwood A. Gaines III	William G. Caulfield

DOCUMENT NOT CONSIDERED FINAL
UNLESS ALL SIGNATURES COMPLETED

★ PROPOSED SIGNAL

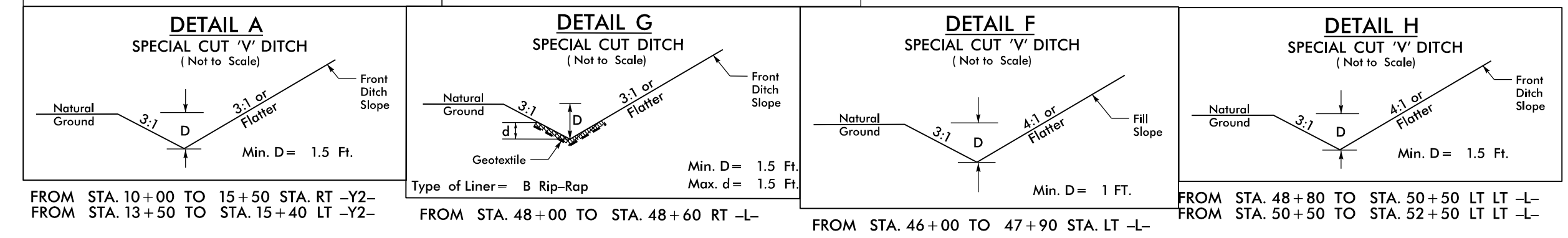


LINE -L-
 PI Sta 40+26.69 $\Delta = 19^\circ 42' 46.9''$ (LT)
 $D = 4' 14'' 38.9''$
 $L = 464.48'$
 $T = 234.56'$
 $R = 1,350.00'$

LINE -Y2-
 PI Sta 13+63.09 $\Delta = 50^\circ 05' 55.5''$ (LT)
 $D = 11' 48' 48.8''$
 $L = 424.08'$
 $T = 226.67'$
 $R = 485.00'$

LINE -DRIVE-
 PI Sta 11+84.02 $\Delta = 0^\circ 09' 30.3''$ (RT)
 $D = 0' 22' 55.1''$
 $L = 41.47'$
 $T = 20.74'$
 $R = 15,000.00'$

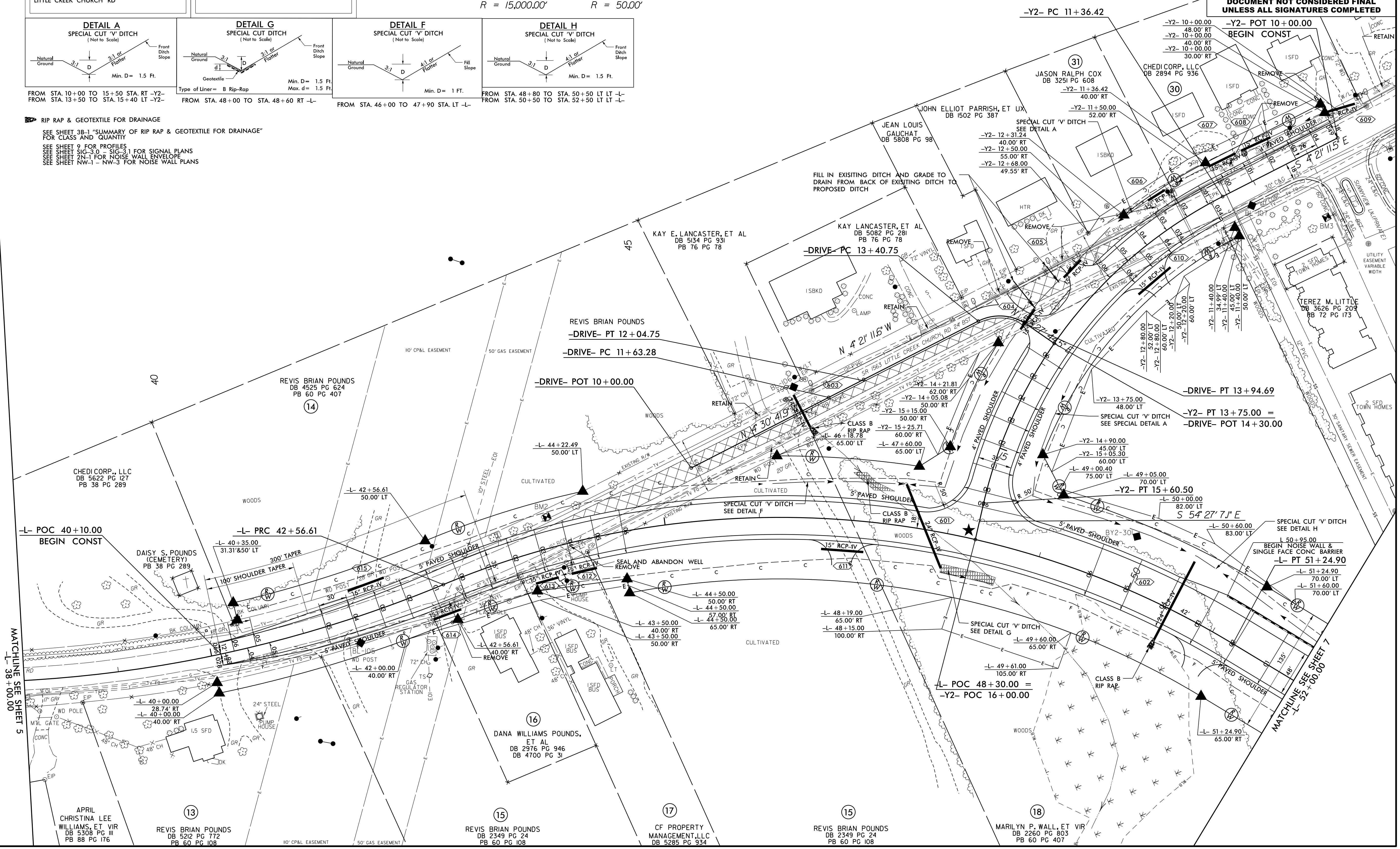
LINE -DRIVE-
 PI Sta 13+70.68 $\Delta = 61^\circ 48' 56.1''$ (RT)
 $D = 114' 35' 29.6''$
 $L = 53.94'$
 $T = 29.93'$
 $R = 50.00'$



● RIP RAP & GEOTEXTILE FOR DRAINAGE

SEE SHEET 3B-1 "SUMMARY OF RIP RAP & GEOTEXTILE FOR DRAINAGE" FOR CLASS AND QUANTITY
 SEE SHEET 9 FOR PROFILES
 SEE SHEET SIG-3.0 - SIG-3.1 FOR SIGNAL PLANS
 SEE SHEET 2N-1 FOR NOISE WALL ENVELOPE
 SEE SHEET NW-1 - NW-3 FOR NOISE WALL PLANS

REVISIONS



28 APR 2022 09:04
 R:\Projects\U-6223_DDC4_PSH06.dgn
 Division 4 DDC

MATCHLINE SEE SHEET 5
 -L- 38+00.00

MATCHLINE SEE SHEET 7
 -L- 52+00.00

APRIL CHRISTINA LEE WILLIAMS, ET VIR DB 5308 PG 113 PB 88 PG 176
 REVIS BRIAN POUNDS DB 5212 PG 772 PB 60 PG 108
 REVIS BRIAN POUNDS DB 4525 PG 624 PB 60 PG 407
 CHEDI CORP., LLC DB 5622 PG 127 PB 38 PG 289
 DAISY S. POUNDS (CEMETERY) PB 38 PG 289
 KAY E. LANCASTER, ET AL DB 5134 PG 931 PB 76 PG 78
 KAY LANCASTER, ET AL DB 5082 PG 281 PB 76 PG 78
 JOHN ELLIOTT PARRISH, ET UX DB 1502 PG 387
 JEAN LOUIS GAUCHAT DB 5808 PG 98
 JASON RALPH COX DB 3251 PG 608
 CHEDI CORP., LLC DB 2894 PG 936
 TEREZ M. LITTLE DB 3626 PG 205 PB 72 PG 175
 REVIS BRIAN POUNDS DB 4700 PG 31
 REVIS BRIAN POUNDS DB 2349 PG 24 PB 60 PG 108
 CF PROPERTY MANAGEMENT, LLC DB 5285 PG 934
 REVIS BRIAN POUNDS DB 2349 PG 24 PB 60 PG 108
 MARILYN P. WALL, ET VIR DB 2260 PG 803 PB 60 PG 407