

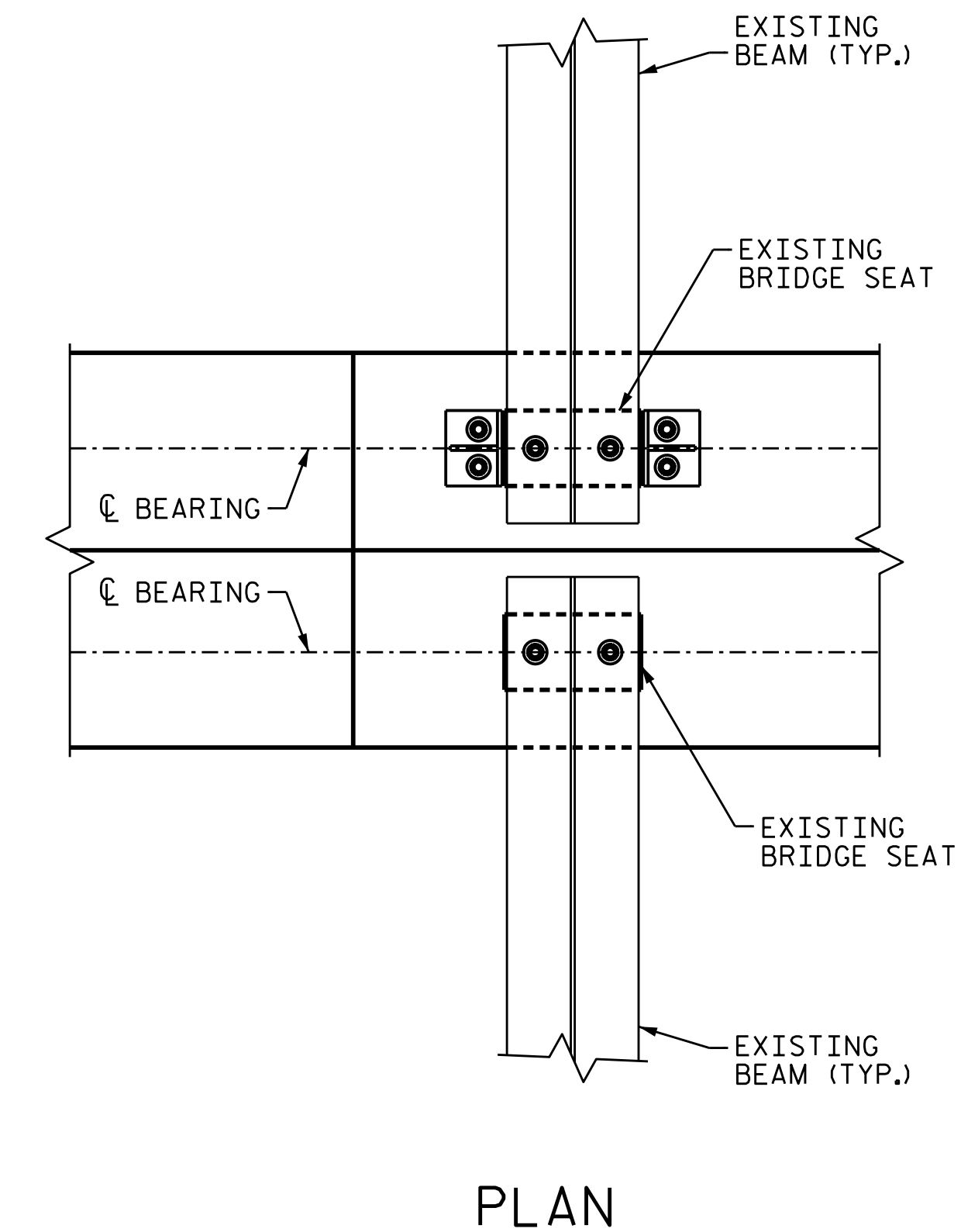
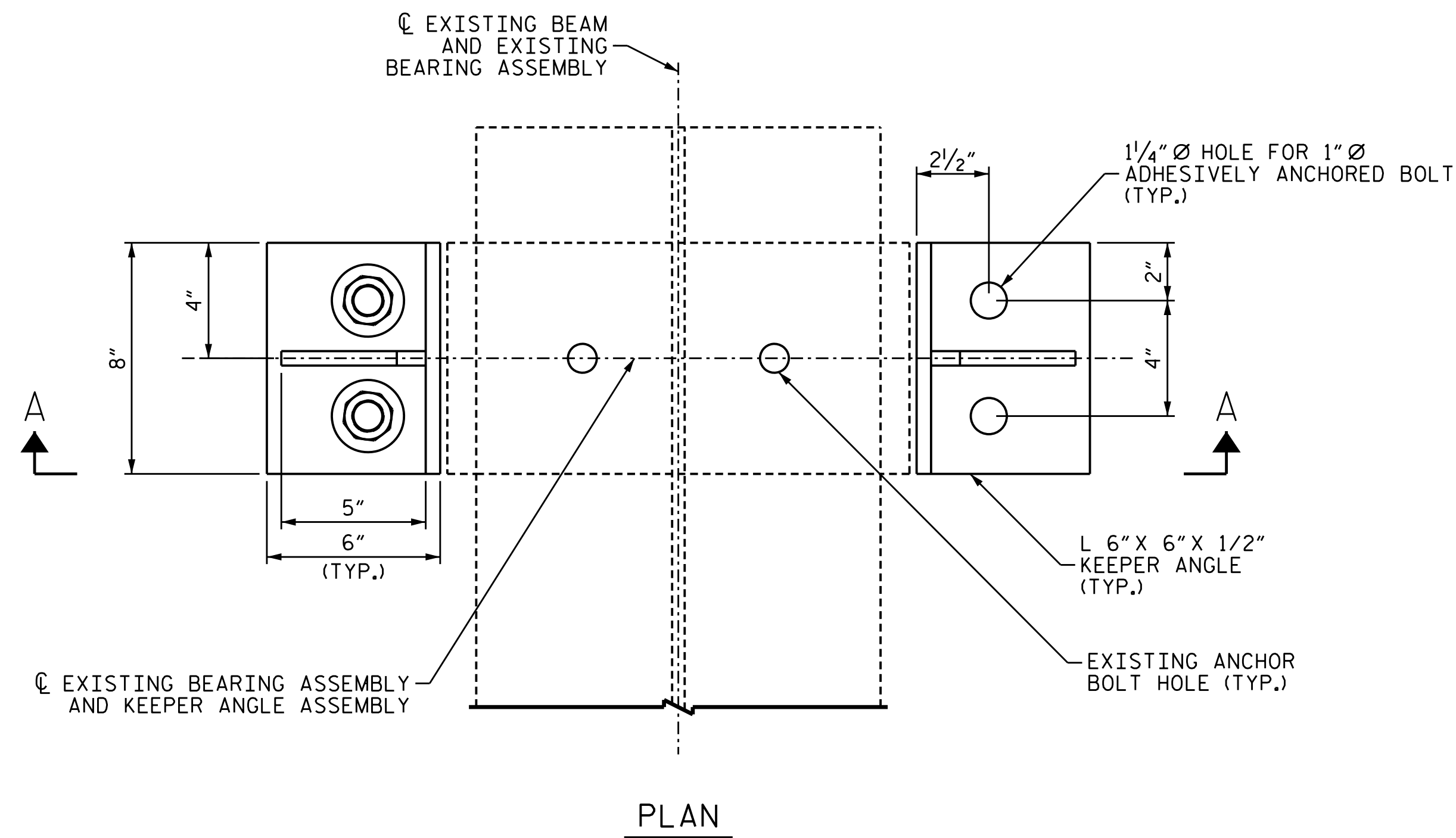
NOTES

STRUCTURAL STEEL SHALL BE AASHTO GRADE 36 OR GREATER.

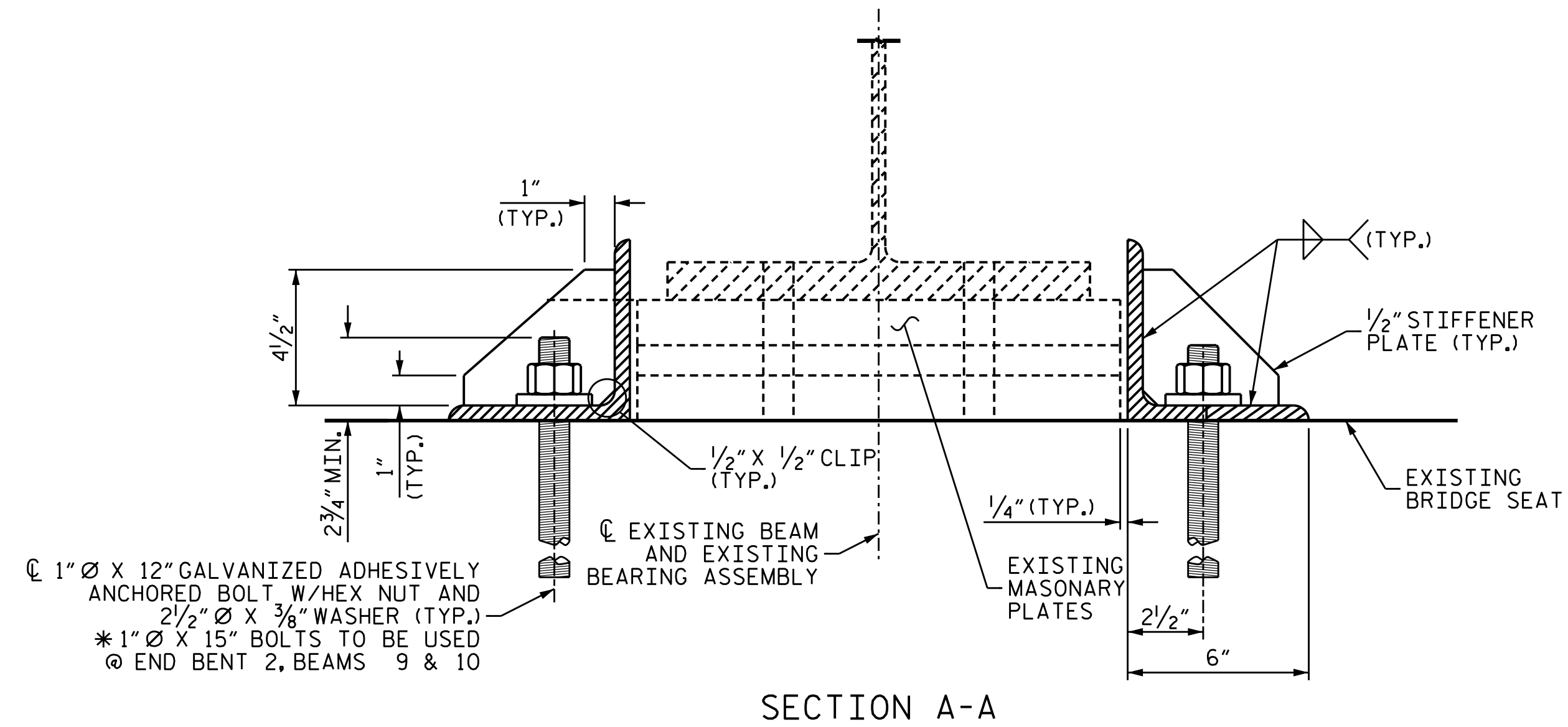
STRUCTURAL STEEL, ANCHOR BOLTS, NUTS AND WASHERS SHALL BE GALVANIZED IN ACCORDANCE WITH THE STANDARD SPECIFICATIONS.

ANCHOR BOLTS SHALL MEET THE REQUIREMENTS OF ASTM A449. NUTS SHALL MEET THE REQUIREMENTS OF AASHTO M291-DH OR AASHTO M292-2H. WASHERS SHALL MEET THE REQUIREMENTS OF AASHTO M293. SHOP DRAWINGS ARE NOT REQUIRED FOR ANCHOR BOLTS, NUTS AND WASHERS. SHOP INSPECTION IS REQUIRED.

ANCHOR BOLTS MAY BE ADHESIVELY ANCHORED, SEE STANDARD SPECIFICATIONS. NO FIELD TESTING REQUIRED.



USE KEEPER ANGLE IF NECESSARY, SHOWN AT BENT 4 BEAM 2 SPAN E.



C 1" O X 12" GALVANIZED ADHESIVELY ANCHORED BOLT W/HEX NUT AND 2 1/2" O X 3/8" WASHER (TYP.)
* 1" O X 15" BOLTS TO BE USED @ END BENT 2, BEAMS 9 & 10

STEEL KEEPER ANGLE ASSEMBLY DETAILS

PROJECT NO. 15BPR.47
NASH COUNTY
 BRIDGE NO. 630039



STATE OF NORTH CAROLINA
 DEPARTMENT OF TRANSPORTATION
 RALEIGH

STEEL KEEPER ANGLE ASSEMBLY DETAILS

DRAWN BY : A. Y. GODFREY DATE : 01/2022
 CHECKED BY : S. WANCE DATE : 03/2022

DOCUMENT NOT CONSIDERED FINAL UNLESS ALL SIGNATURES COMPLETED

REVISIONS						SHEET NO.
NO.	BY:	DATE:	NO.	BY:	DATE:	S3-32
1			3			TOTAL SHEETS
2			4			33