

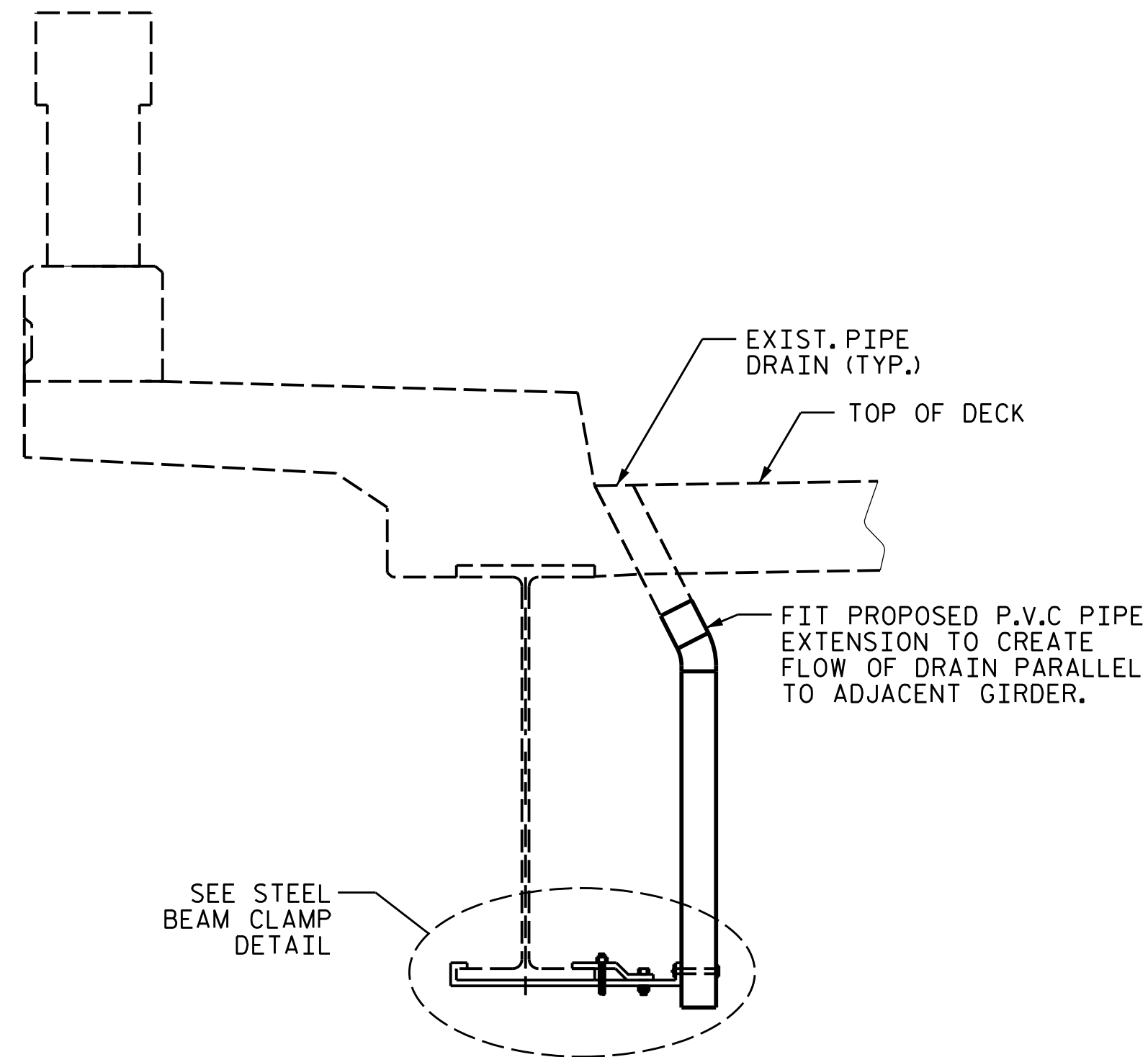
NOTES:

COUPLING IN DRAIN PIPE WILL BE PERMITTED AS APPROVED BY THE ENGINEER.

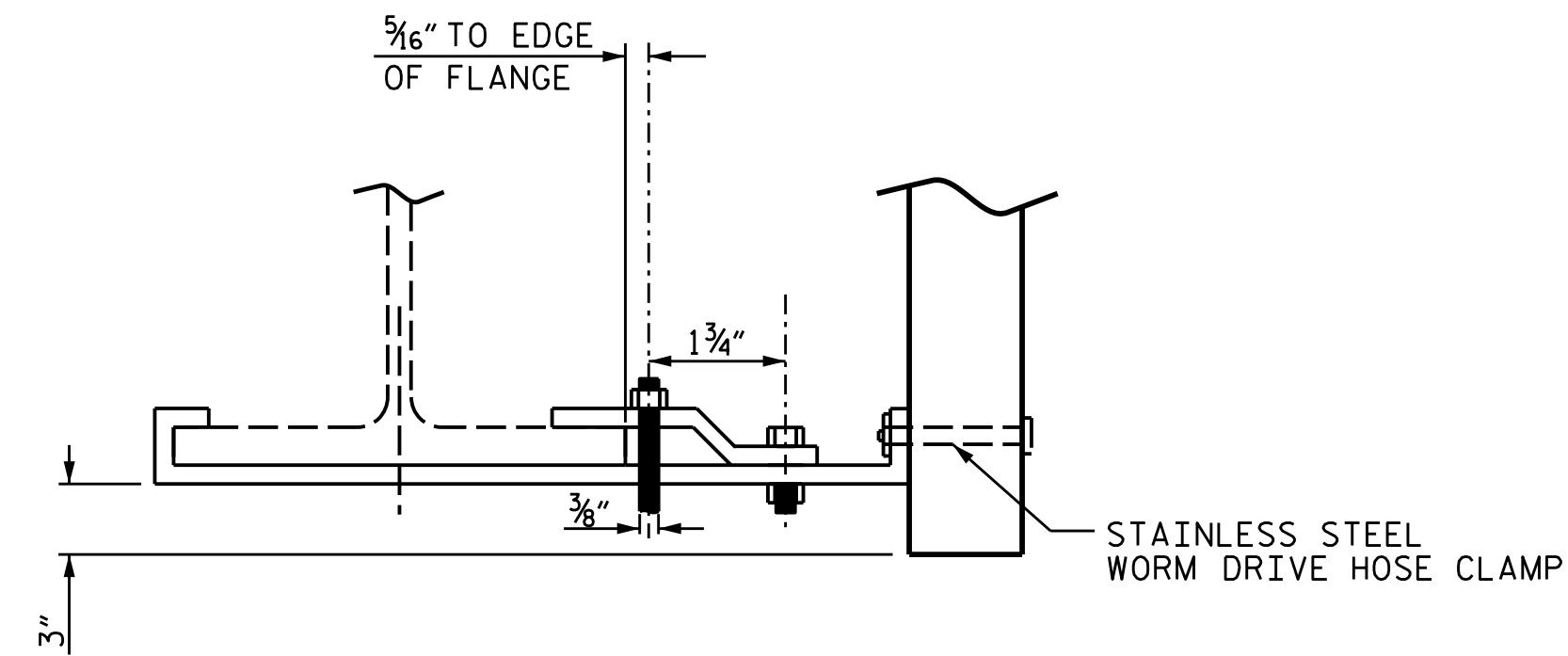
BOLT SIZE TO BE SAME AS DIAPHRAGM AND CROSSFRAME CONNECTIONS. STAINLESS STEEL WORM HOSE CLAMP SHALL BE COMMERCIAL QUALITY.

PIPE AND ALL PLATES SHALL CONFORM TO AASHTO M270 GRADE 36 STEEL OR APPROVED EQUAL. PIPE SHALL CONFORM TO ASTM A53, TYPE S. ALL HOLD DOWN-BOLTS AND NUTS SHALL BE AASHTO M164. WASHERS SHALL CONFORM TO AASHTO M293. ALL ANCHOR STUDS SHALL CONFORM TO AASHTO M163 GRADES 1010 THRU 1020 OR APPROVED EQUAL.

UPON COMPLETION OF SHOP FABRICATION, ALL STEEL PARTS, INCLUDING BOLTS AND WASHERS, SHALL BE HOT-DIP GALVANIZED IN ACCORDANCE WITH THE STANDARD SPECIFICATIONS.



DECK DRAIN EXTENSION DETAIL



STEEL BEAM CLAMP DETAIL

QUANTITY OF DECK DRAIN EXTENSIONS (EA.)		
LOCATION	ESTIMATE	ACTUAL
SPAN A	0	
SPAN B	16	
SPAN C	16	
SPAN D	16	
SPAN E	16	
SPAN F	16	
TOTAL	80	

PROJECT NO. 15BPR.47
EDGEcombe COUNTY
 BRIDGE NO. 320051



STATE OF NORTH CAROLINA
 DEPARTMENT OF TRANSPORTATION
 RALEIGH

**DECK DRAIN
 EXTENSION DETAILS**

DRAWN BY : A. Y. GODFREY DATE : 01/2022
 CHECKED BY : G. AYES DATE : 02/2022

DOCUMENT NOT CONSIDERED
 FINAL UNLESS ALL
 SIGNATURES COMPLETED

REVISIONS						SHEET NO.
NO.	BY:	DATE:	NO.	BY:	DATE:	S1-30
1			3			TOTAL SHEETS
2			4			31