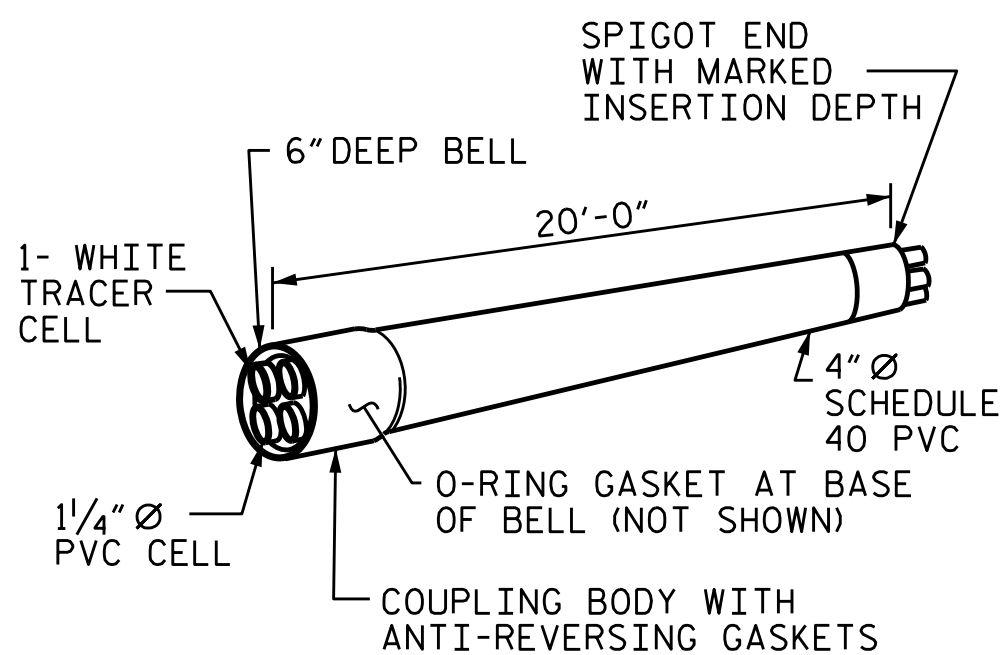
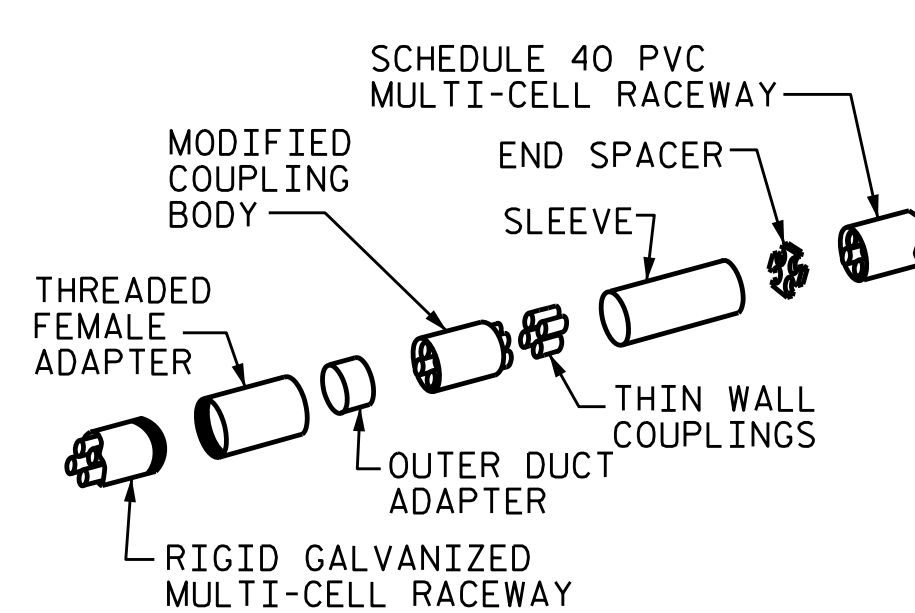


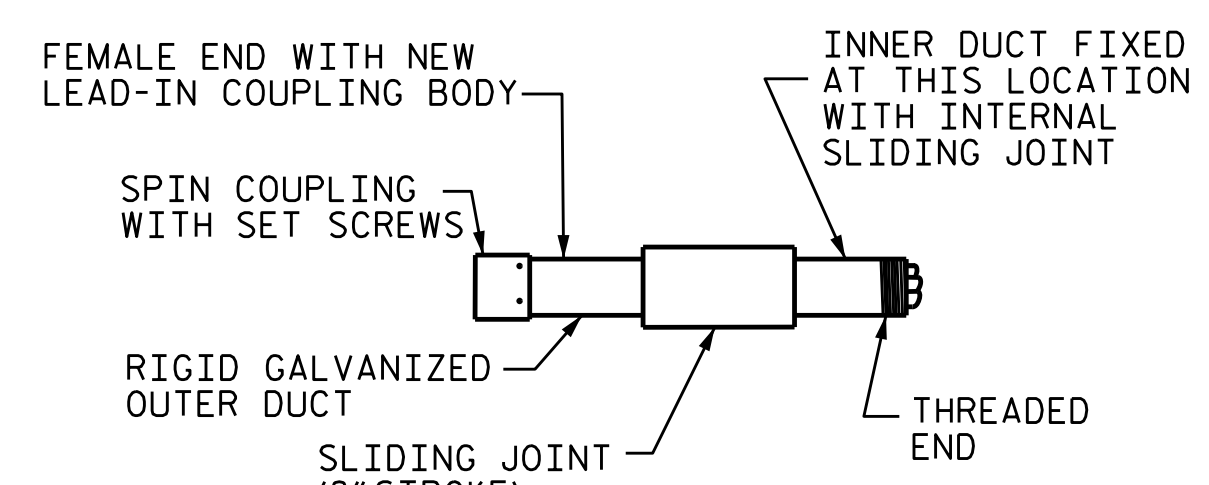
RIGID GALVANIZED (RGC) MULTI-CELL RACEWAY



SCHEDULE 40 PVC MULTI-CELL RACEWAY



TRANSITION ADAPTER



EXPANSION JOINT FITTING

NOTES

THE CONTRACTOR SHALL BE RESPONSIBLE FOR DETERMINING THE TOTAL QUANTITY OF CONDUIT NEEDED TO COMPLETE THE WORK AND THAT THE CONDUIT(S) ARE PLACED AT THE NOTED DIMENSION AND ABOVE THE BOTTOM OF THE GIRDER.

THE INSTALLATION OF THE CONDUIT SYSTEM SHALL BE PAID FOR AS LUMP SUM. THE PRICE SHALL INCLUDE ALL CONDUIT, HANGERS, STABILIZERS, EXPANSION JOINTS, CONCRETE INSERTS, PVC SLEEVES AND ALL NECESSARY HARDWARE TO COMPLETE THE WORK.

THE CONTRACTOR SHALL FIELD VERIFY THAT THE CONDUIT SYSTEM IS NOT IN CONFLICT WITH THE GUARDRAIL POSTS.

SEE DETAIL "C" FOR HANGER ASSEMBLY INSTALLATION.

INSTALL SLEEVES PARALLEL TO GIRDERS. SEE DETAIL "B" FOR SLEEVE INSTALLATION.

PROVIDE TRANSITION ADAPTOR (AND EXPANSION JOINT) FOR CONDUIT AT END BENT 1 (AND END BENT 2).

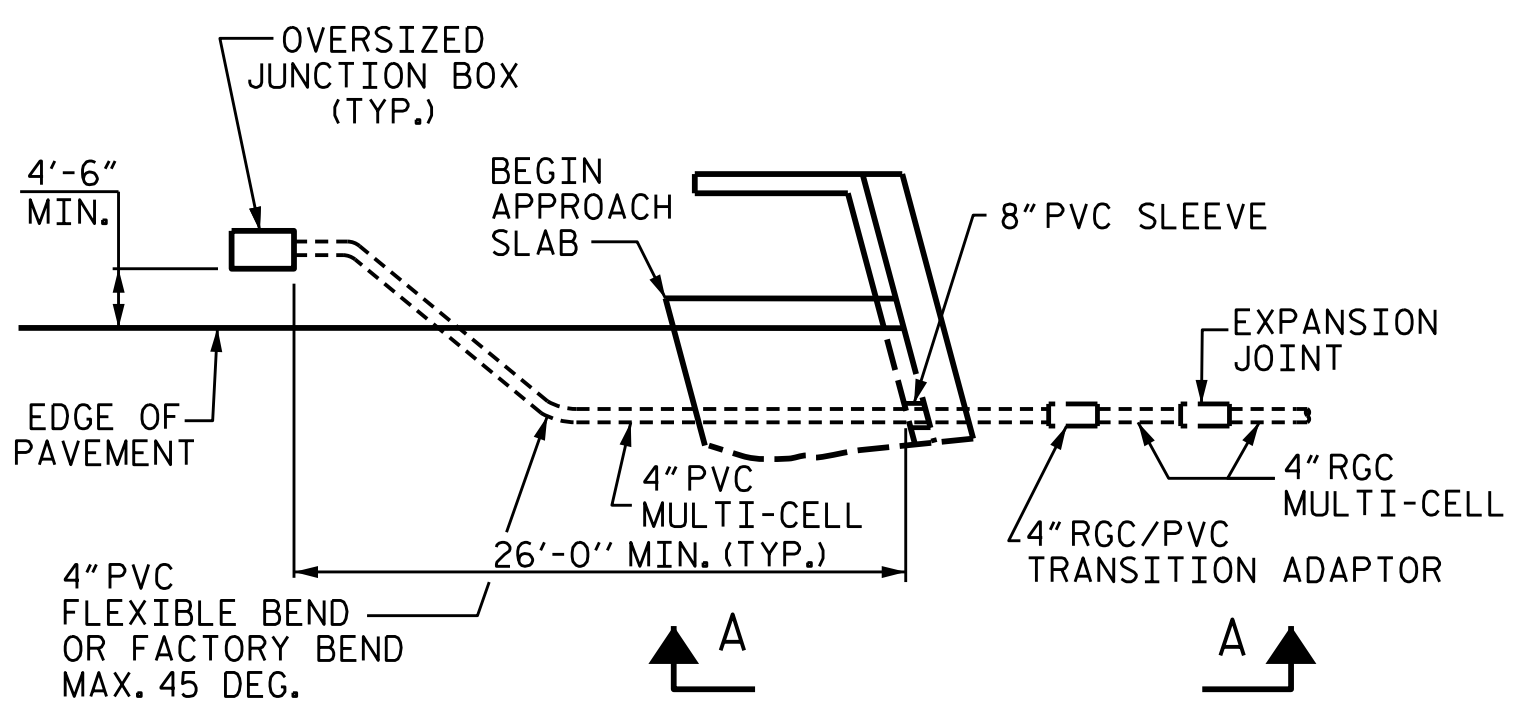
INSTALL STABILIZER'S MIDWAY BETWEEN DECK EXPANSION JOINTS. STABILIZER CAN NOT BE USED INSTEAD OF A HANGER ASSEMBLY.

INSTALL EXPANSION JOINTS AT END BENT 1 & END BENT 2.

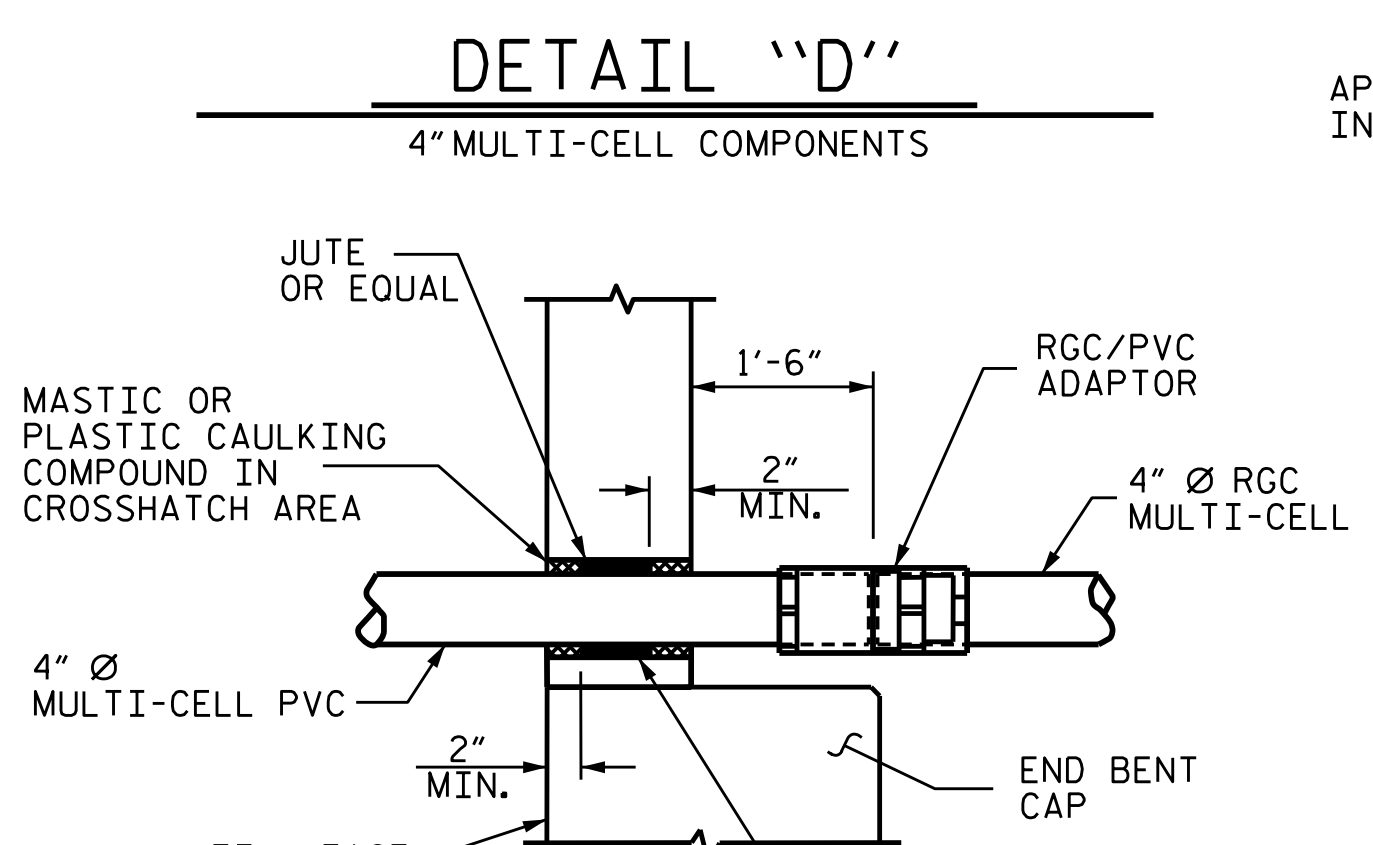
THE CONCRETE SCREW INSERT SHALL HAVE A ROD SIZE OF 5/8" AND A PULL FORCE OF 1260 lbs.

FOR ELECTRICAL CONDUIT SYSTEM FOR SIGNALS, SEE SPECIAL PROVISIONS.

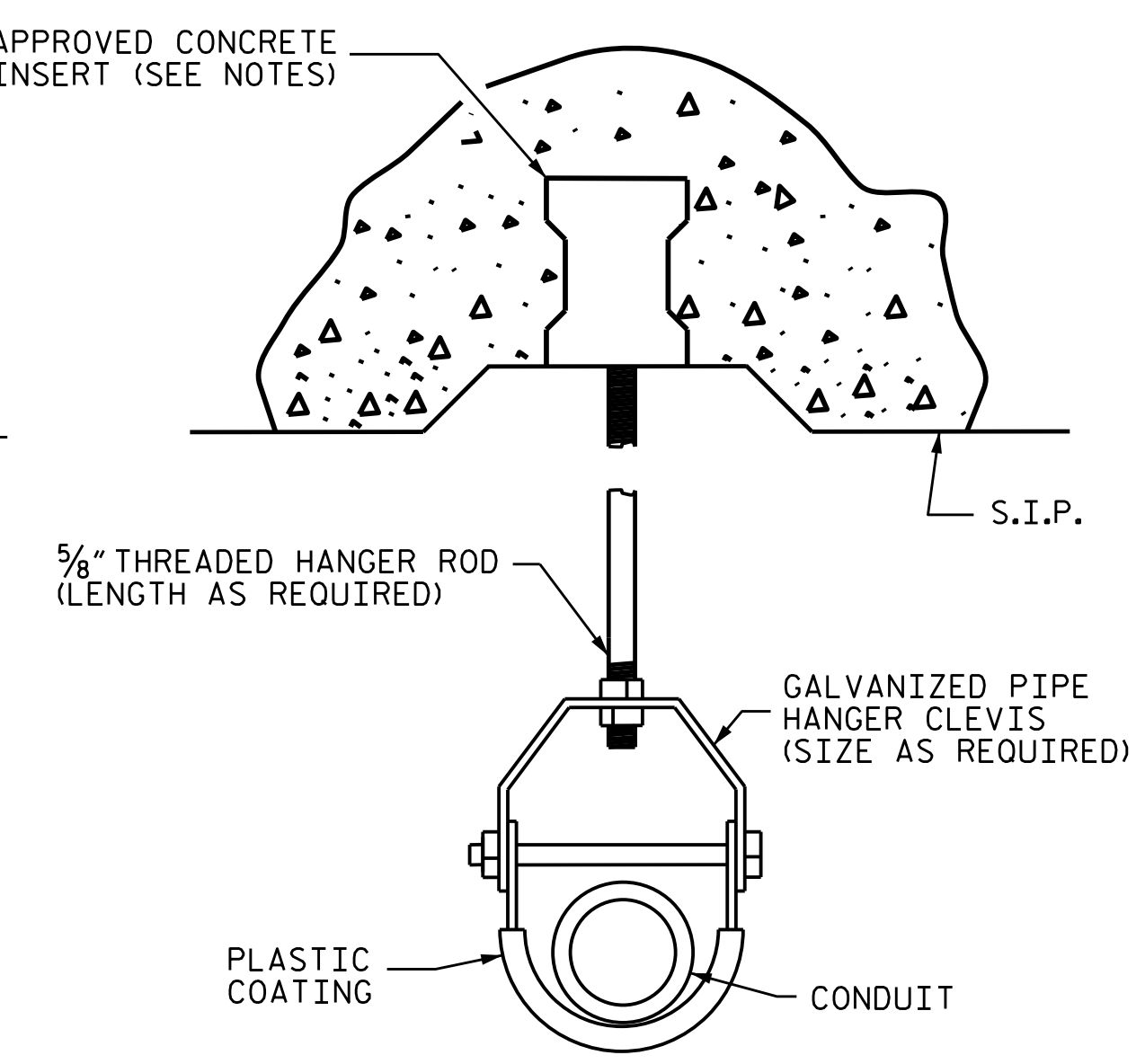
FOR JUNCTION BOX (SPECIAL OVERSIZED) AND ELECTRONIC MARKER BALL, SEE SPECIAL PROVISIONS.



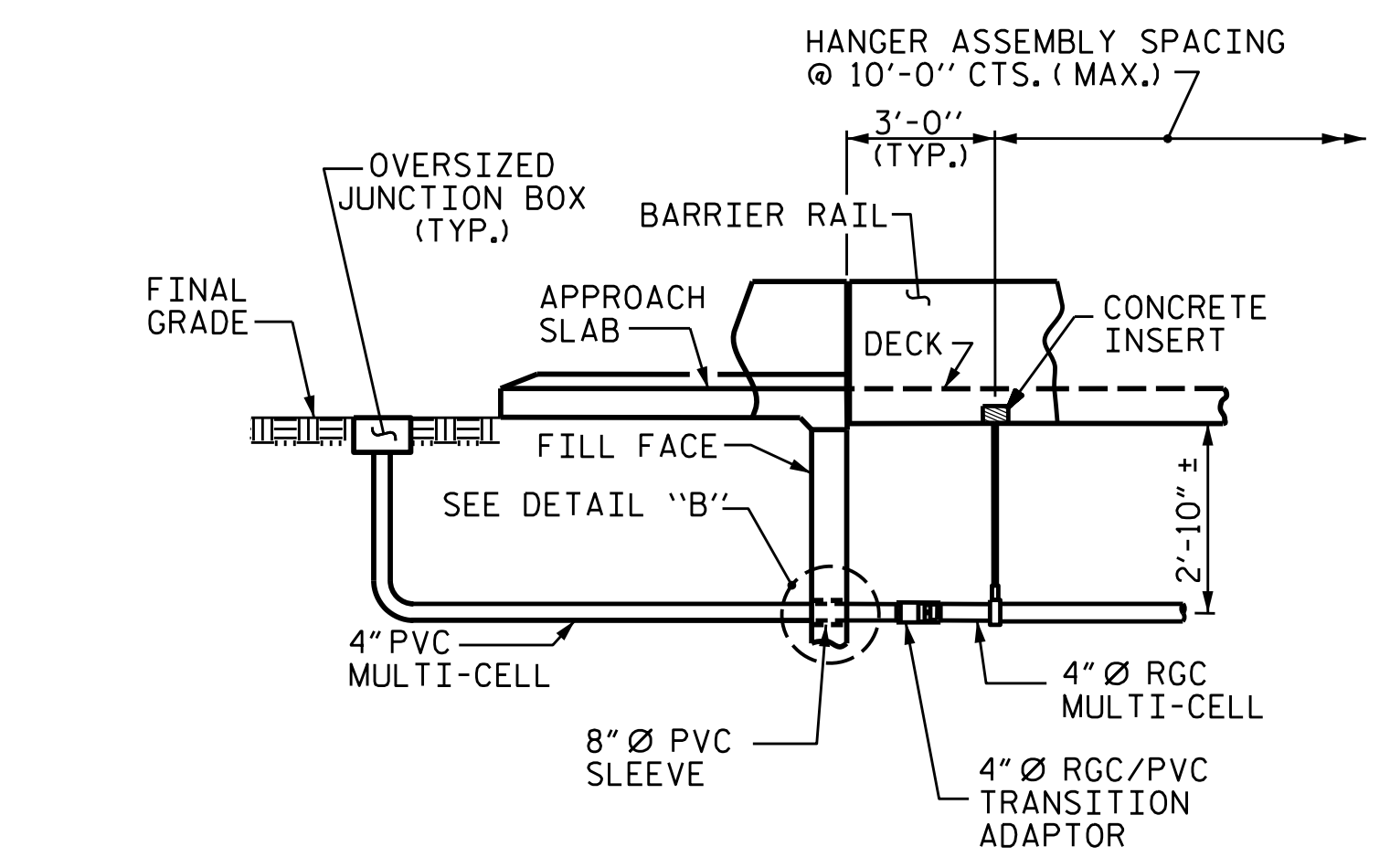
DETAIL "A"
TERMINATION OF CONDUIT AT WING WALL TO OVERSIZED JUNCTION BOX.



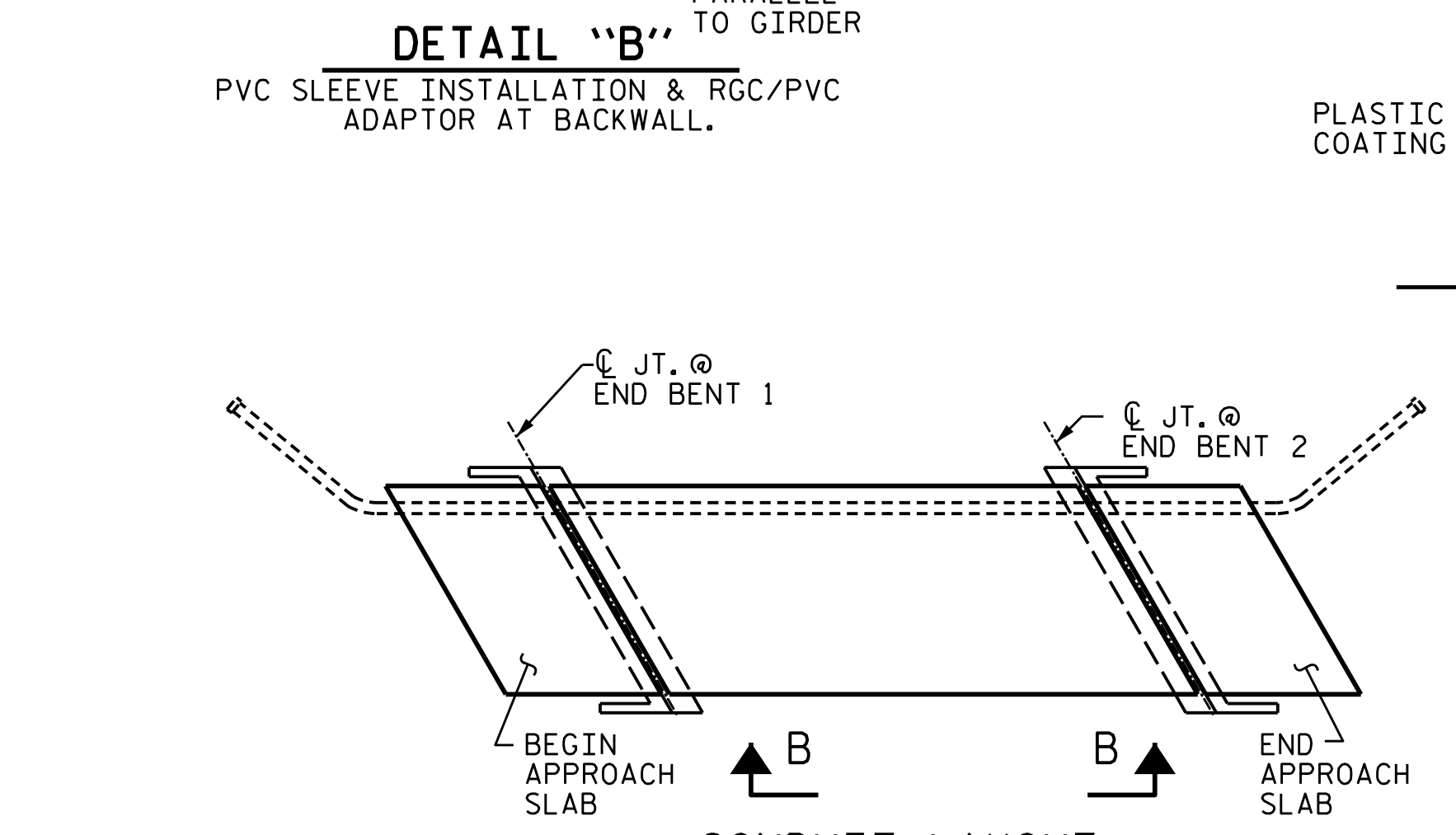
DETAIL "D"
4" MULTI-CELL COMPONENTS



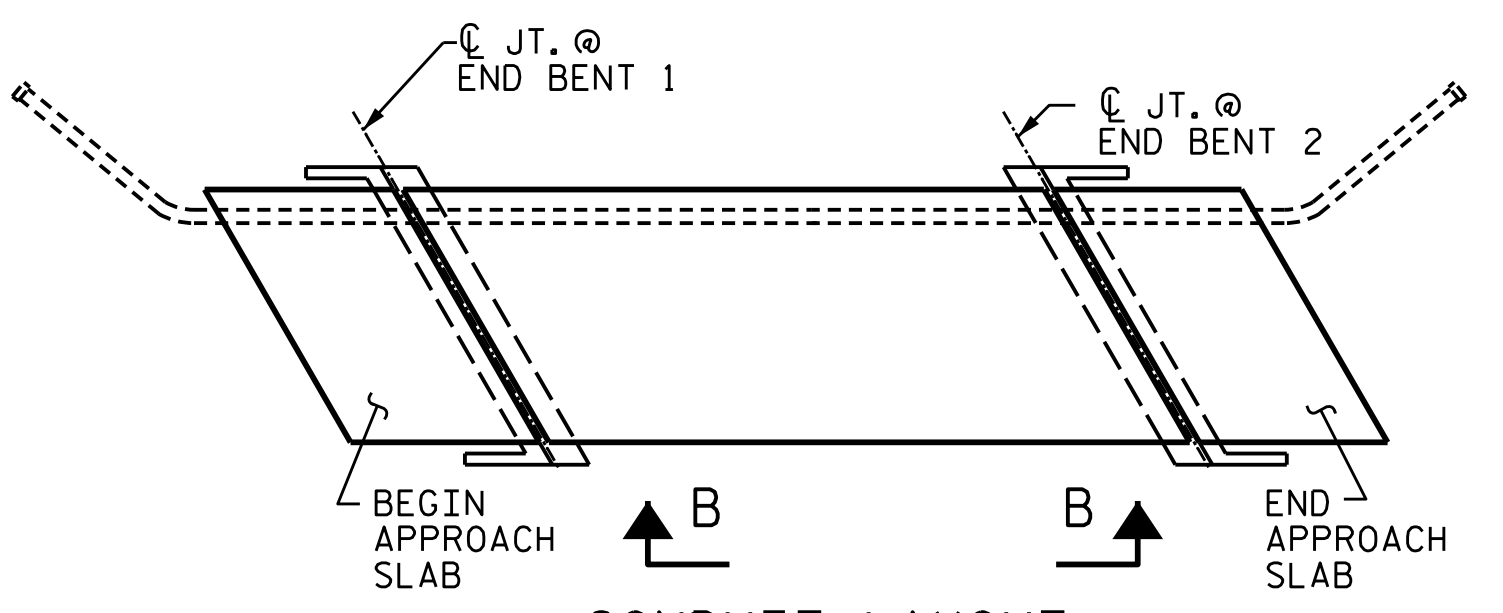
DETAIL "C"
HANGER ASSEMBLY



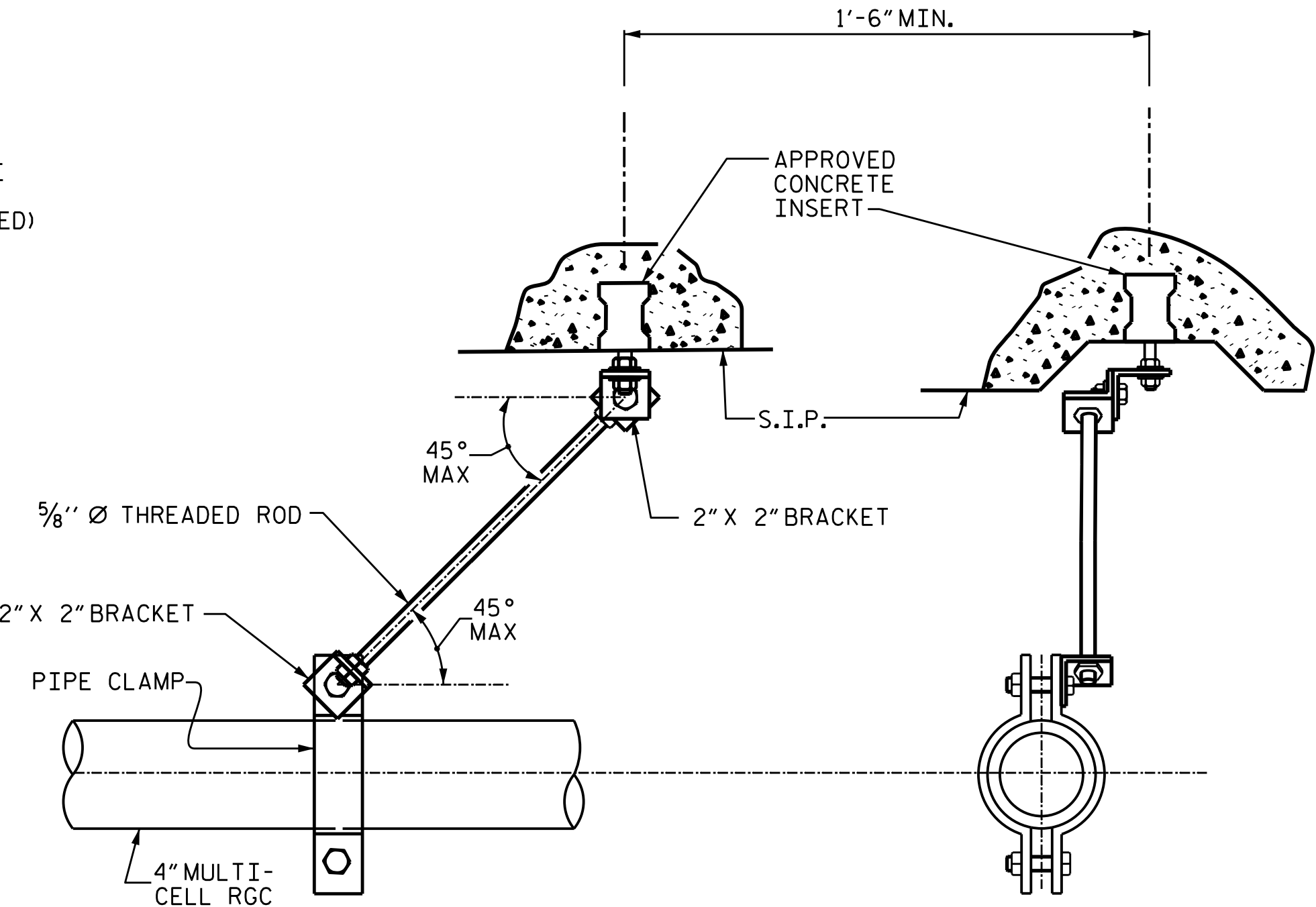
VIEW A-A



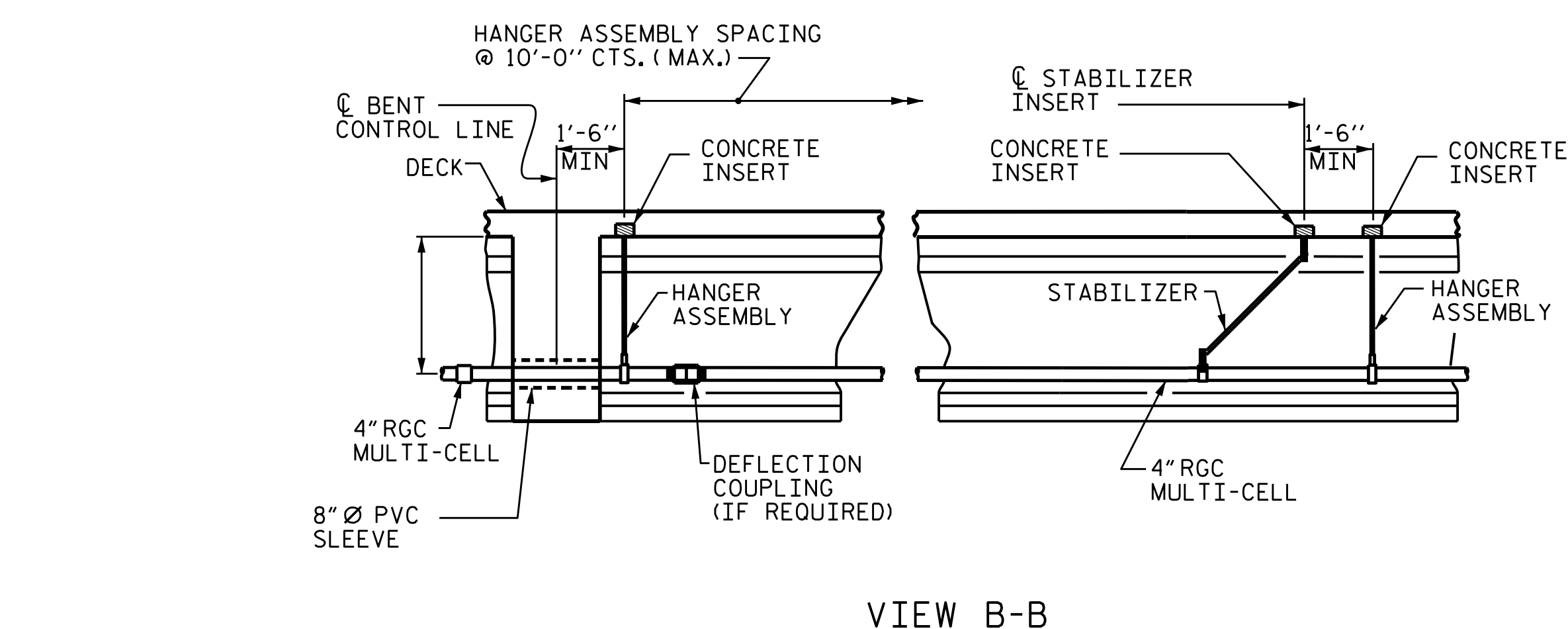
DETAIL "B"
PVC SLEEVE INSTALLATION & RGC/PVC ADAPTOR AT BACKWALL.



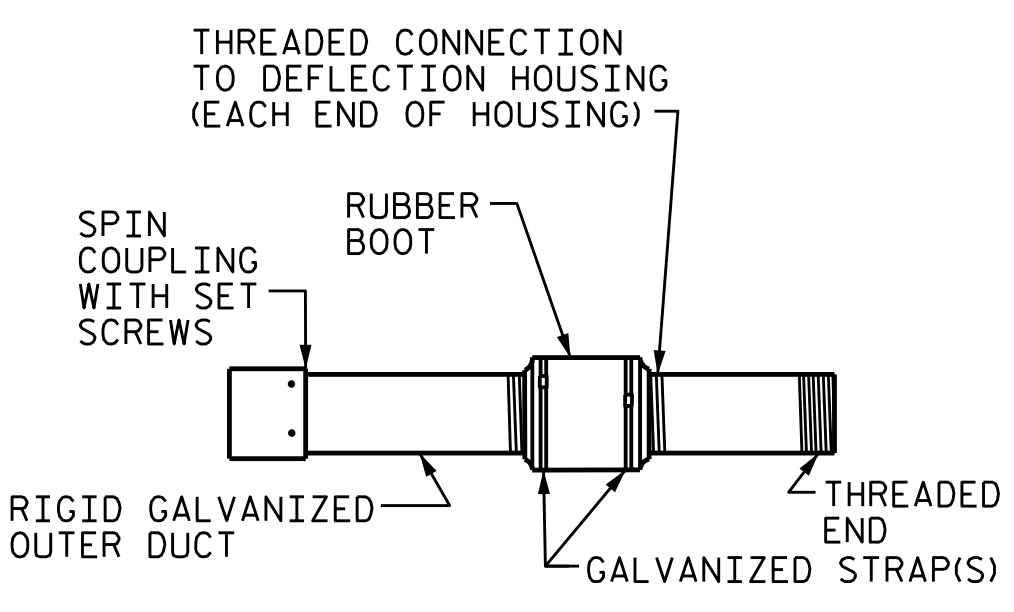
CONDUIT LAYOUT



DETAIL "E"
STABILIZER



VIEW B-B
PRESTRESSED GIRDERS CONTINUOUS FOR LIVE LOAD



DETAIL "F"
DEFLECTION COUPLING

PROJECT NO. B-4786
PITT COUNTY
 STATION: 28+03.00 -L-

ASSEMBLED BY : S. B. WILLIAMS	DATE : 7-21
CHECKED BY : MGC	DATE : 8-21
DRAWN BY : RWW	2-4-03
CHECKED BY : DBM	2-4-03
REV. 5/1/06	TLA/GM
REV. 10/1/11	MAA/GM
REV. 12/17	MAA/THC

STATE OF NORTH CAROLINA
 DEPARTMENT OF TRANSPORTATION
 RALEIGH
 STANDARD
 ELECTRICAL CONDUIT SYSTEM FOR SIGNALS

9/26/2021
 X:\NCDD\18-4786\Structures\Final plans\00N\B-4786.SMU. UT. 730038.dgn
 User:rsbwilliams

2/24/2022 | 7:41 AM EST

DOCUMENT NOT CONSIDERED FINAL UNLESS ALL SIGNATURES COMPLETED

TGS ENGINEERS
 706 HILLSBOROUGH STREET
 SUITE 200
 RALEIGH, NC 27603
 PH (919) 773-8887
 CORP. LICENSE NO.: C-0275

REVISIONS						SHEET NO.
NO.	BY:	DATE:	NO.	BY:	DATE:	S-54
1			3			TOTAL SHEETS
2			4			57