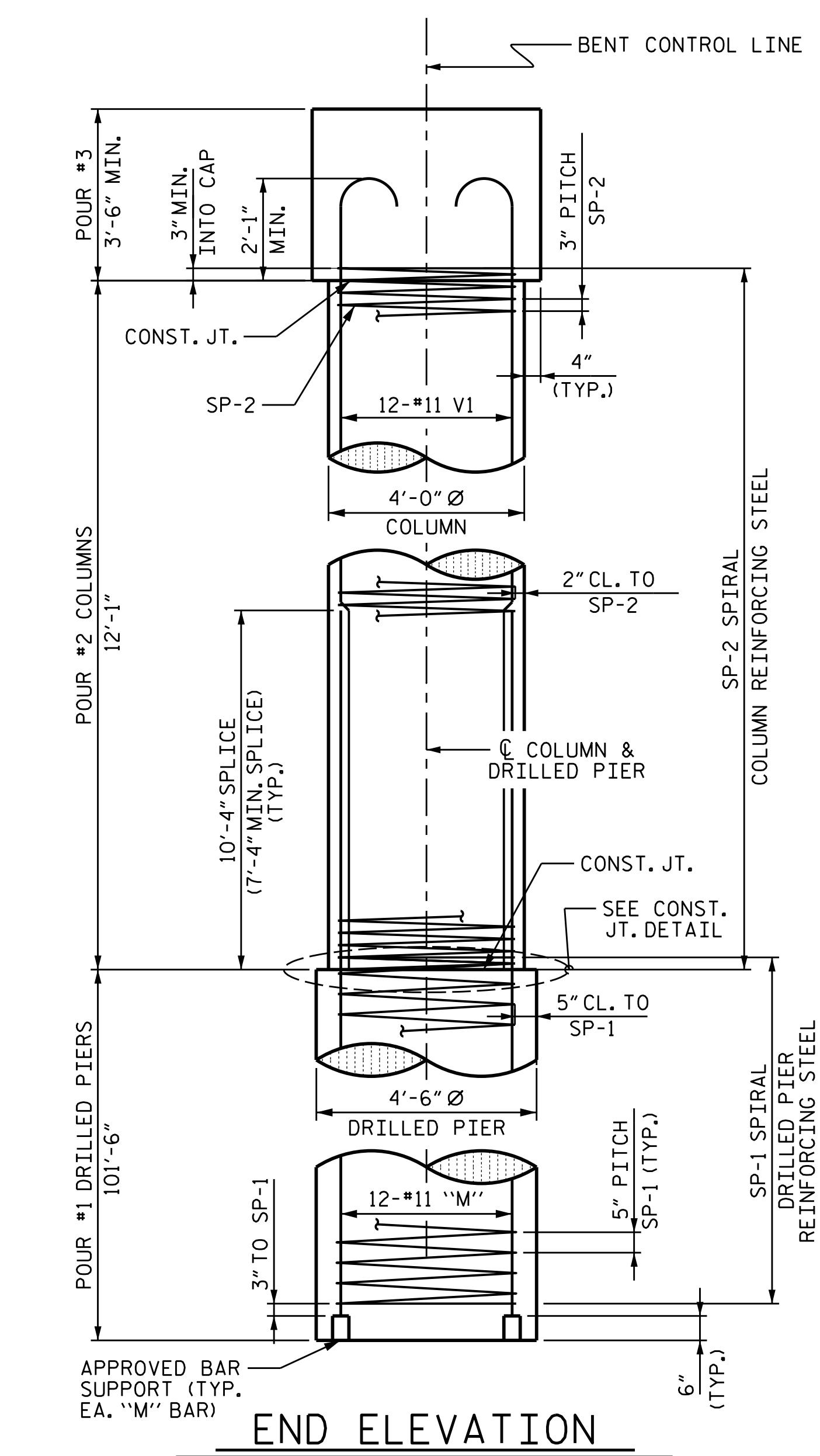
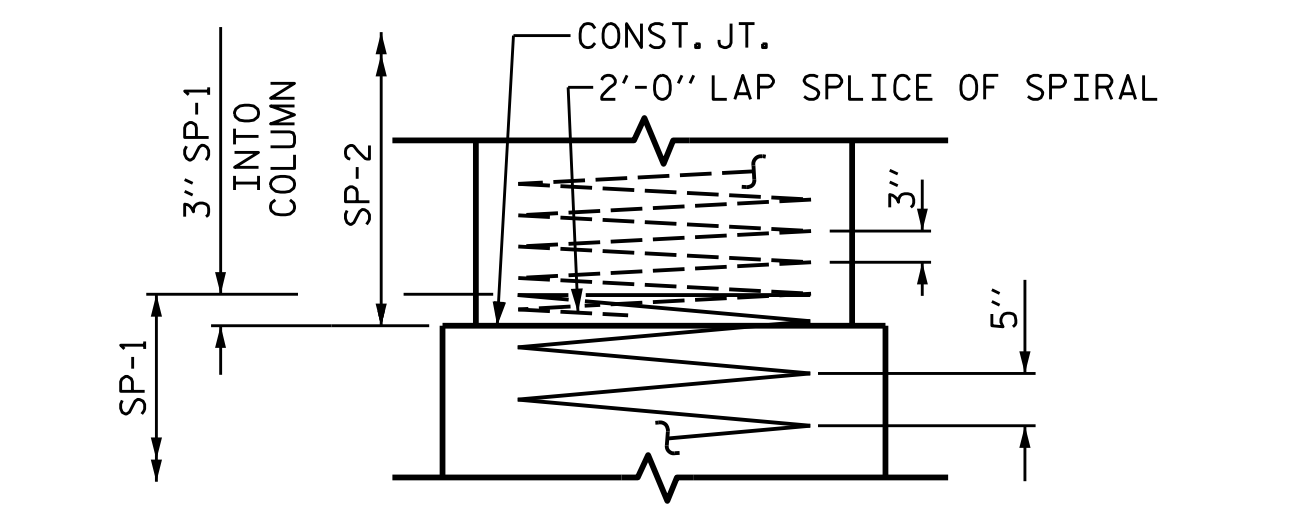


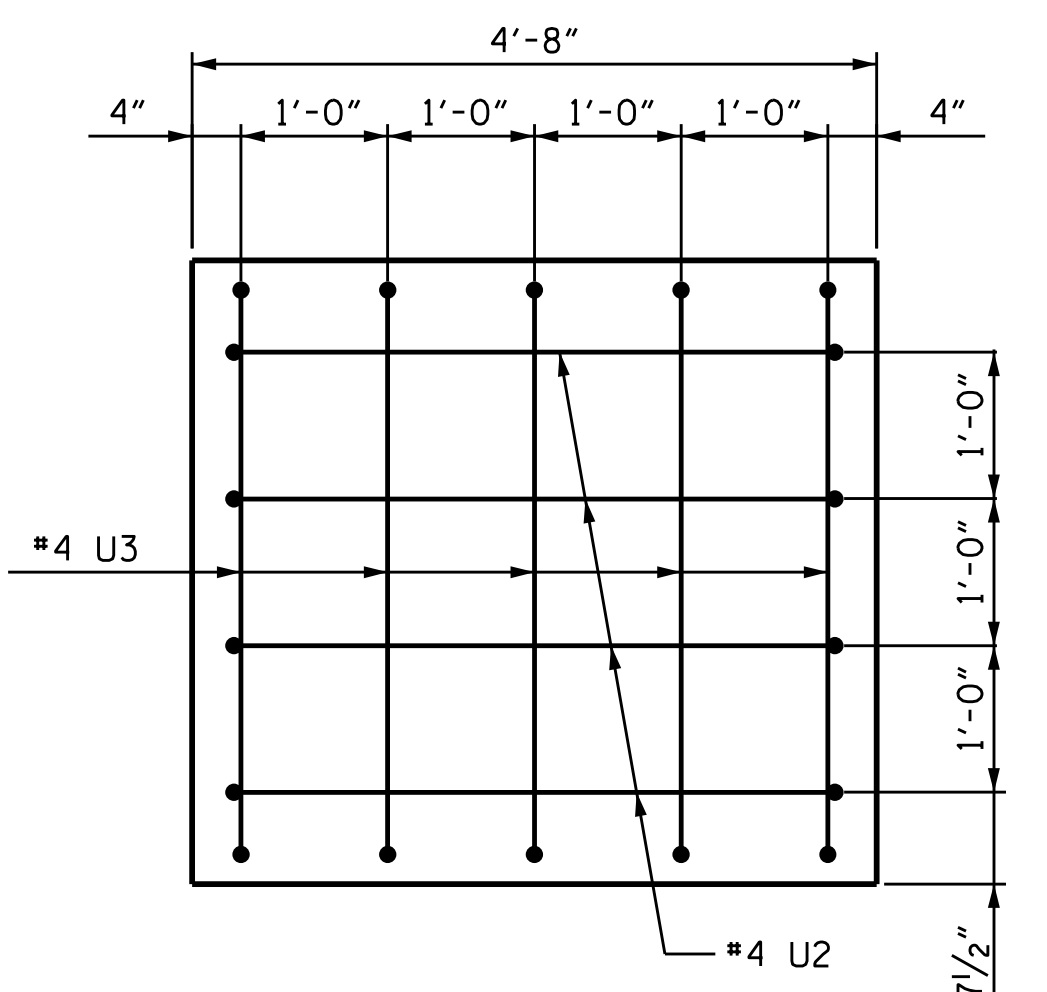
PLAN OF DRILLED PIERS & COLUMNS



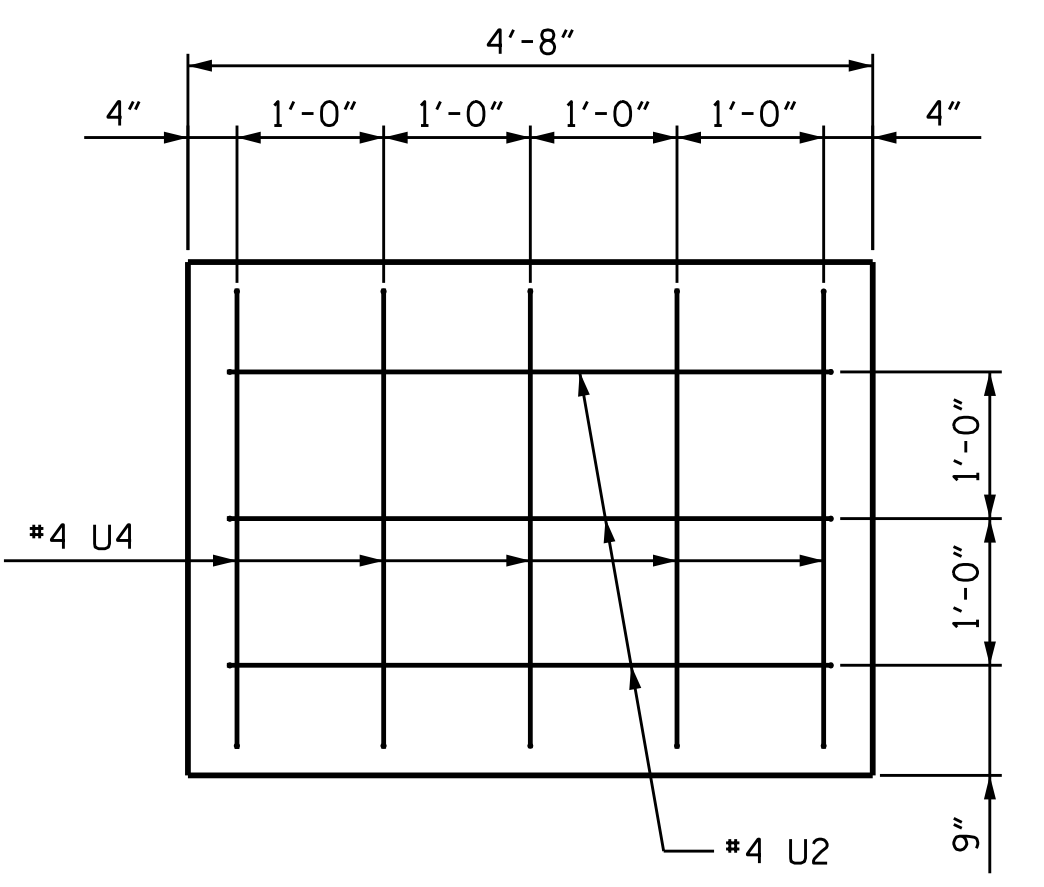
END ELEVATION



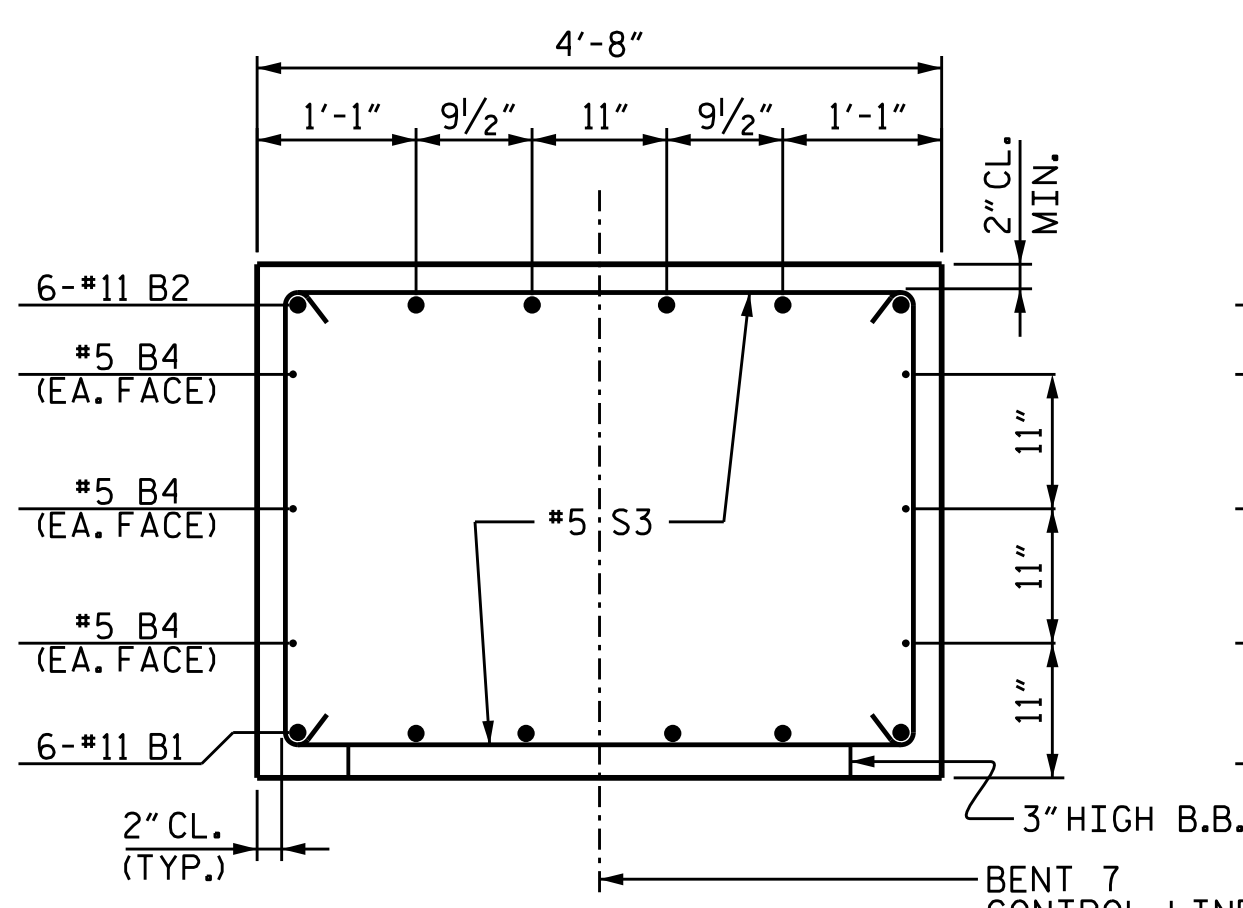
CONSTRUCTION JOINT DETAIL



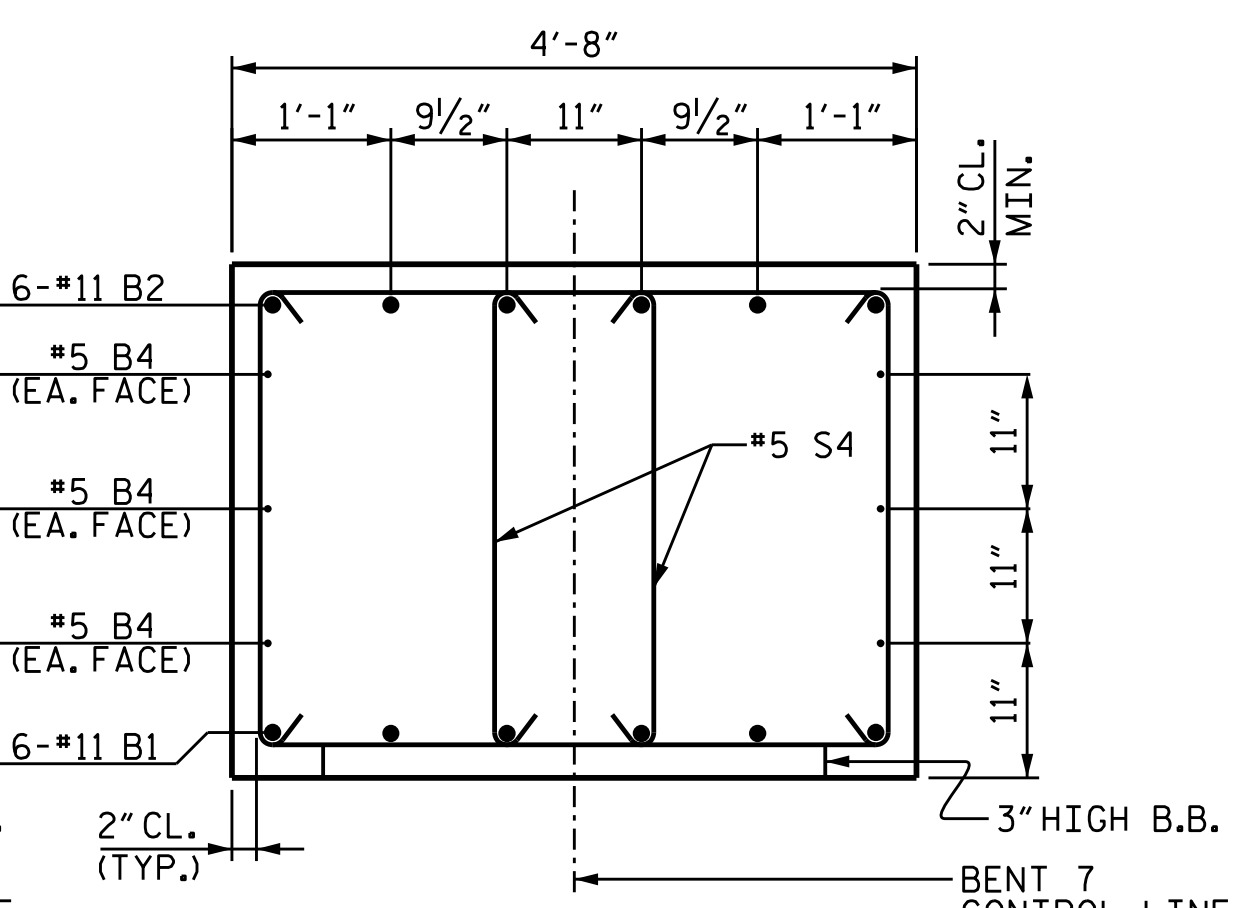
LEFT END VIEW



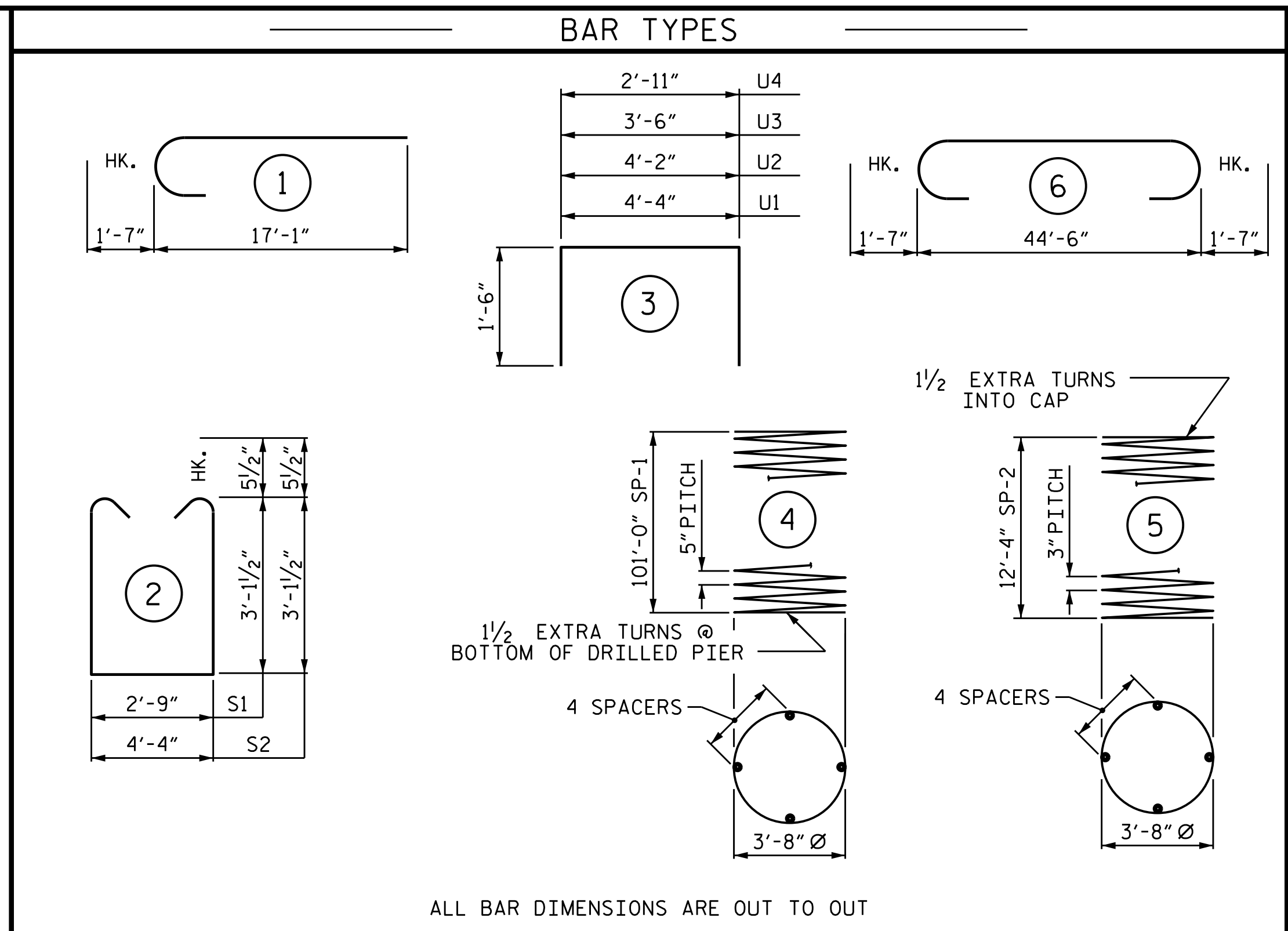
RIGHT END VIEW



SECTION B-B



SECTION A-A



ALL BAR DIMENSIONS ARE OUT TO OUT

| BILL OF MATERIAL FOR BENT 7                                                                           |     |      |      |           |             |
|-------------------------------------------------------------------------------------------------------|-----|------|------|-----------|-------------|
| BAR                                                                                                   | NO. | SIZE | TYPE | LENGTH    | WEIGHT      |
| B1                                                                                                    | 6   | #11  | STR  | 44'-8"    | 1,424       |
| B2                                                                                                    | 6   | #11  | 6    | 47'-8"    | 1,520       |
| B3                                                                                                    | 6   | #5   | STR  | 44'-8"    | 280         |
| B4                                                                                                    | 6   | #4   | STR  | 24'-5"    | 98          |
| M1                                                                                                    | 36  | #11  | STR  | 60'-0"    | 11,476      |
| M2                                                                                                    | 36  | #11  | STR  | 58'-8"    | 11,221      |
| S1                                                                                                    | 16  | #5   | 2    | 9'-11"    | 165         |
| S2                                                                                                    | 38  | #5   | 2    | 11'-6"    | 456         |
| U1                                                                                                    | 53  | #4   | 3    | 7'-4"     | 260         |
| U2                                                                                                    | 7   | #4   | 3    | 7'-2"     | 34          |
| U3                                                                                                    | 5   | #4   | 3    | 6'-6"     | 22          |
| U4                                                                                                    | 5   | #4   | 3    | 5'-11"    | 20          |
| V1                                                                                                    | 36  | #11  | 1    | 15'-9"    | 3,012       |
| REINFORCING STEEL                                                                                     |     |      |      |           | 29,988 LBS. |
| SP-1                                                                                                  | 3   | *    | 4    | 2,772'-8" | 8,676       |
| SP-2                                                                                                  | 3   | **   | 5    | 581'-0"   | 1,164       |
| SPIRAL COLUMN REINFORCING STEEL                                                                       |     |      |      |           | 9,840 LBS.  |
| * THE SP-1 SPIRAL REINFORCING STEEL SHALL BE W31 OR D-31 COLD DRAWN WIRE OR #5 PLAIN OR DEFORMED BAR  |     |      |      |           |             |
| ** THE SP-2 SPIRAL REINFORCING STEEL SHALL BE W20 OR D-20 COLD DRAWN WIRE OR #4 PLAIN OR DEFORMED BAR |     |      |      |           |             |

| CLASS A CONCRETE BREAKDOWN    |                  |
|-------------------------------|------------------|
| POUR #2 (COLUMNS)             | 16.9 C.Y.        |
| POUR #3 (CAP)                 | 29.8 C.Y.        |
| <b>TOTAL CLASS A CONCRETE</b> | <b>46.7 C.Y.</b> |
| DRILLED PIERS:                |                  |
| DRILLED PIER CONCRETE POUR #1 | 179.4 C.Y.       |
| 4'-6" Ø DRILLED PIERS IN SOIL | 304.50 LIN. FT.  |
| CSL TUBES                     | 1236.00 LIN. FT. |

PROJECT NO. B-4786  
 COUNTY PITT  
 STATION: 28+03.00 -L-  
 SHEET 2 OF 2

STATE OF NORTH CAROLINA  
 DEPARTMENT OF TRANSPORTATION  
 RALEIGH

PROFESSIONAL ENGINEER  
 SEAL 20125  
 MICHAEL G. CHEN, P.E.  
 2/24/2022 | 7:41 AM EST

DOCUMENT NOT CONSIDERED FINAL UNLESS ALL SIGNATURES COMPLETED

TGS ENGINEERS  
 706 HILLSBOROUGH STREET  
 SUITE 200  
 RALEIGH, NC 27603  
 PH (919) 773-8887  
 CORP. LICENSE NO.: C-0275

| REVISIONS |     |       |     |     |       | SHEET NO.    |
|-----------|-----|-------|-----|-----|-------|--------------|
| NO.       | BY: | DATE: | NO. | BY: | DATE: | S-50         |
| 1         |     |       | 3   |     |       | TOTAL SHEETS |
| 2         |     |       | 4   |     |       | 57           |

DRAWN BY: TBE / ZCS DATE: 6/2019  
 CHECKED BY: MGC DATE: 6/2019  
 DESIGN ENGINEER OF RECORD: TBE DATE: 6/2019