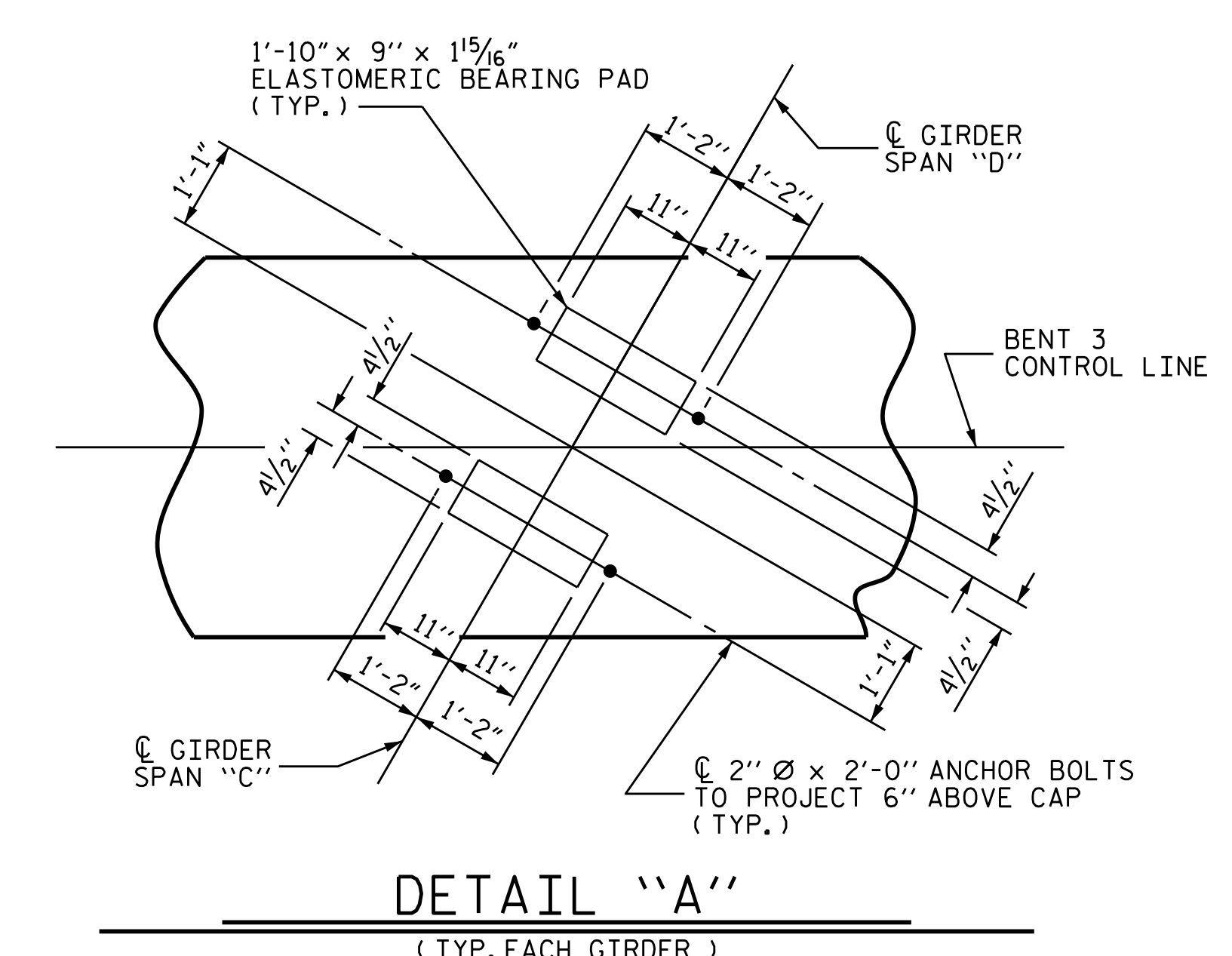
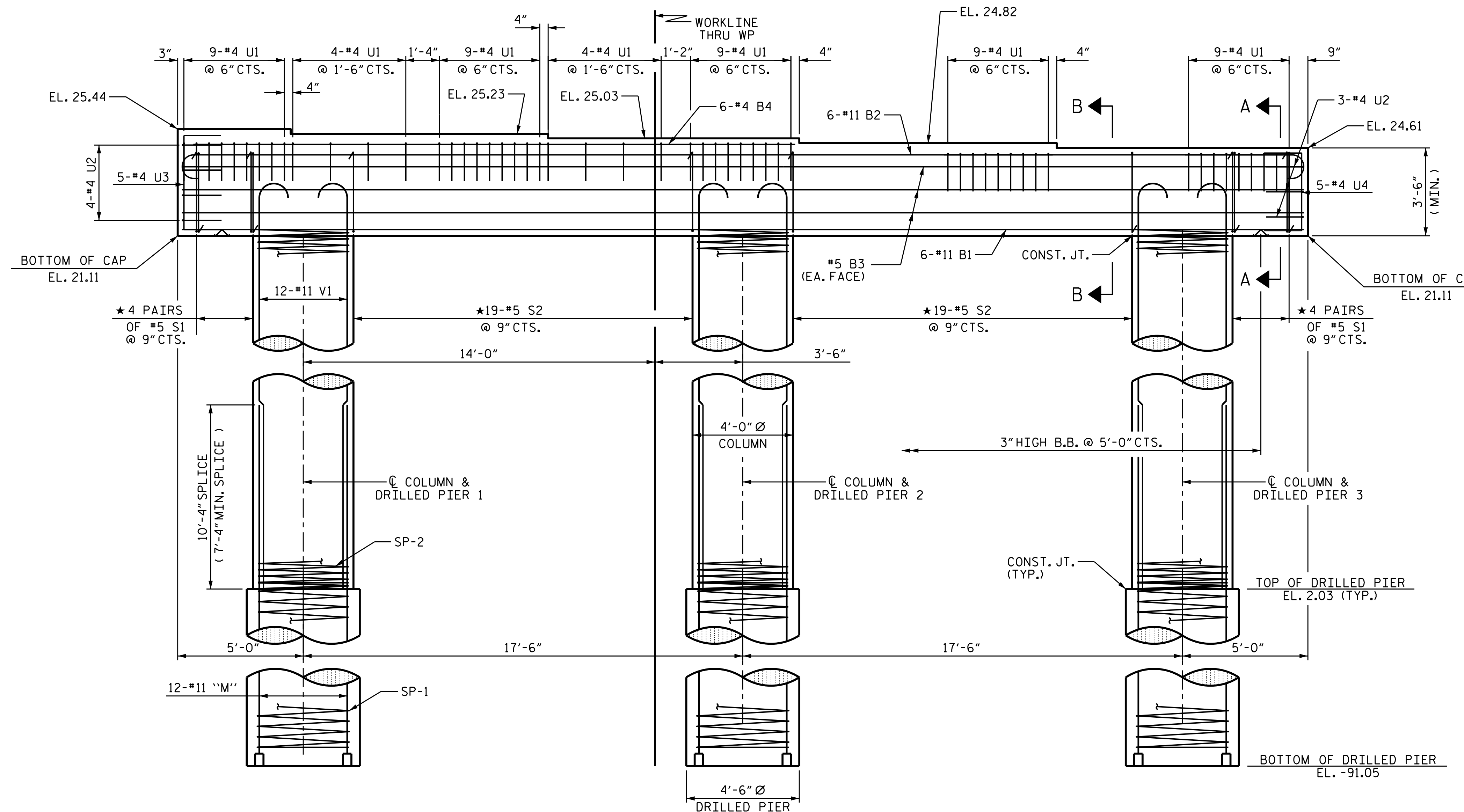
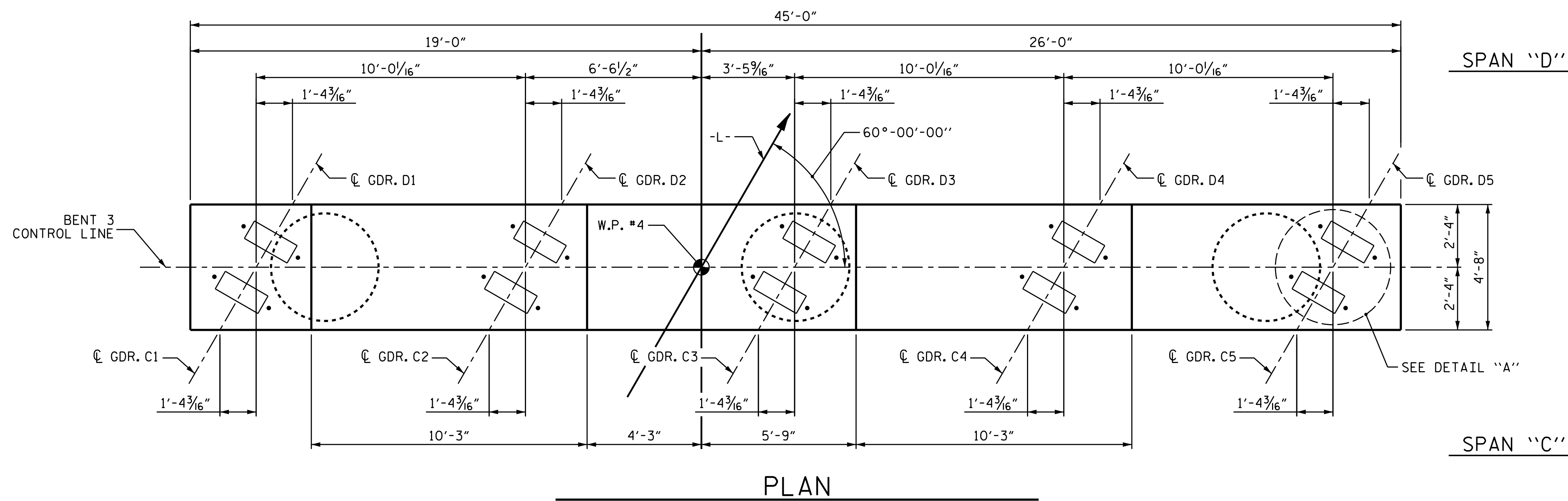


NOTES

- STIRRUPS IN CAP MAY BE SHIFTED AS NECESSARY TO CLEAR ANCHOR BOLTS.
- HOOKS ON "V" BARS MAY BE TURNED AS NECESSARY FOR PLACING REINFORCING STEEL.
- FOR DRILLED PIERS, SEE SECTION 411 OF THE STANDARD SPECIFICATIONS.
- ALL STEEL IN THE DRILLED PIERS IS INCLUDED IN THE PAY ITEMS FOR "REINFORCING STEEL" AND "SPIRAL COLUMN REINFORCING STEEL."
- * INVERT ALTERNATE STIRRUPS.
- DRILLED PIERS SHALL BE TERMINATED ONE FOOT ± ABOVE WATER SURFACE FOR SHAFTS LOCATED IN WATER.
- THE CONTRACTOR'S ATTENTION IS CALLED TO THE FACT THAT THE LONGITUDINAL REINFORCEMENT FOR DRILLED PIERS IS DETAILED WITH 3 FEET OF EXTRA LENGTH.



ELEVATION

DIMENSIONS AND REINFORCING STEEL ARE TYPICAL FOR EACH COLUMN & DRILLED PIER EXCEPT AS NOTED.

PROJECT NO. B-4786
 COUNTY PITT
 STATION: 28+03.00 -L-
 SHEET 1 OF 2

STATE OF NORTH CAROLINA
 DEPARTMENT OF TRANSPORTATION
 RALEIGH

**SUBSTRUCTURE
 BENT 3**

2/24/2022 | 7:41 AM EST

DOCUMENT NOT CONSIDERED FINAL
 UNLESS ALL SIGNATURES COMPLETED

TGS ENGINEERS
 706 HILLSBOROUGH STREET
 SUITE 200
 RALEIGH, NC 27603
 PH (919) 773-8887
 CORP. LICENSE NO.: C-0275

REVISIONS						SHEET NO. S-41
NO.	BY:	DATE:	NO.	BY:	DATE:	
1			3			TOTAL SHEETS 57
2			4			

DRAWN BY : TBE / ZCS DATE : 6/2019
 CHECKED BY : MGC DATE : 6/2019
 DESIGN ENGINEER OF RECORD: TBE DATE : 6/2019

9/24/2021
 X:\NCDOT\B-4786\Structures\Final plans\DCNs\B-4786.SMU. B31.730038.dgn
 Users\sbwilliams